



**LE SUEUR COUNTY BOARD OF COMMISSIONERS
MEETING AGENDA
COMMISSION CHAMBERS
September 15, 2015**

1. **9:00 am Agenda and Consent Agenda**
RE: September 1, 2015 Minutes and Summary Minutes
RE: CD #36 Repair Request
RE: CD #68 Repair Request
2. **9:05 am Claims (10 min)**
3. **9:15 am Human Services (1 hour)**
4. **10:00 am Set 2016 Preliminary Levy (10 min)**
5. **10:10 am Jim McMillen, Maintenance (10 min)**
RE: Security Cameras
RE: Smart TV at Information Desk
6. **10:20 am Justin Lutterman, GIS (20 min)**
RE: Implementation and Training of new GIS software
RE: Pictometry Contract (Aerial Imagery)
7. **10:40 am Mike Schultz (10 min)**
RE: Gravel Tax Project

8. **10:50 am John Bruender (10 min)**
RE: German-Jefferson Ordinance
9. **11:00 am Human Resources (10 min)**
10. **11:10 am Kathy Brockway, PZ Administrator (5 minutes)**
Request for Action 3- CUP's, Seely, Helmstetter and Solheid
11. **11:15 am Darrell Pettis, Administrator**
RE: HSIP Projects
RE: Library Budget
RE: Nicollet County Grand Opening Invite
12. **11:00 am BKV Work Session following Board Meeting**
13. **Future Meetings**



Le Sueur County, MN

Tuesday, September 15, 2015

Board Meeting

Item 1

9:00 am Agenda and Consent Agenda

RE: September 1, 2015 Minutes and Summary Minutes

RE: CD #36 Repair Request

RE: CD #68 Repair Request

Staff Contact:

Minutes of Le Sueur County Board of Commissioners Meeting September 1, 2015

The Le Sueur County Board of Commissioners met in regular session on Tuesday, September 1, 2015 at 9:00 a.m. in the Courthouse at Le Center, Minnesota. Those members present were: Steve Rohlffing, Lance Wetzel, Dave Gliszinski, John King and Joe Connolly. Darrell Pettis and Brent Christian were also present.

On motion by Connolly, seconded by Rohlffing and unanimously approved, the Board approved the agenda for the business of the day.

On motion by Gliszinski, seconded by King and unanimously approved, the Board approved the consent agenda:

- Approved the August 25, 2015 County Board Minutes and Summary Minutes

On motion by King, seconded by Gliszinski and unanimously approved, the following cases and claims were approved:

Soc Serv:	\$ 42,413.48
Financial:	\$ 22,480.82

Jim McMillen, Maintenance appeared before the Board with one item for consideration.

On motion by Rohlffing, seconded by Connolly and unanimously approved, the Board approved to move forward with the Human Services remodel. Jim will get a final architect draft and bids to present to the Board.

Darrell Pettis, Administrator/Engineer appeared before the Board with several items for discussion.

At 10:00 a.m. the Board reconvened the County Ditch #58, Branch #2 Public Hearing.

Chuck Brandel, Engineer with I&S Group presented findings from further scoping of the tile system as instructed at the July 16, 2015 hearing.

John Kolb, Attorney with Rinke Noonan presented background information, and was available to answer questions.

There were no public comments.

On motion by Rohlffing, seconded by Connolly and unanimously approved, the Board approved to close the Public Hearing at 10:40 a.m.

At a hearing on the repair of Branch 2 or Le Sueur County Ditch (LCD) 58, on May 19, 2015, recessed and continued to June 16, 2015, further recessed and continued to September 1, 2015 in the Commissioner's room of the Le Sueur County Courthouse, 88 South Park Avenue, Le Center Minnesota, Commissioner Rohlffing made a motion to adopt the following Findings and Order:

WHEREAS, the Le Sueur County Board of Commissioners, Drainage Authority for LCD 58, upon concerns expressed by owners of property benefited by the drainage system in the vicinity of Branch 2 of LCD 58, directed an inspection of a portion of the drainage system and preparation of a condition report along with recommendations for repair, if necessary to restore the drainage system as nearly as practicable to the same hydraulic capacity as originally constructed and subsequently improved; and

WHEREAS, Branch 2 of LCD 58 consists of buried tile and a shallow swale on the same alignment; and

WHEREAS, the inspection was completed and the consulting engineer reported that Branch 2 of LCD 58 is failing and in need of repair; and

WHEREAS, in his initial report, the consulting engineer presented two options for repair that would restore the hydraulic capacity of the system and protect the system from further deterioration; and

WHEREAS, the Board, after making findings regarding the condition of the drainage system and the need for its repair, directed that the engineer evaluate a third repair option more closely following the original alignment of the drainage system; and

WHEREAS, the engineer filed a revised repair report dated April 13, 2015, detailing three repair options for the drainage system; and

WHEREAS, on June 10, 2015, the engineer submitted a repair report amendment detailing a fourth repair option; and

WHEREAS, at its continued hearing on June 16, 2015, the Board directed that the extent of Branch 2 be televised to determine the extent of deterioration and to further evaluate the feasibility of the various recommended repair options; and

WHEREAS, the engineer issued a second amendment to his repair report after considering the results of the televised investigation of Branch 2. Based on his further review, the engineer reiterated his repair alternative recommendation in the first amendment to repair report; and

WHEREAS, the four alternatives presented are feasible and consistent with the statutory definition of repair found in statutes section 103E.701 which includes restoring “all or a part of a drainage system as nearly as practicable to the same hydraulic capacity as originally constructed” and “realignment to original construction if necessary to restore the effectiveness of the drainage system;” and

WHEREAS, the Board noticed and held a hearing on the engineer’s repair report in order to take public comment regarding the repair alternatives, including the cost and functionality of the repair alternatives; and

WHEREAS, the engineer recommends repair option four, as detailed in the first repair report amendment. The engineer's recommendation is based on efficient restoration of drainage function, cost, protection of the drainage system and low, long term repair and maintenance costs; and

WHEREAS, the public concerns expressed at the hearing indicated a public preference for lower cost, increased functionality and long term protection of the function of the drainage system; and

WHEREAS, the public comments and the Board's analysis of the alternatives provided by the engineer lead the Board to conclude that the engineer's recommended alternative 4 (\$161,443), though not the least expensive alternative (alternative 1, \$148,274; alternative 2 (\$183,950); and alternative 3, \$154,816), will best provide the protection that is desired for the tile, accessibility required by existing private drainage tile, and restoration of hydraulic capacity; and

WHEREAS, alternative 1 may cause interference with the function of private tile connecting with the drainage system from the east and will require the acquisition of additional right of way and damage payment, alternative 2 is the most expensive alternative and will require the acquisition of additional right of way and damage payment, and alternative 3 will result in a shallow laid tile that will likely be prone to future damage and increase maintenance costs; and

WHEREAS, the Board restates its findings that Branch 2 of LCD 58 is failing and in need of repair and the repair of Branch 2 of LCD 58 is necessary to restore the hydraulic efficiency of the system and to protect the system from further deterioration; and

WHEREAS, the Board further finds, based on the repair report, the repair report amendments and the evidence presented, that the recommended repair is necessary for the best interests of the affected property owners.

THEREFORE, based upon findings above, the Board makes the following:

ORDER

1. That Branch 2 of LCD 58 be repaired according to the engineer's recommended repair alternative 4 as indicated in the engineer's repair report amendment dated June 10, 2015.
2. The engineer shall specify best management practices to protect the sole surface intake on Branch 2 of LCD 58 to include an intake structure and grass buffer.
3. The shallow swale that follows the alignment of the tile portion of Branch 2 of LCD 58 shall be maintained as a grass waterway of at least 6 foot width.
4. That the engineer prepare plans and specifications for the repair and bid the project.
5. That the drainage authority authorizes the engineer and staff to proceed as provided in statutes sections 103E.501, et seq. and reserves to itself those actions required by the drainage code to be taken by the drainage authority.
6. That if a contract is awarded for the repair, the assessment for repair of Branch 2 of LCD 58 be divided over a period of at least 2 years in order to satisfy the requirements of statutes section 103E.705, subd. 6 which limits annual repair assessments to an amount less than \$100,000.

The motion was seconded by Commissioner Gliszinski, and after discussion, the motion Passed and the findings and order were Adopted by a vote of 5 yes and 0 no.

Cindy Shaugnessy and Public Health staff presented the Public Health 2014 Annual Agency Evaluation.

On motion by Gliszinski, seconded by King and unanimously approved, the Board approved the following claims:

Warrant #	Vendor Name	Amount
37382	Aquatic Gardens & Landscaping Inc.	\$ 4,096.64
37386	Bolton & Menk Inc.	\$ 3,310.00
37393	Contech Engineered Solutions LLC	\$ 11,225.79
37413	Loken's Parking Lot Painting & Sweeping	\$ 3,200.00
37425	Prairie Restorations Inc.	\$ 29,250.00
37428	Regents of the University of MN	\$ 2,031.75
37433	Simplexgrinnell	\$ 9,870.50
37444	Waseca Co. Public Health	\$ 2,288.40
57 Claims paid less than \$2,000.00:		\$ 19,650.62
8 Claims paid more than \$2,000.00:		\$ 65,273.08
65 Total all claims paid:		\$ 84,923.70

On motion by Gliszinski, seconded by King and unanimously approved, the Board adjourned until Tuesday, September 15, 2015 at 9:00 a.m.

ATTEST: _____
Le Sueur County Administrator Le Sueur County Chairman

Summary Minutes of Le Sueur County Board of Commissioners Meeting, September 1, 2015

- This is only a summary publication per MN Statutes 375.12 and 331A.01 sub. 10. The complete minutes are on file in the Le Sueur County Administrator's Office at 88 S Park Ave. Le Center, MN and are available at www.co.le-sueur.mn.us.
 - The Le Sueur County Board of Commissioners met in regular session on Tuesday, September 1, 2015 at 9:00 a.m. in the Courthouse at Le Center, Minnesota. Those members present were: Steve Rohlfsing, Lance Wetzel, Dave Gliszinski, John King and Joe Connolly. Darrell Pettis and Brent Christian were also present.
 - The Board approved the agenda for the business of the day. (Connolly-Rohlfsing)
 - The Board approved the consent agenda: (Gliszinski-King) Approved the August 25, 2015 County Board Minutes and Summary Minutes.
 - The following cases and claims were approved: (King-Gliszinski)
Soc Serv: \$ 42,413.48 and Financial: \$ 22,480.82
 - The Board approved to move forward with the Human Services remodel. (Rohlfsing-Connolly)
 - At 10:00 a.m. the Board reconvened the County Ditch #58, Branch #2 Public Hearing. There were no public comments.
 - The Board approved to close the Public Hearing at 10:40 a.m. (Rohlfsing-Connolly)
 - The Board approved the following: (Rohlfsing-Gliszinski)
 1. That Branch 2 of LCD 58 be repaired according to the engineer's recommended repair alternative 4 as indicated in the engineer's repair report amendment dated June 10, 2015.
 2. The engineer shall specify best management practices to protect the sole surface intake on Branch 2 of LCD 58 to include an intake structure and grass buffer.
 3. The shallow swale that follows the alignment of the tile portion of Branch 2 of LCD 58 shall be maintained as a grass waterway of at least 6 foot width.
 4. That the engineer prepare plans and specifications for the repair and bid the project.
 5. That the drainage authority authorizes the engineer and staff to proceed as provided in statutes sections 103E.501, et seq. and reserves to itself those actions required by the drainage code to be taken by the drainage authority.
 6. That if a contract is awarded for the repair, the assessment for repair of Branch 2 of LCD 58 be divided over a period of at least 2 years in order to satisfy the requirements of statutes section 103E.705, subd. 6 which limits annual repair assessments to an amount less than \$100,000.
 - The Board approved the following claims: (Gliszinski-King)

Warrant #	Vendor Name	Amount
37382	Aquatic Gardens & Landscaping Inc.	\$ 4,096.64
37386	Bolton & Menk Inc.	\$ 3,310.00
37393	Contech Engineered Solutions LLC	\$ 11,225.79
37413	Loken's Parking Lot Painting & Sweeping	\$ 3,200.00
37425	Prairie Restorations Inc.	\$ 29,250.00
37428	Regents of the University of MN	\$ 2,031.75
37433	Simplexgrinnell	\$ 9,870.50
37444	Waseca Co. Public Health	\$ 2,288.40
57 Claims paid less than \$2,000.00:		\$ 19,650.62
8 Claims paid more than \$2,000.00:		\$ 65,273.08
65 Total all claims paid: \$		84,923.70
 - The Board adjourned until Tuesday, September 15, 2015 at 9:00 a.m. (Gliszinski-King)
- ATTEST: Le Sueur County Administrator Le Sueur County Chairman

REPAIR REQUEST

We, the undersigned land owners, do hereby request the Le Sueur County Board Of Commissioners to clean out and repair Le Sueur County Ditch # 36+68 located in Section 33 Cordova township(s).

Signed

Address & Phone No:

Madeline J. J. J.

45305 Rice Lake Rd

Le Center, MN 56057

Date: 8-27-15

Description of problem: Spot Clean Ditch 36

1000 Ft Spot Clean Ditch 68

500 Ft

Needs repair
Roger Rullert
9-1-15



Le Sueur County, MN

Tuesday, September 15, 2015

Board Meeting

Item 2

9:05 am Claims (10 min)

Staff Contact:



Le Sueur County, MN

Tuesday, September 15, 2015

Board Meeting

Item 3

9:15 am Human Services (1 hour)

Staff Contact:



Department of Human Services

88 SOUTH PARK AVENUE • LE CENTER, MINNESOTA 56057-1646
507-357-2251 • FAX 507-357-6122

Human Services Board Agenda September 15th 2015 @ 9:05 a.m.

100- PRESENTATIONS:

110: New Employee Introduction - Justin Coates

200- INFORMATIONAL ITEMS:

- 210- Finance Graphs/Report;
- 220- Income Maintenance/Child Support Graphs;
- 230- Family Services Graphs-
 - 231- Social Services Team
 - 232- Child Services Team
 - 232.1- Out Of Home Placement Report
 - 232.2- In-Home Family Therapy Report;
 - 233- Behavioral Health Team

300- BOARD APPROVAL ITEMS:

310 - Commissioner's Warrants



Le Sueur County, MN

Tuesday, September 15, 2015

Board Meeting

Item 4

10:00 am Set 2016 Preliminary Levy (10 min)

Staff Contact:

2016 Budgets -- Proposed

Department	Revenue	Expenditures	Levy \$ Needed
001 – Commissioners	15,120	286,340	271,220
011 – District Court	3,300	52,150	48,850
019 – Law Library **	15,000	28,000	13,000
020 - Drug Court	0	145,389	145,389
039 – Land Rec Dept	66,000	166,349	100,349
040 – Finance	29,500	112,100	82,600
041 – License Bureau	109,440	111,064	1,624
043 – Machine Room	10,200	189,150	178,950
044 – Auditor/Treasurer	13,150	502,284	489,134
045 – Assessor	6,200	533,978	527,778
046 – Gen Govt	947,874	377,148	-570,726
047 – Remonumentation	0	36,800	36,800
049 - Human Resources	0	185,861	185,861
060 – Data Processing	200	770,554	770,354
061 – Election	1,350	54,100	52,750
062 – County Administrator	500	200,690	200,190
090 – Co Attorney	0	681,062	681,062
091 – Co Attorney Cont	0	11,000	11,000
100 – Co Recorder	195,000	296,623	101,623
101- Rec Tech Fund **	62,000	128,340	66,340
110 – Maintenance	83,000	408,952	325,952
120 – Veterans Service	2,500	255,964	253,464
122 – Planning & Zoning	96,100	317,136	221,036
123 – HRA	0	10,025	10,025
124 – Public Health	1,878,008	2,215,481	337,473
126 – Sr Citizens	0	47,000	47,000
127 – Forfeit Tax	2,250	10,000	7,750
200 – Law Enforcement	193,420	1,830,245	1,636,825
201 – Crim Inv	0	357,096	357,096
202 – B & W	12,420	42,213	29,793
203 – Sheriff Cont #2	2,000	0	-2,000
204 – Sheriff Cont #1	0	2,000	2,000
205 – Coroner	0	36,000	36,000
208 – E911 County	2,000	11,864	9,864
209 – Tobacco Compl	2,500	0	-2,500
210 – Snowmobile Safety	4,000	3,380	-620
212 – E911 State	104,205	66,000	-38,205
214 – OHV/ATV	4,000	6,000	2,000
250 – Jail	38,000	1,711,830	1,673,830
251 – Probation	80,000	391,758	311,758
280 – Emergency Mgmnt	28,471	122,163	93,692
602- SWCD	102,659	319,610	216,951
603 – Ag Inspector	0	12,664	12,664
** use reserves			
TOTAL	4,110,367	13,046,363	8,935,996

Department	Revenue	Expenditures	Levy \$ Needed
300 – R & B – Adm	10,975,011	680,699	-10,294,312
301 – R & B –Const	0	13,310,958	13,310,958
302 – R & B – Maint	0	2,758,340	2,758,340
303 – R & B – Shop	0	898,262	898,262
304 – R & B - Bonds	4,029,473	429,554	-3,599,919
TOTAL	15,004,484	18,077,813	3,073,329
043 – Machine Room	17,200	17,200	0
426 – SCORE	105,938	105,938	0
427 – Solid Waste (Reserves)	232,900	209,944	-22,956
428 – Water Planning (Levy)	68,750	81,586	12,836
436 – Feedlot Grant	45,557	44,826	-731
438 – ISTS	23,600	18,600	-5,000
440 – State Shoreland Grt	4,918	4,918	0
443 – Wastewater Bd 2006B	1,200	1,200	0
450 - LCCMR So MN Lake	89,300	89,300	0
452-LSC Lower MN Proj	700	700	0
453-Aquatic Species Aid	158,000	158,000	0
454-FRST Lakes	166,400	166,400	0
455-Lake Volney Targeted Restoration	162,620	162,620	0
TOTAL	1,077,083	1,061,232	-15,851
Fund 30 – B & I Dept 971	0	1,977,440	1,977,440
Fund 40 – Cap Imp			
Fund 02 - Victim Witness	80,200	83,462	3,262
111- Building	0	190,000	190,000
129-German/Jefferson	0	168,990	168,990
525 – Park	55,214	290,405	235,191
600 – County Fair	0	26,331	26,331
601 – Ext Services	4,375	188,403	184,028

**PROPOSED 2016
RECAP OF EXPENDITURES
LE SUEUR COUNTY**

			USE OF	
FUND	TAXES	OTHER REVENUES	FUND BALANCE	TOTAL
REVENUE	8,856,656	4,110,367	79,340	13,046,363
ROAD & BRIDGE	3,073,329	15,004,484		18,077,813
SS & PA	2,573,655	2,240,980	244,707	5,059,342
PA & GA	1,064,573	1,152,250	119,720	2,336,543
FAIR (600)	26,331			26,331
BUILDING (111)	190,000			190,000
EXT SERVICES (601)	184,028	4,375		188,403
PARK (525)	235,191	55,214		290,405
GERMAN/JEFFERSON(129)	168,990			168,990
BONDED INDEBT	1,977,440			1,977,440
WATER PLANNING	12,836	1,077,083	-28,687	1,061,232
VICTIM WITNESS	3,262	80,200		83,462
TOTAL	18,366,291	23,724,953	415,080	42,506,324

2016 PROPOSED LEVY

<u>FUND</u>	<u>TAXES</u>	<u>PROGRAM AID</u>	<u>TOTAL</u>
Revenue	8,856,656	512,639	8,344,017
Road & Bridge	3,073,329	512,639	2,560,690
SS & PA	2,573,655		2,573,655
PA & GA	1,064,573		1,064,573
Fair	26,331		26,331
Building	190,000		190,000
Extension Services	184,028		184,028
Park	235,191		235,191
German/Jefferson	168,990		168,990
Bonded Indebtedness	1,977,440		1,977,440
Water Planning	12,836		12,836
Victim Witness	3,262		3,262
TOTAL	18,366,291	1,025,278	17,341,013

2016 PROPOSED LEVY \$ 17,341,013

2015 FINAL LEVY \$ 16,077,551

INCREASE IN LEVY \$ 1,263,462

INCREASE OF 7.9%



Le Sueur County, MN

Tuesday, September 15, 2015

Board Meeting

Item 5

10:10 am Jim McMillen, Maintenance (10 min)

RE: Security Cameras

RE: Smart TV at Information Desk

Staff Contact:



Le Sueur County, MN

Tuesday, September 15, 2015

Board Meeting

Item 6

10:20 am Justin Lutterman, GIS (20 min)

RE: Implementation and Training of new GIS software

RE: Pictometry Contract (Aerial Imagery)

Staff Contact:



Le Sueur County, MN

Tuesday, September 15, 2015

Board Meeting

Item 7

10:40 am Mike Schultz (10 min)

RE: Gravel Tax Project

Staff Contact:



Le Sueur County Soil & Water Conservation District

Le Sueur County SWCD
181 W Minnesota St
Le Center, MN 56057

Tel. (507) 357-4879 Ext. 3
Website: www.lesueurswcd.org

9/4/2015

Le Sueur County Rice Lake WPA Wetland Restoration Montgomery Township, Section 12

The Le Sueur County SWCD and Environmental Services have been working with the US Fish and Wildlife Service to restore a 16 acres wetland on the Rice Lake WPA. The wetland restoration was identified by the Le Sueur County LCCMR Grant to restore the basin. The Wetland has a 3 square mile watershed that feed through the 16 acre wetland. The project needed an engineered steel sheet pile outlet structure (similar to the 2009 Renneberg CD 28 outlet). The SWCD has engineered plans and all bids have been received for this project. The cost came in much higher than previously planned so the project is on hold until we can acquire the remaining funds.

Costs:

Lowest Bid Received:	\$62,526
<u>Engineering:</u>	<u>\$10,362</u>

Total:	\$72,888
---------------	-----------------

Project funds:

LCCMR Grant Amount:	\$40,000
LCCMR Grant Amendment:	\$8,000

<u>Local Sportsmen Groups Contribution:</u>	<u>\$14,500</u>
---------------------------------------------	-----------------

Total:	\$62,500
---------------	-----------------

Balance:

Approximate Request Amount:	\$10,388
------------------------------------	-----------------

Aggregate Tax
Restoration Fund
\$373,964.05

I am requesting **\$10,500 of gravel tax funds** for this project. This project will provide 16 acres of wetland storage in the Sand Creek Watershed/ CD 54 where additional storage is desperately needed. This project is shovel ready and contractor is on standby to complete. The LCCMR funds for this project **expire at the end of 2015**.

Sincerely,

A handwritten signature in blue ink, appearing to read "Michael Schultz", with a stylized flourish at the end.

Michael Schultz
Senior District Technician

CONSTRUCTION NOTES:

THE U.S. FISH AND WILDLIFE SERVICE IS RESPONSIBLE FOR OBTAINING ANY NECESSARY PERMITS OR APPROVALS FOR THE PROJECT.

BEFORE START OF CONSTRUCTION, THE OWNER OF ANY UTILITIES INVOLVED MUST BE NOTIFIED. THE EXCAVATOR IS RESPONSIBLE FOR GIVING NOTICE BY CALLING "GOPHER STATE ONE-CALL" AT (800) 252-1166 AT LEAST 48 HOURS PRIOR TO ANY EXCAVATION.

THE CONTRACTOR SHALL COORDINATE WITH THE OWNER TO LOCATE ANY PRIVATE UTILITIES THAT MAY BE IN THE VICINITY OF THE PROJECT. THE SOUTH CENTRAL TECHNICAL SERVICE AREA MAKES NO REPRESENTATION OF THE EXISTENCE OR NON-EXISTENCE OF UTILITIES. THE ABSENCE OF UTILITIES ON DRAWINGS DOES NOT ASSURE THAT THERE ARE NO UTILITIES ON SITE.

A PRE-CONSTRUCTION CONFERENCE WITH THE OWNER, CONTRACTOR(S), SWCD REPRESENTATIVE, AND SOUTH CENTRAL TSA ENGINEER OR TECHNICIAN SHALL BE HELD ONE WEEK PRIOR TO START OF CONSTRUCTION. ANY WORK DONE BEFORE CONFERENCE WILL JEOPARDIZE PROJECT APPROVAL AND FUNDING.

THE SPECIFICATIONS INCLUDED IN THE PROJECT MANUAL APPLY TO ALL MATERIALS AND CONSTRUCTION WORK. THESE SPECIFICATIONS ARE PART OF THIS PLAN.

SEE THE BID SCHEDULE FOR GENERAL TERMS AND CONDITIONS, METHODS OF MEASUREMENT, AND PAYMENT INFORMATION.

CHANGES IN THE DRAWINGS OR SPECIFICATIONS MUST BE AUTHORIZED BY THE OWNER AND THE RESPONSIBLE ENGINEER.

RESTORATION NOTES:

TOP-DRESS THE PROPOSED EMBANKMENTS WITH A MINIMUM OF 6 INCHES OF TOPSOIL.

DISTURBED AREAS WILL BE SEEDDED WITH THE FOLLOWING SEED MIXTURES:

UPLAND AREAS AND EMBANKMENTS - USE MINNESOTA STATE SEED MIX 35-541 (MESIC PRAIRIE), AT A RATE OF 12 LBS PER ACRE.

WETLAND AREAS - USE MINNESOTA STATE SEED MIX 34-261 (RIPARIAN), AT A RATE OF 31.5 LBS PER ACRE.

THE WETLAND MIXTURE SHOULD BE USED IN DISTURBED AREAS BELOW ELEVATION 1033.

SEE THE SPECIFICATIONS FOR THE LISTING OF SPECIES IN EACH SEED MIX.

AREAS TO BE SEEDDED WITH THE UPLAND MIX SHALL BE FERTILIZED WITH 80 LBS/ACRE EACH OF NITROGEN (N), PHOSPHORUS (P205) AND POTASH (K2O). FERTILIZER SHALL BE SPREAD AND INCORPORATED PRIOR TO SEEDING.

FERTILIZER IS NOT REQUIRED IN AREAS TO BE SEEDDED WITH THE WETLAND MIXTURE.

DISTURBED AREAS SHALL BE PROTECTED WITH STRAW MULCH MEETING THE REQUIREMENTS OF MNDOT STANDARD SPECIFICATION 3882, TYPE 1. THE MULCH SHALL CONSIST OF GRAIN STRAW ONLY. MULCH SHALL BE APPLIED AT A RATE OF 2 TONS PER ACRE, AND DISK-ANCHORED.

ESTIMATED QUANTITIES					
ITEM	ITEM DESCRIPTION	QUAN.	UNIT	CONST. SPEC.	MATERIAL SPEC.
1	MOBILIZATION	1	L.S.		
2	CLEARING & GRUBBING	1	L.S.	MN-2	
3	REMOVE AND DISPOSE OF EXISTING 48" CMP CULVERT.	1	L.S.		
4	SALVAGING & SPREADING TOPSOIL. Includes: 0.5' topsoil excavation. (See earthwork summary this sheet)	1	L.S.	MN-26	
5	EARTHWORK-EARTHFILL-Includes: (See earthwork summary this sheet) (See sheet 2 for details)	1708	C.Y. (P)	MN-23	
6	EXCAVATION - GRADING SPILLWAY. Includes: (embankment #2 and #3)	2	EACH	MN-21	
7	FURNISH & INSTALL STEEL WEIR STRUCTURE. Includes: (steel weir, top cap, stoplog locking mechanism, and stoplogs. (see sheet 4 for details)	1	L.S.	SP-1 SP-2 SP-3	
8	FURNISH & INSTALL MUSKRAT FENCING (8 FT) ON PROPOSED EMBANKMENTS. (See sheet 4 for detail)	1450	L.F.	SEE SHEET 4	
9	FURNISH & INSTALL GEOTEXTILE FABRIC, NON-WOVEN CLASS I (See sheet 3 for details)	300	S.Y.	SEE SHEET 4	MN-592
10	FURNISH & INSTALL RIPRAP (QUARTZITE) - MNDOT CLASS III (See sheet 3 for details)	183	TONS	SEE SHEET 4	
11	FERTILIZE	2.0	AC.	MN-6	
12	SEEDING - UPLAND AND EMBANKMENT MIX	2.0	AC.	MN-5	
13	SEEDING - WETLAND MIX	1.0	AC.	MN-6	
14	MULCHING	3.0	AC.	MN-6	

EARTHWORK SUMMARY

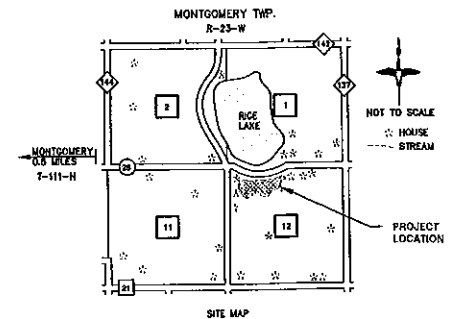
LOCATION	EARTHFILL (ITEM 5)	SALVAGE & SPREAD TOPSOIL (ITEM 4)
EMBANKMENT 1	309 C.Y.	124 C.Y.
EMBANKMENT 2	824 C.Y.	211 C.Y.
EMBANKMENT 3	575 C.Y.	160 C.Y.
BORROW AREAS	---	427 C.Y.
TOTAL	1,708 C.Y.	922 C.Y.

NOTES
1. ASSUMES 6 INCHES OF TOPSOIL.
2. EARTHFILL OBTAINED FROM LOCATIONS SHOWN ON PLANS.

OUTLET STRUCTURE

U.S. FISH & WILDLIFE SERVICE RICE LAKE WATERFOWL PRODUCTION AREA

MONTGOMERY TWP. LE SUEUR COUNTY



SHEET INDEX

SHEET NO.	TITLE
1	COVER SHEET
2	PLAN VIEW SHEET
3	EMBANKMENT #1 PROFILE
4	CAP & STOPLOG GUIDE DETAILS
5	STOPLOG LOCKING DETAILS
6	STOPLOG DETAILS
7	EMBANKMENT 2&3 PLAN/PROFILE

ENGINEERING DESIGN DATA
WATERSHED AREA = 3.8 SQUARE MILES

CONSTRUCTION CERTIFICATION STATEMENT

I HEREBY CERTIFY THAT A FINAL INSPECTION OF THIS PROJECT HAS BEEN PERFORMED AND THAT THE WORK COMPLETED IS IN ACCORDANCE WITH THE PLAN AND SPECIFICATIONS. ANY CHANGES TO THE PLANS AND SPECIFICATIONS ARE SO NOTED.

SIGNATURE:

DATE:

I HEREBY CERTIFY THAT THIS PLAN WAS PREPARED BY ME OR UNDER MY DIRECT SUPERVISION AND THAT I AM A DULY LICENSED PROFESSIONAL ENGINEER UNDER THE LAWS OF THE STATE OF MINNESOTA.

PRINT NAME: RYAN T. JONES

SIGNATURE: *Ryan T. Jones*
DATE: 7/31/15 LICENSE # 44622

SURVEY

Surveyed	Date
GPS/RTJ	9/17/14
DRAWN	Date
GPS	9/18/14
CHECKED	Date

DESIGN

Designed	Date
RTJ	2/2015
DRAWN	Date
GPS	4/2015
CHECKED	Date
RTJ	5/19/15

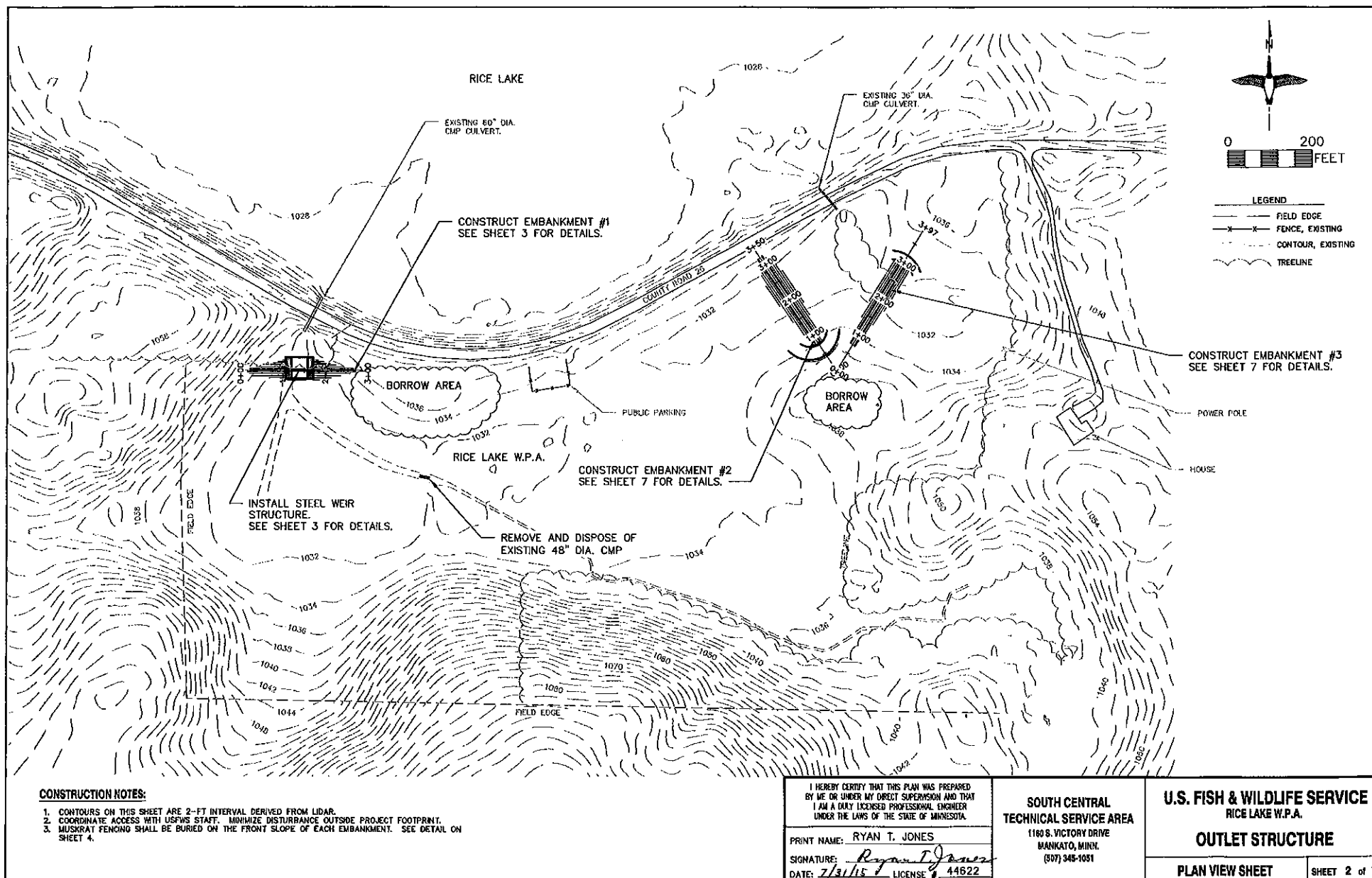
SOUTH CENTRAL
TECHNICAL SERVICE AREA
1160 S. VICTORY DRIVE
MANKATO, MINN.
(507) 345-1061

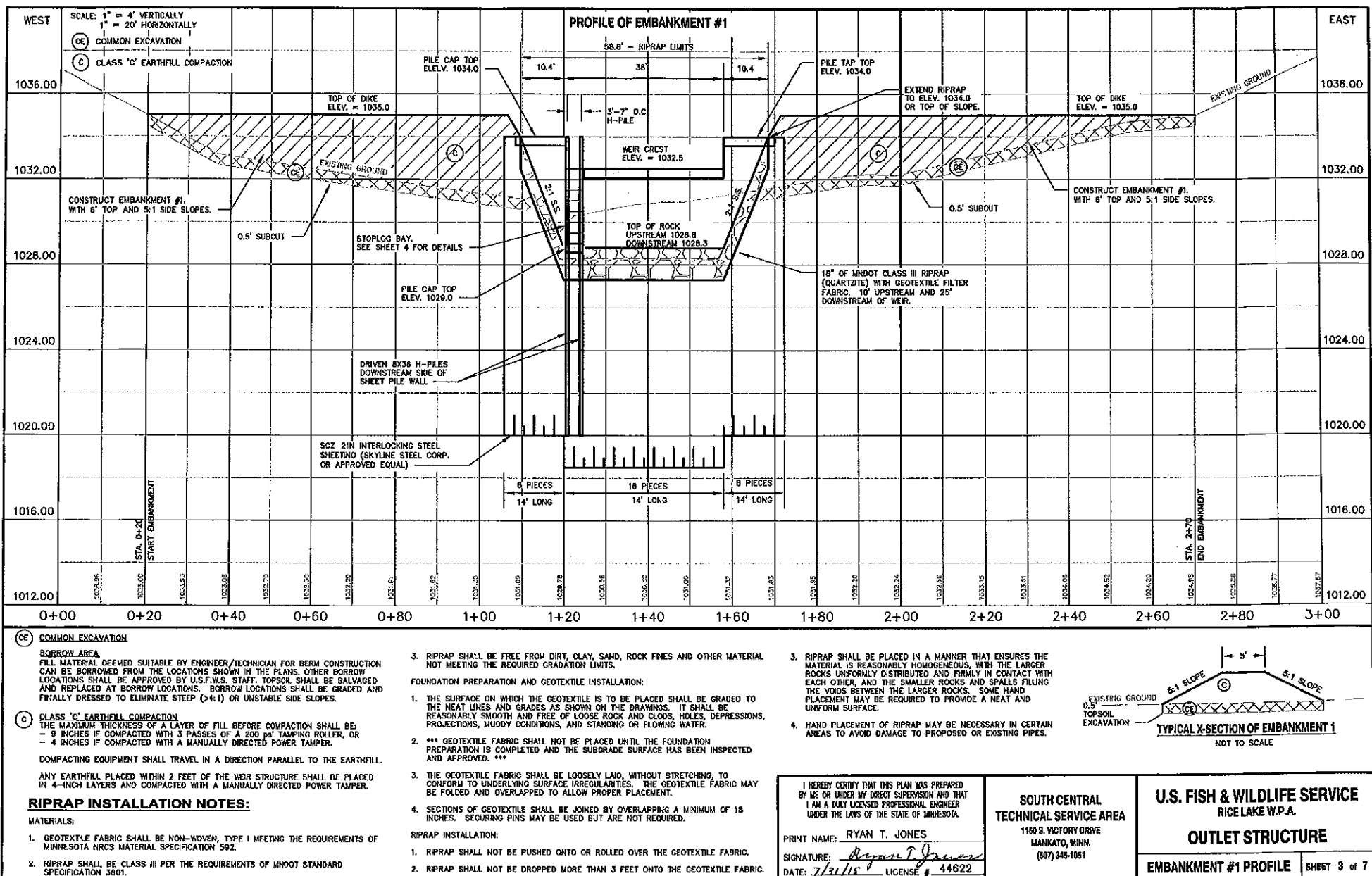
U.S. FISH & WILDLIFE SERVICE
RICE LAKE W.P.A.

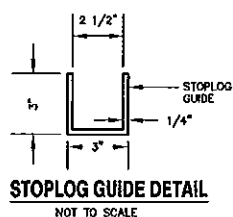
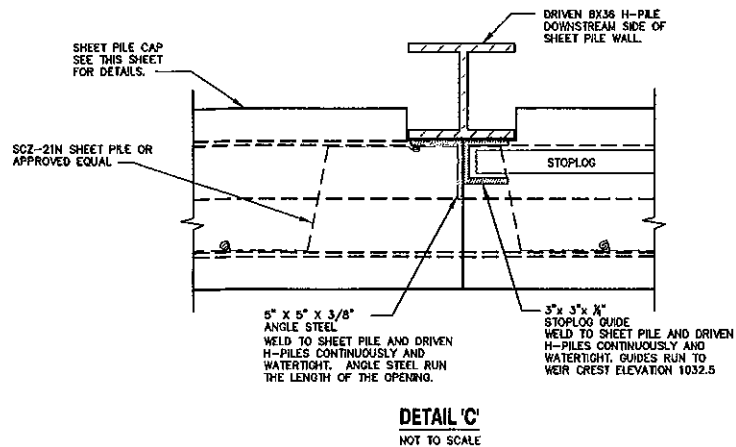
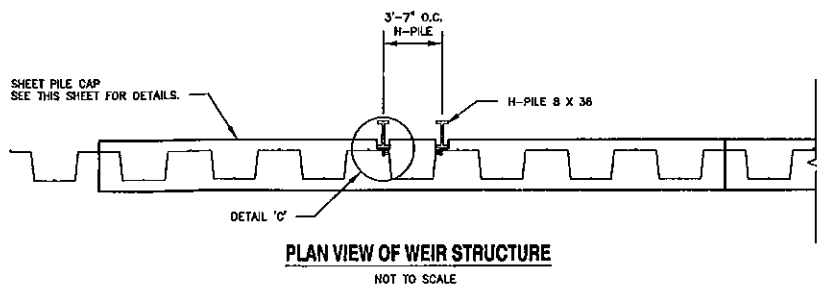
OUTLET STRUCTURE

COVER SHEET

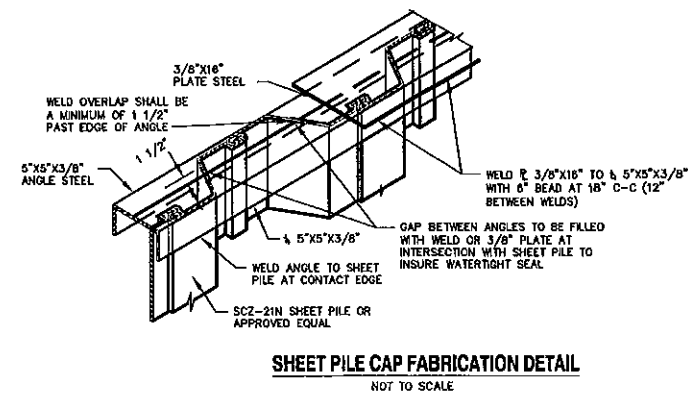
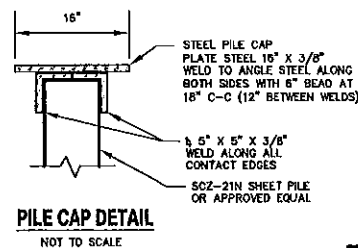
Sec. 12	T. 111 N.	R. 23 W.
County: LE SUEUR		
Township: MONTGOMERY		
Near: MONTGOMERY		SHEET 1 of 7



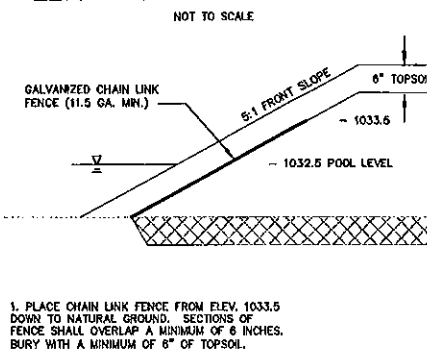




NOTE: SUPPLIER MAY SPLIT
6"x3"x1/4" TUBE STEEL TO
FABRICATE STOPLOG GUIDES.



MUSKRAT FENCING ON BERM FRONT SLOPES



1. PLACE CHAIN LINK FENCE FROM ELEV. 1033.5
DOWN TO NATURAL GROUND. SECTIONS OF
FENCE SHALL OVERLAP A MINIMUM OF 6 INCHES.
BURY WITH A MINIMUM OF 6\"/>

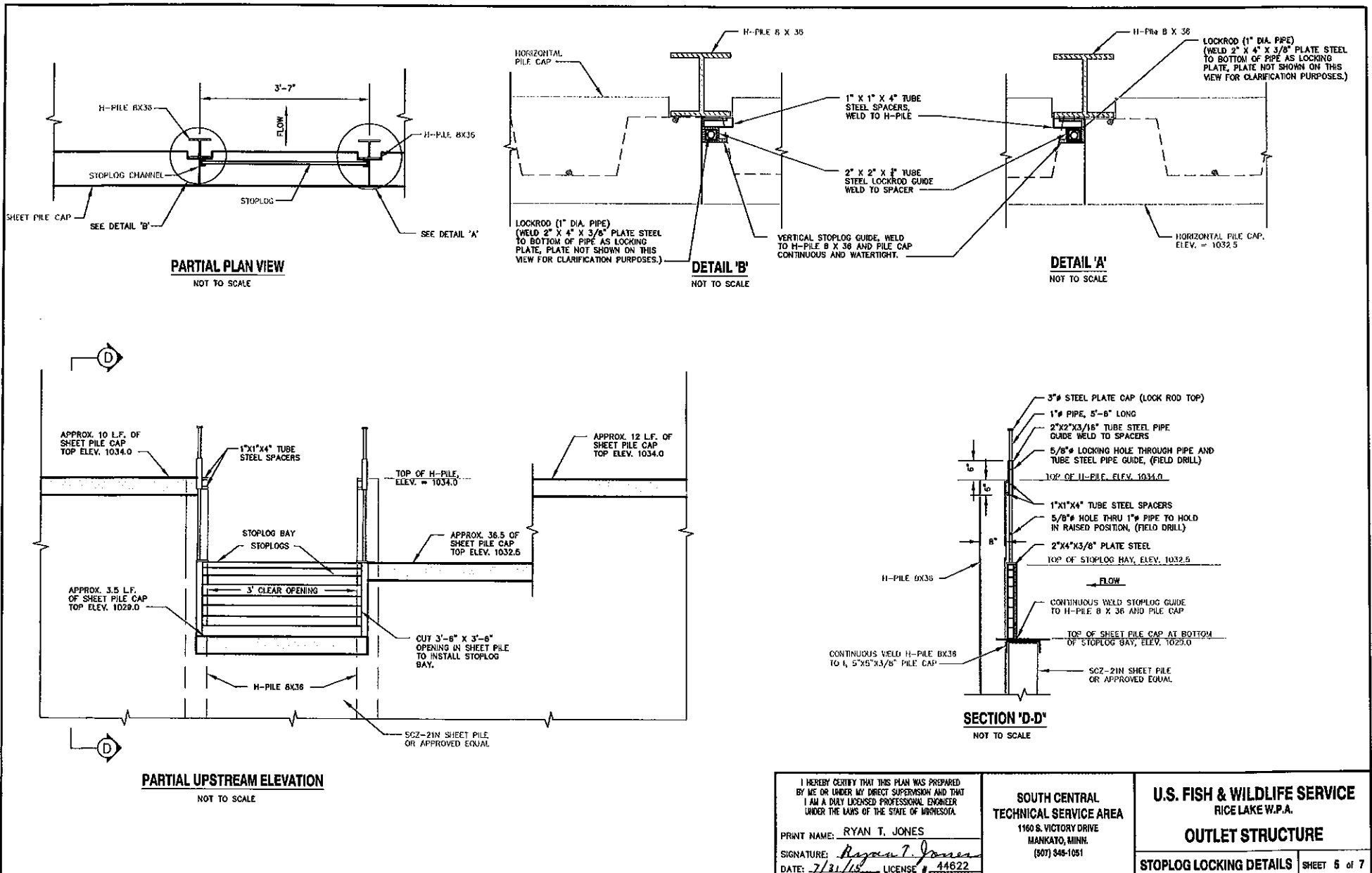
I HEREBY CERTIFY THAT THIS PLAN WAS PREPARED
BY ME OR UNDER MY DIRECT SUPERVISION AND THAT
I AM A DULY LICENSED PROFESSIONAL ENGINEER
UNDER THE LAWS OF THE STATE OF MINNESOTA.

PRINT NAME: RYAN T. JONES
SIGNATURE: *Ryan T. Jones*
DATE: 7/31/15 LICENSE # 44622

**SOUTH CENTRAL
TECHNICAL SERVICE AREA**
1160 S. VICTORY DRIVE
MANKATO, MINN.
(507) 345-1051

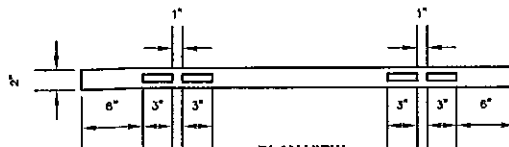
U.S. FISH & WILDLIFE SERVICE
RICE LAKE W.P.A.
OUTLET STRUCTURE

CAP AND STOPLOG GUIDE DETAILS SHEET 4 of 7

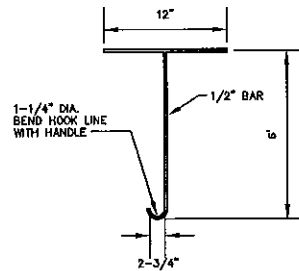


ALUMINUM STOPLOG AND LIFTING HOOK DETAIL

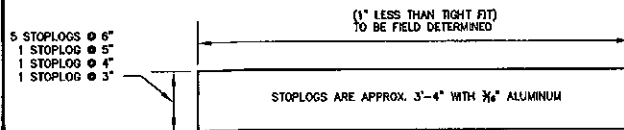
NOT TO SCALE



PLAN VIEW
NOT TO SCALE



2 REQUIRED



FRONT VIEW
NOT TO SCALE

CONSTRUCTION SPECIFICATIONS

GENERAL

1. REFER TO THE PROJECT MANUAL FOR SPECIFICATIONS ON MATERIALS AND CONSTRUCTION.

STEEL WEIR

1. ALL WELDS SHALL BE 1/4" FILLET WELDS.
2. ALL WELDS SHALL BE SUBJECT TO LAMPING. ANY AREAS FAILING WILL BE REWELDED BEFORE ACCEPTANCE OF THE PROJECT.
3. THE TOP OF SHEET PILE SHALL BE TRIMMED TO GRADES INDICATED ON PLANS TO REMOVE ANY DAMAGE CAUSED BY DRIVING.
4. ABOVE ELEVATION 1032.5, THE PILE CAP NEED NOT BE WATERTIGHT. WELDS SHALL CONSIST OF A 6" BEAD AT 18" C-C (12" BETWEEN WELDS).
5. THE LENGTH OF THE PILE CAP IS SHOWN ON THE PLANS.
6. ALL WELDS AROUND THE STOPLOG BAY SHALL BE CONTINUOUS TO ENSURE A WATERTIGHT SEAL.

ALUMINUM STOPLOGS

1. ALUMINUM STOPLOGS SHALL BE SUPPLIED BY THE CONTRACTOR.
2. THE CONTRACTOR SHALL CUT STOPLOGS TO PROPER LENGTH AND FABRICATE THE HOLES IN ALL STOPLOGS AS SHOWN. ALTERNATIVELY, THE CONTRACTOR MAY ORDER STOPLOGS FROM THE MANUFACTURER AFTER THE WEIR STRUCTURE HAS BEEN BUILT, TO ENSURE THEY WILL FIT IN THE STOPLOG GUIDES AS CONSTRUCTED.
3. THE FINISHED SURFACE SHALL BE SMOOTH TO PROVIDE A FLAT SURFACE FOR THE STOPLOG ABOVE IT.
4. STOPLOGS SHALL BE CONSTRUCTED OF 6063 ALUMINUM, (±3.42 LBS/FT)

STEEL WEIR STRUCTURE ITEMS

STEEL PILING	TOTAL QUANTITY
14 L.F. - SC2-21N SHEET PILING OR APPROVED EQUAL	28 EA.
TOTAL SQUARE FEET	931 SQ.FT.
WEIR TOP PLATE	
5" X 5" X 3/8" ANGLE STEEL	124 L.F.
16" X 3/8" TOP PLATE STEEL	62 L.F.
H-BEAM	
14 L.F. H-PILE 8-36	2 EA.
STOPLOG GUIDE	TOTAL QUANTITY
3" X 3" X 1/4" (2 1/2" INSIDE DIMENSION) CHANNEL STEEL	7 L.F.
5" X 5" X 3/8" ANGLE STEEL	7 L.F.
ALUMINUM STOPLOGS	
STOPLOGS ARE APPROX. 3'-4". ACTUAL LENGTH TO BE FIELD DETERMINED.	
2" X 6" X 3/16" RECTANGULAR STRUCTURAL TUBING	5 EACH
2" X 5" X 3/16" RECTANGULAR STRUCTURAL TUBING	1 EACH
2" X 4" X 3/16" RECTANGULAR STRUCTURAL TUBING	1 EACH
2" X 3" X 3/16" RECTANGULAR STRUCTURAL TUBING	1 EACH
STOPLOG LOCKING MECHANISM	
3" X STEEL PLATE CAP (LOCK ROD TOP)	2 EA.
1" X STEEL PIPE (LOCK ROD)	11 L.F.
TUBE STEEL 2" X 2" X 3/16" (PIPE GUIDE)	2 L.F.
TUBE STEEL 1" X 1" X 1/4" (PIPE GUIDE SPACERS)	16 IN.
PLATE STEEL 2" X 4" X 3/8" (LOCKING PLATE)	2 EA.

CHANNEL STABILIZATION QUANTITIES

GEOTEXTILE FABRIC (NON-WOVEN, NRCS CLASS I)	300 SQ. YDS.
RIPRAP (MNDOT CLASS II) (QUARTZITE)	163 TONS

I HEREBY CERTIFY THAT THIS PLAN WAS PREPARED BY ME OR UNDER MY DIRECT SUPERVISION AND THAT I AM A DULY LICENSED PROFESSIONAL ENGINEER UNDER THE LAWS OF THE STATE OF MINNESOTA.

PRINT NAME: RYAN T. JONES

SIGNATURE: *Ryan T. Jones*

DATE: 7/31/15 LICENSE # 44822

SOUTH CENTRAL TECHNICAL SERVICE AREA

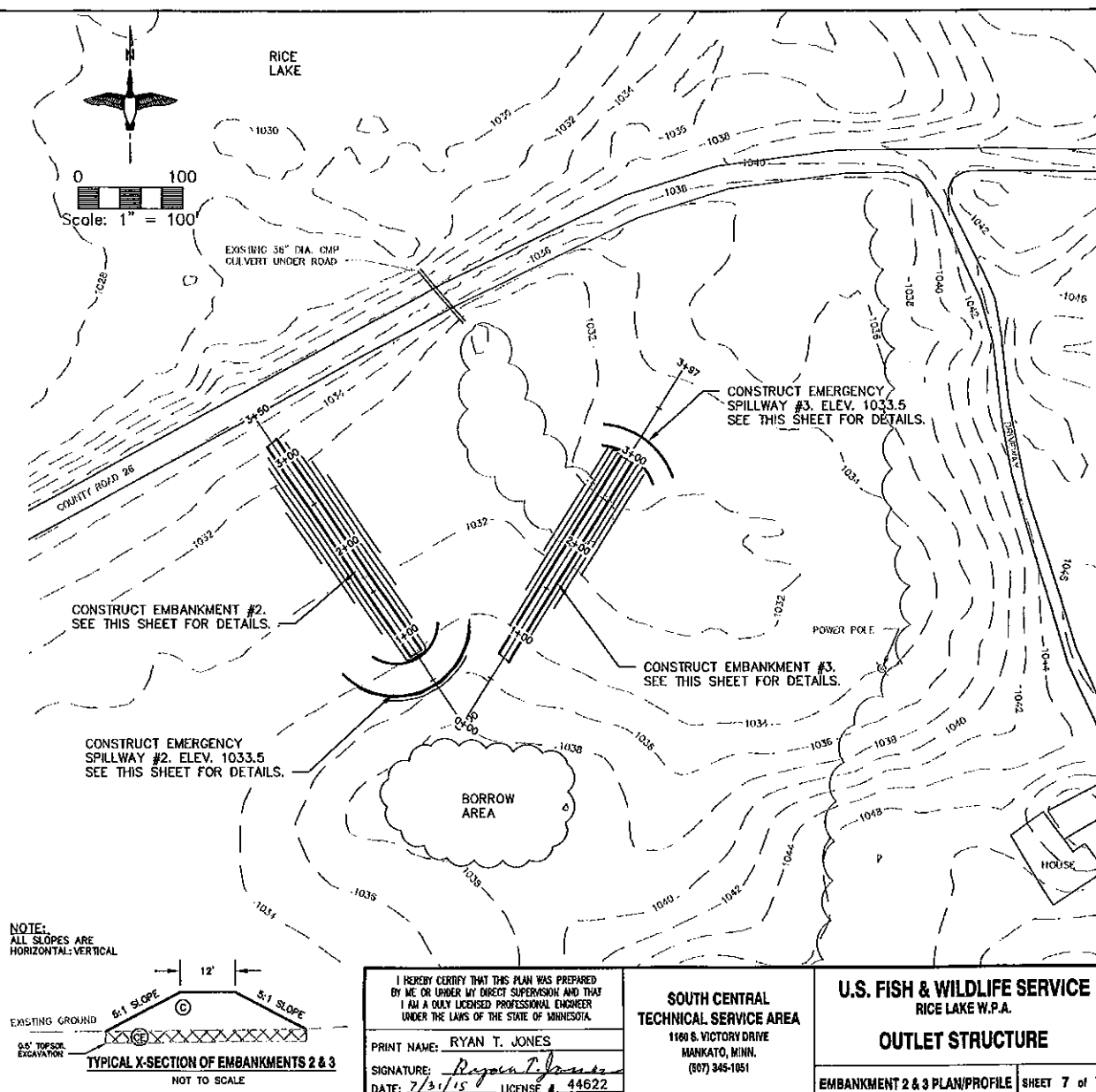
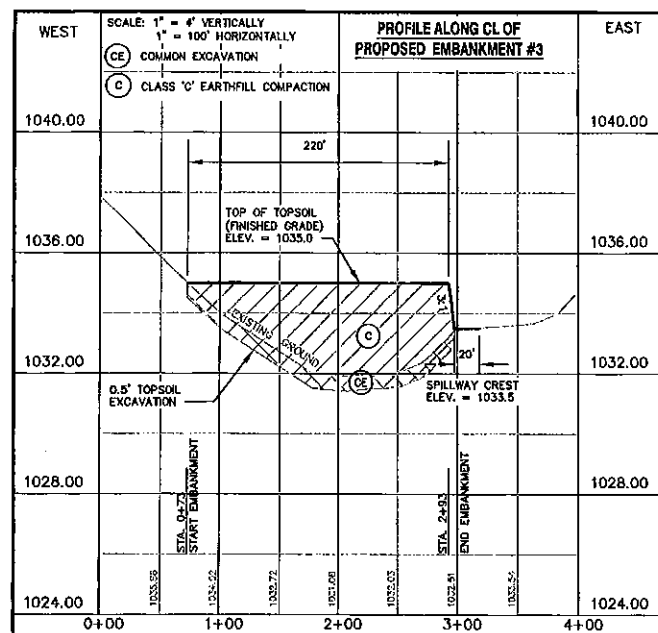
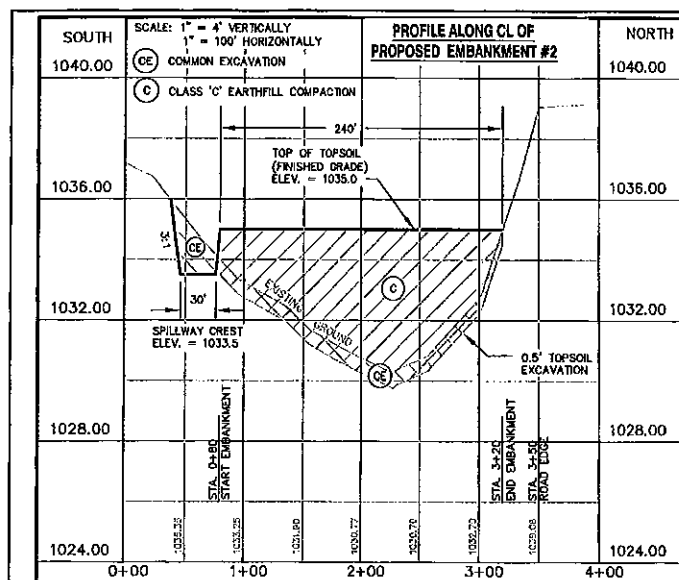
1180 S. VICTORY DRIVE
MANKATO, MINN.
(607) 345-1051

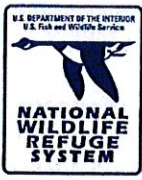
U.S. FISH & WILDLIFE SERVICE
RICE LAKE W.P.A.

OUTLET STRUCTURE

STOPLOG DETAILS

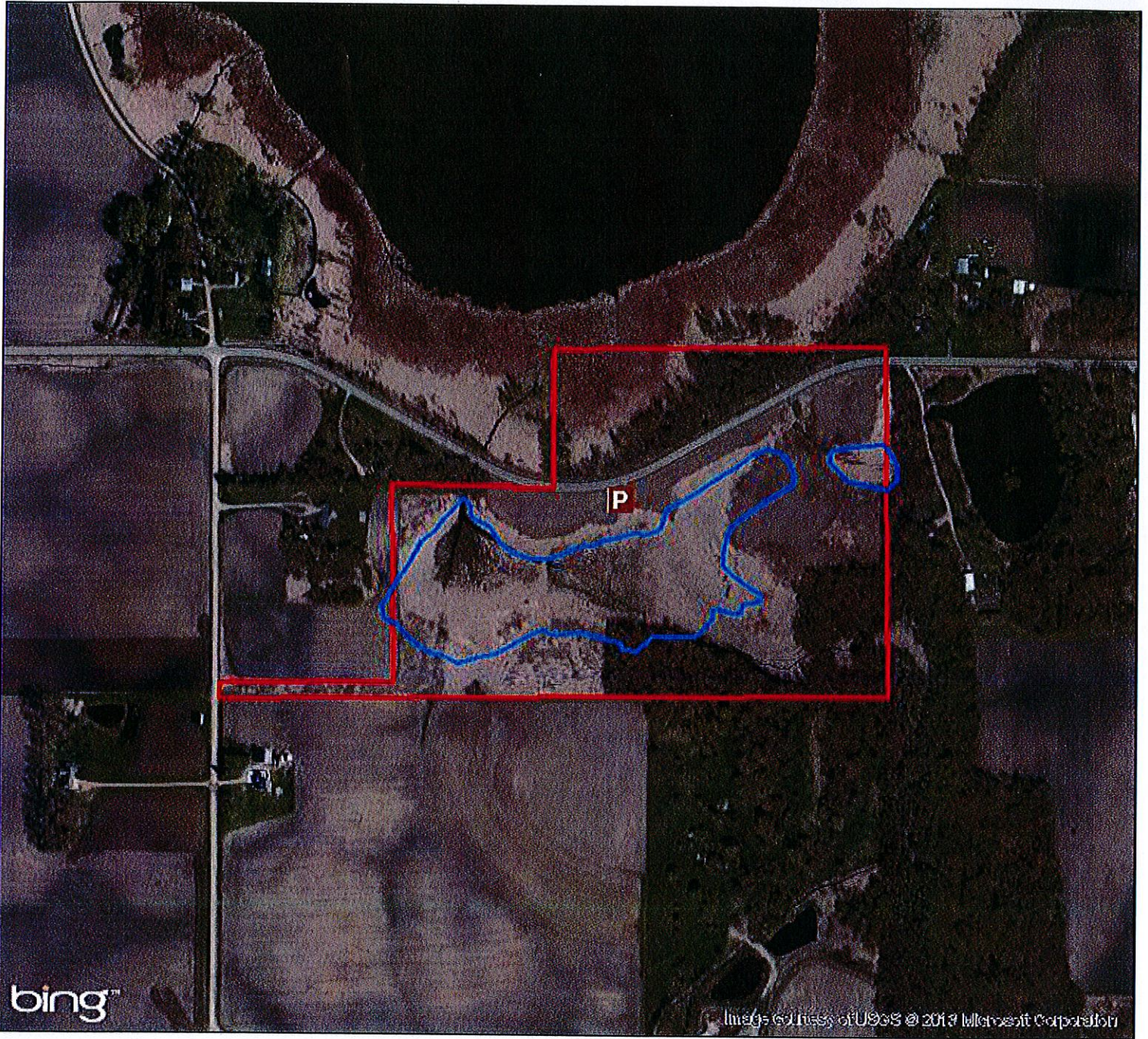
SHEET 6 of 7





U.S. FISH AND WILDLIFE SERVICE

Rice Lake WPA



P

Parking Lot



Proposed
Wetland Extent



WPA Boundary

Le Sueur County
Montgomery Township
Section 12



0 0.15 0.3 0.45
Miles



Le Sueur County, MN

Tuesday, September 15, 2015

Board Meeting

Item 8

10:50 am John Bruender (10 min)

RE: German-Jefferson Ordinance

Staff Contact:



Le Sueur County, MN

Tuesday, September 15, 2015

Board Meeting

Item 9

11:00 am Human Resources (10 min)

Staff Contact:



Human Resources

88 SOUTH PARK AVENUE • LE CENTER, MINNESOTA 56057
Telephone: 507-357-8517 • Fax: 507-357-8607
Cindy Westerhouse – Human Resources Director

HUMAN RESOURCES AGENDA ITEMS September 15, 2015

Recommendation to end employment with employee 1872, effective September 4, 2015.

Recommendation to promote Tricia Christensen, full time Administrative Assistant II in Public Health to a full time Administrative Assistant III in Public Health, as a Grade 5, Step 3 at \$17.30 per hour, effective September 21, 2015.

Recommendation to grant regular status to Kelly Wroe, full time Deputy Auditor-Treasurer II – Motor Vehicle Specialist, in the Auditor-Treasurer Office, effective September 9, 2015. Kelly has completed the six-month probationary period. Judy Brown, Deputy Auditor-Treasurer III – Accounting Specialist/Motor Vehicle Supervisor, recommends granting regular status to Kelly.

Recommendation to advertise for a part time Deputy Sheriff, as a Grade 10, Step 1 at \$21.55 per hour.

Recommendation to post and advertise for a full time Deputy Auditor-Treasurer II – Motor Vehicle Specialist, in the Auditor-Treasurer Office, as a Grade 6, Step 1 at \$17.07 per hour.

Recommendation to accept the resignation request from Shannon Miller, full time Agency Social Worker in Human Services, effective September 25, 2015. Shannon has been an employee with Le Sueur County since July 2012.

Recommendation to post and request the merit list for a full time Agency Social Worker, in Human Services, as a Grade 10, Step 1 at \$21.55 per hour.

Equal Opportunity Employer



Le Sueur County, MN

Tuesday, September 15, 2015

Board Meeting

Item 10

11:10 am Kathy Brockway, PZ Administrator (5 minutes)

Request for Action 3- CUP's, Seely, Helmstetter and Solheid

Staff Contact:

LE SUEUR COUNTY PLANNING AND ZONING COMMISSION
September 15, 2015

TO: LE SUEUR COUNTY BOARD OF COMMISSIONERS

FROM: LE SUEUR COUNTY PLANNING AND ZONING COMMISSION

SUBJECT: "REQUEST FOR ACTION"

The Planning Commission recommends your action on the following items:

ITEM #1: CHRISTOPHER SEELY, CLEVELAND, MN, (APPLICANT/OWNER): Request that the County grant a Conditional Use Permit to allow grading, excavating, and filling of 500 cubic yards of material outside the shore impact zone in a Special Protection "SP" District, on a Natural Environment "NE" lake, Lake Henry. Property is located in the Government Lot 1, Section 34, Cleveland Township & Government Lot 3, Section 3, Cleveland Township.

Based on the information submitted by the applicant, as required by the Le Sueur County Zoning Ordinance, the Planning Commission developed the following findings for this request:

Therefore, the Planning Commission recommends approval of the application as written.

ITEM #2: STEVEN HELMSTETTER, KASOTA, MN, (APPLICANT/OWNER): Request that the County grant a Conditional Use Permit to allow grading, excavating, and filling of 1439 cubic yards of material in a Urban/Rural Residential "R1" District. Property is located in the NE 1/4 SW 1/4, Section 9, Kasota Township.

Based on the information submitted by the applicant, as required by the Le Sueur County Zoning Ordinance, the Planning Commission developed the following findings for this request:

Therefore, the Planning Commission recommends approval of the application with the following conditions:

- 1. Work in the bluff should be restricted to remain within the driving path that has been used to access the lowland area*
- 2. The trench must be filled in immediately once the pipes have been installed.*
- 3. The disturbed soils within the trench should be compacted to reduce the chances of washout.*
- 4. Silt fence needs to be correctly installed (staked and keyed into the ground) to protect the wetland and sloped areas should be covered with erosion control blanket.*
- 5. Once work is done, the entire area should be seeded with native vegetation to stabilize the area and reduce colonization from noxious weeds.*
- 6. Special attention should be payed to the weather forecast to reduce the chance of washout while work is done within the bluff.*

ITEM #3: ERIC SOLHEID CONSTRUCTION, NEW PRAGUE, MN, (APPLICANT); JOEL & DEBBIE SOLHEID, NEW PRAGUE, MN, (OWNER): Request that the County grant a Conditional Use Permit to allow grading, excavating, and filling of 330 cubic yards of material outside the shore impact zone in a Special Protection "SP" District, on an un-named stream. Property is located in the W 1/2 NW 1/4, Section 3, Derrynane Township.

Based on the information submitted by the applicant, as required by the Le Sueur County Zoning Ordinance, the Planning Commission developed the following findings for this request:

Therefore, the Planning Commission recommends approval of the application as written.

ACTION: ITEM #1: _____

ITEM #2: _____

ITEM #3: _____

DATE: _____

COUNTY ADMINISTRATOR'S SIGNATURE: _____

FINDINGS OF FACT

WHEREAS, CHRISTOPHER SEELY has applied for a Conditional Use Permit to allow grading, excavating, and filling of 500 cubic yards of material outside the shore impact zone in a Special Protection “SP” District, on a Natural Environment “NE” lake, Lake Henry. Property is located in the Government Lot 1, Section 34, Cleveland Township & Government Lot 3, Section 3, Cleveland Township.

WHEREAS, the Le Sueur County Planning and Zoning Commission held on public hearing on **September 10, 2015**, in order to hear public testimony from the applicants as well as interested parties pertaining to and as provided by the Zoning Ordinance of Le Sueur County.

WHEREAS, the Le Sueur County Planning and Zoning Commission, acting as an advisory board to the Le Sueur County Board of Commissioners recommends **denial/approval** of the application due to the following findings:

1. **The conditional use will not be injurious to the use and enjoyment of other property in the immediate vicinity for the purposes already permitted, nor substantially diminishes and impairs property values within the immediate vicinity.**
2. **The establishment of the conditional use will not impede the normal and orderly development and improvement of surrounding vacant property for uses predominant in the area.**
3. **Adequate utilities, access roads, drainage and other facilities are being provided.**
4. **Adequate measures will be taken to prevent and control offensive odor, fumes, dust, noise and vibration, so that none of these will constitute a nuisance, and to control lighted signs and other lights in such a manner that no disturbance to neighboring properties will result.**

WHEREAS, On September 15, 2015 at their regularly scheduled meeting, the Le Sueur County Board of Commissioners **APPROVED/DENIED** the Conditional Use Permit application as requested by **CHRISTOPHER SEELY**.

NOW, THEREFORE, IT IS HEREBY RESOLVED, the following Findings of Fact were adopted at the September 15, 2015, Le Sueur County Board meeting in order to protect the public health, safety and general welfare of the citizens of Le Sueur County.

1. **The conditional use will not be injurious to the use and enjoyment of other property in the immediate vicinity for the purposes already permitted, nor substantially diminishes and impairs property values within the immediate vicinity.**
2. **The establishment of the conditional use will not impede the normal and orderly development and improvement of surrounding vacant property for uses predominant in the area.**
3. **Adequate utilities, access roads, drainage and other facilities have been or are being provided.**
4. **Adequate measures have been or will be taken to prevent and control offensive odor, fumes, dust, noise and vibration, so that none of these will constitute a nuisance, and to control lighted signs and other lights in such a manner that no disturbance to neighboring properties will result.**

BE IT FURTHER RESOLVED, by the Le Sueur County Board of Commissioners that based on the above Findings of Fact, a Conditional Use Permit to allow grading, excavating, and filling of 500 cubic yards of material outside the shore impact zone in a Special Protection “SP” District, on a Natural Environment “NE” lake, Lake Henry. Property is located in the Government Lot 1, Section 34, Cleveland Township & Government Lot 3, Section 3, Cleveland Township, is **APPROVED/DENIED**.

ATTEST:

Lance Wetzel, Chairman, Le Sueur County Board of Commissioners.

Darrell Pettis, Le Sueur County Administrator

DATE: _____

FINDINGS OF FACT

WHEREAS, STEVEN HELMSTETTER, KASOTA, MN, (APPLICANT/OWNER): has applied for a Conditional Use Permit to allow grading, excavating, and filling of **1439** cubic yards of material in a Urban/Rural Residential “R1” District. Property is located in the NE 1/4 SW 1/4, Section 9, Kasota Township.

WHEREAS, the Le Sueur County Planning and Zoning Commission held on public hearing on **September 10, 2015**, in order to hear public testimony from the applicants as well as interested parties pertaining to and as provided by the Zoning Ordinance of Le Sueur County.

WHEREAS, the Le Sueur County Planning and Zoning Commission, acting as an advisory board to the Le Sueur County Board of Commissioners recommends **denial/approval** of the application due to the following findings:

1. **The conditional use will not be injurious to the use and enjoyment of other property in the immediate vicinity for the purposes already permitted, nor substantially diminishes and impairs property values within the immediate vicinity.**
2. **The establishment of the conditional use will not impede the normal and orderly development and improvement of surrounding vacant property for uses predominant in the area.**
3. **Adequate utilities, access roads, drainage and other facilities are being provided.**
4. **Adequate measures will be taken to prevent and control offensive odor, fumes, dust, noise and vibration, so that none of these will constitute a nuisance, and to control lighted signs and other lights in such a manner that no disturbance to neighboring properties will result.**

WHEREAS, On September 15, 2015, at their regularly scheduled meeting, the Le Sueur County Board of Commissioners approved/denied the Conditional Use Permit application as requested by the Stevan Helmstetter.

NOW, THEREFORE, IT IS HEREBY RESOLVED, the following Findings of Fact were adopted at the September 15, 2015 Le Sueur County Board meeting in order to protect the public health, safety and general welfare of the citizens of Le Sueur County.

1. **With the imposition of appropriate conditions as stated, the conditional use will not be injurious to the use and enjoyment of other property in the immediate vicinity for the purposes already permitted, nor substantially diminishes and impairs property values within the immediate vicinity.**
2. **With the imposition of appropriate conditions as stated, the establishment of the conditional use will not impede the normal and orderly development and improvement of surrounding vacant property for uses predominant in the area.**
3. **With the imposition of appropriate conditions as stated, adequate utilities, access roads, drainage and other facilities are being provided.**
4. **With the imposition of appropriate conditions as stated, adequate measures will be taken to prevent and control offensive odor, fumes, dust, noise and vibration, so that none of these will constitute a nuisance, and to control lighted signs and other lights in such a manner that no disturbance to neighboring properties will result.**

BE IT FURTHER RESOLVED, by the Le Sueur County Board of Commissioners that based on the above Findings of Fact, a Conditional Use Permit to allow grading, excavating, and filling of **1439** cubic yards of material in an Urban/Rural Residential “R1” District. Property is located in the NE 1/4 SW 1/4, Section 9, Kasota Township, is approved/denied.

ATTEST:

Lance Wetzel, Chairman, Le Sueur County Board of Commissioners.

Darrell Pettis, Le Sueur County Administrator

DATE: _____

FINDINGS OF FACT

WHEREAS, ERIC SOLHEID CONSTRUCTION, NEW PRAGUE, MN, (APPLICANT); JOEL & DEBBIE SOLHEID, NEW PRAGUE, MN, (OWNER): has applied for a Conditional Use Permit to allow grading, excavating, and filling of 330 cubic yards of material outside the shore impact zone in a Special Protection “SP” District, on an un-named stream. Property is located in the W 1/2 NW 1/4, Section 3, Derrynane Township.

WHEREAS, the Le Sueur County Planning and Zoning Commission held on public hearing on **September 10, 2015**, in order to hear public testimony from the applicants as well as interested parties pertaining to and as provided by the Zoning Ordinance of Le Sueur County.

WHEREAS, the Le Sueur County Planning and Zoning Commission, acting as an advisory board to the Le Sueur County Board of Commissioners recommends **denial/approval** of the application due to the following findings:

1. The conditional use will not be injurious to the use and enjoyment of other property in the immediate vicinity for the purposes already permitted, nor substantially diminishes and impairs property values within the immediate vicinity.
2. The establishment of the conditional use will not impede the normal and orderly development and improvement of surrounding vacant property for uses predominant in the area.
3. Adequate utilities, access roads, drainage and other facilities are being provided.
4. Adequate measures will be taken to prevent and control offensive odor, fumes, dust, noise and vibration, so that none of these will constitute a nuisance, and to control lighted signs and other lights in such a manner that no disturbance to neighboring properties will result.

WHEREAS, On September 15, 2015, at their regularly scheduled meeting, the Le Sueur County Board of Commissioners APPROVED/DENIED the Conditional Use Permit application as requested by **ERIC SOLHEID CONSTRUCTION, NEW PRAGUE, MN, (APPLICANT); JOEL & DEBBIE SOLHEID, NEW PRAGUE, MN, (OWNER):**

NOW, THEREFORE, IT IS HEREBY RESOLVED, the following Findings of Fact were adopted at the September 15, 2015 Le Sueur County Board meeting in order to protect the public health, safety and general welfare of the citizens of Le Sueur County.

1. The conditional use will not be injurious to the use and enjoyment of other property in the immediate vicinity for the purposes already permitted, nor substantially diminishes and impairs property values within the immediate vicinity.
2. The establishment of the conditional use will not impede the normal and orderly development and improvement of surrounding vacant property for uses predominant in the area.
3. Adequate utilities, access roads, drainage and other facilities are being provided.
4. Adequate measures will be taken to prevent and control offensive odor, fumes, dust, noise and vibration, so that none of these will constitute a nuisance, and to control lighted signs and other lights in such a manner that no disturbance to neighboring properties will result.

BE IT FURTHER RESOLVED, by the Le Sueur County Board of Commissioners that based on the above Findings of Fact, a Conditional Use Permit to allow grading, excavating, and filling of 330 cubic yards of material outside the shore impact zone in a Special Protection “SP” District, on an un-named stream. Property is located in the W 1/2 NW 1/4, Section 3, Derrynane Township, is APPROVED/DENIED.

ATTEST:

Lance Wetzel, Chairman, Le Sueur County Board of Commissioners.

Darrell Pettis, Le Sueur County Administrator

DATE: _____

LE SUEUR COUNTY PLANNING AND ZONING COMMISSION
88 SOUTH PARK AVE.
LE CENTER, MINNESOTA 56057
September 10, 2015

MEMBERS PRESENT: Don Reak, Don Rynda, Chuck Retka, Shirley Katzenmeyer, Steve Olson, Doug Krenik, Pam Tietz
MEMBERS ABSENT: Betty Bruzek, Al Gehrke, Jeanne Doheny
OTHERS PRESENT: Kathy Brockway, Commissioner Connolly

The meeting was called to order at 7:00 PM by Vice-Chairperson, Steve Olson.

ITEM #1: CHRISTOPHER SEELY, CLEVELAND, MN, (APPLICANT/OWNER): Request that the County grant a Conditional Use Permit to allow grading, excavating, and filling of 500 cubic yards of material outside the shore impact zone in a Special Protection "SP" District, on a Natural Environment "NE" lake, Lake Henry. Property is located in the Government Lot 1, Section 34, Cleveland Township & Government Lot 3, Section 3, Cleveland Township.

Kathy Brockway presented power point presentation. Christopher Seely was present for application.

TOWNSHIP: Notified Cleveland Township per the application process. **DNR:** No comments **LETTERS:** Joshua Mankowski, LSC Resource Specialist (see file)

PUBLIC COMMENT: none

Discussion was held regarding: removal of 150 cubic yards of material and replace with 350 cubic yards of material to change the elevation of the shed site, variance granted in July of 2015 for the placement of the shed, no change in the drainage of the lot, additional screening between the shed and lake per variance approval, required setback from the lake is 250 feet, shed will be 192 feet, gradual slope to the bluff.

Findings by majority roll call vote:

1. *The conditional use will not be injurious to the use and enjoyment of other property in the immediate vicinity for the purposes already permitted, nor substantially diminishes and impairs property values within the immediate vicinity.*
2. *The establishment of the conditional use will not impede the normal and orderly development and improvement of surrounding vacant property for uses predominant in the area.*
3. *Adequate utilities, access roads, drainage and other facilities are being provided.*
4. *Adequate measures will be taken to prevent and control offensive odor, fumes, dust, noise and vibration, so that none of these will constitute a nuisance, and to control lighted signs and other lights in such a manner that no disturbance to neighboring properties will result.*

Motion was made by Doug Krenik to approve the application as presented. Seconded by Don Rynda. Motion approved. Motion carried.

ITEM #2: STEVAN HELMSTETTER, KASOTA, MN, (APPLICANT/OWNER): Request that the County grant a Conditional Use Permit to allow grading, excavating, and filling of 1439 cubic yards of material in an Urban/Rural Residential "R1" District. Property is located in the NE 1/4 SW 1/4, Section 9, Kasota Township.

Kathy Brockway presented power point presentation. Stevan Helmstetter was present for application.

TOWNSHIP: Notified Joe Kienlen, Kasota Township Board member during the application process. **DNR:** No comments. **LETTERS:** Joshua Mankowski, LSC Resource Specialist (see file)

PUBLIC COMMENT: none

Discussion was held regarding: Erosion control measures, time frame for the project from start to finish, approximately 3 days, depending on weather, placement of piping within the bluff, existing pathway within the bluff, no maintenance required, concerns with vegetation cover this late in the season, line connecting the bed to the home will be approximately 3 feet wide trench, 6 feet deep through the bluff, geothermal heats and cools, K & K Plumbing of St. Peter will do the installation.

Findings by majority roll call vote:

1. *The conditional use will not be injurious to the use and enjoyment of other property in the immediate vicinity for the purposes already permitted, nor substantially diminishes and impairs property values within the immediate vicinity.*
2. *The establishment of the conditional use will not impede the normal and orderly development and*

- improvement of surrounding vacant property for uses predominant in the area.*
3. *Adequate utilities, access roads, drainage and other facilities are being provided.*
 4. *Adequate measures will be taken to prevent and control offensive odor, fumes, dust, noise and vibration, so that none of these will constitute a nuisance, and to control lighted signs and other lights in such a manner that no disturbance to neighboring properties will result.*

Motion was made by Don Reak to approve the application with the conditions;

1. *Work in the bluff should be restricted to remain within the driving path that has been used to access the lowland area*
2. *The trench must be filled in immediately once the pipes have been installed.*
3. *The disturbed soils within the trench should be compacted to reduce the chances of washout.*
4. *Silt fence needs to be correctly installed (staked and keyed into the ground) to protect the wetland and sloped areas should be covered with erosion control blanket.*
5. *Once work is done, the entire area should be seeded with native vegetation to stabilize the area and reduce colonization from noxious weeds.*
6. *Special attention should be payed to the weather forecast to reduce the chance of washout while work is done within the bluff.*

Seconded by Chuck Retka. Motion approved. Motion carried.

ITEM #3: ERIC SOLHEID CONSTRUCTION, NEW PRAGUE, MN, (APPLICANT); JOEL & DEBBIE SOLHEID, NEW PRAGUE, MN, (OWNER): Request that the County grant a Conditional Use Permit to allow grading, excavating, and filling of 330 cubic yards of material outside the shore impact zone in a Special Protection "SP" District, on an un-named stream. Property is located in the W 1/2 NW 1/4, Section 3, Derrynane Township.

Kathy Brockway presented power point presentation. Eric Solheid was present for application.

TOWNSHIP: Notified Derrynane Township board member per the application process. **DNR:** No comments
LETTERS: Joshua Mankowski, LSC Resource Specialist (see file)

PUBLIC COMMENT: none

Discussion was held regarding: removing existing shed and replacing with a new shed, change elevation in order to meet the Regulatory Flood Protection Elevation, improvement on property, storage shed.

Findings by majority roll call vote:

1. *The conditional use will not be injurious to the use and enjoyment of other property in the immediate vicinity for the purposes already permitted, nor substantially diminishes and impairs property values within the immediate vicinity.*
2. *The establishment of the conditional use will not impede the normal and orderly development and improvement of surrounding vacant property for uses predominant in the area.*
3. *Adequate utilities, access roads, drainage and other facilities are being provided.*
4. *Adequate measures have been to prevent and control offensive odor, fumes, dust, noise and vibration, so that none of these will constitute a nuisance, and to control lighted signs and other lights in such a manner that no disturbance to neighboring properties will result.*

Motion was made by Pam Tietz to approve the application as presented. Seconded by Don Rynda. Motion approved. Motion carried.

Motion was made by Don Reak to approve the minutes from the August 13, 2015 meeting by Seconded by Shirley Katzenmeyer. Motion approved. Motion carried.

Motion to adjourn meeting by Chuck Retka. Seconded by Don Reak. Motion approved. Motion carried.
Meeting Adjourned.

Shirley Katzenmeyer
Kathy Brockway
Respectfully submitted,

Tape of meeting is on file in the Le Sueur County Environmental Services Office



Le Sueur County, MN

Tuesday, September 15, 2015

Board Meeting

Item 11

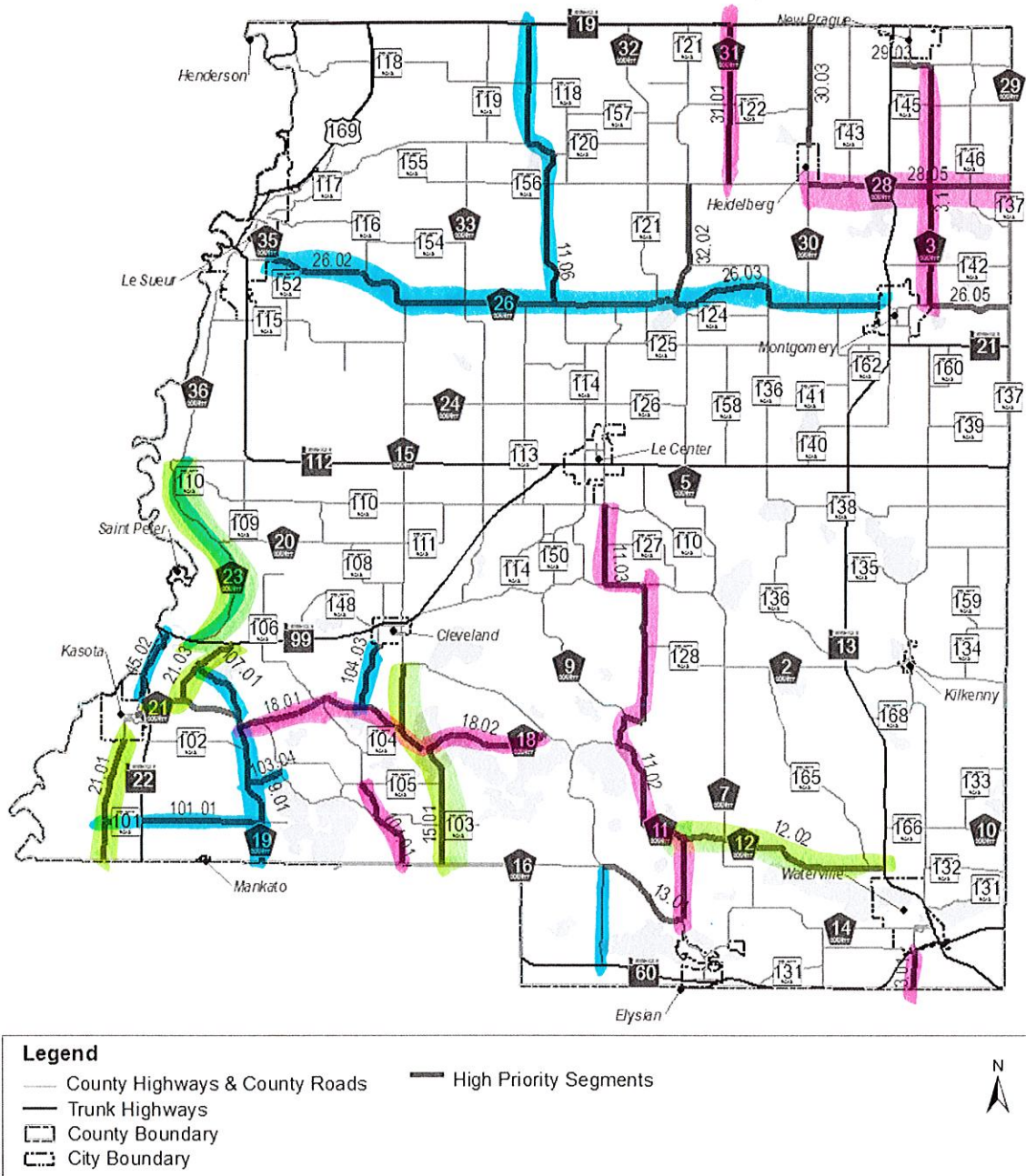
11:15 am Darrell Pettis, Administrator

RE: HSIP Projects

RE: Library Budget




RE: Nicollet County Grand Opening Invite

Staff Contact:



Source: CRSP Safety Analysis, 2012

Figure 3-8
Le Sueur County High Priority Segment Map

 RUMBLE STRIPE
 RUMBLE STRIP
 & RUMBLE



BUDGET NARRATIVE

Income:

The budget includes a 5% increase to counties and just under a 10% increase in other income, based on this year's and last year's actual numbers.

Salaries:

Jeanne will be retiring in December. She works 20 hours a week in the Technical Services department. Margo currently works 30 hours with Jeanne doing tech services work as well as processing our courier and working the desk (15 hrs/desk).

I propose promoting Margo to Tech Services Coordinator, increasing her hours to full-time with benefits, and reducing her desk hours to 12. Erica and Elizabeth will pick up extra hours to handle her desk and courier hours. Jessica will pick up some of the courier hours within her current work hours. This would mean Waseca would not add any additional hours, but it would cost **\$11,600** in benefits to make Margo full time.

Montgomery's long-time volunteer shelver will be dropping her volunteer hours next year. I propose hiring a page to work one weekend shift (3 hours) a week to help with their shelving needs. This would cost approximately **\$1400** a year.

Le Sueur and Montgomery staff are working large amounts of overtime. I would like to give staff some additional hours off desk to work. I'm proposing 2 hours a week off desk for Dianne at a cost of **\$1200** and 2 hours a week off desk for Nancy at a cost of **\$1600**.

Elysian: To help ease the transition of hours reduction in Elysian and to meet the summer demand for wifi access, internet use, and summer readers, we would increase summer hours in Elysian by 5 hours per week. This would add 65 hours during the summer reading program and popular lake months. This would cost approximately **\$750**.

Minimum Wage: The new state minimum wage has increased our Level 1 steps.

Utilities:

Our phone bill this year is coming in above budget. This budget reflects this increase at a cost of **\$600**.

Furniture and Equipment:

We would purchase 7 computers to replace oldest staff and public computers system-wide (**\$5250**) and 2 laptops to replace Janesville's borrowed XP laptops (**\$2200**). For a total of **\$7,450**.

Programming:

We would increase the programming budget due to a large reduction in Arts and Cultural Heritage Fund grant dollars for Traverse des Sioux Library Cooperative at an increase of **\$2,726**.

Misc:

Staff were asked to use fake money to help set priorities for 2016. This year they prioritized money for holiday/library displays. If each library received \$100, this would result in a cost of **\$900**.

FYI: the top 5 also included

2. More Audiobooks/CDs
3. Endcap Displays (furniture)
4. More teen programming
5. More staff hrs for TLS/TLM

TdS Service Fees:

Our weeding effort paid off to save us \$3272 per year despite a 3.5% increase to TdS libraries.

NOT INCLUDED IN BUDGET:**Postage:**

I would like to experiment with sending out letters for ILL notification instead of calling patrons without email addresses. I'm not sure what the cost would be. We would try this out at Waseca and see how much less time and how much money it would take. I'm estimating **\$1300**.

Story Time/SRP Materials/Kids Programming:

We would like to have more money to spend on small programs and supplies throughout the year. Right now our budget really limits us on purchasing incentive prizes so we spend almost all of our budget on prizes and then do very little afterschool and weekend programming for kids through the rest of the year, with the exception of Waseca, Le Sueur, and Janesville, which receives a lot of support from their Friends groups. This would cost **\$2000**.

Furniture and Equipment:

We would purchase 6 laptops for Waseca laptop lab (**\$6600**).

Materials:

We would like to continue to expand our large print/adult nonfiction (**\$4000**) and audiobook collections (**\$500**). Our large print and audiobook collections are too small for the size of our communities, especially with all the commuters living here as well as needing to prepare for a demographic shift. Our nonfiction needs serious updating (**\$2000**).

REVENUE	2013 Actual	2014 Actual	2014 Budget	2015 Budget	2016 Budget	2016 +/-
City of Waseca	171,362	-	-			
Le Sueur County	302,975	441,180	455,696	514,936	540,697	5.00%
Waseca County	236,370	332,804	345,506	390,422	409,895	4.99%
TOTAL GOVERNMENT REVENUE	710,707	773,985	801,202	905,358	950,592	5.00%
Interest	440	1,946	140	140	1,500	971.43%
Copiers	8,565	7,616	7,000	7,000	9,000	28.57%
Memorials & Gifts	193	231				#DIV/0!
Fax Income	1,813	1,594	1,600	1,600	1,700	6.25%
Lost/Damaged Materials	1,578	1,051	1,100	1,100	1,100	0.00%
Fines	9,390	7,496	8,400	8,400	7,200	-14.29%
Book Sales	2,701	2,937	3,300	3,300	3,300	0.00%
Misc	11,698	2,054	1,200	1,200	1,200	0.00%
TOTAL OTHER INCOME	36,378	24,925	22,740	22,740	25,000	9.94%
Donations	15,621	13,134	0	-	-	-
Grants	1,436	50,801	0	-	-	-
TOTAL DONATIONS/GRANTS	17,057	63,935	-	-	-	-
Reserves						
TOTAL REVENUE	764,142	862,845	823,942	928,098	975,592	5.12%
EXPENSES						
ADMINISTRATION						
Salaries	438,119	469,291	476,017	511,852	554,283	8.29%
Payroll Taxes	32,767	34,927	32,754	40,000	43,640	9.10%
PERA	30,144	32,065	31,233	39,041	38,190	-2.18%
Health Insurance	37,549	31,584	37,676	44,232	53,500	20.95%
Auditor Fees	3,095	3,420	2,950	3,600	3,950	9.72%
Sales Tax	594	668	725	925	925	0.00%
Accounting Services	18,000	18,000	18,000	18,000	18,000	0.00%
Utilities	18,783	1,023	-	1,000	1,600	60.00%
Custodian Services	9,480	-	-	-	-	-
HQ Maint & Repairs	3,172	-	-	-	-	-
Lease Agreement		21,600	21,600	21,600	21,600	0.00%
TOTAL ADMIN EXPENSES	591,703	612,579	620,955	680,250	735,688	8.15%
SERVICE COSTS						
Office and Library Supplies	8,862	9,945	8,250	11,000	10,900	-0.91%
Postage	3,174	3,395	3,600	3,700	3,500	-5.41%
Travel and Training	972	2,002	1,500	4,000	3,500	-12.50%
Insurance	6,232	8,337	8,300	8,500	8,600	1.18%
Advertising/Public Relations	789	6,235	400	6,850	2,000	-70.80%
Story Time/SRP Materials	5,485	4,435	6,000	8,000	8,000	0.00%
Programming		-	-	2,000	4,726	136.30%
Furniture/Equipment	8,529	16,868	8,500	18,598	16,450	-11.55%
Misc	-	196	18,876	800	1,100	37.50%
TOTAL	34,043	51,413	55,426	63,448	58,776	-7.36%
MATERIALS						
Books	46,631	57,830	60,000	80,979	80,979	0.00%
Periodicals	2,972	3,236	3,500	7,000	7,000	0.00%
Audio and Music CDs	3,495	3,776	4,000	9,000	9,000	0.00%
DVDs	3,347	5,501	3,000	8,000	8,000	0.00%
Ebooks/E-audio	6,000	6,000	6,000	7,000	7,000	0.00%
TOTAL	62,445	76,342	76,500	111,979	111,979	0.00%
TdS SERVICES						
TdS Service Fees	66,051	63,850	69,021	71,421	68,149	-4.58%
Supplies/Misc	782	644	2,000	1,000	1,000	0.00%
TOTAL TdS Expenses	66,833	64,495	71,021	72,421	69,149	-4.52%
TOTAL	755,024	804,829	823,902	928,098	975,592	5.12%

Please Join Us in Celebrating the Ribbon Cutting
and Grand Opening of the
Nicollet County Health and Human Services Building
622 S. Front Street, St. Peter



Date: Tuesday, October 13, 2015

Ribbon Cutting: 1 p.m.

Open House: 1 p.m. – 7 p.m.



Le Sueur County, MN

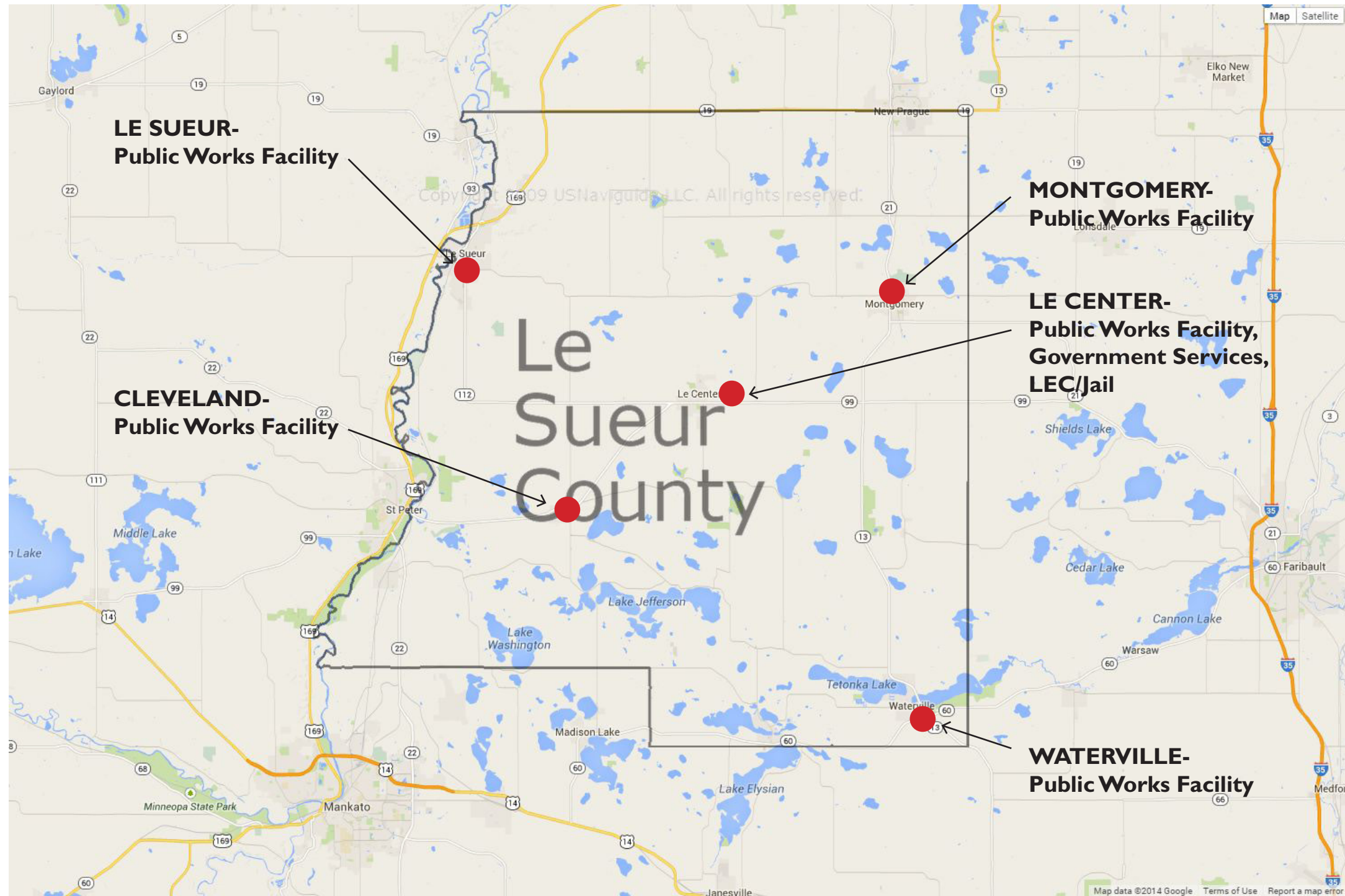
Tuesday, September 15, 2015

Board Meeting

Item 12

11:00 am BKV Work Session following Board Meeting

Staff Contact:



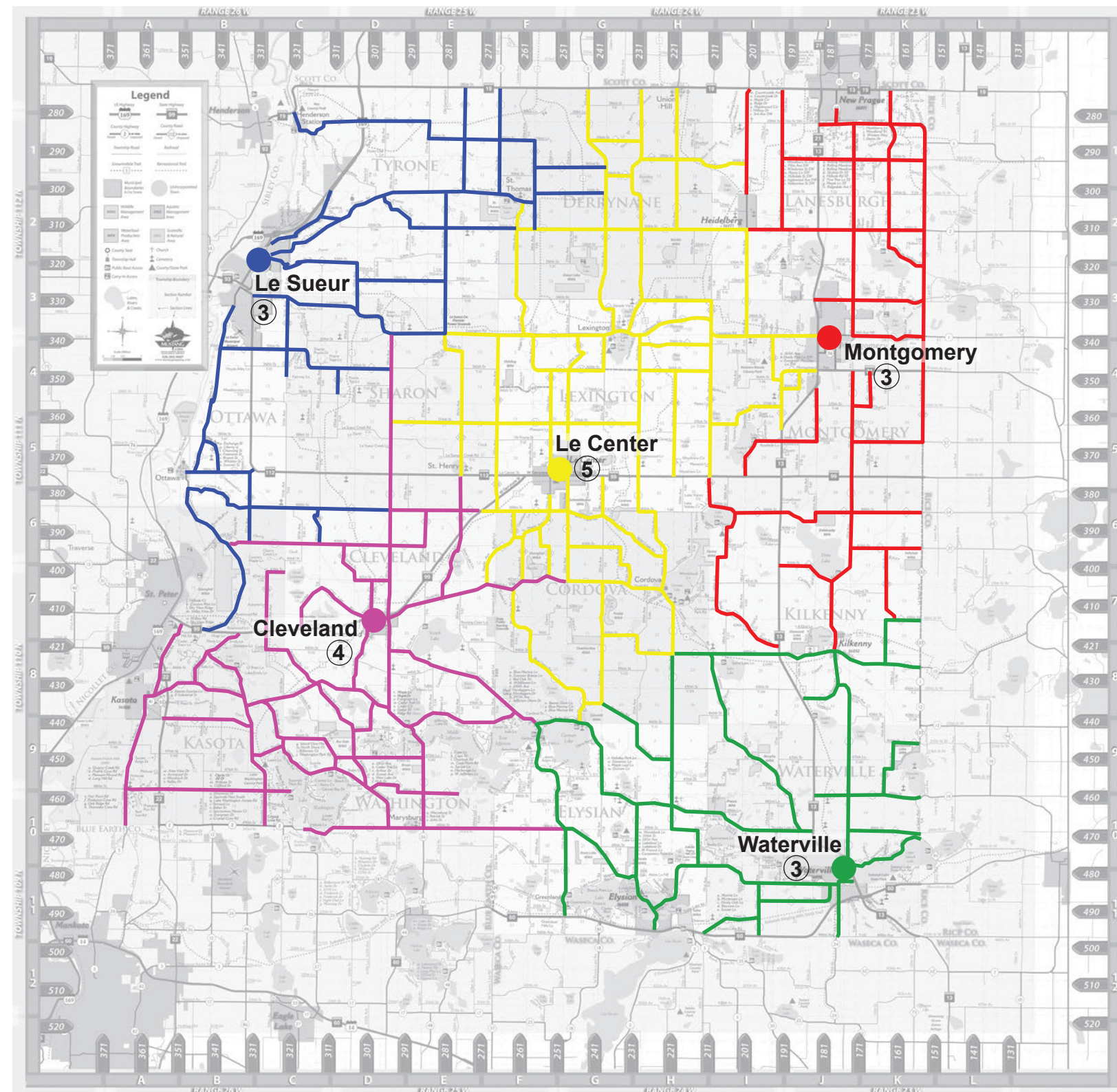
Le Sueur County

Facilities Study

09/15/2015 Project #: 1136.11

Facility Master Plan Study

BKV
GROUP



Le Sueur County

Facilities Study

09/15/2015 Project #: 1136.11

Facility Master Plan Study Public Works- Plow Routes

BKV
GROUP

2

Central vs. Decentral

Pros:

1. Simpler management- staff reporting to a single place
2. Better opportunity to share/shed work
3. Better opportunity to share vehicles/equipment
4. Elimination of duplicative buildings and site areas

Cons:

1. Cost of windshield time from central location to work zones
2. Lost productivity with increased drive times
3. Doesn't eliminate a building and site duplicity

Le Sueur Shop vs. Le Sueur activities from Le Center Shop

Pros:

1. Eliminates some building and site duplicity- e.g wash building
2. Maintenance can be completed at main shop

Cons:

1. Increased operating cost associated with windshield time
2. Lost productivity due to travel times from Le Center to start of work
3. Some buildings and equipment would still be necessary in Le Sueur- e.g. salt storage, fueling. If those were all relocated to Le Center, the operating costs associated with a snow event would increase significantly
4. The building at Le Center would need to be enlarged to accommodate the relocated fleet

Assumptions:

1. Employee cost with benefits of \$70,000/ year (\$33.65/ hr. based on 2,080 hrs. per year)
2. 6 MPG for diesel plows
3. Distance from Le Center to Le Sueur- 14 miles one way, 28 RT, assume 45 minutes total drive time
4. Average winter events requiring plowing, salt and sanding is 40 per year
5. Average cost of diesel fuel = \$2.75 per gallon
6. Plow routes for Le Sueur - 3, required 3 operators

Lost Operational Staff Efficiency:

Drive time to service area from Le Center - 3 staff x 40 days / year x 45 minutes RT x twice a day = 10,800 minutes / yr. or 180 hrs. / year

Operation Staff Cost Impact:

180 hrs. x \$33.65 = \$6,057 / year

Operation Vehicle Impact:

40 events x 3 operators x (2 x 28 miles (RT)) = 6,720 miles /
6 MPG = 1,120 gallons x \$2.75 / gallon = \$3,080 / year

Total Operations and Cost Impact based on Winter Events:

Staff Inefficiency = 180 travel hours

Staff & Vehicle Cost = \$9,137 / year

This analysis is a fraction of the public works services.

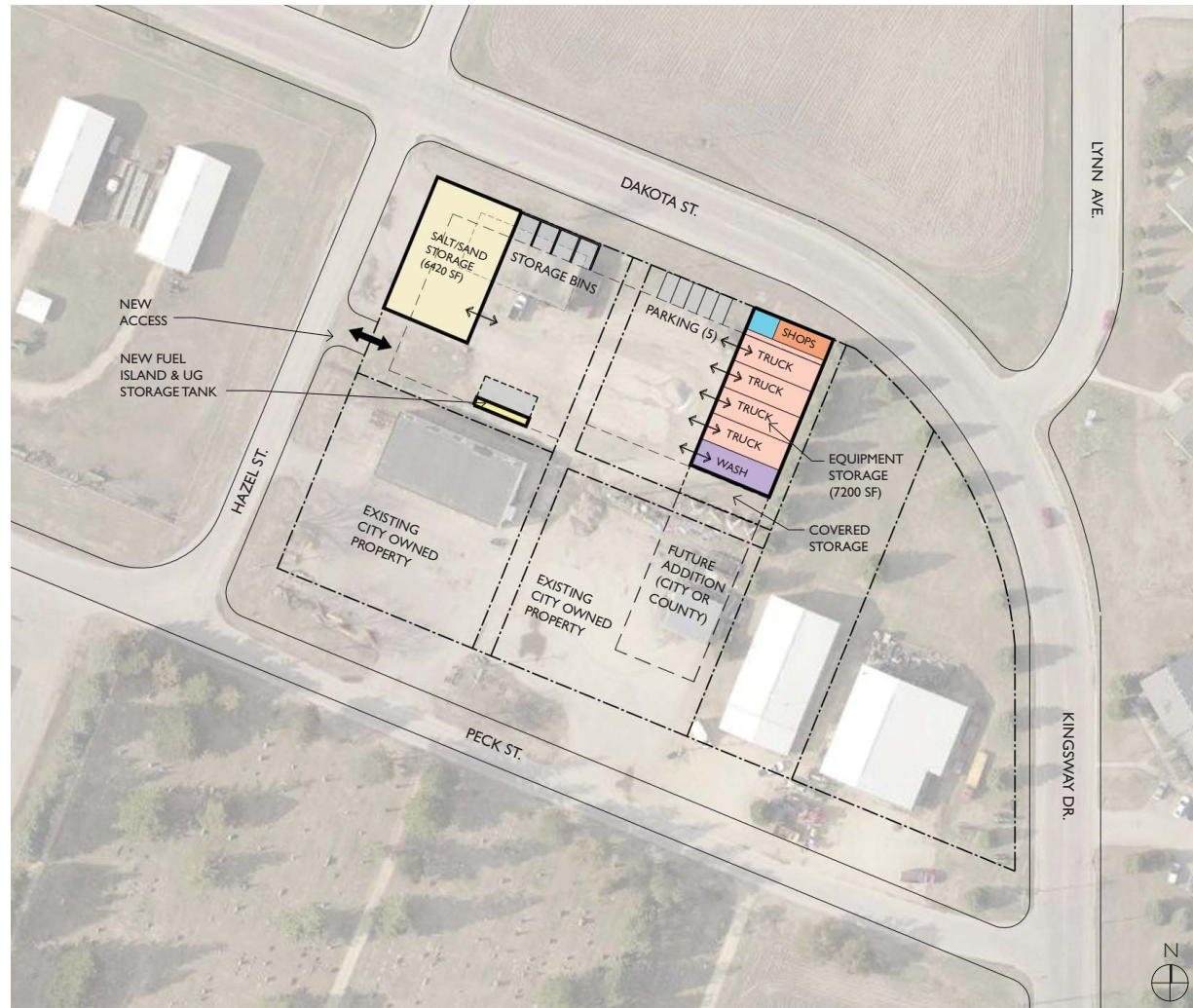
The services the highway shops provide for the 507 miles of road include:

- Snow and Ice plowing and treatment
- Maintain 193 miles of gravel roads
- Signage repair and replacement
- Mowing & weed control
- Asphalt patching & sealing
- Roadway & earthwork
- Highway striping

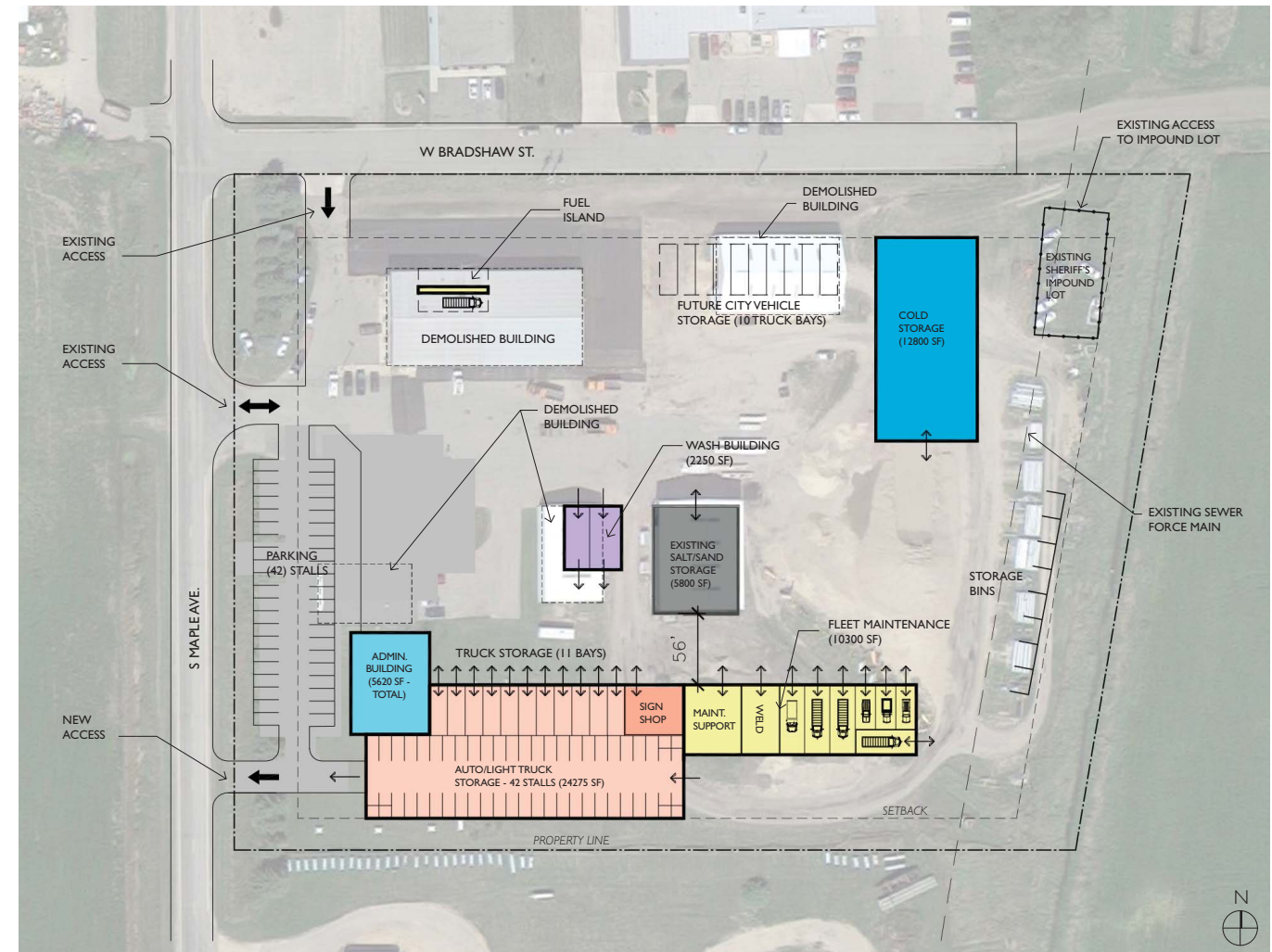
Estimated Total Yearly Operations Impact based on 260 workdays:

Staff Efficiency / Year = 540 hrs. of lost productivity

Lost Staff & Vehicle Operational Cost / Year = \$27,411



- BUILDING LEGEND**
- ADMINISTRATION
 - SHOPS
 - WASH BUILDING
 - FLEET STORAGE
 - SALT/SAND STORAGE



- BUILDING LEGEND**
- COLD STORAGE
 - FLEET MAINTENANCE
 - ADMINISTRATION
 - SHOPS
 - WASH BUILDING
 - FLEET STORAGE
 - EXISTING BUILDING (PROGRAM AS NOTED)

Le Sueur Public Works-

Construction Cost	\$2,400,000
Soft Cost	\$ 400,000

Total Estimated Cost \$2,800,000

*CONSTRUCTION COST BASED ON 2016 ESTIMATE

Le Center Public Works-

Construction Cost	\$9,300,000
Soft Cost	\$1,355,600

Total Estimated Cost \$10,655,600

*CONSTRUCTION COST BASED ON 2016 ESTIMATE

Le Sueur County

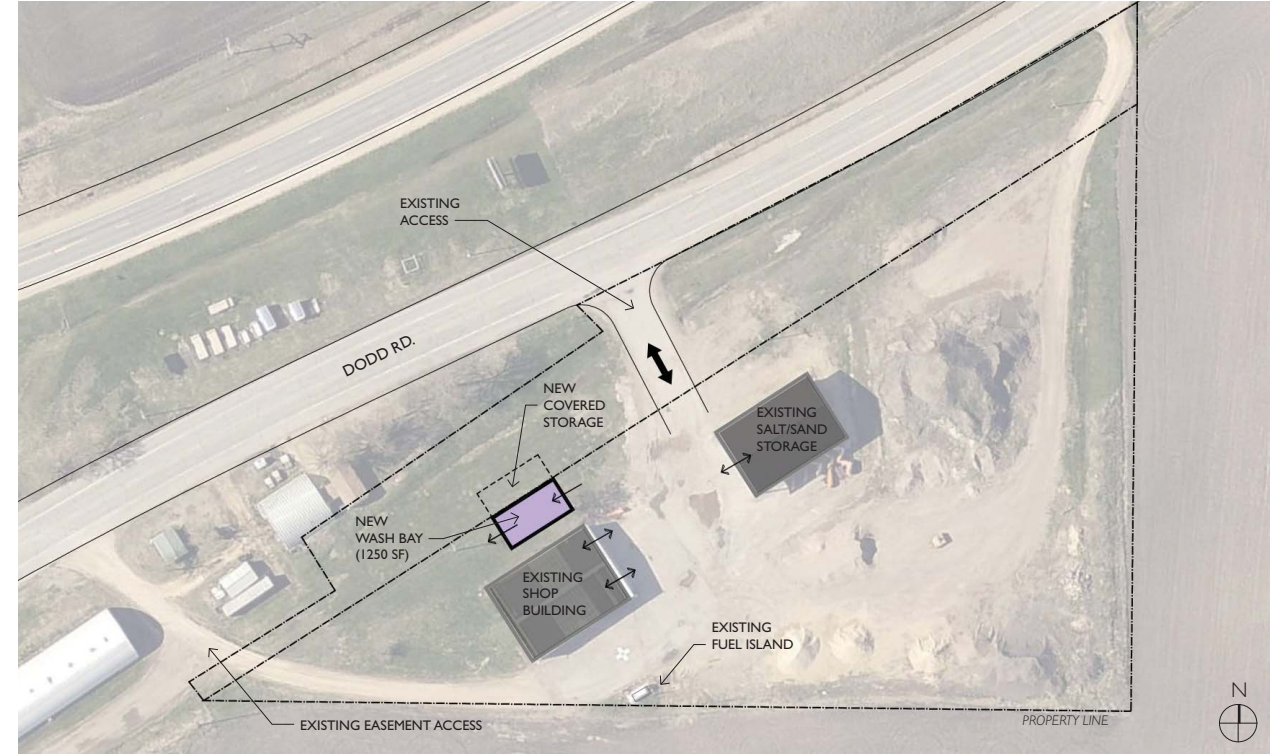
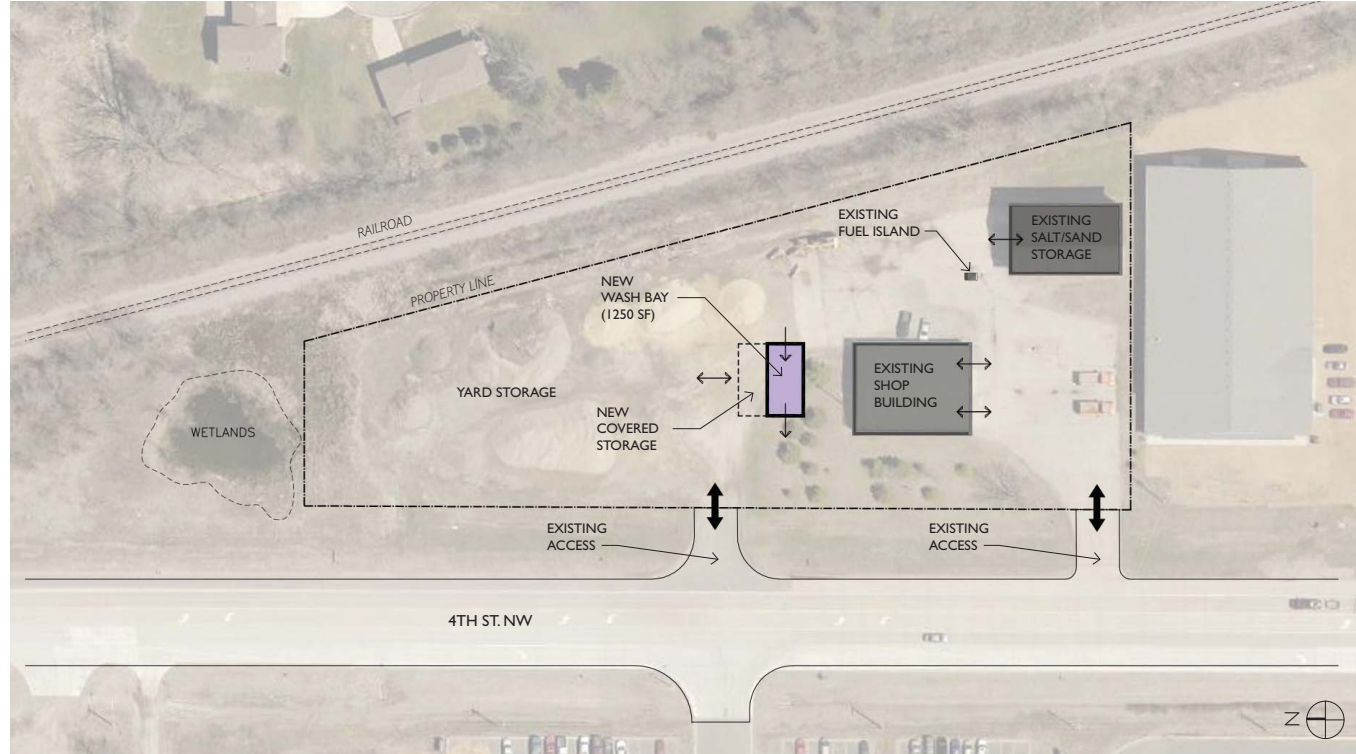
Facilities Study

09/15/2015 Project #: 1136.11

Facility Master Plan Study Recommendations- Public Works

BKV
GROUP

4



Montgomery Public Works Site-

Construction Cost	\$150,000
Soft Cost	\$ 25,000

Total Estimated Cost \$175,000

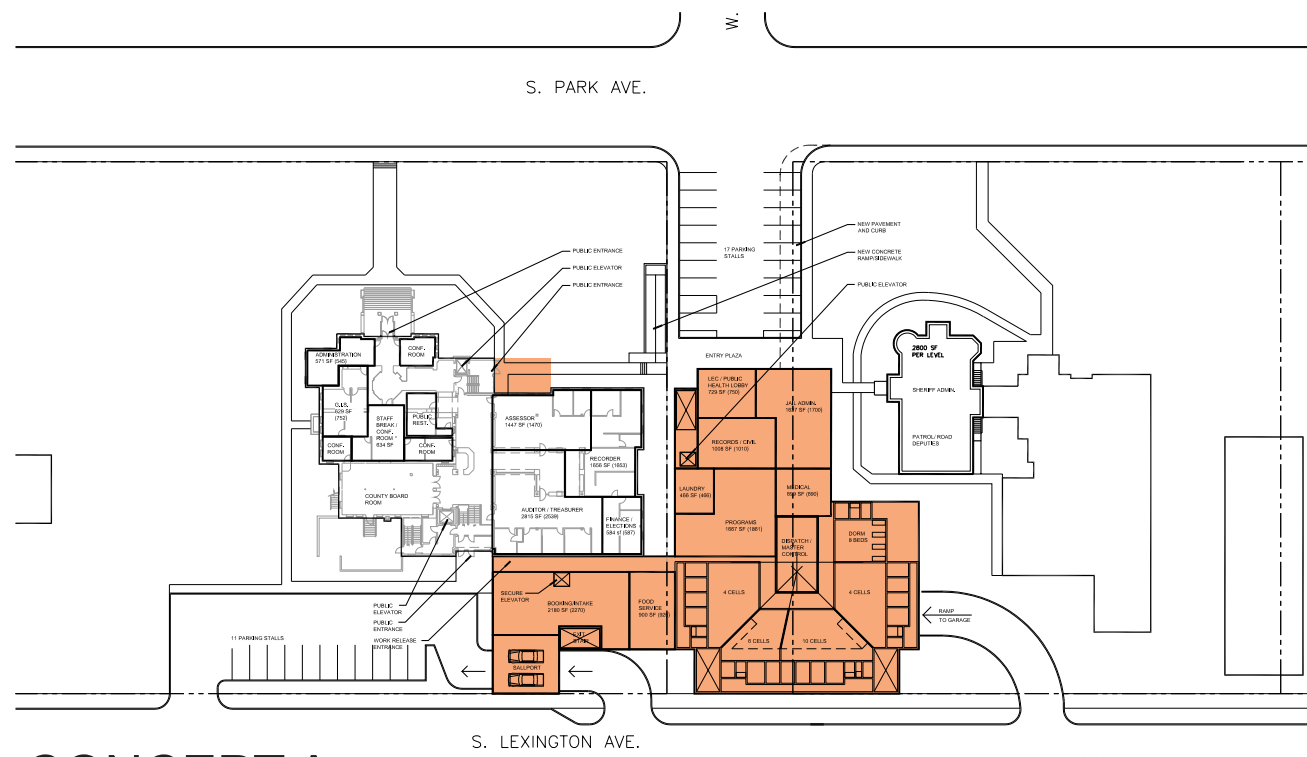
*CONSTRUCTION COST BASED ON 2016 ESTIMATE

Cleveland Public Works Site-

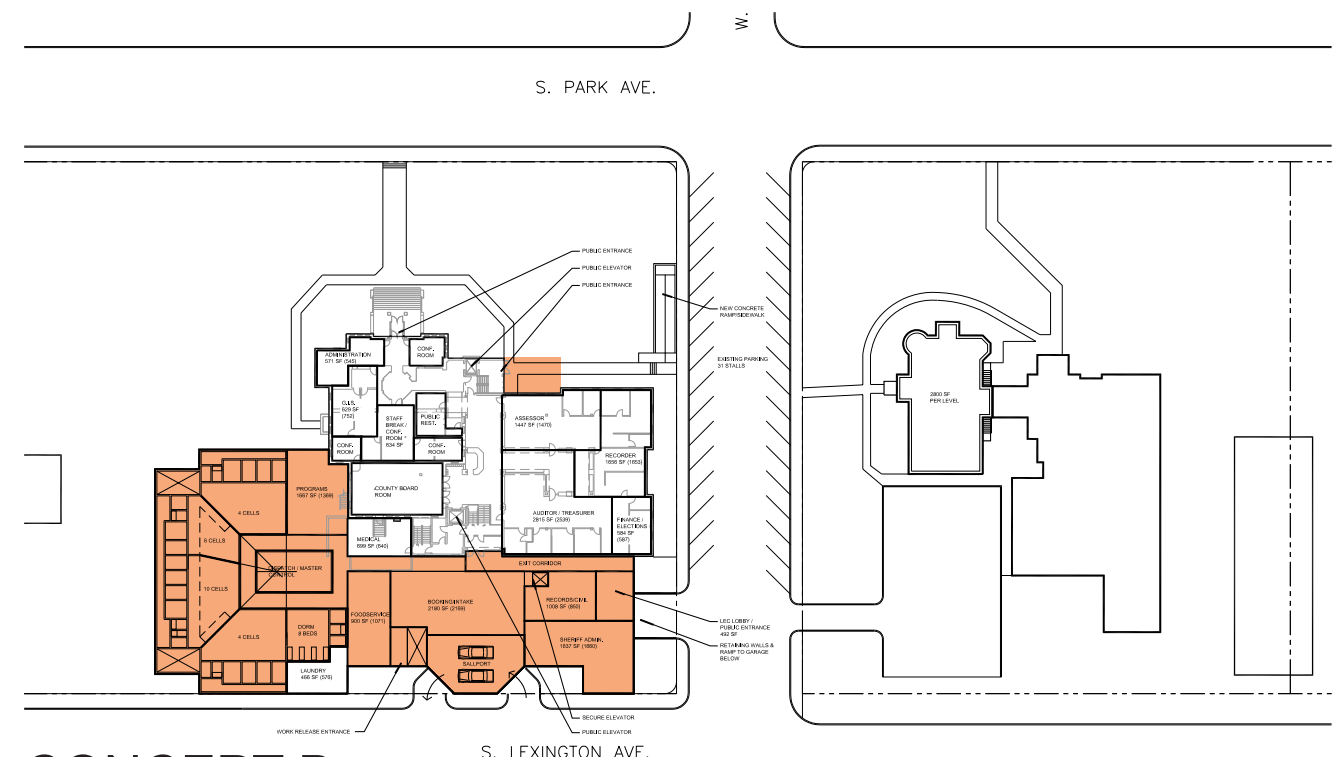
Construction Cost	\$150,000
Soft Cost	\$ 25,000

Total Estimated Cost \$175,000

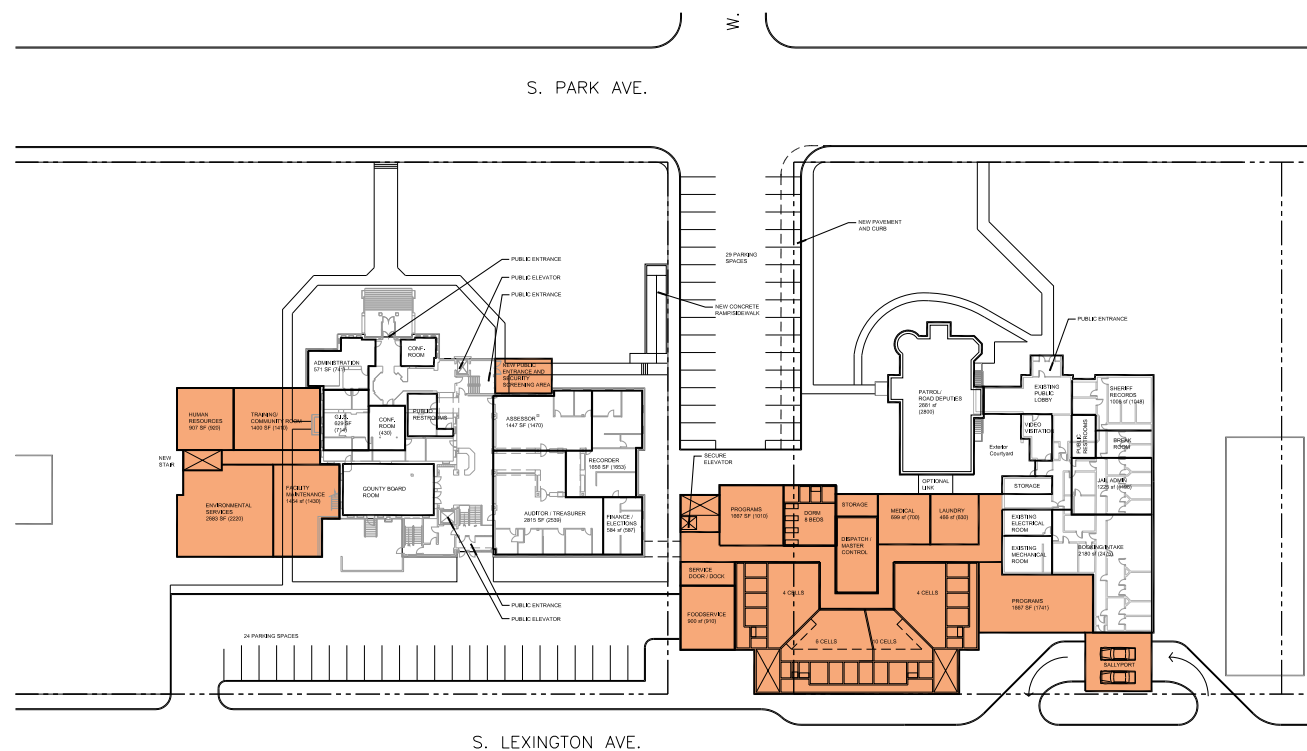
*CONSTRUCTION COST BASED ON 2016 ESTIMATE



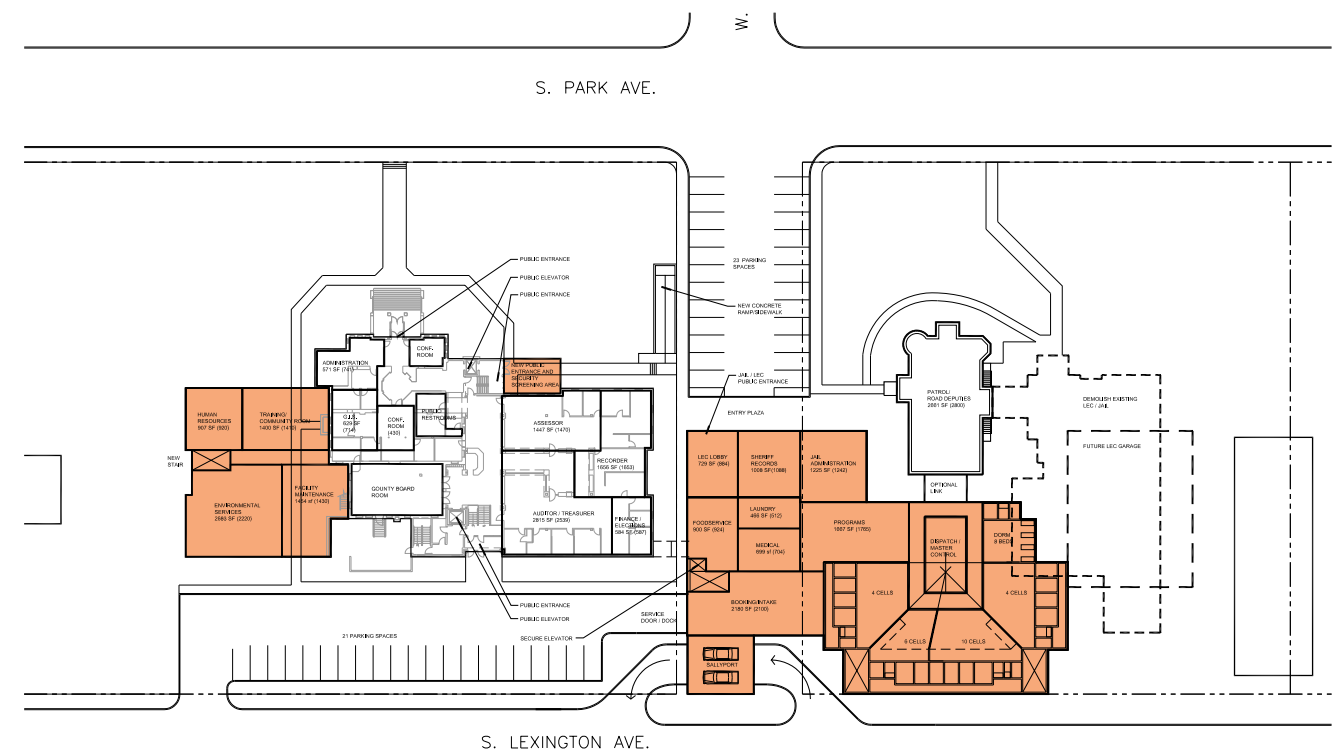
CONCEPT A



CONCEPT B



CONCEPT C



CONCEPT D

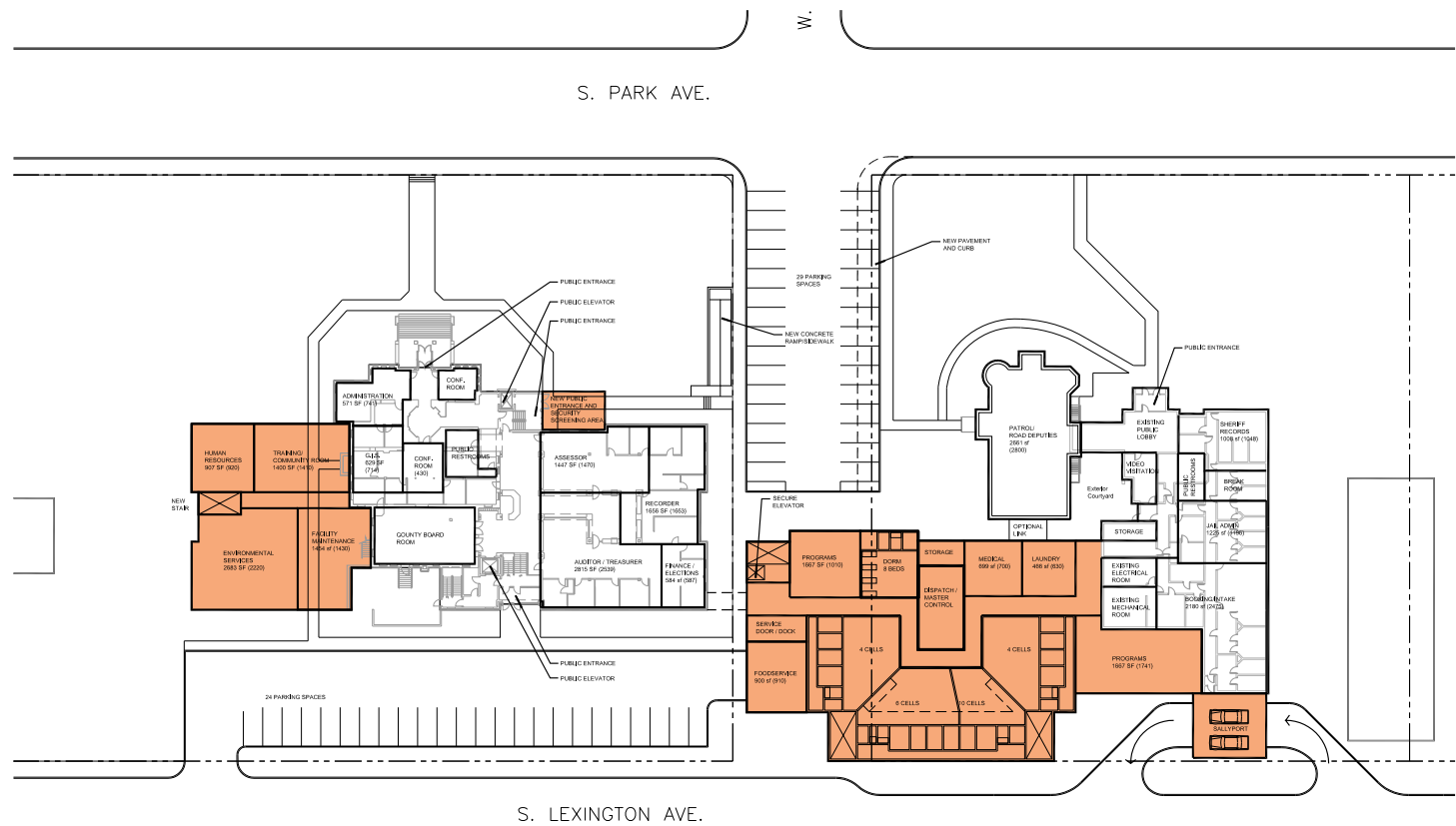
Le Sueur County

Facilities Study

09/15/2015 Project #: 1136.11

Facility Master Plan Study Government Services/ LEC/ Jail

BKV
GROUP



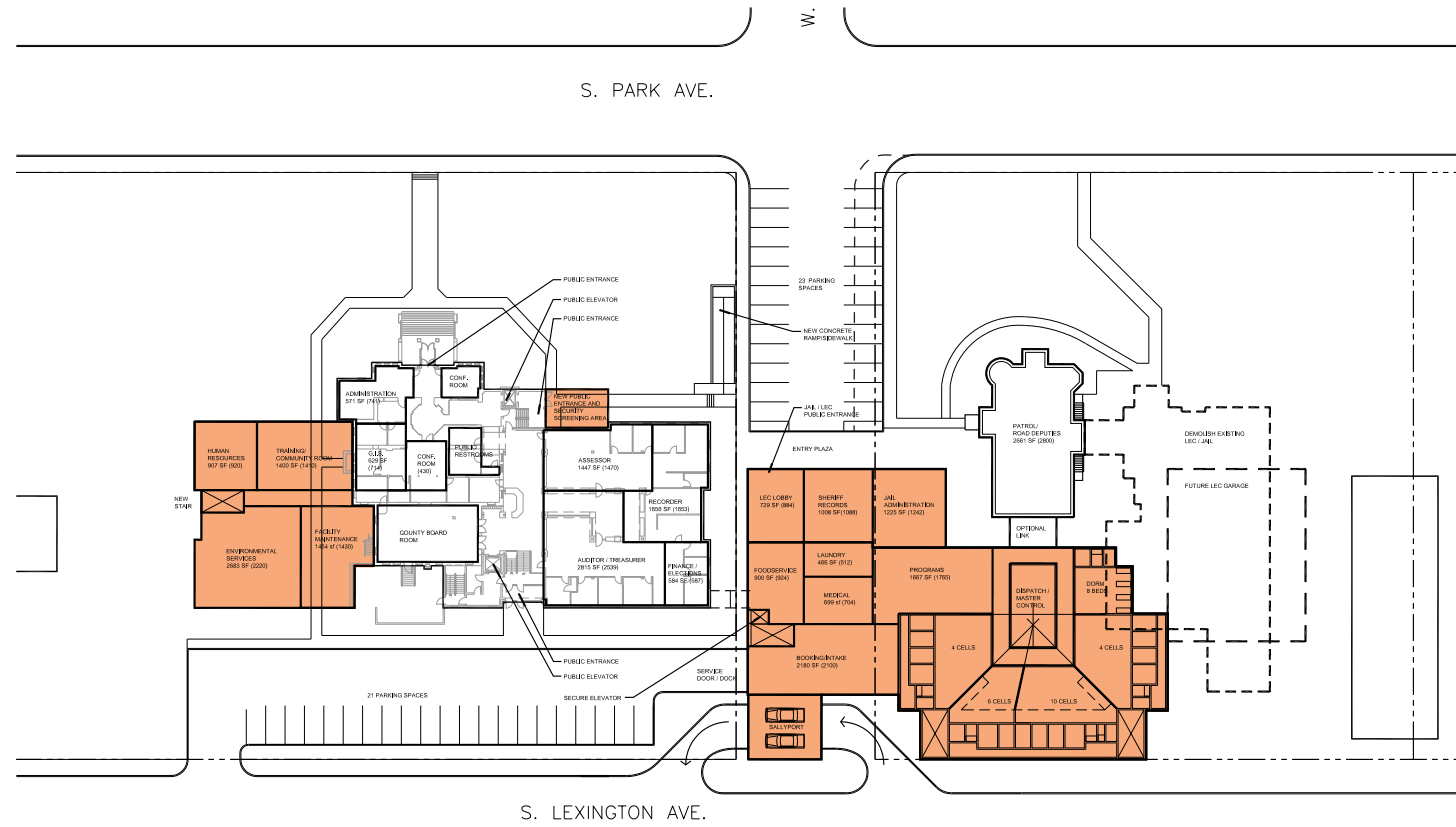
CONCEPT C

Concept C (LEC/JAIL) - NOT RECOMMENDED

Construction Cost	\$10,376,000
Soft Cost	\$ 1,705,000

Total Estimated Cost	\$12,081,000
----------------------	--------------

*NOTE: DOES NOT INCLUDE LEC GARAGE
*CONSTRUCTION COST BASED ON 2016 ESTIMATE



CONCEPT D

Concept D (LEC/JAIL) - RECOMMENDED

Construction Cost	\$9,400,000
Soft Cost	\$1,562,000

Total Estimated Cost	\$10,962,000
----------------------	--------------

*NOTE: DOES NOT INCLUDE LEC GARAGE
*CONSTRUCTION COST BASED ON 2016 ESTIMATE

Le Sueur County

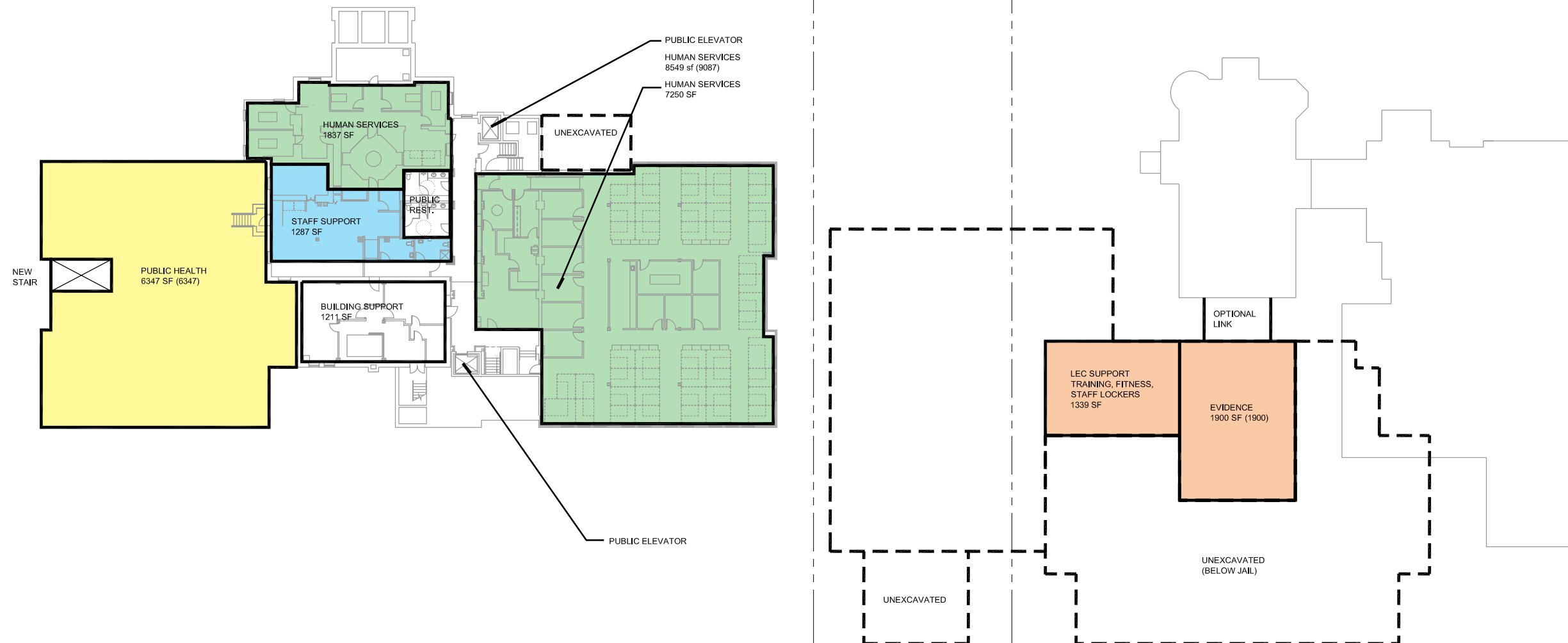
Facilities Study

09/15/2015 Project #: 1136.11

Facility Master Plan Study Recommendation- Jail/ LEC

BKV
GROUP

7



Government Center Addition-

Construction Cost	\$6,900,000
Soft Cost	\$1,000,000

Total Estimated Cost \$7,900,000

*NOTE: DOES NOT INCLUDE HUMAN SERVICES REMODELING

Lower Level

Le Sueur County

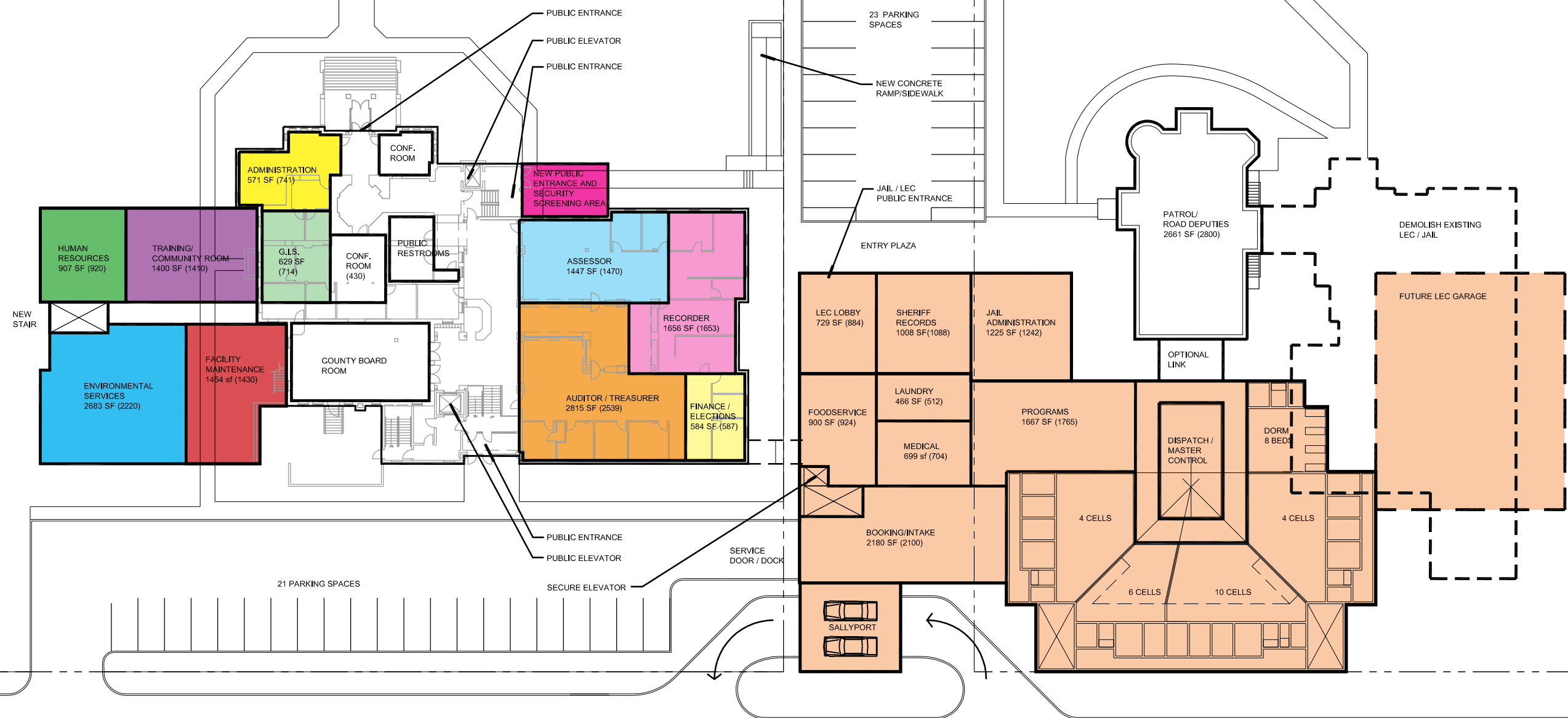
Facilities Study

09/15/2015 Project #: 1136.11

Facility Master Plan Study Government Services/ LEC/ Jail Recommended Concept

BKV
GROUP

8



S. LEXINGTON AVE.

First Level

Le Sueur County

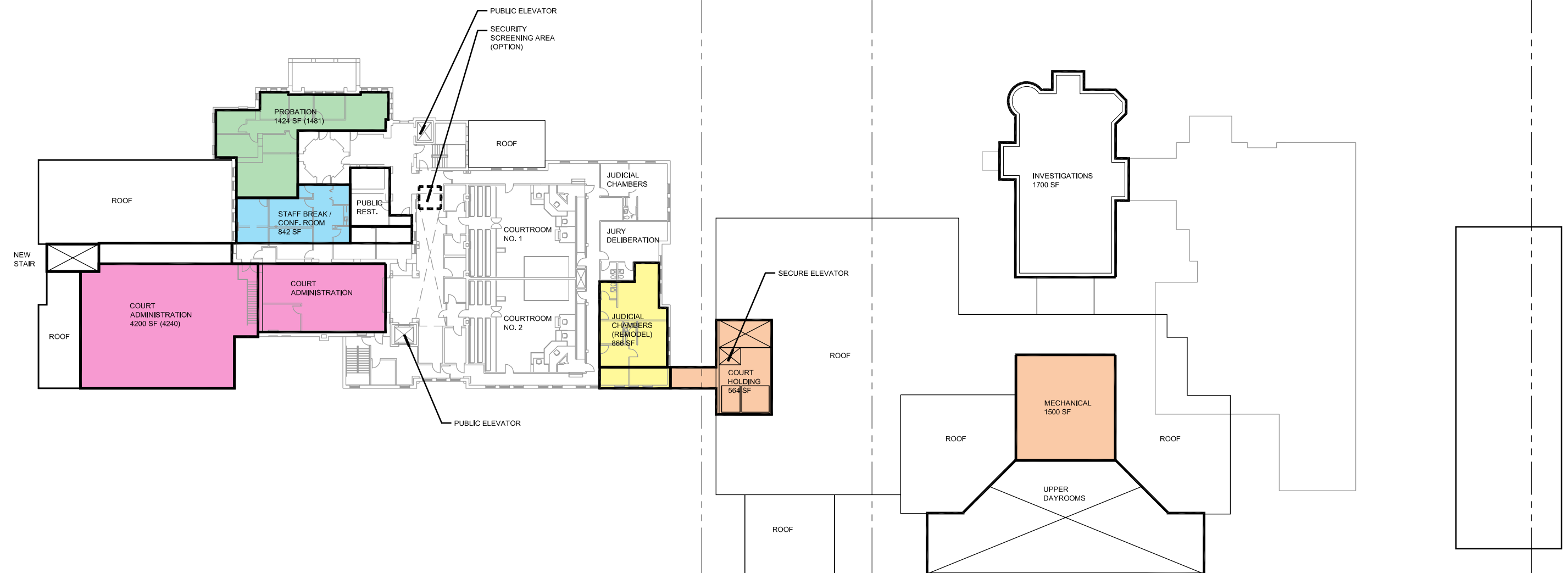
Facilities Study

09/15/2015 Project #: 1136.11

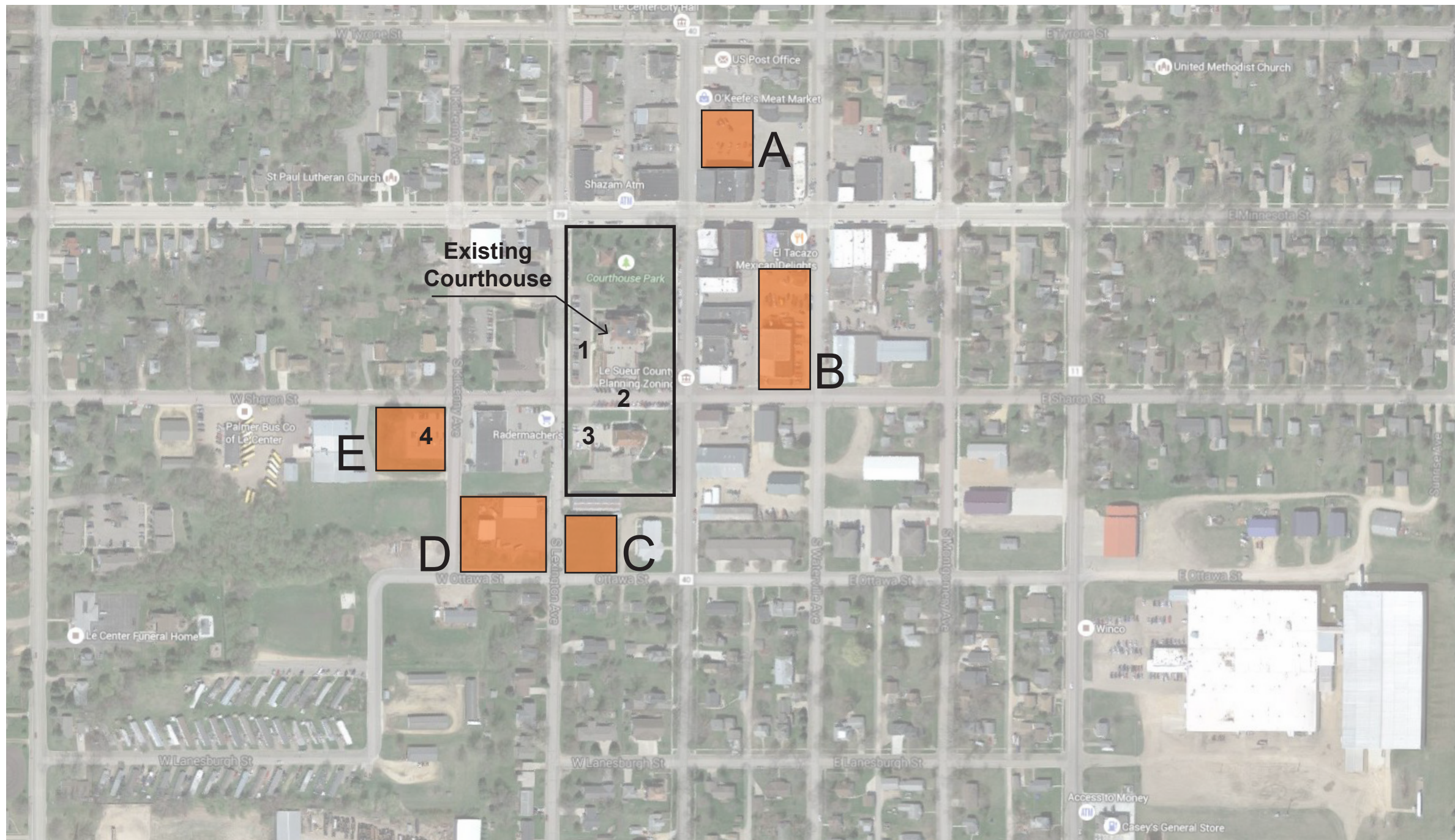
Facility Master Plan Study Government Services/ LEC/ Jail Recommended Concept

BKV
GROUP

9



Second Level



A: City Public Parking Lot
33 cars

B: Private Property
107 cars

C: Church Property
58 cars

D: City Property
105 cars

E: County Property
81 cars

*Existing Courthouse Property- 76 cars

Current Off Street County Parking

- 1- 24 spaces in the west lot
- 2- 38 spaces in East Sharon Street
- 3- Approx. 14 spaces in the LEC lot
- 4- 33 spaces off West Sharon

Total Current Parking = 109

Long Range Additional Parking Impacts

- Moving environmental services to the County Government campus
- Increase of employees over time (in 15 years there could be 198 total employees for the 17 departments at the government center and 40 at the LEC for a total of 238)
- New Jail / LEC construction in East Sharon Street

Potential Off Street Parking Need

150 to 200 (not including LEC)

Le Sueur County

Facilities Study

09/15/2015 Project #: 1136.11

Facility Master Plan Study Parking Analysis

BKV
GROUP

12



Le Sueur County, MN

Tuesday, September 15, 2015

Board Meeting

Item 13

Future Meetings

Staff Contact:

Future Meetings 2015

September 15, 2015	Board Meeting, 9:00 a.m. *Set Preliminary Levy, 10:00 a.m. *BKV work session after meeting
September 17, 2015	Board of Adjustment Meeting, 3:00 p.m. Environmental Services Building
September 22, 2015	Board Meeting, 9:00 a.m.
September 29, 2015	No Board Meeting
October 6, 2015	Board Meeting, 9:00 a.m.
October 8, 2015	P&Z Meeting, 7:00 p.m. Environmental Services Building
October 13, 2015	No Board Meeting
October 15, 2015	Board of Adjustment Meeting, 3:00 p.m. Environmental Services Building
October 20, 2015	Board Meeting, 9:00 a.m.
October 27, 2015	Board Meeting, 9:00 a.m. *Nicollet/Le Sueur Joint Meeting, 12:00 in the President's Dining Room at the Student Center at Gustavus College in St. Peter
November 3, 2015	Board Meeting, 9:00 a.m.
November 10, 2015	No Board Meeting
November 11, 2015	Offices closed for Veteran's Day
November 12, 2015	P&Z Meeting, 7:00 p.m.

Environmental Services Building

November 17, 2015	Board Meeting, 9:00 a.m.
November 17, 2015	Le Sueur – Waseca Community Health Board (CHB) 1:30pm in the Waterville City Council Chambers
November 19, 2015	Board of Adjustment Meeting, 3:00 p.m. Environmental Services Building
November 24, 2015	Board Meeting, 9:00 a.m.
November 26-27, 2015	Offices Closed for Thanksgiving
December 1, 2015	Board Meeting, 9:00 a.m.
December 8, 2015	No Board Meeting
December 10, 2015	P&Z Meeting, 7:00 p.m. Environmental Services Building
December 15, 2015	Board Meeting, 4:30 p.m.
December 22, 2015	Board Meeting, 9:00 a.m.