



---

# Le Sueur County, MN

Tuesday, September 15, 2015

Board Meeting

## Item 7

**10:40 am Mike Schultz (10 min)**

*RE: Gravel Tax Project*

Staff Contact:



# Le Sueur County Soil & Water Conservation District

Le Sueur County SWCD  
181 W Minnesota St  
Le Center, MN 56057

Tel. (507) 357-4879 Ext. 3  
Website: [www.lesueurswcd.org](http://www.lesueurswcd.org)

9/4/2015

## Le Sueur County Rice Lake WPA Wetland Restoration Montgomery Township, Section 12

The Le Sueur County SWCD and Environmental Services have been working with the US Fish and Wildlife Service to restore a 16 acres wetland on the Rice Lake WPA. The wetland restoration was identified by the Le Sueur County LCCMR Grant to restore the basin. The Wetland has a 3 square mile watershed that feed through the 16 acre wetland. The project needed an engineered steel sheet pile outlet structure (similar to the 2009 Renneberg CD 28 outlet). The SWCD has engineered plans and all bids have been received for this project. The cost came in much higher than previously planned so the project is on hold until we can acquire the remaining funds.

### Costs:

Lowest Bid Received:	\$62,526
<u>Engineering:</u>	<u>\$10,362</u>

<b>Total:</b>	<b>\$72,888</b>
---------------	-----------------

### Project funds:

LCCMR Grant Amount:	\$40,000
LCCMR Grant Amendment:	\$8,000

<u>Local Sportsmen Groups Contribution:</u>	<u>\$14,500</u>
---	-----------------

<b>Total:</b>	<b>\$62,500</b>
---------------	-----------------

### Balance:

<b>Approximate Request Amount:</b>	<b>\$10,388</b>
------------------------------------	-----------------

Aggregate Tax  
Restoration Fund  
\$373,964.05

I am requesting **\$10,500 of gravel tax funds** for this project. This project will provide 16 acres of wetland storage in the Sand Creek Watershed/ CD 54 where additional storage is desperately needed. This project is shovel ready and contractor is on standby to complete. The LCCMR funds for this project **expire at the end of 2015**.

Sincerely,



Michael Schultz  
Senior District Technician

#### CONSTRUCTION NOTES:

THE U.S. FISH AND WILDLIFE SERVICE IS RESPONSIBLE FOR OBTAINING ANY NECESSARY PERMITS OR APPROVALS FOR THE PROJECT.

BEFORE START OF CONSTRUCTION, THE OWNER OF ANY UTILITIES INVOLVED MUST BE NOTIFIED. THE EXCAVATOR IS RESPONSIBLE FOR GIVING NOTICE BY CALLING "GOPHER STATE ONE-CALL" AT (800) 252-1166 AT LEAST 48 HOURS PRIOR TO ANY EXCAVATION.

THE CONTRACTOR SHALL COORDINATE WITH THE OWNER TO LOCATE ANY PRIVATE UTILITIES THAT MAY BE IN THE VICINITY OF THE PROJECT. THE SOUTH CENTRAL TECHNICAL SERVICE AREA MAKES NO REPRESENTATION OF THE EXISTENCE OR NON-EXISTENCE OF UTILITIES. THE ABSENCE OF UTILITIES ON DRAWINGS DOES NOT ASSURE THAT THERE ARE NO UTILITIES ON SITE.

A PRE-CONSTRUCTION CONFERENCE WITH THE OWNER, CONTRACTOR(S), SWCD REPRESENTATIVE, AND SOUTH CENTRAL TSA ENGINEER OR TECHNICIAN SHALL BE HELD ONE WEEK PRIOR TO START OF CONSTRUCTION. ANY WORK DONE BEFORE CONFERENCE WILL JEOPARDIZE PROJECT APPROVAL AND FUNDING.

THE SPECIFICATIONS INCLUDED IN THE PROJECT MANUAL APPLY TO ALL MATERIALS AND CONSTRUCTION WORK. THESE SPECIFICATIONS ARE PART OF THIS PLAN.

SEE THE BID SCHEDULE FOR GENERAL TERMS AND CONDITIONS, METHODS OF MEASUREMENT, AND PAYMENT INFORMATION.

CHANGES IN THE DRAWINGS OR SPECIFICATIONS MUST BE AUTHORIZED BY THE OWNER AND THE RESPONSIBLE ENGINEER.

#### RESTORATION NOTES:

TOP-DRESS THE PROPOSED EMBANKMENTS WITH A MINIMUM OF 6 INCHES OF TOPSOIL.

DISTURBED AREAS WILL BE SEEDDED WITH THE FOLLOWING SEED MIXTURES:

UPLAND AREAS AND EMBANKMENTS - USE MINNESOTA STATE SEED MIX 35-541 (MESIC PRAIRIE), AT A RATE OF 12 LBS PER ACRE.

WETLAND AREAS - USE MINNESOTA STATE SEED MIX 34-261 (RIPARIAN), AT A RATE OF 31.5 LBS PER ACRE.

THE WETLAND MIXTURE SHOULD BE USED IN DISTURBED AREAS BELOW ELEVATION 1033.

SEE THE SPECIFICATIONS FOR THE LISTING OF SPECIES IN EACH SEED MIX.

AREAS TO BE SEEDDED WITH THE UPLAND MIX SHALL BE FERTILIZED WITH 80 LBS/ACRE EACH OF NITROGEN (N), PHOSPHORUS (P205) AND POTASH (K2O). FERTILIZER SHALL BE SPREAD AND INCORPORATED PRIOR TO SEEDING.

FERTILIZER IS NOT REQUIRED IN AREAS TO BE SEEDDED WITH THE WETLAND MIXTURE.

DISTURBED AREAS SHALL BE PROTECTED WITH STRAW MULCH MEETING THE REQUIREMENTS OF MNDOT STANDARD SPECIFICATION 3882, TYPE 1. THE MULCH SHALL CONSIST OF GRAIN STRAW ONLY. MULCH SHALL BE APPLIED AT A RATE OF 2 TONS PER ACRE, AND DISK-ANCHORED.

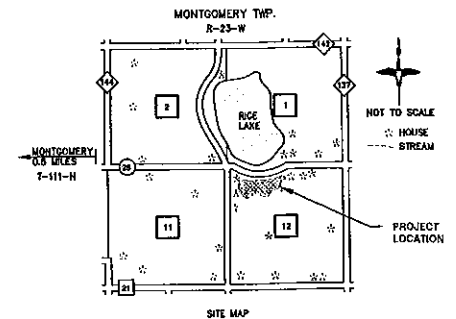
ESTIMATED QUANTITIES					
ITEM	ITEM DESCRIPTION	QUAN.	UNIT	CONST. SPEC.	MATERIAL SPEC.
1	MOBILIZATION	1	L.S.		
2	CLEARING & GRUBBING	1	L.S.	MN-2	
3	REMOVE AND DISPOSE OF EXISTING 48" CMP CULVERT.	1	L.S.		
4	SALVAGING & SPREADING TOPSOIL. Includes: 0.5' topsoil excavation. (See earthwork summary this sheet)	1	L.S.	MN-26	
5	EARTHWORK-EARTHFILL-Includes: (See earthwork summary this sheet) (See sheet 2 for details)	1708	C.Y. (P)	MN-23	
6	EXCAVATION - GRADING SPILLWAY, Includes: (embankment #2 and #3)	2	EACH	MN-21	
7	FURNISH & INSTALL STEEL WEIR STRUCTURE, Includes: (steel weir, top cap, stoplog locking mechanism, and stoplogs. (See sheet 4 for details)	1	L.S.		SP-1 SP-2 SP-3
8	FURNISH & INSTALL MUSKRAT FENCING (8 FT) ON PROPOSED EMBANKMENTS. (See sheet 4 for detail)	1450	L.F.		SEE SHEET 4
9	FURNISH & INSTALL GEOTEXTILE FABRIC, NON-WOVEN CLASS I (See sheet 3 for details)	300	S.Y.	SEE SHEET 4	MN-592
10	FURNISH & INSTALL RIPRAP (QUARTZITE) - MNDOT CLASS III (See sheet 3 for details)	183	TONS		SEE SHEET 4
11	FERTILIZE	2.0	AC.	MN-6	
12	SEEDING - UPLAND AND EMBANKMENT MIX	2.0	AC.	MN-5	
13	SEEDING - WETLAND MIX	1.0	AC.	MN-6	
14	MULCHING	3.0	AC.	MN-6	

#### EARTHWORK SUMMARY

LOCATION	EARTHFILL (ITEM 5)	SALVAGE & SPREAD TOPSOIL (ITEM 4)
EMBANKMENT 1	309 C.Y.	124 C.Y.
EMBANKMENT 2	824 C.Y.	211 C.Y.
EMBANKMENT 3	575 C.Y.	160 C.Y.
BORROW AREAS	---	427 C.Y.
TOTAL	1,708 C.Y.	922 C.Y.

NOTES  
1. ASSUMES 6 INCHES OF TOPSOIL.  
2. EARTHFILL OBTAINED FROM LOCATIONS SHOWN ON PLANS.

## OUTLET STRUCTURE U.S. FISH & WILDLIFE SERVICE RICE LAKE WATERFOWL PRODUCTION AREA MONTGOMERY TWP. LE SUEUR COUNTY



#### SHEET INDEX

SHEET NO.	TITLE
1	COVER SHEET
2	PLAN VIEW SHEET
3	EMBANKMENT #1 PROFILE
4	CAP & STOPLOG GUIDE DETAILS
5	STOPLOG LOCKING DETAILS
6	STOPLOG DETAILS
7	EMBANKMENT 2&3 PLAN/PROFILE

ENGINEERING DESIGN DATA  
WATERSHED AREA = 3.8 SQUARE MILES

#### CONSTRUCTION CERTIFICATION STATEMENT

I HEREBY CERTIFY THAT A FINAL INSPECTION OF THIS PROJECT HAS BEEN PERFORMED AND THAT THE WORK COMPLETED IS IN ACCORDANCE WITH THE PLAN AND SPECIFICATIONS. ANY CHANGES TO THE PLANS AND SPECIFICATIONS ARE SO NOTED.

SIGNATURE:

DATE:

I HEREBY CERTIFY THAT THIS PLAN WAS PREPARED BY ME OR UNDER MY DIRECT SUPERVISION AND THAT I AM A DULY LICENSED PROFESSIONAL ENGINEER UNDER THE LAWS OF THE STATE OF MINNESOTA.

PRINT NAME: RYAN T. JONES

SIGNATURE: *Ryan T. Jones*  
DATE: 7/31/15 LICENSE # 44622

#### SURVEY

Surveyed	Date
GPS/RTJ	9/17/14
Drawn	Date
GPS	9/18/14
Checked	Date

#### DESIGN

Designed	Date
RTJ	2/2015
Drawn	Date
GPS	4/2015
Checked	Date
RTJ	5/19/15

SOUTH CENTRAL  
TECHNICAL SERVICE AREA  
1160 S. VICTORY DRIVE  
MANKATO, MINN.  
(507) 345-1061

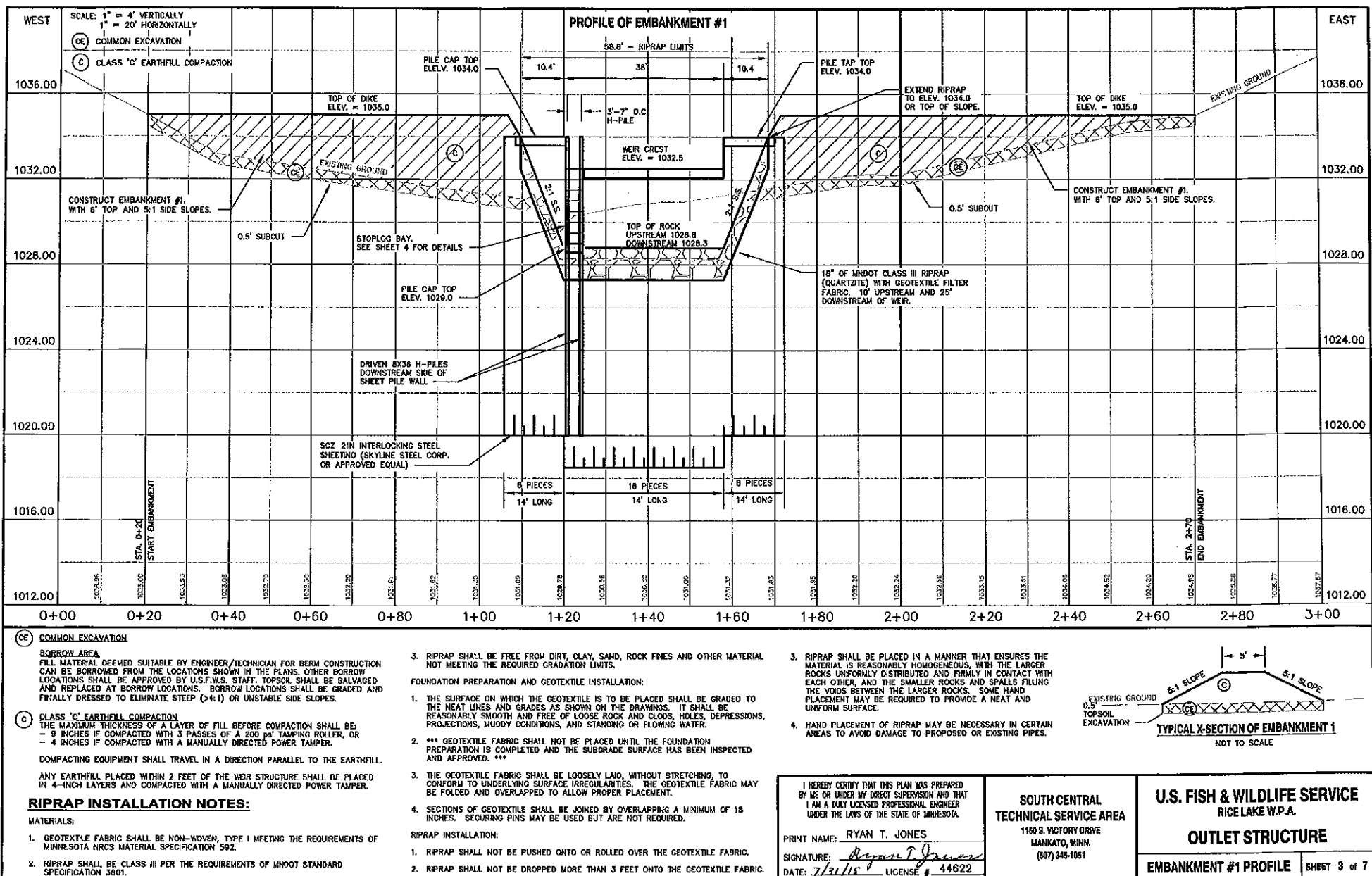
U.S. FISH & WILDLIFE SERVICE  
RICE LAKE W.P.A.

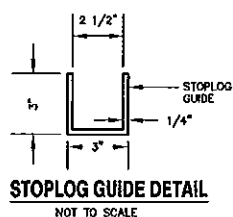
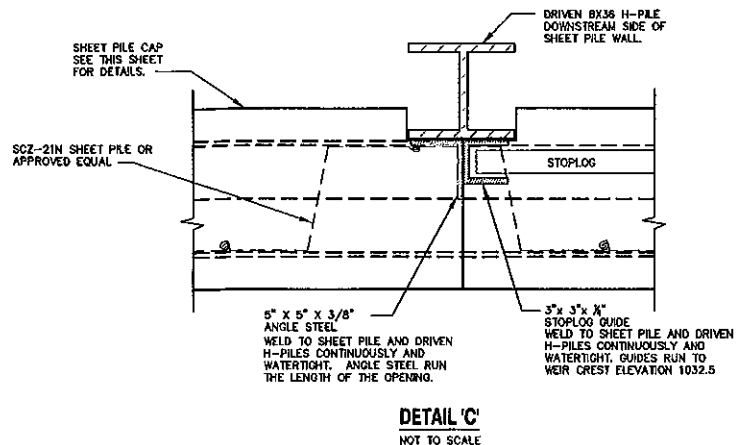
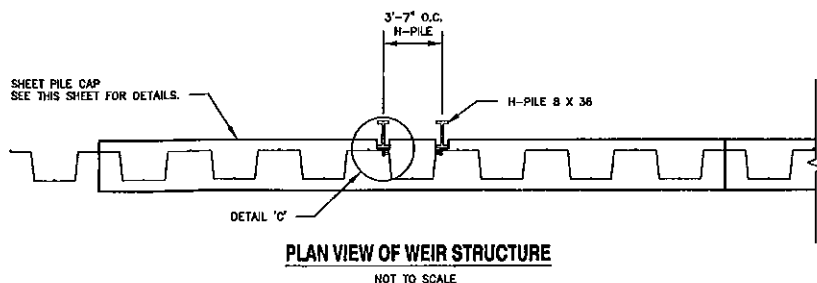
OUTLET STRUCTURE

COVER SHEET

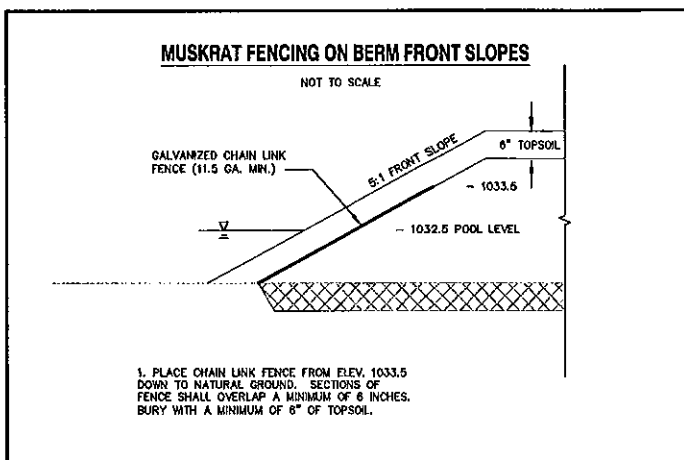
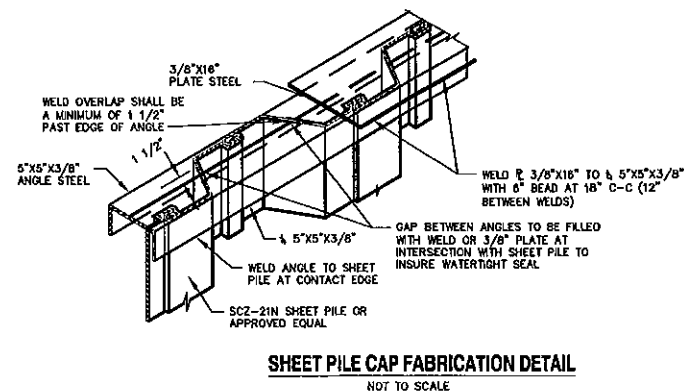
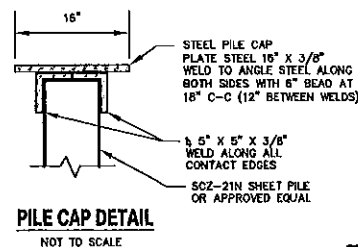
Sec. 12	T. 111 N.	R. 23 W.
County: LE SUEUR		
Township: MONTGOMERY		
Near: MONTGOMERY		SHEET 1 of 7







NOTE: SUPPLIER MAY SPLIT  
6"x3"x1/4" TUBE STEEL TO  
FABRICATE STOPLOG GUIDES.



I HEREBY CERTIFY THAT THIS PLAN WAS PREPARED  
BY ME OR UNDER MY DIRECT SUPERVISION AND THAT  
I AM A DULY LICENSED PROFESSIONAL ENGINEER  
UNDER THE LAWS OF THE STATE OF MINNESOTA.

PRINT NAME: RYAN T. JONES

SIGNATURE: *Ryan T. Jones*

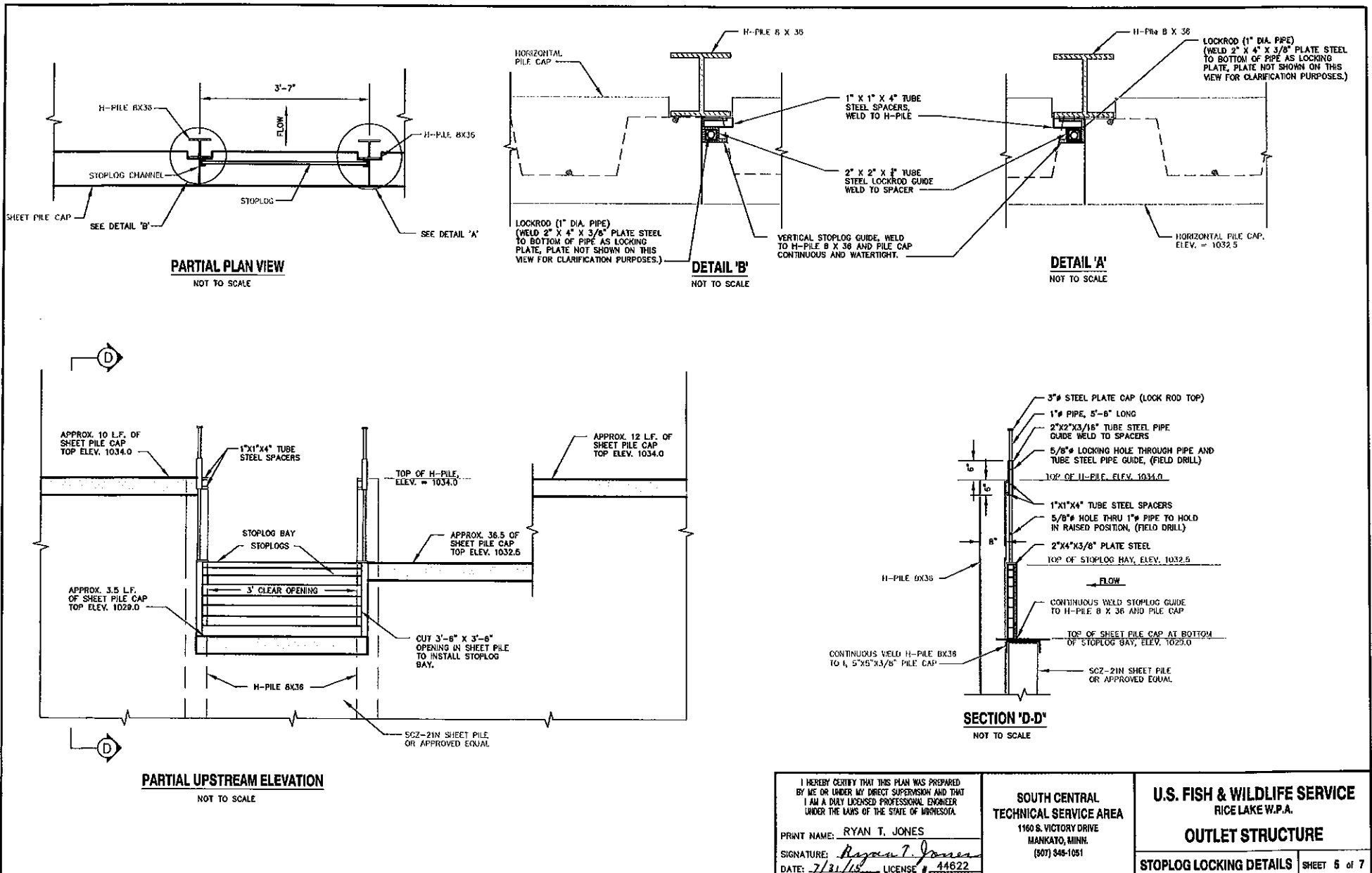
DATE: 7/31/15 LICENSE # 44622

**SOUTH CENTRAL  
TECHNICAL SERVICE AREA**

1160 S. VICTORY DRIVE  
MANKATO, MINN.  
(507) 345-1051

**U.S. FISH & WILDLIFE SERVICE**  
RICE LAKE W.P.A.  
**OUTLET STRUCTURE**

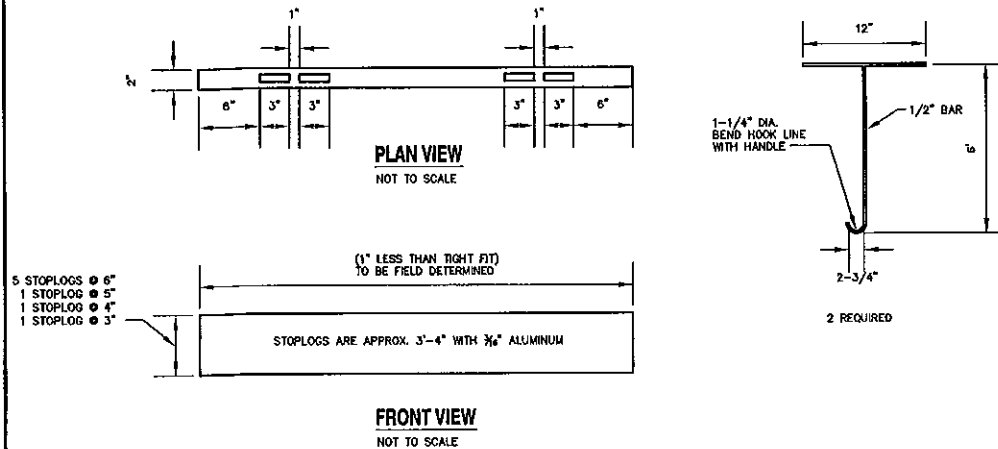
CAP AND STOPLOG GUIDE DETAILS SHEET 4 of 7





### ALUMINUM STOPLOG AND LIFTING HOOK DETAIL

NOT TO SCALE



### CONSTRUCTION SPECIFICATIONS

#### GENERAL

1. REFER TO THE PROJECT MANUAL FOR SPECIFICATIONS ON MATERIALS AND CONSTRUCTION.

#### STEEL WEIR

1. ALL WELDS SHALL BE 1/4" FILLET WELDS.
2. ALL WELDS SHALL BE SUBJECT TO LAMPING. ANY AREAS FAILING WILL BE REWELDED BEFORE ACCEPTANCE OF THE PROJECT.
3. THE TOP OF SHEET PILE SHALL BE TRIMMED TO GRADES INDICATED ON PLANS TO REMOVE ANY DAMAGE CAUSED BY DRIVING.
4. ABOVE ELEVATION 1032.5, THE PILE CAP NEED NOT BE WATERTIGHT. WELDS SHALL CONSIST OF A 6" BEAD AT 18" C-C (12" BETWEEN WELDS).
5. THE LENGTH OF THE PILE CAP IS SHOWN ON THE PLANS.
6. ALL WELDS AROUND THE STOPLOG BAY SHALL BE CONTINUOUS TO ENSURE A WATERTIGHT SEAL.

#### ALUMINUM STOPLOGS

1. ALUMINUM STOPLOGS SHALL BE SUPPLIED BY THE CONTRACTOR.
2. THE CONTRACTOR SHALL CUT STOPLOGS TO PROPER LENGTH AND FABRICATE THE HOLES IN ALL STOPLOGS AS SHOWN. ALTERNATIVELY, THE CONTRACTOR MAY ORDER STOPLOGS FROM THE MANUFACTURER AFTER THE WEIR STRUCTURE HAS BEEN BUILT, TO ENSURE THEY WILL FIT IN THE STOPLOG GUIDES AS CONSTRUCTED.
3. THE FINISHED SURFACE SHALL BE SMOOTH TO PROVIDE A FLAT SURFACE FOR THE STOPLOG ABOVE IT.
4. STOPLOGS SHALL BE CONSTRUCTED OF 6063 ALUMINUM, (43.42 LBS/FT)

### STEEL WEIR STRUCTURE ITEMS

STEEL PILING	TOTAL QUANTITY
14 L.F. - SC2-21N SHEET PILING OR APPROVED EQUAL	28 EA.
TOTAL SQUARE FEET	931 SQ.FT.
WEIR TOP PLATE	
5" X 5" X 3/8" ANGLE STEEL	124 L.F.
16" X 3/8" TOP PLATE STEEL	62 L.F.
H-BEAM	
14 L.F. H-PILE 8-36	2 EA.
STOPLOG GUIDE	TOTAL QUANTITY
3" X 3" X 1/4" (2 1/2" INSIDE DIMENSION) CHANNEL STEEL	7 L.F.
5" X 5" X 3/8" ANGLE STEEL	7 L.F.
ALUMINUM STOPLOGS	
STOPLOGS ARE APPROX. 3'-4". ACTUAL LENGTH TO BE FIELD DETERMINED.	
2" X 6" X 3/16" RECTANGULAR STRUCTURAL TUBING	5 EACH
2" X 5" X 3/16" RECTANGULAR STRUCTURAL TUBING	1 EACH
2" X 4" X 3/16" RECTANGULAR STRUCTURAL TUBING	1 EACH
2" X 3" X 3/16" RECTANGULAR STRUCTURAL TUBING	1 EACH
STOPLOG LOCKING MECHANISM	
3/8" STEEL PLATE CAP (LOCK ROD TOP)	2 EA.
1" STEEL PIPE (LOCK ROD)	11 L.F.
TUBE STEEL 2" X 2" X 3/16" (PIPE GUIDE)	2 L.F.
TUBE STEEL 1" X 1" X 1/4" (PIPE GUIDE SPACERS)	16 IN.
PLATE STEEL 2" X 4" X 3/8" (LOCKING PLATE)	2 EA.

### CHANNEL STABILIZATION QUANTITIES

GEOTEXTILE FABRIC (NON-WOVEN, NRCS CLASS I)	300 SQ. YDS.
RIPRAP (MNDOT CLASS II) (QUARTZITE)	163 TONS

I HEREBY CERTIFY THAT THIS PLAN WAS PREPARED BY ME OR UNDER MY DIRECT SUPERVISION AND THAT I AM A DULY LICENSED PROFESSIONAL ENGINEER UNDER THE LAWS OF THE STATE OF MINNESOTA.

PRINT NAME: RYAN T. JONES

SIGNATURE: *Ryan T. Jones*

DATE: 7/31/15 LICENSE # 44822

**SOUTH CENTRAL  
TECHNICAL SERVICE AREA**

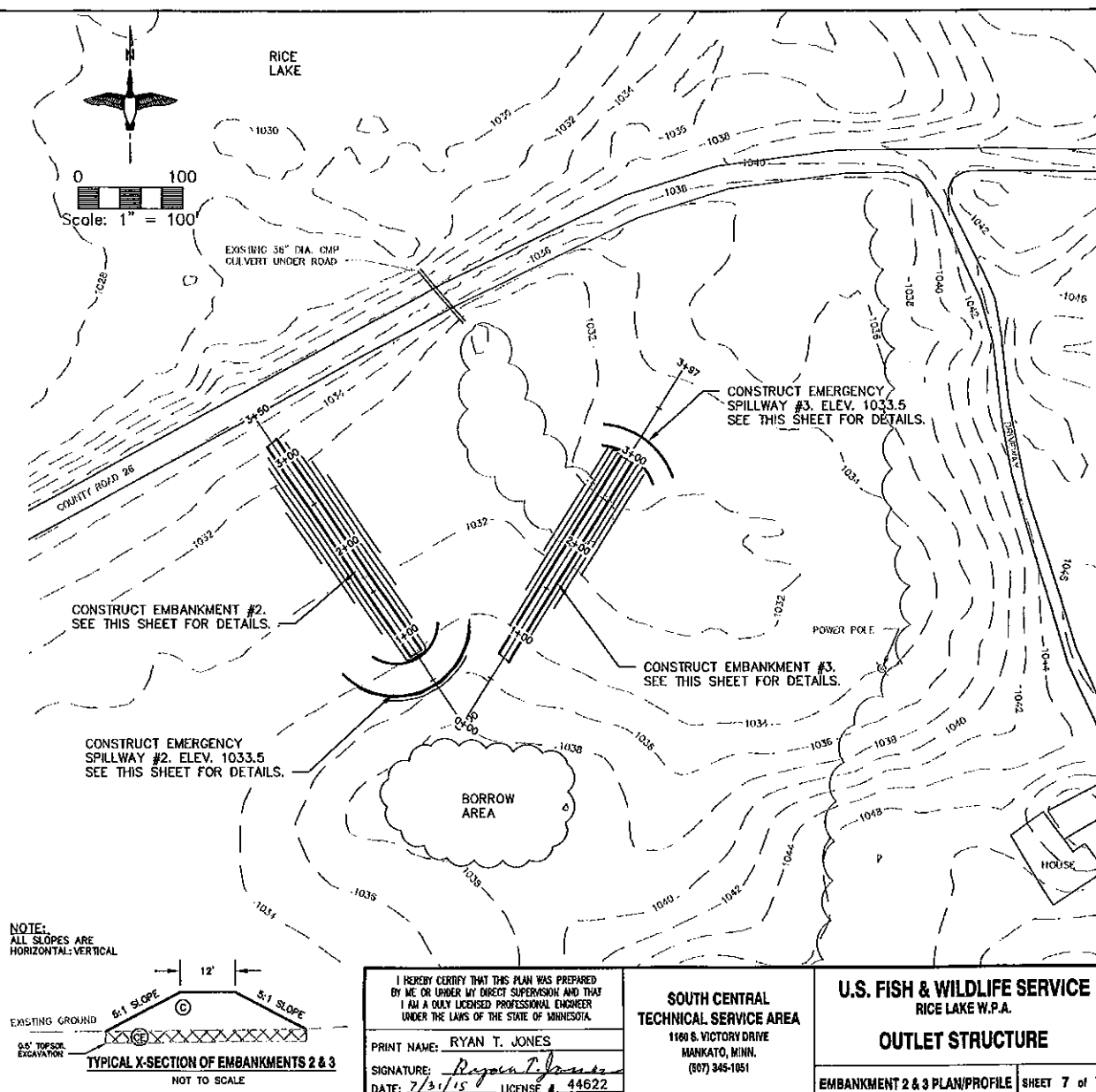
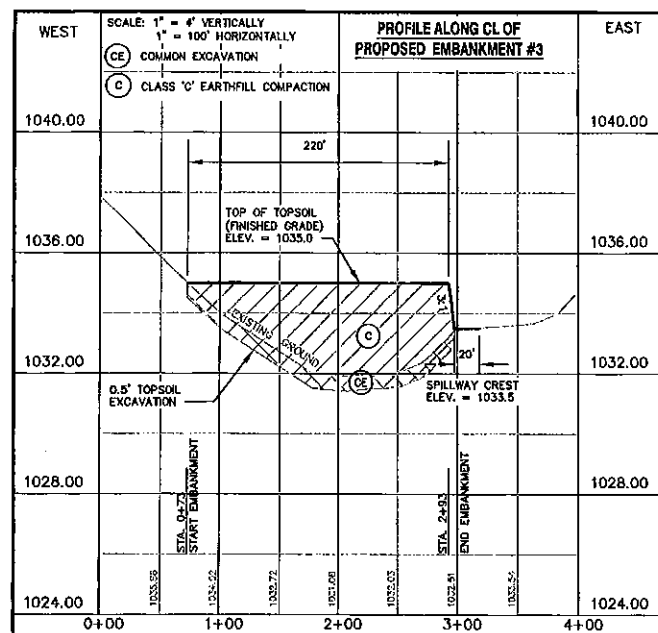
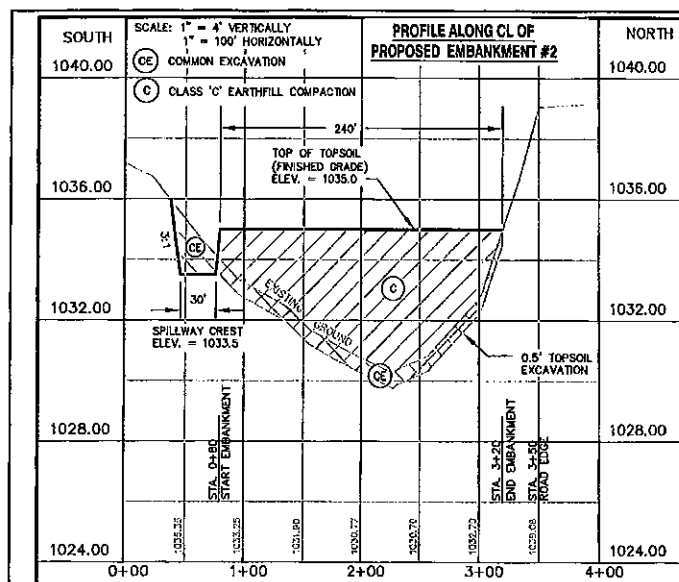
1180 S. VICTORY DRIVE  
MANKATO, MINN.  
(601) 345-1051

**U.S. FISH & WILDLIFE SERVICE  
RICE LAKE W.P.A.**

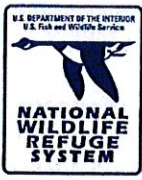
**OUTLET STRUCTURE**

**STOPLOG DETAILS**

**SHEET 6 of 7**

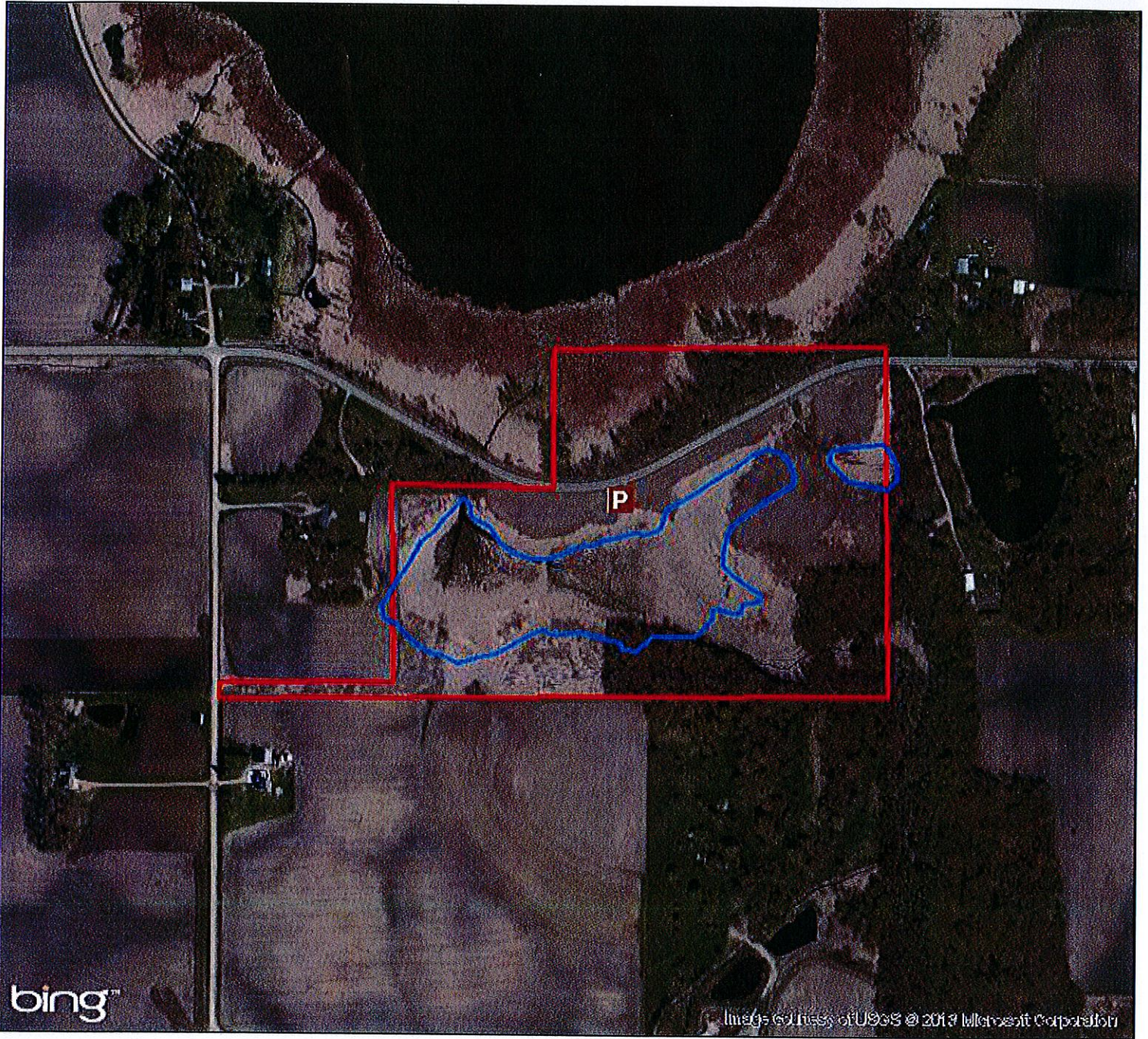






U.S. FISH AND WILDLIFE SERVICE

# Rice Lake WPA



P

Parking Lot



Proposed  
Wetland Extent



WPA Boundary

Le Sueur County  
Montgomery Township  
Section 12



0 0.15 0.3 0.45  
Miles