
Le Sueur County, MN

Tuesday, February 3, 2015

Board Meeting

Item 7

**9:45 a.m. Joe Stangel, MNDNR and Josh Kavanaugh, Ducks Unlimited
(30 min)**

RE: County Board Notification of Acquisitions at Sanborn Lake

Staff Contact:



311 EAST LAKE GENEVA ROAD, ALEXANDRIA, MINNESOTA 56308 • (320) 762-9916 • FAX (320) 759-1567 • jschneider@ducks.org

Jon P. Schneider

Manager – Minnesota Conservation Programs

December 31, 2014

Commissioner David Gliszinski
Le Sueur County Board of Commissioners
88 South Park Avenue
Le Center, Minnesota 56507

Subject: Notification of land acquired in Sections 35 and 36 of Lanesburgh Township (T112N, R23W) in Le Sueur County for donation to the state and inclusion in the Sanborn Lake Wildlife Management Area, as required by M.L. 2013, Chapter 137, Article 1, Section 2, Subd. 4(c)

Dear Commissioner Gliszinski and Le Sueur County Board of Commissioners:

This letter is to inform you of our recent purchase of three parcels of land in Lanesburgh Township on the south side of Sanborn Lake in Sections 35 and 36 in Le Sueur County. These three parcels were purchased for donation to the State of Minnesota for inclusion in the new Sanborn Lake state Wildlife Management Area (WMA). Please see the map attached. The acquisitions include 87 acres and 126 acres purchased from Adeline Dietz and 23 acres purchased from David and Amy Peterson. Ducks Unlimited and Minnesota Department of Natural Resources (DNR) staff are available to attend a future meeting of the County Board of Commissioners to discuss these recent land acquisitions and donations to the Minnesota DNR.

Ducks Unlimited purchased these lands in 2014 through our affiliate land holding organization, Wetlands America Trust. As required by the state Outdoor Heritage Fund appropriation statute above, we are notifying you of these land acquisitions and donations to the Minnesota DNR. The land is comprised of cropland, wetland and trees. Ducks Unlimited paid taxes in full during our brief ownership in 2014, and Minnesota DNR will make "Payment In Lieu of Taxes" (PILT) in future years.

These land acquisitions were funded through a state Outdoor Heritage Fund (Legacy Amendment) appropriation to Ducks Unlimited in 2013 for "Shallow Lake & Wetland Protection Program - Phase III", M.L. 2013, Chapter 137, Article 1, Section 2, Subdivision 4(c), as recommended by the Lessard-Sams Outdoor Heritage Council. These state "dedicated conservation funds" resulted from passage of the Clean Water, Land, & Legacy Amendment to Minnesota's Constitution by Minnesota voters in November 2008.

Although a county board resolution is required to approve state Wildlife Management Area acquisitions made directly by the Minnesota DNR, donations of land to the DNR from non-profit conservation groups such as Ducks Unlimited do not require such approval. Donations of land purchased using state OHF grant fund to the Minnesota DNR require only county board notification, and discussion if requested. Minnesota DNR staff will contact you to discuss this land donation further, but please let me know if you have any questions or concerns.

Sincerely,

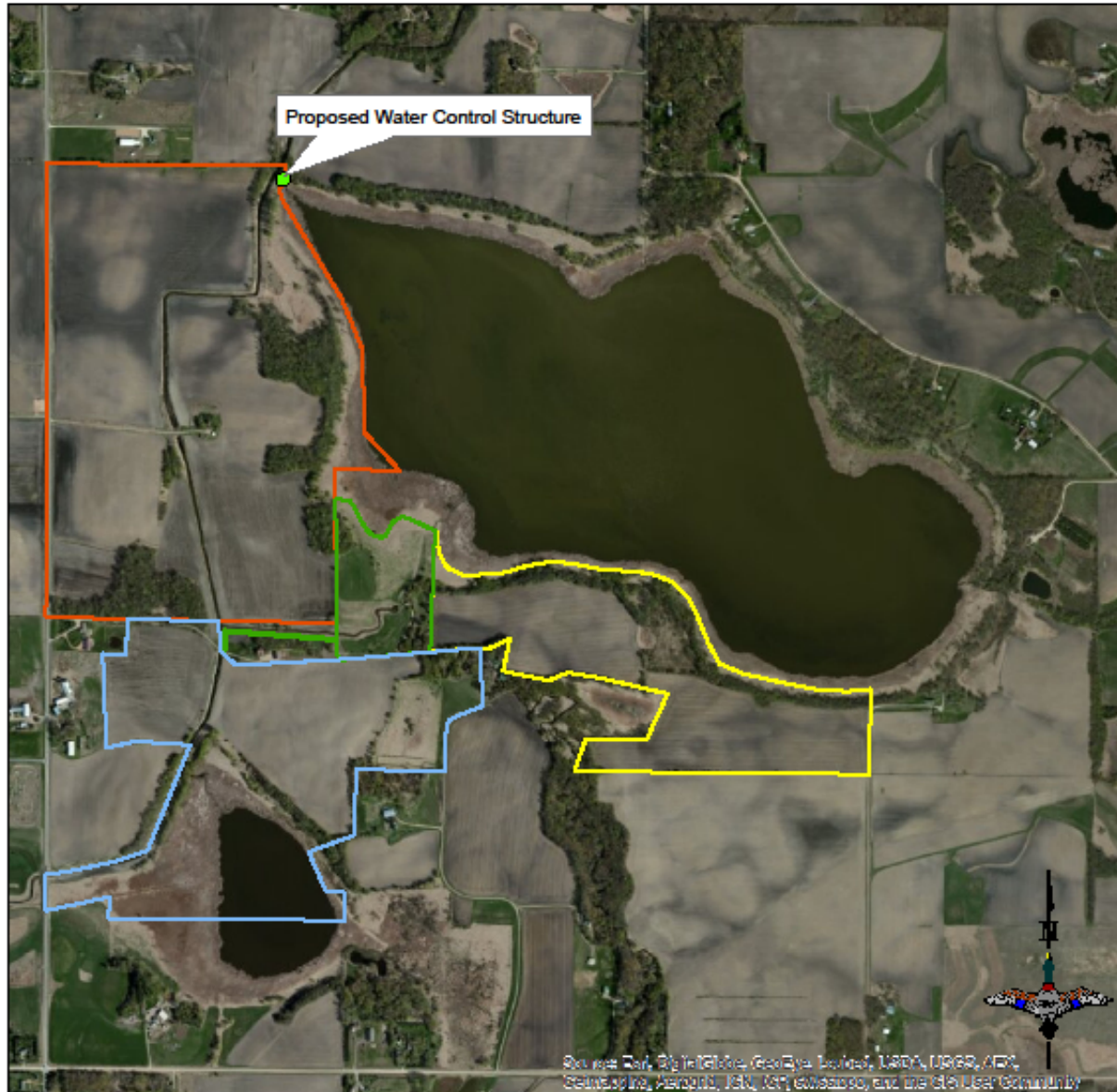
Jon P. Schneider
Manager – Minnesota Conservation Programs

Copies: Joseph Stangel, Nicollet Area Wildlife Manager - Minnesota DNR
Josh Kavanagh, Regional Biologist – Ducks Unlimited

LEADER IN WETLANDS CONSERVATION

Sanborn Lake

Le Sueur County, MN



**LIVING
LAKES**



- Sanborn Lake WMA
- Dietz Acquisition (87.31 acres)
- Dietz II Acquisition (aprx. 133 acres)
- Peterson Acquisition (22.90 acres)



LEADER IN WETLANDS CONSERVATION



ERAN SANDQUIST
State Coordinator - MN
410 Lincoln Ave South (Box 91)
South Haven, MN 55382

Phone: (763) 242-1273
Fax: (320) 236-7755
Email: esandquist@pheasantsforever.org

January 21st, 2015

Le Sueur County Commissioners
88 South Park Avenue
Le Center, MN 56057

Dear Commissioners:

Pheasants Forever has received an appropriation from the Legislature as recommended by the Lessard-Sams Outdoor Heritage Council to purchase a 217.54 acre State Wildlife Management Area (WMA) within your county described as:

N1/2 NW1/4 Sect. 35 and GL 1, GL 2, & W1/2 SW1/4 Sect 26-112-23 w/ exc.

The family that owns this property is very interested in seeing their land conserved as wildlife habitat and available for public use.

Whereas, a county board resolution is required for MN-DNR Wildlife Management Area direct acquisitions, donations of WMA land by conservation groups like Pheasants Forever utilizing Lessard-Sams Outdoor Heritage (Legacy) Council funding requires county board notification. If necessary, Pheasants Forever is available to discuss with the board this important WMA. As always, State of Minnesota PILT payments will be made to Le Sueur County when this parcel becomes state WMA land.

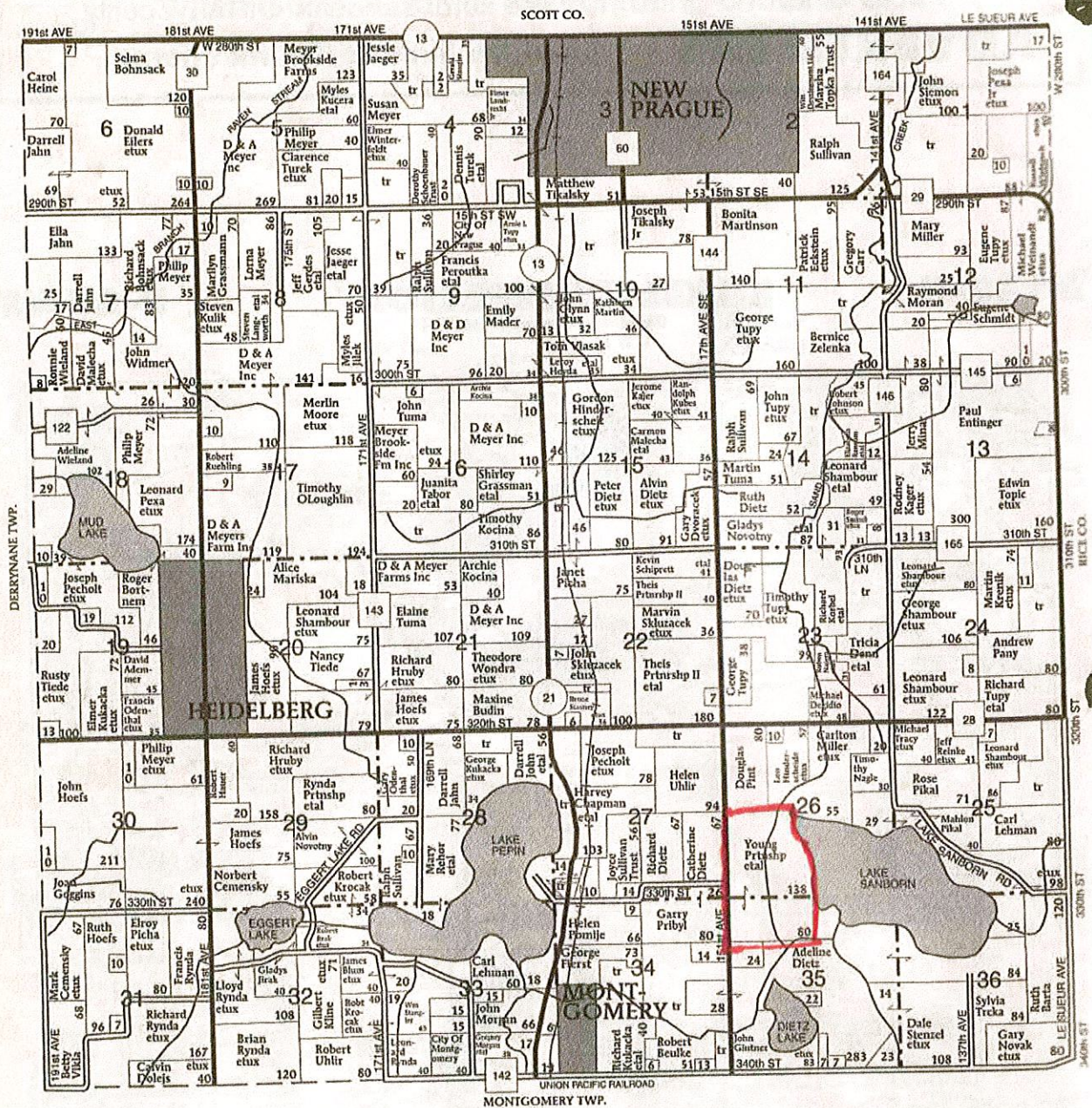
Pheasants Forever intends to donate this parcel to the Minnesota DNR, Section of Wildlife as Sanborn Lake WMA.

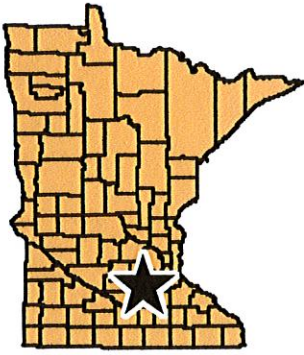
The purpose of this letter is to inform you of this upcoming transaction and allow for any discussion you feel necessary.

Sincerely,

Eran Sandquist
State Coordinator - MN
Pheasants Forever Inc.

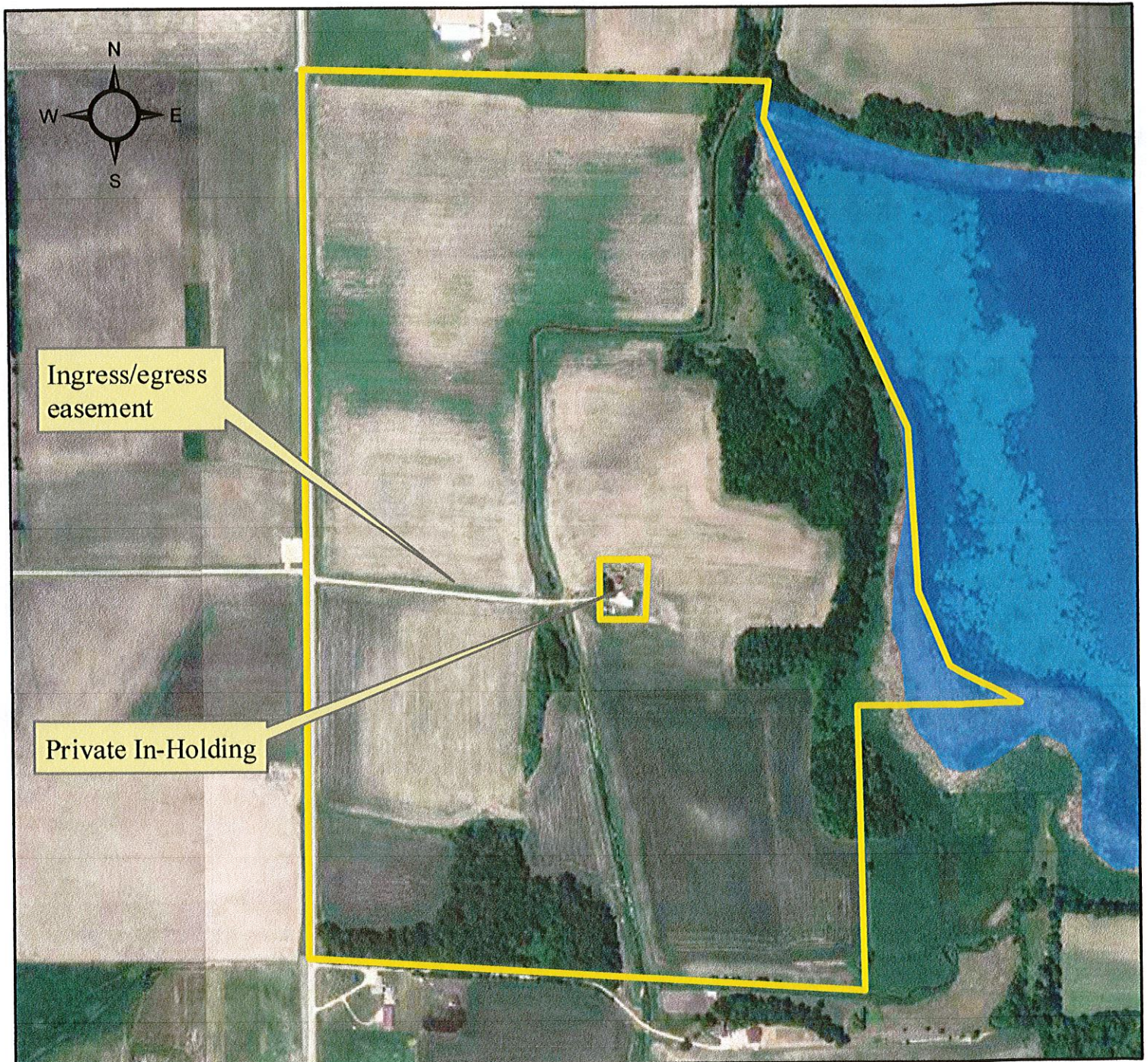
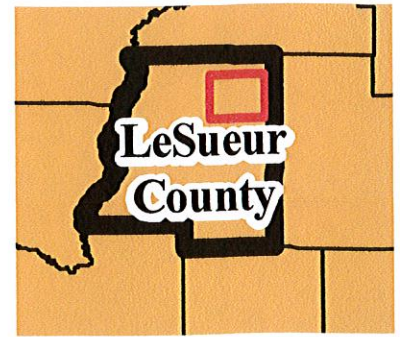
Cc: Joseph Stangel, Area Wildlife Supervisor, MN Department of Natural Resources





Sanborn WMA

Lanesburgh Township
T112N, R23W, S26,35
Approximatley 217.54 acres



 **Subject Property**

0 0.1 0.2
Miles