



**LE SUEUR COUNTY BOARD OF COMMISSIONERS
MEETING AGENDA
August 2, 2018**

1. **9:00 a.m. Le Sueur County Ditch 22 Informational Meeting**
2. **9:00 a.m. Le Sueur County Ditch 35 Informational Meeting**
3. **9:00 a.m. Le Sueur County Ditch 49 Informational Meeting**
4. **9:30 a.m. Le Sueur - Rice County Joint Ditch 54 Meeting**



Le Sueur County, MN

Thursday, August 2, 2018

Board Meeting

Item 1

9:00 a.m. Le Sueur County Ditch 22 Informational Meeting

Staff Contact:

TIMELINE FOR COUNTY DITCH #22

3/31/1903	Petition
8/7/1903	Engineers Report
8/17/1903	Viewers Oath
9/2/1903	Viewers Report
10/6/1903	Order Establishing Ditch
12/7/1903	Lien
1/2/1906	Engineers report – extension of ditch

9/21/1925 Improvement request

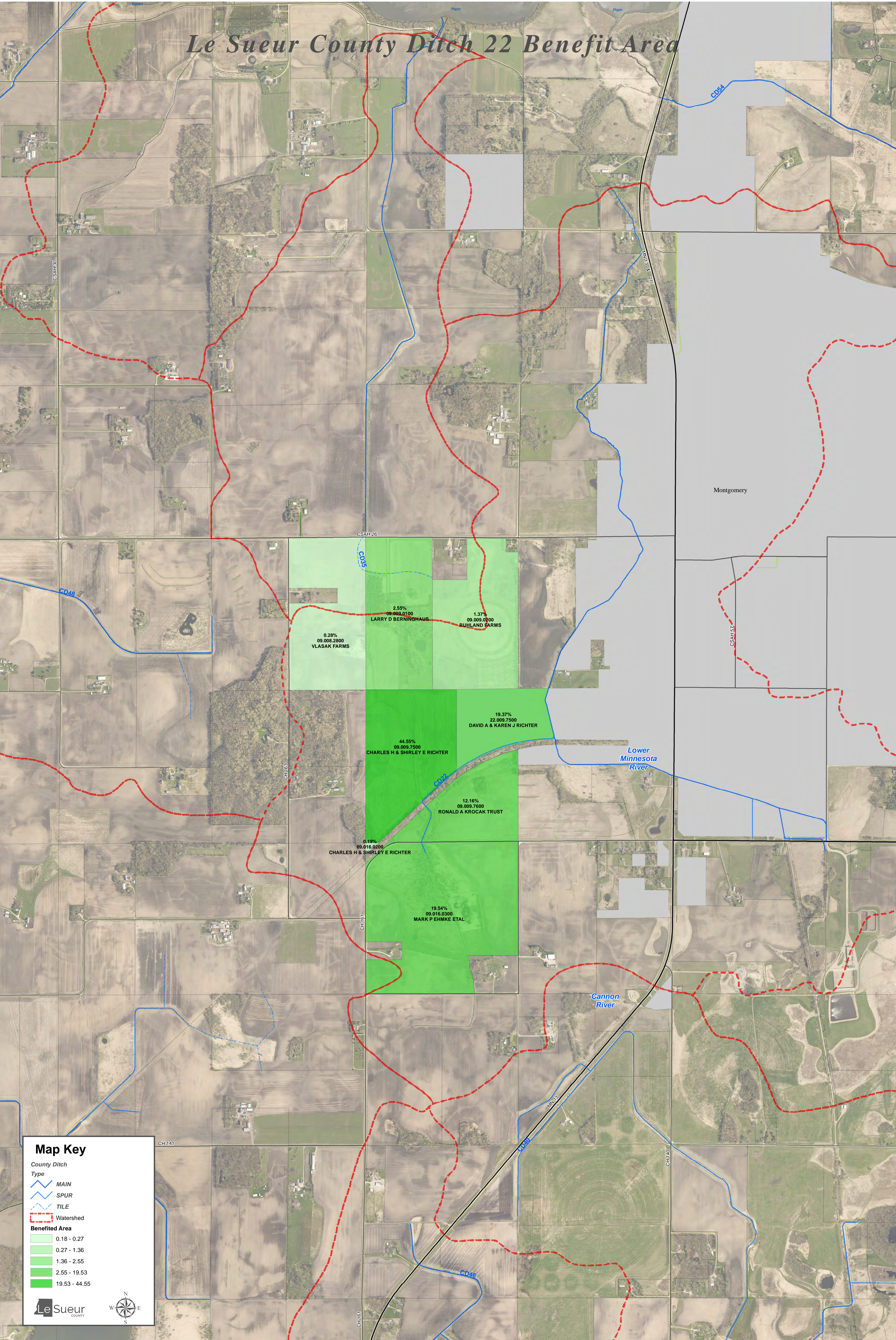
3/17/1926	Report of Engineer
4/1/1926	Viewers appointed
4/7/1926	Viewers Oath
4/15/1926	Viewers Report
5/25/1926	Improvement Order
8/12/1926	Lien
8/1926	Railroad correspondence

7/12/1943	Petition for Improvement and Repair
10/11/1943	Engineer's Report on Improvement
11/8/1943	Viewers Oath
1/31/1944	Viewers Report
3/14/1944	Order for Improvement
4/28/1944	Correction to Viewers Report
8/8/1945	Lien

8/18/1970	Lien release (8/8/1945)
6/5/1975	Ditch Inspector's Report – Cleaning
9/16/1976	Lien
3/22/1977	Minutes – damaged bridge repair cost split in thirds between LSC Highway, City of Montgomery and CD22
8/15/1978	Inspection Report
6/16/1980	Lien
4/7/1987	Lien release (6/16/1980)
4/27/1982	Lien release (9/16/1976)
6/18/1982	Lien release Railroad right of way
12/8/1989	Lien release Montgomery Industrial Development
10/17/1988	Lien
12/14/1990	Lien
9/18/1991	Lien release (10/17/1988)
1/12/1995	Petition from State to make changes in ditch
8/15/1995	Lien
6/6/1996	Petition - Seneca Foods relocation project
8/13/1996	Order Establishing Relocation of Ditch
10/7/1996	Seneca variance request
10/25/1996	Drainage Facility and Waterway Agreement
12/13/1996	Lien release (12/14/1990)
2/20/1997	Seneca request to repair/replace 48" culvert under Union Pacific RR main line
10/5/1998	MPCA letter regarding installation and maintenance of a check dam
10/15/1998	Seneca offer to clean portion of ditch
10/9/2000	Seneca request to relocate existing entrance approach
6/18/2002	Petition from Montgomery to allow City to use 22 as an outlet

8/27/2002	Order Granting Outlet Permit to City of Montgomery
08/27/2005	Drainage System Transfer to City of Montgomery
1998	Lien release (1995 lien)
5/24/16	The Board authorized a 360% lien for Le Sueur County Ditch #22 in the amount of \$13,049.96 to be spread over six years beginning with taxes payable in 2017. The interest rate is 4% and the lien will be filed June 15, 2016.

Le Sueur County Ditch 22 Benefit Area



Map Key

County Ditch

Type

- MAIN
- SPUR
- TILE

Watershed

Benefited Area

- 0.18 - 0.27
- 0.27 - 1.36
- 1.36 - 2.55
- 2.55 - 19.53
- 19.53 - 44.55

Le Sueur
COUNTY

**Auditor's Tabular Assessment Statement *(1) For the Creation of a Fund to be used for the Repair of *(2) For the Repair of Le Sueur
County Ditch No. 22 in the County of Le Sueur Minnesota**

***If the lien is for the Creation of a fund to be used for repairs in the future strike out (2). If the lien is for repairs already made strike out (1).**

Names of the Owners of all Lands and the Names of all Public Roads, Corporate Roads and Railroads that are Assessed for the Repair of said Ditch.	Description of each Parcel of Land to be Assessed for the Repair of said Ditch as it Appears from Original Lien Statement for Construction of said Ditch.	Section	Township	Range	Number of acres in each tract according to assessment rolls and tax list.	Estimated number of acres benefited.	Amount that each tract of land and each public road, corp-orate road and rail-road was benefitted by the construction of said ditch.	Amount that each tract of land and each public road, corp-orate road and rail-road is liable for and must pay for the repair of such ditch.	Board Meeting--May 24, 2016, 4% int, 360% lien, 6 years, Filed-- June 15, 2016 (Actually filed 7/6/16)
					Acres	Acres	Dollars	Dollars	
Vlasak Farms %Vlasak Brothers	E 1/2 of NE 1/4 less 5 ac	8	111	23	75.00	2.00	10.00	36.00	09.008.2800
	Section 9 - NW 1/4								
Larry D Berninghaus	W 70 ac of NW 1/4	9	111	23	70.00	18.50	92.50	333.00	09.009.0100
Ruhland Farms %William Ruhland	E 90 ac of NW 1/4 less 11.16 ac	9	111	23	78.84	6.20	49.60	178.56	09.009.0200
Charles & Shirley E Richter	67.25ac of W 1/2 of SW 1/4 N of RR	9	111	23	67.25	60.16	1401.60	5,045.76	09.009.7500
Charles & Shirley E Richter	9.25 ac of E 1/2 of SW 1/4 N of RR	9	111	23	9.50	9.34	213.40	768.24	09.009.7500
Ronald Krocak Trust	40 ac of E1/2 of SW 1/4 S of RR	9	111	23	40.00	5.51	110.00	396.00	09.009.7600
Ronald Krocak Trust	9 1/2 ac of W 1/2 of SW1/4 lying S of RR	9	111	23	9.50	9.45	330.75	1,190.70	09.009.7600
David A & Karen J Richter	That portion of NW 1/4 of SE 1/4 lying N of RR & W of CD	9	111	23	10.12	8.25	288.60	1,038.96	22.009.7500
David A & Karen J Richter	19.88 ac of E 1/2 of SW 1/4	9	111	23	19.88	14.26	413.54	1,488.74	22.009.7500
	Section 16 all								
Mark P Ehmke et al	NW 1/4 less RR & less .9 ac NW of RR & less 14.47 ac	16	111	23	143.63	52.50	708.28	2,549.81	09.016.0300
Charles & Shirley E Richter	That part of NW 1/4 of NW 1/4 lying NW of RR	16	111	23	0.90	0.50	6.72	24.19	09.016.0200
					Grand Total:		\$ 3,624.99	13,049.96	



Le Sueur County, MN

Thursday, August 2, 2018

Board Meeting

Item 2

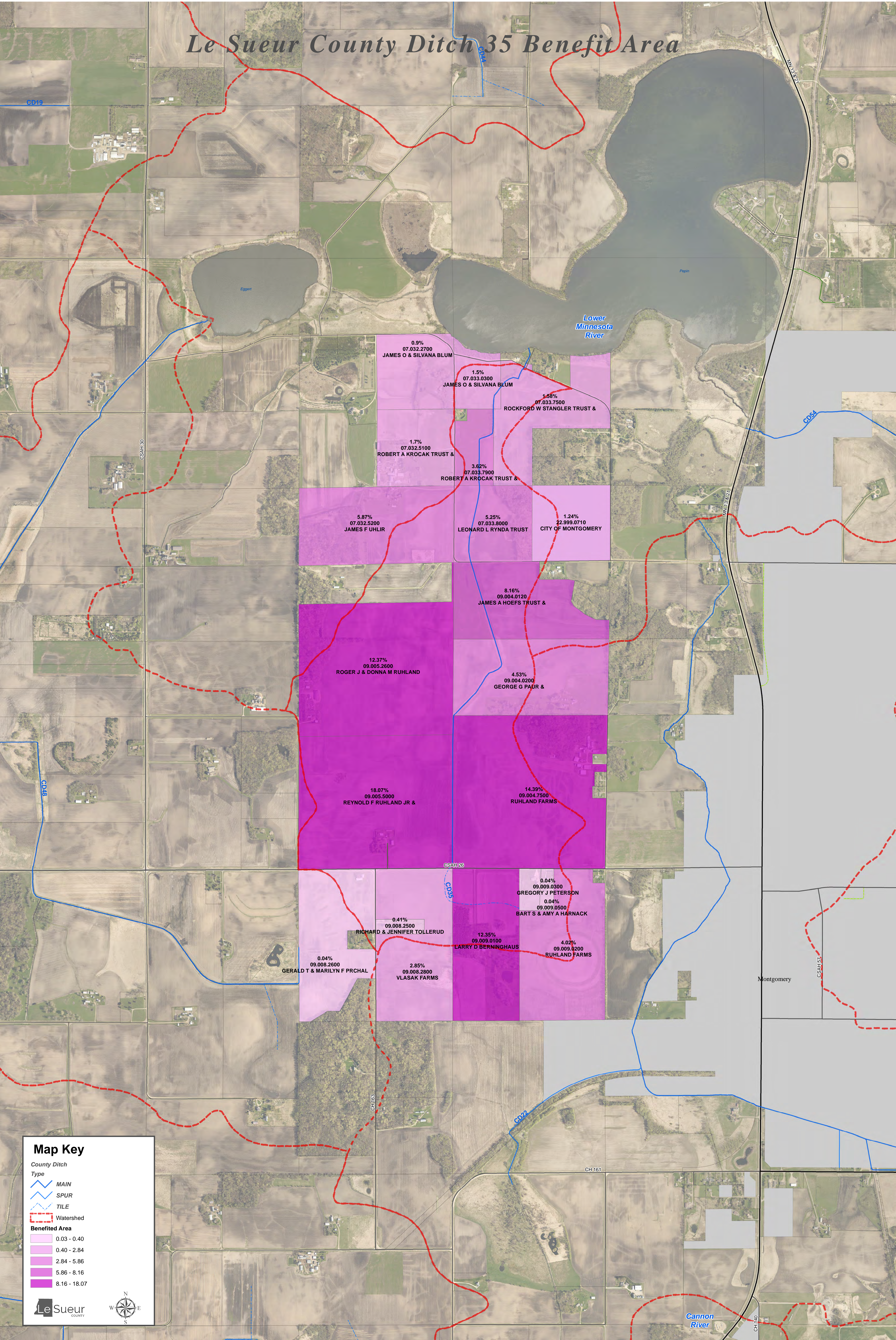
9:00 a.m. Le Sueur County Ditch 35 Informational Meeting

Staff Contact:

TIMELINE FOR COUNTY DITCH 35

7/21/1908	Petition for public ditch
4/15/1909	Viewers Report
5/17/1909	Order Establishing Ditch
7/26/1909	Lien
4/7/1909	Engineers Report
Nothing between 1909 – 1953	
8/4/1953	Petition for Improvement
2/17/1954	Engineer's Preliminary Report for Improvement
3/16/1954	Viewers appointed
5/5/1954	Engineer's Final Report
6/21/1954	Viewers Report
6/29/1954	Director's Final Report with amendment to Engineer's Final Report
8/27/1954	Second amendment to Engineer's Final Report
8/24/1954	Order for Improvement
11/15/1955	Lien (released 4/25/1966)
7/12/1976	Petitions for inclusion- Berninghaus, Ulhir, Ruhland Bros. and Sylvia Ruhland, Board approved 9/20/1976
9/16/1976	Lien (released 9/16/1976)
10/28/1976	Viewers Oath
1/11/1977	Culverts approved to be placed on Emma Pomije property
6/24/1977	Affidavit amending description in ditch lien – Paul Richter
8/15/1997	Lien (released 4/25/2001)
8/22/2006	Lien (released 1/7/2015)

Le Sueur County Ditch 35 Benefit Area



Map Key

County Ditch

Type

- MAIN
- SPUR
- TILE
- Watershed

Benefited Area

- 0.03 - 0.40
- 0.40 - 2.84
- 2.84 - 5.86
- 5.86 - 8.16
- 8.16 - 18.07

**Auditor's Tabular Assessment Statement *(1) For the Creation of a Fund to be used for the Repair of *(2) For the Repair of Le Sueur
County Ditch No. 35 in the County of Le Sueur Minnesota**

***If the lien is for the Creation of a fund to be used for repairs in the future strike out (2). If the lien is for repairs already made strike out (1).**

Names of the Owners of all Lands and the Names of all Public Roads, Corporate Roads and Railroads that are Assessed for the Repair of said Ditch.	Description of each Parcel of Land to be Assessed for the Repair of said Ditch as it Appears from Original Lien Statement for Construction of said Ditch.	Section	Township	Range	Number of acres in each tract according to assessment rolls and tax list.	Estimated number of acres benefited.	Amount that each tract of land and each public road, corp-orate road and rail-road was benefitted by the construction of said ditch.	Amount that each tract of land and each public road, corp-orate road and rail-road is liable for and must pay for the repair of such ditch.	
					Acres	Acres	Dollars	Dollars	
James O & Silvana Blum	SE 1/4 of NE 1/4	32	112	23	40.00	2.40	201.60	201.60	07.032.2700
Robert A & Elizabeth Krocak Trusts	NE 1/4 of SE 1/4	32	112	23	40.00	4.70	381.26	381.26	07.032.5100
James F Uhlir	S 1/2 of SE 1/4	32	112	23	80.00		1315.00	1,315.00	07.032.5200
James O & Silvana Blum	W 20 ac of Lot 2	33	112	23	20.00	4.00	336.00	336.00	07.033.0300
Robert A & Elizabeth Krocak Trusts	W 1/2 of NW 1/4 of SW 1/4 less 1 ac in NW cor	33	112	23	19.00	10.00	811.24	811.24	07.033.7900
Rockford & Carol Stangler Trusts	E 1/2 of NW 1/4 of SW 1/4	33	112	23	20.00	3.00	174.10	174.10	07.033.7500
Rockford & Carol Stangler Trusts	11 ac of GL #2	33	112	23	11.00	3.10	179.90	179.90	07.033.7500
Leonard L Rynda Trust	SW 1/4 of SW 1/4	33	112	23	40.00	19.00	1176.30	1,176.30	07.033.8000
Montgomery City	SE 1/4 of SW 1/4	33	112	23	40.00	5.60	276.80	276.80	22.999.0710
James A & Donna M Hoefs Trusts	N 1/2 of NW 1/4 less 18.21 ac	4	111	23	65.32	20.10	1828.80	1,828.80	09.004.0120
George G & Kenneth D Paur	SW 1/4 of NW 1/4	4	111	23	40.00	24.40	1015.70	1,015.70	09.004.0200
Ruhland Farms %Wm Ruhland	NW 1/4 of SW 1/4	4	111	23	40.00	20.80	1459.40	1,459.40	09.004.7500
Ruhland Farms %Wm Ruhland	SW 1/4 of SW 1/4	4	111	23	40.00	22.80	1365.00	1,365.00	09.004.7500
Ruhland Farms %Wm Ruhland	SE 1/4 of SW 1/4 less .58 ac	4	111	23	39.42	7.70	400.00	400.00	09.004.7500
Roger J & Donna Ruhland	S 1/2 of N 1/2 of NE 1/4	5	111	23	40.00		798.00	798.00	09.005.2600
Roger J & Donna Ruhland	S 1/2 of NE 1/4	5	111	23	80.00	26.20	1318.50	1,318.50	09.005.2600
Roger J & Donna Ruhland								654.65	09.005.2600
Le Sueur County	Reynold F & A E Ruhland Jr	5	111	23	20.00	10.55	654.65	654.65	09.005.2600

Reynold F & A E Ruhland Jr	S 120 ac of SE 1/4	5	111	23	120.00	57.10	3395.50	3,395.50	09.005.5000
Gerald T & Marilyn Prchal	NW 1/4 of NE 1/4 less 2.80 ac	8	111	23	37.20	0.30	10.00	10.00	09.008.2600
Vlasak Farms	NE 1/4 of NE 1/4 less 5 ac	8	111	23	35.00	9.89	637.95	637.95	09.008.2800
Richard A Tollerud et al	5 ac of NE 1/4 of NE 1/4	8	111	23	5.00	1.41	90.95	90.95	09.008.2500
Larry D Berninghaus	W 70 ac of NW 1/4	9	111	23	70.00		2767.00	2,767.00	09.009.0100
Ruhland Farms % Wm Ruhland	E 90 ac of NW 1/4 less W 600 ft of N 726 ft & less E 208.708 ft of N 241.708 ft	9	111	23	78.84		858.00	858.00	09.009.0200
Ruhland Farms % Wm Ruhland	NE 1/4 of NW 1/4 less 8.39 ac	9	111	23	31.61	4.70	42.08	42.08	09.009.0200
Bart & Amy Harnack	W 434 ft of N 726 ft of NE 1/4 of NW 1/4 less 3.50 ac	9	111	23	3.73	1.03	9.23	9.23	09.009.0500
Gregory J Peterson	That part of N 1/2 of NW 1/4 beg 892.21 ft W of N 1/4 cor of Sec 9, th W 220.30 ft, SW 650.43 ft, E 249.14 ft, N 650.02 ft to beg	9	111	23	3.50	0.97	8.69	8.69	09.009.0300
County of Le Sueur	State Aid Road #26	5	111	23			100.00	100.00	09.999.6302
County of Le Sueur	CSAH #142	4	111	23			142.00	142.00	09.999.6302
Grand Total:							22408.30	22408.30	

*Note-Added in 1976 per 12/20/76 meeting minutes



Le Sueur County, MN

Thursday, August 2, 2018

Board Meeting

Item 3

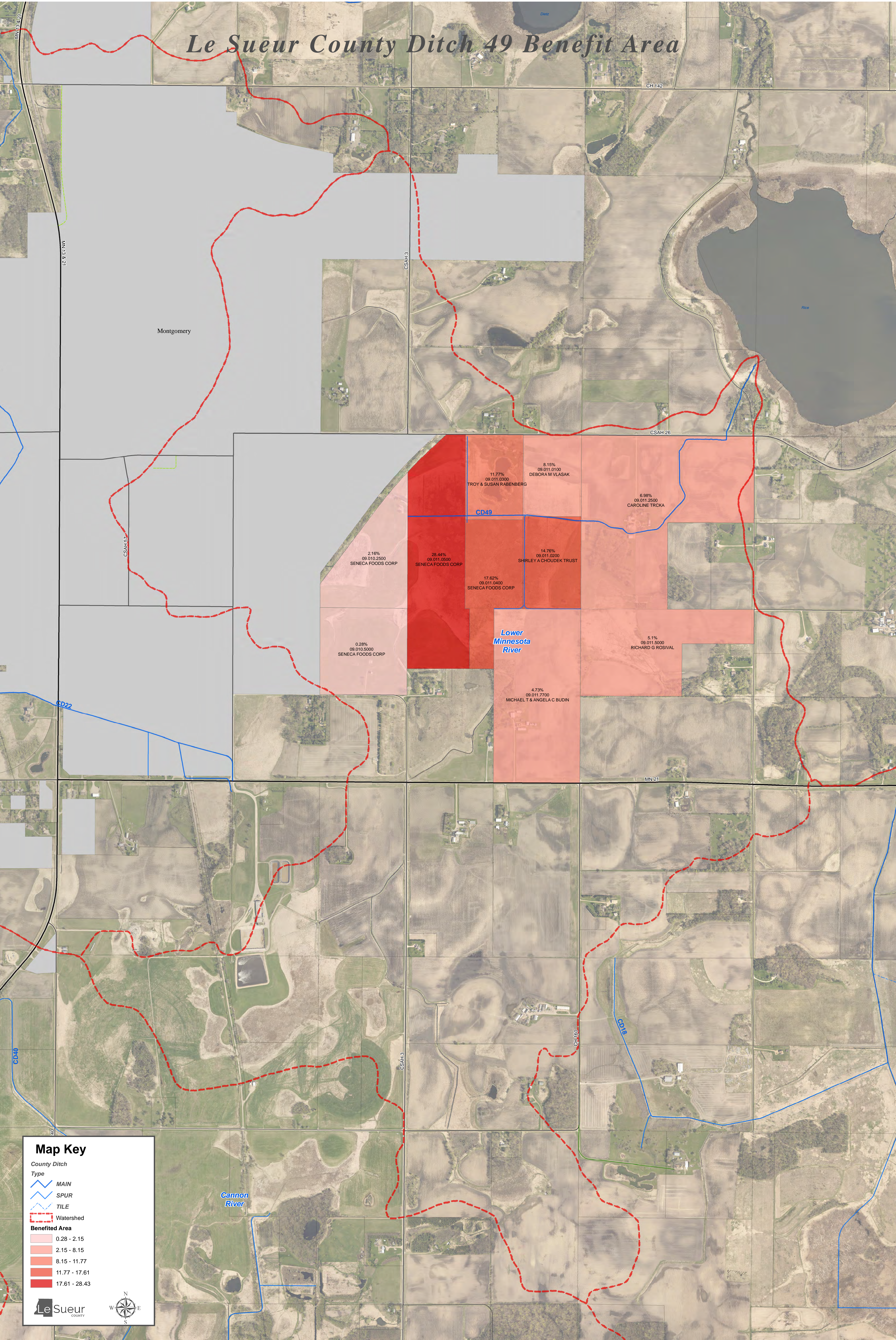
9:00 a.m. Le Sueur County Ditch 49 Informational Meeting

Staff Contact:

TIMELINE FOR COUNTY DITCH #49

9/3/1919	Petition
2/20/1920	Engineer's Preliminary Report
3/31/1920	Report of Engineer and viewers appointed
4/7/1920	Viewers Report
5/14/1920	Order Establishing Ditch
12/1/1920	Lien
6/27/1935	Cleaning and repair petition
4/2/1957	Board instructed ditch inspector to make a report on possible drainage improvement
10/15/1976	Lien
1/31/1980	Lien release (1980)
8/18/1982	Lien
4/14/1987	Lien release (1982)
2/28/1984	City of Montgomery petition to drain storm sewer water to ditch; construction of a lateral
4/9/1985	Order on Petition
6/20/1985	Viewers appointed
9/17/1985	Viewers Report adopted

*No paper files 1985-2017



Auditor's Tabular Assessment Statement *(1) For the Creation of a Fund to be used for the Repair of *(2) For the Repair of County

Ditch No. # 49 in the County of Le Sueur Minnesota

***If the lien is for the Creation of a fund to be used for repairs in the future strike out (2). If the lien is for repairs already made strike out (1).**

Names of the Owners of all Lands and the Names of all Public Roads, Corporate Roads and Railroads that are Assessed for the Repair of said Ditch.	Description of each Parcel of Land to be Assessed for the Repair of said Ditch as it Appears from Original Lien Statement for Construction of said Ditch.	Section	Township	Range	Number of acres in each tract according to assessment rolls and tax list.	Estimated number of acres benefited.	Amount that each tract of land and each public road, corp-orate road and rail-road was benefitted by the construction of said ditch.	Amount that each tract of land and each public road, corp-orate road and rail-road is liable for and must pay for the repair of such ditch.	
					Acres	Acres	Dollars	Dollars	
Seneca Foods Corp	NE 1/4 of SE 1/4	10	111	23	40.00	0.92	59.80	32.89	09.010.5000
Seneca Foods Corp	SE 1/4 of NE 1/4 less RR & less that part W of RR	10	111	23	30.20	2.90	211.00	116.05	09.010.2500
Seneca Foods Corp	That part of NE 1/4 of NE 1/4 E of RR	10	111	23	8.70	2.75	247.50	136.13	09.010.2500
Seneca Foods Corp	N 917 ft of W 951 ft of W 1/2 of SW 1/4	11	111	23	20.00	5.40	596.00	327.80	09.011.0500
Seneca Foods Corp	S 1/2 of W 52.75 ac of NW 1/4	11	111	23	26.37	25.90	2878.50	1583.18	09.011.0500
Seneca Foods Corp	N 916.88 ft of E 369.92 ft of W 1/2 of SW 1/4	11	111	23	7.11	2.75	303.75	167.06	09.011.0400
Seneca Foods Corp	S 27 ac of E 52.75 ac of W 107 ac of NW 1/4	11	111	23	27.00	27.00	3442.50	1893.38	09.011.0400
Michael T & Angela C Budin	E 1/2 of SW 1/4	11	111	23	80.00	9.60	1006.50	553.57	09.011.7700
Richard G. Rosival	N 1/2 of SE 1/4 less 20 ac	11	111	23	60.00	14.00	1085.00	596.75	09.011.5000
Caroline Trcka	W 1/2 of NE 1/4	11	111	23	80.00	16.50	1485.00	816.75	09.011.2500
Troy & Susan Rabenberg	N 25.75 ac of E 52.75 ac of W 107 ac of NW 1/4	11	111	23	25.75	20.25	2503.75	1377.06	09.011.0300
Shirley Choudek Trust	S 28.37 ac of E 53.33 ac of NW 1/4	11	111	23	28.37	28.37	3137.55	1725.65	09.011.0200
Debora M Vlasak	Cartway over N 25 ac of E 53 ac of NW 1/4	11	111	23	0.48	0.48	55.20	30.36	09.011.0100
Debora M Vlasak	N 25 ac of E 53.33 ac of NW 1/4	11	111	23	24.96	15.25	1678.75	923.31	09.011.0100
Seneca Foods Corp	N 1/2 of W 52.75 ac of NW 1/4	11	111	23	26.37	21.50	2572.50	1414.88	09.011.0500
					Total		21263.30	11694.82	



Le Sueur County, MN

Thursday, August 2, 2018

Board Meeting

Item 4

9:30 a.m. Le Sueur - Rice County Joint Ditch 54 Meeting

Staff Contact:



REDERMINATION OF BENEFITS ON LE SUEUR COUNTY DITCH 54

H2Over Viewers was appointed by Le Sueur County on January 23, 2018 for the Redetermination of Benefits on County Ditch 54. When we began the process of viewing, we noticed the drainage area extended into Rice County. When we noticed acres in Rice, we noticed they would also be charged drainage benefits for use of CD 54. We then sent a letter on May 31, 2018 to Le Sueur County addressing our findings (see attached Exhibit 1). Upon further examination, we determined that the majority of the land is located in Le Sueur County. Also attached, please find a map of the watershed boundary for CD 54 (Exhibit 2).



May 31, 2018

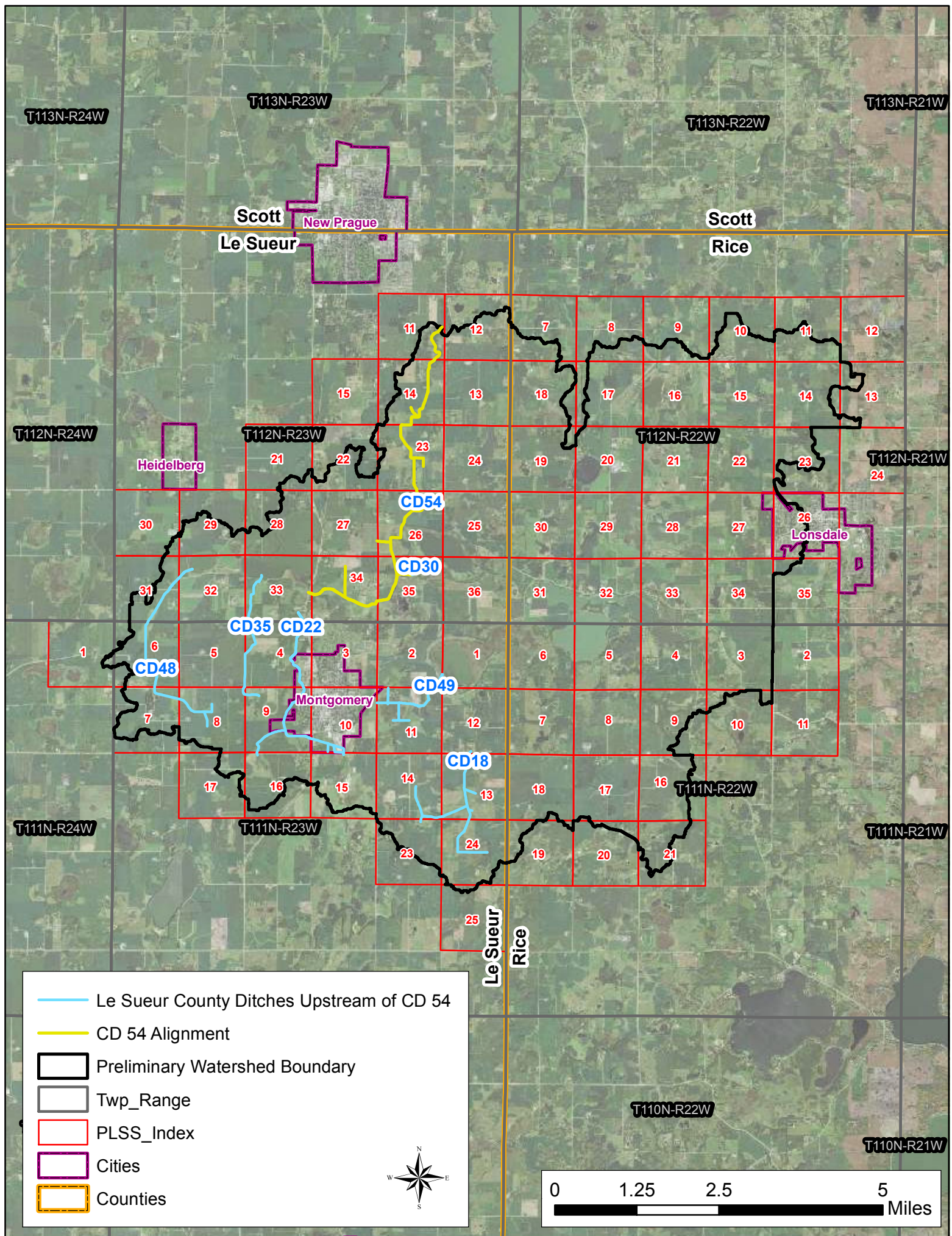
Re: La Sueur County CD 54

To Le Sueur County Auditors:

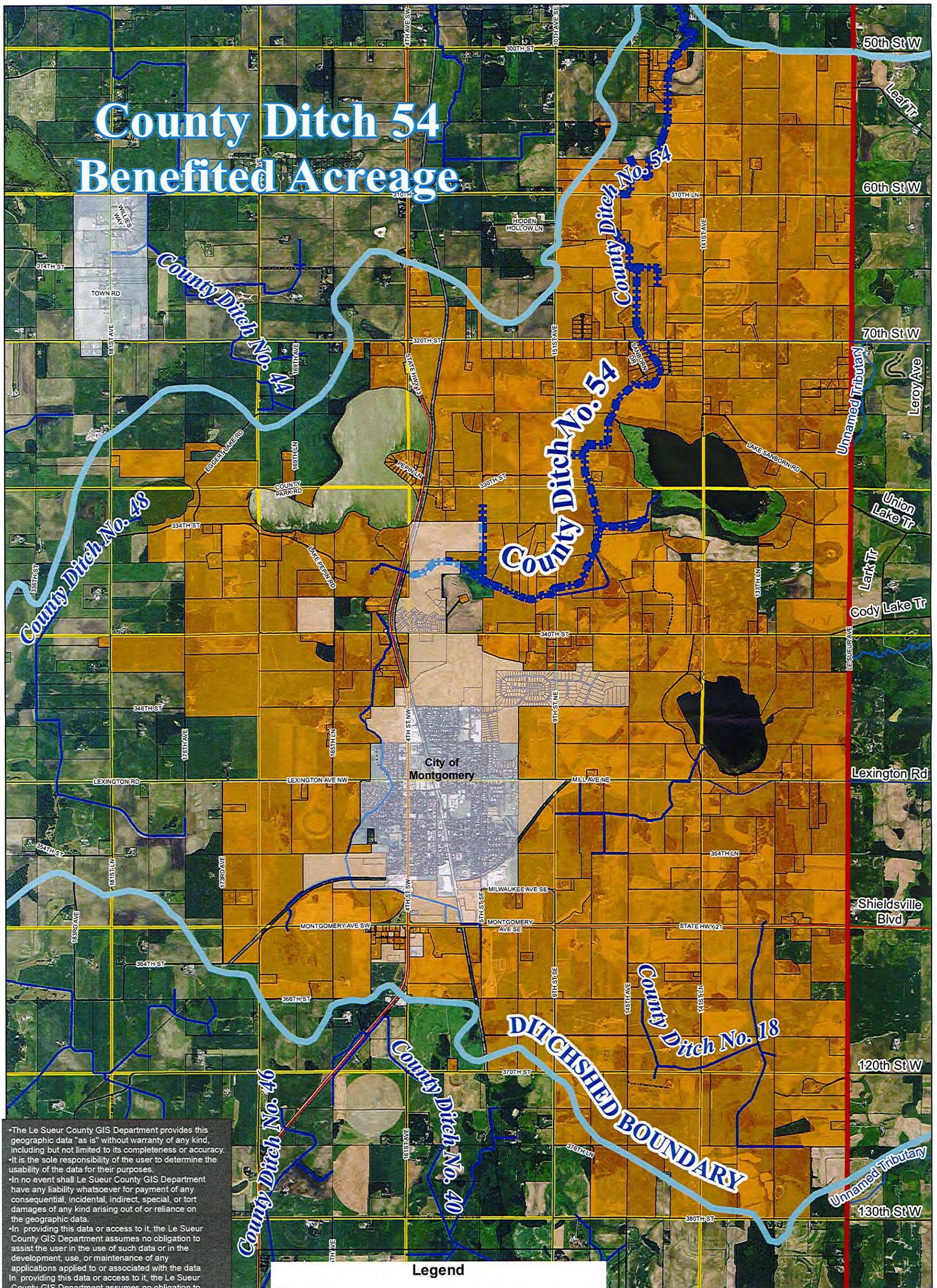
We were appointed to conduct a redetermination of benefits of Le Sueur County Ditch 54. During our viewing we have determined that land in Rice County is benefitted. We will stop our work until a Joint Le Sueur-Rice County Drainage Authority can be established.

Sincerely,

Bryan Murphy
Lead Viewer
H2Over Viewers, LLC



County Ditch 54 Benefited Acreage



The Le Sueur County GIS Department provides this geographic data "as is" without warranty of any kind, including but not limited to its completeness or accuracy. It is the sole responsibility of the user to determine the usability of the data for their purposes. In no event shall Le Sueur County GIS Department have any liability whatsoever for payment of any consequential, incidental, indirect, special, or tort damages of any kind arising out of or reliance on the geographic data. In providing this data or access to it, the Le Sueur County GIS Department assumes no obligation to assist the user in the use of such data or in the development, use, or maintenance of any applications applied to or associated with the data. In providing this data or access to it, the Le Sueur County GIS Department assumes no obligation to assist the user in the use of such data or in the development, use, or maintenance of any applications applied to or associated with the data.



Coordinate System: NAD 1983 HARN Adj MN Le Sueur Feet
Created By: Le Sueur County GIS Department
Kayla Wagner, GIS Specialist - kwagner@co.le-sueur.mn.us
3/23/2015

Legend

	CD 54 Watershed Boundary	Roads		State/Federal Hwy
	County Ditch 54			County Hwy
	CD 54 Benefited Acreage			Township Rd
	Le Sueur County Ditches			Municipal St
	County Line			Other
	Rice County Stream			Private
	City Boundary			
	Section Line			

1 inch equals 0.6 miles

0 0.225 0.45 0.9 1.35 1.8 Miles



County Ditch 54 Benefited Acreage



Legend

- CD 54 Watershed Boundary
- County Ditch 54
- CD 54 Benefited Acreage
- Le Sueur County Ditches
- County Line
- Rice County Stream
- City Boundary
- Section Line

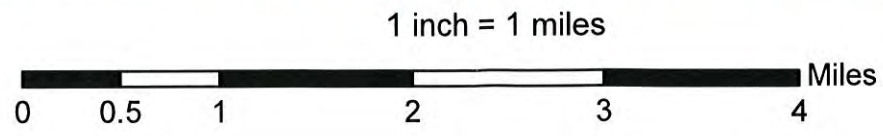
Roads

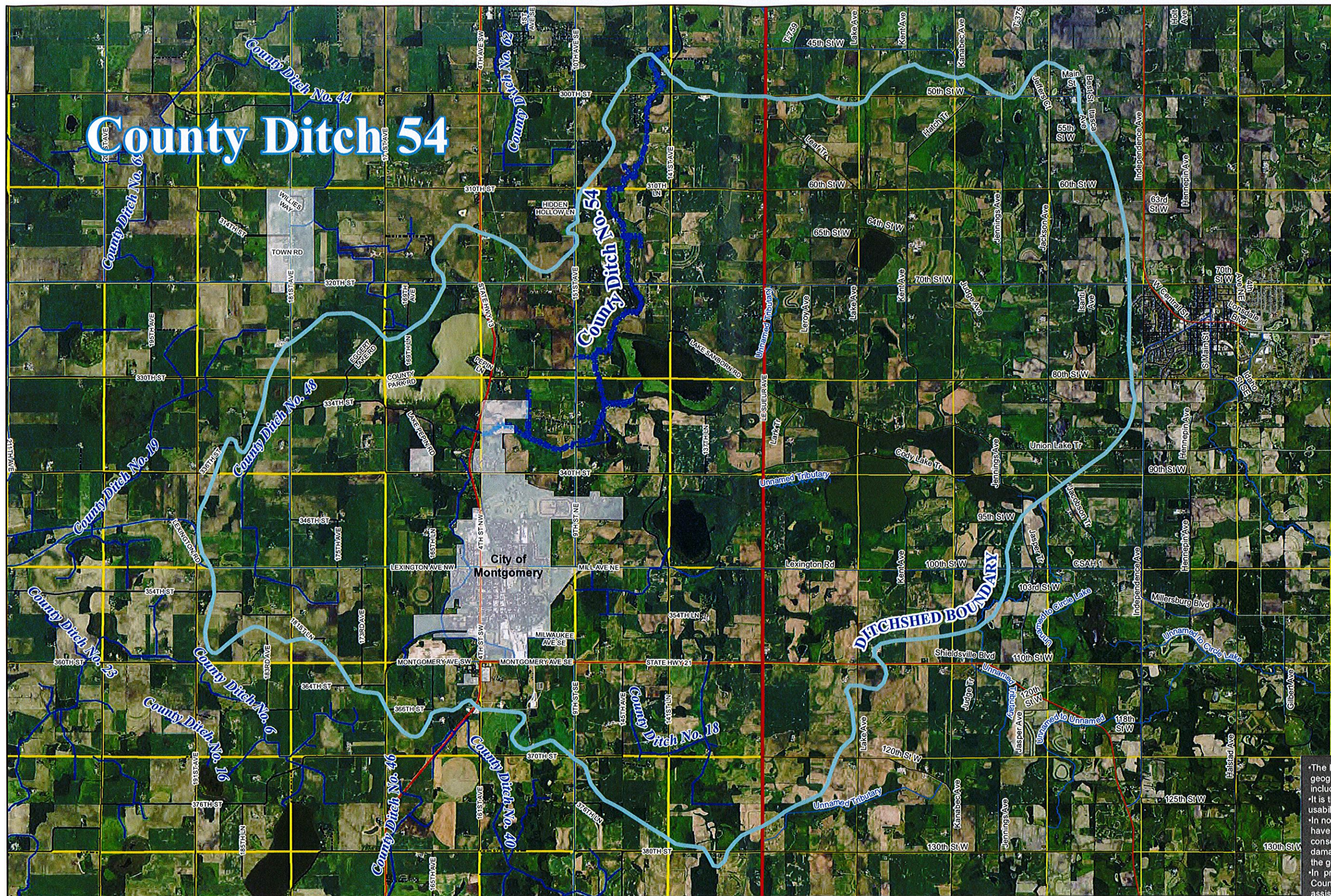
- State/Federal Hwy
- County Hwy
- Township Rd
- Municipal St
- Other
- Private



The Le Sueur County GIS Department provides this geographic data "as is" without warranty of any kind, including but not limited to its completeness or accuracy. It is the sole responsibility of the user to determine the usability of the data for their purposes. In no event shall Le Sueur County GIS Department have any liability whatsoever for payment of any consequential, incidental, indirect, special, or tort damages of any kind arising out of or reliance on the geographic data. In providing this data or access to it, the Le Sueur County GIS Department assumes no obligation to assist the user in the use of such data or in the development, use, or maintenance of any applications applied to or associated with the data. In providing this data or access to it, the Le Sueur County GIS Department assumes no obligation to assist the user in the use of such data or in the development, use, or maintenance of any applications applied to or associated with the data.

Coordinate System: NAD 1983 HARN Adj MN Le Sueur Feet
Created By: Le Sueur County GIS Department
Kayla Wagner, GIS Specialist - kwagner@co.le-sueur.mn.us
3/23/2015





Legend

- CD 54 Watershed Boundary
- County Ditch 54
- Le Sueur County Ditches
- County Line
- Rice County Stream
- City Boundary
- Section Line

Roads

- State/Federal Hwy
- County Hwy
- Township Rd
- Municipal St
- Other
- Private



The Le Sueur County GIS Department provides this geographic data "as is" without warranty of any kind, including but not limited to its completeness or accuracy. It is the sole responsibility of the user to determine the usability of the data for their purposes. In no event shall Le Sueur County GIS Department have any liability whatsoever for payment of any consequential, incidental, indirect, special, or tort damages of any kind arising out of or reliance on the geographic data. In providing this data or access to it, the Le Sueur County GIS Department assumes no obligation to assist the user in the use of such data or in the development, use, or maintenance of any applications applied to or associated with the data. In providing this data or access to it, the Le Sueur County GIS Department assumes no obligation to assist the user in the use of such data or in the development, use, or maintenance of any applications applied to or associated with the data.

Coordinate System: NAD 1983 HARN Adj MN Le Sueur Feet
 Created By: Le Sueur County GIS Department
 Kayla Wagner, GIS Specialist - kwagner@co.le-sueur.mn.us
 3/23/2015

