



---

# **Le Sueur County, MN**

**Thursday, August 2, 2018**

**Board Meeting**

## **Item 4**

**9:30 a.m. Le Sueur - Rice County Joint Ditch 54 Meeting**

**Staff Contact:**



## REDERMINATION OF BENEFITS ON LE SUEUR COUNTY DITCH 54

H2Over Viewers was appointed by Le Sueur County on January 23, 2018 for the Redetermination of Benefits on County Ditch 54. When we began the process of viewing, we noticed the drainage area extended into Rice County. When we noticed acres in Rice, we noticed they would also be charged drainage benefits for use of CD 54. We then sent a letter on May 31, 2018 to Le Sueur County addressing our findings (see attached Exhibit 1). Upon further examination, we determined that the majority of the land is located in Le Sueur County. Also attached, please find a map of the watershed boundary for CD 54 (Exhibit 2).



May 31, 2018

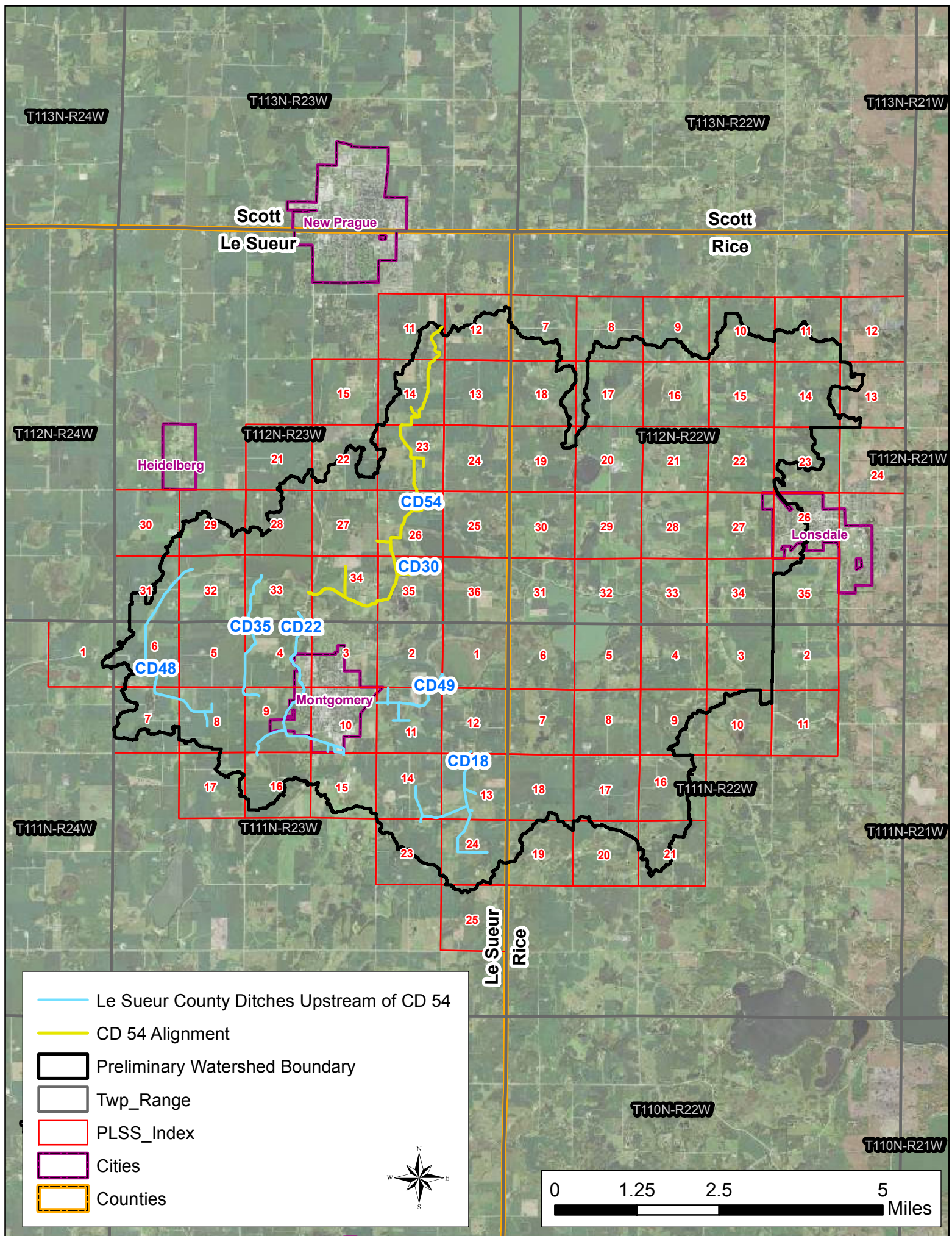
Re: La Sueur County CD 54

To Le Sueur County Auditors:

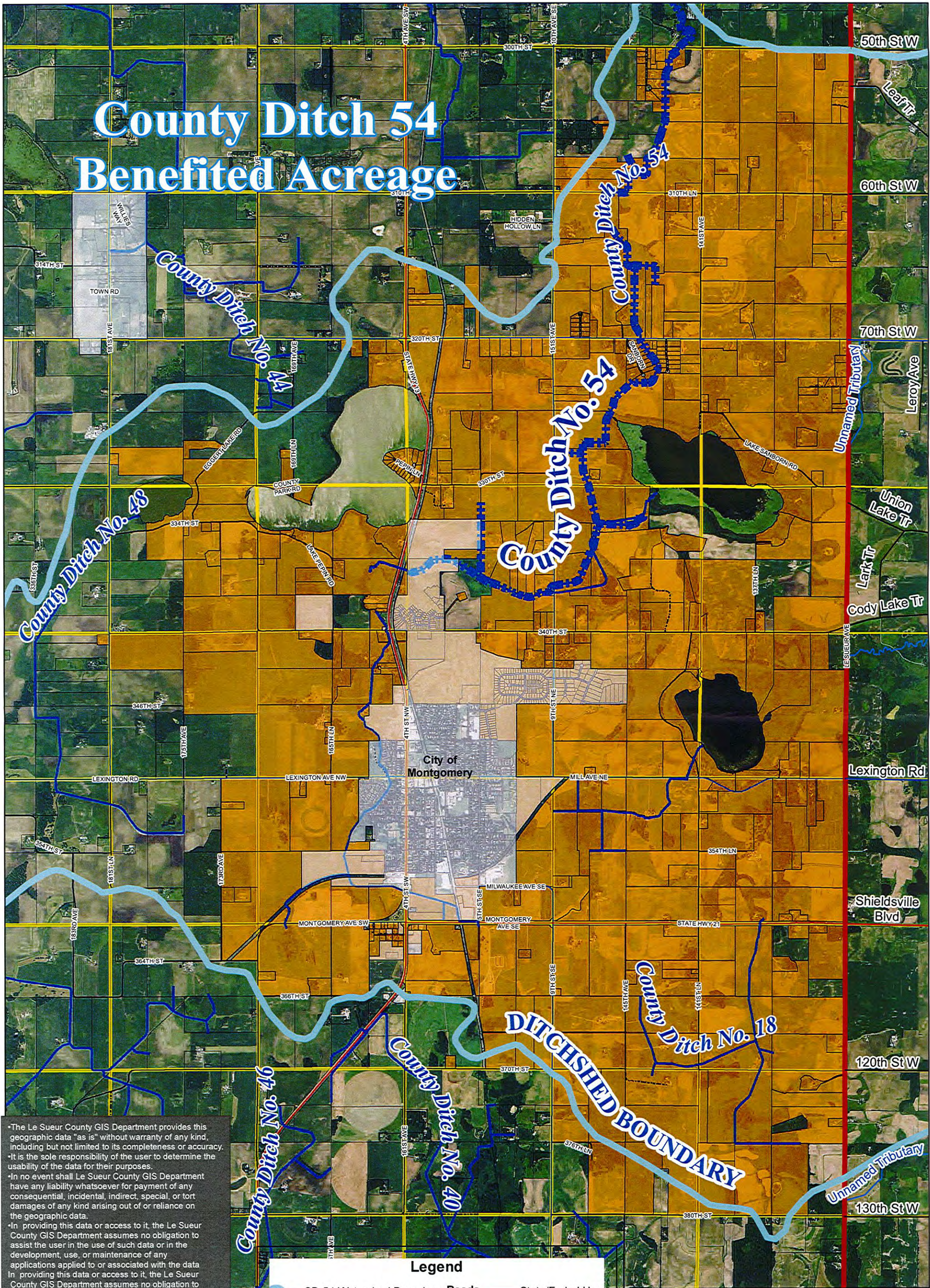
We were appointed to conduct a redetermination of benefits of Le Sueur County Ditch 54. During our viewing we have determined that land in Rice County is benefitted. We will stop our work until a Joint Le Sueur-Rice County Drainage Authority can be established.

Sincerely,

Bryan Murphy  
Lead Viewer  
H2Over Viewers, LLC







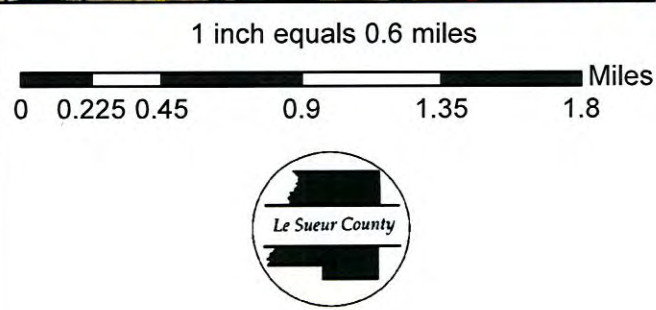
The Le Sueur County GIS Department provides this geographic data "as is" without warranty of any kind, including but not limited to its completeness or accuracy. It is the sole responsibility of the user to determine the usability of the data for their purposes. In no event shall Le Sueur County GIS Department have any liability whatsoever for payment of any consequential, incidental, indirect, special, or tort damages of any kind arising out of or reliance on the geographic data. In providing this data or access to it, the Le Sueur County GIS Department assumes no obligation to assist the user in the use of such data or in the development, use, or maintenance of any applications applied to or associated with the data. In providing this data or access to it, the Le Sueur County GIS Department assumes no obligation to assist the user in the use of such data or in the development, use, or maintenance of any applications applied to or associated with the data.



Coordinate System: NAD 1983 HARN Adj MN Le Sueur Feet  
Created By: Le Sueur County GIS Department  
Kayla Wagner, GIS Specialist - kwagner@co.le-sueur.mn.us  
3/23/2015

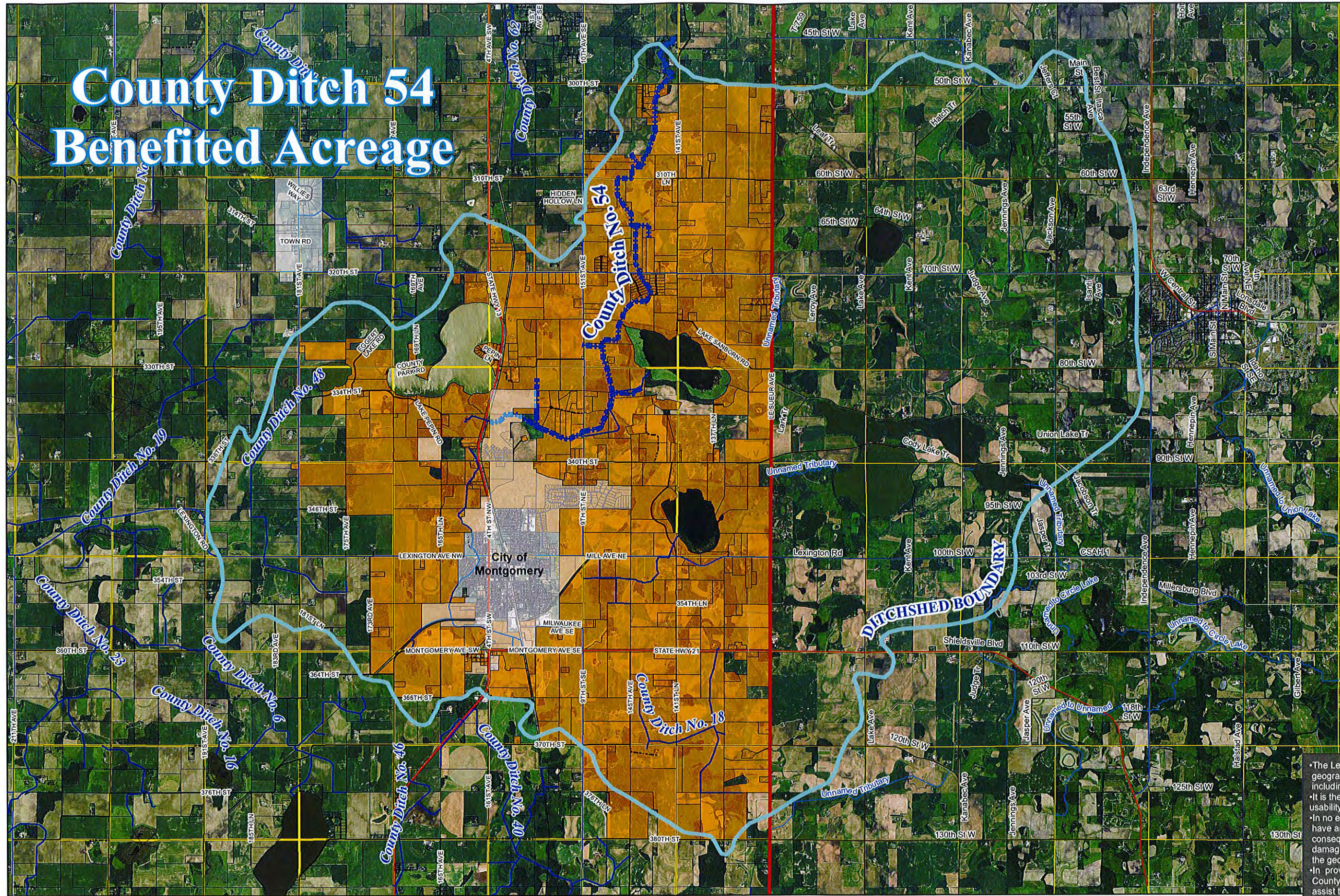
# Legend

	CD 54 Watershed Boundary	<b>Roads</b>		State/Federal Hwy
	County Ditch 54			County Hwy
	CD 54 Benefited Acreage			Township Rd
	Le Sueur County Ditches			Municipal St
	County Line			Other
	Rice County Stream			Private
	City Boundary			
	Section Line			





# County Ditch 54 Benefited Acreage



**Legend**

- CD 54 Watershed Boundary
- County Ditch 54
- CD 54 Benefited Acreage
- Le Sueur County Ditches
- County Line
- Rice County Stream
- City Boundary
- Section Line

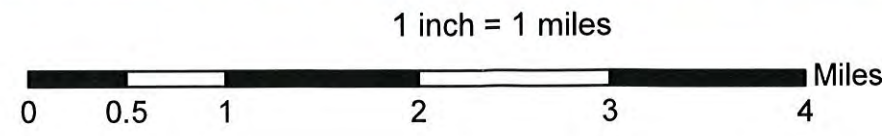
**Roads**

- State/Federal Hwy
- County Hwy
- Township Rd
- Municipal St
- Other
- Private

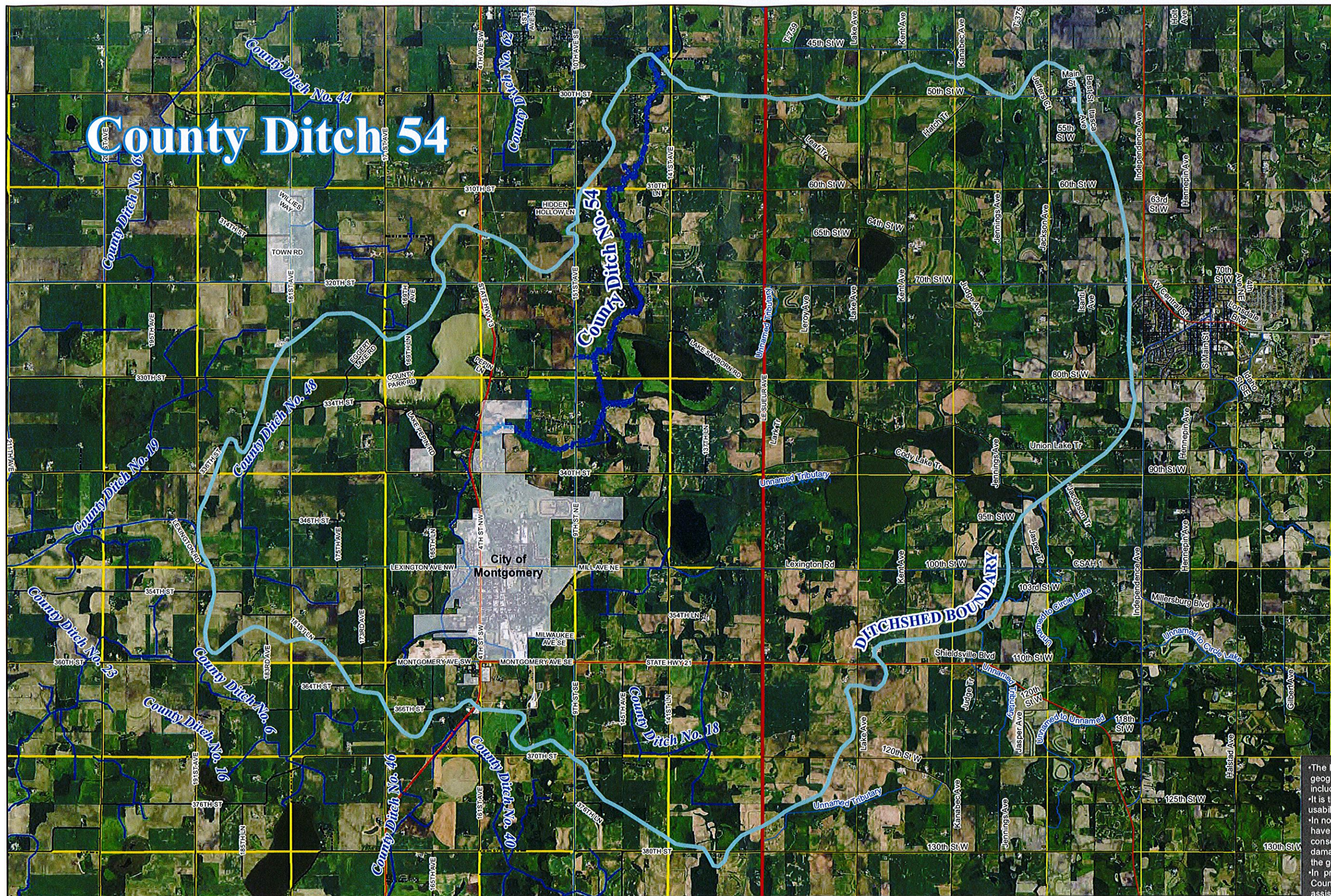


The Le Sueur County GIS Department provides this geographic data "as is" without warranty of any kind, including but not limited to its completeness or accuracy. It is the sole responsibility of the user to determine the usability of the data for their purposes. In no event shall Le Sueur County GIS Department have any liability whatsoever for payment of any consequential, incidental, indirect, special, or tort damages of any kind arising out of or reliance on the geographic data. In providing this data or access to it, the Le Sueur County GIS Department assumes no obligation to assist the user in the use of such data or in the development, use, or maintenance of any applications applied to or associated with the data. In providing this data or access to it, the Le Sueur County GIS Department assumes no obligation to assist the user in the use of such data or in the development, use, or maintenance of any applications applied to or associated with the data.

Coordinate System: NAD 1983 HARN Adj MN Le Sueur Feet  
Created By: Le Sueur County GIS Department  
Kayla Wagner, GIS Specialist - kwagner@co.le-sueur.mn.us  
3/23/2015







**Legend**

- CD 54 Watershed Boundary
- County Ditch 54
- Le Sueur County Ditches
- County Line
- Rice County Stream
- City Boundary
- Section Line

**Roads**

- State/Federal Hwy
- County Hwy
- Township Rd
- Municipal St
- Other
- Private



The Le Sueur County GIS Department provides this geographic data "as is" without warranty of any kind, including but not limited to its completeness or accuracy. It is the sole responsibility of the user to determine the usability of the data for their purposes. In no event shall Le Sueur County GIS Department have any liability whatsoever for payment of any consequential, incidental, indirect, special, or tort damages of any kind arising out of or reliance on the geographic data. In providing this data or access to it, the Le Sueur County GIS Department assumes no obligation to assist the user in the use of such data or in the development, use, or maintenance of any applications applied to or associated with the data. In providing this data or access to it, the Le Sueur County GIS Department assumes no obligation to assist the user in the use of such data or in the development, use, or maintenance of any applications applied to or associated with the data.

Coordinate System: NAD 1983 HARN Adj MN Le Sueur Feet  
 Created By: Le Sueur County GIS Department  
 Kayla Wagner, GIS Specialist - kwagner@co.le-sueur.mn.us  
 3/23/2015

