



Le Sueur County, MN

Tuesday, April 10, 2018

Board Meeting

Item 8

CD44

RE: Recommend a 195% lien in the amount of \$102,569.54 to be spread over 8 years beginning with taxes payable in 2019. The interest rate is 4% with a \$10.00 minimum and \$100 or less to be paid in one installment. The lien will be filed December 14, 2018.

RE: Timeline

RE: Redetermination of Benefits Discussion

Staff Contact:

Ditch # 44
Last Lien 2011

Balance as of 2/14/18

AMOUNT
- 50,797.¹⁸

EXPENSES:

AMOUNT

I + S Group (Prof. Serv.)	<u>53,701.⁰⁰</u>
Houston Engineering (software maint/dgite base fee)	<u>236.⁶⁴</u>
SWCD (Inspectors)	<u>1,285.⁴³</u>
Benville County (Share - Ditch Viewer Prog)	<u>16.⁴⁰</u>
Rinke - Noonan (Drainage Retainer/Issues)	<u>2,473.⁸¹</u>
Braith EXCV. (culvert)	<u>1445.⁰⁰</u>
Contech (culvert)	<u>1441.⁰⁸</u>
Scotts Helicopter (Spraying)	<u>1,223.⁵²</u>
Selly EXCV. (culvert)	<u>3,175.⁰⁰</u>
MISC (Publish, Record, Lien)	<u>6,097.³⁷</u>

TOTAL

71,095.²⁵

71095.²⁵ / 7 yrs =

10,156.⁴⁶ / yr x 5 yrs =

50782.³⁰

50797.¹⁸

* 10,579.⁴⁸

Recommend 8 yrs
@ 4% Int, \$10 min.

Base
52541.⁰⁰ 195 %

Total
102454.⁹⁵

Diff.
875.⁴⁷

* has projects in review by Soil + Water
(no cost estimate)

**Auditor's Tabular Assessment Statement *(1) For the Creation of a Fund to be used for the Repair of *(2) For the Repair of Le Sueur
County Ditch No. 44 in the County of Le Sueur Minnesota**

***If the lien is for the Creation of a fund to be used for repairs in the future strike out (2). If the lien is for repairs already made strike out (1).**

Names of the Owners of all Lands and the Names of all Public Roads, Corporate Roads and Railroads that are Assessed for the Repair of said Ditch.	Description of each Parcel of Land to be Assessed for the Repair of said Ditch as it Appears from Original Lien Statement for Construction of said Ditch.	Section	Township	Range	Number of acres in each tract according to assessment rolls and tax list.	Estimated number of acres benefited.	Amount that each tract of land and each public road, corp-orate road and rail-road was benefitted by the construction of said ditch.	Amount that each tract of land and each public road, corp-orate road and rail-road is liable for and must pay for the repair of such ditch.	Board Meeting - April 10, 2018 195% Lien 4% Interest 8 years Filed - December 14, 2018
					Acres	Acres	Dollars	Dollars	
Brian C Jahn Family LP	14.33 ac of NW 1/4 of SE 1/4	7	112	23	14.33	14.00	252.00	491.40	07.007.5000
John V & Rosemary Widmer Rev Trusts	NE 1/4 of SE 1/4	7	112	23	40.00	34.00	529.00	1,031.55	07.007.5110
John V & Rosemary Widmer Rev Trusts	SE 1/4 of SE 1/4	7	112	23	40.00	38.00	1368.00	2,667.60	07.007.5110
D & D Meyer, Inc	SW 1/4 of SW 1/4 less 13.06 ac	8	112	23	26.94	26.94	155.30	302.84	07.008.7500
Thomas E & Christine Michel	5 ac of SW 1/4 of SW 1/4	8	112	23	5.00	5.00	28.83	56.22	07.008.7600
Kenneth & Alice Doolittle	That part of SW 1/4 of SW 1/4 beg 1009.67 ft N of SW cor of Sec 8, th E 825.78 ft, N 157.27 ft, E 491.55 ft, N 164.62 ft, W 1318.81 ft, S 325.10 ft to beg	8	112	23	8.06	2.06	11.87	23.15	07.008.7700
D & D Meyer, Inc	SE 1/4 of SW 1/4	8	112	23	40.00	30.00	184.00	358.80	07.008.7500
D & A Meyer Farms, Inc	SW 1/4 of SE 1/4 less 11.13 ac	8	112	23	28.87	18.87	803.23	1,566.30	07.008.5100
James J & Elizabeth Jilek	11.13 ac of SW 1/4 of SE 1/4	8	112	23	11.13	11.13	473.77	923.85	07.008.5150
James J & Elizabeth Jilek	4.37 ac of W 1/2 of SE 1/4 of SE 1/4	8	112	23	4.37	4.37	45.45	88.63	07.008.5150
D & A Meyer Farms, Inc	W 1/2 of SE 1/4 of SE 1/4 less 4.37 ac	8	112	23	15.63	5.63	58.55	114.17	07.008.5100
James J & Elizabeth Jilek	S 33 ft of E 1/2 of SE 1/4 of SE 1/4	8	112	23	0.50	0.50	1.50	10.00	07.008.5150
Timothy & Jody O'Loughlin	S 17.85 ac of E 1/2 of SE 1/4 of SE 1/4	8	112	23	17.85	4.50	13.50	26.33	07.008.5020
D & A Meyer Farms, Inc	NW 1/4 of NW 1/4 less 4.64 ac	17	112	23	35.36	33.59	472.91	922.17	07.017.0400
Timothy J & Dawn Meyer	4.64 ac of NW 1/4 of NW 1/4	17	112	23	4.64	4.41	62.09	121.08	07.017.0500
D & A Meyer Farms, Inc	NE 1/4 of NW 1/4	17	112	23	40.00	40.00	585.00	1,140.75	07.017.0400
D & A Meyer Farms, Inc	N 1/2 of SW 1/4 of NW 1/4 less 8.61 ac	17	112	23	11.39	10.82	173.69	338.70	07.017.0400

Michael Roger Meyer	That part of N 3/4 of NW 1/4 beg 656.20 ft N of W 1/4 cor of Sec, th N 588 ft, E 458.48 ft, S 588 ft, W 458.48 ft to beg	17	112	23	6.18	5.87	94.23	183.75	07.017.0100
Timothy J & Dawn Meyer	.90 ac of N 1/2 of SW 1/4 of NW 1/4	17	112	23	0.90	0.86	13.80	26.91	07.017.0500
Michael Roger Meyer	That part of N 3/4 of NW 1/4 beg 656.20 ft N & 458.48 ft E of W 1/4 cor of Sec 17, th E 113.41 ft, N 588 ft, W 113.40 ft, S 588 ft to beg	17	112	23	1.53	1.45	23.28	45.40	07.017.0600
D & A Meyer Farms, Inc	N 1/2 of SE 1/4 of NW 1/4	17	112	23	20.00	20.00	645.00	1,257.75	07.017.0400
Robert L Ruehling	3.92 ac of S 1/2 of SW 1/4 of NW 1/4	17	112	23	3.92	0.66	1.98	10.00	07.017.0200
Robert & Diana Widmer	14.34 ac of S 1/2 of SW 1/4 of NW 1/4	17	112	23	14.34	14.34	43.02	83.89	07.017.0220
Robert L Ruehling	.77 ac of S 1/2 of SE 1/4 of NW 1/4	17	112	23	0.77	0.77	11.32	22.07	07.017.0200
Robert L Ruehling	2.54 ac of S 1/2 of SE 1/4 of NW 1/4 in NE cor	17	112	23	2.54	2.54	37.34	72.81	07.017.0210
Robert & Diana Widmer	16.69 ac of S 1/2 of SE 1/4 of NW 1/4	17	112	23	16.69	16.69	245.34	478.41	07.017.0220
Anthony J & Desiree Ferrazzo	N 280 ft of W 543 ft of SW 1/4	17	112	23	3.49	1.00	3.00	10.00	07.017.7600
Rebecca Wilbur	6.42 ac of NW 1/4 of SW 1/4	17	112	23	6.42	5.70	17.10	33.35	07.017.7675
Michael Prouix & Olivia Giese	8.50 ac of NW 1/4 of SW 1/4	17	112	23	8.50	7.54	22.62	44.11	07.017.7700
D & A Meyer Farms, Inc	NW 1/4 of SW 1/4 less 22.26 ac	17	112	23	17.77	15.76	47.28	92.20	07.017.7500
D & A Meyer Farms, Inc	NE 1/4 of SW 1/4 W of CL of CD #44	17	112	23	32.50	32.50	1027.81	2,004.23	07.017.7500
Timothy & Jody O'Loughlin	NE 1/4 of SW 1/4 E of CL of CD #44	17	112	23	7.50	7.50	237.19	462.52	07.017.5100
D & A Meyer Farms, Inc	SW 1/4 of SW 1/4	17	112	23	40.00	34.00	804.00	1,567.80	07.017.7500
D & A Meyer Farms, Inc	SE 1/4 of SW 1/4 W of CL of CD #44	17	112	23	28.50	28.50	1252.58	2,442.53	07.017.7500
Timothy & Jody O'Loughlin	SE 1/4 of SW 1/4 E of CL of CD #44	17	112	23	11.50	11.50	505.42	985.57	07.017.5100
Timothy & Jody O'Loughlin	NW 1/4 of NE 1/4	17	112	23	40.00	40.00	3981.00	7,762.95	07.017.2800
Timothy & Jody O'Loughlin	NE 1/4 of NE 1/4 less 6.71ac	17	112	23	33.29	24.97	367.06	715.77	07.017.2800
Steven A & Jenean Erickson	.29 ac of NE 1/4 of NE 1/4	17	112	23	0.29	0.22	3.23	10.00	07.017.2600
Evelyn A Moore	4.9 ac of NE 1/4 of NE 1/4	17	112	23	4.90	3.67	53.95	105.20	07.017.2500
Steven A & Jenean Erickson	1.52 ac of NE 1/4 of NE 1/4	17	112	23	1.52	1.14	16.76	32.68	07.017.2600
Timothy & Jody O'Loughlin	N 1/2 of SW 1/4 of NE 1/4	17	112	23	20.00	20.00	1384.00	2,698.80	07.017.2800
Timothy & Jody O'Loughlin	N 1/2 of SE 1/4 of NE 1/4	17	112	23	20.00	15.00	186.00	362.70	07.017.2800
Timothy & Jody O'Loughlin	S 1/2 of SW 1/4 of NE 1/4	17	112	23	20.00	20.00	703.00	1,370.85	07.017.2700
Timothy & Jody O'Loughlin	S 1/2 of SE 1/4 of NE 1/4	17	112	23	20.00	15.00	805.00	1,569.75	07.017.2700
Timothy & Jody O'Loughlin	NW 1/4 of SE 1/4	17	112	23	40.00	40.00	120.00	234.00	07.017.2700
Timothy & Jody O'Loughlin	NE 1/4 of SE 1/4 less 3.46 ac	17	112	23	36.54	27.17	81.51	158.94	07.017.2700
Todd W & Jennifer K Boulden	That part of SE 1/4 beg 1322.49 ft N & 264 ft W of SE cor of Sec 17, th W 265 ft, N 165 ft, E 265 ft, S 165 ft to beg	17	112	23	1.00	0.74	2.22	10.00	07.017.5500
Todd W & Jennifer K Boulden	That part of SE 1/4 beg 1322.49 ft N & 529 ft W of SE cor of Sec 17, th W 220.03 ft, N 165 ft, E 220.03 ft, S 165 ft to beg	17	112	23	0.84	0.63	1.89	10.00	07.017.5500
Timothy & Jody O'Loughlin	That part of SE 1/4 beg 1322.49 ft N & 749.03 ft W of SE cor of Sec 17, th W 165 ft, N 165 ft, E 165 ft, S 165 ft to beg	17	112	23	0.62	0.46	1.38	10.00	07.017.5510
Timothy & Jody O'Loughlin	SW 1/4 of SE 1/4	17	112	23	40.00	40.00	427.00	832.65	07.017.5100

Timothy & Jody O'Loughlin	SE 1/4 of SE 1/4 less 21.07 ac	17	112	23	18.93	12.23	36.69	71.55	07.017.5100
Joshua & April Choate	That part of SE 1/4 of SE 1/4 beg 621.49 ft N of SE cor of Sec 17, th W 567.74 ft, N 663.55 ft, E 567.76 ft, S 668 ft to beg	17	112	23	8.67	6.13	18.39	35.86	07.017.5200
Jeffrey & Maryn Freitag	That part of SE 1/4 of SE 1/4 beg 385.49 ft N of SE cor of Sec 17, th W 417 ft, N 62 ft, W 70 ft, N 174 ft, E 487 ft, S 236 ft to beg	17	112	23	2.54	1.26	3.78	10.00	07.017.5300
David & Mary Choate	That part of SE 1/4 of SE 1/4 beg 1289.49 ft N & 567.76 ft W of SE cor of Sec 17, th W 456.27 ft, S 659.98 ft, E 456.26 ft, N 663.55 ft to beg	17	112	23	6.93	6.93	20.79	40.54	07.017.5600
Timothy & Jody O'Loughlin	That part of SE 1/4 beg 1289.49 ft N of SE cor of Sec 17, th W 1024.03 ft, N 33 ft, E 1024.03 ft, S 33 ft to beg	17	112	23	0.78	0.30	0.90	10.00	07.017.5510
Wencel A Kubes	That part of SE 1/4 of SE 1/4 beg 621.49 ft N & 487 ft W of SE cor of Sec 17, th W 537 ft, S 174 ft, E 537 ft, N 174 ft to beg	17	112	23	2.15	2.15	6.45	12.58	07.017.5900
Widmer Pork Inc	W 256 ft of E 120 ac lying N of CR #122 less N 244 ft thereof	18	112	23	2.48	2.48	8.06	15.72	07.018.2500
John V & Rosemary Widmer Rev Trusts	That part of E 120 ac of NE 1/4 lying N of road less 2.48 ac	18	112	23	27.52	17.52	56.94	111.03	07.018.2510
James M & Kay Pexa	41 ac of E 120 ac of NE 1/4	18	112	23	41.00	13.66	43.00	83.85	07.018.3000
Paul H & Doreen Seurer	40.04 ac of E 120 ac of NE 1/4	18	112	23	40.04	13.34	42.00	81.90	07.018.3100
Heidelberg Farms LLC	24.17 ac of SE 1/4 of NE 1/4 (in City of Heidelberg)	19	112	23	24.17	15.00	182.50	355.88	17.019.3500
Jeffrey L & Janet Glass	That part of S 1/2 of NE 1/4 beg 541 ft W of NE cor, th SE 227.81 ft, SE 185.82 ft, W 456.60 ft, N 409.66 ft, E 409.18 ft (in City)	19	112	23	4.00	3.00	36.50	71.18	17.019.3700
Donald I Miller	7 ac of SE 1/4 of NE 1/4 (in City of Heidelberg)	19	112	23	7.00	7.00	152.00	296.40	17.019.3400
Western Catholic Community	N 10 ac of E 1/2 of SE 1/4 less 50 X 150 ft (in City of Heidelberg)	19	112	23	9.83	7.86	23.58	45.98	17.999.0030
City of Heidelberg	50 X 150 ft of E 1/2 of SE 1/4 (in City of Heidelberg)	19	112	23	0.17	0.14	0.42	10.00	17.999.0060
Janet Manthe	That part of NE 1/4 of SE 1/4 beg 330 ft S of E 1/4 cor of Sec 19, th S 145 ft, W 751.04 ft, N 145 ft, E to beg	19	112	23	2.50	1.50	4.50	10.00	17.019.5800
Doug & Joan Filzen	That part of NE 1/4 of SE 1/4 beg 495 ft S of E 1/4 cor of Sec 19, th W 1320 ft, N 165 ft, E 568.96 ft, S 145 ft, E 751.04 ft, S 20 ft to beg	19	112	23	2.50	1.50	4.50	10.00	17.019.6300
Gary R Stocker	Tract A, Reg Land Survey #11	19	112	23	0.95	0.95	2.85	10.00	17.420.0010
Donald W & Therese Hlavac	Tract B, Reg Land Survey #11	19	112	23	1.02	1.02	3.06	10.00	17.420.0020
Geraldine Odenthal	11.88 ac of N 44.75 ac of E 1/2 of SE 1/4 (in City)	19	112	23	11.88	2.03	6.09	11.88	17.019.5900
Geraldine Odenthal	S 35.25 ac of E 1/2 of SE 1/4 less 240 X 181 ft	19	112	23	34.25	14.00	42.00	81.90	17.019.6100

Bradley A Scharf	240 ft E & W X 181 ft N & S in S 35.25 ac of E 1/2 of SE 1/4	19	112	23	1.00	1.00	3.00	10.00	17.019.6200
Gregg L & Lisa Mellen	That part of Lot 8, Block 1, Heidelberg Country Acres lying in SW 1/4 of NW 1/4 (in City)	20	112	23	1.39	1.34	68.06	132.72	17.440.0080
Michael J & Shirley A Stella	That part of Lot 9, Block 1, Heidelberg Country Acres lying in SW 1/4 of NW 1/4 (in City)	20	112	23	7.18	6.94	352.50	687.38	17.440.0090
Paul D Elliott	Lot 10, Block 1 (in City) Heidelberg Country Acres	20	112	23	8.87	8.58	435.80	849.81	17.440.0100
Keith F & Julie A Malecha	Lot 11, Block 1 (in City) Heidelberg Country Acres	20	112	23	6.06	5.86	297.65	580.42	17.440.0110
Matthew & Jeana Graf	That part of W 1/2 of NW 1/4 beg 360.95 ft N of W 1/4 cor of Sec 20, th N 730.05 ft, E 268.66 ft, S 729.10 ft, W 268.67 ft to beg	20	112	23	4.50	4.35	220.95	430.85	17.020.0100
Steven & Rebecca Smisek	That part of W 1/2 of NW 1/4 beg 1091 ft N of W 1/4 cor of Sec 20, th N 217.80 ft, E 400 ft, S 217.80 ft, W 400 ft to beg (in City)	20	112	23	2.00	1.93	98.04	191.18	17.020.0200
City of Heidelberg	Roads in Heidelberg Country Acres	20	112	23	4.56	4.33	115.09	224.43	17.999.0070
Michael & Kate Pexa	Lot 1, Block 1, Heidelberg Country Acres	20	112	23	2.53	2.41	64.06	124.92	17.440.0010
Roger H & Jeanne M Wacker	Lot 2, Block 1, Heidelberg Country Acres	20	112	23	2.51	2.39	63.52	123.86	17.440.0020
Daniel J & Michelle A Rynda	Lot 3, Block 1, Heidelberg Country Acres	20	112	23	2.54	2.41	64.06	124.92	17.440.0030
Michael P & Colleen F Traxler	Lot 4, Block 1, Heidelberg Country Acres	20	112	23	4.39	4.17	110.83	216.12	17.440.0040
Brian J Arens & Lisa L Hofer	Lot 5, Block 1, Heidelberg Country Acres	20	112	23	3.75	3.56	94.62	184.51	17.440.0050
Harland Ray Cox & Debra A Pexa	Lot 6, Block 1, Heidelberg Country Acres	20	112	23	3.54	3.36	89.30	174.14	17.440.0060
Thomas L & Shari Kreutzian	Lot 7, Block 1, Heidelberg Country Acres	20	112	23	2.82	2.68	71.23	138.90	17.440.0070
Gregg L & Lisa Mellen	That part of Lot 8, Block 1, Heidelberg Country Acres lying in NW 1/4 of NW 1/4	20	112	23	2.14	2.03	53.96	105.22	17.440.0080
Michael J & Shirley A Stella	That part of Lot 9, Block 1, Heidelberg Country Acres lying in NW 1/4 of NW 1/4	20	112	23	0.25	0.24	6.38	12.44	17.440.0090
Dave J Monnens Trust & Rachel Meger Trust	Lot 1, Block 2, Heidelberg Country Acres	20	112	23	2.58	2.45	65.12	126.98	17.440.0120
Donald & Colleen Schoenecker	Lot 2, Block 2, Heidelberg Country Acres	20	112	23	3.06	2.91	77.35	150.83	17.440.0130
Roger & Tammy Ness	Lot 3, Block 2, Heidelberg Country Acres	20	112	23	2.75	2.61	69.37	135.27	17.440.0140
Thomas J Pexa	Lot 4, Block 2, Heidelberg Country Acres	20	112	23	2.58	2.45	65.11	126.96	17.440.0150
Michael J & Shirley A Stella	That part of N 30 ac of SE 1/4 of NW 1/4 lying W of CD #44 less cartway	20	112	23	3.50	3.50	480.00	936.00	07.020.0100
County of Le Sueur - Hwy Dept	W 23.50 ac of NE 1/4 of NW 1/4	20	112	23	23.50	23.00	2409.00	4,697.55	07.999.0190
Timothy & Jody O'Loughlin	E 16.50 ac of NE 1/4 of NW 1/4	20	112	23	16.50	16.00	518.00	1,010.10	07.020.0300
Timothy & Jody O'Loughlin	N 3/4 of SE 1/4 of NW 1/4 lying E of CD #44	20	112	23	25.50	25.00	1165.00	2,271.75	07.020.0300
Western Catholic Community	S 10 ac of W 1/2 of NW 1/4 in City of Heidelberg	20	112	23	10.00	10.00	185.00	360.75	17.999.0040
William R Nytes	2.90 ac of NW 1/4 of SW 1/4 (in City of Heidelberg)	20	112	23	2.90	2.90	66.00	128.70	17.020.8500
Kevin A & Crystal Zvanovec	3.50 ac of NW 1/4 of SW 1/4 (in City of Heidelberg)	20	112	23	3.50	3.00	75.00	146.25	17.020.8400

Gerald A & Mary Ademmer	S 22.6 ac of NW 1/4 of SW 1/4 less 3.69 ac in SW cor (in City)	20	112	23	18.91	17.05	156.14	304.47	17.020.7700
David Byro	.05 ac of S 22.6 ac of NW 1/4 of SW 1/4 lying in SW cor	20	112	23	0.05	0.05	0.46	10.00	17.020.8200
Theodore J & Tracy Odenthal	3.08 ac of NW 1/4 of SW 1/4 (in City of Heidelberg)	20	112	23	3.08	1.90	17.40	33.93	17.020.8300
Theodore J & Tracy Odenthal	N 50 ft of W 145 ft of W 43 rods of SW 1/4 of SW 1/4 (in City of Heidelberg)	20	112	23	0.17	0.15	0.96	10.00	17.020.8300
Arthur & Susan Kasendorf	W 53 rods of SW 1/4 of SW 1/4 less S 209 ft of W 627 ft and less N 50 ft of W 145 ft & less .06 ac to Hwy 28 R/W & less 2.49 ac	20	112	23	15.53	13.66	87.08	169.81	17.020.8100
Mario Angelo Rossetti	2.50 ac of SW 1/4 of SW 1/4	20	112	23	2.49	2.19	13.96	27.22	17.020.7950
Joshua W Stocker	10.36 ac of SW 1/4 of SW 1/4 (in City)	20	112	23	10.50	9.66	49.44	96.41	17.020.7900
Mildred Odenthal	That part of SW 1/4 beg at SE cor of SW 1/4 of SW 1/4, th N 1320 ft, W 132 ft, S 1320 ft, E 132 ft to beg (in City) less .05 ac to Hwy 28 R/W	20	112	23	3.95	3.67	18.78	36.62	17.020.8000
Mildred Odenthal	That part of SW 1/4 beg 132 ft W of SE cor of SW 1/4 of SW 1/4, th N 1320 ft, W 132 ft, S 1320 ft, E 132 ft to beg (in City) less .05 ac to Hwy 28 R/W	20	112	23	3.95	3.67	18.78	36.62	17.020.8000
Peggy Doerr	209 X 627 ft in SW cor of SW 1/4 less .24 ac to Hwy 28 (in City)	20	112	23	3.00	3.00	9.00	17.55	17.020.7500
Homer & Amy Lee	2.10 ac of NW 1/4 of SW 1/4 (in City)	20	112	23	2.10	2.10	48.00	93.60	17.020.8600
James & Donna Hoefs Trusts	S 10 ac of SE 1/4 of NW 1/4	20	112	23	10.00	10.00	966.00	1,883.70	07.020.7500
James & Donna Hoefs Trusts	NE 1/4 of SW 1/4	20	112	23	40.00	40.00	1758.00	3,428.10	07.020.7500
James & Donna Hoefs Trusts	SE 1/4 of SW 1/4 less 23.60 ac	20	112	23	16.40	15.58	77.08	150.31	07.020.7500
James A & Donna Hoefs Trusts	23.60 ac of SE 1/4 of SW 1/4 less .31 ac to R/W	20	112	23	23.29	22.42	110.92	216.29	07.020.7600
Timothy & Jody O'Loughlin	NW 1/4 of NE 1/4	20	112	23	40.00	40.00	521.00	1,015.95	07.020.2600
Leonard & Eleanore Shambour Trusts	SW 1/4 of NE 1/4 less 4 ac	20	112	23	36.00	36.00	529.20	1,031.94	07.020.2500
Cindy & John Runyon	4 ac of SW 1/4 of NE 1/4	20	112	23	4.00	4.00	58.80	114.66	07.020.2800
Leonard & Eleanore Shambour Trusts	SE 1/4 of NE 1/4 less 1 ac	20	112	23	39.00	38.03	114.09	222.48	07.020.2500
Cindy & John Runyon	1 ac of SE 1/4 of NE 1/4	20	112	23	1.00	0.97	2.91	10.00	07.020.2800
Rusty & Nancy L Tiede Trust	NW 1/4 of SE 1/4	20	112	23	40.00	40.00	2731.00	5,325.45	07.020.5000
Rusty & Nancy L Tiede Trust	NE 1/4 of SE 1/4 less 13.08 ac	20	112	23	26.92	26.25	1085.00	2,115.75	07.020.5000
Victor J & Mary A Braith	S 670 ft of E 850 ft of N 1/2 of SE 1/4	20	112	23	13.08	12.75	527.00	1,027.65	07.020.5100
Richard L & Mary J Hruby	SW 1/4 of SE 1/4	20	112	23	40.00	38.00	355.00	692.25	07.020.5200
Richard L & Mary J Hruby	SE 1/4 of SE 1/4 less 1 ac for ROW	20	112	23	39.00	37.00	1547.00	3,016.65	07.020.5200
Jeremy M Geske	3.25 ac of SW 1/4 of NW 1/4	21	112	23	3.25	3.17	66.57	129.81	07.021.0200
Douglas E Meyer	SW 1/4 of NW 1/4 less 3.25 ac	21	112	23	36.75	35.83	752.43	1,467.24	07.021.0300
Douglas E Meyer	SE 1/4 of NW 1/4	21	112	23	40.00	40.00	1742.00	3,396.90	07.021.0300
Richard L & Mary J Hruby	NW 1/4 of SW 1/4 less 3.02 ac	21	112	23	36.98	36.06	1268.57	2,473.71	07.021.7500
Keith & Lynn Sticha	2.02 ac of NW 1/4 of SW 1/4	21	112	23	2.02	1.97	69.31	135.15	07.021.7900

James A & Donna Hoefs Trusts	1 ac of NW 1/4 of SW 1/4	21	112	23	1.00	0.97	34.12	66.53	07.021.7800
Richard L & Mary J Hruby	NE 1/4 of SW 1/4 less 14.23 ac	21	112	23	25.77	25.77	411.68	802.78	07.021.7500
Todd & Kaysie Pakiz	2.62 ac of NE 1/4 of SW 1/4	21	112	23	2.62	2.62	41.85	81.61	07.021.8000
Todd & Kaysie Pakiz	5.01 ac of NE 1/4 of SW 1/4	21	112	23	5.01	5.01	80.04	156.08	07.021.8100
Keith & Lynn Sticha	6.60 ac of NE 1/4 of SW 1/4	21	112	23	6.60	6.60	105.43	205.59	07.021.7900
James A & Donna Hoefs Trusts	SW 1/4 of SW 1/4	21	112	23	40.00	38.00	620.00	1,209.00	07.021.7800
James A & Donna Hoefs Trusts	SE 1/4 of SW 1/4 less 5.82 ac	21	112	23	34.18	33.33	307.66	599.94	07.021.7800
Richard L & Mary J Hruby	1 ac of SE 1/4 of SW 1/4	21	112	23	1.00	0.97	8.95	17.45	07.021.7500
David & Catherine Smisek	1.95 ac of SE 1/4 of SW 1/4	21	112	23	1.95	1.90	17.54	34.20	07.021.7700
James & Kathy Heyda	2.47 ac of SE 1/4 of SW 1/4	21	112	23	2.47	2.41	22.25	43.39	07.021.7600
Le Sueur County - Hwy Dept	County Road #28 ROW	21	112	23	0.40	0.39	3.60	10.00	07.999.0230
D & A Meyer Farms, Inc	SW 1/4 of NE 1/4	21	112	23	40.00	5.00	15.00	29.25	07.021.2500
Theodore M & Colleen Wondra	NW 1/4 of SE 1/4	21	112	23	40.00	20.00	246.00	479.70	07.021.5100
LeRoy Heyda & Christopher Heyda	SW 1/4 of SE 1/4	21	112	23	40.00	10.00	120.00	234.00	07.021.5000
Gary F & Susan Odenthal	NW 1/4 of NW 1/4 less 12.20 ac	28	112	23	27.80	26.41	1027.91	2,004.42	07.028.0600
Gary F & Susan Odenthal	2.20 ac of NW 1/4 of NW 1/4	28	112	23	2.20	2.09	81.34	158.63	07.028.0300
Jeffrey & Jacqueline Brockway	W 155 ft of E 630 ft of N 691.43 ft of NW 1/4 of NW 1/4	28	112	23	2.40	2.28	88.74	173.04	07.028.0400
Timothy R & Therese Tulloch	E 475 ft of E 630 ft of N 691.43 ft of NW 1/4 of NW 1/4 & less .25 ac to CR #28 R/W	28	112	23	7.35	6.98	271.67	529.76	07.028.0410
Le Sueur County - Hwy Dept	County Road #28 ROW	28	112	23	0.25	0.24	9.34	18.21	07.999.0230
Gary F & Susan Odenthal	N 1/2 of SW 1/4 of NW 1/4	28	112	23	20.00	19.00	1119.00	2,182.05	07.028.0600
Allison Hoffman Family LP	W 36 ac of NE 1/4 of NW 1/4 less 3.32 ac	28	112	23	32.68	30.86	893.13	1,741.60	07.028.0100
Andrew J Harms & Skye M Harms	That part of W 72 ac of E 1/2 of NW 1/4 beg 529 ft S of NW cor, th E 414 ft, S 350 ft, W 414 ft, N 350 ft to beg	28	112	23	3.32	3.14	90.87	177.20	07.028.0200
Allison Hoffman Family LP	W 36 ac of SE 1/4 of NW 1/4	28	112	23	36.00	14.00	347.00	676.65	07.028.0100
Christopher & Christine Heyda	S 20 ac of W 1/2 of NW 1/4	28	112	23	20.00	19.00	1634.00	3,186.30	07.028.0500
Daniel Sullivan	NW 1/4 of SW 1/4	28	112	23	40.00	10.00	30.00	58.50	07.028.7700
Mary A Rehor et al	NE 1/4 of SW 1/4	28	112	23	40.00	15.00	119.00	232.05	07.028.7500
Allison Hoffman Family LP	E 4 ac of NE 1/4 of NW 1/4 less 1.26 ac in NE cor	28	112	23	2.74	2.06	6.18	12.05	07.028.2600
Bruce R & Joan D Johnson	.73 ac of E 4 ac of NE 1/4 of NW 1/4	28	112	23	0.73	0.55	1.65	10.00	07.028.2800
Donna Shaughnessy Trust	.53 ac of NE 1/4 of NW 1/4	28	112	23	0.53	0.39	1.17	10.00	07.028.2900
Allison Hoffman Family LP	E 4 ac of SE 1/4 of NW 1/4	28	112	23	4.00	1.00	96.00	187.20	07.028.2600
Allison Hoffman Family LP	NW 1/4 of NE 1/4 less 12.72 ac	28	112	23	27.28	5.00	15.00	29.25	07.028.2600
Derek Borgheiinck & Cheryl Larsen	7 ac of W 27 ac of NW 1/4 of NW 1/4	29	112	23	7.00	7.00	21.00	40.95	07.029.0200
Robert H & Judith Hauer Trusts	W 27 ac of NW 1/4 of NW 1/4 less 7 ac	29	112	23	20.00	5.00	15.00	29.25	07.029.0220
Robert H & Judith Hauer Trusts	E 13 ac of NW 1/4 of NW 1/4	29	112	23	13.00	13.00	39.00	76.05	07.029.0210
Richard L & Mary J Hruby	NE 1/4 of NW 1/4 less .52 ac to CR 28 R/W	29	112	23	39.48	39.00	198.00	386.10	07.029.0100
Richard L & Mary J Hruby	SE 1/4 of NW 1/4	29	112	23	40.00	15.00	45.00	87.75	07.029.0100
Neil J & Karen V Vlasak	26.37 ac of NW 1/4 of SE 1/4	29	112	23	26.37	4.00	12.00	23.40	07.029.5300
Neil J & Karen V Vlasak	6.11 ac of NW 1/4 of SE 1/4	29	112	23	6.11	2.00	6.00	11.70	07.029.5200
Neil J & Karen V Vlasak	NE 1/4 of SE 1/4 less .70 ac	29	112	23	39.30	19.00	171.00	333.45	07.029.5200

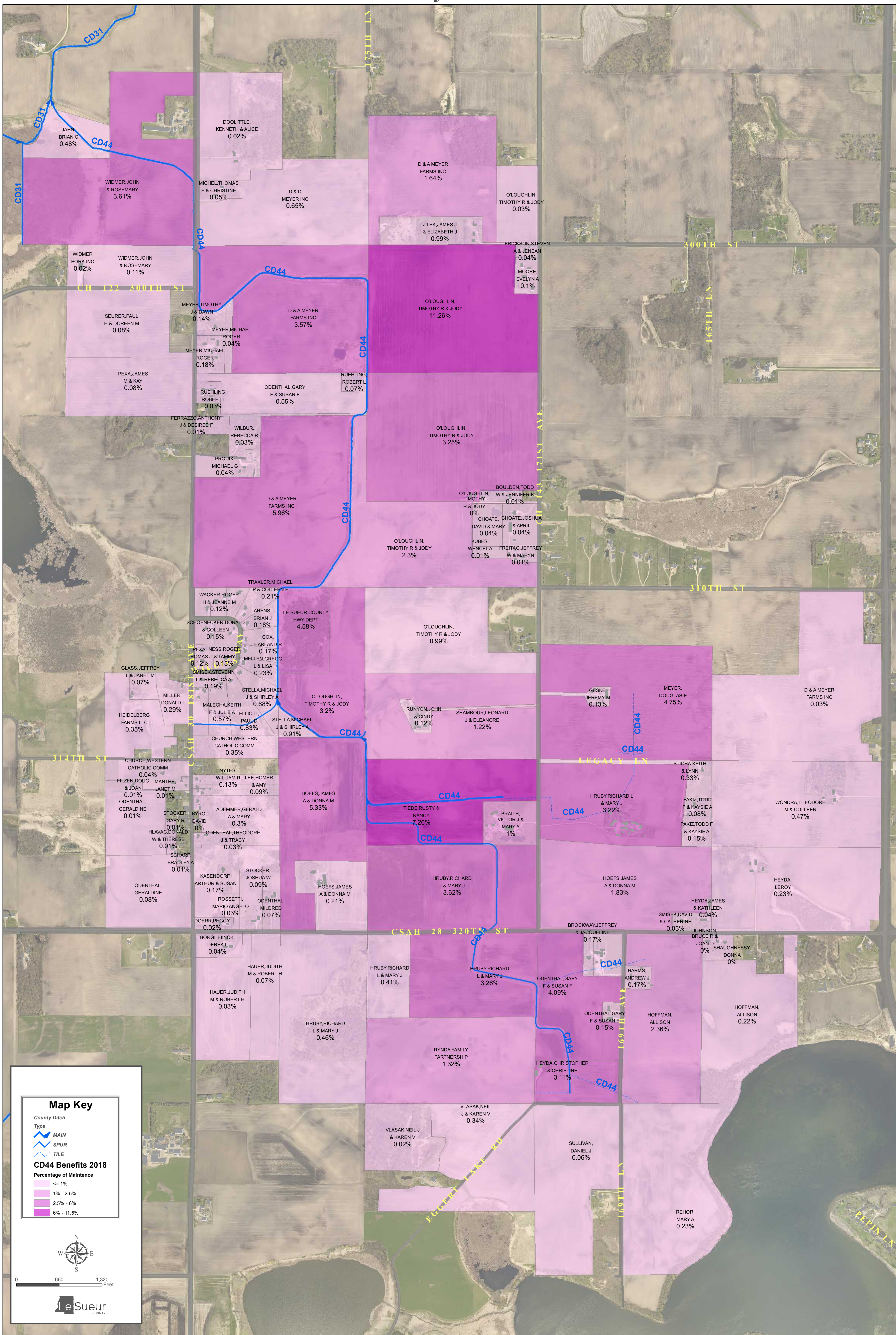
Richard L & Mary J Hruby	E 1/2 of NW 1/4 of NE 1/4	29	112	23	20.00	19.50	214.00	417.30	07.029.2600
Richard L & Mary J Hruby	W 1/2 of NW 1/4 of NE 1/4 less .26 ac to Hwy 28 R/W	29	112	23	19.74	19.50	214.00	417.30	07.029.2700
Richard L & Mary J Hruby	NE 1/4 of NE 1/4	29	112	23	40.00	39.00	1501.00	2,926.95	07.029.2600
Rynda Family Partnership	W 20 ac of S 1/2 of NE 1/4	29	112	23	20.00	15.00	45.00	87.75	07.029.2500
Rynda Family Partnership	E 60 ac of S 1/2 of NE 1/4	29	112	23	60.00	60.00	648.00	1,263.60	07.029.2500
Le Sueur County - Hwy Dept	Benefits to CR #143	21	112	23			100.00	195.00	07.999.8848
Le Sueur County - Hwy Dept	Benefits to CSAH #30	20	112	23			100.00	195.00	07.999.8848
Lanesburgh Twp % Vicky Valley	Benefits to Twp Road	19	112	23			180.00	351.00	07.999.8888
					Grand Total:		52541.00	102,569.54	

TIMELINE FOR COUNTY DITCH 44 1914-2017

12/14/1914	Petition for a public ditch
12/13/1915	Report of Engineer
12/14/1915	Viewers Oath
12/18/1915	Viewers Report
2/10/1916	Order Establishing Ditch
	Contract for construction to G.E. Gilbertson & Son
5/31/1916	Lien
12/13/1916	Order extending time to complete contract
10/31/1917	Engineer's Acceptance and Contractor Petition for Approval
11/12/1917	Acceptance of CD44 excepting Spur #3
7/31/1918	Engineer's Certificate of Acceptance of Spur #3
Nothing from 1919-1953	
9/7/1954	Board authorized Soil Conservation Service to supervise construction of a tile inlet on the west side of north one half of SW1/4, Section 21-112-23
12/5/1961	Improvement petition
10/24/1962	Engineer's Preliminary Report
11/19/1962	Board approved recommended changes to ditch
12/17/1962	Engineer's Final Report, viewers appointed
1/4/1963	Department of Conservation Director's Report
4/5/1963	Board approved resolution to permit the preparation of amended plans by the engineer and viewers.
4/19/1963	Engineer's Final Amended Report (Alternate) approved
4/19/1963	Improvement Order
6/21/1963	Contracts to Northern Culvert (section 2) and Emil Olson & Son (sections 1 and 3)

8/28/1963	Change of location for portion of the ditch in Section 17-112-23 approved. A change to Spur 1 Section 28-110-24, from Station 2+90 to 10 was also approved to eliminate open ditch construction and allow installation of private tile at that location.
10/31/1963	Lien
2/26/1965	Contractor contracts completed
3/17/1972	Engineer's Report
8/16/1973	Lien
4/24/1974	Lien release (10/31/1963)
3/24/1977	Lien Release (8/16/1973)
9/15/1986	Lien
10/21/1987	Amended lien
11/8/1990	Lien Release (9/15/1986)
11/15/1990	Lien
8/1/1994	Lien release (11/15/1990)
2006	Lien
2011	Lien
4/18/17	Informational redetermination/repair public hearing scheduled for 11 a.m.
4/18/17	The Board directed Attorney John Kolb to prepare an order to correct the record for County Ditch 44 prior to consideration of a redetermination of benefits, correction order then approved and signed 5/2/17.

County Ditch #44



County Ditch #44

