



Le Sueur County, MN

Tuesday, April 10, 2018

Board Meeting

Item 11

CD61

RE: Recommend a 60% lien in the amount of \$10,351.10 to be spread over 2 years beginning with taxes payable in 2019. The interest rate is 4% with a \$10.00 minimum and \$100 or less to be paid in one installment. The lien will be filed December 14, 2018.

RE: Timeline

RE: Redetermination of Benefits Discussion

Staff Contact:

Ditch # 61
 Last Lien 2011

Balance as of 2/14/18

AMOUNT
-2,611.⁸⁴

EXPENSES:

AMOUNT

Houston Engineering (Software Maint Fee)	165.92
I+S Group (Prof. Serv.)	5,164. ⁰⁰
SWCD (Inspectors)	496. ⁷⁷
Benville County (Share - Ditch Viewer prog.)	16. ⁴⁰
Rinke - Noonan (Drainage Ret. / Issues)	1,595. ⁸⁰
Scott's Helicopter (Spraying)	128. ⁰⁰
Misc (Publishing, Recording, Lien)	1,611. ²⁸
TOTAL	<u>9,178.¹⁷</u>

\$9,178.¹⁷ / 7 yrs =
 \$1,311.¹⁷ / yr x
 3 yrs =
 3,933.⁵¹
 + 2,611.⁸⁴

 \$6,545.³⁵

recommended 2 yrs
 @ 4% Int, \$10 min

<u>Base</u>	<u>%</u>	<u>Total</u>	<u>Diff</u>
17,230. ⁰⁰	60%	10,338. ⁰⁰	3792. ⁶⁵

* has project in review by soil & water (no cost estimate)

**Auditor's Tabular Assessment Statement *(1) For the Creation of a Fund to be used for the Repair of *(2) For the Repair of Le Sueur County
Ditch No. 61 in the County of Le Sueur Minnesota**

***If the lien is for the Creation of a fund to be used for repairs in the future strike out (2). If the lien is for repairs already made strike out (1).**

Names of the Owners of all Lands and the Names of all Public Roads, Corporate Roads and Railroads that are Assessed for the Repair of said Ditch.	Description of each Parcel of Land to be Assessed for the Repair of said Ditch as it Appears from Original Lien Statement for Construction of said Ditch.	Section	Township	Range	Number of acres in each tract according to assessment rolls and tax list.	Estimated number of acres benefited.	Amount that each tract of land and each public road, corp-orate road and rail-road was benefitted by the construction of said ditch.	Amount that each tract of land and each public road, corp-orate road and rail-road is liable for and must pay for the repair of such ditch.	Board Meeting - April 10, 2018 60% Lien 4% Interest 2 years Filed - December 14, 2018
					Acres	Acres	Dollars	Dollars	
Milo C & Carolyn Wondra Trust	SW 1/4 of SW 1/4	14	110	24	40.00	15.00	3.00	10.00	02.014.7500
Milo C & Carolyn Wondra Trust	S 1/2 of SE 1/4 of SW 1/4	14	110	24	20.00	10.00	414.00	248.40	02.014.7600
Francis A & Mary L Androli Trusts	SW 1/4 of SE 1/4	14	110	24	40.00	15.00	198.00	118.80	02.014.5000
Milo C & Carolyn Wondra Trust	N 1/2 of NW 1/4 of NW 1/4	23	110	24	20.00	19.00	1062.00	637.20	02.023.0300
Francis Androli & Mary L Androli Trusts	NW 1/4 of NE 1/4 less 1 ac	23	110	24	39.00	39.00	1281.00	768.60	02.023.2500
David G Novotny	NE 1/4 of NE 1/4	22	110	24	40.00	35.00	1601.00	960.60	02.022.2500
David G Novotny	SE 1/4 of NE 1/4 less 2.95 ac	22	110	24	37.05	36.58	1500.72	900.43	02.022.2500
Mark & Lisa Frederick	2.45 ac of SE 1/4 of NE 1/4	22	110	24	2.45	2.42	99.28	59.57	02.022.2600
John E & Pamela Mc Gillen	S 1/2 of NW 1/4 of NW 1/4	23	110	24	20.00	19.00	496.00	297.60	02.023.0200
John L & Candi L Theis	That part of S 1/2 of NW 1/4 beg at SW cor, th N 933.38 ft, E 933.38 ft, to C.L. of road, th SW along C.L. to beg	23	110	24	10.00	9.50	159.25	95.55	02.023.0100
John E & Pamela Mc Gillen	SW 1/4 of NW 1/4 less 10 ac	23	110	24	30.00	28.50	477.75	286.65	02.023.0200
John E & Pamela Mc Gillen	SE 1/4 of NW 1/4	23	110	24	40.00	40.00	1993.00	1,195.80	02.023.0200
Scott & Roxane Collier Trust	NE 1/4 of NW 1/4	23	110	24	40.00	36.00	1302.00	781.20	02.023.0400
Thomas G & Lori Jindra	That part of NW 1/4 of SW 1/4 lying N of CD #61	23	110	24	36.15	34.97	476.13	285.68	02.023.7600
Domonoske Family Trust	That part of NW 1/4 of SW 1/4 lying S of CD #61	23	110	24	4.17	4.03	54.87	32.92	02.023.7700
Domonoske Family Trust	That part of SW 1/4 of SW 1/4 lying S of CD #61 less 11.75 ac	23	110	24	24.99	10.69	36.88	22.13	02.023.7700
Kyle O'Malley	That part of W 1/2 of SW 1/4 beg at SW cor of Sec 23, th N 1100.08 ft, E 408.59 ft, NE 57.38 ft, S 1120.04 ft, W 463.79 ft to beg	23	110	24	11.75	6.00	20.70	12.42	02.023.7800
Thomas G & Lori Jindra	That part of SW 1/4 of SW 1/4 lying N of CD #61	23	110	24	3.31	3.31	11.42	10.00	02.023.7600
Bernard & Claranita Haefner	That part of W 1/2 of E 1/2 comm at W 1/4 cor, th E on N line of SW 1/4 1908.18 ft, S 1164.59 ft, W 145.61 ft to POB, th S 1483.81 ft, W 439.78 ft, N 1483.09 ft, E 439.78 ft to beg	23	110	24	14.97	2.56	33.79	20.27	02.023.7500
JoAnn Kortuem	E 240 ft of S 1483.81 ft of W 1/2 of E 1/2 of SW 1/4	23	110	24	8.89	5.70	75.24	45.14	02.023.7510

Thomas G & Lori Jindra	W 585.39 ft of N 1164.59 ft of W 1/2 of E 1/2 of SW 1/4	23	110	24	15.70	15.70	207.24	124.34	02.023.7600	
Charles Haefner	E 75.66 ft of N 1164.59 ft of W 1/2 of E 1/2 of SW 1/4	23	110	24	1.04	1.04	13.73	10.00	02.023.5120	
JoAnn Kortuem	W 199.44 ft of S 1484.53 ft of E 1/2 of E 1/2 of SW 1/4	23	110	24	6.68	1.68	62.45	37.47	02.023.7510	
Marilyn Holicky	E 442.96 ft of S 1484.53 ft of E 1/2 of E 1/2 of SW 1/4	23	110	24	15.90	15.90	591.00	354.60	02.023.5110	
Charles Haefner	E 624.4 ft of N 1164.59 ft of E 1/2 of E 1/2 of SW 1/4	23	110	24	17.42	17.42	647.55	388.53	02.023.5120	
Charles Haefner	NW 1/4 of SE 1/4	23	110	24	40.00	40.00	541.00	324.60	02.023.5120	
Marilyn Holicky	SW 1/4 of SE 1/4 less 5 ac	23	110	24	35.00	34.25	574.37	344.62	02.023.5110	
Andrew J Skluzacek	Beg at S 1/4 cor of Sec 23, th N on S 1/4 line 479 ft, th E 455.32 ft, S 479 ft, W 455.32 ft to beg	23	110	24	5.00	4.75	79.63	47.78	02.023.5100	
Curtis D & Pamela Schwartz	N 1/2 of SW 1/4 of NE 1/4	23	110	24	20.00	20.00	426.00	255.60	02.023.2900	
Curtis D & Pamela Schwartz	S 1/2 of SW 1/4 of NE 1/4	23	110	24	20.00	20.00	860.00	516.00	02.023.3000	
Curtis C Bohlen	NE 1/4 of NE 1/4 less N 2 rods	23	110	24	39.00	20.00	499.00	299.40	02.023.2700	
Jonathan & Andi Goettl	N 338.13 ft of E 219 Ft of SE 1/4 of NE 1/4	23	110	24	1.70	1.66	22.05	13.23	02.023.2600	
Jonathan & Andi Goettl	2.19 AC of SE 1/4 of NE 1/4	23	110	24	2.19	2.13	28.29	16.97	02.023.2610	
Curtis D & Pamela Schwartz	N 1/2 of SE 1/4 of NE 1/4 less 3.89 ac	23	110	24	16.11	15.71	208.66	125.20	02.023.2900	
Richard G & Joanne Kopet	That part of SE 1/4 of NE 1/4 beg 297.73 ft N of E 1/4 cor of Sec 23, th N 359.52 ft, W 446 ft, S 359.52 ft, E 446 ft to beg	23	110	24	3.68	3.59	47.68	28.61	02.023.2800	
Curtis D & Pamela Schwartz	S 1/2 of S 1/2 of NE 1/4 less 3.68 ac	23	110	24	16.32	15.91	211.32	126.79	02.023.3000	
Florence Peach	NE 1/4 of SE 1/4	23	110	24	40.00	39.00	392.00	235.20	02.023.5000	
Florence Peach	SE 1/4 of SE 1/4	23	110	24	40.00	38.00	392.00	235.20	02.023.5000	
Curtis C Bohlen	NW 1/4 of SW 1/4	24	110	24	40.00	15.00	130.00	78.00	02.024.7500	
Grand Total:								17230.00	10351.10	

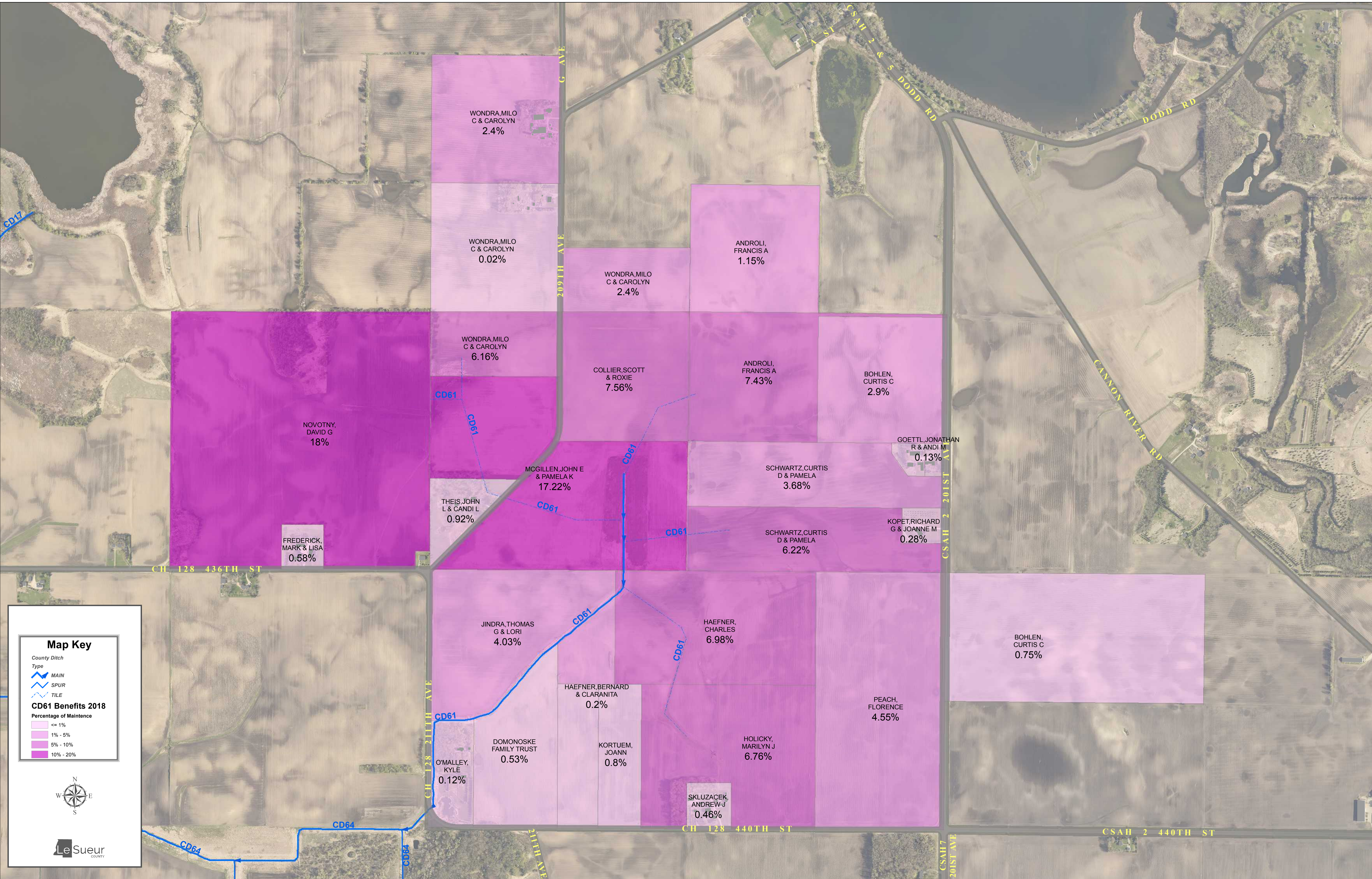
TIMELINE FOR COUNTY DITCH #61 1957-2017

*CD17, 61 and 64 represent one major watershed

5/5/1957	Petition
5/14/1957	Viewers appointed
7/5/1957	Department of Conservation letter approving plans
1/31/1958	Viewers Report
3/6/1958	Board amended Viewers Report
4/15/1958	Stipulation of Settlement – Malinsky
4/22/1958	Call for Bids, contract to Amberg & Roemhildt
11/21/1958	Engineer’s Report, Completion of Contract
1/15/1959	Lien
1/31/1961	Lien
3/17/1970	Lien releases (1/15/1959 and 1/1/1960)
8/16/1973	Lien
3/26/1976	Lien release (8/16/1973)
1/24/1985	Engineer inspection report
5/7/1985	Cleanout contract to Jones Construction
5/15/1986	Lien
10/11/1990	Lien release (5/15/1986)
10/15/1997	Lien
1/6/2011	Lien Release (10/15/1997)

Informational hearing 12/7/17, discussion to revisit possible redetermination, repair and improvement options in early June 2018.

County Ditch #61



Map Key

County Ditch
Type

- MAIN
- SPUR
- TILE

CD61 Benefits 2018

Percentage of Maintenance

- <= 1%
- 1% - 5%
- 5% - 10%
- 10% - 20%

LeSueur
COUNTY