



**LE SUEUR COUNTY BOARD OF COMMISSIONERS
MEETING AGENDA
June 19, 2018**

1. **9:00 a.m. Agenda and Consent Agenda**
RE: June 5, 2018 Minutes and Summary Minutes
RE: June 12, 2018 Board of Equalization Minutes and Summary Minutes
RE: Tobacco Licenses:
 1. Davis Marketplace
 2. Dollar General Store #14798
 3. Vet's Oil Co. Inc.
 4. Kamp Dels, Inc.
 5. Scoops Liquor
 6. Denny's Bar, Inc.
 7. The Pit Stop
 8. J& L Bottles Inc
 9. Radermakers Food of Le Center and Le Sueur
 10. Ag Partners/Genesis

2. **9:05 a.m. Claims (5 min)**

3. **9:10 a.m. Human Services (35 min.)**

4. **9:45 a.m. Jim McMillen (15 min)**
RE: VIA
RE: Justice Center Radio System

5. **10:00 a.m. Dave Tiegs (10 min)**

6. **10:10 a.m. Closed Session (10 min)**
RE: To develop offer to purchase real property, parcel 01.103.7600 MN Stat.
13D.05 (3) (c) (3)

7. **10:20 a.m. Human Resources (5 min)**

8. **10:25 a.m. Darrell Pettis, County Administrator**
RE: West Jefferson Assessment Hearing Date Change
RE: Land Acquisition Notice
RE: FEMA Letter
RE: CD43
RE: Rural Sirens
RE: Justice Center Contracts:
Curb Masters, Inc
Pauly Jail
Thurnbeck Steel
Muska Electric
RTL Construction
Plexus Company dba Culinex
Javens Mechanical

9. **Commissioner Committee Reports**

10. **Future Meetings**

Le Sueur County, MN

Tuesday, June 19, 2018

Board Meeting

Item 1

9:00 a.m. Agenda and Consent Agenda

RE: June 5, 2018 Minutes and Summary Minutes

RE: June 12, 2018 Board of Equalization Minutes and Summary Minutes

RE: Tobacco Licenses:

- 1. Davis Marketplace*
- 2. Dollar General Store #14798*
- 3. Vet's Oil Co. Inc.*
- 4. Kamp Dels, Inc.*
- 5. Scoops Liquor*
- 6. Denny's Bar, Inc.*
- 7. The Pit Stop*
- 8. J& L Bottles Inc*
- 9. Radermakers Food of Le Center and Le Sueur*
- 10. Ag Partners/Genesis*

Staff Contact:

Minutes of Le Sueur County Board of Commissioners Meeting June 5, 2018

The Le Sueur County Board of Commissioners met in regular session on Tuesday, June 5, 2018 at 9:00 a.m. in the Courthouse at Le Center, Minnesota. Those members present were: Lance Wetzel, John King, Dave Gliszinski and Steve Rohlfling. Joe Connolly was excused. Also present were County Administrator Darrell Pettis and County Attorney Brent Christian.

On motion by Gliszinski, seconded by King and unanimously approved, the Board approved the agenda for the business of the day.

On motion by Rohlfling, seconded by Gliszinski and unanimously approved, the Board approved the consent agenda:

- Approved the April 24, 2018 County Board Minutes and Summary Minutes
- Approved tobacco licenses for:
 1. Valley Lanes dba The Bar - Le Sueur
 2. Casey's #2570, 2589, 2401 - Waterville, Elysian, Le Center
 3. Holiday Station #233, Le Sueur
 4. Le Center Municipal Liquor, Le Center
 5. Waterville Oil & Gas Co., Inc. dba PhilMart, Waterville
- Approved the May 2018 Transfers:
 1. #1697 Transfer 42.00 from Revenue to Human Services (Fuel for Vehicle used for Election Conference)
 2. #1698 Transfer 3,865.00 from Agency to Revenue (May Landshark)

On motion by King, seconded by Rohlfling and unanimously approved, the Board approved the claims for Human Services:

Financial: \$ 67,456.53
Soc Services: \$ 78,906.99

Nik Kadel, Ditch Inspector appeared before the Board with two items.

The Board directed staff to move forward with scheduling a public hearing on County Ditch 40 and County Ditch 46 to discuss a potential record correction, redetermination of benefits and repairs.

Dave Tiegs, Highway Engineer appeared before the Board with several items.

Dave presented the 2017 Highway Annual Report to the Board for review.

On motion by Rohlfling, seconded by Gliszinski and unanimously approved, the Board approved and authorized the County Administrator to sign an Advance Funding Resolution for Le Sueur County State Aid Highway Projects in an amount up to \$269,402.21

On motion by King, seconded by Gliszinski and unanimously approved, the Board approved the contracts for SAP 040-605-009 with Max Johnson Construction.

On motion by Rohlffing, seconded by King and unanimously approved, the Board approved to set the bid date for SP 040-070-005 (HSIP Rumble Striping) for Friday, July 13th at 1:00 p.m.

Cindy Westerhouse, HR Director appeared before the Board with several items for discussion and approval.

On motion by Rohlffing, seconded by Gliszinski and unanimously approved, the Board approved to hire Leslie Heilman as a full time Agency Social Worker in Human Services as a Grade 11, Step 4 at \$27.24 per hour, effective June 18, 2018.

On motion by King, seconded by Rohlffing and unanimously approved, the Board approved to hire Alisha Lager as a full time Agency Social Worker in Human Services as a Grade 11, Step 4 at \$27.24 per hour, effective June 25, 2018.

County Administrator Darrell Pettis appeared before the Board with several items for discussion and approval.

On motion by Rohlffing, seconded by Gliszinski and unanimously approved, the Board approved the proposal from Hildi, Inc. in the amount of \$2,400 for GASB Statement 75 Actuarial Services.

On motion by King, seconded by Gliszinski and unanimously approved with Rohlffing abstaining, the Board approved to set a West Jefferson Subordinate Service Ordinance Public Hearing for Tuesday, July 3, 2018 at 10:00 a.m.

On motion by Gliszinski, seconded by King and unanimously approved, the Board approved to set a Sulp Ordinance Public Hearing for Tuesday, July 3, 2018 at 10:15 a.m.

Commissioner Committee Reports:

Commissioner Rohlffing attended an annual German-Jefferson meeting and an MRCI meeting.

Commissioner Gliszinski attended a Justice Center progress meeting.

Commissioner King attended a Justice Center progress meeting.

Commissioner Wetzel was in Washington D.C. last week.

On motion by Gliszinski, seconded by Rohlffing and unanimously approved, the following claims were approved for payment:

| Warrant # | Vendor Name | Amount |
|------------------|-------------------------|--------------------|
| 50147 | Access Unlimited | \$ 6,500.00 |

| | | |
|-------|------------------------------------|--------------|
| 50153 | Baker, Tilly, Virchow & Krause LLP | \$ 4,103.00 |
| 50154 | Beer Oil & Tire | \$ 2,240.96 |
| 50157 | Blue Earth County | \$ 3,487.21 |
| 50158 | Bolton & Menk Inc. | \$ 7,032.50 |
| 50160 | Braith Excavating Inc. | \$ 2,272.00 |
| 50161 | Brock White Co. LLC | \$ 14,196.64 |
| 50167 | Contech Engineered Solutions LLC | \$ 11,103.84 |
| 50172 | Diamond Mowers Inc. | \$ 3,153.88 |
| 50175 | Election Systems & Software Inc. | \$ 7,247.38 |
| 50182 | Havel Land Improvement Inc. | \$ 2,180.00 |
| 50186 | I & S Group Inc. | \$ 2,546.00 |
| 50187 | Independent Emergency Services | \$ 7,403.21 |
| 50215 | Rinke-Noonan Law Firm | \$ 4,733.00 |
| 50218 | Robinson Appraisal & Assoc. Inc. | \$ 5,500.00 |
| 50226 | S.M.C. Co. Inc. | \$ 22,825.31 |
| 50232 | Summit | \$ 8,211.75 |
| 50233 | Thomson Reuters | \$ 2,061.24 |
| 50254 | Ziegler Inc. | \$ 33,322.53 |
| 89 | Claims paid less than \$2,000.00: | \$ 30,879.01 |
| 19 | Claims paid more than \$2,000.00: | \$150,120.45 |
| 108 | Total all claims paid: | \$180,999.46 |

On motion by King, seconded by Rohlring and unanimously approved, the Board adjourned until Tuesday, June 19, 2018 at 9:00 a.m.

ATTEST:

Le Sueur County Administrator

Le Sueur County Chairman

Summary Minutes of Le Sueur County Board of Commissioners Meeting, June 5, 2018

•This is only a summary publication per MN Statutes 375.12 and 331A.01 sub. 10. The complete minutes are on file in the Le Sueur County Administrator's Office at 88 S Park Ave. Le Center, MN and are available at www.co.le-sueur.mn.us.

- Approved the agenda. (Gliszinski-King)
- Approved the consent agenda. (Rohlfing-Gliszinski)
- Approved Human Services claims: Financial \$ 67,456.53 and Soc Services \$ 78,906.99 (King-Rohlfing)
- Approved an Advance Funding Resolution for Le Sueur County State Aid Highway Projects (Rohlfing-Gliszinski)
- Approved the contracts for SAP 040-605-009 with Max Johnson Construction. (King-Gliszinski)
- Approved to set the bid date for SP 040-070-005 for Friday, July 13th at 1:00 p.m. (Rohlfing-King)
- Approved to hire Leslie Heilman in Human Services. (Rohlfing-Gliszinski)
- Approved to hire Alisha Lager in Human Services. (King-Rohlfing)
- Approved the proposal from Hildi, Inc. for GASB Statement 75 Actuarial Services. (Rohlfing-Gliszinski)
- Approved to set a West Jefferson Subordinate Service Ordinance Public Hearing for Tuesday, July 3, 2018 at 10:00 a.m. (King-Gliszinski)
- Approved to set a Sulp Ordinance Public Hearing for Tuesday, July 3, 2018 at 10:15 a.m. (Gliszinski-King)
- The following claims were approved for payment: (Gliszinski-Rohlfing)

| Warrant # | Vendor Name | Amount |
|-----------|------------------------------------|--------------|
| 50147 | Access Unlimited | \$ 6,500.00 |
| 50153 | Baker, Tilly, Virchow & Krause LLP | \$ 4,103.00 |
| 50154 | Beer Oil & Tire | \$ 2,240.96 |
| 50157 | Blue Earth County | \$ 3,487.21 |
| 50158 | Bolton & Menk Inc. | \$ 7,032.50 |
| 50160 | Braith Excavating Inc. | \$ 2,272.00 |
| 50161 | Brock White Co. LLC | \$ 14,196.64 |
| 50167 | Contech Engineered Solutions LLC | \$ 11,103.84 |
| 50172 | Diamond Mowers Inc. | \$ 3,153.88 |
| 50175 | Election Systems & Software Inc. | \$ 7,247.38 |
| 50182 | Havel Land Improvement Inc. | \$ 2,180.00 |
| 50186 | I & S Group Inc. | \$ 2,546.00 |
| 50187 | Independent Emergency Services | \$ 7,403.21 |
| 50215 | Rinke-Noonan Law Firm | \$ 4,733.00 |
| 50218 | Robinson Appraisal & Assoc. Inc. | \$ 5,500.00 |
| 50226 | S.M.C. Co. Inc. | \$ 22,825.31 |
| 50232 | Summit | \$ 8,211.75 |
| 50233 | Thomson Reuters | \$ 2,061.24 |
| 50254 | Ziegler Inc. | \$ 33,322.53 |
| 89 | Claims paid less than \$2,000.00: | \$ 30,879.01 |
| 19 | Claims paid more than \$2,000.00: | \$150,120.45 |
| 108 | Total all claims paid: | \$180,999.46 |

- Adjourned until Tuesday, June 19, 2018 at 9:00 a.m. (King-Rohlfing)

ATTEST: Le Sueur County Administrator Le Sueur County Chairman

Board of Equalization Minutes Tuesday, June 12, 2018

The Le Sueur County Board of Equalization met in special session on Tuesday, June 12th, 2018 at 6:30 p.m. in the Courthouse at Le Center, Minnesota. Those members present were: Lance Wetzel, John King, David Gliszinski and Steve Rohlring. Joe Connolly was excused. Also present were Assessor Shayne Bender, Auditor-Treasurer Pam Simonette and County Administrator Darrell Pettis.

Darrell Pettis called the 2018 Board of Equalization to order and issued the oath to the Equalization Board.

Darrell Pettis then called for nominations for Chairman. Commissioner Rohlring nominated Wetzel for Chairman, seconded by King and unanimously approved, nominations ceased and Wetzel was elected Chairman of the 2018 Board of Equalization.

Commissioner Gliszinski nominated King for Vice Chairman, seconded by Rohlring and unanimously approved, nominations ceased and King was elected Vice Chair of the 2018 Board of Equalization.

Shayne Bender, County Assessor gave an overview of the process and the work that has been done in his office to prepare for the 2018 Board of Equalization.

Having no persons to come before the Board, on motion by Gliszinski, seconded by Rohlring and unanimously approved, the Board accepted the recommendations of the County Assessor and ordered the following 2018 parcel assessment changes:

| Property Owner | Parcel # | Valuation Appeals | | | Classification Appeals | | Reason |
|---------------------------|-------------|--------------------|-----------------|--------------------------|------------------------|-------------|-----------------------|
| | | Assessor Total EMV | Board Total EMV | Change (+/-) in EMV (\$) | Assessor Class | Board Class | Explanation Of Change |
| Mike & Kris Holicky | 01.008.2600 | | | | Res. | Ag. | Intensive Ag. |
| James & Becky Ness | 01.650.0220 | 317,400 | 313,000 | -4,400 | | | Interior Inspection |
| Thomas & Jean Jensen | 08.018.5000 | 275,300 | 192,900 | -82,400 | | | Interior Inspection |
| Tonya Pomije | 08.025.9150 | 369,600 | 317,800 | -51,800 | | | Interior Inspection |
| Luann Leach | 20.433.0270 | 300,100 | 275,000 | -25,100 | | | Interior Inspection |
| Kenneth & Phyllis Kiemele | 21.412.0140 | 193,300 | 189,500 | -3,800 | | | Interior Inspection |
| Helen Edel | 22.470.0490 | 106,400 | 73,400 | -33,000 | | | Interior Inspection |
| Fred Braegelmann | 22.643.0010 | 58,300 | 56,000 | -2,300 | | | Reviewed with Owner |
| Fred Braegelmann | 22.643.0020 | 1,055,500 | 786,400 | 269,100 | | | Reviewed with Owner |

On motion by Gliszinski, seconded by Rohlring and unanimously approved, the Board adjourned at 7:05 p.m.

ATTEST:

Le Sueur County Administrator

Le Sueur County Chairman

**Board of Equalization Summary Minutes
Tuesday, June 12, 2018**

•This is only a summary publication per MN Statutes 375.12 and 331A.01 sub. 10. The complete minutes are on file in the Le Sueur County Administrator’s Office at 88 S Park Ave. Le Center, MN and are available at www.co.le-sueur.mn.us.

•Approved to nominate and elected Wetzel as Chairman of the 2018 Board of Equalization. (Rohlfing-King)

•Approved to nominate and elected King as Vice Chair of the 2018 Board of Equalization. (Gliszinski-Rohlfing)

•Approved the following 2018 parcel assessment changes: (Gliszinski-Rohlfing)

| Property Owner | Parcel # | Valuation Appeals | | | Classification Appeals | | Reason |
|---------------------------|-------------|--------------------|-----------------|--------------------------|------------------------|-------------|-----------------------|
| | | Assessor Total EMV | Board Total EMV | Change (+/-) in EMV (\$) | Assessor Class | Board Class | Explanation Of Change |
| Mike & Kris Holicky | 01.008.2600 | | | | Res. | Ag. | Intensive Ag. |
| James & Becky Ness | 01.650.0220 | 317,400 | 313,000 | -4,400 | | | Interior Inspection |
| Thomas & Jean Jensen | 08.018.5000 | 275,300 | 192,900 | -82,400 | | | Interior Inspection |
| Tonya Pomije | 08.025.9150 | 369,600 | 317,800 | -51,800 | | | Interior Inspection |
| Luann Leach | 20.433.0270 | 300,100 | 275,000 | -25,100 | | | Interior Inspection |
| Kenneth & Phyllis Kiemele | 21.412.0140 | 193,300 | 189,500 | -3,800 | | | Interior Inspection |
| Helen Edel | 22.470.0490 | 106,400 | 73,400 | -33,000 | | | Interior Inspection |
| Fred Braegelmann | 22.643.0010 | 58,300 | 56,000 | -2,300 | | | Reviewed with Owner |
| Fred Braegelmann | 22.643.0020 | 1,055,500 | 786,400 | 269,100 | | | Reviewed with Owner |

•Adjourned at 7:05 p.m.(Gliszinski-Rohlfing)

ATTEST: Le Sueur County Administrator

Le Sueur County Chairman



Le Sueur County, MN

Tuesday, June 19, 2018

Board Meeting

Item 2

9:05 a.m. Claims (5 min)

Staff Contact:



Le Sueur County, MN

Tuesday, June 19, 2018

Board Meeting

Item 3

9:10 a.m. Human Services (35 min.)

Staff Contact:

**Human Services Board Agenda
June 19, 2018 @ 9:10 a.m.**

100- INFORMATION/PRESENTATIONS:

- 110 - New Employee Introduction -
 - Anna Schwichtenberg, Office Support Specialist, Sr.
- 120 - Updated Human Services Organizational Chart
- 130 - "Yellow Line Project" Update
- 140 - Regional Crisis Line Update

200- CHARTS/GRAPHS:

- 210- Finance Graphs/Report;
- 220- Income Maintenance/Child Support Graphs;
- 230- Family Services Graphs-
 - 231- Social Services Team
 - 232- Child Services Team
 - 232.1- Out of Home Placement Report
 - 232.2- In-Home Family Therapy Report;
 - 233- Behavioral Health Team

300- BOARD APPROVAL ITEMS:

- 310 - Commissioner's Warrants



Le Sueur County, MN

Tuesday, June 19, 2018

Board Meeting

Item 4

9:45 a.m. Jim McMillen (15 min)

RE: VIA

RE: Justice Center Radio System

Staff Contact:

Neisen, Jeff

From: Missy Johnson <MissyJohnson@tierneybrothers.com>
Sent: Friday, June 08, 2018 2:42 PM
To: Neisen, Jeff
Subject: RE: Demo Product

Jeff here are the list prices for the Collage, Connect Plus and Connect Pro. The Plus just came out.

Collage \$3600
Connect Plus \$1595
Connect Pro \$995

Compares the Campus to the Plus and Pro https://k.kramerav.com/downloads/pdf/via/VIA_Features_Table_March2018.pdf

Plus is the only one with a HDMI Input. The Pro and Plus a exactly the same except for the HDMI input.

The Campus add on gives you.

- Windows PC Platform
- Recording
- Polling
- Web Browser
- Third Party Apps
- 4K output
- Unified Communications
- Customizable Screen
- 60GB Campus storage vs 32GB Connect Pro and Plus
- Campus can show 6 users per screen and the Plus and Pro can show 4 per screen

Board Room
Human Services
Service
EOL x 2
Roll Call 1
672CF Conf (5)?
Current

Kramer is in the process of discontinuing the Collage the only real difference between the Campus and Collage is the HDMI and VGA Input.

Campus pricing. Savings

Qty 1-3
\$1894.34ea *\$0 Savings*

Qty 4-10
\$1759 ea *\$135.34 per unit*

Qty 11-16
\$1699 ea *\$195.34 per unit (11 saves 2148 74)*

Qty 17+
\$1549 ea

Via Pad \$100 ea
Rack Mount \$109 ea

Missy Johnson | Tierney

missyjohnson@tierneybrothers.com

P: 612-455-3865 | F: 612-331-3424

From: Missy Johnson

Sent: Friday, June 1, 2018 7:01 PM

To: 'Neisen, Jeff' <jneisen@co.le-sueur.mn.us>

Subject: RE: Demo Product

That's no problem Jeff. They do give us a 30 day window but I usually say 2 weeks do to transit times and the shorter the window the less chance it gets forget.

I am at a trade show next week but will be online from time to time if you need help feel free to call into our tech service department at 800.933.7337

Missy Johnson | Tierney

missyjohnson@tierneybrothers.com

P: 612-455-3865 | F: 612-331-3424

From: Neisen, Jeff [<mailto:jneisen@co.le-sueur.mn.us>]

Sent: Thursday, May 31, 2018 8:39 AM

To: Missy Johnson <MissyJohnson@tierneybrothers.com>

Cc: IT <IT@co.le-sueur.mn.us>

Subject: Demo Product

With the holiday week and needing to order a few additional adapters/splitters/etc to test this properly with our current board room setup, would it be possible to get this through the end of next week? I'm out the following 2 weeks, so we will know what the status is by end of next week.

Jeff Neisen

Le Sueur County

IT Director

507-357-8101

jneisen@co.le-sueur.mn.us



VIA Campus/
VIAware VIA Connect
PLUS VIA Connect
PRO VIA GO

| | | | | | |
|--|--|---|---|---|---|
| | <p>Wireless Connection BYOD connectivity from any PC, Mac, Chromebook, or iOS & Android device</p> | ✓ | ✓ | ✓ | ✓ |
| | <p>Powerful Content Security User authentication, 1024-bit data encryption, dynamic room code</p> | ✓ | ✓ | ✓ | ✓ |
| | <p>Mobile Mirroring Show any content from your iOS, Android or Chromebook device on the main display</p> | ✓ | ✓ | ✓ | ✓ |
| | <p>Full HD Video Streaming Stream uninterrupted full-HD wireless video (up to 1080p60), images and documents in the room or from a remote location</p> | ✓ | ✓ | ✓ | ✓ |
| | <p>Integrated YouTube Player Create playlists, share videos or drag and drop any YouTube clip to your VIA app for seamless video playback</p> | ✓ | ✓ | ✓ | ✓ |
| | <p>Do Not Disturb (DND) Give the presenter complete control by disabling collaboration features</p> | ✓ | ✓ | ✓ | ✓ |
| | <p>Customizable Features Enable or disable features based on need</p> | ✓ | ✓ | ✓ | ✓ |
| | <p>VIA Pad Compatible Touch-and-Present USB device for laptops</p> | ✓ | ✓ | ✓ | ✓ |
| | <p>VIA Site Management (VSM) Monitor, control and get actionable analytics from all VIA devices on the network; schedule firmware updates, and more</p> | ✓ | ✓ | ✓ | ✓ |












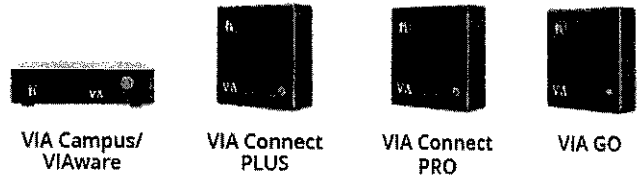
VIA Campus/
VIAware

VIA Connect
PLUS

VIA Connect
PRO

VIA GO

| | VIA Campus/ VIAware | VIA Connect PLUS | VIA Connect PRO | VIA GO |
|--|------------------------|---------------------|--------------------|--------|
|  Digital Signage (available as an optional license) Display dynamic content on the main display during meeting downtime | ✓ | ✓ | ✓* | ✓ |
|  Streaming Output Stream all collaboration activity from the main display to any H264 decoder | ✓ | ✓ | ✓* | |
|  View Main Display View the main display on your own device | ✓ | ✓ | ✓ | |
|  File Storage Drag and drop files to the Files folder to share instantly with other users | ✓ | ✓ | ✓ | |
|  File Sharing Share any size file with any number of participants | ✓ | ✓ | ✓ | |
|  Whiteboard Annotate, illustrate and edit shared documents: touch-screen compatible | ✓ | ✓ | ✓ | |
|  Chat Send an instant message to another participant | ✓ | ✓ | ✓ | |
|  Enable Control Give a participant control over a presenter's Mac or PC laptop; enable collective document editing | ✓ | ✓ | ✓ | |
|  Windows PC Operating Platform Can be used as an in-room Windows PC with full Windows capabilities | ✓ | | | |



| | VIA Campus/ VIAware | VIA Connect PLUS | VIA Connect PRO | VIA GO |
|---|------------------------|---------------------|--------------------|--------|
|  Recording Record an entire VIA video and audio session to a local video file | ✓ | | | |
|  Native ePolling Offer custom e-Polling to users and produce reports | ✓ | | | |
|  Web Browser Access any web browser and display content from any website | ✓ | | | |
|  Third Party Apps Support for office and conferencing applications such as Microsoft Office®, Skype™ for Business, GotoMeeting®, and WebEx® | ✓ | | | |
|  4K-UHD Output Present 4K-UHD content to compatible 4K-UHD displays | ✓ | | | |
|  Unified Communications Combine chat, video conferencing, team collaboration, and more in one platform | ✓ | | | |
|  HDMI Input Connect any HDMI source (camera, media player, PC) and present it on the main display | | ✓ | | |
|  Customizable Screen Layout Determine how single or multiple presenter screens appear on your main display | ✓ | | | |

PSC Alliance Inc.

7900 International Dr – Suite 300
Bloomington, MN 55425
e-mail: jeff.nelson@psc Alliance.com

MEMORANDUM

Telephone (612) 216-1502
FAX (888) 384-9171

DRAFT

To: Sheriff Brett Mason, Le Sueur County
cc: Jeff Neisen, IT Director

From: Jeff Nelson

Re: Radio System Design Options at Justice Center

Date: June 18, 2018

Sheriff,

As you are already aware from recent meetings and discussions, the topic of whether a new radio tower is needed at the justice center has been extensively analyzed. As construction progresses on the new justice center complex, a decision concerning the radio tower construction now needs to be made. We understand that there are no current plans to dismantle the County's existing radio tower at 88 S. Park Avenue and that the County intends to preserve and continue to conduct business operations from the historic jail building.

Since 2012 Le Sueur County's primary public safety radio communications have been conducted using the ARMER¹ network. Using ARMER the County presently links its dispatch operations at the LEC, via microwave radio, to a series of remote sites. Recent project discussions have explored connecting the new justice center to two remote ARMER sites within the County via "dark"² fiber optic cable as a substitute for microwave radio links. Those same discussions have also explored linking the justice center to the courthouse and old jail via fiber which would allow remote control of antennas now affixed to the existing radio tower.

County staff contacted Jaguar Communications of Owatonna concerning lease costs for dark fiber. (Jaguar already has an extensive network of fiber optical cable distributed within Le Sueur County.) As negotiations with Jaguar have progressed, we believe that the feasibility of using dual routed fiber, for redundancy, from the historic jail to the new justice center make this alternative technically viable and allow for cost containment.

Representatives from the BKV Group (architectural team) have estimated the budgetary cost of planning and erecting a new tower at the Justice Center at approximately \$318,000. The one-time equipment/installation and recurring costs of fiber compare favorably and offer similar reliability with costs summarized in the table below. From meetings with the project team we also understand that a previously identified and proposed secondary use of a new tower at the Justice Center is to support two elevated amateur ("ham") radio antennas. Suitable technology exists that would also allow for remote control of ham radio equipment, installed at the old jail, with antennas affixed to the existing tower, using fiber optic links.

-continued-

-
- 1 ARMER is Allied Matrix for Emergency Response (a statewide public safety 2-way radio system).
 - 2 Dark fiber typically refers to fiber leased from a provider which is then "lit" by the user, using equipment furnished by the user, to connect locations together and establish communications pathways.

Technology Consulting

Suitable partitioning of traffic on the fiber, to separate the public safety traffic from the ham radio traffic is easily accomplished. Existing high frequency radio base station equipment now used by the ham operators may need to be replaced to allow remote control as described here.

We also take this opportunity to point out that the existing microwave radio links will reach the end of their support life cycle in approximately 2022. Therefore, the County will confront a decision to retire/replace these links at that time if a fiber connection strategy is not implemented. Replacement cost estimated using 2022 dollars, for two existing links of microwave radio equipment is forecast at \$150,000.

The financial aspects of establishing redundant fiber optic links used to support radio communications between the new justice center, the old jail, and two remote ARMER tower sites are as follows:

| Description | Cost |
|---|-------------------|
| Fiber construction to MnDOT Wild Creek ARMER tower | \$ 39,000 |
| Fiber construction to Le Sueur water tank (ARMER site) | \$ 27,000 |
| Fiber Loop construction from Justice Center to Old Jail | \$ 47,000 |
| Fiber optic end-point equipment for radio | \$ 21,000 |
| Fiber optic equipment installation, optimization, commissioning | \$ 18,000 |
| Amateur radio remote controllable, HF radio equipment allowance | \$ 6,000 |
| Subtotal | \$158,000 |
| BKV Estimate for Radio Tower at Justice Center | \$318,000 |
| <i>Avoided cost fiber vs. new radio tower (\$318,000 – \$158,000)</i> | <i>-\$160,000</i> |

Fiber Related Capital Costs

In addition to capital cost, there are also monthly recurring charges to lease the dark fiber from Jaguar. Those cost estimates are shown in the table below:

| Description | Cost 10 Yrs |
|---|------------------------|
| MnDOT Wild Creek Tower – 10 year term \$325/month | \$ 39,000 |
| Le Sueur Water Tank - 10 year term \$325/month | \$ 39,000 |
| Fiber Loop JC to Jail - 10 year term \$325/month | \$ 39,000 |
| Estimated maintenance/support of FOT | \$ 20,000 |
| Subtotal | \$137,000 |

Monthly Recurring Fiber Lease Costs

Summary

There are still some open technical logistics to be worked out with Jaguar if the County Board approves substituting fiber optic connections to support radio communications from the new Justice Center to the old jail/existing tower. Therefore, the purpose of this memo is to seek agreement-in-principle for the concepts set forth above. We believe that Jaguar’s lease and construction costs are “in the ballpark” but await their final written confirmation as this memo is prepared.

Le Sueur Water tower - Public Safety Tower

Sueur

Lexington

Courthouse

435 Derrynane - New Justice Center

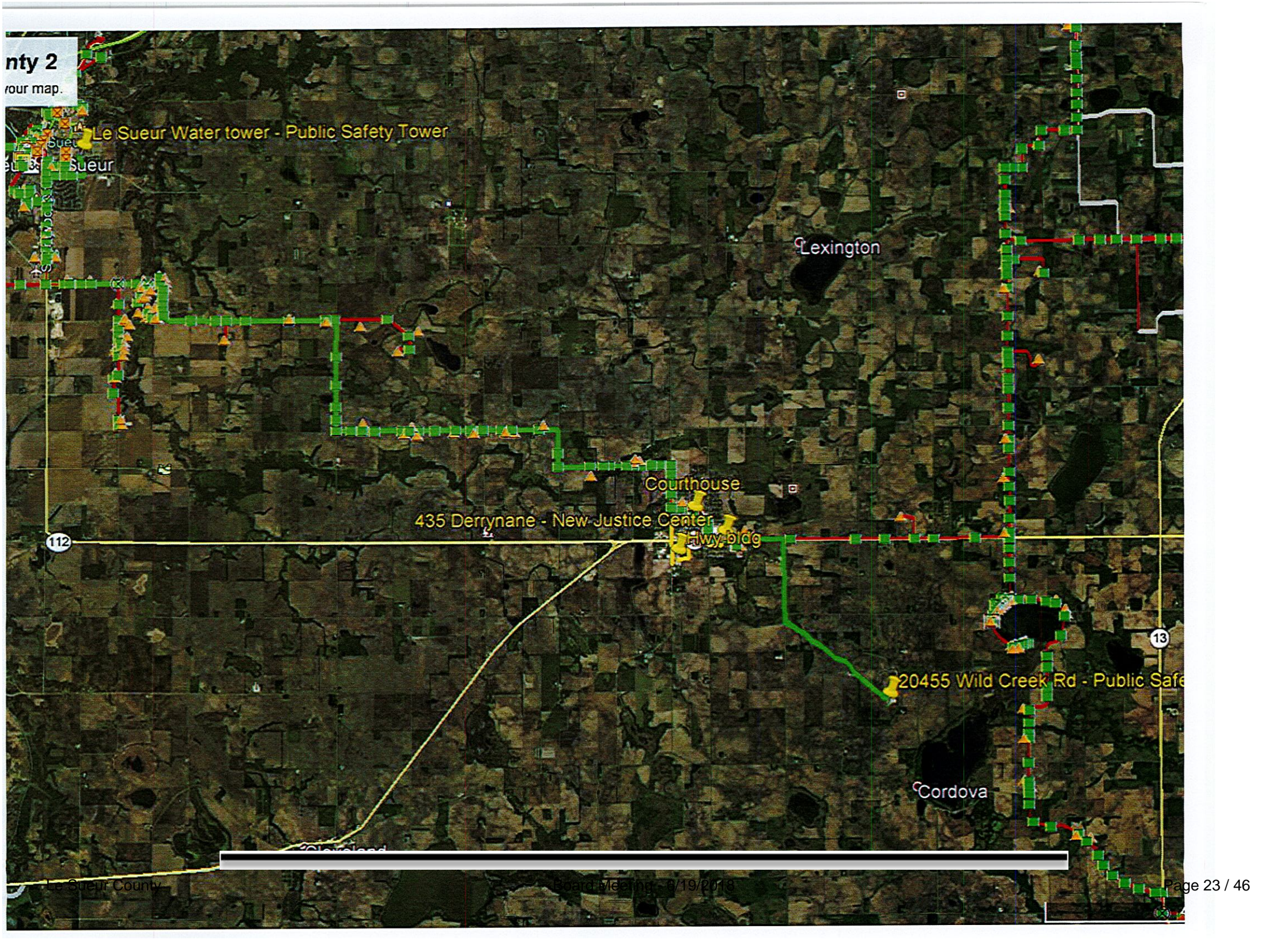
Hwy bldg

20455 Wild Creek Rd - Public Safe

Cordova

112

13



REVISED FIBER ROUTE

Submitted by Le Sueur County IT and Maintenance Division

Le Sueur County

Road Centerlines

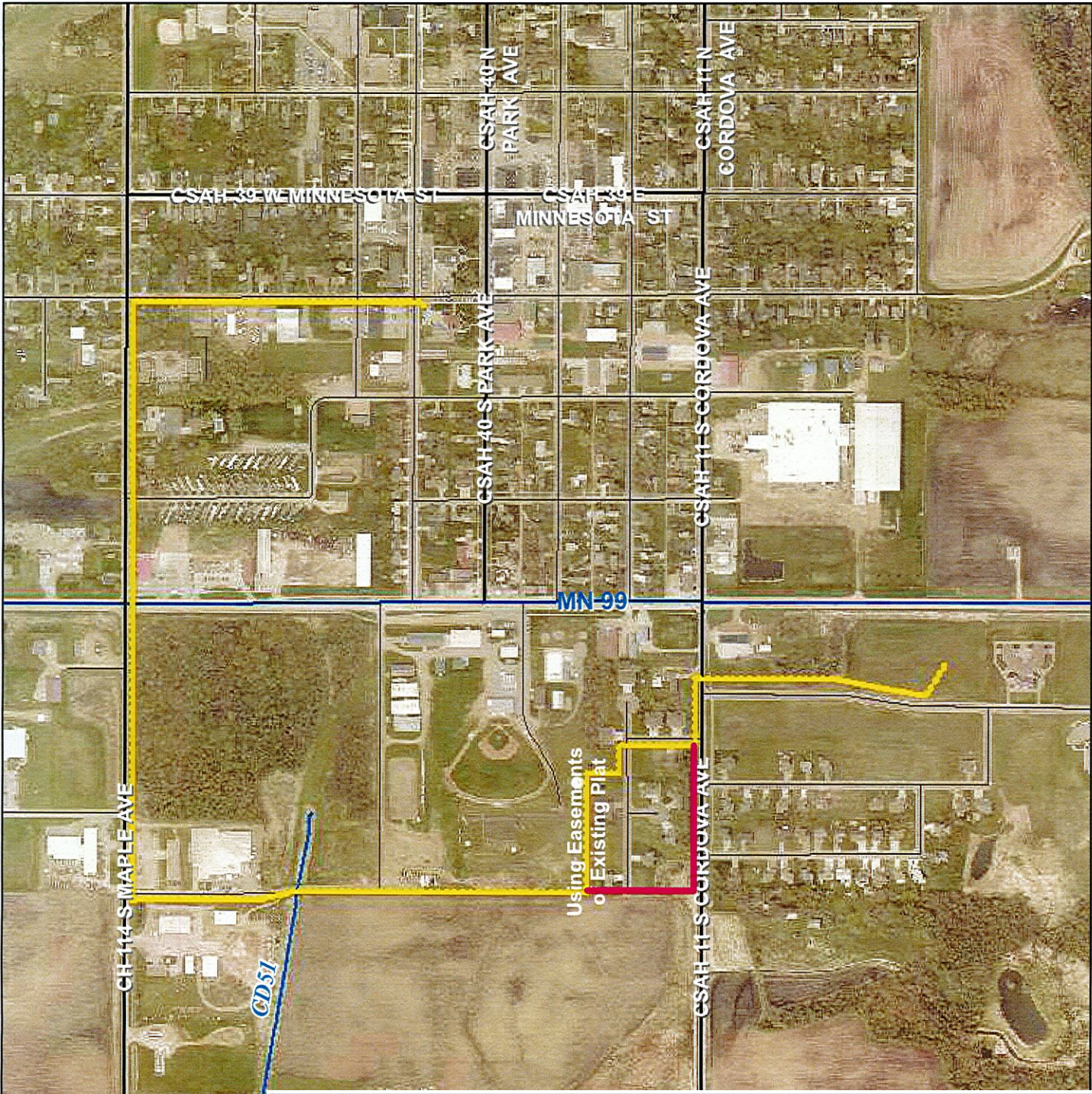
RDCODE

- MN Highway
- CSAH; County Road; Ramp
- Municipal Street

County Ditch

Type

- MAIN



YELLOW = Proposed Fiber Route.
 - Using existing easements for Wood Edge Sub.

PINK = Alternate Fiber Route
 - If granted easement O.L. B in Woods Edge Sub

Coordinate System: NAD 1983 HARN Adj MN Le Sueur Feet
 Projection: Lambert Conformal Conic
 Datum: NAD 1983 HARN Adj MN Le Sueur
 False Easting: 500,000.0000
 False Northing: 100,000.0000
 Central Meridian: -93.1333
 Standard Parallel 1: 44.3000
 Standard Parallel 2: 44.3667
 Latitude Of Origin: 44.1947
 Units: Foot US





Service Level Agreement for Customer xxxxx

- Jaguar or contract trained and qualified maintenance personnel will be available for dispatch twenty-four (24) hours a day, seven (7) days a week.
- Subject to delay caused by Force Majeure, Jaguar shall respond to any emergency unscheduled maintenance required for the customer fibers within two (2) hours after becoming aware of the need for same.
- Jaguar will use commercially reasonable efforts to complete any emergency unscheduled maintenance within four (4) hours after being made aware of the event.
- To meet above objective, it is acknowledged that the repairs so affected may be temporary in nature. In such event, promptly after completion of Emergency Unscheduled Maintenance, Jaguar will commence its planning for permanent repair, and thereafter promptly implement permanent repair within an appropriate time thereafter.
- In the event of a cut fiber, the objective of Jaguar’s maintenance personnel is restoring operating capability in as little time as possible; and, the Jaguar maintenance vehicles will be outfitted with the typically appropriate equipment for temporary splicing.
- **Speed Guarantee:** Customer contracted for 50/50 fiber internet. Speed will be measured by customer running a browser-based speed test from a single computer accessing the internet through the Jaguar-provided internet connection, testing from the URL speedtest.jagcom.net. If there are 3 consecutive results, run 1-2 minutes apart, of less than 90% of the subscribed speed, screen captures of those speed tests should be emailed to support@jagcom.net with a request to open a ticket on slow speeds. Jaguar technical support will confirm that the speed test server is functioning properly and will perform normal troubleshooting to isolate whether the limitations are from the Jaguar network or the Customer's network. For each day that there are any confirmed events of speed test results of less than 90% of the subscribed speed, a 10% credit can be requested by the customer, referencing the ticket number under which that event was reported.
- **Outage Credit:** Customer will be entitled to outage credits on a monthly basis, to be measured from the time an outage is reported or discovered until the problem is corrected, as follows

| More Than (Hours) But Less Than (Hours) | Customer Credit of Monthly Charges |
|---|------------------------------------|
| 0 4 | 0% |
| 4 6 | 25% |
| 6 8 | 50% |
| 8 10 | 75% |
| 10 12+ | 100% |

- **Right to Terminate:** Customer may terminate the Telecommunication Service Agreement without penalty if Jaguar’s service does not meet the Speed Guarantee herein for thirty (30) consecutive days, provided that Customer complied with the provisions herein for each of said thirty (30) days.

Customer xxxxx
 By: _____
 Name: _____
 Title: _____
 Date: _____

Jaguar Communications, Inc.
 By: _____
 Name: _____
 Title: _____
 Date: _____



**Telecommunications Proposal For
Le Sueur County
June 18, 2018**

Le Sueur County
88 South Park Avenue
Le Center, MN 56057
507-357-8101
jneisen@co.le-sueur.mn.us

Jaguar is pleased to submit the following proposal for telecommunication services to Le Sueur County. For reference, includes as an attachment is a KMZ map file showing the routes described and priced below:

Green routes on the KMZ are the paths to the towers for Public Safety
Yellow is the proposed route to provide a ring through the Justice Center, Courthouse, Old Jail, and Hwy Dept.

2 strands of dark fiber from Justice Center to Le Sueur Water Tower:

| | | |
|-------------------|--|---------------|
| 15 miles total | | |
| 3yr - \$ 525 MRC | | \$ 10,000 NRC |
| 5yr - \$ 375 MRC | | \$ 10,000 NRC |
| 10yr - \$ 325 MRC | | \$ 10,000 NRC |

2 strands of dark fiber from Justice Center to Wild Creek Tower:

| | | |
|-------------------|--|---------------|
| 4 miles total | | |
| 3yr - \$ 525 MRC | | \$ 47,000 NRC |
| 5yr - \$ 475 MRC | | \$ 43,000 NRC |
| 10yr - \$ 325 MRC | | \$ 39,000 NRC |

4 strands of dark fiber from Justice Center to Courthouse to Old Jail to Highway Building back to Justice Center:

| | | |
|-------------------|--|---------------|
| 3 miles total | | |
| 3yr - \$ 525 MRC | | \$ 47,000 NRC |
| 5yr - \$ 475 MRC | | \$ 43,000 NRC |
| 10yr - \$ 325 MRC | | \$ 39,000 NRC |

Notes:

Included in quoted price is all construction, splicing, testing, and ongoing maintenance and repair. Route and pricing for ring is proposed/budgetary pending final agreement of the full path. Proposed route for ring would require an easement from Le Sueur County to build fiber from W. Bradshaw St. to Hwy 99 along west

213 South Oak Avenue, Owatonna, MN 55060 | 507-214-1000 | 800-250-1517
www.jaguarcommunications.com



Le Sueur County, MN

Tuesday, June 19, 2018

Board Meeting

Item 5

10:00 a.m. Dave Tiegs (10 min)

Staff Contact:

Highway Department Agenda Items

Tuesday, June 19th, 2018 County Board Meeting:

- 1.) 2017 Annual Report
- 2.) Request for Approval of Bid Letting Date for CR 115 Bridge Deck Repair
- 3.) Introduce: Nathan Olson, Assistant Highway Engineer



Le Sueur County, MN

Tuesday, June 19, 2018

Board Meeting

Item 6

10:10 a.m. Closed Session (10 min)

RE: To develop offer to purchase real property, parcel 01.103.7600 MN Stat. 13D.05 (3) (c) (3)

Staff Contact:



Le Sueur County, MN

Tuesday, June 19, 2018

Board Meeting

Item 7

10:20 a.m. Human Resources (5 min)

Staff Contact:



Human Resources

88 SOUTH PARK AVENUE • LE CENTER, MINNESOTA 56057
Telephone: 507-357-8517 • Fax: 507-357-8607
Cindy Westerhouse – Human Resources Director

HUMAN RESOURCES AGENDA ITEMS June 19, 2018

Recommendation to grant regular status to Hector Macias, full time Community Service Aide – Interpreter in Human Services, effective June 18, 2018. Hector has completed the six-month probationary period.

Recommendation to grant regular status to Joshua Mankowski, full time Environmental Planning and Zoning Administrator in Planning and Zoning, effective June 11, 2018. Joshua has completed the six-month probationary period.

Recommendation to grant regular status to Jose Aguillon, full time Help Desk Supervisor in the Information Technology Department, effective June 11, 2018. Jose has completed the six-month probationary period.

Recommendation to approve a wage adjustment for Jose Aguillon, Help Desk Supervisor in the Information Technology Department, Grade 9, Step 4 at \$24.25 per hour to a Grade 9, Step 6 at \$26.04 per hour, effective June 25, 2018.

Recommendation to promote Audrey Krenik, full time Agency Social Worker in Human Services, Grade 11, Step 7 at \$30.27 per hour to a Team Lead Social Worker in Human Services, Grade 12, Step 7 at \$32.10 per hour, effective June 25, 2018.

Equal Opportunity Employer

Le Sueur County, MN

Tuesday, June 19, 2018

Board Meeting

Item 8

10:25 a.m. Darrell Pettis, County Administrator

RE: West Jefferson Assessment Hearing Date Change

RE: Land Acquisition Notice

RE: FEMA Letter

RE: CD43

RE: Rural Sirens

RE: Justice Center Contracts:

Curb Masters, Inc

Pauly Jail

Thurnbeck Steel

Muska Electric

RTL Construction

Plexus Company dba Culinex

Javens Mechanical

Staff Contact:



June 6, 2018



Le Sueur County Board of Commissioners
c/o Darrell Pettis, County Administrator
Le Sueur County Courthouse
88 South Park Avenue
Le Center, MN 56057

Dear Commissioners,

The Trust for Public Land has received an appropriation from the Legislature as recommended by the Lessard-Sams Outdoor Heritage Council to purchase approximately 54 acres of land in Le Sueur County. In July 2018, we will acquire the property and soon thereafter donate this property to the Minnesota Department of Natural Resources (MNDNR), Division of Wildlife to become an addition to Factor Wildlife Management Area (WMA). The property is located in Kilkenny Township as shown in Exhibit A.

This property is primarily wetland habitat and consists of some agricultural land, which will be restored into prairie. The land will create additional habitat for brushland and wetland wildlife species, will allow additional conservation, wildlife management, and outdoor recreational opportunities, and will provide much needed public access to Factor WMA, which is currently inaccessible by land. The property will become a part of Minnesota's outdoor recreation system available for dispersed, non-motorized wildlife-based recreation such as bird-watching, hunting and trapping.

Whereas, a County Board resolution is required for MN-DNR Wildlife Management Area direct acquisitions, donations of WMA land by conservation groups like The Trust for Public Land utilizing Lessard-Sams Outdoor Heritage (Legacy) Council funding requires County Board notification. As always, State of Minnesota PILT payments will be made to Le Sueur County when this property becomes state WMA land. We are willing to attend an upcoming meeting to answer any questions you may have.

We are excited to add this land to our WMA system. This property has many diverse habitat features important to wildlife populations, wetland conservation, and water quality. If you have any questions, please feel free to call us.

Sincerely,

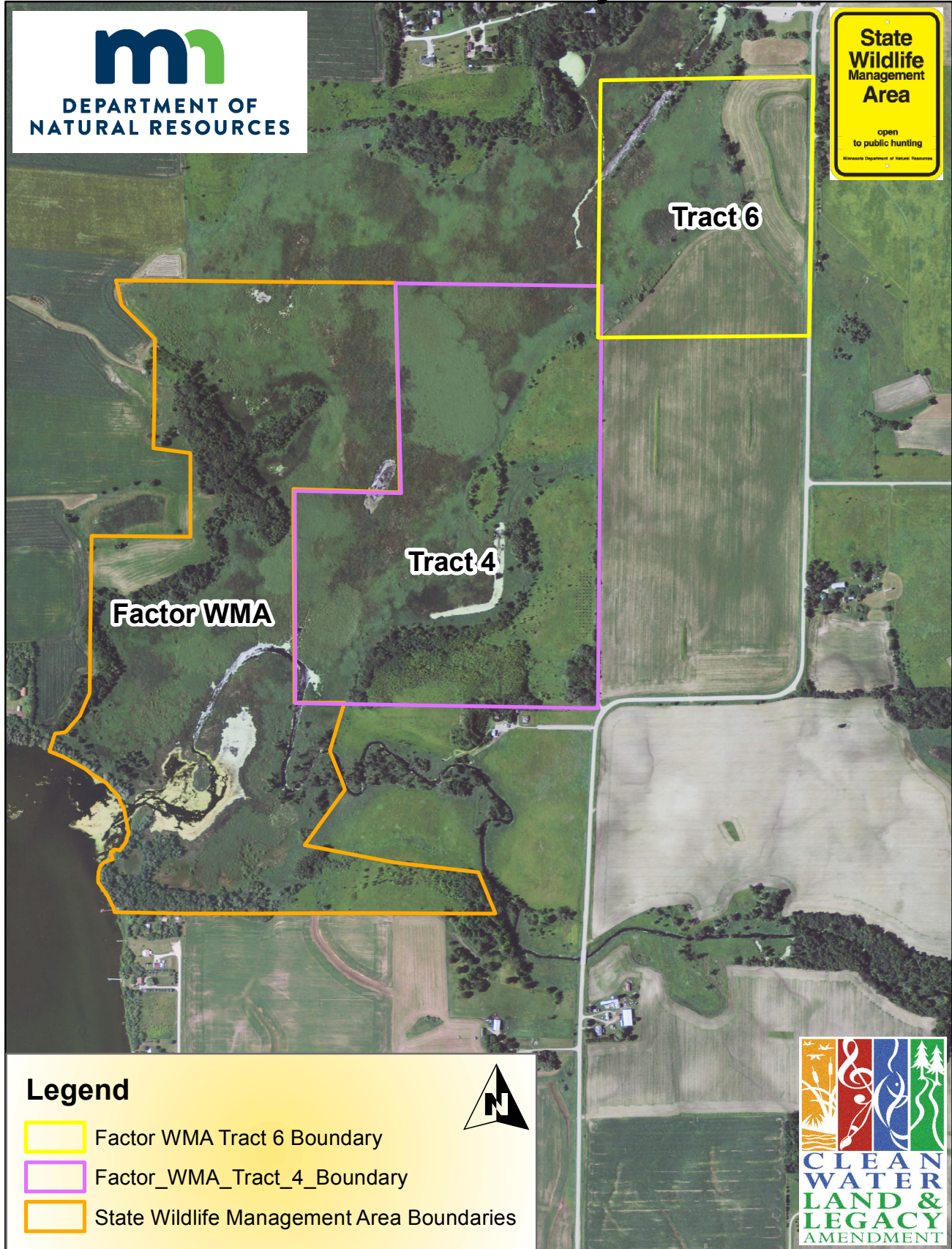
A handwritten signature in black ink, appearing to read "DJ Forbes".

DJ Forbes
Program Manager
The Trust for Public Land
651-999-5325
dj.forbes@tpl.org

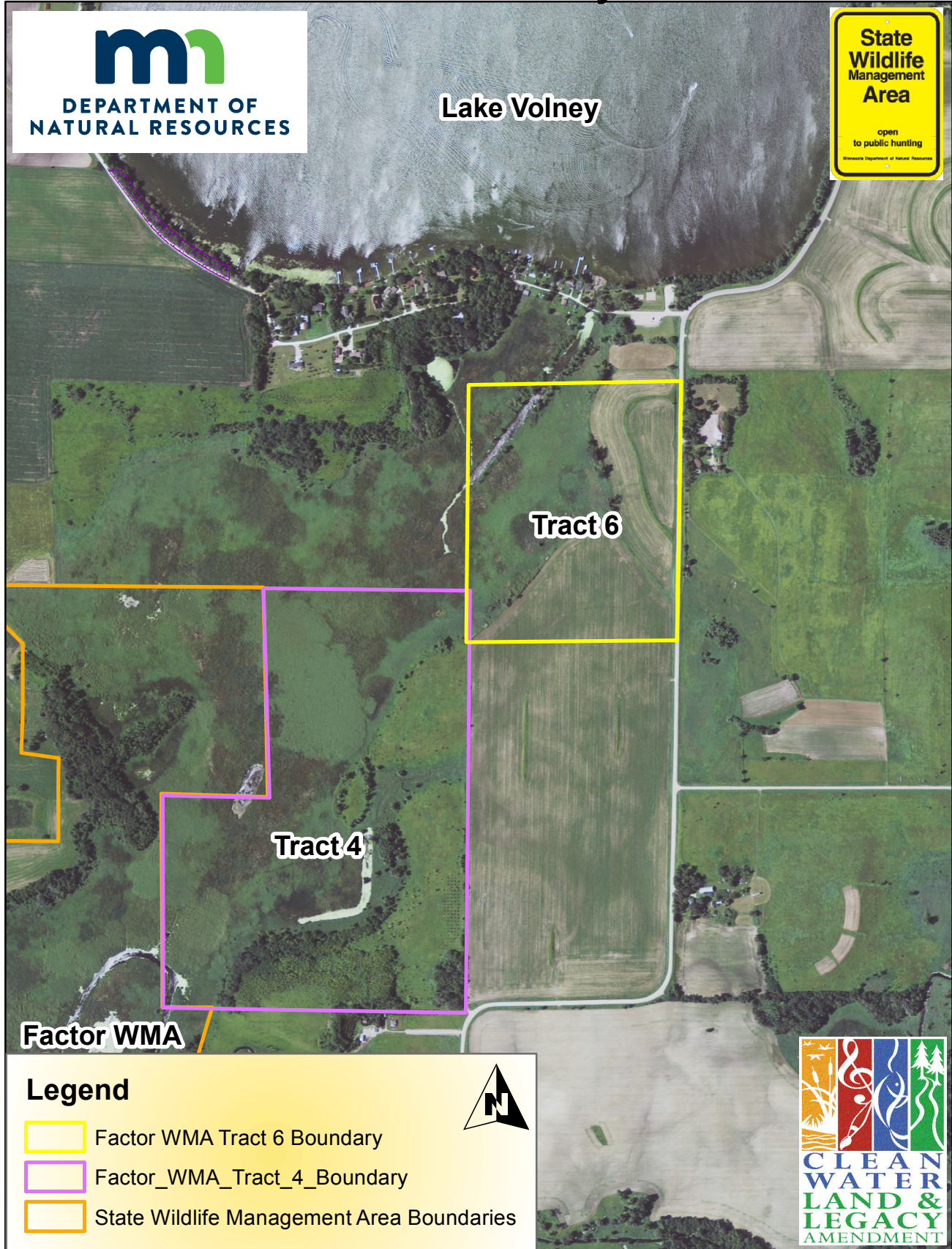
Joe Stangel
Area Wildlife Supervisor
MN DNR
507-359-6031
joseph.stangel@state.mn.us

1

Factor WMA Tracts 6 - 50.3 Acres
Kilkenny Section 6-T110-R23
Le Sueur County



Factor WMA Tracts 6 - 50.3 Acres Kilkenny Section 6-T110-R23 Le Sueur County

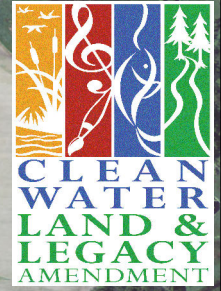


Lake Volney

Tract 6

Tract 4

Factor WMA





FEMA

May 23, 2018

Darrell Pettis
Administrator, Le Sueur County
88 South Park Avenue
Le Center, MN 56057

RE: Flood Risk Review Meeting / Data Submission Notification
Draft Work Maps for Le Sueur County, Minnesota; June 13, 2018

Dear Mr. Pettis,

As you are aware, the Federal Emergency Management Agency (FEMA) has been working on updating the Flood Insurance Rate Map (FIRM) and Flood Insurance Study (FIS) report for Le Sueur County under the Risk Mapping, Assessment, and Planning (Risk MAP) program. FEMA's Chicago Regional office will host a meeting on June 13, 2018 to showcase draft updated work maps for Le Sueur County, Minnesota. We encourage staff and officials representing villages, cities, townships, and county government to participate.

FEMA invites you and your staff to meet with us at the following location:

June 13, 2018
9:00 – 11:00 A.M.
Le Sueur County Environmental Services Building
515 South Maple Ave.
Le Center, MN 56057

This Flood Risk Review meeting is intended to provide an interactive opportunity for you and your technical staff to review your community's draft work maps, ask questions about the engineering methods used to develop the spatial flood risk data, and provide comments and feedback to FEMA. Furthermore, this meeting allows community officials to receive updates on the status and remaining schedule of the Le Sueur County mapping project and begin preparing to communicate with the public about possible changes in flood risk.

At the meeting, multiple sets of draft work maps will be available in hard copy or a digital environment using computer workstations for review of specific areas in Le Sueur County. Additionally, you will be able to access and view the work maps on the FEMA Work Map Data Viewer at the link below (no password is required). To request a CD of the maps and accompanying documents, please contact us by phone or email using the contact information listed at the end of this invitation.

Link to the Work Map Data Viewer:

<http://arcg.is/0m04ay>

Your community will have until 30 days after the Flood Risk Review meeting to review the draft FIRM data and provide comments or additional data that are consistent with prevailing engineering principles to supplement or modify the draft data presented. FEMA will intake and document all input from communities and other technical stakeholders on the work maps through July 13, 2018.

Should you wish to submit a written comment or hard copy data submission on these work maps please use the following addresses:

www.fema.gov

Darrell Pettis
May 23, 2018
Page 2

By email please use: Bradford.Hartley@stantec.com

By regular mail please use: Attn: Bradford Hartley Jr (STARR II)
1500 Lake Shore Drive, Suite 100
Columbus, OH 43204-3800

Please RSVP to this meeting invitation or send requests for additional information to Bradford Hartley by email at Bradford.Hartley@stantec.com, or by phone at (614) 643-4344. Questions can also be referred to Sarah Hayman, engineer for the FEMA Region V Risk Analysis Branch. Ms. Hayman can be reached by email at Sarah.Hayman@fema.dhs.gov, or by phone at (312) 408-5344. We look forward to working with you to increase flood risk awareness and reduce risks to life and property.

Sincerely,



Mary Beth Caruso
Director, Mitigation Division
FEMA Region V

cc: Jennifer Nelson, State Hazard Mitigation Officer, Minnesota Department of Public Safety
Ceil Strauss, State NFIP Coordinator, MN Department of Natural Resources
Suzanne Jiwani, State Mapping Engineer, MN Department of Natural Resources
Sarah Hayman, Project Engineer, FEMA Region V
Bradford Hartley Jr., Project Manager, STARR II
Justin Lutterman, GIS Manager, Le Sueur County GIS
Michelle Mettler, Assistant Administrator, Le Sueur County Environmental Services
Josh Mankowski, Administrator, Le Sueur County Environmental Services, Le Sueur County
Ann Traxler, Emergency Management Director, Le Sueur County Emergency Management

PETITION TO CLEANOUT LE SUEUR COUNTY

DITCH #43

We the undersigned property owners do hereby petition the Le Sueur County Ditch Authority to recommend and request a complete and thorough cleanout of the entire length of County Ditch #43 to its historically established depth, not higher and not lower. We property owners purchased our properties with the expectation that Le Sueur County would fulfill its responsibility and obligation to maintain Ditch #43, to ensure "effectual and permanent drainage of adjacent lands", thus affording us the full use and exercise of our property rights.

Due to Le Sueur County's failure to fulfill its responsibility and the negligence of its obligation to maintain Ditch #43, the current state of said ditch Does Not provide drainage to our properties but rather violates the full use and exercise of our property rights; as well as creates costly repairs to the road surface of Co Rd #11 and serious safety hazard.

NAME

DATE

- | | |
|--|-----------|
| 1. Leo Holuchy ✓ | 5-9-18 |
| 2. Lloyd Tisdale ✓ | 5-9-18 |
| 3. Charles Karasik ✓ | 5-9-18 |
| 4. Joshua R. Egan ✓ | 5-9-18 |
| 5. Mike Volkerant | 5-10-18 |
| 6. Pat Reis | 5-11-18 |
| 7. Lanny Reis ✓ | 5-11-18 |
| 8. Dale Tede | 5/14/18 |
| 9. Jean S. Swanson ✓ | 5-14-18 |
| 10. John Chitt | 5-14-18 |
| 11. [Signature] | 5-14-18 |
| 12. [Signature] ✓ | 5/29/2018 |
| 13. Kevin Sheppler ✓ - Renter of this property - Rusty [Signature] | 5-30-18 |

PETITION TO CLEANOUT LE SUEUR COUNTY

DITCH #43

- 14. Brian Jacobs 5-30-18
- 15. Donald A. Holieby ✓
- 16. M. W. Ham Pasparos ✓ 6-4-18
- 17. air Hay 6-8-18
- 18. _____
- 19. _____
- 20. _____
- 21. _____
- 22. _____
- 23. _____
- 24. _____
- 25. _____
- 26. _____
- 27. _____
- 28. _____
- 29. _____
- 30. _____

0.*C

337.5*+
487.5 +
206. +
176. +
212. +
857.5 +
428.4 +
190.5 +
160. +
300. +
74,520. +
74,520. -
745.2 +
528.07 +
303.54 +
330.54 +
1,143. +
25.41 +
6,433.16 *

6,433.16G*

6,433.16 ÷
13,367.6=
0.48125018702*

Auditor's Tabular Assessment Statement *(1) For the Creation of a Fund to be used for the Repair of *(2) For the Repair of County Ditch No. 43 in the County of Le Sueur Minnesota

***If the lien is for the Creation of a fund to be used for repairs in the future strike out (2). If the lien is for repairs already made strike out (1).**

| Names of the Owners of all Lands and the Names of all Public Roads, Corporate Roads and Railroads that are Assessed for the Repair of said Ditch. | Description of each Parcel of Land to be Assessed for the Repair of said Ditch as it Appears from Original Lien Statement for Construction of said Ditch. | Section | Township | Range | Number of acres in each tract according to assessment rolls and tax list. | Estimated number of acres benefited. | Amount that | Amount that each | Board Meeting -April 10, 2018/ 4% Interest/8 years/690% Lien/Filed - December 14, 2018 |
|---|---|---------|----------|-------|---|--------------------------------------|---|--|--|
| | | | | | | | each tract of land and each public road, corp-orate road and rail-road was benefitted by the construction of said ditch | tract of land and each public road, corp-orate road and rail-road is liable for and must pay for the repair of such ditch. | |
| | | | | | | Acres | Dollars | Dollars | |
| Terance J & Rose A.M. Krenik | Lot 3 | 10 | 111 | 24 | 40.00 | 7.00 | 140.00 | 966.00 | 08.010.5200 |
| Kenneth & Kara Schroeder | That part of G.L. #4 beg at S 1/4 cor of Sec 10, th E 302 ft, NE 627.17 ft, NW 238.00 ft, NE 87.00 ft, NW 287ft, NW to pt due N of beg, th S 839.88 ft to beg | 10 | 111 | 24 | 7.06 | 2.00 | 40.00 | 276.00 | 08.010.5400 |
| Richard Holicky Trust & Joyce Holicky Trust | 19.70 ac of G.L. #4 | 10 | 111 | 24 | 19.70 | 7.00 | 140.00 | 966.00 | 08.010.5000 |
| Glenn M Holicky Trust & Ann M Holicky Trust | W 1/2 of NW 1/4 less 5.70 ac | 15 | 111 | 24 | 74.30 | 34.40 | 860.00 | 5934.00 | 08.015.0100 |
| Glenn M Holicky Trust & Ann M Holicky Trust | NE 1/4 of NW 1/4 | 15 | 111 | 24 | 40.00 | 12.00 | 300.00 | 2070.00 | 08.015.2700 |
| Glenn M Holicky Trust & Ann M Holicky Trust | NW 1/4 of NE 1/4 less 6.03ac | 15 | 111 | 24 | 33.97 | 13.38 | 401.40 | 2769.66 | 08.015.2700 |
| Daniel J & Jerre A Holicky | That part of NW 1/4 of NE 1/4 beg at NE cor, th S 750 ft, W 250 ft, N 750 ft, E 250 ft to beg | 15 | 111 | 24 | 4.31 | 1.62 | 48.60 | 335.34 | 08.015.3000 |
| ✓ Kevin Gruetzmacher | S 1/2 of NE 1/4 less S 1 rod of E 81 rods & less 7.70 ac | 15 | 111 | 24 | 71.80 | 11.25 | 337.50 | 2328.75 | 08.015.2500 |
| ✓ Jean Swanson | SE 1/4 of NW 1/4 | 15 | 111 | 24 | 40.00 | 19.50 | 487.50 | 3363.75 | 08.015.7500 |
| ✓ Jean Swanson | E 1/2 of SW 1/4 | 15 | 111 | 24 | 80.00 | 10.30 | 206.00 | 1421.40 | 08.015.7500 |
| Glenn M Holicky Trust & Ann M Holicky Trust | W 1/2 of SW 1/4 less S 1/2 ac | 15 | 111 | 24 | 79.50 | 6.00 | 60.00 | 414.00 | 08.015.7600 |
| ✓ H & M Properties c/o Mark Menke ETAL | NW 1/4 of SE 1/4 | 15 | 111 | 24 | 40.00 | 4.40 | 176.00 | 1214.40 | 08.015.5200 |
| ✓ H & M Properties c/o Mark Menke ETAL | NE 1/4 of SE 1/4 | 15 | 111 | 24 | 40.00 | 5.30 | 212.00 | 1462.80 | 08.015.5100 |
| ✓ H & M Properties c/o Mark Menke ETAL | S 1/2 of SE 1/4 less 10.00 ac | 15 | 111 | 24 | 70.00 | 24.50 | 857.50 | 5916.75 | 08.015.5200 |
| ✓ Holicky Family LP c/o Leo J & Deloris J Holicky | SE 1/4 of SE 1/4 | 16 | 111 | 24 | 40.00 | 8.14 | 428.40 | 2955.96 | 08.016.5100 |
| ✓ Holicky Family LP c/o Leo J & Deloris J Holicky | SW 1/4 of SE 1/4 | 16 | 111 | 24 | 40.00 | 3.70 | 190.50 | 1314.45 | 08.016.5000 |
| ✓ Holicky Family LP c/o Leo J & Deloris J Holicky | S 1/2 of SW 1/4 less .51 ac to CR #11 R/W | 16 | 111 | 24 | 79.49 | 8.00 | 160.00 | 1104.00 | 08.016.7800 |
| ✓ Larry M & Solveig Theis c/o L&B Theis farms | E 1/2 of NE 1/4 less N 602.5 ft & less 5.40 ac | 20 | 111 | 24 | 55.92 | 10.40 | 300.00 | 2070.00 | 08.020.2600 |
| Allan G Holicky etal | That part of E 1/2 of NE 1/4 lying S of C.D. | 21 | 111 | 24 | 65.00 | 15.66 | 849.60 | 5862.24 | 08.021.2700 |

| | | | | | | | | | | |
|---|---|----|-----|----|-------|-------|---------|----------|-------------|--|
| ✓ Holicky Family LP c/o Leo J & Deloris J Holicky | That part of E 1/2 of NE 1/4 lying N of CD | 21 | 111 | 24 | 15.00 | 13.11 | 745.20 | 5141.88 | 08.021.2600 | |
| Jacquelyn M Moravec | W 1/2 of NE 1/4 | 21 | 111 | 24 | 80.00 | 27.60 | 1388.00 | 9577.20 | 08.021.2500 | |
| ✓ Holicky Family LP c/o Leo J & Deloris J Holicky | That part of NW 1/4 lying N of CD less 41.45 ac | 21 | 111 | 24 | 36.05 | 17.11 | 528.07 | 3643.68 | 08.021.0200 | |
| ✓ Charles W & Mary Prosocki | That part of NW 1/4 of NW 1/4 beg 791.42 ft S of NW cor of Sec, th SE 610.85 ft, SE 239.89 ft, E 291.02 ft, SE 139.26 ft, SE 264.91 ft to C.L. of CD # 43, th SW 588.32 ft, SW 193.63 ft, NW 153.16 ft, NW 239.16 ft, W 483.03 ft, N 800 ft to beg & less .34 ac to CR # 11 R/W | 21 | 111 | 24 | 20.51 | 9.90 | 305.54 | 2108.23 | 08.021.0230 | |
| ✓ Leslie R Eager | That part of NW 1/4 of NW 1/4 beg at NW cor of Sec, th S 791.42 ft, SE 610.85 ft, SE 239.89 ft, E 275.02 ft, NW 281.45, N 763.51 ft, W 1002.01 ft to beg, less .31 ac to CR 11 R/W | 21 | 111 | 24 | 22.27 | 10.71 | 330.54 | 2280.73 | 08.021.0260 | |
| ✓ Lloyd G & Diane Tiede | That part of NW 1/4 lying S of CD # 43, less .37 ac to CR #11 R/W | 21 | 111 | 24 | 80.15 | 33.12 | 1143.00 | 7886.70 | 08.021.0100 | |
| Richard Holicky Trust & Joyce Holicky Trust | N 1/2 of NE 1/4 | 22 | 111 | 24 | 80.00 | 2.60 | 52.00 | 358.80 | 08.022.2700 | |
| Mitch P Holicky | SW 1/4 of NE 1/4 less 3.46 ac | 22 | 111 | 24 | 36.54 | 6.00 | 210.00 | 1449.00 | 08.022.2800 | |
| Donald A & Kathryn Holicky | N 1/2 of NW 1/4 less 5 ac | 22 | 111 | 24 | 75.00 | 11.20 | 284.59 | 1963.67 | 08.022.0110 | |
| ✓ Lisa Holicky | That part of NW 1/4 comm at NW cor of sec 22, th S on W Line of said NW cor 317.38ft to Beg th cont S on W Line 400 ft, E 544.20 ft, N 400 ft, W 544.20 ft to beg | 22 | 111 | 24 | 5.00 | 1.00 | 25.41 | 175.33 | 08.022.0100 | |
| Lyle P Holicky | SW 1/4 of NW 1/4 | 22 | 111 | 24 | 40.00 | 5.00 | 175.00 | 1207.50 | 08.022.0500 | |
| Lyle P. & Allan Holicky | SE 1/4 of NW 1/4 less 5.25 ac | 22 | 111 | 24 | 34.75 | 27.00 | 945.00 | 6520.50 | 08.022.0600 | |
| Lyle P Holicky | N 20 ac of W1/2 of SW 1/4 less 1.45 ac | 22 | 111 | 24 | 18.55 | 5.40 | 27.00 | 186.30 | 08.022.0500 | |
| Joann Cemensky | E 1/2 of SW 1/4 | 22 | 111 | 24 | 80.00 | 1.50 | 7.50 | 51.75 | 08.022.7600 | |
| Dale & Joyce Traxler Trust | S 1/2 of NW 1/4 of SW 1/4 | 22 | 111 | 24 | 20.00 | 1.15 | 5.75 | 39.68 | 08.022.7500 | |
| County of Le Sueur- HWY | Benefits to CSAH #11 along W line of NW 1/4, the center line of which crosses the main ditch at STA 4 plus 40 | 21 | 111 | 24 | | | 700.00 | 4830.00 | 08.999.3223 | |
| Town of Lexington c/o George Whipps | Benefits to road along the W side of NW 1/4 of NW 1/4, the center line of which crosses the ditch at STA 64 plus 80 | 22 | 111 | 24 | | | 200.00 | 1380.00 | 08.999.0822 | |
| Town of Lexington c/o George Whipps | Benefits to road along the N line of N 1/2 of NW 1/4, the CL of which crosses the ditch at STA 189 plus 95 | 15 | 111 | 24 | | | 100.00 | 690.00 | 08.999.0822 | |
| Grand Total: | | | | | | | | 13367.60 | 92236.45 | |



Le Sueur County, MN

Tuesday, June 19, 2018

Board Meeting

Item 9

Commissioner Committee Reports

Staff Contact:



Le Sueur County, MN

Tuesday, June 19, 2018

Board Meeting

Item 10

Future Meetings

Staff Contact:

Future Meetings June - August 2018

June 2018

| | |
|-------------------------|--|
| Tuesday, June 19 | Board Meeting, 9:00 a.m. |
| Thursday, June 21 | Board of Adjustment Meeting, 3:00 p.m. at Environmental Services |
| Tuesday, June 26 | Board Meeting, 9:00 a.m. |

July 2018

| | |
|-------------------------|--|
| Tuesday, July 3 | Board Meeting, 9:00 a.m. and CHB Meeting, 1 p.m. in Waterville |
| Wednesday, July 4 | Offices Closed for Independence Day |
| Tuesday, July 10 | West Jefferson Assessment Hearing, 9:00 a.m. at the Courthouse in the Commissioners Room |
| Thursday, July 12 | P&Z Meeting, 7:00 p.m. at Environmental Services |
| Tuesday, July 17 | Board Meeting, 9:00 a.m. |
| Thursday, July 19 | Board of Adjustment Meeting, 3:00 p.m. at Environmental Services |
| Tuesday, July 24 | Board Meeting, 9:00 a.m. |

August 2018

| | |
|---------------------------|--|
| Tuesday, August 7 | Board Meeting, 9:00 a.m. |
| Thursday, August 9 | P&Z Meeting, 7:00 p.m. at Environmental Services |
| Thursday, August 16 | Board of Adjustment Meeting, 3:00 p.m. at Environmental Services |
| Tuesday, August 21 | Board Meeting, 9:00 a.m. |
| Tuesday, August 28 | Board Meeting, 9:00 a.m. |