



Le Sueur County, MN

Tuesday, January 17, 2017

Board Meeting

Item 8

10:00 a.m. West Jefferson Public Hearing

RE: Establish Sanitary Sewer Subordinate Service District

Staff Contact:

LE SUEUR COUNTY RESOLUTION NO. ___

**ACCEPTING SUBORDINATE SERVICE DISTRICT PETITION AND ORDERING
THE ESTABLISHMENT OF THE WEST JEFFERSON SANITARY SEWER
SUBORDINATE SERVICE DISTRICT**

WHEREAS, Le Sueur County established the German-Jefferson Lakes Area Sanitary District (the “Existing District”), a subordinate service district pursuant to Minnesota Statutes § 375B, on November 16, 2004; and

WHEREAS, the original purpose of the Existing District was to establish a system for the “collection, conveyance and treatment of wastewater”; and

WHEREAS, ultimately, a wastewater system was not created and the Existing District instead implemented a mandatory septic inspection and continuous compliance program; and

WHEREAS, the residents around West Jefferson Lake commissioned a Wastewater Facility Plan dated May 25, 2016 (the “Facility Plan”), prepared by Bolton & Menk, Inc. to explore the potential for the provision of sanitary sewer service around West Jefferson Lake; and

WHEREAS, the Facility Plan calls for the construction of a pressurized sanitary sewer around West Jefferson Lake, serving up to 140 connections (the “Sanitary Sewer System”) to convey wastewater to the City of Cleveland’s wastewater treatment facility; and

WHEREAS, the City of Cleveland, in a draft joint powers agreement, has indicated a willingness to accept the additional wastewater and administer the Sanitary Sewer System if a new subordinate service district (“West Jefferson Sewer Service District”) is created pursuant to Minnesota Statutes § 375B in order to construct and own the Sanitary Sewer System around West Jefferson Lake; and

WHEREAS, the creation of the West Jefferson Sewer Service District will require that properties served by the Sanitary Sewer System be removed from the Existing District; and

WHEREAS, a significant portion of the cost of the Sanitary Sewer System may be financed through outside funding; and

WHEREAS, Le Sueur County supports voluntary efforts to improve wastewater management within the County, including the formation of subordinate service districts when requested by property owners; and

WHEREAS, Le Sueur County supports the voluntary construction of necessary wastewater improvements when those costs are covered by outside sources, the property owners benefitting from such improvements, or any combination of the two; and

[15741-0031/2545858/1]

WHEREAS, Le Sueur County desires to facilitate the voluntary formation of the West Jefferson Sewer Service District around West Jefferson Lake and the construction of the Sanitary Sewer System, if requested through the petition process provided in Minnesota Statutes § 375B.05; and

WHEREAS, in order to facilitate an efficient and expedited petition process for the voluntary formation of the West Jefferson Sewer Service District, the County prepared an example petition form and expressed certain policy positions for the establishment of the West Jefferson Sewer Service District; and

WHEREAS, the County has received a petition and set a public hearing as required by Minnesota Statutes § 375B.

NOW THEREFORE, the Le Sueur County Board of Commissioners hereby adopts the following findings of fact:

FINDINGS OF FACT

- A. The County received a petition from owners of 110 properties. Copies of the petitions are shown in **Exhibit A** (the “Petition”).
- B. County staff have reviewed and verified the Petition.
- C. The County conducted a public hearing on January 17, 2017, at 10:00 a.m., at the Le Sueur County Courthouse at 88 S. Park Avenue, Le Center, as required by Minnesota Statutes § 375B.05, Subd. 2. A copy of the hearing notice is shown in **Exhibit B**.
- D. The County solicited comments from the public regarding the Facility Plan, the Sanitary Sewer System, withdrawal of properties from the Existing District, and establishment and financing of the West Jefferson Sewer Service District.
- E. The consensus of those present at the public hearing was that the County should (1) pass a resolution establishing the subordinate service district; (2) execute an interconnection agreement with the City of Cleveland for wastewater treatment; and (3) continue to pursue additional outside funding for the project. Sufficient public support and utility exists within the geographic boundaries of the proposed West Jefferson Sewer Service District.

FURTHER, the Le Sueur County Board of Commissioners acknowledges and accepts the Petition requesting the creation of a new subordinate service district.

FURTHER, the Le Sueur County Board of Commissioners hereby resolves as follows:

- 1. The West Jefferson Sewer Service District is hereby established.

[15741-0031/2545858/1]

2. The West Jefferson Sewer Service District shall be 100% voluntary.
3. The West Jefferson Sewer Service District shall include the properties listed in **Exhibit C** and as depicted in the map in **Exhibit D**.
4. The service provided by the West Jefferson Sewer Service District shall consist of the construction and administration of a residential wastewater system of sewers, force mains, lift stations, grinder pumps, and meters.
5. The service provided by the West Jefferson Sewer Service District will be financed by taxes, uniform assessment of all construction costs of the Sanitary Sewer System against benefitted properties, and service charges originating within the subordinate service district, as well as federal, state, and local grants or loans.
6. County staff is directed to negotiate an interconnection agreement with the City of Cleveland for wastewater treatment and present a final draft to the Le Sueur County Board of Commissioners at a future date for approval.
7. County staff is directed to prepare an ordinance for the West Jefferson Sewer Service District that:
 - a. Establish methods for setting fees;
 - b. Determines levels, methods and costs of operational oversight;
 - c. Sets performance standards in accordance with an interconnection agreement with the City of Cleveland; and
 - d. Determines responsibilities and obligations of the citizen participants, and the West Jefferson Subordinate Service District.

A final draft of the ordinance shall be presented to the Le Sueur County Board of Commissioners at a public hearing for approval.

8. The West Jefferson Sewer Service District shall be supervised by the County Administrator in conjunction with the County Department of Environmental Services, but administration of the Sanitary Sewer System shall be conducted pursuant to an interconnection agreement with the City of Cleveland.
9. County staff is directed to immediately publish a copy of this resolution, without copies of the exhibits, once in the official newspaper; the public may contact the County Department of Environmental Services for copies of the exhibits.

[15741-0031/2545858/1]

Dated this ____ day of _____, 2017.

Chairperson, Le Sueur County
Board of Commissioners

ATTEST:

Le Sueur County Administrator

[15741-0031/2545858/1]

Exhibit A

(Copies of Signed Petition Forms)

[15741-0031/2545858/1]

Exhibit B

(Copy of hearing notice for January 17, 2017 public hearing)

[15741-0031/2545858/1]

Exhibit C

(Legal Description of Properties in West Jefferson Sewer Service District)

[15741-0031/2545858/1]

Exhibit D

(Map of Properties in West Jefferson Sewer Service District)

[15741-0031/2545858/1]

EXHIBIT A

PARCEL	NAME	PROPERTY_ADDRESS	PROPERTY_CITY	STATE	ZIP
13.430.0070	ANNEXSTAD,LAWRENCE O	28676 WEST LAKE DR	MADISON LAKE	MN	56063
13.651.0100	BALLMAN,JOSHUA & MARCY	28204 RIDGE RD	CLEVELAND	MN	56017
13.651.0110	BALLMAN,JOSHUA & MARCY	28204 RIDGE RD	CLEVELAND	MN	56017
13.650.0300	BARNLUND,ROGER & PAMELA	28229 CEDAR TRL	CLEVELAND	MN	56017
13.003.7900	BECKER,LEE K	27926 MAPLE LN	MADISON LAKE	MN	56063
01.750.0130	BEILKE,ROBERT J	46427 EVERGREEN LN	CLEVELAND	MN	56017
13.003.7600	BESKE,DWIGHT E	27982 MAPLE LN	MADISON LAKE	MN	56063
13.800.0120	BESKE,DWIGHT E	27982 MAPLE LN	MADISON LAKE	MN	56063
13.650.0390	BLAHA,TIMOTHY & TAMMEJO	46552 CEDAR CIR	CLEVELAND	MN	56017
13.650.0100	BLASCHKO,RANDAL & CHRISTINE	28160 CEDAR TRL	CLEVELAND	MN	56017
01.550.0180	BODE,DAVID & KELLY	46571 EVERGREEN LN	CLEVELAND	MN	56017
13.650.0190	BOHLKE,DARREL W & ELNA I	28226 CEDAR TRL	CLEVELAND	MN	56017
13.800.0200	BUSH,DEREK & KRISTI	46875 MAPLE DR	MADISON LAKE	MN	56063
13.430.0180	BUYSSE,ANDREW J	28852 WEST LAKE DR	MADISON LAKE	MN	56063
13.800.0050	CAIRNEY,KIM M	28010 MAPLE LN	MADISON LAKE	MN	56063
13.415.0110	CHRISTENSEN,DANIEL R & JOLENE	HUB DR	MADISON LAKE	MN	56063
13.420.0030	CHRISTIAN,KEVIN W & ANN	28622 WEST LAKE DR	MADISON LAKE	MN	56063
13.420.0020	CHRISTIAN,KEVIN W & ANN				00000
13.420.0010	CHRISTIAN,KEVIN W & ANN				00000
13.430.0190	CONLON,JAMES A & KATHRYN	WEST LAKE DR	MADISON LAKE	MN	56063
13.650.0270	CONNORS,ROLAND & LINDA	28248 CEDAR TRL	CLEVELAND	MN	56017
01.550.0390	DASCHNER,LYLE & PHYLLIS	46645 EVERGREEN LN	CLEVELAND	MN	56017
13.430.0090	DELLWO,KEITH & ANNETTE	28690 WEST LAKE DR	MADISON LAKE	MN	56063
01.550.0160	ERICKSON,TIMOTHY & CHRISTY A	46563 EVERGREEN LN	CLEVELAND	MN	56017
13.650.0230	FLATEN,MARY	28236 CEDAR TRL	CLEVELAND	MN	56017
13.430.0210	FOEDE,JOHN J & NADA K	28908 WEST LAKE DR	MADISON LAKE	MN	56063
13.640.0010	FOGAL,GLEN F	29029 SUNSET AVE	MADISON LAKE	MN	56063
13.650.0260	GADOLA,ROBERT J		CLEVELAND	MN	56017
13.650.0240	GADOLA,ROBERT J	28240 CEDAR TRL	CLEVELAND	MN	56017
13.415.0080	GIBBS,JAMES W & SANDRA K	28613 HUB DR	MADISON LAKE	MN	56063
13.475.0010	GIBBS,JASON & KIMBERLY	46250 CEDAR TREE LN	CLEVELAND	MN	56017
13.650.0440	GIERSDORF,GREGG & JOLENE	46506 CEDAR CIR	CLEVELAND	MN	56017
13.430.0100	GOETTL,BRIAN & JEAN	28698 WEST LAKE DR	MADISON LAKE	MN	56063
13.651.0020	GORE,JILL K	28252 RIDGE RD	CLEVELAND	MN	56017
13.651.0010	GORE,SAMUEL K	28168 CEDAR TRL	CLEVELAND	MN	56017
01.550.0120	GRISIM,CHAD	46549 EVERGREEN LN	CLEVELAND	MN	56017
13.495.0040	GUENTZEL,MARYLOU B	28635 464TH ST	CLEVELAND	MN	56017
01.550.0050	HALL,CAROL J	46525 EVERGREEN LN	CLEVELAND	MN	56017
13.800.0270	HALVORSON,GREG	27938 MAPLE LN	MADISON LAKE	MN	56063
13.760.0030	JADE & CHANCE HALVORSON	27864 470TH ST	MADISON LAKE	MN	56063
13.415.0070	HAWKINS,THOMAS L	28637 HUB DR	MADISON LAKE	MN	56063
13.430.0170	HENDLEY,JUDY A	28824 WEST LAKE DR	MADISON LAKE	MN	56063
13.760.0130	HEUN,MITCHELL E & VICTORIA E	XXXX MAPLE LN	MADISON LAKE	MN	56063
13.800.0250	HILL,KATHLEEN A	27960 MAPLE LN	MADISON LAKE	MN	56063
13.415.0090	HILL,RONALD R & STEPHANIE	28601 HUB DR	MADISON LAKE	MN	56063

13.800.0080	HILIPRE,SHIRLEY J	27996 MAPLE LN	MADISON LAKE	MN	56063
13.650.0380	HINIKER,ROBBY & MELANIE	46544 CEDAR CIR	CLEVELAND	MN	56017
13.430.0200	HOLM,ALAN & CATHERINE	28874 WEST LAKE DR	MADISON LAKE	MN	56063
13.650.0170	HOVICK,ROBERT C	28212 CEDAR TRL	CLEVELAND	MN	56017
01.550.0220	JACOBSON,DAVID R & CAROL	46583 EVERGREEN LN	CLEVELAND	MN	56017
13.004.3000	JOHNSON,CULLY & BARBARA	28299 464TH ST	CLEVELAND	MN	56017
13.650.0410	JOHNSON,DARRELL A & BARBARA	46526 CEDAR CIR	CLEVELAND	MN	56017
13.800.0070	JOHNSON,PELL E & THERESA	28002 MAPLE LN	MADISON LAKE	MN	56063
13.650.0160	KINNE,MATHEW C	28204 CEDAR TRL	CLEVELAND	MN	56017
01.103.8600	KRANZ,TERRANCE G & SANDRA	46566 EVERGREEN LN	CLEVELAND	MN	56017
13.650.0180	KREUTER,DAVID K	28220 CEDAR TRL	CLEVELAND	MN	56017
01.550.0150	KROYER,JEROME R	46557 EVERGREEN LN	CLEVELAND	MN	56017
13.650.0220	LANCE,BRADLEY D & JEAN F	28234 CEDAR TRL	CLEVELAND	MN	56017
13.800.0020	LANGE,BRIAN A & JODY SHELTON	28024 MAPLE LN	MADISON LAKE	MN	56063
13.010.0600	LANGE,BRIAN A & JODY SHELTON				
01.550.0250	LARSON,PAULA K	46589 EVERGREEN LN	CLEVELAND	MN	56017
01.550.0130	MACK III,JOHN A	46553 EVERGREEN LN	CLEVELAND	MN	56017
01.550.0170	MANN,GARRY & NANCY	46567 EVERGREEN LN	CLEVELAND	MN	56017
13.650.0320	MAULAND,ARLEN H & JUDY E	46584 CEDAR CIR	CLEVELAND	MN	56017
13.415.0010	MCCABE,RONALD A	28528 WEST LAKE DR	MADISON LAKE	MN	56063
13.640.0030	MENKE,MARK A	29035 SUNSET AVE	MADISON LAKE	MN	56063
01.750.0110	MENSING,BRIAN & SANDRA	46445 EVERGREEN LN	CLEVELAND	MN	56017
13.650.0210	MENSING,DONALD W & EILEEN A	28232 CEDAR TRL	CLEVELAND	MN	56017
13.652.0040	MILLER,RICHARD E & JERI ANN				
13.652.0030	MILLER,RICHARD E & JERI ANN	28135 CEDAR TRL	CLEVELAND	MN	56017
13.430.0120	MOELLER,GARTH	28700 WEST LAKE RD	MADISON LAKE	MN	56063
13.800.0140	MOHR,MARTIN F & SANDRA L	46886 MAPLE DR	MADISON LAKE	MN	56063
01.550.0110	MORELL,GREGORY & NANCY	46545 EVERGREEN LN	CLEVELAND	MN	56017
13.800.0210	MURILLA,JOSEPH R	46881 MAPLE DR	MADISON LAKE	MN	56063
13.650.0080	OLSON,STEVEN	28153 CEDAR TRL	CLEVELAND	MN	56017
13.495.0070	PHILLIPS,BRIAN J & CONNIE	46256 ARTHUR DR	CLEVELAND	MN	56017
13.651.0030	POWELL,MARSHALL L	28253 RIDGE RD	CLEVELAND	MN	56017
13.800.0090	PURRINGTON,BRIAN & ANN	27988 MAPLE LN	MADISON LAKE	MN	56063
13.800.0060	PURVIS,GARRY L & PHYLLIS A	28006 MAPLE LN	MADISON LAKE	MN	56063
13.800.0190	RANVEK,LUKE D & KATIE E	46858 MAPLE DR	MADISON LAKE	MN	56063
13.430.0010	REICKS,DARWIN L & SHELLEY A	28626 WEST LAKE DR	MADISON LAKE	MN	56063
13.415.0100	ROGERS,AARON E & JULIE D	28605 HUB DR	MADISON LAKE	MN	56063
01.751.0050	ROHLFING,CORY J	46497 EVERGREEN LN	CLEVELAND	MN	56017
13.415.0060	ROHLFING,RICHARD A	28661 HUB DR	MADISON LAKE	MN	56063
13.003.7700	ROHLFING,STEVEN J & LYNELL	28003 MAPLE LN	MADISON LAKE	MN	56063
13.800.0030	ROHLFING,STEVEN J & LYNELL	28020 MAPLE LN	MADISON LAKE	MN	56063
13.650.0420	ROSENBERGER,RITA	46520 CEDAR CIR	CLEVELAND	MN	56017
01.550.0310	SATROM,LAUREN & KELLIE	46613 EVERGREEN LN	CLEVELAND	MN	56017
01.751.0020	SCHAEFER,JOEL & MELISSA	46467 EVERGREEN LN	CLEVELAND	MN	56017
13.650.0400	SCHAFFER,TIMOTHY & SHEILA RAE	46538 CEDAR CIR	CLEVELAND	MN	56017
13.651.0040	SCHAUER,JILL M	28226 RIDGE RD	CLEVELAND	MN	56017
01.550.0260	SCHMIDT,GARY D & GERALDINE L	46599 EVERGREEN LN	CLEVELAND	MN	56017

13.760.0140	SCHMITZ, AARON & HEIDI	27800 MAPLE LANE	MADISON LAKE	MN	56063
13.495.0080	SIMONSON,DALE E & DIANA	46290 ARTHUR DR	CLEVELAND	MN	56017
13.430.0230	MEIER, DAVID & WILSON, JOY	28926 WEST LAKE DR	MADISON LAKE	MN	56063
01.550.0240	STRAND,DONNA RAE	46595 EVERGREEN LN	CLEVELAND	MN	56017
01.103.8200	STRAND,DONNA RAE				00000
13.800.0260	STRASSBURG,SHAWN M	27948 MAPLE LN	MADISON LAKE	MN	56063
13.430.0050	SWENSON,R VICTOR & SHARON	28672 WEST LAKE DR	MADISON LAKE	MN	56063
13.650.0150	THOMPSON,LARRY W & JODY R	28196 CEDAR TRL	CLEVELAND	MN	56017
01.550.0380	THOMPSON,LEIF C & COLEEN A	46635 EVERGREEN LN	CLEVELAND	MN	56017
01.103.8300	TOLZMANN,CURTIS & RALEEN	46590 EVERGREEN LN	CLEVELAND	MN	56017
13.800.0170	TRUST,DALE F & JOANNE V WILLS	46850 MAPLE DR	MADISON LAKE	MN	56063
01.751.0010	TRUST,NINA L WEST	46451 EVERGREEN LN	CLEVELAND	MN	56017
13.430.0020	TRUST,STEVEN & SALLY M BLAIS	28636 WEST LAKE DR	MADISON LAKE	MN	56063
13.800.0130	ULRICH,JOHN R	46896 MAPLE DR	MADISON LAKE	MN	56063
13.800.0040	VOGEL,NANCY A	28016 MAPLE LN	MADISON LAKE	MN	56063
01.751.0040	VOLKENANT,MARK A	46487 EVERGREEN LN	CLEVELAND	MN	56017
13.650.0250	WARMKA,BRYAN & MARY L	28246 CEDAR TRL	CLEVELAND	MN	56017
13.004.3100	WASMUND,LARRY & PAULA	28275 464TH ST	CLEVELAND	MN	56017
01.550.0340	WENDELSCHAFER,DAVID C & KAY	46623 EVERGREEN LN	CLEVELAND	MN	56017
01.550.0200	WETZELL JR,THOMAS L	46577 EVERGREEN LN	CLEVELAND	MN	56017
13.800.0010	WIEBOLD,KEVIN S	28060 470TH ST	MADISON LAKE	MN	56063
13.650.0200	WILLS,STANLEY N & DEBORAH	28228 CEDAR TRL	CLEVELAND	MN	56017
13.430.0030	WINKLER,ROBERT J & AUDREY J	28648 WEST LAKE DR	MADISON LAKE	MN	56063
01.550.0040	WOLF,STEVEN C	46519 EVERGREEN LN	CLEVELAND	MN	56017

NOTICE OF PUBLIC HEARING ON POTENTIAL WEST JEFFERSON SUBORDINATE SERVICE DISTRICT

Notice is hereby given that the Le Sueur County Board of Commissioners, pursuant to Minnesota Statute Chapter 375B will hold a public hearing on January 17, 2017 at 10:00 a.m. at the Le Sueur County Courthouse at 88 S. Park Avenue, Le Center, MN for the purpose of receiving public comment, either oral or written, prior to the Board acting on the petition for the establishment of a voluntary subordinate service district on West Jefferson Lake in order to facilitate the construction and administration of a wastewater system connected to the City of Cleveland's existing wastewater treatment system. The area served by the proposed district will be withdrawn from the existing German-Jefferson Lakes Area Sanitary Sewer District. The subordinate service district is expected to accommodate up to 140 sewer connections within a defined area on a petition basis. Grants and financial assistance may be available to property owners within the proposed district.

Darrell Pettis
County Administrator

[15741-0031/2534984/1]

PARCEL_NUM	SORT_NAME
13.650.0160	KINNE,MATHEW C
01.550.0220	JACOBSON,DAVID R & CAROL
13.415.0110	CHRISTENSEN,DANIEL R & JOLENE
13.650.0400	SCHAFFER,TIMOTHY & SHEILA RAE
13.415.0100	ROGERS,AARON E & JULIE D
13.650.0150	THOMPSON,LARRY W & JODY R
01.751.0050	ROHLFING,CORY J
01.550.0250	LARSON,PAULA K
13.650.0410	JOHNSON,DARRELL A & BARBARA J
13.430.0180	BUYSSE,ANDREW J
13.430.0170	HENDLEY,JUDY A
13.430.0190	CONLON,JAMES A & KATHRYN
13.415.0060	ROHLFING,RICHARD A
13.650.0270	CONNORS,ROLAND & LINDA
13.415.0070	HAWKINS,THOMAS L
13.650.0250	WARMKA,BRYAN & MARY L
13.650.0260	GADOLA,ROBERT J
01.550.0110	MORELL,GREGORY & NANCY
13.650.0240	GADOLA,ROBERT J
01.550.0120	GRISIM,CHAD
13.650.0230	FLATEN,MARY
13.415.0080	GIBBS,JAMES W & SANDRA K
01.550.0130	MACK III,JOHN A
13.650.0220	LANCE,BRADLEY D & JEAN F
01.550.0150	KROYER,JEROME R
13.650.0300	BARNLUND,ROGER & PAMELA
13.650.0320	MAULAND,ARLEN H & JUDY E
01.550.0160	ERICKSON,TIMOTHY & CHRISTY A
13.415.0090	HILL,RONALD R & STEPHANIE
13.650.0210	MENSING,DONALD W & EILEEN A
13.800.0010	WIEBOLD,KEVIN S
13.003.7700	ROHLFING,STEVEN J & LYNELL
13.800.0020	LANGE,BRIAN A & JODY SHELTON
13.800.0030	ROHLFING,STEVEN J & LYNELL
13.800.0040	VOGEL,NANCY A
13.800.0050	CAIRNEY,KIM M
13.800.0090	PURRINGTON FAMILY R L TRUST
13.800.0060	PURVIS,GARRY L & PHYLLIS A
13.760.0030	HALVORSON,JADE & CHANCE
13.800.0070	JOHNSON,PELL E & THERESA
13.415.0010	MCCABE,RONALD A
13.800.0080	HILPIPPE,SHIRLEY J
13.003.7600	BESKE,DWIGHT E
13.010.0600	LANGE,BRIAN A & JODY SHELTON
13.800.0090	PURRINGTON FAMILY R L TRUST
13.800.0120	BESKE,DWIGHT E

13.800.0270	HALVORSON,GREG
13.003.7900	BECKER,LEE K
13.800.0260	STRASSBURG,SHAWN M
13.800.0130	ULRICH,JOHN R
13.800.0250	HILL,KATHLEEN A
13.800.0140	MOHR,MARTIN F & SANDRA L
13.760.0130	HEUN,MITCHELL E & VICTORIA E
13.800.0210	MURILLA,JOSEPH R
13.760.0140	SCHMITZ,AARON & HEIDI
13.800.0200	BUSH,DEREK & KRISTI
13.800.0190	RANVEK,LUKE D & KATIE E
13.800.0170	TRUST,DALE F & JOANNE V WILLS
01.550.0170	MANN,GARRY & NANCY
13.650.0200	WILLS,STANLEY N & DEBORAH
01.550.0050	HALL,CAROL J
13.650.0190	BOHLKE,DARREL W & ELNA I
01.550.0180	BODE,DAVID & KELLY
01.550.0040	WOLF,STEVEN C
13.650.0180	KREUTER,DAVID K
13.650.0380	HINIKER,ROBBY & MELANIE
01.550.0200	WETZELL JR,THOMAS L
13.650.0170	HOVICK,ROBERT C
13.650.0390	BLAHA,TIMOTHY G & TAMMEJO A
01.103.8600	KRANZ,TERRANCE G & SANDRA
13.650.0420	ROSENBERGER,RITA
13.650.0430	SCHUMACHER,RUDOLF & SANDRA
13.430.0200	HOLM,ALAN & CATHERINE
01.103.8300	TOLZMANN,CURTIS & RALEEN
13.420.0030	CHRISTIAN,KEVIN W & ANN
13.650.0440	GIERSDORF,GREGG & JOLENE
13.430.0210	FOEDE,JOHN J & NADA K
01.751.0040	VOLKENANT,MARK A
13.420.0020	CHRISTIAN,KEVIN W & ANN
01.550.0240	STRAND,DONNA RAE
13.420.0010	CHRISTIAN,KEVIN W & ANN
01.550.0260	SCHMIDT,GARY D & GERALDINE L
13.430.0120	MOELLER,GARTH
01.103.8200	STRAND,DONNA RAE
13.430.0010	REICKS,DARWIN L & SHELLEY A
13.430.0230	MEIER,DAVID
01.550.0260	SCHMIDT,GARY D & GERALDINE L
13.430.0020	TRUST,STEVEN & SALLY M BLAIS
01.751.0020	SCHAEFER,JOEL & MELISSA
13.430.0100	GOETTL,BRIAN & JEAN
13.430.0030	WINKLER,ROBERT J & AUDREY J
13.430.0090	DELLWO,KEITH & ANNETTE
13.430.0050	SWENSON,R VICTOR & SHARON

13.430.0070	ANNEXSTAD,LAWRENCE O
01.751.0010	TRUST,NINA L WEST
01.550.0310	SATROM,LAUREN & KELLIE
01.750.0110	MENSING,BRIAN & SANDRA
01.750.0130	BEILKE,ROBERT J
13.640.0030	MENKE,MARK A
01.550.0340	WENDELSCHAFER,DAVID C & KAY
13.650.0100	BLASCHKO,RANDAL & CHRISTINE A
13.650.0080	OLSON,STEVEN
13.652.0040	MILLER,RICHARD E & JERI ANN
13.652.0030	MILLER,RICHARD E & JERI ANN
01.550.0380	THOMPSON,LEIF C & COLEEN A
13.651.0010	GORE,SAMUEL K
01.550.0390	DASCHNER,LYLE & PHYLLIS
13.651.0020	GORE,JILL K
13.651.0030	POWELL,MARSHALL L
13.651.0100	BALLMAN,JOSHUA & MARCY
13.651.0040	SCHAUER,JILL M
13.651.0110	BALLMAN,JOSHUA & MARCY
13.475.0010	GIBBS,JASON & KIMBERLY
13.495.0070	PHILLIPS,BRIAN J & CONNIE
13.495.0080	SIMONSON,DALE E & DIANA
13.004.3100	WASMUND,LARRY & PAULA
13.004.3000	JOHNSON,CULLY & BARBARA
13.495.0090	SIMONSON,DALE E & DIANA
13.495.0030	GUENTZEL,MARYLOU B

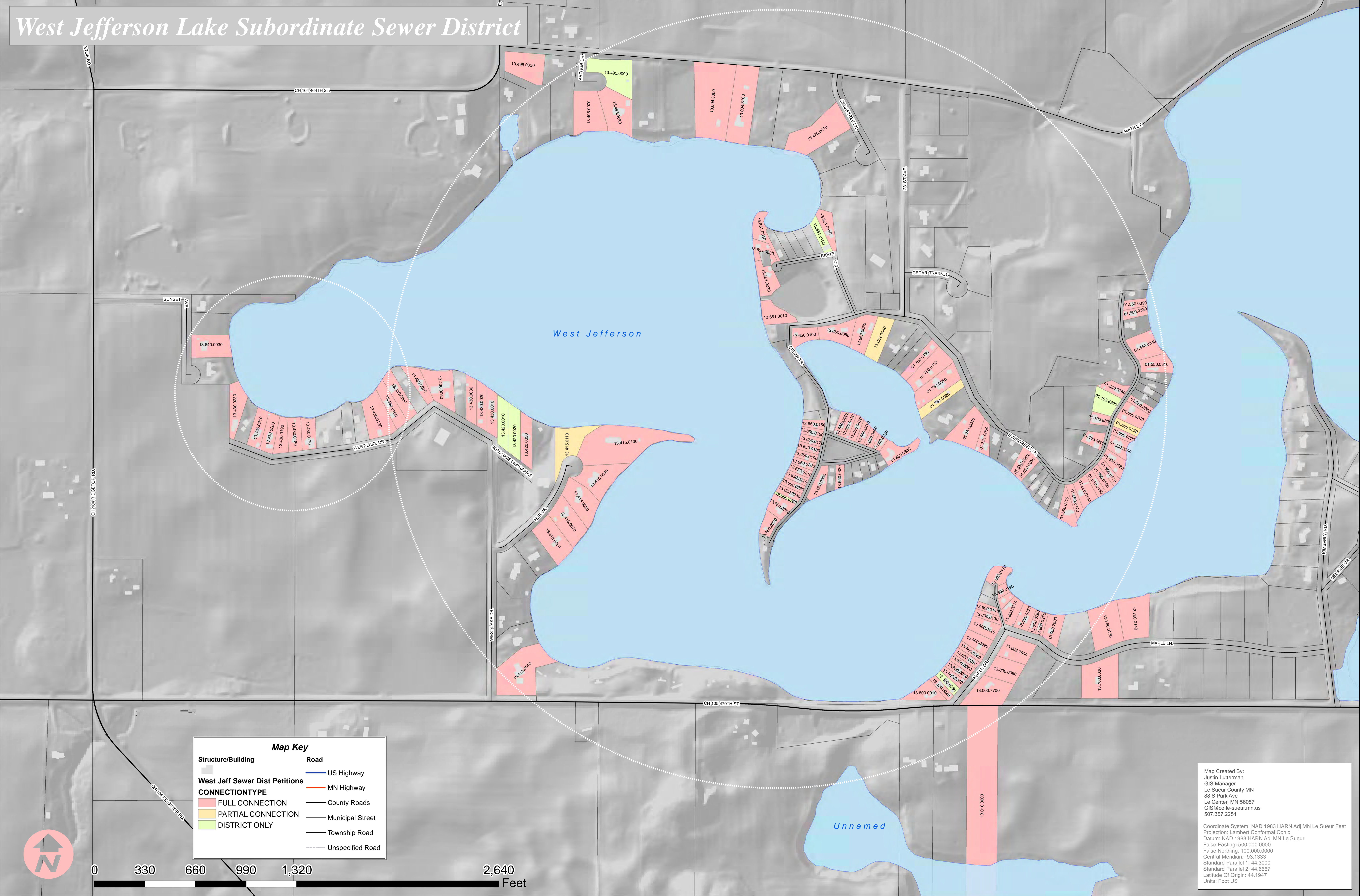
LEGAL_DECR

TOMAHAWK POINT (JEFFERSON) Lot-035
EDGEWATER TERRACE (JEFFERSON) Lot-022
BIEHNS SOUTHVIEW (JEFFERSON) Lot-011 Block-001 1.04 AC
TOMAHAWK POINT (JEFFERSON) Lot-059
BIEHNS SOUTHVIEW (JEFFERSON) Lot-010 Block-001 2.52 AC
TOMAHAWK POINT (JEFFERSON) Lot-034
TOMAHAWK POINT 2ND ADDN Lot-005 Block-003
EDGEWATER TERRACE (JEFFERSON) Lot-023
TOMAHAWK POINT (JEFFERSON) Lot-060
BIEHNS WEST JEFF (JEFFERSON) Lot-018
BIEHNS WEST JEFF (JEFFERSON) Lot-017
BIEHNS WEST JEFF (JEFFERSON) Lot-019
BIEHNS SOUTHVIEW (JEFFERSON) Lot-006 Block-001 .94 AC
TOMAHAWK POINT (JEFFERSON) Lot-046
BIEHNS SOUTHVIEW (JEFFERSON) Lot-007 Block-001 .94 AC
TOMAHAWK POINT (JEFFERSON) LOT 44 LESS N 1/2 OF N 1/2 & LOT 45
TOMAHAWK POINT (JEFFERSON) N 1/2 OF N 1/2 OF LOT 44 & SW PORTION OF LOT 48
EDGEWATER TERRACE (JEFFERSON) Lot-011
TOMAHAWK POINT (JEFFERSON) Lot-043
EDGEWATER TERRACE (JEFFERSON) Lot-012
TOMAHAWK POINT (JEFFERSON) Lot-042
BIEHNS SOUTHVIEW (JEFFERSON) Lot-008 Block-001 .94 AC
EDGEWATER TERRACE (JEFFERSON) .45 AC LOTS 13 & 14
TOMAHAWK POINT (JEFFERSON) Lot-041
EDGEWATER TERRACE (JEFFERSON) Lot-015
TOMAHAWK POINT (JEFFERSON) LOT 48 LESS PORTION IN SW COR & LOT 49
TOMAHAWK POINT (JEFFERSON) Lot-051
EDGEWATER TERRACE (JEFFERSON) Lot-016
BIEHNS SOUTHVIEW (JEFFERSON) Lot-009 Block-001 .99 AC
TOMAHAWK POINT (JEFFERSON) Lot-040
WILDWOOD (LAKE JEFFERSON) Lot-001
Sect-03 Twp-109 Range-025 1.18 AC THAT PART OF LOT 6 BEG 385.20 FT E OF SW COR OF SEC 3, TH NE 255.50 FT, SE 2
WILDWOOD (LAKE JEFFERSON) Lot-002
WILDWOOD (LAKE JEFFERSON) Lot-003
WILDWOOD (LAKE JEFFERSON) Lot-004
WILDWOOD (LAKE JEFFERSON) Lot-005
WILDWOOD (LAKE JEFFERSON) 1.10 AC LOTS 9&10 & 150X200FT OF GL#6 ADJOINING LOTS 9 & 10 ON EAST
WILDWOOD (LAKE JEFFERSON) Lot-006
ROYS LANDING Lot-003 Block-001 1.40 AC
WILDWOOD (LAKE JEFFERSON) Lot-007
BIEHNS SOUTHVIEW (JEFFERSON) Lot-001 Block-001 1.83 AC
WILDWOOD (LAKE JEFFERSON) Lot-008
Sect-03 Twp-109 Range-025 .69 AC THAT PART OF LOT 6 BEG 66 FT SW OF SE COR OF LOT 22, WILDWOOD SUB-DIV, TI
Sect-10 Twp-109 Range-025 6.04 AC E 200 FT OF W 640 FT OF NW 1/4 OF NW 1/4
WILDWOOD (LAKE JEFFERSON) 1.10 AC LOTS 9&10 & 150X200FT OF GL#6 ADJOINING LOTS 9 & 10 ON EAST
WILDWOOD (LAKE JEFFERSON) LOTS 11 & 12

WILDWOOD (LAKE JEFFERSON) Lot-026
Sect-03 Twp-109 Range-025 .53 AC THAT PART OF LOT 6 BEG AT SE COR OF LOT 26 WILDWOOD, TH SE 119.70 FT, NE 2
WILDWOOD (LAKE JEFFERSON) Lot-025
WILDWOOD (LAKE JEFFERSON) Lot-013
WILDWOOD (LAKE JEFFERSON) LOTS 23 & 24
WILDWOOD (LAKE JEFFERSON) Lot-014
ROYS LANDING Lot-002 Block-002 1.20 AC
WILDWOOD (LAKE JEFFERSON) LOT 21 & 22 LESS 10 X 15 FT IN SE COR
ROYS LANDING Lot-003 Block-002 1.10 AC
WILDWOOD (LAKE JEFFERSON) Lot-020
WILDWOOD (LAKE JEFFERSON) Lot-019
WILDWOOD (LAKE JEFFERSON) LOT 17 & 18
EDGEWATER TERRACE (JEFFERSON) Lot-017
TOMAHAWK POINT (JEFFERSON) Lot-039
EDGEWATER TERRACE (JEFFERSON) Lot-005
TOMAHAWK POINT (JEFFERSON) Lot-038
EDGEWATER TERRACE (JEFFERSON) LOTS 18 & 19
EDGEWATER TERRACE (JEFFERSON) Lot-004
TOMAHAWK POINT (JEFFERSON) Lot-037
TOMAHAWK POINT (JEFFERSON) Lot-057
EDGEWATER TERRACE (JEFFERSON) .41 AC LOTS 20 & 21
TOMAHAWK POINT (JEFFERSON) Lot-036
TOMAHAWK POINT (JEFFERSON) Lot-058
Sect-03 Twp-109 Range-025 .29 AC .29 AC OF LOT 5 LYING W OF LOTS 20 & 21 OF EDGEWATER TERRACE
TOMAHAWK POINT (JEFFERSON) Lot-061
TOMAHAWK POINT (JEFFERSON) Lot-062
BIEHNS WEST JEFF (JEFFERSON) Lot-020
Sect-03 Twp-109 Range-025 .21 AC .21 AC OF G.L. #5 LYING W OF LOT 23 EDGEWATER TERRACE
BIEHN SUB-DIV (LAKE JEFFERSON) Lot-003
TOMAHAWK POINT (JEFFERSON) Lot-063
BIEHNS WEST JEFF (JEFFERSON) Lot-021
TOMAHAWK POINT 2ND ADDN Lot-004 Block-003
BIEHN SUB-DIV (LAKE JEFFERSON) Lot-002
EDGEWATER TERRACE (JEFFERSON) LOTS 24-25
BIEHN SUB-DIV (LAKE JEFFERSON) Lot-001
EDGEWATER TERRACE (JEFFERSON) Lot-026 & .30 AC TRIANGLE OF G.L. #5 LYING W OF LOTS 26-27-28 IN SEC 3-109-25
BIEHNS WEST JEFF (JEFFERSON) LOTS 11 & 12
Sect-03 Twp-109 Range-025 .55 AC COMM 26.13 FT W & 20.66 FT N OF SW COR OF LOT 28 OF EDGEWTR TERR, TH W 2
BIEHNS WEST JEFF (JEFFERSON) Lot-001
BIEHNS WEST JEFF (JEFFERSON) Lot-023
EDGEWATER TERRACE (JEFFERSON) Lot-026 & .30 AC TRIANGLE OF G.L. #5 LYING W OF LOTS 26-27-28 IN SEC 3-109-25
BIEHNS WEST JEFF (JEFFERSON) Lot-002
TOMAHAWK POINT 2ND ADDN Lot-002 Block-003
BIEHNS WEST JEFF (JEFFERSON) Lot-010
BIEHNS WEST JEFF (JEFFERSON) Lot-003
BIEHNS WEST JEFF (JEFFERSON) Lot-009
BIEHNS WEST JEFF (JEFFERSON) LOTS 5 & 6

BIEHNS WEST JEFF (JEFFERSON) Lot-007
TOMAHAWK POINT 2ND ADDN Lot-001 Block-003
EDGEWATER TERRACE (JEFFERSON) LOTS 31 & 32
TOMAHAWK POINT (JEFFERSON) Lot-011 .85 AC LOTS 11 & 12 TOMAHAWK PT & OUTLOT B TOMAHAWK PT 2ND ADDN
TOMAHAWK POINT (JEFFERSON) Lot-013
SUNSET RIDGE SUB-DIV (JEFF) Lot-003 Block-001
EDGEWATER TERRACE (JEFFERSON) LOTS 33-34-35
TOMAHAWK POINT (JEFFERSON) LOTS 24 & 25
TOMAHAWK POINT (JEFFERSON) LOTS 22 & 23
TOMAHAWK POINT 2ND ADDN Lot-002 Block-002
TOMAHAWK POINT 2ND ADDN Lot-001 Block-002
EDGEWATER TERRACE (JEFFERSON) Lot-038
TOMAHAWK PT 1ST ADDN (JEFF) Lot-001
EDGEWATER TERRACE (JEFFERSON) Lot-039
TOMAHAWK PT 1ST ADDN (JEFF) LOT 2, & BEG AT NE COR OF LOT 2, TH NW 10 FT, SW 54.82 FT, SE 10 FT, NE 54 FT TO
TOMAHAWK PT 1ST ADDN (JEFF) Lot-003
TOMAHAWK PT 1ST ADDN (JEFF) Lot-010
TOMAHAWK PT 1ST ADDN (JEFF) Lot-004
TOMAHAWK PT 1ST ADDN (JEFF) Lot-011
GARYS CEDARTREE (JEFFERSON) Lot-001 Block-001 1.61 AC
JEFFERSON WEST (JEFFERSON) Lot-005 Block-002 1.24 AC
JEFFERSON WEST (JEFFERSON) Lot-006 Block-002 1.19 AC
Sect-04 Twp-109 Range-025 2.06 AC THAT PART OF G L 2 & OF NE 1/4 OF NE 1/4 COMM AT NE COR OF SEC, TH S 261 F
Sect-04 Twp-109 Range-025 3.07 AC THAT PART OF NE 1/4 COMM 261 FT S OF NE COR OF SEC, TH W 2000 FT, S 876 FT
JEFFERSON WEST (JEFFERSON) Lot-007 Block-002 1.11 AC
JEFFERSON WEST (JEFFERSON) Lot-001 Block-002 1.01 AC

West Jefferson Lake Subordinate Sewer District



Map Key

	Structure/Building		Road
	West Jeff Sewer Dist Petitions		US Highway
	CONNECTIONTYPE		MN Highway
	FULL CONNECTION		County Roads
	PARTIAL CONNECTION		Municipal Street
	DISTRICT ONLY		Township Road
			Unspecified Road

Map Created By:
 Justin Lutterman
 GIS Manager
 Le Sueur County MN
 88 S Park Ave
 Le Center, MN 56057
 GIS@co.le-sueur.mn.us
 507.357.2251

Coordinate System: NAD 1983 HARN Adj MN Le Sueur Feet
 Projection: Lambert Conformal Conic
 Datum: NAD 1983 HARN Adj MN Le Sueur
 False Easting: 500,000.0000
 False Northing: 100,000.0000
 Central Meridian: -93.1333
 Standard Parallel 1: 44.3000
 Standard Parallel 2: 44.6667
 Latitude Of Origin: 44.1947
 Units: Foot US