



Le Sueur County, MN

Tuesday, September 6, 2016

Board Meeting

Item 8

10:50 a.m. Carol Blaschko

RE: CSAH 29 Resolution

RE: AMC Annual Conference Reminder: December 5-6, 2016 at the Hyatt Regency Minneapolis

Staff Contact:

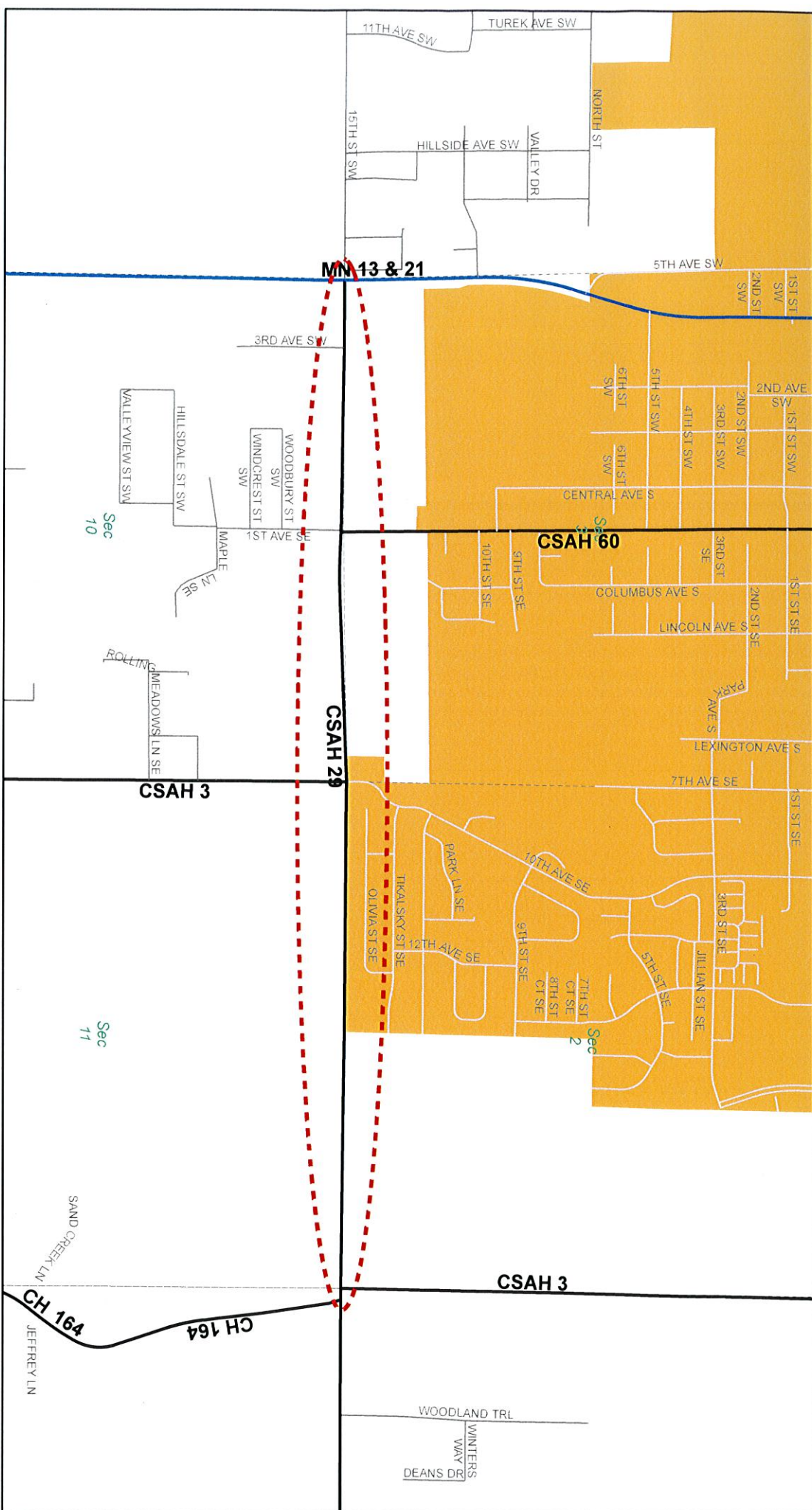
REQUEST MN/DOT TO ESTABLISH SPEED ZONES

| Road Number | From | To | Location |
|-------------|---------------------|---|----------------|
| CSAH 29 | Trunk Highway 13/21 | CSAH 3 / CR 164 (141 st Ave) | Lanesburg Twp. |

88

County Administrator

Speed Zone Establishment



Date: 8/31/2016

Author: Justin Lutterman - GIS Manager

Le Sueur County GIS Department

507.357.8577

jlutterman@co.le-sueur.mn.us

Coordinate System: NAD 1983 HARN Adj MN Le Sueur Feet

Projection: Lambert Conformal Conic

Datum: NAD 1983 HARN Adj MN Le Sueur

False Easting: 500,000.0000

False Northing: 100,000.0000

Central Meridian: -93.1333

Standard Parallel 1: 44.3000

Standard Parallel 2: 44.6667

Latitude Of Origin: 44.1947

Units: Foot US



Map Key

- US Highway
- MN Highway
- CSAH: County Road
- Township Road
- Municipal Street

