



Le Sueur County, MN

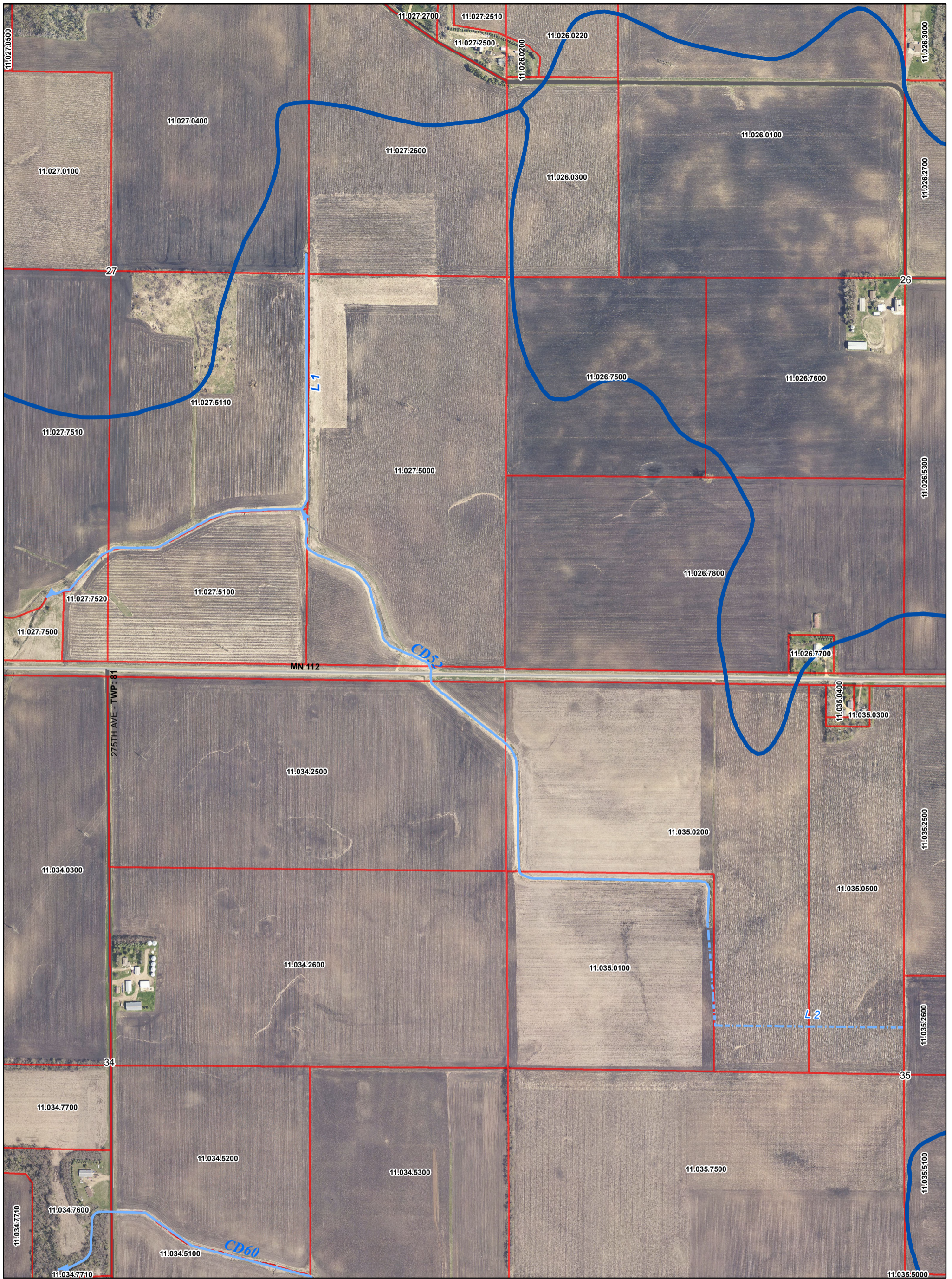
Tuesday, July 26, 2016

Board Meeting

Item 8

11:00 a.m. CD #52 Redetermination Informational Public Hearing (1 hour)

Staff Contact:



MAP KEY

COUNTY DITCH ROADS

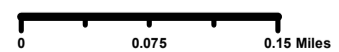
- MAIN
- SPUR
- TILE
- Watershed
- Parcels
- US Highway
- MN Highway
- CSAH
- County Road
- Township Road
- Municipal Street
- State Park Road
- State Game Preserve Road
- Private Road - Open to public
- Unspecified

CITY

- CITY

LAKE

- LAKE



PLEASE REPORT MAP CHANGES TO:
 LE SUEUR COUNTY GIS DEPARTMENT
 GIS@CO.LE-SUEUR.MN.US
 507.357.8577

County Ditch 52



Date: 7/13/2016

Coordinate System: NAD 1983 HARN Adj MN Le Sueur Feet
 Projection: Lambert Conformal Conic
 Datum: NAD 1983 HARN Adj MN Le Sueur
 False Easting: 500,000.0000
 False Northing: 500,000.0000
 Central Meridian: -93.1333
 Standard Parallel 1: 44.3000
 Standard Parallel 2: 44.6667
 Latitude Of Origin: 44.1667
 Units: Foot US

MPP CREATED BY:
 Justin LaBerman
 Le Sueur County GIS Manager
 jlaberman@co.lesueur.mn.us
 507.357.8577

Document Path: G:\Reader\Update\DATA\MXD\CountyDitches\Le_Sueur\CountyDitches.mxd