



**LE SUEUR COUNTY BOARD OF COMMISSIONERS
MEETING AGENDA
July 5, 2016**

1. **9:00 a.m. Agenda and Consent Agenda**
RE: June 28, 2016 Minutes and Summary Minutes
RE: Two CD #23 Repair Requests
RE: JD #5 Repair Request
RE: June 2016 Transfers
RE: Cleveland Fire Relief Association at Beaver Dam Gambling Application

2. **9:05 a.m. Claims (5 min)**

3. **9:10 a.m. Human Resources (10 min.)**

4. **9:20 a.m. Jim McMillen, Maintenance (5 min)**
RE: Retrofit Lighting

5. **9:25 a.m. Joshua Mankowski, Environmental Resources Specialist (10 min)**
RE: Jefferson Shores Pond

6. **9:35 a.m. Jim Connelly (10 min)**
RE: Introduction

7. **9:45 a.m. Darrell Pettis, County Administrator/Engineer**
RE: Space Needs

8. **10:00 a.m. Closed Meeting**
RE: To develop offer to purchase real property, parcels 20.033.0100,
20.575.0570 and 20.575.0580

MN Stat. 13D.05 (3) (c) (3)

9. **10:30 a.m. 4-H Building Work Session**

10. **Future Meetings**



Le Sueur County, MN

Tuesday, July 5, 2016

Board Meeting

Item 1

9:00 a.m. Agenda and Consent Agenda

RE: June 28, 2016 Minutes and Summary Minutes

RE: Two CD #23 Repair Requests

RE: JD #5 Repair Request

RE: June 2016 Transfers

RE: Cleveland Fire Relief Association at Beaver Dam Gambling Application

Staff Contact:

Minutes of Le Sueur County Board of Commissioners Meeting June 28, 2016

The Le Sueur County Board of Commissioners met in regular session on Tuesday, June 28, 2016 at 9:00 a.m. in the Courthouse at Le Center, Minnesota. Those members present were: John King, Dave Gliszinski, Steve Rohlffing, Lance Wetzel, and Joe Connolly. Also present were Darrell Pettis and Brent Christian.

On motion by Connolly, seconded by Wetzel and unanimously approved, the Board approved the agenda for the business of the day.

On motion by Gliszinski, seconded by Rohlffing and unanimously approved, the Board approved the consent agenda:

- Approved the June 21, 2016 County Board Minutes and Summary Minutes.
- Approved the 2016-2017 Tobacco Licenses

David Foley, Extension, introduced Megan Domonoske, the 4H summer intern.

Pat Simonette and Neil Pekrul with Unimin Corporation came before the Board to present the 2015 Kasota and Ottawa Plant Annual Reports.

On motion by Wetzel, seconded by Rohlffing and unanimously approved, the Board accepted the Unimin Annual Reports and set the 2016 Annual Performance Bonds in the amount of \$2,741,941 for the Kasota Plants and \$2,591,839 for the Ottawa Plant. A donation by Unimin to the Historical Society in the amount of \$7,500 was also acknowledged.

Kathy Brockway, Planning & Zoning Administrator appeared before the Board with several items for approval.

On motion by Rohlffing, seconded by Connolly and approved via roll call vote 5-0, the Board granted a Conditional Use Permit to Socore Red Maple LLC, Chicago, IL, (Applicant): Kathleen Regenscheid Revocable Trust, (Owner) to allow the applicant to construct a 3 MW solar garden in the Conservancy "C" and Agriculture "A" Districts and the Special Protection "SP" District, on an unnamed stream. Property is located in the NW 1/4 SE 1/4, Section 24, Kasota Township. The application was approved with the following conditions and findings are on file at the Planning and Zoning Office:

- A 7' fence with 3 strands of barbed wire for a total fence height of 8'.
- Decommissioning Bond as set by the County Commissioners.

On motion by Wetzel, seconded by Gliszinski and approved via roll call vote 5-0, the Board granted a Conditional Use Permit to Lyra Community Solar Garden, Edina, MN, (Applicant): Larry & Solveig Theis, Shakopee, MN, (Owner): Request that the County grant a Conditional Use Permit to allow the applicant to construct a 3 MW solar garden in a Special Protection "SP" District, on a Natural Environment "NE" lake, Querum's Slough. Property is located in the SW 1/4 SW 1/4, Section 10, Waterville Township. The application was approved with the following conditions and findings are on file at the Planning and Zoning Office:

- Decommissioning Bond as set by the County Commissioners.

On motion by Rohlfing, seconded by Wetzel and unanimously approved, the Board approved and authorized the Chair to sign a Resolution opting out of the requirements Minnesota Statutes, Section 394.307 for Temporary Family Health Care Dwellings.

Cindy Westerhouse, Human Resources came before the Board with two items for approval.

On motion by Rohlfing, seconded by Gliszinski and unanimously approved, the Board approved the recommendation to post the reclassification announcement for the full time Assistant Planning and Zoning in Environmental, Planning and Zoning, as a Grade 11, Step 1 at \$23.42 per hour. This position was reclassified through the Springsted SAFE Evaluation Program. The position was a Grade 10. It has been past practice that all positions that have been reclassified are posted internally.

On motion by Connolly, seconded by Rohlfing and approved with Wetzel abstaining, the Board approved the recommendation to place the County Attorney's clerical staff on the Le Sueur County's vacation and sick leave schedule; to accrue vacation and sick leave as outlined in the Personnel Policy Manual; enter the current vacation and sick leave balances, submitted by the County Attorney, into the Le Sueur County's payroll system and require the clerical staff to submit an electronic timecard each pay period.

At 10:00 a.m. the Board recessed its Regular Session to reconvene the Board of Appeal and Equalization.

On motion by Connolly, seconded by Rohlfing and unanimously approved, the Board closed the Board of Appeal and Equalization at 10:05 a.m. and the Chair called the Board back into Regular Session.

The public hearing for County Ditches # 6, 29, 31, 42, 58, 59, and 64 convened at 10:15 a.m.

County Ditch #6

On motion by Rohlfing, seconded by Wetzel and unanimously approved, the Board authorized a 62% lien for Le Sueur County Ditch #6 in the amount of \$27,225.30 to be spread over ten years beginning with taxes payable in 2017. The interest rate is 4% and the lien will be filed July 22, 2016. Minimum per parcel is \$5.00 and any assessment of \$50.00 or under shall be payable in one year. There were 3 public comments.

County Ditch #29

On motion by Connolly, seconded by Gliszinski and unanimously approved, the Board authorized a 93% lien for Le Sueur County Ditch #29 in the amount of \$72,865.45 to be spread over ten years beginning with taxes payable in 2017. The interest rate is 4% and the lien will be filed July 22, 2016. Minimum per parcel is \$5.00 and any assessment of \$50.00 or under shall be payable in one year. There were 0 public comments.

County Ditch #31

On motion by Wetzel, seconded by Rohlfing and unanimously approved, the Board authorized a 227% lien for Le Sueur County Ditch #31 in the amount of \$25,580.81 to be spread over five years beginning with taxes payable in 2017. The interest rate is 4% and the lien will be filed July 22, 2016. Minimum per parcel is \$5.00 and any assessment of \$50.00 or under shall be payable in one year. There were 0 public comments.

County Ditch #42

On motion by Gliszinski, seconded by Rohlfing and unanimously approved, the Board authorized a 135% lien for Le Sueur County Ditch #42 in the amount of \$11,000.15 to be spread over five years beginning with taxes payable in 2017. The interest rate is 4% and the lien will be filed July 22, 2016. Minimum per parcel is \$5.00 and any assessment of \$50.00 or under shall be payable in one year. There were 0 public comments.

County Ditch #58

On motion by Rohlfing, seconded by Connolly and unanimously approved, the Board authorized a 310% lien for Le Sueur County Ditch #58 in the amount of \$155,116.60 to be spread over ten years beginning with taxes payable in 2017. The interest rate is 4% and the lien will be filed July 22, 2016. Minimum per parcel is \$5.00 and any assessment of \$50.00 or under shall be payable in one year. There were 0 public comments.

County Ditch #59

On motion by Gliszinski, seconded by Wetzel and unanimously approved, the Board authorized a 36% lien for Le Sueur County Ditch #59 in the amount of \$23,347.05 to be spread over five years beginning with taxes payable in 2017. The interest rate is 4% and the lien will be filed July 22, 2016. Minimum per parcel is \$5.00 and any assessment of \$50.00 or under shall be payable in one year. There were 0 public comments.

County Ditch #64

On motion by Rohlfing, seconded by Connolly and unanimously approved, the Board authorized a 130% lien for Le Sueur County Ditch #64 in the amount of \$88,335.20 to be spread over ten years beginning with taxes payable in 2017. The interest rate is 4% and the lien will be filed July 22, 2016. Minimum per parcel is \$5.00 and any assessment of \$50.00 or under shall be payable in one year. There were 0 public comments.

On motion by Rohlfing, seconded by Wetzel and unanimously approved, the Board approved to close the public hearings at 10:46 a.m.

Ann Traxler, Tammy Stewig and Pam Voit appeared before the Board with a presentation on the Socorro, New Mexico trip.

Darrell Pettis, County Administrator/Engineer appeared before the Board with several items for approval and consideration.

On motion by Rohlfing, seconded by Wetzel and unanimously approved, the Board approved and authorized the Chair and Administrator to sign the Cooperative Construction Lighting Agreement and Resolution for the County Road 118 and Trunk Highway 19 Intersection.

On motion by Gliszinski, seconded by Connolly and unanimously approved, the Board approved to submit a MnDOT speed zone request for County Road 29 and possible signage by the County Engineer.

On motion by Wetzel seconded by Rohlfing and unanimously approved, the Board approved the repair of the Le Center Cold Storage Building by Allied Overhead Door in the amount of \$5,520 and Jon Schabert Construction in the amount of \$29,631.45.

On motion by Wetzel, seconded by Gliszinski and unanimously approved, the Board approved the Waterville shop final payment to Moh's Construction in the amount of \$1,610.

On motion by Gliszinski, seconded by Wetzel and unanimously approved, the Board approved to set a future date for a County Ditch #19 and 63 redetermination information public hearing.

On motion by Connolly, seconded by Wetzel and unanimously approved, the Board adjourned until Tuesday, July 5, 2016 at 9:00 a.m.

ATTEST:

Le Sueur County Administrator

Le Sueur County Chairman

Summary Minutes of Le Sueur County Board of Commissioners Meeting, June 28, 2016

- This is only a summary publication per MN Statutes 375.12 and 331A.01 sub. 10. The complete minutes are on file in the Le Sueur County Administrator's Office at 88 S Park Ave. Le Center, MN and are available at www.co.le-sueur.mn.us.
- The Le Sueur County Board of Commissioners met in regular session on Tuesday, June 28, 2016 at 9:00 a.m. in the Courthouse at Le Center, Minnesota. Those members present were: John King, Dave Gliszinski, Steve Rohlffing, Lance Wetzel and Joe Connolly. Darrell Pettis and Brent Christian were also present.
- Approved the agenda for the business of the day. (Connolly-Wetzel)
- Approved the consent agenda. (Gliszinski-Rohlffing)
- The Board accepted the Unimin Annual Reports and set the 2016 Annual Performance Bonds in the amount of \$2,741,941 for the Kasota Plants and \$2,591,839 for the Ottawa Plant. A donation by Unimin to the Historical Society in the amount of \$7,500 was also acknowledged. (Wetzel-Rohlffing)
- The Board granted a Conditional Use Permit to Socore Red Maple LLC, Chicago, IL, (Applicant): Kathleen Regenscheid Revocable Trust, (Owner) with conditions and findings are on file at the Planning and Zoning Office. (Rohlffing-Connolly)
- The Board granted a Conditional Use Permit to Lyra Community Solar Garden, Edina, MN, (Applicant): Larry & Solveig Theis, Shakopee, MN, (Owner) with conditions and findings are on file at the Planning and Zoning Office. (Wetzel-Gliszinski)
- Approved a resolution opting out of the requirements Minnesota Statutes, Section 394.307 for Temporary Family Health Care Dwellings. (Rohlffing-Wetzel)
- Approved to post the reclassification announcement for the full time Assistant Planning and Zoning in Environmental, Planning and Zoning, as a Grade 11, Step 1 at \$23.42 per hour. (Rohlffing-Gliszinski)
- Approved to place the County Attorney's clerical staff on the Le Sueur County vacation and sick leave schedule. (Connolly-Rohlffing)
- Closed the Board of Appeal and Equalization at 10:05 a.m. (Connolly-Rohlffing)
- Authorized a 62% lien for Le Sueur County Ditch #6 in the amount of \$27,225.30 to be spread over ten years beginning with taxes payable in 2017. The interest rate is 4% and the lien will be filed July 22, 2016. Minimum per parcel is \$5.00 and any assessment of \$50.00 or under shall be payable in one year. There were 3 public comments. (Rohlffing-Wetzel)
- Authorized a 93% lien for Le Sueur County Ditch #29 in the amount of \$72,865.45 to be spread over ten years beginning with taxes payable in 2017. The interest rate is 4% and the lien will be filed July 22, 2016. Minimum per parcel is \$5.00 and any assessment of \$50.00 or under shall be payable in one year. There were 0 public comments. (Connolly-Gliszinski)
- Authorized a 227% lien for Le Sueur County Ditch #31 in the amount of \$25,580.81 to be spread over five years beginning with taxes payable in 2017. The interest rate is 4% and the lien will be filed July 22, 2016. Minimum per parcel is \$5.00 and any assessment of \$50.00 or under shall be payable in one year. There were 0 public comments. (Wetzel-Rohlffing)
- Authorized a 135% lien for Le Sueur County Ditch #42 in the amount of \$11,000.15 to be spread over five years beginning with taxes payable in 2017. The interest rate is 4% and the lien will be filed July 22, 2016. Minimum per parcel is \$5.00 and any assessment of \$50.00 or under shall be payable in one year. There were 0 public comments. (Gliszinski-Rohlffing)
- Authorized a 310% lien for Le Sueur County Ditch #58 in the amount of \$155,116.60 to be spread over ten years beginning with taxes payable in 2017. The interest rate is 4% and the lien will be filed July 22, 2016. Minimum per parcel is \$5.00 and any assessment of \$50.00 or under shall be payable in one year. There were 0 public comments. (Rohlffing-Connolly)
- Authorized a 36% lien for Le Sueur County Ditch #59 in the amount of \$23,347.05 to be spread over five years beginning with taxes payable in 2017. The interest rate is 4% and the lien will be filed July 22, 2016. Minimum per parcel is \$5.00 and any assessment of \$50.00 or under shall be payable in one year. There were 0 public comments. (Gliszinski-Wetzel)

- Authorized a 130% lien for Le Sueur County Ditch #64 in the amount of \$88,335.20 to be spread over ten years beginning with taxes payable in 2017. The interest rate is 4% and the lien will be filed July 22, 2016. Minimum per parcel is \$5.00 and any assessment of \$50.00 or under shall be payable in one year. There were 0 public comments. (Rohlfing-Connolly)
 - Closed the public hearings at 10:46 a.m. (Rohlfing-Wetzel)
 - Approved the Cooperative Construction Lighting Agreement and Resolution for the County Road 118 and Trunk Highway 19 Intersection. (Rohlfing-Wetzel)
 - Approved to submit a MnDOT speed zone request for County Road 29 and possible signage by the County Engineer. (Gliszinski-Connolly)
 - Approved the repair of the Le Center Cold Storage Building. (Wetzel-Rohlfing)
 - Approved the Waterville shop final payment to Moh's Construction. (Wetzel-Gliszinski)
 - Approved to set a future date for a County Ditch #19 and 63 redetermination information public hearing. (Gliszinski-Wetzel)
 - Adjourned until Tuesday, July 5, 2016 at 9:00 a.m. (Connolly-Wetzel)
- ATTEST: Le Sueur County Administrator Le Sueur County Chairman

Minutes of Le Sueur County Board of Appeal and Equalization Meeting Tuesday, June 28, 2016

The Le Sueur County Board of Equalization was reconvened on Tuesday, June 28, 2016 at 10:00 a.m. in the Courthouse at Le Center, Minnesota. Those members present were: Joseph Connolly, Steve Rohlfing, Lance Wetzel, John King, David Gliszinski and Pam Simonette. Also present were Shayne Bender, Brent Christian and Darrell Pettis.

Chairman King called the meeting back to order.

Shayne Bender, County Assessor, gave an overview of the process and the work that has been done since the last meeting.

On motion by Wetzel, seconded by Connolly and unanimously approved, the Board accepted the recommendations of the County Assessor and ordered the following 2016 parcel assessment changes:

Property Owner	Parcel #	Valuation Appeals			Classification Appeals	
		Assessor Total EMV	Board Total EMV	Change (+/-) in EMV (\$)	Assessor Class	Board Class
Yvonne Vanveldhuizen	08.025.8700	168,900	114,000	-54,900		
Fredrickson Prop. Inc.	22.470.1170	76,100	70,100	-6,000		
Chad Washa	22.480.0100	68,200	29,800	-38,400		
Julie Litzau	23.701.0020	327,400	320,800	-6,600		
Julie Litzau	23.609.1240			No Change		
Julie Litzau	23.609.1250			No Change		
Peterson Family Trust	13.004.3200	513,900	392,100	-121,800		
City of Le Center	20.470.0700	26,100	24,400	-1,700		
City of Le Center	20.630.0120	31,400	33,400	2,000		
Chester Ave. Prop. LLC	22.470.0830	88,100	64,900	-23,200		
Adddvantage Prop. LLC	21.800.0730				3a Comm/Ind.	Non-Rev Comm
Gary Buchta	01.700.0170	204,700	203,900	-800		
Scott Miller	01.620.0130	301,600	290,500	-11,100		
James Randolph	04.620.0170	51,800	44,900	-6,900		
Kevin Vrieze	22.015.0500			No Change		

Having no other persons to come before the Board, on motion by Rohlfing, seconded by Connolly, and unanimously approved, the 2016 Board of Appeal and Equalization was adjourned.

ATTEST:

Le Sueur County Administrator

Le Sueur County Chairman

Board of Equalization Summary Minutes

Tuesday, June 28, 2016

● This is only a summary publication per MN Statutes 375.12 and 331A.01 sub. 10. The complete minutes are on file in the Le Sueur County Administrator's Office at 88 S Park Ave. Le Center, MN and are available at www.co.le-sueur.mn.us.

● The Le Sueur County Board of Equalization was reconvened on Tuesday, June 28, 2016 at 10:00 a.m. at the Courthouse in Le Center, Minnesota. Those members present were: Joseph Connolly, Steve Rohlfing, Lance Wetzel, John King, David Gliszinski and Pam Simonette. Also present were Shayne Bender, Brent Christian and Darrell Pettis.

● The Board accepted the recommendations of the County Assessor and ordered the following 2016 parcel assessment changes: (Wetzel-Connolly)

Property Owner	Parcel #	Valuation Appeals			Classification Appeals	
		Assessor Total EMV	Board Total EMV	Change (+/-) in EMV (\$)	Assessor Class	Board Class
Yvonne Vanveldhuizen	08.025.8700	168,900	114,000	-54,900		
Fredrickson Prop. Inc.	22.470.1170	76,100	70,100	-6,000		
Chad Washa	22.480.0100	68,200	29,800	-38,400		
Julie Litzau	23.701.0020	327,400	320,800	-6,600		
Julie Litzau	23.609.1240			No Change		
Julie Litzau	23.609.1250			No Change		
Peterson Family Trust	13.004.3200	513,900	392,100	-121,800		
City of Le Center	20.470.0700	26,100	24,400	-1,700		
City of Le Center	20.630.0120	31,400	33,400	2,000		
Chester Ave. Prop. LLC	22.470.0830	88,100	64,900	-23,200		
Addvantage Prop. LLC	21.800.0730				3a Comm/Ind .	Non-Rev Comm
Gary Buchta	01.700.0170	204,700	203,900	-800		
Scott Miller	01.620.0130	301,600	290,500	-11,100		
James Randolph	04.620.0170	51,800	44,900	-6,900		
Kevin Vrieze	22.015.0500			No Change		

The 2016 Board of Appeal and Equalization was adjourned at 10:05 a.m. (Rohlfing-Connolly)

ATTEST: Le Sueur County Administrator, Le Sueur County Chairman

REPAIR REQUEST

We, the undersigned landowners, do hereby request the Le Sueur County Board of Commissioners to clean out and repair Le Sueur County Ditch # 23 located in Lexington 29 township.

Signed

[Signature]

Address/Phone #

507-381-0533

Date: 6/20/16

Description of problem: Ditch needs to be cleaned

farther down to get water through the wooded areas

Needs to be cleaned.
Roger Ruhland
6-22-16



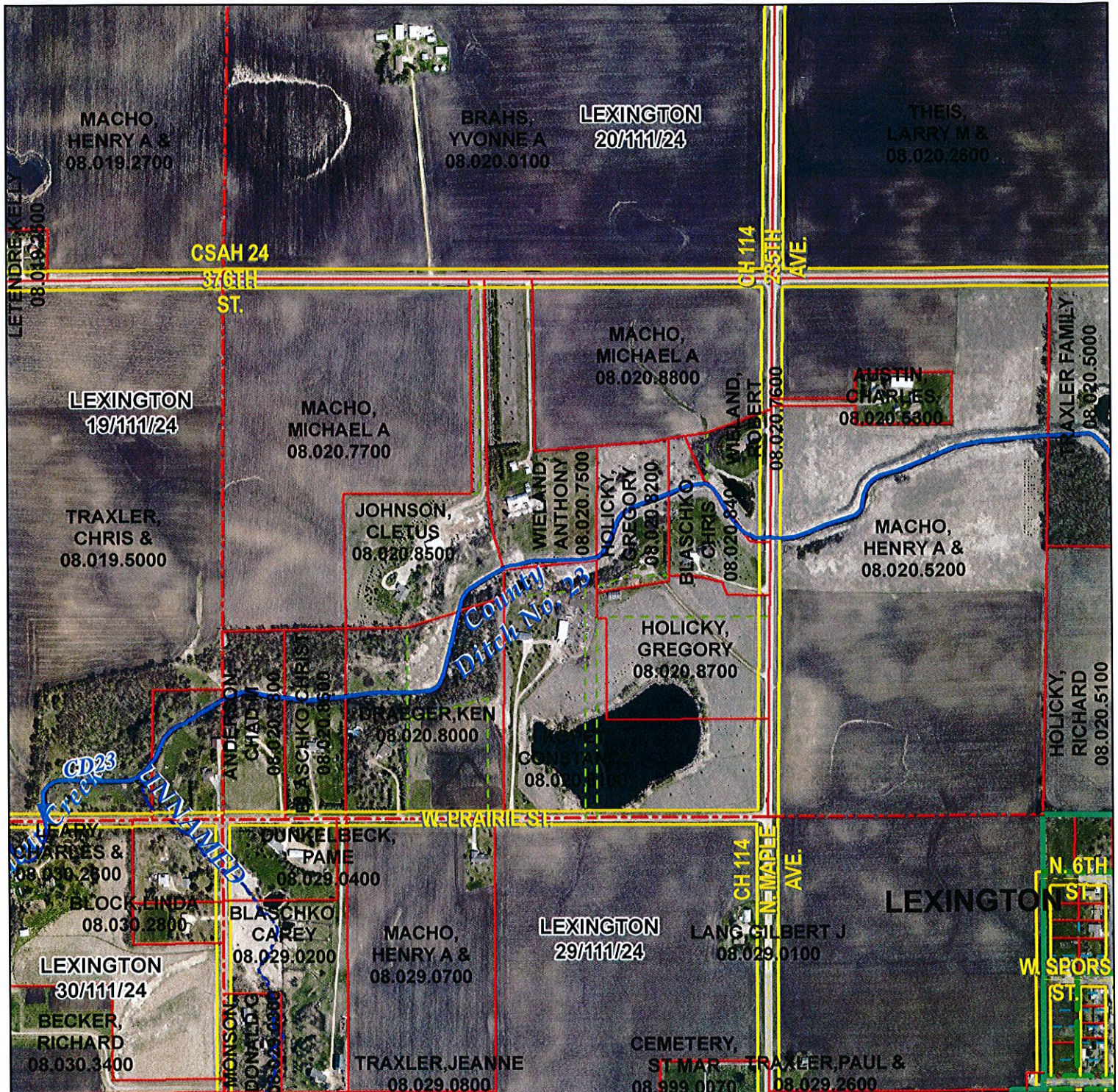
Landowner: Jeff Traxler

Contact: 507-381-0533

Le Sueur County, MN

Le Sueur Soil and Water Conservation District
Township & Section: Lexington 19

Date: 6/20/2016
Assisted By: Joe Jirik



1 inch = 660 feet



Legend	
County Ditch	Type
AlphaTag	Color Line
Parcel Line	Color Line
Road Centerline	Color Line
Road ROW	Color Line
Section Line	Color Line
Block Line 400	Color Line
Water Line	Color Line
Outcrop	Color Line



Le Sueur County Soil & Water
Conservation District

Le Sueur SWCD Tel. (507)-357-4879 Ext. 3
181 W. Minnesota St. Fax. (507)-357-6982
Le Center, MN 56057

REPAIR REQUEST

We, the undersigned landowners, do hereby request the Le Sueur County Board of Commissioners to clean out and repair Le Sueur County Ditch # 23 located in Lexington township.

Signed

Leon Kudacka

Address/Phone #

36525-211 AVE
507-357-6427

Date: 6-21, 16

Description of problem: culvert sizes need to
be larger- flooding is occurring

(Leon would like to take you
along ditch to show problems.
Needs to be cleaned.)



REPAIR REQUEST

We, the undersigned landowners, do hereby request the Le Sueur
County Board of Commissioners to clean out and repair Le Sueur
County Ditch # # 5 located in KILKENNY township.
S.D. # 5

Signed

Cletus Gregor

Address/Phone #

40650 135th
KILKENNY, MN

507-595-3650

Date: 6-14-16

Description of problem: NUMEROUS SLIDES

SLOW WATER DRAINAGE

Needs to be cleaned.

Roger Ruhlman
6-23-16

MAP OF KILKENNY

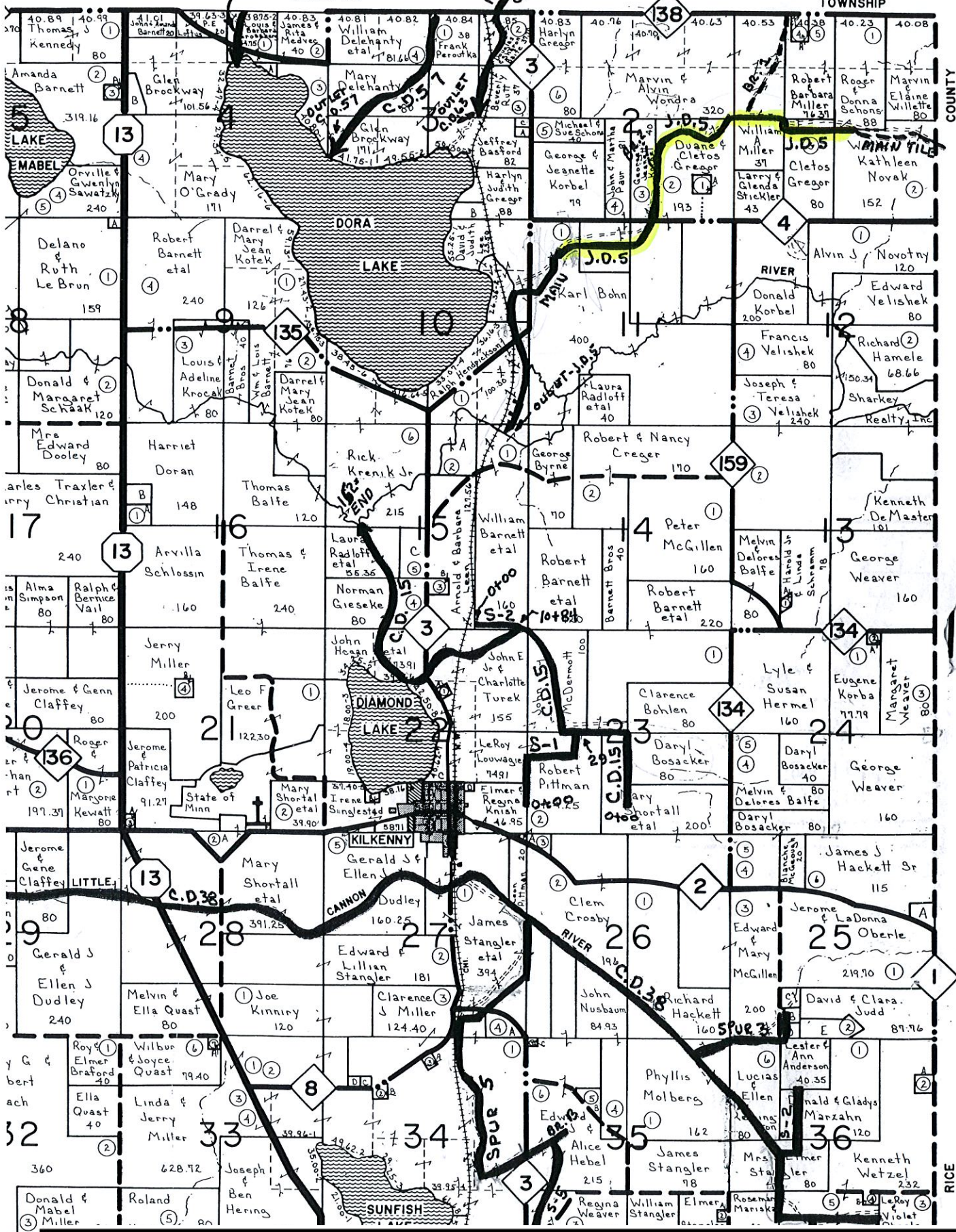


SECTION.

RANGE: 23 W.

CODE: KY

TOWNSHIP



June 2016 Transfers

- #1607 Transfer 162.10 from Revenue(Parks) to Ditch
 (#51 Lien)
- #1608 Transfer 20.00 from Revenue to Agency
 (correct war #37996)
- #1609 Transfer 39,696.69 from Env Services to Revenue
 (correct various warrants on German-Jefferson)
- #1610 Transfer 3,215.00 from Human Services to Revenue
 (A87 Q1, 2016)
- #1611 Transfer 26,400.33 from Road & Bridge to Ditch
 (Various Ditch Liens)



Le Sueur County, MN

Tuesday, July 5, 2016

Board Meeting

Item 2

9:05 a.m. Claims (5 min)

Staff Contact:



Le Sueur County, MN

Tuesday, July 5, 2016

Board Meeting

Item 3

9:10 a.m. Human Resources (10 min.)

Staff Contact:



Human Resources

88 SOUTH PARK AVENUE • LE CENTER, MINNESOTA 56057
Telephone: 507-357-8517 • Fax: 507-357-8607
Cindy Westerhouse – Human Resources Director

HUMAN RESOURCES

AGENDA ITEMS

July 5, 2016

The Employee Recognition Committee and the Le Sueur County Commissioners wish to recognize the following employees celebrating their significant length of service anniversaries.

Scott Schmidt	40 years	Highway Department
Abby Beer	10 years	Public Health
Lori Krekelberg	10 years	Public Health
Nick Cesafsky	5 years	Sheriff's Office
Shawn O'Malley	5 years	Human Services

Recommendation to reclassify Maria Frederick, full time Support Enforcement Aide in Human Services, from a Grade 3, Step 3 at \$15.77 per hour to a Grade 5, Step 1 at \$16.51 per hour, effective July 11, 2016.

Recommendation to promote Roxanne Billings-Braun, full time Agency Social Worker in Human Services, Grade 10, Step 11 at \$31.35 per hour to a full time Team Lead Social Worker in Human Services, Grade 12, Step 9 at \$32.89 per hour, effective July 11, 2016.

Recommendation to post and request the merit list for a full time Agency Social Worker in Human Services, Grade 10, Step 1 at \$22.09 per hour.

Recommendation to reclassify Kim Fillmore, full time Payroll/Benefit Specialist in Human Resources, Grade 7, Step 7 at \$22.94 per hour to a full time Payroll/Human Resources Technician, Grade 10, Step 3 at \$23.72 per hour, effective July 11, 2016.

Recommendation to grant regular status to Trisha Chimal-Simonette, full time Administrative Assistant III in Public Health, effective July 4 2016. Trisha has completed the six-month probationary period.

Recommendation to grant regular status to Jody Kubiszewski, full time Administrative Assistant III in the County Recorder's Office, effective July 4, 2016. Jody has completed the six-month probationary period.

Recommendation to hire Willis (Bill) Collins as a part time Building and Grounds Worker in the Building Maintenance Department, as a Grade 3, Step 1 at \$14.69 per hour, effective July 11, 2016.

Equal Opportunity Employer

Le Sueur County, MN

Tuesday, July 5, 2016

Board Meeting

Item 4

9:20 a.m. Jim McMillen, Maintenance (5 min)

RE: Retrofit Lighting

Staff Contact:



Le Sueur County, MN

Tuesday, July 5, 2016

Board Meeting

Item 5

9:25 a.m. Joshua Mankowski, Environmental Resources Specialist (10 min)

RE: Jefferson Shores Pond

Staff Contact:



Le Sueur County, MN

Tuesday, July 5, 2016

Board Meeting

Item 6

9:35 a.m. Jim Connelly (10 min)

RE: Introduction

Staff Contact:



Le Sueur County, MN

Tuesday, July 5, 2016

Board Meeting

Item 7

9:45 a.m. Darrell Pettis, County Administrator/Engineer

RE: Space Needs

Staff Contact:



Le Sueur County, MN

Tuesday, July 5, 2016

Board Meeting

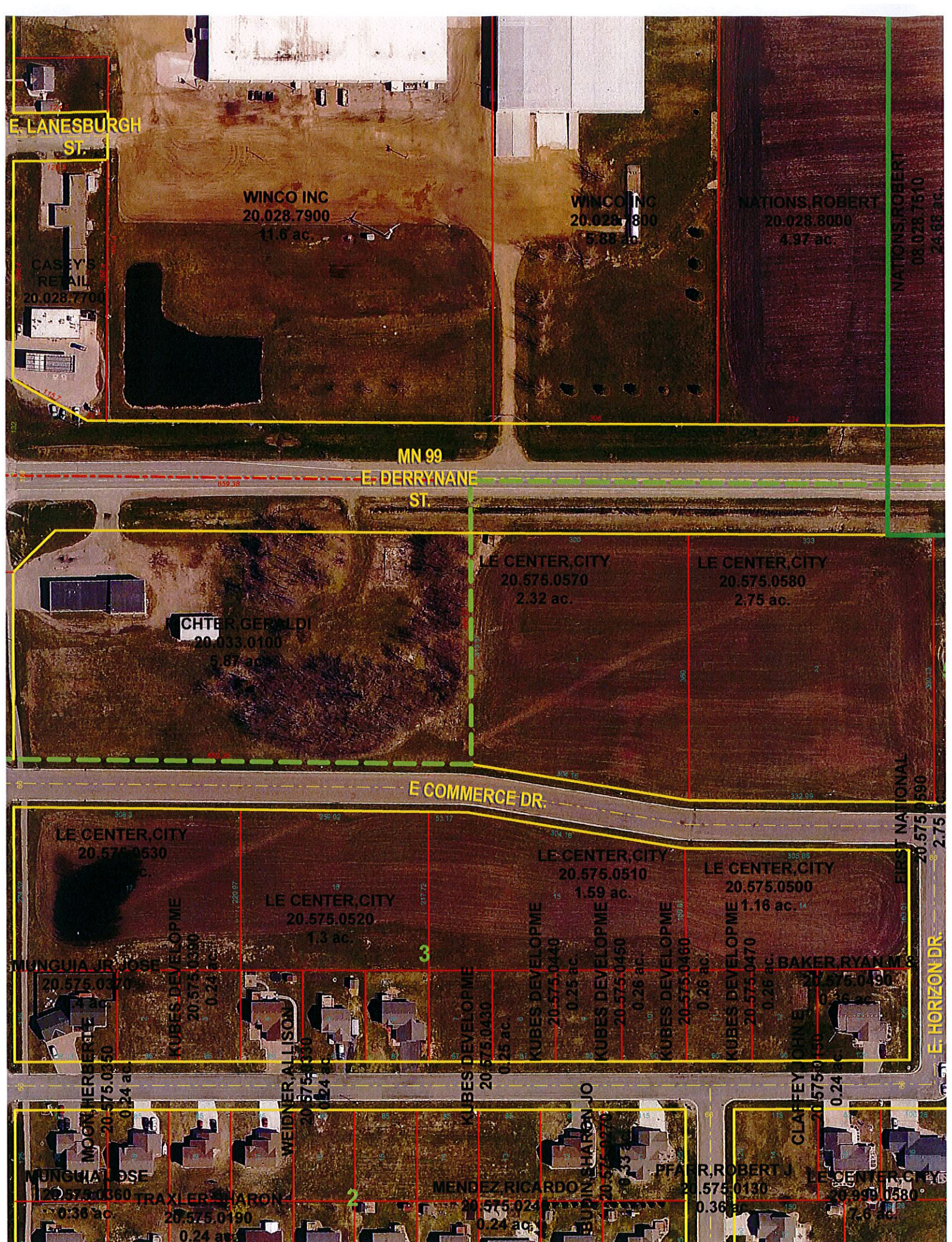
Item 8

10:00 a.m. Closed Meeting

RE: To develop offer to purchase real property, parcels 20.033.0100, 20.575.0570 and 20.575.0580

MN Stat. 13D.05 (3) (c) (3)

Staff Contact:





Summary

Parcel ID 20.033.0100
Property 305 DERRYNANE ST E
Address LE CENTER
Sec/Twp/Rng 33-111-024
Brief Sect-33 Twp-111 Range-024 5.87 AC THAT PART OF
Tax Description NW 1/4 OF NW 1/4 BEG AT NW COR OF SEC 33, TH S
 388.37 FT, E 659.38 FT, N 388.37 FT, W 659.38 FT TO
 BEG
 (Note: Not to be used on legal documents)
Deeded Acres 5.87
Class 233 - (NON-HSTD) COMM LAND & BLDGS
District (2001) LC CITY/2905-LC
School District 2905
Creation Date 06/30/1989

Owner

Primary Taxpayer
 Geraldine Richter
 468 Washington St E
 Le Center, MN 56057
 Tax ID: 20008

Valuation

	2016 Assessment	2015 Assessment	2014 Assessment	2013 Assessment
+ Estimated Building Value	\$49,900	\$68,700	\$68,700	\$57,500
+ Estimated Land Value	\$150,200	\$194,300	\$194,300	\$194,300
+ Estimated Machinery Value	\$0	\$0	\$0	\$0
= Total Estimated Market Value	\$200,100	\$263,000	\$263,000	\$251,800

Taxation

	2016 Payable	2015 Payable	2014 Payable
Total Estimated Market Value	\$263,000	\$263,000	\$251,800
- Excluded Value	\$0	\$0	\$0
- Homestead Exclusion	\$0	\$0	\$0
= Taxable Market Value	\$263,000	\$263,000	\$251,800
Net Taxes Payable	\$9,801.00	\$9,859.00	\$9,357.00
+ Special Assessments	\$7,885.00	\$8,305.00	\$8,725.00
= Total Taxes Payable	\$17,686.00	\$18,164.00	\$18,082.00

Tax Payments

2016

Full Amount

8,843.00

Pay Property Tax

There is a 2.5% convenience fee for this process. Payments will post to your account within 3-5 business days.

Partial Payment You will have the option to edit your payment amount on the billing web page after you select either the full amount or half installment button.

If you have prior year taxes unpaid, please contact the Le Sueur County Auditor-Treasurer's office for payment options.

Taxes Unpaid

	2016 Payable
Unpaid Tax	\$4,900.50
+ Unpaid Spec Asmt	\$3,942.50
+ Unpaid Fees	\$0.00
+ Unpaid Penalty	\$0.00
+ Unpaid Interest	\$0.00
= Unpaid Total	\$8,843.00

Taxes Paid

Receipt #	Receipt Print Date	Bill Pay Year	Amt Adj	Amt Write Off	Amt Charge	Amt Payment
443394	5/16/2016	2016	\$0.00	\$0.00	\$0.00	(\$8,843.00)
423268	10/14/2015	2015	\$0.00	\$0.00	\$0.00	(\$9,082.00)
408240	5/14/2015	2015	\$0.00	\$0.00	\$0.00	(\$9,082.00)
389294	10/14/2014	2014	\$0.00	\$0.00	\$0.00	(\$9,041.00)
363943	4/8/2014	2014	\$0.00	\$0.00	\$0.00	(\$9,041.00)

Tax Statements

[Click here to show a list of available documents](#)

Le Sueur County makes no guarantee's of the accuracy or completeness of the information contained within.

 Developed by
Schneider The Schneider Corporation



Summary

Parcel ID 20.575.0570
Property Address COMMERCE DR
 LE CENTER
Sec/Twp/Rng N/A
Brief Tax Description HORIZON ADDITION Lot-001 Block-005 2.32 AC
 (Note: Not to be used on legal documents)
Deeded Acres 2.32
Class 233 - (NON-HSTD) COMM LAND & BLDGS
District (2001) LC CITY/2905-LC
School District 2905
Creation Date 09/25/1998

Owner

Primary Taxpayer
 City Of Le Center
 10 Tyrone St W
 Le Center, MN 56057
 Tax ID: 19523

Valuation

	2016 Assessment	2015 Assessment	2014 Assessment	2013 Assessment
+ Estimated Building Value	\$0	\$0	\$0	\$0
+ Estimated Land Value	\$60,600	\$60,600	\$60,600	\$31,500
+ Estimated Machinery Value	\$0	\$0	\$0	\$0
= Total Estimated Market Value	\$60,600	\$60,600	\$60,600	\$31,500

Taxation

	2016 Payable	2015 Payable	2014 Payable
Total Estimated Market Value	\$60,600	\$60,600	\$31,500
- Excluded Value	\$0	\$0	\$0
- Homestead Exclusion	\$0	\$0	\$0
= Taxable Market Value	\$60,600	\$60,600	\$31,500
Net Taxes Payable	\$1,983.76	\$1,995.32	\$1,034.88
+ Special Assessments	\$9,528.24	\$10,038.68	\$10,549.12
= Total Taxes Payable	\$11,512.00	\$12,034.00	\$11,584.00

Tax Payments

2016
Full Amount 5,756.00
 Pay Property Tax

There is a 2.5% convenience fee for this process. Payments will post to your account within 3-5 business days.

Partial Payment You will have the option to edit your payment amount on the billing web page after you select either the full amount or half installment button.

If you have prior year taxes unpaid, please contact the Le Sueur County Auditor-Treasurer's office for payment options.

Taxes Unpaid

	2016 Payable
Unpaid Tax	\$991.88
+ Unpaid Spec Asmt	\$4,764.12
+ Unpaid Fees	\$0.00
+ Unpaid Penalty	\$0.00
+ Unpaid Interest	\$0.00
= Unpaid Total	\$5,756.00

Taxes Paid

Receipt #	Receipt Print Date	Bill Pay Year	Amt Adj	Amt Write Off	Amt Charge	Amt Payment
442984	5/13/2016	2016	\$0.00	\$0.00	\$0.00	(\$5,756.00)
423441	10/15/2015	2015	\$0.00	\$0.00	\$0.00	(\$6,017.00)
410921	5/15/2015	2015	\$0.00	\$0.00	\$0.00	(\$6,017.00)
389645	10/15/2014	2014	\$0.00	\$0.00	\$0.00	(\$5,792.00)
374776	5/14/2014	2014	\$0.00	\$0.00	\$0.00	(\$5,792.00)

Tax Statements

[Click here to show a list of available documents](#)

Le Sueur County makes no guarantee's of the accuracy or completeness of the information contained within.

 Developed by
Schneider The Schneider Corporation



Summary

Parcel ID 20.575.0580
Property Address COMMERCE DR
 LE CENTER
Sec/Twp/Rng N/A
Brief Tax Description HORIZON ADDITION Lot-002 Block-005 2.75 AC
 (Note: Not to be used on legal documents)
Deeded Acres 2.75
Class 233 - (NON-HSTD) COMM LAND & BLDGS
District (2001) LC CITY/2905-LC
School District 2905
Creation Date 09/25/1998

Owner

Primary Taxpayer
 City Of Le Center
 10 Tyrone St W
 Le Center, MN 56057
 Tax ID: 19523

Valuation

	2016 Assessment	2015 Assessment	2014 Assessment	2013 Assessment
+ Estimated Building Value	\$0	\$0	\$0	\$0
+ Estimated Land Value	\$71,900	\$71,900	\$71,900	\$37,400
+ Estimated Machinery Value	\$0	\$0	\$0	\$0
= Total Estimated Market Value	\$71,900	\$71,900	\$71,900	\$37,400

Taxation

	2016 Payable	2015 Payable	2014 Payable
Total Estimated Market Value	\$71,900	\$71,900	\$37,400
- Excluded Value	\$0	\$0	\$0
- Homestead Exclusion	\$0	\$0	\$0
= Taxable Market Value	\$71,900	\$71,900	\$37,400
Net Taxes Payable	\$2,355.88	\$2,368.56	\$1,229.23
+ Special Assessments	\$9,582.12	\$10,095.44	\$10,608.77
= Total Taxes Payable	\$11,938.00	\$12,464.00	\$11,838.00

Tax Payments

2016

Full Amount 5,969.00
 Pay Property Tax

There is a 2.5% convenience fee for this process. Payments will post to your account within 3-5 business days.

Partial Payment You will have the option to edit your payment amount on the billing web page after you select either the full amount or half installment button.

If you have prior year taxes unpaid, please contact the Le Sueur County Auditor-Treasurer's office for payment options.

Taxes Unpaid

	2016 Payable
Unpaid Tax	\$1,177.94
+ Unpaid Spec Asmt	\$4,791.06
+ Unpaid Fees	\$0.00
+ Unpaid Penalty	\$0.00
+ Unpaid Interest	\$0.00
= Unpaid Total	\$5,969.00

Taxes Paid

Receipt #	Receipt Print Date	Bill Pay Year	Amt Adj	Amt Write Off	Amt Charge	Amt Payment
442985	5/13/2016	2016	\$0.00	\$0.00	\$0.00	(\$5,969.00)
423442	10/15/2015	2015	\$0.00	\$0.00	\$0.00	(\$6,232.00)
410922	5/15/2015	2015	\$0.00	\$0.00	\$0.00	(\$6,232.00)
389646	10/15/2014	2014	\$0.00	\$0.00	\$0.00	(\$5,919.00)
374777	5/14/2014	2014	\$0.00	\$0.00	\$0.00	(\$5,919.00)

Tax Statements

[Click here to show a list of available documents](#)

Le Sueur County makes no guarantee's of the accuracy or completeness of the information contained within.

 Developed by
Schneider The Schneider Corporation



Le Sueur County, MN

Tuesday, July 5, 2016

Board Meeting

Item 9

10:30 a.m. 4-H Building Work Session

Staff Contact:



Le Sueur County, MN

Tuesday, July 5, 2016

Board Meeting

Item 10

Future Meetings

Staff Contact:

Future Meetings July – August 2016

July 4, 2016	Offices Closed – Independence Day
July 5, 2016	Board Meeting, 9:00 a.m. *4H Building Workshop, 10:30 a.m. *CHB Meeting, 1:00 p.m. Waterville Senior Center
July 12, 2016	No Board Meeting
July 14, 2016	P&Z Meeting, 7:00 p.m. Environmental Services Building
July 19, 2016	Board Meeting, 9:00 a.m.
July 21, 2016	Board of Adjustment Meeting, 3:00 p.m. Environmental Services Building
July 26, 2016	Board Meeting, 9:00 a.m. *CD #52 Redetermination Informational Public Hearing *1:30 p.m. Meeting with Rice County Board, LSC Commissioner's Room (CD #38)
August 2, 2016	Board Meeting, 9:00 a.m.
August 9, 2016	No Board Meeting *Employee Appreciation Lunch, 11:00 a.m. - 1:00 p.m. Courthouse Park
August 11, 2016	P&Z Meeting, 7:00 p.m. Environmental Services Building
August 16, 2016	Board Meeting, 9:00 a.m.
August 18, 2016	Board of Adjustment Meeting, 3:00 p.m. Environmental Services Building

August 22, 2016	Budgets 9:00 a.m. – 3:00 p.m.
August 23, 2016	Board Meeting, 9:00 a.m. *Budgets 10:30 a.m. – 12:00 p.m.
August 30, 2016	No Board Meeting