



---

# Le Sueur County, MN

Tuesday, June 28, 2016

Board Meeting

## Item 7

**10:15 a.m. Ditches Public Hearing (30 min)**

*RE: CD # 6, 29, 31, 42, 58, 59, and 64*

Staff Contact:



**MAP KEY**

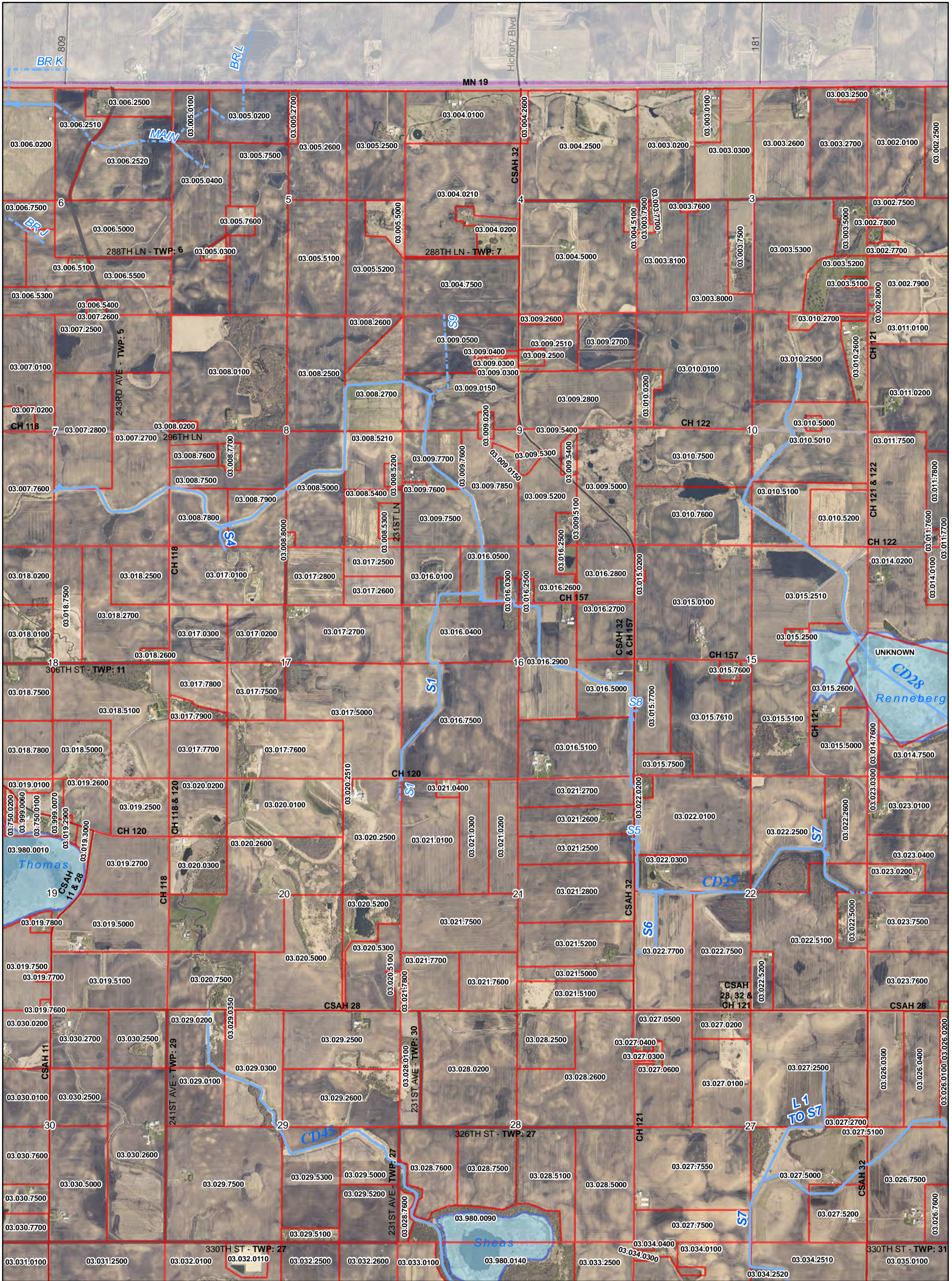
COUNTY DITCH	CITY
MAIN	LAKE
SPUR	
TILE	
Parcels	
<b>ROADS</b>	
US Highway	
MN Highway	
CSAH	
County Road	
Township Road	
Municipal Street	
State Park Road	
State Game Preserve Road	
Private Road - Open to public	
Unspecified	



PLEASE REPORT MAP CHANGES TO:  
 LE SUEUR COUNTY GIS DEPARTMENT  
 GIS@CO.LE-SUEUR.MN.US  
 507.357.8577

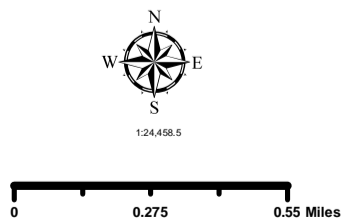
**County Ditch 6**

Date: 5/11/2016  
 Coordinate System: NAD 1983 HARN Aug MN Lx Sueur Feet  
 Projection: Lambert Conformal Conic  
 Datum: NAD 1983 HARN Aug MN Lx Sueur  
 False Easting: 500,000.0000  
 False Northing: 500,000.0000  
 Central Meridian: -93.1333  
 Standard Parallel 1: 44.3000  
 Standard Parallel 2: 44.6667  
 Latitude Of Origin: 44.1847  
 Units: Foot US  
 MAP CREATED BY:  
 Justin Lueteman  
 Le Sueur County GIS Manager  
 jlueteman@co.lesueur.mn.us  
 507.357.8577



**MAP KEY**

COUNTY DITCH	CITY
MAIN	LAKE
SPUR	
TILE	
PARCELS	
<b>ROADS</b>	
US Highway	
MN Highway	
CSAH	
County Road	
Township Road	
Municipal Street	
State Park Road	
State Game Preserve Road	
Private Road - Open to public	
Unspecified	

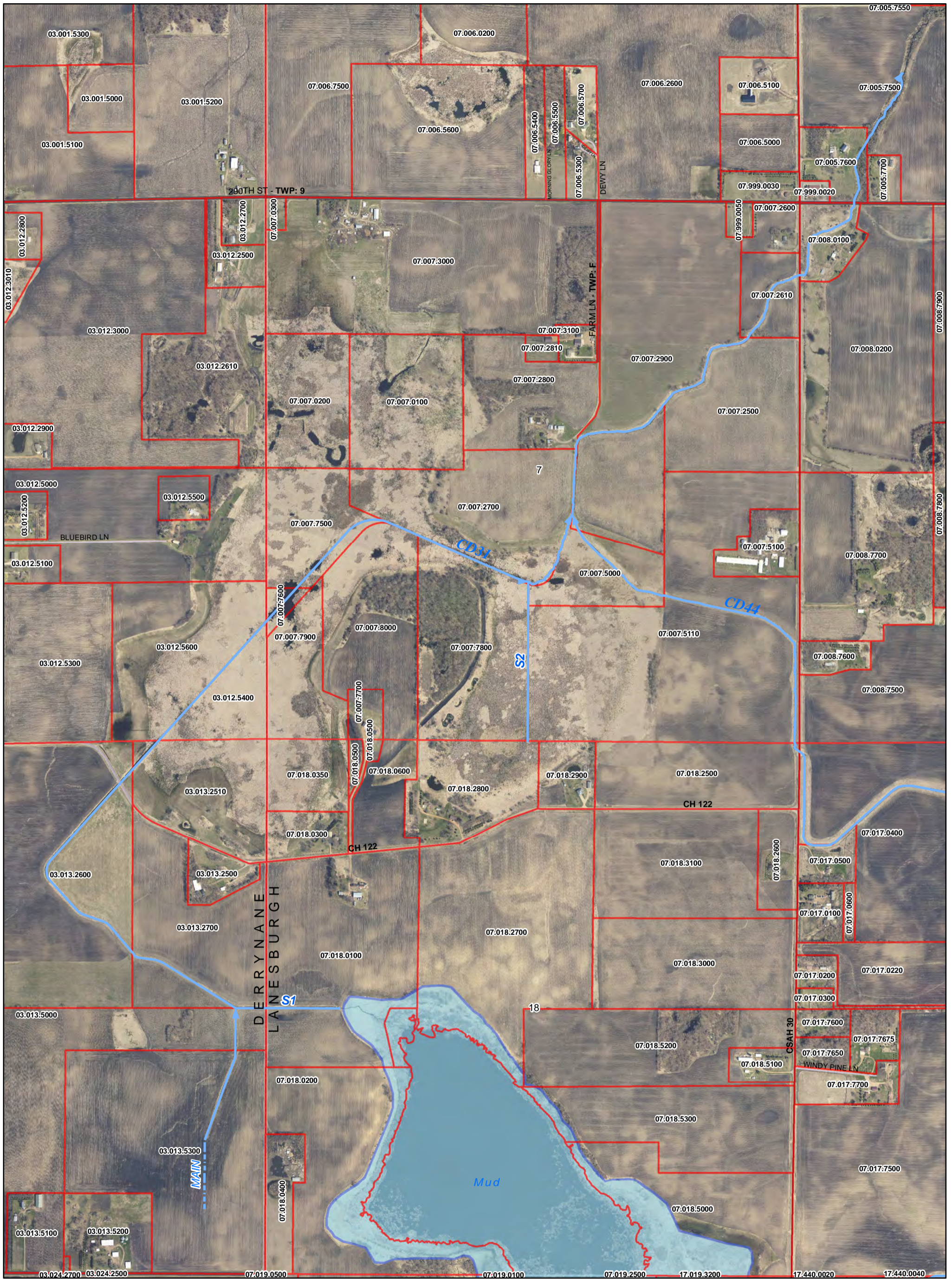


PLEASE REPORT MAP CHANGES TO:  
 LE SUEUR COUNTY GIS DEPARTMENT  
 GIS@COLE-SUEUR.MN.US  
 507.357.8577

# County Ditch 29

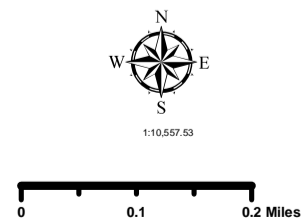


Date: 5/11/2016  
 Coordinate System: NAD 1983 HARN Aug MN Lx. Scur Feet  
 Projection: Lambert Conformal Conic  
 Datum: NAD 1983 HARN Aug MN Lx. Scur  
 False Easting: 500,000.0000  
 False Northing: 500,000.0000  
 Central Meridian: -93.1333  
 Standard Parallel 1: 44.3000  
 Standard Parallel 2: 44.6667  
 Latitude Of Origin: 44.1847  
 Units: Foot US  
 MAP CREATED BY:  
 Justin Ludeman  
 Le Sueur County GIS Manager  
 j.ludeman@co.lesueur.mn.us  
 507.357.8577



**MAP KEY**

<b>COUNTY DITCH</b>	<b>CITY</b>
MAIN	
SPUR	
TILE	
Parcels	LAKE
<b>ROADS</b>	
US Highway	
MN Highway	
CSAH	
County Road	
Township Road	
Municipal Street	
State Park Road	
State Game Preserve Road	
Private Road - Open to public	
Unspecified	



PLEASE REPORT MAP CHANGES TO:  
 LE SUEUR COUNTY GIS DEPARTMENT  
 GIS@CO.LE-SUEUR.MN.US  
 507.357.8577

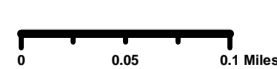
# County Ditch 31



Date: 5/11/2016  
 Coordinate System: NAD 1983 HARN Aug MN Lx Sueur Feet  
 Projection: Lambert Conformal Conic  
 Datum: NAD 1983 HARN Aug MN Lx Sueur  
 False Easting: 500,000.0000  
 False Northing: 500,000.0000  
 Central Meridian: -93.1333  
 Standard Parallel 1: 44.3000  
 Standard Parallel 2: 44.6667  
 Latitude Of Origin: 44.1847  
 Units: Feet US  
 MAP CREATED BY:  
 Justin Lutzman  
 Le Sueur County GIS Manager  
 jlutzman@co.lesueur.mn.us  
 507.357.8577



MAP KEY	
<b>COUNTY DITCH</b>	<b>CITY</b>
MAIN	+
SPUR	LAKE
TILE	
Parcels	
<b>ROADS</b>	
US Highway	
MN Highway	
CSAH	
County Road	
Township Road	
Municipal Street	
State Park Road	
State Game Preserve Road	
Private Road - Open to public	
Unspecified	

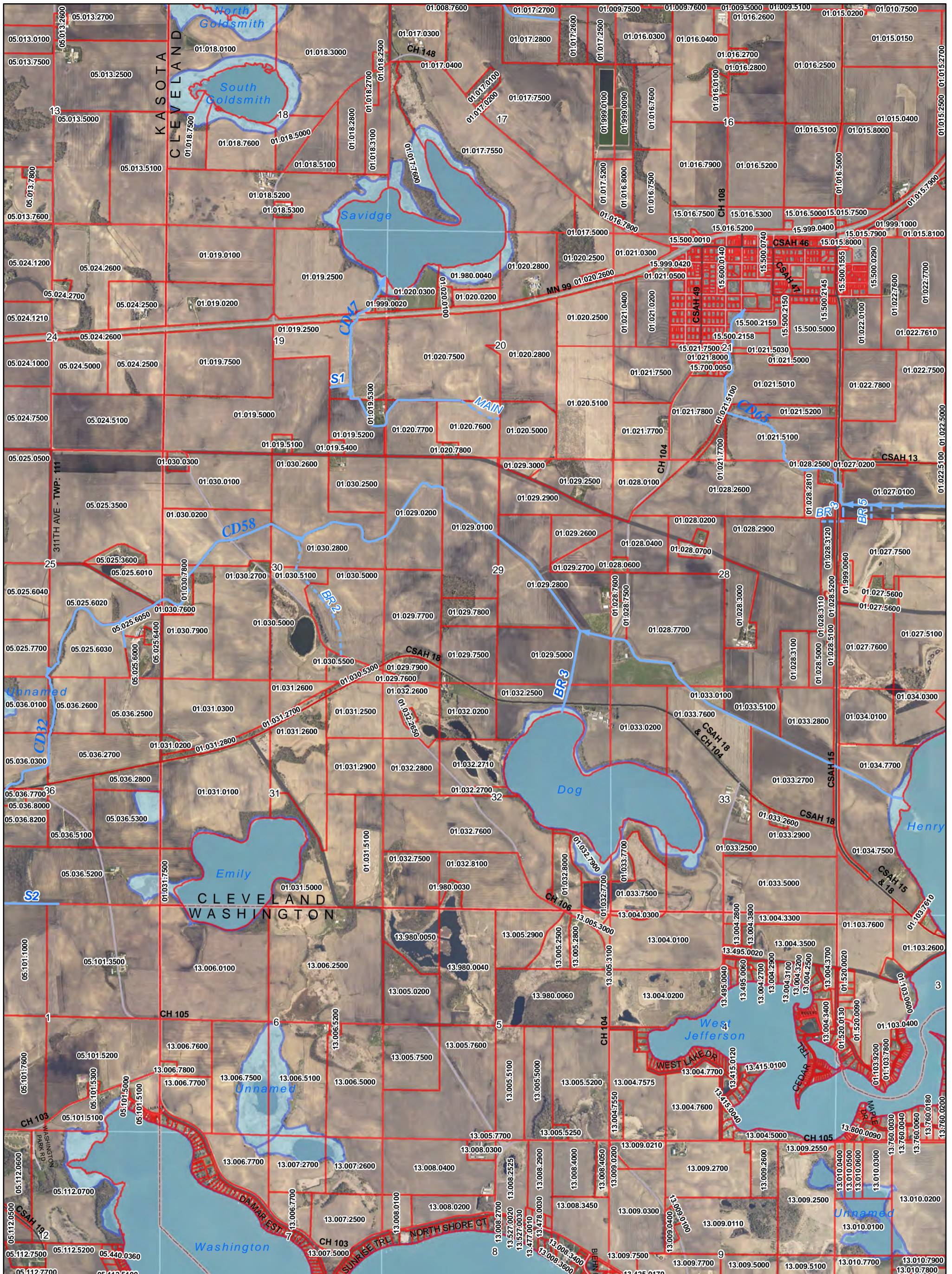


PLEASE REPORT MAP CHANGES TO:  
 LE SUEUR COUNTY GIS DEPARTMENT  
 GIS@CO.LE-SUEUR.MN.US  
 507.357.8577

# County Ditch 42

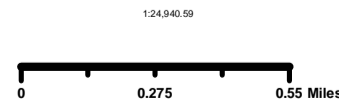


Date: 5/11/2016  
 Coordinate System: NAD 1983 HARN Aug MN Lx Scur Feet  
 Projection: Lambert Conformal Conic  
 Datum: NAD 1983 HARN Aug MN Lx Scur  
 False Easting: 500,000.0000  
 False Northing: 500,000.0000  
 Central Meridian: -93.1333  
 Standard Parallel 1: 44.3000  
 Standard Parallel 2: 44.6667  
 Latitude Of Origin: 44.1667  
 Units: Foot US  
 MAP CREATED BY:  
 Justin Lueteman  
 Le Sueur County GIS Manager  
 jlueteman@co.lesueur.mn.us  
 507.357.8577



**MAP KEY**

	COUNTY DITCH		CITY
	MAIN		LAKE
	SPUR		
	TILE		
	Parcels		
<b>ROADS</b>			
	US Highway		
	MN Highway		
	CSAH		
	County Road		
	Township Road		
	Municipal Street		
	State Park Road		
	State Game Preserve Road		
	Private Road - Open to public		
	Unspecified		

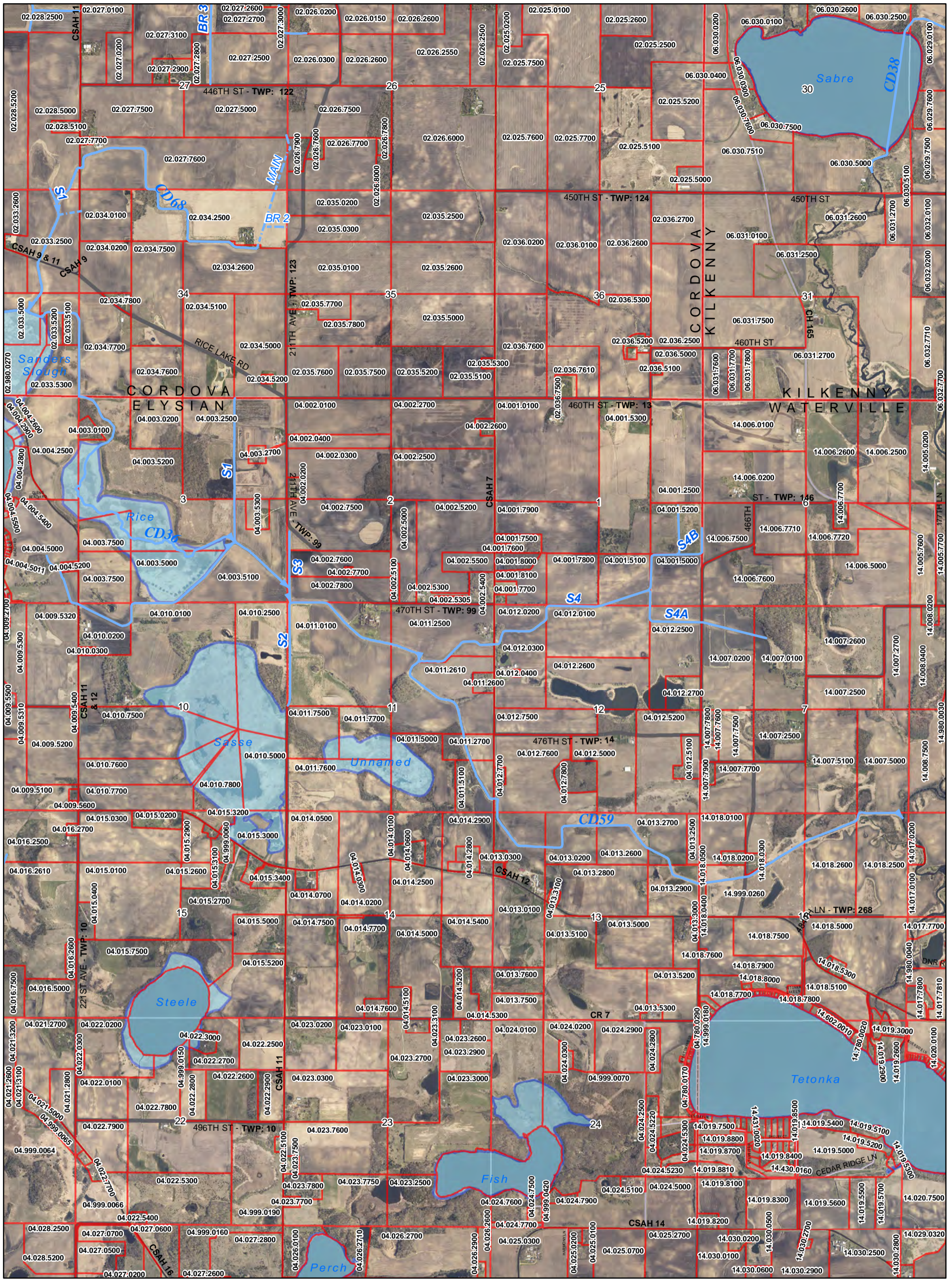


PLEASE REPORT MAP CHANGES TO:  
 LE SUEUR COUNTY GIS DEPARTMENT  
 GIS@COLE-SUEUR.MN.US  
 507.357.8577

# County Ditch 58

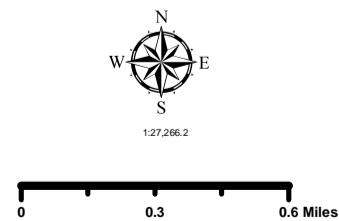


Date: 5/11/2016  
 Coordinate System: NAD 1983 HARN Aug MN Lx. Scur Foot  
 Projection: Lambert Conformal Conic  
 Datum: NAD 1983 HARN Aug MN Lx. Scur  
 False Easting: 500,000.0000  
 False Northing: 500,000.0000  
 Central Meridian: -93.1333  
 Standard Parallel 1: 44.3000  
 Standard Parallel 2: 44.6667  
 Latitude Of Origin: 44.1847  
 Units: Foot US  
 MAP CREATED BY:  
 Justin Lufersman  
 Le Sueur County GIS Manager  
 julfersm@co.lesueur.mn.us  
 507.357.8577



**MAP KEY**

COUNTY DITCH	CITY
MAIN	LAKE
SPUR	
TILE	
PARCELS	
<b>ROADS</b>	
US Highway	
MN Highway	
CSAH	
County Road	
Township Road	
Municipal Street	
State Park Road	
State Game Preserve Road	
Private Road - Open to public	
Unspecified	

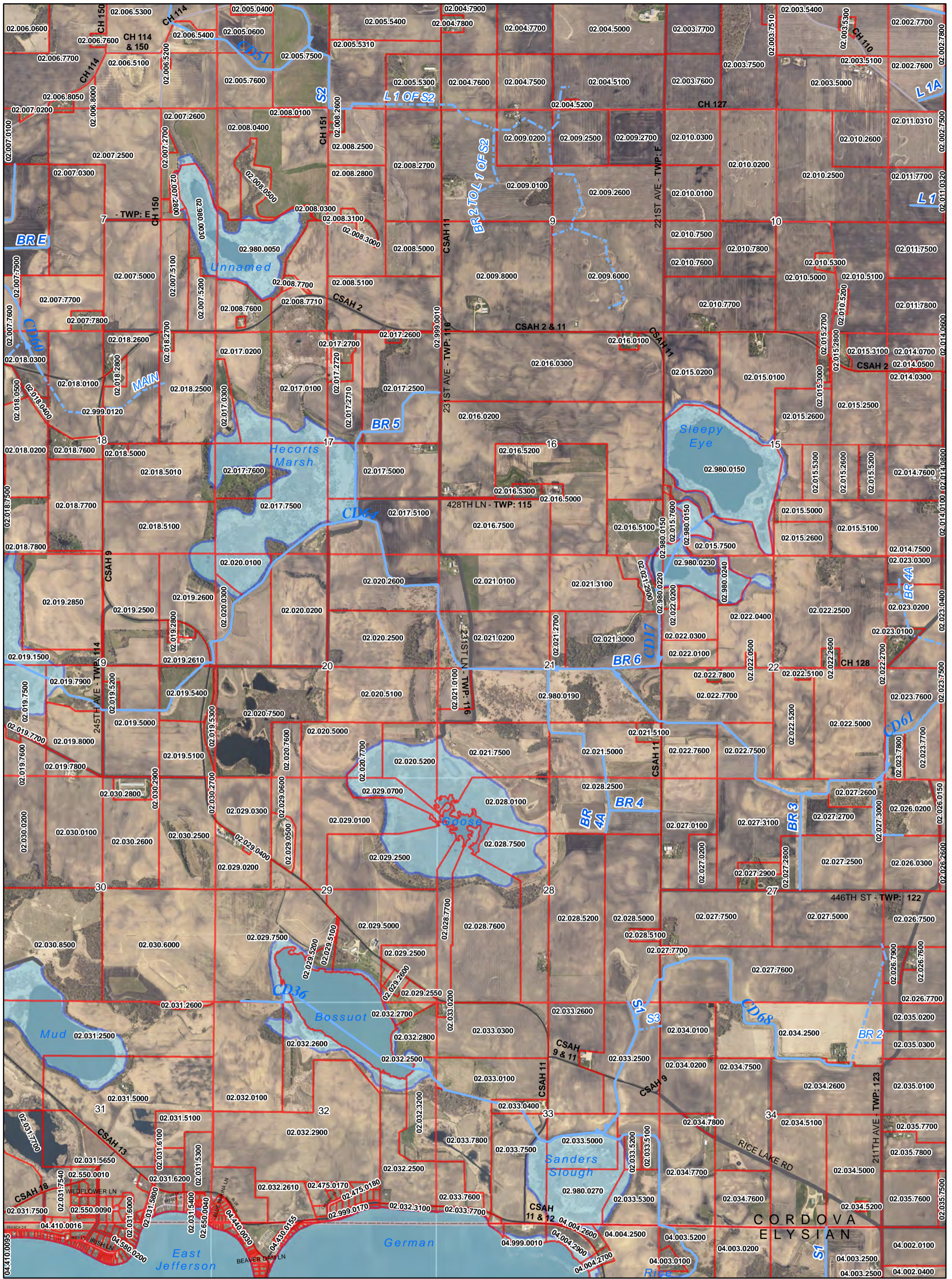


PLEASE REPORT MAP CHANGES TO:  
 LE SUEUR COUNTY GIS DEPARTMENT  
 GIS@COLE-SUEUR.MN.US  
 507.357.8577

# County Ditch 59

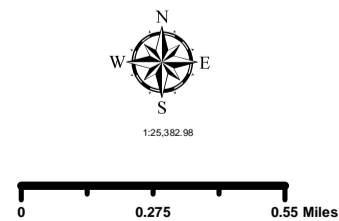


Date: 5/11/2016  
 Coordinate System: NAD 1983 HARN Aug MN L.S. Sauer Feet  
 Projection: Lambert Conformal Conic  
 Datum: NAD 1983 HARN Aug MN L.S. Sauer  
 False Easting: 500,000.0000  
 False Northing: 100,000.0000  
 Central Meridian: -93.1333  
 Standard Parallel 1: 44.3000  
 Standard Parallel 2: 44.6667  
 Latitude Of Origin: 44.1847  
 Units: Feet US  
 MAP CREATED BY:  
 Justin Ludeman  
 Le Sueur County GIS Manager  
 j.ludeman@co.lesueur.mn.us  
 507.357.8577



**MAP KEY**

COUNTY DITCH	CITY
MAIN	LAKE
SPUR	
TILE	
Parcels	
<b>ROADS</b>	
US Highway	
MN Highway	
CSAH	
County Road	
Township Road	
Municipal Street	
State Park Road	
State Game Preserve Road	
Private Road - Open to public	
Unspecified	



PLEASE REPORT MAP CHANGES TO:  
 LE SUEUR COUNTY GIS DEPARTMENT  
 GIS@COLE-SUEUR.MN.US  
 507.357.8577

# County Ditch 64



Date: 5/11/2016  
 Coordinate System: NAD 1983 HARN Aug MN L2 - Scurt Feet  
 Projection: Lambert Conformal Conic  
 Datum: NAD 1983 HARN Aug MN L2 - Scurt Feet  
 False Easting: 500,000.0000  
 False Northing: 500,000.0000  
 Central Meridian: -93.1333  
 Standard Parallel 1: 44.3000  
 Standard Parallel 2: 44.6667  
 Latitude Of Origin: 44.1847  
 Units: Foot US  
 MAP CREATED BY:  
 Justin Lutzman  
 Le Sueur County GIS Manager  
 j.lutzman@co.lesueur.mn.us  
 507.357.8577