



Le Sueur County, MN

Tuesday, May 17, 2016

Board Meeting

Item 3

9:10 a.m. Human Services (35 min)

Staff Contact:

Human Services Board Agenda May 17, 2016 @ 9:15 a.m.

100- INFORMATION/PRESENTATIONS:

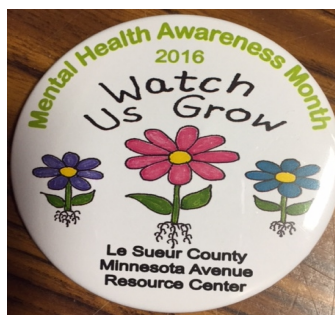
- 110 - May is Mental Health Month
 - 110.1 - Power Point Presentation
- 120 - Legislative Updates
- 130 - Human Services Performance Measures Update
 - 130.1 - Cash Assistance
 - 130.2 - SNAP Measures

200- CHARTS/GRAPHS:

- 210- Finance Graphs/Report;
- 220- Income Maintenance/Child Support Graphs;
- 230- Family Services Graphs-
 - 231- Social Services Team
 - 232- Child Services Team
 - 232.1- Out Of Home Placement Report
 - 232.2- In-Home Family Therapy Report;
 - 233- Behavioral Health Team

300- BOARD APPROVAL ITEMS:

- 310 - Commissioner's Warrants



Executive Summary

The purpose of this document is to share performance data for Le Sueur County on the two cash assistance and Supplemental Nutrition Assistance Program (SNAP) timeliness measures as they relate to the Human Services Performance Management system (referred to as the Performance Management system).

This report provides information on Le Sueur County's performance compared to the thresholds established for the system. The Performance Management system defines a threshold as the minimum level of acceptable performance below which counties will need to complete a Performance Improvement Plan (PIP), as part of the remedies process defined in statute. For counties below the threshold, an official PIP notification with instructions for completing PIP forms and a description of available technical assistance will be sent as a follow-up to this report.

Le Sueur County Performance on Cash Assistance and SNAP Measures, Calendar Year 2015

Measure	County Performance	Threshold	High Performance Standard	Statewide
Percent of Expedited SNAP Applications Processed within One Business Day	82.5%	55.0%	83.0%	59.4%
Percent of Cash Assistance and SNAP Applications Processed Timely	88.9%	75.0%	90.0%	80.6%

Le Sueur County was above the performance thresholds on both measures and will not need to complete any Performance Improvement Plans.

County performance reports are issued when data become available. Reports will be issued in 2016 as follows:

Report Issued	Program Area	Data Cycle
February 2016	Child Support	Federal Fiscal Year (FFY) 2015
April 2016	Cash and food assistance	Calendar year 2015
June 2016	Child Safety and Permanency	Calendar year 2015
	Adult Protection	Calendar year 2015
	Minnesota Family Investment Program/Diversionsary Work Program Self-Support Index	March 2015 to April 2016 annualized data
December 2016	Child Support	Federal Fiscal Year (FFY) 2016