



Le Sueur County, MN

Tuesday, March 22, 2016

Board Meeting

Item 10

Ditch Workshop

RE: Levies, Liens, Ditch Inspections, Future Ditch Maintenance, Ditch Database

Staff Contact:

**** Le Sueur County ****



CAROL
3/17/16 8:04AM

TREASURER'S CASH TRIAL BALANCE

Page 1

As of Date: 03/2016

Save Report: N

Comment:

FUND Range From 35 Thru 35

**** Le Sueur County ****



CAROL
3/17/16 8:04AM

TREASURER'S CASH TRIAL BALANCE

As of 03/2016

Page 2

<u>Fund</u>		<u>Beginning Balance</u>	<u>This Month</u>	<u>YTD</u>	<u>Current Balance</u>
35	Ditch	802	Le Sueur County Ditch #2		
		1,996.41			
	Receipts		0.00	104.73	
	Disbursements		3.26-	9.78-	
	Dept Total		3.26-	94.95	2,091.36
35	Ditch	804	Le Sueur County Ditch #4		
		629.95			
	Receipts		0.00	9.72	
	Disbursements		3.26-	9.78-	
	Dept Total		3.26-	0.06-	629.89
35	Ditch	806	Le Sueur County Ditch #6		
		5,742.83-			
	Disbursements		3.26-	1,061.28-	
	Dept Total		3.26-	1,061.28-	6,804.11-
35	Ditch	809	Le Sueur County Ditch #9		
		9,235.35			
	Disbursements		3.26-	55.78-	
	Dept Total		3.26-	55.78-	9,179.57
35	Ditch	815	Le Sueur County Ditch #15		
		4,093.98			
	Receipts		0.00	8.25	
	Disbursements		3.28-	9.84-	
	Dept Total		3.28-	1.59-	4,092.39
35	Ditch	816	Le Sueur County Ditch #16		
		1,221.54-			
	Disbursements		3.28-	9.84-	
	Dept Total		3.28-	9.84-	1,231.38-
35	Ditch	817	Le Sueur County Ditch #17		
		640.08-			
	Disbursements		3.28-	9.84-	

Copyright 2010-2015 Integrated Financial Systems

**** Le Sueur County ****



CAROL
3/17/16 8:04AM

TREASURER'S CASH TRIAL BALANCE

As of 03/2016

<u>Fund</u>		<u>Beginning Balance</u>	<u>This Month</u>	<u>YTD</u>	<u>Current Balance</u>
	Dept Total		3.28-	9.84-	649.92-
35	Ditch	818	Le Sueur County Ditch #18		
		2,567.22-			
	Disbursements		3.28-	86.47-	
	Dept Total		3.28-	86.47-	2,653.69-
35	Ditch	819	Le Sueur County Ditch #19		
		29,182.76-			
	Disbursements		3.28-	2,521.34-	
	Dept Total		3.28-	2,521.34-	31,704.10-
35	Ditch	821	Le Sueur County Ditch #21		
		4,175.92			
	Disbursements		3.28-	9.84-	
	Dept Total		3.28-	9.84-	4,166.08
35	Ditch	822	Le Sueur County Ditch #22		
		8,484.25-			
	Disbursements		3.28-	9.84-	
	Dept Total		3.28-	9.84-	8,494.09-
35	Ditch	823	Le Sueur County Ditch #23		
		54,744.30-			
	Receipts		0.00	62.78	
	Disbursements		3.28-	651.92-	
	Dept Total		3.28-	589.14-	55,333.44-
35	Ditch	826	Le Sueur County Ditch #26		
		177.03-			
	Disbursements		3.28-	9.84-	
	Dept Total		3.28-	9.84-	186.87-
35	Ditch	828	Le Sueur County Ditch #28		
		1,738.93			
	Disbursements		3.28-	2,247.87-	
	Dept Total		3.28-	2,247.87-	508.94-

**** Le Sueur County ****



CAROL
3/17/16 8:04AM

TREASURER'S CASH TRIAL BALANCE

As of 03/2016

<u>Fund</u>		<u>Beginning Balance</u>	<u>This Month</u>	<u>YTD</u>	<u>Current Balance</u>
35	Ditch	829	Le Sueur County Ditch #29		
		16,737.42-			
	Disbursements		3.28-	27,161.10-	
	Dept Total		3.28-	27,161.10-	43,898.52-
35	Ditch	831	Le Sueur County Ditch #31		
		659.11			
	Disbursements		3.28-	8,579.30-	
	Dept Total		3.28-	8,579.30-	7,920.19-
35	Ditch	832	Le Sueur County Ditch #32		
		1,298.87			
	Disbursements		3.28-	9.84-	
	Dept Total		3.28-	9.84-	1,289.03
35	Ditch	834	Le Sueur County Ditch #34		
		1,922.42-			
	Disbursements		3.28-	4,988.24-	
	Dept Total		3.28-	4,988.24-	6,910.66-
35	Ditch	835	Le Sueur County Ditch #35		
		3,744.23			
	Disbursements		3.28-	9.84-	
	Dept Total		3.28-	9.84-	3,734.39
35	Ditch	836	Le Sueur County Ditch #36		
		1,969.63			
	Disbursements		3.28-	71.34-	
	Dept Total		3.28-	71.34-	1,898.29
35	Ditch	837	Le Sueur County Ditch #37		
		3,867.39			
	Disbursements		3.28-	9.84-	
	Dept Total		3.28-	9.84-	3,857.55
35	Ditch	838	Le Sueur County Ditch #38		
		17,285.40			

Copyright 2010-2015 Integrated Financial Systems

**** Le Sueur County ****



CAROL
3/17/16 8:04AM

TREASURER'S CASH TRIAL BALANCE

As of 03/2016

Page 5

<u>Fund</u>		<u>Beginning Balance</u>	<u>This Month</u>	<u>YTD</u>	<u>Current Balance</u>
	Disbursements		3.28-	4,468.44-	
	Dept Total		3.28-	4,468.44-	12,816.96
35	Ditch	840	Le Sueur County Ditch #40		
		8,037.72			
	Disbursements		16,363.28-	33,839.52-	
	Dept Total		16,363.28-	33,839.52-	25,801.80-
35	Ditch	841	Le Sueur County Ditch #41		
		9,501.43-			
	Disbursements		3.28-	2,419.84-	
	Dept Total		3.28-	2,419.84-	11,921.27-
35	Ditch	842	Le Sueur County Ditch #42		
		4,066.22-			
	Disbursements		3.28-	662.69-	
	Dept Total		3.28-	662.69-	4,728.91-
35	Ditch	843	Le Sueur County Ditch #43		
		1,078.70-			
	Disbursements		3.28-	37.72-	
	Dept Total		3.28-	37.72-	1,116.42-
35	Ditch	844	Le Sueur County Ditch #44		
		13,757.80			
	Disbursements		3.28-	100.37-	
	Dept Total		3.28-	100.37-	13,657.43
35	Ditch	845	Le Sueur County Ditch #45		
		38,072.43-			
	Receipts		0.00	152.46	
	Disbursements		3.28-	3,589.84-	
	Dept Total		3.28-	3,437.38-	41,509.81-
35	Ditch	846	Le Sueur County Ditch #46		
		15,423.04-			
	Disbursements		3.28-	131.62-	

Copyright 2010-2015 Integrated Financial Systems

**** Le Sueur County ****



CAROL
3/17/16 8:04AM

TREASURER'S CASH TRIAL BALANCE

As of 03/2016

Page 6

<u>Fund</u>		<u>Beginning Balance</u>	<u>This Month</u>	<u>YTD</u>	<u>Current Balance</u>
	Dept Total		3.28-	131.62-	15,554.66-
35	Ditch	847	Le Sueur County Ditch #47		
		285.63			
	Receipts		0.00	35.21	
	Disbursements		3.28-	9.84-	
	Dept Total		3.28-	25.37	311.00
35	Ditch	848	Le Sueur County Ditch #48		
		7,565.82			
	Disbursements		3.28-	5,994.58-	
	Dept Total		3.28-	5,994.58-	1,571.24
35	Ditch	849	Le Sueur County Ditch #49		
		11,385.08			
	Disbursements		3.28-	9.84-	
	Dept Total		3.28-	9.84-	11,375.24
35	Ditch	850	Le Sueur County Ditch #50		
		10,448.49			
	Disbursements		3.28-	8,189.84-	
	Dept Total		3.28-	8,189.84-	2,258.65
35	Ditch	851	Le Sueur County Ditch #51		
		10,519.90-			
	Disbursements		3.28-	9,050.59-	
	Dept Total		3.28-	9,050.59-	19,570.49-
35	Ditch	852	Le Sueur County Ditch #52		
		2,898.43-			
	Disbursements		3.28-	10,769.44-	
	Dept Total		3.28-	10,769.44-	13,667.87-
35	Ditch	853	Le Sueur County Ditch #53		
		22,767.52-			
	Disbursements		3.28-	65.59-	
	Dept Total		3.28-	65.59-	22,833.11-

Copyright 2010-2015 Integrated Financial Systems

**** Le Sueur County ****



CAROL
3/17/16 8:04AM

TREASURER'S CASH TRIAL BALANCE

As of 03/2016

<u>Fund</u>		<u>Beginning Balance</u>	<u>This Month</u>	<u>YTD</u>	<u>Current Balance</u>
35	Ditch	854	Le Sueur County Ditch #54		
		57,859.28			
	Receipts		0.00	102.37	
	Disbursements		11,373.28-	22,187.64-	
	Dept Total		11,373.28-	22,085.27-	35,774.01
35	Ditch	856	Le Sueur County Ditch #56		
		3,557.41			
	Disbursements		3.28-	77.09-	
	Dept Total		3.28-	77.09-	3,480.32
35	Ditch	857	Le Sueur County Ditch #57		
		470.76-			
	Disbursements		3.28-	9.84-	
	Dept Total		3.28-	9.84-	480.60-
35	Ditch	858	Le Sueur County Ditch #58		
		28,167.28-			
	Disbursements		1,037.28-	118,097.42-	
	Dept Total		1,037.28-	118,097.42-	146,264.70-
35	Ditch	859	Le Sueur County Ditch #59		
		3,462.20-			
	Disbursements		3.28-	119.07-	
	Dept Total		3.28-	119.07-	3,581.27-
35	Ditch	860	Le Sueur County Ditch #60		
		6,452.10			
	Receipts		0.00	58.21	
	Disbursements		3.28-	780.84-	
	Dept Total		3.28-	722.63-	5,729.47
35	Ditch	861	Le Sueur County Ditch #61		
		5,127.56			
	Disbursements		3.28-	9.84-	
	Dept Total		3.28-	9.84-	5,117.72

**** Le Sueur County ****



CAROL
3/17/16 8:04AM

TREASURER'S CASH TRIAL BALANCE

As of 03/2016

<u>Fund</u>		<u>Beginning Balance</u>	<u>This Month</u>	<u>YTD</u>	<u>Current Balance</u>
35	Ditch	862	Le Sueur County Ditch #62		
		15,983.59			
	Receipts		0.00	554.16	
	Disbursements		3.28-	9.84-	
	Dept Total		3.28-	544.32	16,527.91
35	Ditch	863	Le Sueur County Ditch #63		
		25,503.34			
	Disbursements		3.28-	6,123.84-	
	Dept Total		3.28-	6,123.84-	19,379.50
35	Ditch	864	Le Sueur County Ditch #64		
		47,028.83-			
	Disbursements		3.28-	89.46-	
	Dept Total		3.28-	89.46-	47,118.29-
35	Ditch	865	Le Sueur County Ditch #65		
		799.53			
	Disbursements		3.28-	9.84-	
	Dept Total		3.28-	9.84-	789.69
35	Ditch	867	Le Sueur County Ditch #67		
		218.75-			
	Disbursements		3.28-	9.84-	
	Dept Total		3.28-	9.84-	228.59-
35	Ditch	868	Le Sueur County Ditch #68		
		24,781.10-			
	Receipts		0.00	1.27	
	Disbursements		3.28-	134.57-	
	Dept Total		3.28-	133.30-	24,914.40-
35	Ditch	869	Le Sueur County Ditch #69		
		7,928.85			
	Receipts		0.00	39.02	
	Disbursements		3.28-	2,208.09-	
	Dept Total		3.28-	2,169.07-	5,759.78

Copyright 2010-2015 Integrated Financial Systems

**** Le Sueur County ****



CAROL
3/17/16 8:04AM

TREASURER'S CASH TRIAL BALANCE

As of 03/2016

Page 9

<u>Fund</u>		<u>Beginning Balance</u>	<u>This Month</u>	<u>YTD</u>	<u>Current Balance</u>
35	Ditch	870	Le Sueur County Ditch #70		
		1,497.54			
	Disbursements		3.28-	9.84-	
	Dept Total		3.28-	9.84-	1,487.70
35	Ditch	879	Le Sueur County Ditch #45, Spur 7		
		9,037.70			
	Disbursements		3.28-	55.84-	
	Dept Total		3.28-	55.84-	8,981.86
35	Ditch	880	Le Sueur County Ditch #45, Lat. 1, Spur7		
		1,991.05			
	Disbursements		3.28-	9.84-	
	Dept Total		3.28-	9.84-	1,981.21
35	Ditch	881	Ditch #16 Redetermination(2012)		
		7,270.43-			
	Disbursements		402.65-	1,302.65-	
	Dept Total		402.65-	1,302.65-	8,573.08-
35	Ditch	882	Ls County Ditch #51, Lateral 1, Spur 1		
		375.31-			
	Disbursements		3.28-	9.84-	
	Dept Total		3.28-	9.84-	385.15-
35	Ditch	883	Ls County Ditch #51, Lat 1, Spur 2		
		100.94			
	Disbursements		3.28-	9.84-	
	Dept Total		3.28-	9.84-	91.10
35	Ditch	885	Le Sueur-Blue Earth Joint #1		
		29,450.94-			
	Receipts		0.00	167.17	
	Disbursements		3.28-	11.13-	
	Dept Total		3.28-	156.04	29,294.90-
35	Ditch	886	Le Sueur-Blue Earth Joint #2		

Copyright 2010-2015 Integrated Financial Systems

**** Le Sueur County ****



CAROL
3/17/16 8:04AM

TREASURER'S CASH TRIAL BALANCE

As of 03/2016

<u>Fund</u>	<u>Beginning Balance</u>	<u>This Month</u>	<u>YTD</u>	<u>Current Balance</u>
	10,637.26-			
Receipts		0.00	88.35	
Disbursements		3.28-	11.26-	
Dept Total		3.28-	77.09	10,560.17-
35 Ditch	887	Le Sueur-Blue Earth Joint #15		
	20,599.16-			
Receipts		0.00	81.86	
Disbursements		3.28-	17.16-	
Dept Total		3.28-	64.70	20,534.46-
35 Ditch	888	Le Sueur-Rice Joint #5		
	49,790.28-			
Disbursements		3.28-	71.92-	
Dept Total		3.28-	71.92-	49,862.20-
35 Ditch	890	Le Sueur-Scott Joint #1		
	50,095.52-			
Disbursements		3.28-	286.32-	
Dept Total		3.28-	286.32-	50,381.84-
35 Ditch	891	Le Sueur-Scott Jt. #1, Lateral 2		
	18,443.67			
Disbursements		0.00	91.50-	
Dept Total		0.00	91.50-	18,352.17
35 Ditch	893	Le Sueur-Scott Joint #4		
	69,373.42-			
Disbursements		3.28-	9.84-	
Dept Total		3.28-	9.84-	69,383.26-
Fund Total	311,010.49-	29,366.65-	277,171.16-	588,181.65-
All Funds	311,010.49-			
Receipts		0.00	1,465.56	
Disbursements		29,366.65-	278,636.72-	
Total		29,366.65-	277,171.16-	588,181.65-

Inspection Requirement

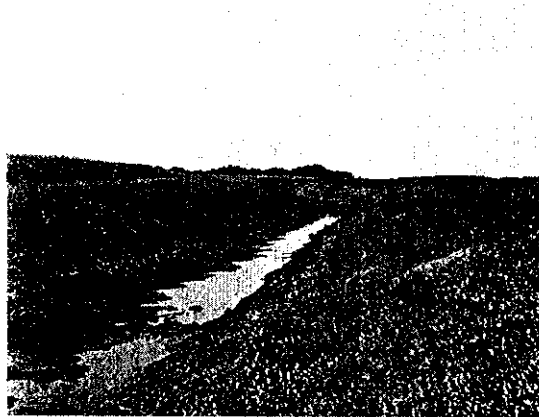
- After the construction of a drainage system has been completed, the drainage authority shall . . . have the drainage system inspected on a regular basis by an inspection committee of the drainage authority or a drainage inspector appointed by the drainage authority.
- Inspection shall include the permanent strips of perennial vegetation.
- Open drainage ditches shall be inspected at a minimum of every five years when no grass strip violation is found and annually when a grass strip violation is found, until one year after the violation is corrected.

Drainage Inspector

- Where constructed drainage systems have an aggregate cost of more than \$50,000, the board shall appoint a competent person as drainage inspector.
- The inspector shall examine the drainage systems designated by the board.
- The board shall specify the appointment period and compensation.

Inspections

- Periodic/systematic
 - On a set schedule
 - Budgeted
 - Specified criteria
 - Allows for proactive maintenance
- Reactive (no, no)
 - Complaint driven
 - Compromises rights



Stearns County Ditch 50

(Blaine v. City of Sartell, 865 N.W.2d 723 (Minn. Ct. App. 2015))

- Ditch established and constructed in 1986.
- Blaine constructs home in benefitted area in 1989
- 2009 Drainage Authority adopts inspection policy: "only at the request of a benefitted property owner."
- As of 2011 no complaints or requests for maintenance
- June and July 2011 after consecutive .5" and 1" rains, Blaine's property floods.
- Blaine sues City (negligent design/maintenance of stormwater system) and DA (negligent maintenance of drainage system)
- Drainage authority claims discretionary immunity and wins in the trial court (SJ).
- Court of Appeals reverses stating: "County has no discretion to use a reactive system." Statute mandates regular inspections.

Inspection Policy

- Drainage Authorities should have a written policy for inspecting public drainage systems, and the wording of the policy should be such as to establish a "regular basis" for inspections (it may provide for inspection at other times as well).
- Drainage Authority may choose whatever frequency it deems appropriate (consistent with statute).
- Drainage Authority, though its policy should reference the relevant considerations (such as the weighing of cost, maintenance history, susceptibility of systems to blockage, etc.).

Funding Inspections

- By ditch
- From central fund
- Basis of assessment

