



Le Sueur County, MN

Tuesday, January 19, 2016

Board Meeting

Item 5

10:20 a.m. CD #69 Public Hearing (20 min)

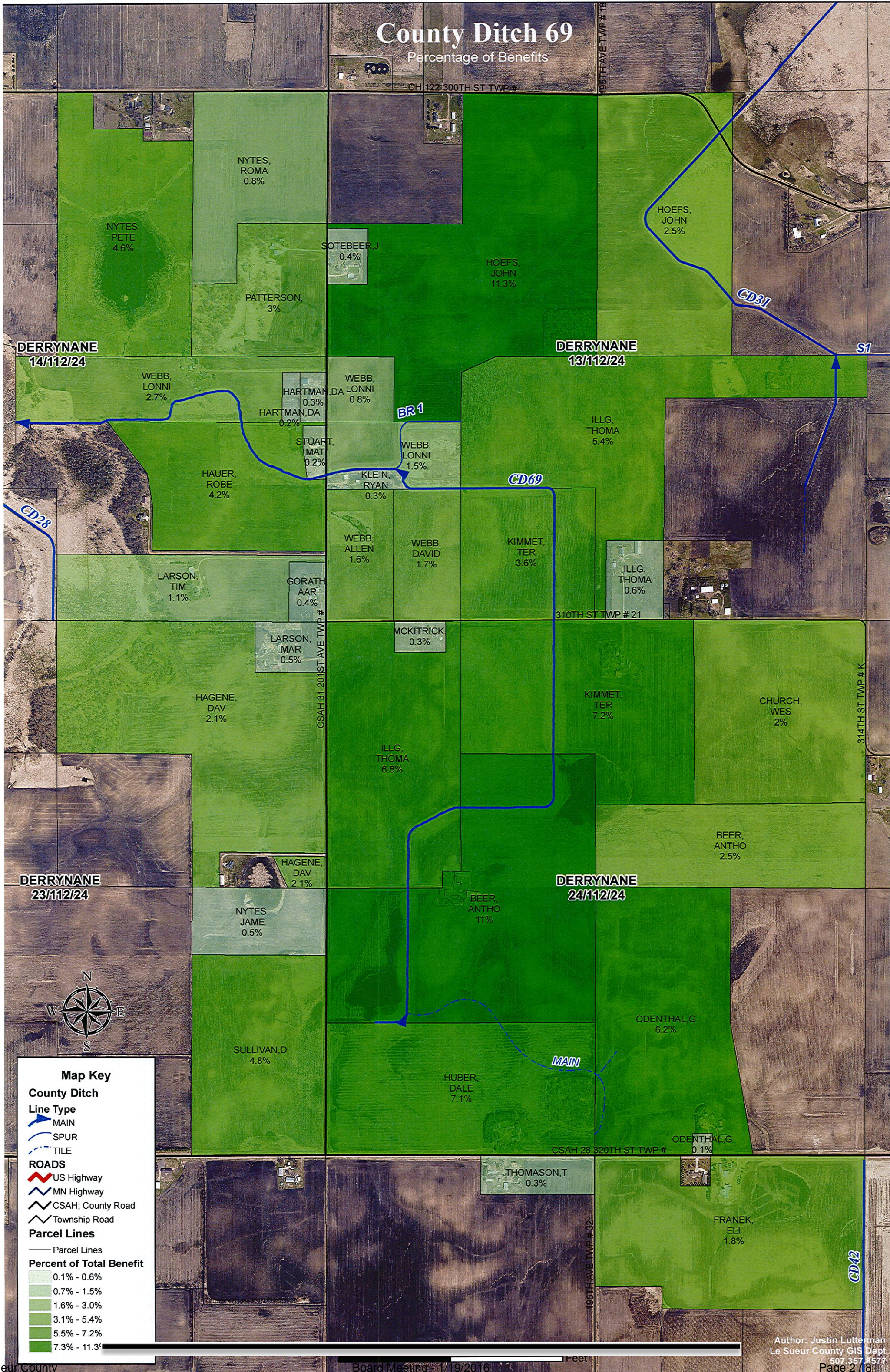
Staff Contact:

County Ditch 69

Percentage of Benefits

CH 122 300TH ST TWP #

195TH AVE TWP # 18



**Auditor's Tabular Assessment Statement *(1) For the Creation of a Fund to be used for the Repair of *(2) For the Repair of County
Ditch No. 69 in the County of Le Sueur Minnesota**

***If the lien is for the Creation of a fund to be used for repairs in the future strike out (2). If the lien is for repairs already made strike out (1).**

Names of the Owners of all Lands and the Names of all Public Roads, Corporate Roads and Railroads that are Assessed for the Repair of said Ditch.	Description of each Parcel of Land to be Assessed for the Repair of said Ditch as it Appears from Original Lien Statement for Construction of said Ditch.	Section	Township	Range	Number of acres in each tract according to assessment rolls and tax list.	Estimated number of acres benefited.	Amount that each tract of land and each public road, corp-orate road and rail-road was benefitted by the construction of said ditch.	Amount that each tract of land and each public road, corp-orate road and rail-road is liable for and must pay for the repair of such ditch.	Parcel Number, Board Meeting - Sept 13, 2011, Filing Date - September 15, 2011, 35% Lien, 4% Interest, 4 years
					Acres	Acres	Dollars	Dollars	
Sotebeer, Jerald A.	5 AC of SW 1/4 of NW 1/4	13	112	24	5.00	4.00	100.00	35.00	03.013.0300
Hoefs, John J.	SW 1/4 of NW 1/4 less 5 AC	13	112	24	35.00	34.00	850.00	297.50	03.013.0200
Hoefs, John J.	N E 1/4 of NW 1/4	13	112	24	40.00	39.00	975.00	341.25	03.013.0200
Hoefs, John J.	S E 1/4 of N W 1/4	13	112	24	40.00	40.00	1000.00	350.00	03.013.0200
Hoefs, John J.	S W 1/4 of N E 1/4	13	112	24	40.00	9.00	225.00	78.75	03.013.2600
Hoefs, John J.	N W 1/4 of N E 1/4	13	112	24	38.87	18.00	450.00	157.50	03.013.2600
Hoefs, John J.	N E 1/4 of N W 1/4 of S W 1/4	13	112	24	10.00	10.00	250.00	87.50	03.013.0200
Webb, Lonnie L.	N W 1/4 of N W 1/4 of S W 1/4	13	112	24	10.00	9.00	225.00	78.75	03.013.7500
Webb, Lonnie L.	S 1/2 of N W 1/4 of S W 1/4 less part S W of CD # 69	13	112	24	16.70	16.06	401.50	140.53	03.013.7700
Klein, Ryan J. & Dana	S 1/2 of N W 1/4 of S W 1/4 lying SW of Cd #69 & .16 AC of S W 1/4 of S W 1/4	13	112	24	3.26	3.07	76.75	26.86	03.013.7600
Webb, Allen R. c/o Webb, Lonnie L.	W 1/2 of S W 1/4 of S W 1/4 less .15 AC	13	112	24	19.85	17.87	446.75	156.36	03.013.7800
Webb, David M. & Nancy c/o Webb Lonnie L.	E 1/2 of S W 1/4 of S W 1/4 less .01 AC	13	112	24	19.99	19.00	475.00	166.25	03.013.7900
Illg, Thomas A. & Charlotte	N E 1/4 of S W 1/4 less .66 AC	13	112	24	39.34	39.00	975.00	341.25	03.013.5000
Illg, Thomas A. & Charlotte	W 40 AC of S E 1/4 less 10 AC	13	112	24	30.00	20.25	506.25	177.19	03.013.5000

Illg, Thomas A. & Charlotte	E 553.50 ft. of S 787 ft. of W 40 AC of S E 1/4	13	112	24	10.00	6.75	168.75	59.06	03.013.5100
Kimmet, Terry & Kenneth	S E 1/4 of S W 1/4	13	112	24	40.00	39.00	975.00	341.25	03.013.8000
Nytes, Peter F. & Mary M., Trust	N W 1/4 of N E 1/4 less 9.50 AC	14	112	24	30.50	15.00	375.00	131.25	03.014.2700
Nytes, Peter F. & Mary M., Trust	S W 1/4 of N E 1/4	14	112	24	40.00	35.00	875.00	306.25	03.014.2700
Nytes, Roman G. & Jeannine	N E 1/4 of N E 1/4 & W 440 ft of N 594 ft of S E 1/4 of N E 1/4	14	112	24	46.00	9.00	225.00	78.75	03.014.2600
Patterson, John L. & Violet	S E 1/4 of N E 1/4 less W 440 ft of N 594 ft	14	112	24	34.00	33.00	825.00	288.75	03.014.2500
Webb, Lonnie L.	N 1/2 of N E 1/4 of S E 1/4 less 5 AC & N 1/2 of lot 3	14	112	24	41.00	29.00	725.00	253.75	03.014.5000
Hartman, Dale & Susan	2 ac of N 1/2 of NE 1/4 of SE 1/4	14	112	24	2.00	2.00	50.00	17.50	03.014.5010
Hartman, Dale & Susan	That part of N 1/2 of N E 1/4 of S E 1/4 beg at S E cor, th N 500.11 ft, W 261.30 ft, S 500.11 ft E 261.30 ft to beg	14	112	24	3.00	3.00	75.00	26.25	03.014.5100
Stuart, Matthew P & Barbara A	That part of S 1/2 of N E 1/4 of S E 1/4 beg 692.75 ft S of E 1/4 cor of sec 14, th S 527.33 ft, W 188.81ft, N W 317.17 ft, N 221.22 ft,E 230.80 ft to beg	14	112	24	2.66	2.66	66.50	23.28	03.014.5200
Hauer, Robert H. & Judith, Trust	S 1/2 of N E 1/4 of S E 1/4 less 2.66 AC & that part of S 1/2 of G.L. # 3 lying N E of the following described line : Commencing at S E cor of sec 14, th N 659.75 ft, W 1713.68 ft to pt of beg, th N 434.50 ft, N W 332.76 ft, N W 637.48 ft and there terminating	14	112	24	26.24	24.34	608.50	212.98	03.014.5300
Hauer, Robert H. & Judith, Trust	22.89 AC of N 1/2 of S 1/2 of S E 1/4	14	112	24	22.89	21.00	525.00	183.75	03.014.5300
Larson, Timothy M. & Theresa	S 40 AC of S E 1/4 less 5 AC in S E cor	14	112	24	35.00	12.00	300.00	105.00	03.014.5600
Gorath Aaron C.&Crompton Mandy W.	5 AC in S E cor of S E 1/4 of S E 1/4	14	112	24	5.00	4.00	100.00	35.00	03.014.5500
Larson, Marvin D. & Janice	8.04 AC of N E 1/4 of N E 1/4	23	112	24	8.04	5.00	125.00	43.75	03.023.2700
Hagene, David E. & Teresa	N E 1/4 of N E 1/4 less 8.04 AC	23	112	24	31.96	13.00	325.00	113.75	03.023.2500
Hagene, David E. & Teresa	S E 1/4 of N E 1/4 less 5.13 AC	23	112	24	34.87	10.00	250.00	87.50	03.023.2500
Nytes, James L & Ruth, Trust	N 1/2 of N E 1/4 of S E 1/4	23	112	24	20.00	5.00	125.00	43.75	03.023.5200
Sullivan, Daniel J	S 1/2 of N E 1/4 of S E 1/4	23	112	24	20.00	14.00	350.00	122.50	03.023.5000
Sullivan, Daniel J	S E 1/4 of S E 1/4	23	112	24	40.00	38.00	950.00	332.50	03.023.5000
Illg, Thomas A & Charlotte	N W 1/4 of N W 1/4 less 3.50 AC	24	112	24	36.50	35.00	875.00	306.25	03.024.0100
Illg, Thomas A & Charlotte	S W 1/4 of N W 1/4 less 1.50 AC	24	112	24	38.50	37.00	925.00	323.75	03.024.0100
Mckitrick, Robert E.	3.50 AC of N W 1/4 of N W 1/4	24	112	24	3.50	3.00	75.00	26.25	03.024.0200
Kimmet, Terry & Kenneth	N E 1/4 of N W 1/4	24	112	24	40.00	39.00	975.00	341.25	03.024.2700

Beer, Anthony J.	S E 1/4 of N W 1/4 & 1.50 AC of W 1/2 of N W 1/4	24	112	24	41.50	41.00	1025.00	358.75	03.024.0300
Beer, Anthony J.	N W 1/4 of S W 1/4	24	112	24	40.00	39.00	975.00	341.25	03.024.0300
Beer, Anthony J.	N E 1/4 of S W 1/4	24	112	24	40.00	40.00	1000.00	350.00	03.024.0300
Huber, Dale E.	S W 1/4 of S W 1/4	24	112	24	40.00	38.00	950.00	332.50	03.024.7500
Huber, Dale E.	S E 1/4 of S W 1/4	24	112	24	40.00	39.00	975.00	341.25	03.024.7500
Kimmet, Terry & Kenneth	N 40 AC of W 58 AC of N E 1/4	24	112	24	40.00	39.00	975.00	341.25	03.024.2700
Western Catholic Community	N 70 AC of E 102 AC of N E 1/4	24	112	24	70.00	22.00	550.00	192.50	03.024.2500
Beer, Anthony J.	S 50 AC of N E 1/4	24	112	24	50.00	27.00	675.00	236.25	03.024.2600
Odenthal, Gary F. & Susan	N W 1/4 of S E 1/4	24	112	24	40.00	33.00	825.00	288.75	03.024.5110
Odenthal, Gary F. & Susan	S W 1/4 of S E 1/4 less 1 ac	24	112	24	39.00	34.00	850.00	297.50	03.024.5110
Odenthal, Gary F. & Susan	Comm at S 1/4 cor of Sec 24, th E 957.22 ft to beg, th N 222.13 ft, E 196.10 ft, S 222.13 ft to S line of Sec, th W 196.10 ft to beg	24	112	24	1.00	1.00	25.00	8.75	03.024.5100
Thomason, Theodore & Kecia	N 389.27 ft of E 1119 ft of N E 1/4 of N W 1/4	25	112	24	10.00	3.00	75.00	26.25	03.025.0100
Franek, Elizabeth	N W 1/4 of N E 1/4 less 2 AC	25	112	24	38.00	20.00	500.00	175.00	03.025.2500
					Grand Total:		27225.00	9528.76	

STATE OF MINNESOTA
LE SUEUR COUNTY BOARD OF COMMISSIONERS
SEATED AS DRAINAGE AUTHORITY UNDER STATUTES CHAPTER 103E
FOR LE SUEUR COUNTY DITCH 69

The matter of the Redetermination of Benefits
for Le Sueur County Ditch 69

**Order initiating Redetermination of
Benefits and Appointing Viewers**

Commissioner _____ made a motion to adopt the following Findings and Order:

WHEREAS, the Le Sueur County Board of Commissioners, Drainage Authority for Le Sueur County Ditch (LCD) 69, upon staff recommendation and upon the request of landowners within the benefitted area of LCD 69, investigated whether conditions exist to warrant the redetermination of benefits of LCD 69; and

WHEREAS, the Board noticed and held a hearing on Tuesday, January 19, 2016, for the purpose of soliciting and gathering public comment on the need for a redetermination of benefits for LCD 69; and

WHEREAS, upon investigation and the receipt of public comment, the Board has determined the following:

1. LCD 69 was established in 1964.
2. LCD 69 outlets to Renneberg Lake, in section 15 of Derrynane Township.
3. LCD 28 to provides the outlet to Renneberg Lake.
4. Upon landowner petition and findings of the drainage authority, benefits for LCD 69 were redetermined in 1992.
5. The current benefits roll reflects the benefitted and damaged properties and benefitted and damaged areas as determined in the 1992 redetermination proceedings.

[15741-0026/2211656/1]

1

6. Since the 1992 redetermination of benefits and damages, land uses and drainage practices have changed to accelerate and increase to flow of water to the drainage system changing the nature and value of benefits accruing to lands from construction of LCD 69.
7. Since the 1992 redetermination, modification to the outlet of Renneberg Lake has changed the nature of benefits accruing from the original construction of LCD 69.
8. Since the original determination of benefits and damages additional lands, not previously determined to be benefitted have improved drainage to take advantage of LCD 69 as an outlet for drainage.
9. Since the original determination of benefits and damages land values have substantially changed within the benefitted area of LCD 69.

THEREFORE, the Le Sueur County Board of Commissioners, Drainage Authority for LCD 69, finds that the conditions required for the initiation of a redetermination of benefits exist, that the original benefits and damages do not reflect reasonable present day land values and the benefitted areas have changed.

ORDER

IT IS HEREBY ORDERED that a Redetermination of Benefits, pursuant to Minnesota Statutes 103E.351 is ordered to be completed and that _____,

_____ and _____

are appointed viewers to redetermine and report the benefits and damages for LCD 69.

The motion was seconded by Commissioner _____, and after discussion, the motion _____ and the Findings and Order were _____ by a vote of ____ yes and ____ no.

Dated this ____ day of _____, 2016.

LE SUEUR COUNTY BOARD OF COMMISSIONERS
SEATED AS DRAINAGE AUTHORITY UNDER
STATUTES CHAPTER 103E FOR LE SUEUR COUNTY
DITCH 69

By _____
Chairperson