



---

# **Le Sueur County, MN**

**Tuesday, January 19, 2016**

**Board Meeting**

## **Item 1**

### **9:00 a.m. Agenda and Consent Agenda**

*RE: January 5, 2016 Minutes and Summary Minutes*

*RE: NWTF Valley Yelpers Gambling Application*

*RE: CD #22, Spur B Repair Request*

Staff Contact:

## Minutes of Le Sueur County Board of Commissioners Meeting January 5, 2016

The Le Sueur County Board of Commissioners met in regular session on Tuesday, January 5, 2016 at 9:00 a.m. in the Courthouse at Le Center, Minnesota. Those members present were: Steve Rohlfsing, John King and Joe Connolly. Lance Wetzel and Dave Gliszinski were excused. Also present were Darrell Pettis and Brent Christian.

Darrell Pettis, County Administrator, called the meeting to order and called for nominations for the Chair of the 2016 Le Sueur County Board. On motion by Rohlfsing, seconded by Connolly and unanimously approved, nominations ceased and a unanimous ballot was cast for King as 2016 Board Chair. On motion by Rohlfsing, seconded by Connolly and unanimously approved, nominations ceased and a unanimous ballot was cast for Gliszinski as 2016 Board Vice Chairman.

On motion by Connolly, seconded by Rohlfsing and unanimously approved, the Board approved the agenda for the business of the day.

On motion by Rohlfsing, seconded by Connolly and unanimously approved, the Board approved the consent agenda:

- Approved the December 22, 2016 County Board Minutes and Summary Minutes

On motion by Rohlfsing, seconded by Connolly and unanimously approved, the Board approved the year end cases and claims for Human Services:

Financial:	\$ 16,876.00
Soc Serv:	\$ 77,137.52

Pam Simonette, Auditor Treasurer appeared before the Board with a number of items for consideration.

On motion by Rohlfsing, seconded by Connolly and unanimously approved, the Board denied the waiver of penalty request by Dorothy Knish.

On motion by Rohlfsing, seconded by Connolly and unanimously approved, the Board delegated their authority to review the below listed claims before payment pursuant to M.S. 375.18, Subd 1b. to the Le Sueur County Auditor-Treasurer. These claims shall be examined in accordance with the established internal accounting and administrative control procedures to ensure the proper disbursement of public funds.

Claims to be paid under the Statute by Auditor-Treasurers' approval includes:

- Bills that are discounted when paid in specific time period
- Utilities/Telephone/Sewer & Water
- Contract/Lease Payments
- Employee's Credit Card Reimbursements
- Class Registration/Reservations

- Dues
- Postage
- Drug Investigation Money
- Tax Settlements/Apportionments
- License Fees
- Taxes & Special Assessments
- Bond Payments
- Septic Loans

On motion by Connolly, seconded by Rohlfing and unanimously approved, the Board dedicated reserves in the following funds for cash flow up to 40% of the Total Budgeted Expenditures.

The following is a list of the dedicated reserves for Le Sueur County for 2016:

Revenue Fund	5,178,197
Road & Bridge	7,231,125
Human Services	2,958,354
Environmental	384,418
Victim Witness	41,865
Solid Waste	1,633,425.34 (actual)
Bond Fund	858,482

On motion by Rohlfing, seconded by Connolly and unanimously approved, the Board designated the following financial institutions as depositories of funds for Le Sueur County in 2016 provided they furnish proper & sufficient collateral or surety bond, as needed for such deposits.

First National Bank	Le Center, MN.
First State Bank	Le Center, MN.
Frandsen Bank & Trust	Montgomery, MN.
First Farmers and Merchants Bank	Le Sueur, MN.
Cornerstone State Bank	Le Sueur, MN.
HomeTown Bank	Cleveland, MN.
Frandsen Bank & Trust	Waterville, MN.
Elysian Bank	Elysian, MN.
Wachovia Securities Inc.	Minneapolis, MN.
Magic Fund	Minneapolis, MN.
State Bank of New Prague	New Prague, MN.

On motion by Connolly, seconded by Rohlfing and unanimously approved, the Board approved the amount of interest collected on investments during the year of 2015

Total Interest Collected in 2015:	\$212,387.89
Included in the interest amount:	
Collected on daily accounts	\$ 16,144.43

Cindy Westerhouse, Human Resources Director came before the Board with several items for discussion and approval.

On motion by Connolly, seconded by Rohlfing and unanimously approved, the Board approved the recommendation to grant regular status to Tina Hering, full time Registered Nurse, in Public Health, effective December 23, 2015. Tina has completed the six-month probationary period.

On motion by Rohlfing, seconded by Connolly and unanimously approved, the Board approved the recommendation to hire Kele Lukes, full time Jailer/Dispatcher in the Sheriff's Office as a Grade 6, Step 1 at \$17.07 per hour, effective December 28, 2015.

On motion by Connolly, seconded by Rohlfing and unanimously approved, the Board approved the recommendation to post for a full time Jailer-Dispatcher Corrections Sergeant in the Sheriff's Office as a Grade 9, Step 1 at \$20.84 per hour.

On motion by Rohlfing, seconded by Connolly and unanimously approved, the Board approved the recommendation to hire George Phillips as a full time GIS Technician in the Land Records Department as a Grade 6, Step 1 at \$17.50 per hour, effective January 19, 2016.

On motion by Rohlfing, seconded by Connolly and unanimously approved, the Board approved the recommendation to hire Kyle Steinke as a full time Highway Maintenance Worker in the Highway Department as a Grade 6, Step 1 at \$17.50 per hour, effective January 19, 2016.

On motion by Connolly, seconded by Rohlfing and unanimously approved, the Board approved the recommendation to hire Amber Lazzari as a full time Agency Social Worker in Human Services as a Grade 10, Step 2 at \$22.90 per hour, effective February 1, 2016.

On motion by Rohlfing, seconded by Connolly and unanimously approved, the Board approved the recommendation to post and request the merit list for a full time Lead Eligibility Worker in Human Services as a Grade 7, Step 1 at \$18.54 per hour.

On motion by Rohlfing, seconded by Connolly and unanimously approved, the Board tabled the recommendation to post and advertise for three full time Accounting/Licensing Clerks in the Auditor – Treasurers Office as a Grade 7, Step 1 at \$18.54 per hour.

On motion by Rohlfing, seconded by Connolly and unanimously approved, the Board approved the recommendation to accept the retirement request from Denise Osterkamp, full time Administrative Assistant III in the Planning and Zoning Department, effective March 4, 2016. Denise has been employed with Le Sueur County since June 2001.

On motion by Rohlfing, seconded by Connolly and unanimously approved, the Board approved the recommendation to post and advertise for a full time Administrative Assistant III in the Planning and Zoning Department as a Grade 5, Step 1 at \$16.51 per hour.

Shayne Bender, County Assessor's Office came before the Board to review the 2015 Clerical Abatements and Additions to the Tax Rolls Annual Report.

On motion by Connolly, seconded by Rohlfsing and unanimously approved, the Board approved the Clerical Abatements and Additions to the Annual Report from the Assessor's Office.

Administrator Pettis opened and read aloud the sealed bids for the 2016 County Legal Newspaper.

On motion by Rohlfsing, seconded by Connolly and unanimously approved, the Board designated the Le Center Leader as the legal paper of the Le Sueur County Board for Financial Statements, Official Statements, Official Notices, Personal Property Lists and all legal notices required to be published in the Official Paper for the year 2016 and the Board designated the Le Sueur Herald as the second publication for the County Financial Statement for the year 2016, and accepted the legal bids for all other notices for other county newspapers, those being:  
The Elysian Enterprise, New Prague Times, and Montgomery Messenger.

Administrator Pettis appeared before the Board with a number of items for consideration and approval.

On motion by Connolly, seconded by Rohlfsing and unanimously approved, the Board approved the following 2016 Committee assignments:

Commissioner Gliszinski (1): AMC, NACO, Tri-County Solid Waste, Le Sueur-Waseca Board of Health, German – Jefferson Sewer District, Roads & Bridge, Guardian Ad Litem, Transportation Alliance, Fair Board, Planning & Zoning, Work Force Council, Labor Management, Insurance Review, Le Sueur – Rice Joint Drainage Authority, Le Sueur – Scott Joint Drainage Authority, AMC Public Safety Policy Committee, Union Negotiations, Personnel Policy Committee, Extension

Commissioner Connolly (2): AMC, NACO, Tri-County Solid Waste, Le Sueur-Waseca Board of Health, German – Jefferson Sewer District, Roads & Bridges, Insurance, Deferred Compensation, Law Library, Le Sueur County Aging & Transit, MVAC/HRA, AMC General Government Policy Committee, Le Sueur – Rice Joint Drainage Authority, Le Sueur – Scott Joint Drainage Authority

Commissioner King (3): AMC, NACO, Tri-County Solid Waste, Le Sueur-Waseca Board of Health, German – Jefferson Sewer District, Roads & Bridges, Airport Commission for Le Sueur, MSSA, Joint Powers, MCIT, Transportation Alliance, Safety Committee, Greater Blue Earth River Basin Alliance (GBERBA), Ney Foundation, Le Sueur – Waseca Regional Library, AMC Health & Human Services Policy Committee and Le Sueur – Scott Joint Drainage Authority, Le Sueur – Blue Earth Joint Drainage Authority, Regional Radio Board, Employee Reclassification Committee, Union Negotiations, Personnel Policy Committee, Extension, TH169 Coalition

Commissioner Wetzel (4): AMC, NACO, Tri-County Solid Waste, Le Sueur-Waseca Board of Health, German – Jefferson Sewer District, Roads & Bridges, Le Sueur County Developmental Services (LCDS), EMS Joint Powers, MVCOG, Cannon River Watershed, Public Health Advisory Committee, Public Health Emergency Preparedness Advisory, Family Services Collaborative, Regional Radio Board, AMC Transportation & Infrastructure Policy Committee,

Le Sueur – Rice Joint Drainage Authority, Le Sueur – Blue Earth Joint Drainage Authority and Transportation Alliance, Employee Reclassification Committee

Commissioner Rohlfsing (5): MVAC, AMC, NACO, Tri-County Solid Waste, Le Sueur-Waseca Board of Health, German – Jefferson Sewer District, Roads & Bridges, MCIT, Mental Health Advisory, Immtrack Joint Powers Board, Transportation Alliance, VIP, Scenic Byway Alliance, MN River Basins, Region 9, SBA, Le Sueur County Developmental Services (LCDS), Le Sueur – Waseca Regional Library, Mental Health Advisory, AMC Environment & Natural Resources Policy Committee, Historical Society, Le Sueur – Blue Earth Joint Drainage Authority, Airport Commission for Mankato, SHIP Community Leadership Team.

2016 Canvassing Board Members; Commissioners Rohlfsing, Wetzel and Connolly

On motion by Connolly, seconded by Rohlfsing and unanimously approved, the Board approved the burial of Mary Sasse in the Sharon Township Cemetery and consented to the Sasse family moving forward with creating an association in an effort to take over the currently abandoned cemetery.

On motion by Connolly, seconded by Rohlfsing and unanimously approved, the Board approved the final payment in the amount of \$36,536.63 on SAP 40-626-044 and SAP 40-628-029.

On motion by Connolly, seconded by Rohlfsing and unanimously approved, the following final 2015 claims were approved for payment:

<b>Warrant #</b>	<b>Vendor Name</b>	<b>Amount</b>
38914	A'Viands	\$ 7,237.30
38923	Bolton & Menk Inc.	\$ 7,122.00
38928	Carquest of Le Center	\$ 2,613.50
38937	Department of Corrections STS	\$ 15,066.38
38944	Frattalone Companies Inc.	\$ 9,425.00
38947	Genesis	\$ 12,426.80
38958	Johnson Aggregates	\$ 2,380.68
38961	Kris Engineering Inc.	\$ 2,329.08
38967	Le Sueur Co. Sheriff's Dept.	\$ 4,948.20
38968	Le Sueur Co. Soil & Water Conser.Dist.	\$ 19,982.64
38972	Little Falls Machine Inc.	\$ 2,129.31
38995	River Valley Trucking & Const.	\$ 2,230.00
38998	Sanofi Pasteur Inc.	\$ 3,985.51
39001	S.E.H. Inc.	\$ 31,482.97
39002	Selly Excavating Inc.	\$108,400.50
39004	S.M.C. Co. Inc.	\$ 32,156.19
39005	Springsted Inc.	\$ 2,750.00
39013	Supreme Outdoor Advertising	\$ 3,400.00
39015	Technical Solutions of Madison Lake Inc.	\$ 2,753.30
39020	Traxler Construction Inc.	\$ 5,275.79

<b>39033</b>	<b>Xerox Business Services LLC</b>	<b>\$ 5,594.06</b>
--------------	------------------------------------	--------------------

<b>101 Claims paid less than \$2,000.00:</b>	<b>\$ 42,518.05</b>
<b>21 Claims paid more than \$2,000.00:</b>	<b>\$283,689.21</b>
<b>122 Total all claims paid:</b>	<b>\$326,207.26</b>

On motion by Connolly, seconded by Rohlfing and unanimously approved, the Board adjourned until Tuesday January 19, 2016 at 9:00 a.m.

<b>ATTEST:</b>	_____	_____
	<b>Le Sueur County Administrator</b>	<b>Le Sueur County Chairman</b>

### **Summary Minutes of Le Sueur County Board of Commissioners Meeting, January 5, 2016**

- This is only a summary publication per MN Statutes 375.12 and 331A.01 sub. 10. The complete minutes are on file in the Le Sueur County Administrator's Office at 88 S Park Ave. Le Center, MN and are available at [www.co.le-sueur.mn.us](http://www.co.le-sueur.mn.us).
  - The Le Sueur County Board of Commissioners met in regular session on Tuesday, January 5, 2016 at 9:00 a.m. in the Courthouse at Le Center, Minnesota. Those members present were: Steve Rohlfsing, John King and Joe Connolly. Lance Wetzel and Dave Gliszinski were excused. Also present were Darrell Pettis and Brent Christian.
  - Darrell Pettis, County Administrator, called the meeting to order and called for nominations for the Chair of the 2016 Le Sueur County Board. On motion by Rohlfsing, seconded by Connolly and unanimously approved, nominations ceased and a unanimous ballot was cast for King as 2016 Board Chair. On motion by Rohlfsing, seconded by Connolly and unanimously approved, nominations ceased and a unanimous ballot was cast for Gliszinski as 2016 Board Vice Chairman.
  - The Board approved the agenda for the business of the day. (Connolly-Rohlfsing)
  - The Board approved the consent agenda: (Rohlfsing-Connolly)
  - Approved the December 22, 2016 County Board Minutes and Summary Minutes
  - The Board approved the year end cases and claims for Human Services: Financial: \$ 16,876.00 and Soc Serv: \$ 77,137.52 (Rohlfsing-Connolly)
  - The Board denied the waiver of penalty request by Dorothy Knish. (Rohlfsing-Connolly)
  - The Board delegated their authority to review the below listed claims before payment pursuant to M.S. 375.18, Subd 1b. to the Le Sueur County Auditor-Treasurer. Claims to be paid under the Statute by Auditor-Treasurers' approval include Bills that are discounted when paid in specific time period, Utilities/Telephone/Sewer & Water, Contract/Lease Payments, Employee's Credit Card Reimbursements, Class Registration/Reservations, Dues, Postage, Drug Investigation Money, Tax Settlements and Apportionments, License Fees, Taxes & Special Assessments, Bond Payments, Septic Loans. (Rohlfsing-Connolly)
  - The Board dedicated reserves in the following funds for cash flow up to 40% of the Total Budgeted Expenditures. (Connolly-Rohlfsing)
- The following is a list of the dedicated reserves for Le Sueur County for 2016:

Revenue Fund	5,178,197
Road & Bridge	7,231,125
Human Services	2,958,354
Environmental	384,418
Victim Witness	41,865
Solid Waste	1,633,425.34 (actual)
Bond Fund	858,482

- The Board designated the following financial institutions as depositories of funds for Le Sueur County in 2016 provided they furnish proper & sufficient collateral or surety bond, as needed for such deposits. (Rohlfsing-Connolly)

First National Bank	Le Center, MN.
First State Bank	Le Center, MN.
Frandsen Bank & Trust	Montgomery, MN.
First Farmers and Merchants Bank	Le Sueur, MN.
Cornerstone State Bank	Le Sueur, MN.
HomeTown Bank	Cleveland, MN.
Frandsen Bank & Trust	Waterville, MN.
Elysian Bank	Elysian, MN.
Wachovia Securities Inc.	Minneapolis, MN.
Magic Fund	Minneapolis, MN.
State Bank of New Prague	New Prague, MN.



- The Board approved the total amount of interest collected on investments during the year of 2015 as \$212,387.89. (Connolly-Rohlfing)
  - The Board approved to grant regular status to Tina Hering, full time Registered Nurse, in Public Health, effective December 23, 2015. (Connolly-Rohlfing)
  - The Board approved the recommendation to hire Kele Lukes, full time Jailer/Dispatcher in the Sheriff's Office as a Grade 6, Step 1 at \$17.07 per hour, effective December 28, 2015. (Rohlfing-Connolly)
  - On motion by Connolly, seconded by Rohlfing and unanimously approved, the Board approved to post for a full time Jailer-Dispatcher Corrections Sergeant in the Sheriff's Office as a Grade 9, Step 1 at \$20.84 per hour. (Connolly-Rohlfing)
  - The Board approved to hire George Phillips as a full time GIS Technician in the Land Records Department as a Grade 6, Step 1 at \$17.50 per hour, effective January 19, 2016. (Rohlfing-Connolly)
  - The Board approved to hire Kyle Steinke as a full time Highway Maintenance Worker in the Highway Department as a Grade 6, Step 1 at \$17.50 per hour, effective January 19, 2016. (Rohlfing-Connolly)
  - The Board approved to hire Amber Lazzari as a full time Agency Social Worker in Human Services as a Grade 10, Step 2 at \$22.90 per hour, effective February 1, 2016. (Connolly-Rohlfing)
  - The Board approved to post and request the merit list for a full time Lead Eligibility Worker in Human Services as a Grade 7, Step 1 at \$18.54 per hour. (Rohlfing-Connolly)
  - The Board tabled the recommendation to post and advertise for three full time Accounting/Licensing Clerks in the Auditor – Treasurers Office as a Grade 7, Step 1 at \$18.54 per hour. (Rohlfing-Connolly)
  - The Board approved to accept the retirement request from Denise Osterkamp, full time Administrative Assistant III in the Planning and Zoning Department, effective March 4, 2016. (Rohlfing-Connolly)
  - The Board approved to post and advertise for a full time Administrative Assistant III in the Planning and Zoning Department as a Grade 5, Step 1 at \$16.51 per hour. (Rohlfing-Connolly)
  - The Board approved the Clerical Abatements and Additions to the Annual Report from the Assessor's Office. (Connolly-Rohlfing)
  - The Board designated the Le Center Leader as the legal paper of the Le Sueur County Board for Financial Statements, Official Statements, Official Notices, Personal Property Lists and all legal notices required to be published in the Official Paper for the year 2016 and the Board designated the Le Sueur Herald as the second publication for the County Financial Statement for the year 2016, and accepted the legal bids for all other notices for other county newspapers, those being: The Elysian Enterprise, New Prague Times, and Montgomery Messenger. (Rohlfing-Connolly)
  - The Board approved the following 2016 Committee assignments: (Connolly-Rohlfing)
- Commissioner Gliszinski (1): AMC, NACO, Tri-County Solid Waste, Le Sueur-Waseca Board of Health, German – Jefferson Sewer District, Roads & Bridge, Guardian Ad Litem, Transportation Alliance, Fair Board, Planning & Zoning, Work Force Council, Labor Management, Insurance Review, Le Sueur – Rice Joint Drainage Authority, Le Sueur – Scott Joint Drainage Authority, AMC Public Safety Policy Committee, Union Negotiations, Personnel Policy Committee, Extension
- Commissioner Connolly (2): AMC, NACO, Tri-County Solid Waste, Le Sueur-Waseca Board of Health, German – Jefferson Sewer District, Roads & Bridges, Insurance, Deferred Compensation, Law Library, Le Sueur County Aging & Transit, MVAC/HRA, AMC General Government Policy Committee, Le Sueur – Rice Joint Drainage Authority, Le Sueur – Scott Joint Drainage Authority
- Commissioner King (3): AMC, NACO, Tri-County Solid Waste, Le Sueur-Waseca Board of Health, German – Jefferson Sewer District, Roads & Bridges, Airport Commission for Le Sueur, MSSA, Joint Powers, MCIT, Transportation Alliance, Safety Committee, Greater Blue Earth River Basin Alliance (GBERBA), Ney Foundation, Le Sueur – Waseca Regional Library, AMC Health & Human Services Policy Committee and Le Sueur – Scott Joint Drainage Authority, Le Sueur – Blue Earth Joint Drainage Authority, Regional Radio Board, Employee Reclassification Committee, Union Negotiations, Personnel Policy Committee, Extension, TH169 Coalition
- Commissioner Wetzel (4): AMC, NACO, Tri-County Solid Waste, Le Sueur-Waseca Board of Health, German – Jefferson Sewer District, Roads & Bridges, Le Sueur County Developmental Services (LCDS), EMS Joint Powers, MVCOG, Cannon River Watershed, Public Health Advisory Committee, Public

Health Emergency Preparedness Advisory, Family Services Collaborative, Regional Radio Board, AMC Transportation & Infrastructure Policy Committee, Le Sueur – Rice Joint Drainage Authority, Le Sueur – Blue Earth Joint Drainage Authority and Transportation Alliance, Employee Reclassification Committee Commissioner Rohlfsing (5): MVAC, AMC, NACO, Tri-County Solid Waste, Le Sueur-Waseca Board of Health, German – Jefferson Sewer District, Roads & Bridges, MCIT, Mental Health Advisory, Immtrack Joint Powers Board, Transportation Alliance, VIP, Scenic Byway Alliance, MN River Basins, Region 9, SBA, Le Sueur County Developmental Services (LCDS), Le Sueur – Waseca Regional Library, Mental Health Advisory, AMC Environment & Natural Resources Policy Committee, Historical Society, Le Sueur – Blue Earth Joint Drainage Authority, Airport Commission for Mankato, SHIP Community Leadership Team.

2016 Canvassing Board Members; Commissioners Rohlfsing, Wetzel and Connolly

- The Board approved the burial of Mary Sasse in the Sharon Township Cemetery and consented to the Sasse family moving forward with creating an association in an effort to take over the currently abandoned cemetery. (Connolly-Rohlfsing)

- The Board approved the final payment in the amount of \$36,536.63 on SAP 40-626-044 and SAP 40-628-029. (Connolly-Rohlfsing)

- The following final 2015 claims were approved for payment: (Connolly-Rohlfsing)

Warrant #	Vendor Name	Amount
38914	A'Viands	\$ 7,237.30
38923	Bolton & Menk Inc.	\$ 7,122.00
38928	Carquest of Le Center	\$ 2,613.50
38937	Department of Corrections STS	\$ 15,066.38
38944	Frattalone Companies Inc.	\$ 9,425.00
38947	Genesis	\$ 12,426.80
38958	Johnson Aggregates	\$ 2,380.68
38961	Kris Engineering Inc.	\$ 2,329.08
38967	Le Sueur Co. Sheriff's Dept.	\$ 4,948.20
38968	Le Sueur Co. Soil & Water Conser.Dist.	\$ 19,982.64
38972	Little Falls Machine Inc.	\$ 2,129.31
38995	River Valley Trucking & Const.	\$ 2,230.00
38998	Sanofi Pasteur Inc.	\$ 3,985.51
39001	S.E.H. Inc.	\$ 31,482.97
39002	Selly Excavating Inc.	\$108,400.50
39004	S.M.C. Co. Inc.	\$ 32,156.19
39005	Springsted Inc.	\$ 2,750.00
39013	Supreme Outdoor Advertising	\$ 3,400.00
39015	Technical Solutions of Madison Lake Inc.	\$ 2,753.30
39020	Traxler Construction Inc.	\$ 5,275.79
39033	Xerox Business Services LLC	\$ 5,594.06
101	Claims paid less than \$2,000.00:	\$ 42,518.05
21	Claims paid more than \$2,000.00:	\$283,689.21
122	Total all claims paid:	\$326,207.26

- The Board adjourned until Tuesday January 19, 2016 at 9:00 a.m. (Connolly-Rohlfsing)

ATTEST: Le Sueur County Administrator                      Le Sueur County Chairman

**LG220 Application for Exempt Permit**

An exempt permit may be issued to a nonprofit organization that:

- conducts lawful gambling on five or fewer days, and
- awards less than \$50,000 in prizes during a calendar year.

**Application fee for each event**

If application postmarked or received:

less than 30 days  
before the event**\$100**more than 30 days  
before the event**\$50****ORGANIZATION INFORMATION**

Check #

\$

Organization name

Previous gambling permit number

NWTF Valley Yelpers Chapter

X-33233-15-011

Type of nonprofit organization. Check one.

☐

Fraternal

☐

Religious

☐

Veterans

☒

Other nonprofit organization

Mailing address

City

State

Zip Code

County

30167 271<sup>st</sup> Ave Henderson MN 56044 LeSueur

Name of chief executive officer (CEO)

Daytime phone number

Email address

James Legg 507-665-6300

**Attach a copy of ONE of the following for proof of nonprofit status. Check one.**

Do not attach a sales tax exempt status or federal ID employer numbers as they are not proof of nonprofit status.

☐**Nonprofit Articles of Incorporation OR a current Certificate of Good Standing.**

Don't have a copy? This certificate must be obtained each year from:

Secretary of State, Business Services Div., 180 State Office Building, St. Paul, MN 55155 Phone: 651-296-2803

☐**IRS income tax exemption [501(c)] letter in your organization's name.**

Don't have a copy? To obtain a copy of your federal income tax exempt letter, have an organization officer contact the IRS at 877-829-5500.

☐**IRS - Affiliate of national, statewide, or international parent nonprofit organization (charter)**

If your organization falls under a parent organization, attach copies of both of the following:

- IRS letter showing your parent organization is a nonprofit 501(c) organization with a group ruling, and
- the charter or letter from your parent organization recognizing your organization as a subordinate.

☒**IRS - proof previously submitted to Gambling Control Board**

If you previously submitted proof of nonprofit status from the IRS, no attachment is required.

**GAMBLING PREMISES INFORMATION**

Name of premises where gambling activity will be conducted (for raffles, list the site where the drawing will take place)

Caribou Gun Club

Address (do not use PO box)

City

Zip Code

County

30649 380<sup>th</sup> St LeSueur 56058 LeSueur

Date(s) of activity (for raffles, indicate the date of the drawing)

March 10<sup>th</sup> 2016

Check the box or boxes that indicate the type of gambling activity your organization will conduct:

☐

Bingo\*

☒

Raffles

☐

Paddlewheels\*

☐

Pull-Tabs\*

☐

Tipboards\*

\* **Gambling equipment** for pull-tabs, bingo paper, tipboards, and paddlewheels must be obtained from a distributor licensed by the Gambling Control Board. EXCEPTION: Bingo hard cards and bingo number selection devices may be borrowed from another organization authorized to conduct bingo.

To find a licensed distributor, go to [www.gcb.state.mn.us](http://www.gcb.state.mn.us) and click on List of Licensed Distributors, or call 651-639-4000.

Also complete  
Page 2 of this form.

Print Form

Reset Form

**LOCAL UNIT OF GOVERNMENT ACKNOWLEDGMENT**

If the gambling premises is within city limits, a city official must check the action that the city is taking on this application and sign the application.

- ☐ The application is acknowledged with no waiting period.  
☐ The application is acknowledged with a 30 day waiting period, and allows the Board to issue a permit after 30 days (60 days for a 1st class city).  
☐ The application is denied.

Print city name \_\_\_\_\_  
 On behalf of the city, I acknowledge this application.

Signature of city official receiving application

Title \_\_\_\_\_ Date \_\_\_\_/\_\_\_\_/\_\_\_\_

If the gambling premises is located in a township, a county official must check the action that the county is taking on this application and sign the application.

**A township official is not required to sign the application.**

- ☐ The application is acknowledged with no waiting period.  
☐ The application is acknowledged with a 30 day waiting period, and allows the Board to issue a permit after 30 days.  
☐ The application is denied.

Print county name \_\_\_\_\_  
 On behalf of the county, I acknowledge this application.  
 Signature of county official receiving application

Title \_\_\_\_\_ Date \_\_\_\_/\_\_\_\_/\_\_\_\_

**(Optional) TOWNSHIP:** On behalf of the township, I acknowledge that the organization is applying for exempted gambling activity within township limits. [A township has no statutory authority to approve or deny an application [Minnesota Statute 349.166]]

Print township name \_\_\_\_\_

Signature of township official acknowledging application

Title \_\_\_\_\_ Date \_\_\_\_/\_\_\_\_/\_\_\_\_

**CHIEF EXECUTIVE OFFICER'S SIGNATURE**

The information provided in this application is complete and accurate to the best of my knowledge. I acknowledge that the financial report will be completed and returned to the Board within 30 days of the date of our gambling activity.

Chief executive officer's signature \_\_\_\_\_ Date 1-6-16

**Complete a separate application for each gambling activity:**

- one day of gambling activity
- two or more consecutive days of gambling activity,
- each day a raffle drawing is held

**Send application with:**

- a copy of your proof of nonprofit status, and
  - application fee for each event.
- Make check payable to "State of Minnesota."

To: Gambling Control Board  
 1711 West County Road B, Suite 300 South  
 Roseville, MN 55113

**Financial report and recordkeeping required**

A financial report form and instructions will be sent with your permit, or use the online fill-in form available at [www.gcb.state.mn.us](http://www.gcb.state.mn.us). Within 30 days of the activity date, complete and return the financial report form to the Gambling Control Board.

Print Form

Reset Form

This form will be made available in alternative format (i.e. large print, Braille) upon request.  
**Data privacy notice:** The information requested on this form (and any attachments) will be used by the Gambling Control Board (Board) to determine your organization's qualifications to be involved in lawful gambling activities in Minnesota. Your organization has the right to refuse to supply the information requested; however, if your organization refuses to supply this information, the Board may not be able to determine your organization's qualifications and, as a consequence, may refuse to issue a permit. If you supply the information requested,

the Board will be able to process your organization's application. Your organization's name and address will be public information when received by the Board. All other information provided will be private data until the Board issues the permit. When the Board issues the permit, all information provided will become public. If the Board does not issue a permit, all information provided remains private, with the exception of your organization's name and address which will remain public. Private data are available to: Board members, Board staff whose work requires access to the

information; Minnesota's Department of Public Safety; Attorney General; Commissioners of Administration, Minnesota Management & Budget, and Revenue; Legislative Auditor, national and international gambling regulatory agencies; anyone pursuant to court order; other individuals and agencies specifically authorized by state or federal law to have access to the information; individuals and agencies for which law or legal order authorizes a new use or sharing of information after this Notice was given; and anyone with your written consent.

## REPAIR REQUEST

We, the undersigned landowners, do hereby request the Le Sueur County Board of Commissioners to clean out and repair Le Sueur County Ditch # ~~22~~ Spvr B located in Sec 9 Montgomery township.

Signed

Ronald Krozak

Address/Phone #

37602 Thomas LN

Montgomery mn

cell 507 720 3039

Date: 1-6-2016

Description of problem: ditch needs to be

cleaned - washed in from heavy rains

Needs repair.  
Roger Ruland  
1-6-16

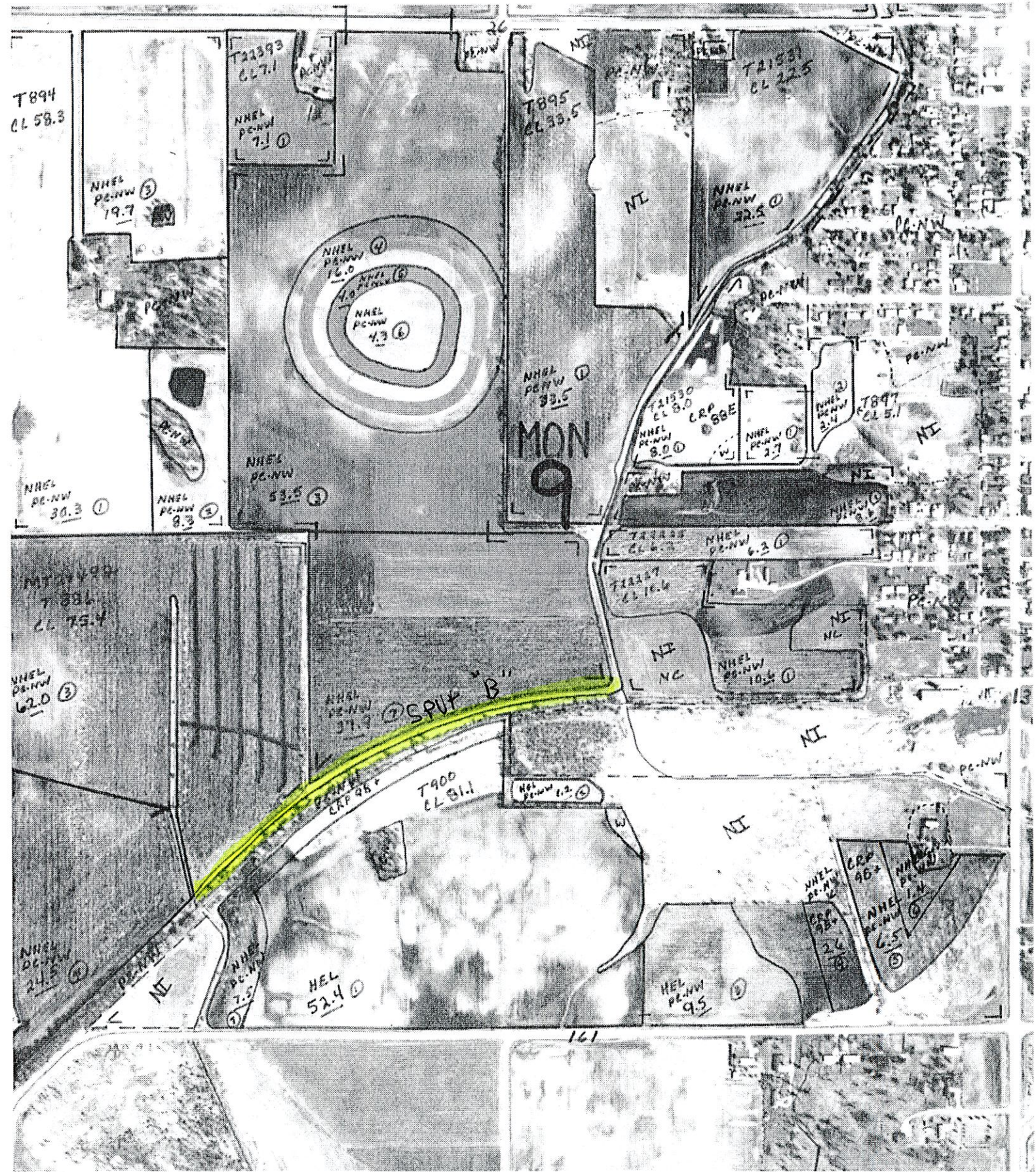


T=Tract Number W=Wetland FW=Farmed Wetland NW=Non-Wetland	MT=Multiple Tract Number CW=Converted Wetland NA=Non-Agricultural AW=Artificial Wetland	HEL=Highly Erodible Land NHLE=Non-Highly Erodible PC=Prior Converted Wetland ECW=Exempt (Commenced) CW	MW=Minimal Effect Wetland (Exempt) MWC, MWM, MWR=Special Cond(See SCS) NC=Non-cropland NI=Non-inventoried
COUNTY	NOT TO	REPRODUCED	CROP
LE SUEUR	SCALE	1999	YEAR 2000

PHOTO NO

H5-L

WARNING: Contact NRCS before draining, dredging, filling, or leveling any wet areas or wetland coded fields or improving, modifying or maintaining an existing drainage system







TOWNSHIP: I I N.

