

City of Scottsbluff, Nebraska

Monday, April 20, 2015

Regular Meeting

Item Consent3

Approve the Bid Specifications for Paving District 312 and authorize the city clerk to advertise for bids to be received by May 12, 2015, 2:00 p.m.

Staff Contact: Mark Bohl, Public Works Director

**Advertisement for Bids
Paving District 312 – 12th Avenue & Winter Creek Drive**

Owner: City of Scottsbluff
Address: 2525 Circle Drive, Scottsbluff, NE 69361

Sealed Bids for Paving District 312 – 12th Avenue & Winter Creek Drive for the City of Scottsbluff, will be received by Cindy Dickinson, City Clerk at City Hall, 2525 Circle Drive, Scottsbluff, Nebraska until 2:00 P.M., (Local Time) May 12th, 2015, and then at said office publicly opened and read aloud.

The Contract Documents may be examined at the following locations:
City of Scottsbluff
2525 Circle Drive
Scottsbluff, NE 69361

M.C. Schaff & Associates
818 South Beltline Highway East
Scottsbluff, NE 69361

Copies of the Contract Documents may be obtained at the office of M.C. Schaff & Associates located at 818 South Beltline Highway East, Scottsbluff, NE 69361 upon payment of \$25.00 for each set, none of which will be refunded.

/s/ Cindy Dickinson
City Clerk

Publish three times:
04/24/2015, 05/01/2015, 05/08/2015



HUB-Zone certified firm

SPECIFICATIONS

**Paving District 312
12th Avenue &
Winter Creek Drive
Scottsbluff, NE**

**City of Scottsbluff
Scottsbluff, Nebraska**

PREPARED FOR
City of Scottsbluff
2525 Circle Drive
Scottsbluff, NE 69361

PREPARED BY
MC Schaff & Associates, Inc.
818 S Beltline Highway E
Scottsbluff, NE 69361
(308) 635-1926

PROJECT
RP140169-00

April, 2015



Advertisement for Bids
Paving District 312 – 12th Avenue & Winter Creek Drive

Owner: City of Scottsbluff
Address: 2525 Circle Drive, Scottsbluff, NE 69361

Sealed Bids for Paving District 312 – 12th Avenue & Winter Creek Drive for the City of Scottsbluff, will be received by Cindy Dickinson, City Clerk at City Hall, 2525 Circle Drive, Scottsbluff, Nebraska until 2:00 P.M., (Local Time) May 12th, 2015, and then at said office publicly opened and read aloud.

The Contract Documents may be examined at the following locations:

City of Scottsbluff
2525 Circle Drive
Scottsbluff, NE 69361

M.C. Schaff & Associates
818 South Beltline Highway East
Scottsbluff, NE 69361

Copies of the Contract Documents may be obtained at the office of M.C. Schaff & Associates located at 818 South Beltline Highway East, Scottsbluff, NE 69361 upon payment of \$25.00 for each set, none of which will be refunded.

/s/ Cindy Dickinson
City Clerk

Publish three times:
04/24/2015, 05/01/2015, 05/08/2015

BID FORM FOR CONSTRUCTION CONTRACTS

Prepared by

ENGINEERS JOINT CONTRACT DOCUMENTS COMMITTEE

and

Issued and Published Jointly by



AMERICAN COUNCIL OF ENGINEERING COMPANIES

ASSOCIATED GENERAL CONTRACTORS OF AMERICA

AMERICAN SOCIETY OF CIVIL ENGINEERS

PROFESSIONAL ENGINEERS IN PRIVATE PRACTICE
A Practice Division of the
NATIONAL SOCIETY OF PROFESSIONAL ENGINEERS

Endorsed by



CONSTRUCTION SPECIFICATIONS INSTITUTE

EJCDC C-410 Bid Form for Construction Contracts
Copyright © 2007 National Society of Professional Engineers for EJCDC. All rights reserved.

BID FORM

Paving District 312 – 12th Avenue & Winter Creek Drive
Scottsbluff, Nebraska

TABLE OF CONTENTS

	Page
Article 1 – Bid Recipient.....	1
Article 2 – Bidder’s Acknowledgements.....	1
Article 3 – Bidder’s Representations	1
Article 4 – Bidder’s Certification.....	2
Article 5 – Basis of Bid	3
Article 6 – Time of Completion	5
Article 7 – Attachments to this Bid.....	6
Article 8 – Defined Terms.....	6
Article 9 – Bid Submittal.....	6

ARTICLE 1 – BID RECIPIENT

1.01 This Bid is submitted to:

City of Scottsbluff
2525 Circle Drive
Scottsbluff, NE 69361

1.02 The undersigned Bidder proposes and agrees, if this Bid is accepted, to enter into an Agreement with Owner in the form included in the Bidding Documents to perform all Work as specified or indicated in the Bidding Documents for the prices and within the times indicated in this Bid and in accordance with the other terms and conditions of the Bidding Documents.

ARTICLE 2 – BIDDER’S ACKNOWLEDGEMENTS

2.01 Bidder accepts all of the terms and conditions of the Instructions to Bidders, including without limitation those dealing with the disposition of Bid security. This Bid will remain subject to acceptance for 60 days after the Bid opening, or for such longer period of time that Bidder may agree to in writing upon request of Owner.

ARTICLE 3 – BIDDER’S REPRESENTATIONS

3.01 In submitting this Bid, Bidder represents that:

A. Bidder has examined and carefully studied the Bidding Documents, other related data identified in the Bidding Documents, and the following Addenda, receipt of which is hereby acknowledged:

<u>Addendum No.</u>	<u>Addendum Date</u>
_____	_____
_____	_____
_____	_____

- B. Bidder has visited the Site and become familiar with and is satisfied as to the general, local, and Site conditions that may affect cost, progress, and performance of the Work.
- C. Bidder is familiar with and is satisfied as to all Laws and Regulations that may affect cost, progress, and performance of the Work.
- D. Bidder has carefully studied all: (1) reports of explorations and tests of subsurface conditions at or contiguous to the Site and all drawings of physical conditions relating to existing surface or subsurface structures at the Site (except Underground Facilities) that have been identified in SC-4.02 as containing reliable "technical data," and (2) reports and drawings of Hazardous Environmental Conditions, if any, at the Site that have been identified in SC-4.06 as containing reliable "technical data."
- E. Bidder has considered the information known to Bidder; information commonly known to contractors doing business in the locality of the Site; information and observations obtained

from visits to the Site; the Bidding Documents; and the Site-related reports and drawings identified in the Bidding Documents, with respect to the effect of such information, observations, and documents on (1) the cost, progress, and performance of the Work; (2) the means, methods, techniques, sequences, and procedures of construction to be employed by Bidder, including applying the specific means, methods, techniques, sequences, and procedures of construction expressly required by the Bidding Documents; and (3) Bidder's safety precautions and programs.

- F. Based on the information and observations referred to in Paragraph 3.01.E above, Bidder does not consider that further examinations, investigations, explorations, tests, studies, or data are necessary for the determination of this Bid for performance of the Work at the price(s) bid and within the times required, and in accordance with the other terms and conditions of the Bidding Documents.
- G. Bidder is aware of the general nature of work to be performed by Owner and others at the Site that relates to the Work as indicated in the Bidding Documents.
- H. Bidder has given Engineer written notice of all conflicts, errors, ambiguities, or discrepancies that Bidder has discovered in the Bidding Documents, and the written resolution thereof by Engineer is acceptable to Bidder.
- 1. The Bidding Documents are generally sufficient to indicate and convey understanding of all terms and conditions for the performance of the Work for which this Bid is submitted.

ARTICLE 4 – BIDDER'S CERTIFICATION

4.01 Bidder certifies that:

- A. This Bid is genuine and not made in the interest of or on behalf of any undisclosed individual or entity and is not submitted in conformity with any collusive agreement or rules of any group, association, organization, or corporation;
- B. Bidder has not directly or indirectly induced or solicited any other Bidder to submit a false or sham Bid;
- C. Bidder has not solicited or induced any individual or entity to refrain from bidding; and
- D. Bidder has not engaged in corrupt, fraudulent, collusive, or coercive practices in competing for the Contract. For the purposes of this Paragraph 4.01.D:
 - 1. "corrupt practice" means the offering, giving, receiving, or soliciting of anything of value likely to influence the action of a public official in the bidding process;
 - 2. "fraudulent practice" means an intentional misrepresentation of facts made (a) to influence the bidding process to the detriment of Owner, (b) to establish bid prices at artificial non-competitive levels, or (c) to deprive Owner of the benefits of free and open competition;

3. "collusive practice" means a scheme or arrangement between two or more Bidders, with or without the knowledge of Owner, a purpose of which is to establish bid prices at artificial, non-competitive levels; and
4. "coercive practice" means harming or threatening to harm, directly or indirectly, persons or their property to influence their participation in the bidding process or affect the execution of the Contract.

ARTICLE 5 – BASIS OF BID

Bidder will complete the Work in accordance with the Contract Documents for the following price(s):

Paving District 312 - 12th Ave. & Winter Creek Dr.

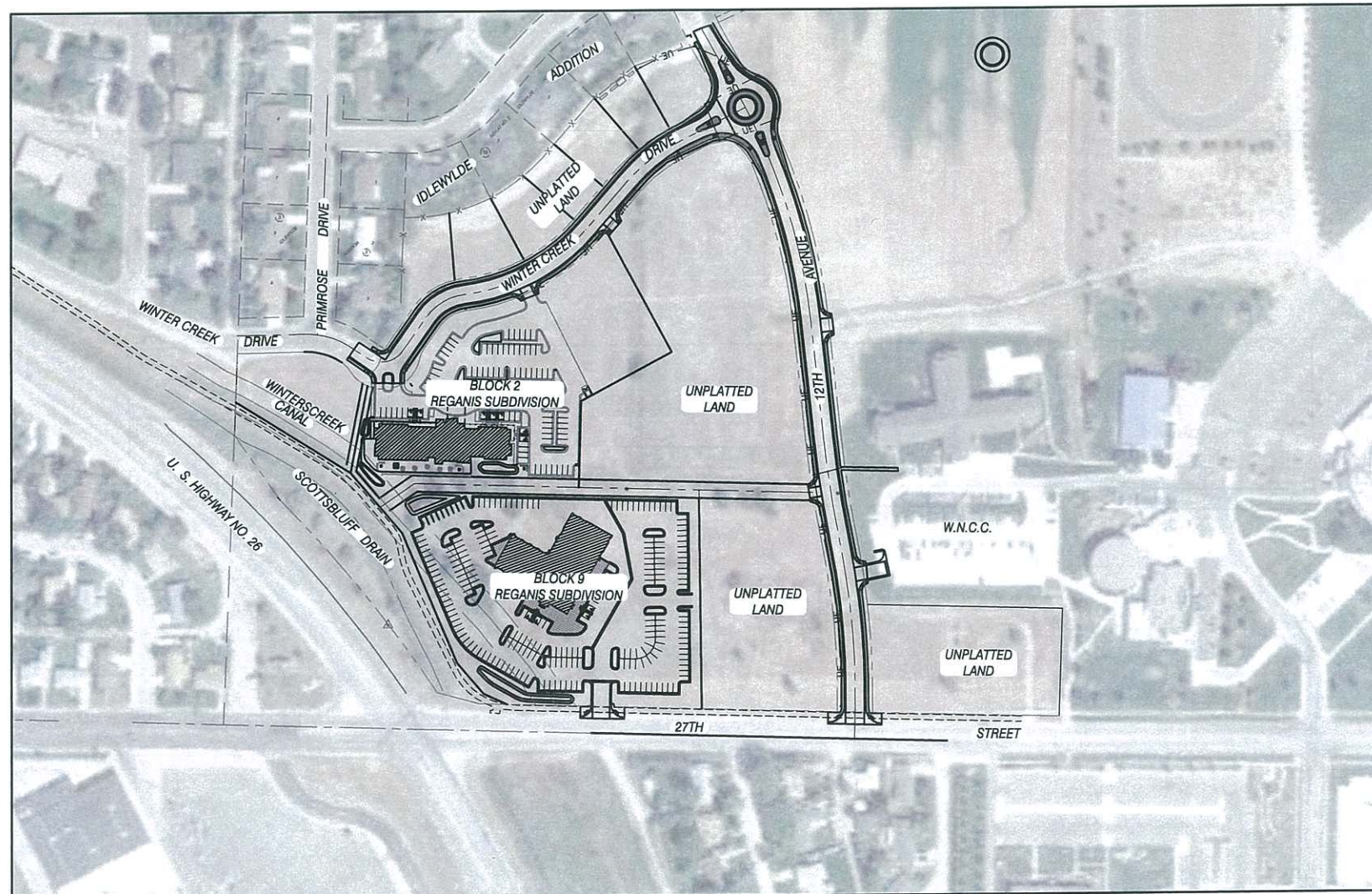
Item	Description	Estimated Quantity	Unit	Unit Price	Total Estimated Price
1	Mobilization	1	LS	\$	\$
2	Traffic Control	1	LS	\$	\$
3	Clearing & Grubbing	1	LS	\$	\$
4	Remove Existing Pavement, Curb, Gutter, Etc	3500	SF	\$	\$
5	Remove Storm Drain Pipe	102	LF	\$	\$
6	Plug Existing Storm Drain Pipe	1	EA	\$	\$
7	Remove Existing Barrier Rail/Barricade	5	EA	\$	\$
8	Excavation (Established Quantity)	7500	CY	\$	\$
9	Standard Storm Drain Curb Inlet	12	EA	\$	\$
10	18-Inch RCCP Storm Drain Pipe	1350	LF	\$	\$
11	48-Inch Storm Drain Manhole	3	EA	\$	\$
12	18-Inch Flared End Section	1	EA	\$	\$
13	Connect to Existing Inlet	1	EA	\$	\$
14	Remove & Salvage Existing Fire Hydrant & Aux Valve - Plug Tee	2	EA	\$	\$
15	Remove 8-Inch Valve	1	EA	\$	\$

16	8-inch by 6-Inch Reducer	1	EA	\$	\$
17	Reinstall Fire Hydrant w/Aux. Valve including 6-inch PVC Water Main	2	EA	\$	\$
18	Connect to Existing Valve	1	EA	\$	\$
19	8-Inch x 8-Inch Tee	1	EA	\$	\$
20	8-Inch Plug	2	EA	\$	\$
21	8-Inch PVC Water Main	60	LF	\$	\$
22	8-Inch by 6-Inch Tee	1	EA	\$	\$
23	1 1/4-Inch Schedule 40 PVC	2200	LF	\$	\$
24	2-Inch Schedule 40 PVC	320	LF	\$	\$
25	3-Inch Schedule 40 PVC	15	LF	\$	\$
26	Street Light Pedestal	15	EA	\$	\$
27	Secondary Pedestal	1	EA	\$	\$
28	8-Inch P.C. Concrete Pavement	9500	SY	\$	\$
29	30-Inch P.C. Concrete Curb & Gutter (Catch)	4500	LF	\$	\$
30	30-Inch P.C. Concrete Curb & Gutter (Spill)	500	LF	\$	\$
31	30-inch P.C. Concrete Truck Apron Curb	200	LF	\$	\$
32	4-Inch P.C. Concrete Sidewalk	23000	SF	\$	\$
33	Handicap Ramp	27	EA	\$	\$
34	15-Foot Intersection Radius	1	EA	\$	\$
35	20-Foot Intersection Radius	11	EA	\$	\$
36	30-Foot Intersection Radius	2	EA	\$	\$
37	4-Foot P.C. Concrete Valley Gutter	26	LF	\$	\$
38	8-Inch P.C. Stamped & Colored Concrete	4600	SF	\$	\$
39	Adjust Curb Stop/Meter Pit to Grade	9	EA	\$	\$

Cost Estimate

Paving District 312 - 12th Ave. & Winter Creek Dr.					
No.	Description	Unit	Quantity	Unit Cost	Total
1	Mobilization	LS	1	\$ 50,000.00	\$ 50,000.00
2	Traffic Control	LS	1	\$ 5,000.00	\$ 5,000.00
3	Clearing & Grubbing	LS	1	\$ 5,000.00	\$ 5,000.00
4	Remove Existing Pavement, Curb, Gutter, Etc	SF	3500	\$ 1.00	\$ 3,500.00
5	Remove Storm Drain Pipe	LF	102	\$ 5.00	\$ 510.00
6	Plug Existing Storm Drain Pipe	EA	1	\$ 200.00	\$ 200.00
7	Remove Existing Barrier Rail/Barricade	EA	5	\$ 50.00	\$ 250.00
8	Excavation (Established Quantity)	CY	7500	\$ 10.00	\$ 75,000.00
9	Standard Storm Drain Curb Inlet	EA	12	\$ 1,800.00	\$ 21,600.00
10	18-Inch RCCP Storm Drain Pipe	LF	1350	\$ 50.00	\$ 67,500.00
11	48-Inch Storm Drain Manhole	EA	3	\$ 3,000.00	\$ 9,000.00
12	18-Inch Flared End Section	EA	1	\$ 1,500.00	\$ 1,500.00
13	Connect to Existing Inlet	EA	1	\$ 500.00	\$ 500.00
14	Remove & Salvage Existing Fire Hydrant & Aux Valve - Plug Tee	EA	2	\$ 500.00	\$ 1,000.00
15	Remove 8-Inch Valve	EA	1	\$ 200.00	\$ 200.00
16	8-inch by 6-Inch Reducer	EA	1	\$ 150.00	\$ 150.00
17	Relocated Fire Hydrant w/Aux. Valve including 6-inch PVC Water Main	EA	2	\$ 1,200.00	\$ 2,400.00
18	Connect to Existing Valve	EA	1	\$ 500.00	\$ 500.00
19	8-Inch x 8-Inch Tee	EA	1	\$ 150.00	\$ 150.00
20	8-Inch Plug	EA	2	\$ 150.00	\$ 300.00
21	8-Inch PVC Water Main	LF	60	\$ 50.00	\$ 3,000.00
22	8-Inch by 6-Inch Tee	EA	1	\$ 150.00	\$ 150.00
23	1 1/4-Inch Schedule 40 PVC	LF	2200	\$ 5.00	\$ 11,000.00
24	2-Inch Schedule 40 PVC	LF	320	\$ 10.00	\$ 3,200.00
25	3-Inch Schedule 40 PVC	LF	15	\$ 20.00	\$ 300.00
26	Street Light Pedestal	EA	15	\$ 150.00	\$ 2,250.00
27	Secondary Pedestal	EA	1	\$ 150.00	\$ 150.00
28	8-Inch P.C. Concrete Pavement	SY	9500	\$ 45.00	\$ 427,500.00
29	30-Inch P.C. Concrete Curb & Gutter (Catch)	LF	4500	\$ 18.00	\$ 81,000.00
30	30-Inch P.C. Concrete Curb & Gutter (Spill)	LF	500	\$ 18.00	\$ 9,000.00
31	30-inch P.C. Concrete Truck Apron Curb	LF	200	\$ 25.00	\$ 5,000.00
32	4-Inch P.C. Concrete Sidewalk	SF	23000	\$ 5.00	\$ 115,000.00
33	Handicap Ramp	EA	27	\$ 750.00	\$ 20,250.00
34	15-Foot Intersection Radius	EA	1	\$ 1,500.00	\$ 1,500.00
35	20-Foot Intersection Radius	EA	11	\$ 2,000.00	\$ 22,000.00
36	30-Foot Intersection Radius	EA	2	\$ 2,500.00	\$ 5,000.00
37	4-Foot P.C. Concrete Valley Gutter	LF	26	\$ 40.00	\$ 1,040.00
38	8-Inch P.C. Stamped & Colored Concrete	SF	4600	\$ 12.00	\$ 55,200.00
39	Adjust Curb Stop/Meter Pit to Grade	EA	9	\$ 100.00	\$ 900.00
40	Adjust Manhole to Grade	EA	2	\$ 400.00	\$ 800.00
41	Adjust Water Valve to Grade	EA	5	\$ 200.00	\$ 1,000.00
42	4-Inch Yellow Wet Reflective Preformed Pavement Marking	LF	2900	\$ 4.00	\$ 11,600.00
43	6-Inch White Wet Reflective Preformed Pavement Marking	LF	100	\$ 6.00	\$ 600.00
44	12-Inch Yellow Preformed Pavement Marking	LF	50	\$ 12.00	\$ 600.00
45	12-Inch White Preformed Pavement Marking	LF	50	\$ 12.00	\$ 600.00
46	24-Inch White Preformed Pavement Marking	LF	260	\$ 25.00	\$ 6,500.00
47	White Left Turn Arrow Wet Reflective Preformed Pavement Marking	EA	2	\$ 500.00	\$ 1,000.00
48	Mulching & Seeding	ACRE	1	\$ 2,500.00	\$ 2,500.00
Total Items 1-48					\$ 1,032,900.00

CITY OF SCOTTSBLUFF PAVING DISTRICT 312 12TH AVENUE AND WINTER CREEK DRIVE CONSTRUCTION PLANS



SHEET INDEX

DRAWING	SHEET	DRAWING
G-1	1	COVER SHEET
2T	2	TYPICAL SECTIONS
LEG-1	3	LEGEND
2S	4	SUMMARY OF QUANTITIES
I-1	5	INDEX SHEET
RMV 1-4	6-9	REMOVAL SHEETS
SD 1-4	10-13	STORM DRAIN PLANS
W 1-2	14-15	WATER MAIN PLANS
E 1-3	16-18	ELECTRICAL CONDUIT PLANS
PP 1-5	19-23	PLAN & PROFILE SHEETS
INT-1	24	INTERSECTION DETAIL
MRK 1-3	25-27	PAVEMENT MARKINGS SHEETS
DTL 1-5	28-32	DETAIL SHEETS

M. C. SCHAFF AND ASSOCIATES, INC.
818 SOUTH BELTLINE HIGHWAY EAST
SCOTTSBLUFF, NEBRASKA 69361

ENGINEERS ♦ PLANNERS ♦ DESIGNERS ♦ LAND SURVEYORS
PH: 308-635-1926 FAX: 308-635-7807 INTERNET: WWW.MCSCHAFF.COM




ITEM	DESCRIPTION	QUANTITIES ESTIMATED QUANTITY
1.	MOBILIZATION	1 LUMP SUM
2.	TRAFFIC CONTROL & SAFETY	1 LUMP SUM
3.	CLEARING AND GRUBBING	1 LUMP SUM
4.	REMOVE EXISTING PAVEMENT, CURB, GUTTER, AND SIDEWALKS	3,500 S.F.
5.	REMOVE STORM DRAIN PIPE	102 L.F.
6.	PLUG EXISTING STORM DRAIN PIPE	1 EA.
7.	REMOVE EXISTING BARRIER RAIL/BARRICADE	5 EA.
8.	EXCAVATION (ESTABLISHED QUANTITY)	7,500 C.Y.
9.	STANDARD STORM DRAIN CURB INLET	12 EA.
10.	18-INCH RCCP STORM DRAIN PIPE	1,350 L.F.
11.	48-INCH STORM DRAIN MANHOLE	3 EA.
12.	18-INCH CONCRETE FLARED END SECTION	1 EA.
13.	CONNECT TO EXISTING INLET	1 EA.
14.	REMOVE AND SALVAGE EXISTING FIRE HYDRANT & AUX VALVE - PLUG TEE	2 EA.
15.	REMOVE 8-INCH VALVE	1 EA.
16.	8-INCH X 6-INCH VALVE	1 EA.
17.	REINSTALL FIRE HYDRANT W/AUX VALVE INCLUDING 6-INCH PVC WATER MAIN	2 EA.
18.	CONNECT TO EXISTING VALVE	1 EA.
19.	8-INCH X 8-INCH TEE	1 EA.
20.	8-INCH PLUG	2 EA.
21.	8-INCH PVC WATER MAIN	60 L.F.
22.	8-INCH X 6-INCH TEE	1 EA.

ITEM	DESCRIPTION	QUANTITIES ESTIMATED QUANTITY
23.	1 1/2-INCH SCHEDULE 40 PVC	2,200 L.F.
24.	2-INCH SCHEDULE 40 PVC	320 L.F.
25.	3-INCH SCHEDULE 40 PVC	15 L.F.
26.	STREET LIGHT PEDESTAL	15 EA.
27.	SECONDARY PEDESTAL	1 EA.

ITEM	DESCRIPTION	QUANTITIES ESTIMATED QUANTITY
28.	8-INCH P.C. CONCRETE PAVEMENT	9,500 S.Y.
29.	30-INCH P.C. CONCRETE CURB AND GUTTER (CATCH)	4,500 L.F.
30.	30-INCH P.C. CONCRETE CURB AND GUTTER (SPILL)	500 L.F.
31.	30-INCH P.C. CONCRETE TRUCK APRON CURB	200 L.F.
32.	4-INCH P.C. CONCRETE SIDEWALK	23,000 S.F.
33.	HANDICAP RAMP	27 EA.
34.	15-FOOT P.C. CONCRETE INTERSECTION RADIUS	1 EA.
35.	20-FOOT P.C. CONCRETE INTERSECTION RADIUS	11 EA.
36.	30-FOOT P.C. CONCRETE INTERSECTION RADIUS	2 EA.
37.	4-FOOT P.C. CONCRETE VALLEY GUTTER	26 L.F.
38.	8-INCH P.C. STAMPED & COLORED CONCRETE	4,600 S.F.
39.	ADJUST EXISTING CURB STOP/METER PIT TO GRADE	9 EA.
40.	ADJUST EXISTING MANHOLE TO GRADE	2 EA.
41.	ADJUST WATER VALVE TO GRADE	5 EA.
42.	4-INCH WET REFLECTIVE PREFORMED PAVEMENT MARKING (YELLOW)	2,900 L.F.
43.	6-INCH WET REFLECTIVE PREFORMED PAVEMENT MARKING (WHITE)	100 L.F.
44.	12-INCH PREFORMED PAVEMENT MARKING (YELLOW)	50 L.F.
45.	12-INCH PREFORMED PAVEMENT MARKING (WHITE)	50 L.F.
46.	24-INCH PREFORMED PAVEMENT MARKING (WHITE)	260 L.F.
47.	TURN ARROW, PREFORMED PAVEMENT MARKING (WHITE)	2 EA.
48.	MULCHING & SEEDING	1 ACRE

M. C. SCHAFF & ASSOCIATES, INC.
818 SOUTH BELTLINE HIGHWAY EAST
SCOTTSSBLUFF, NEBRASKA 69361



ENGINEERS ♦ PLANNERS ♦ DESIGNERS ♦ LAND SURVEYORS
 PH: 308-635-1928 FAX: 308-635-7807 INTERNET: WWW.MCSCHAFF.COM

PROJECT: PAVING DISTRICT 312
12TH AVENUE & WINTER CREEK DRIVE
SUMMARY OF QUANTITIES

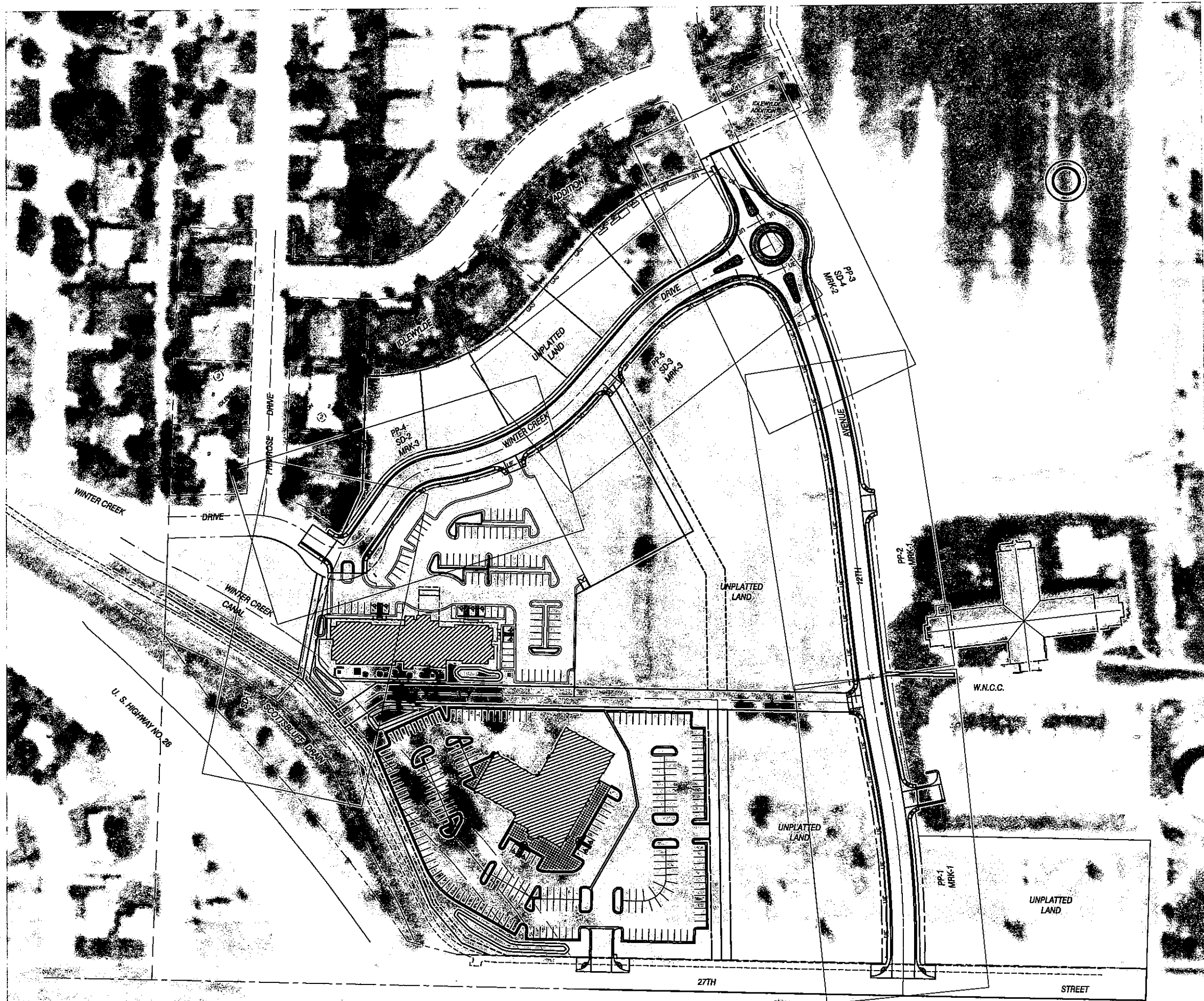
CLIENT: CITY OF SCOTTSSBLUFF

PROJECT NUMBER:
 RM 140169-00
 PROJECT DATE:
 04-15-15
 PROJECT MGR:
 D.J.D.
 PROJECT TEAM:
 A.V./D.B./G.S.

SEAL

DATE	REVISION

SHEET 4 OF 32
25



M. C. SCHAFF & ASSOCIATES, INC.
818 SOUTH BELTLINE HIGHWAY EAST
SCOTTSBUFF, NEBRASKA 69361

ENGINEERS ♦ PLANNERS ♦ DESIGNERS ♦ LAND SURVEYORS
 PH: 308-635-1926 FAX: 308-635-7807 INTERNET: WWW.MCSCHAFF.COM

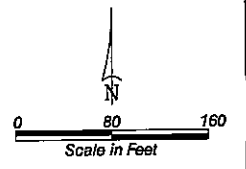
PROJECT: PAVING DISTRICT 312
12TH AVENUE &
WINTER CREEK DRIVE
INDEX SHEET

CLIENT: CITY OF SCOTTSBUFF

PROJECT NUMBER:
 RM140169-00
PROJECT DATE:
 04-15-15
PROJECT MGR:
 D.J.D.
PROJECT TEAM:
 A.V./D.B./G.S.

SEAL

DATE	REVISION



CALL BEFORE YOU DIG
 DIGGER'S HOTLINE
 811 or
 1-800-331-5666
 WWW.NE-DIGGERS.COM
 CALL 2 BUSINESS DAYS
 PRIOR TO ALL WORK

SHEET 5 OF 32
1-1