

# **City of Scottsbluff, Nebraska**

**Monday, November 3, 2014**

**Regular Meeting**

## **Item Resolut.4**

**Council to consider Final Plat of Lots A1 through J-8, Blocks 1 and 2, and Blocks 3 and 4, Columbarium Addition to Fairview Cemetery and approve the Resolution.**

**Staff Contact: Annie Folck, City Planner**

RESOLUTION NO. \_\_\_\_\_

BE IT RESOLVED BY THE MAYOR AND CITY COUNCIL OF THE  
CITY OF SCOTTSBLUFF, NEBRASKA:

That the final plat of Lots A-1 through J-8, Blocks 1& 2, and  
Blocks 3 & 4, Columbarium Addition to Fairview Cemetery, a replat of  
vacated Lots 1 through 8, Block 263, and Lots 1 through 8, Block 264,  
Replat No. Three of Section F, replat of Replat No. Two of Section E and  
F, and part of Section D, all part of Third Addition to Fairview Cemetery  
an addition to the City of Scottsbluff, Scotts Bluff County, Nebraska  
situated in the NW ¼ of Section 13, T22N, R55W of the 6th P.M., Scotts  
Bluff County, Nebraska dated October 8, 2014, duly made, acknowledged  
and certified, is approved. Such Plat is ordered filed and recorded in the  
office of the Register of Deeds, Scotts Bluff County, Nebraska.

Passed and approved this 13th day of October 2014.

\_\_\_\_\_  
Mayor

Attest:

\_\_\_\_\_  
City Clerk

SEAL

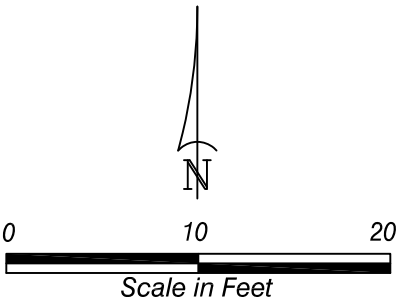
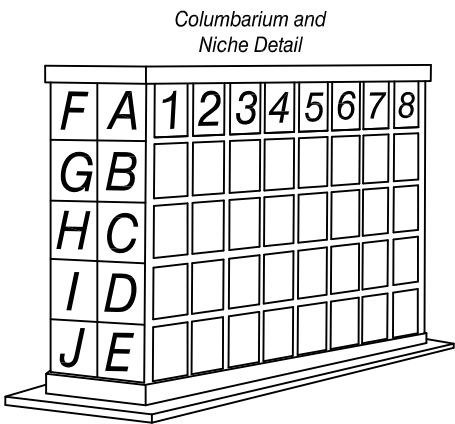
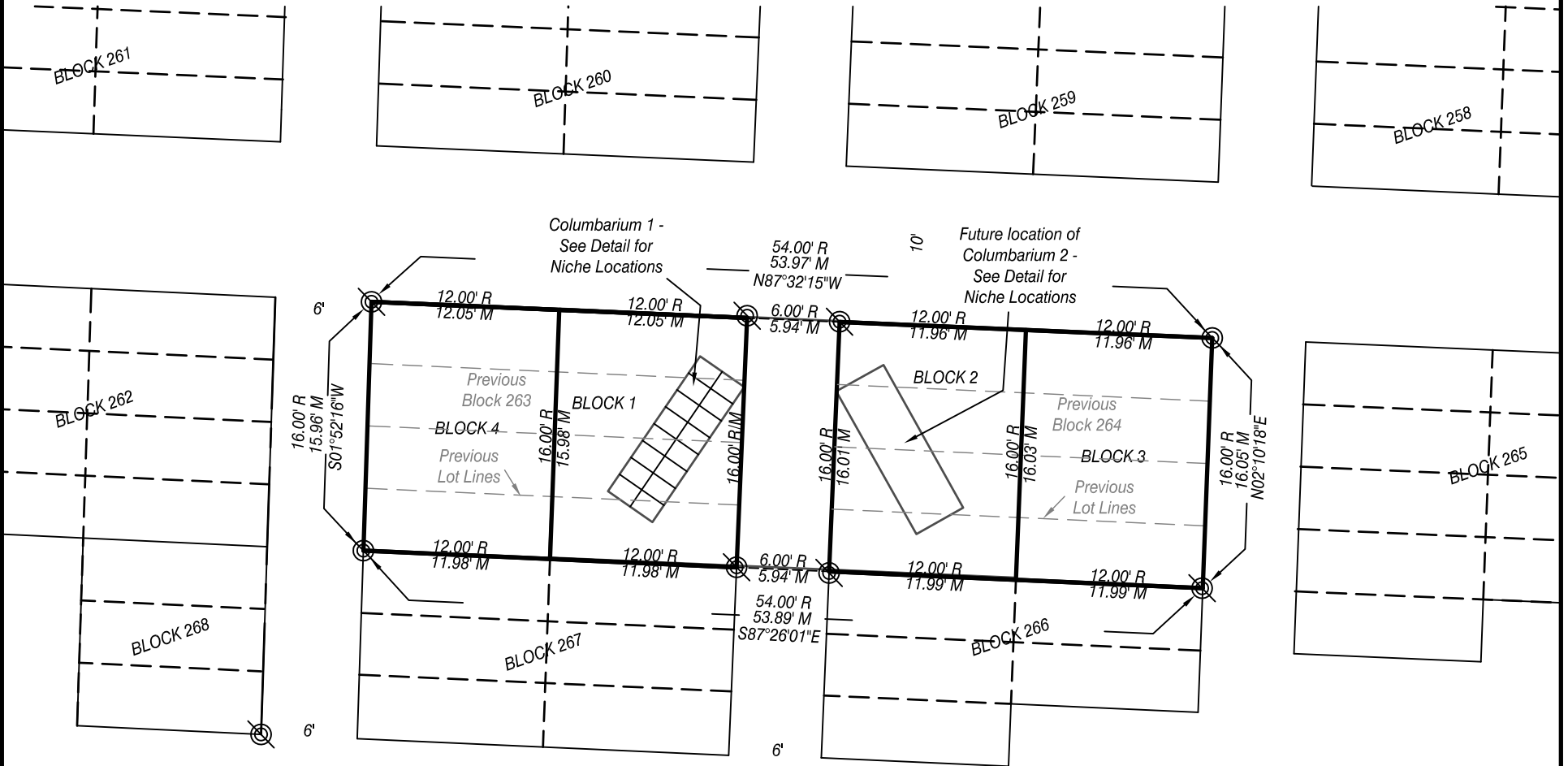
**FINAL PLAT**

**LOTS A-1 THROUGH J-8,  
BLOCKS 1 AND 2,  
AND BLOCKS 3 AND 4,  
COLUMBARIUM ADDITION TO FAIRVIEW CEMETERY,**

**A REPLAT OF VACATED LOTS 1 THROUGH 8, BLOCK 263  
AND LOTS 1 THROUGH 8, BLOCK 264, REPLAT NO. THREE OF SECTION F,  
REPLAT OF REPLAT NO. TWO OF SECTION E AND F, AND PART OF SECTION D, ALL  
PART OF THIRD ADDITION TO FAIRVIEW CEMETERY**

**AN ADDITION TO THE CITY OF SCOTTSBLUFF,  
SCOTTS BLUFF COUNTY, NEBRASKA**

**SITUATED IN THE NORTHWEST QUARTER OF SECTION 13,  
TOWNSHIP 22 NORTH, RANGE 55 WEST OF THE 6TH P.M.,  
SCOTTS BLUFF COUNTY, NEBRASKA**



- LEGEND**
- EXISTING 1/2" ROD
  - SET 5/8" x 24" REBAR, OR AS NOTED
  - MEASURED
  - RECORD
  - RIGHT OF WAY
  - BLOCK NUMBER

NOTE: All easements, restrictions and other documents that may affect these platted lots, that are of record or not of record, may not be shown on this plat.