

City of Scottsbluff, Nebraska
Monday, October 13, 2014
Regular Meeting

Item NewBiz2

Final Plat with Ordinance to vacate N. Hts.

Final Plat: Lot 12A, Blk 2, Northern Heights

Applicant(s): M.C. Schaff & Associates

Owner(s): Torrington Town Homes LLC

Location: S of 35th St. & W of 2nd Ave

Staff Contact: Annie Urdiales

Make a NEGATIVE RECOMMENDATION to the City Council to disapprove the final of plat Lot 12A, Block 2, Northern Heights Addition a replat of vacated Lot 12, Block 2, Northern Heights Addition and part of 20' alley an addition to the City of Scottsbluff, Scotts Bluff County, Nebraska situated in the SE ¼ of Section 14, T22N, R55W of the 6th P.M, City of Scottsbluff, Scotts Bluff County, Nebraska for the following reason(s):

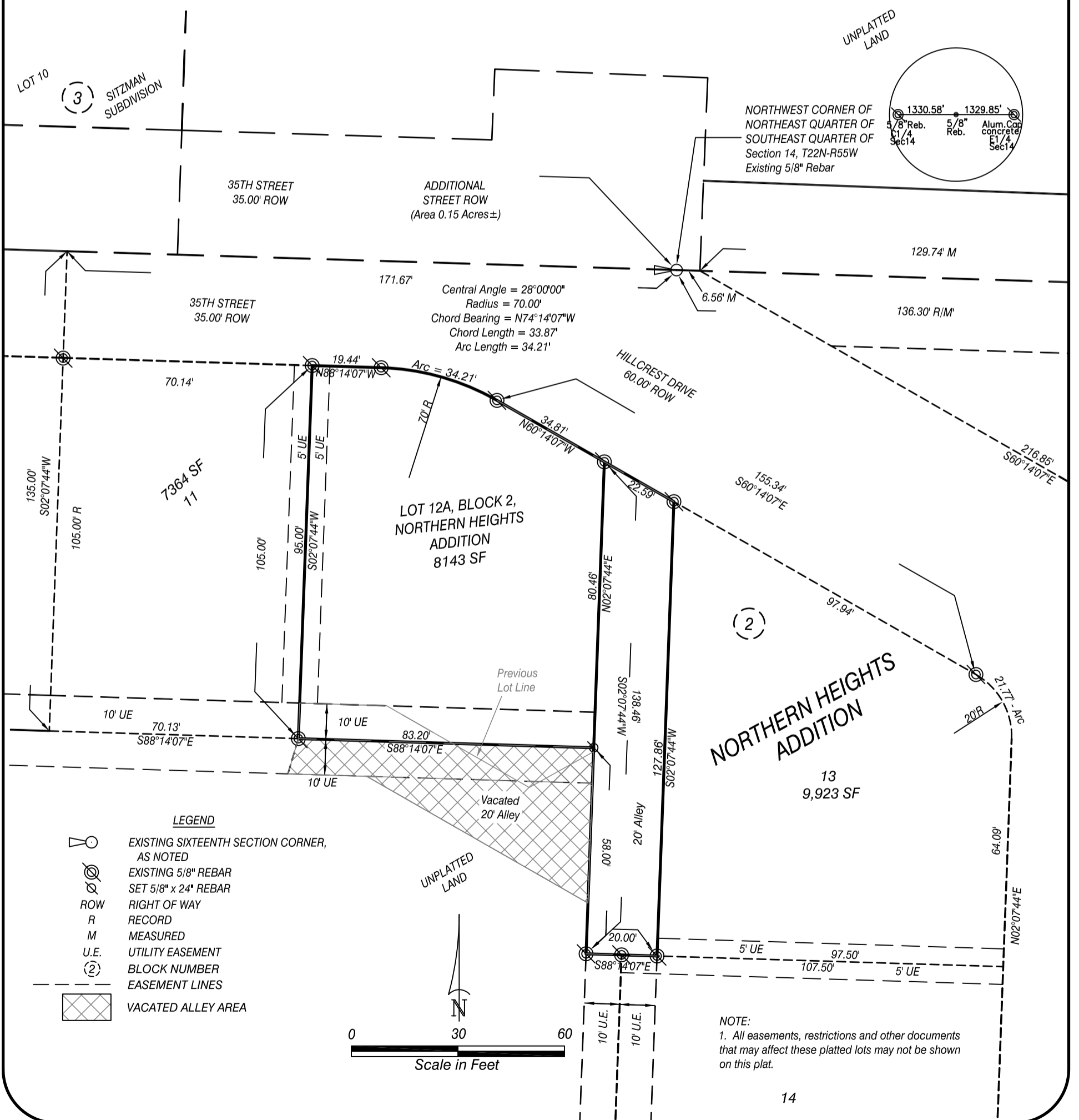
Table

Make the motion to TABLE the final plat of Lot 12A, Block 2, Northern Heights Addition a replat of vacated Lot 12, Block 2, Northern Heights Addition and part of 20' alley an addition to the City of Scottsbluff, Scotts Bluff County, Nebraska situated in the SE ¼ of Section 14, T22N, R55W of the 6th P.M, City of Scottsbluff, Scotts Bluff County, Nebraska for the following reason(s):

FINAL PLAT LOT 12A, BLOCK 2; NORTHERN HEIGHTS ADDITION

**A REPLAT OF VACATED LOT 12, BLOCK 2,
NORTHERN HEIGHTS ADDITION, AND PART OF VACATED 20' ALLEY,
AN ADDITION TO THE CITY OF SCOTTSBLUFF,
SCOTTS BLUFF COUNTY, NEBRASKA**

SITUATED IN THE SOUTHEAST QUARTER OF SECTION 14,
TOWNSHIP 22 NORTH, RANGE 55 WEST OF THE 6TH P.M.,
SCOTTS BLUFF COUNTY, NEBRASKA



ORDINANCE NO. _____

AN ORDINANCE OF THE CITY OF SCOTTSBLUFF, NEBRASKA VACATING LOT 12, BLOCK 2, NORTHERN HEIGHTS ADDITION TO THE CITY OF SCOTTSBLUFF AS WELL AS VACATING A PART OF A 20' ALLEY IN BLOCK 2 OF NORTHERN HEIGHTS ADDITION, ALL IN THE CITY OF SCOTTSBLUFF, SCOTTS BLUFF COUNTY, NEBRASKA.

BE IT ORDAINED BY THE MAYOR AND CITY COUNCIL OF THE CITY OF SCOTTSBLUFF, NEBRASKA:

Section 1. The owner of the property involved, Steve Herron, has requested that the City of Scottsbluff vacate the following property to allow for a replat:

Lot 12, Block 2, Northern Heights Addition to the City of Scottsbluff, Scotts Bluff County, Nebraska, situated in the southeast quarter of Section 14, Township 22 North, Range 55 West of the 6th P.M., Scotts Bluff County, Nebraska, including property described:

Commencing at the southwest corner of Lot 12, Block 2, Northern Heights Addition, as monumented by a 5/8" Rebar with cap, thence bearing S88°14'07"E, a distance of 24.46 feet, thence bearing S60°14'07"E, a distance of 21.30 feet, to the Point of Beginning, thence continuing on said bearing S60°14'07"E, a distance of 25.00 feet, thence bearing N60°56'48"E, a distance of 20.71 feet, thence bearing N02°07'44"E, a distance of 1.13 feet, thence bearing N88°14'07"W, a distance of 39.86 feet, to the Point of Beginning, containing an area of 244 square feet, more or less; and

Part of a 20' alley in Block 2, Northern Heights Addition to the City of Scottsbluff, Scotts Bluff County, Nebraska, situated in the southeast quarter of Section 14, Township 22 North, Range 55 West of the 6th P.M., Scotts Bluff County, Nebraska, including property described:

Beginning at the southwest corner of Lot 12, Block 2, Northern Heights Addition, as monumented by a 5/8" Rebar with cap, thence bearing S02°07'44"W, a distance of 10.00 feet, thence bearing S88°14'07"E, a distance of 43.33 feet, thence bearing N60°14'07"W, a distance of 21.30 feet, thence bearing N88°14'07"W, a distance of 24.46 feet, to the Point of Beginning, containing an area of 339 square feet, more or less; and

Beginning at the southwest corner of Lot 12, Block 2, Northern Heights Addition, as monumented by a 5/8" Rebar with cap, thence bearing S02°07'44"W, a distance of 10.00 feet, thence bearing S16°24'27"W, a distance of 10.34 feet, thence bearing S88°14'07"E, a distance of 22.15 feet, thence bearing S60°14'07"E, a distance of 71.78 feet, thence bearing N02°07'44"E, a distance of 42.58 feet, thence bearing S60°56'48"W, a distance of 20.71 feet, thence bearing N60°14'07"W, a distance of 46.30 feet, thence bearing N88°14'07"W, a distance of 24.46 feet, to the Point of Beginning, containing an area of 2,011 square feet, more or less;

as more fully set forth on the attached map, marked as Exhibit A and incorporated by this reference.

Section 2. The City Council finds that the requesting party is the owner and that it is in the best interest of the City that the property be vacated as requested.

Section 3. Lot 12, Block 2, Northern Heights Addition to the City of Scottsbluff, along with portions of the alley as set forth above, are hereby vacated to allow for a replat of the property.

Section 4. This Ordinance shall become effective upon its passage, approval and publication as provided by law.

PASSED AND APPROVED on _____, 2014.

Attest:

Mayor

City Clerk (Seal)

Approved as to form:

Deputy City Attorney

