

# **City of Scottsbluff, Nebraska**

**Monday, December 16, 2013**

**Regular Meeting**

## **Item Resolut.1**

**Council to consider a Resolution authorizing the City to apply for assistance from the Safe Routes to School Program.**

**Staff Contact: Perry Mader, Park and Rec Director**

RESOLUTION NO. \_\_\_\_\_.

BE IT RESOLVED BY THE MAYOR AND CITY COUNCIL OF THE CITY OF SCOTTSBLUFF, NEBRASKA:

WHEREAS, THE CITY OF SCOTTSBLUFF, NEBRASKA, proposed to apply for assistance from the SAFE ROUTES TO SCHOOL PROGRAM for the purpose of improving crosswalk intersections, ADA accessibility, creating/improving sidewalk routes and pathways, and

WHEREAS, the City of Scottsbluff, Nebraska has available the funds to finance the activity until reimbursed by the Safe Routes to School Program, and the financial capability to operate, maintain, and manage the completed project in a safe and attractive manner for public use; and

WHEREAS, the proposed application and supporting documents were made available for public review at a properly announced meeting of the City of Scottsbluff, Nebraska;

NOW, THEREFORE, BE IT RESOLVED BY THE MAYOR AND CITY COUNCIL OF THE CITY OF SCOTTSBLUFF, NEBRASKA that the City of Scottsbluff, Nebraska applies for assistance from the Safe Routes to School Program for the purpose improving crosswalk intersections, ADA accessibility, creating/improving sidewalk routes and pathways.

Passed and approved this \_\_\_\_\_.

\_\_\_\_\_  
Mayor

ATTEST:

\_\_\_\_\_  
City Clerk

## Safe Routes Project Description:

### Westmoor Elementary School Site:

1. ADA ramps to be added to all corners (10 Corners and 6 Tee)
2. ADA ramps added at two main entries into building
3. Raise cross walks two directions at Avenue K and 18<sup>th</sup>
4. Raise cross walks two directions at Avenue K and 16<sup>th</sup>
5. Pathway from north side of 16<sup>th</sup> Street between Avenue M and L, north to Playground (235' x 8' wide)
6. New Bike Racks

### Westmoor Routes:

1. 16<sup>th</sup> Street from Avenue P to Avenue J: Good sidewalks, replace sections of damages driveway and alleys; install ADA ramps at each crossing (6 ramps); and install crosswalk markings and signs.
2. 17<sup>th</sup> Street from Avenue J to Avenue I: Install ADA Ramps at Avenue J (2); remove 4' wide and replace with 5' wide section of sidewalk (60' x 5'); replace alley crossing (20' x 5' x 6" thick). Ramps will be installed at Avenue I under the City pavement project.
3. 17<sup>th</sup> Street from Avenue I to Avenue G: Install new 5' wide sidewalk behind curb (670' x 5' wide; replace driveways as needed (6" thick); Install ADA ramps at Avenue G and H (4 corner and 2 Tee); and install crosswalk markings and signs.
4. Avenue M from 18<sup>th</sup> Street to 20<sup>th</sup> Street: Remove and replace any damage sections of sidewalks; install ADA ramp at 20<sup>th</sup> Street; and improve crosswalk marking and signs.
5. Avenue N from 16<sup>th</sup> Street to Overland Drive: Remove and replace any damage sections of sidewalks; install ADA ramps at 16<sup>th</sup> Street (1 south side); and improve crosswalk marking and signs.
6. Overland Drive from Avenue N to Park Road (connection with proposed pathway): Provide ADA ramps at Overland (2 corner and 2 tee); remove and replace any damage sections of sidewalk, including alleys at 6" thick; install ADA ramps at Avenue O and Park Drive (3 ramps); improve crosswalk markings and signs; and replace existing flashing crosswalk signals at Overland with new system set on timer to operate only during student schedules
7. 18<sup>th</sup> Street from Avenue K to Avenue I and 20<sup>th</sup> Street: From alley on the north side of 18<sup>th</sup> Street west of Avenue K, replace alley crossing; install new 8' wide pathway near alley north into Westmoor Park, proceeding north to 20<sup>th</sup> Street (790' x 8' wide); remove and replace existing sidewalk and driveway adjacent to parking lot to corner of 20<sup>th</sup> Street and Avenue I (260' x 8' wide).

#### Lincoln Heights Elementary School Site:

1. ADA Ramps at all corners, 16 corner ramps.
2. ADA ramps at main front sidewalk to building, 2 Tee ramps

#### Lincoln Heights Routes:

1. Avenue D from 23<sup>rd</sup> Street to 27<sup>th</sup> Street: Remove 4' wide sidewalk and replace with 5' wide sidewalk (1,200 x 5'); install ADA ramps at 24<sup>th</sup>, 25<sup>th</sup> and 26<sup>th</sup> Streets (6 corner ramps); and install crosswalk markings and signs.
2. Avenue D from 22<sup>nd</sup> Street to 20<sup>th</sup> Street: Remove 4' wide sidewalk and replace with 5' wide sidewalk (310 x 5'); install ADA ramps at 21<sup>st</sup>, and 20<sup>th</sup> Streets (3 corner ramps and 1 tee); install crosswalk markings and signs; and replace existing flashing crosswalk signals at 20<sup>th</sup> with new system set on timer to operate only during student schedules.

#### 24<sup>th</sup> Street Pathway:

Description: Create a bike pathway on south (or north) side of 24<sup>th</sup> Street from Avenue I (connection to proposed Pathway) east to Broadway and the Middle School.

1. Remove existing pavement (approximate width of 8'), curb and gutter, and sidewalk. (3,075' x 8' wide)
2. Install new curb and gutter (3,250 L.F.)
3. Install 8' wide pathway, 5' away from new curb (2,750 S.Y.)
4. Install ADA ramps at all intersections with crosswalk markings and signs. (17 ramps)
5. Install crosswalk markings and signs.
6. At Broadway, remove existing flashing lights and install new system set on timer to operate only during student schedules and using new MUTCD standards for stopping traffic back away from crosswalk with new crosswalk signs.

#### Roosevelt Elementary School Site:

1. ADA ramps to be added to all corners (10 Corners and 4 Tee)

#### Roosevelt Routes:

1. 8<sup>th</sup> Ave, Immediately North of Roosevelt School to 18<sup>th</sup> st. ADA Ramps and Crossings and signs at 15<sup>th</sup>, 17<sup>th</sup>, and 18<sup>th</sup> (7 Corners). Replace damaged SW sections and replace 4' wide sections of sidewalk with 5' wide sidewalk (~350' of 4' SW).
2. 18<sup>th</sup> St. 8<sup>th</sup> Ave to 10<sup>th</sup> Avenue. ADA Ramps, Signs and Crossings at 9<sup>th</sup> and 10<sup>th</sup> Avenue. Remove and replace 4' Wide Sidewalk with 5' Wide sidewalk (620' x 5' Wide)
3. 18<sup>th</sup> St. 8<sup>th</sup> Ave to 4<sup>th</sup> Ave, 1200 lf, ADA ramps, at 6<sup>th</sup> and 7<sup>th</sup> avenue, crossings at 5<sup>th</sup> Avenue, Remove and replace broken sidewalk.
4. 9<sup>th</sup> Avenue from Overland to 7<sup>th</sup> St., ADA ramps, signs and crossings at 8<sup>th</sup>, 9<sup>th</sup>, 10<sup>th</sup>, 11<sup>th</sup> (w/ crossing to park), and 12<sup>th</sup> (10 corners, 1 tee) remove and replace damaged sections of sidewalk.
5. 12<sup>th</sup> St, 9<sup>th</sup> Ave. to 15<sup>th</sup> Ave., ADA ramps, signs, and crossings at 10<sup>th</sup>, 11<sup>th</sup>, 12<sup>th</sup>, and 15<sup>th</sup> (6 corners). Remove and replace damaged concrete.
6. 15<sup>th</sup> Avenue, 12<sup>th</sup> St. 9<sup>th</sup> St., Remove and replace damaged concrete, Crossing at 15<sup>th</sup> St. and 9<sup>th</sup> Avenue.

#### Middle School Site:

1. From Broadway and 24<sup>th</sup> Street to 23<sup>rd</sup> Street: Remove existing 6' wide sidewalk at back of curb and install new 8' wide pathway 5' clear of back of curb. (175')
2. From 23<sup>rd</sup> Street From Broadway to Second Avenue: Remove existing 6' wide sidewalk along right-of-way and replace with 8' wide pathway. (680')
3. From Second Avenue and 23<sup>rd</sup> Street to 27<sup>th</sup> Street: Install new 8' wide pathway. (1,480') Leave back of curb sidewalk in place for student drop-off.
4. On Second Avenue at 34<sup>th</sup> and 25<sup>th</sup> Street: Install ADA ramps on all corners (4 corner ramps and 4 tee type ramps)
5. On 23<sup>rd</sup> Street form Second Avenue to Fifth Avenue: Remove and replace sidewalk damaged; improve ADA access across alleys and driveways; install new crosswalk flashing beacon and signs at Fifth Avenue; provide new crosswalks marking at all streets (2 crossings).

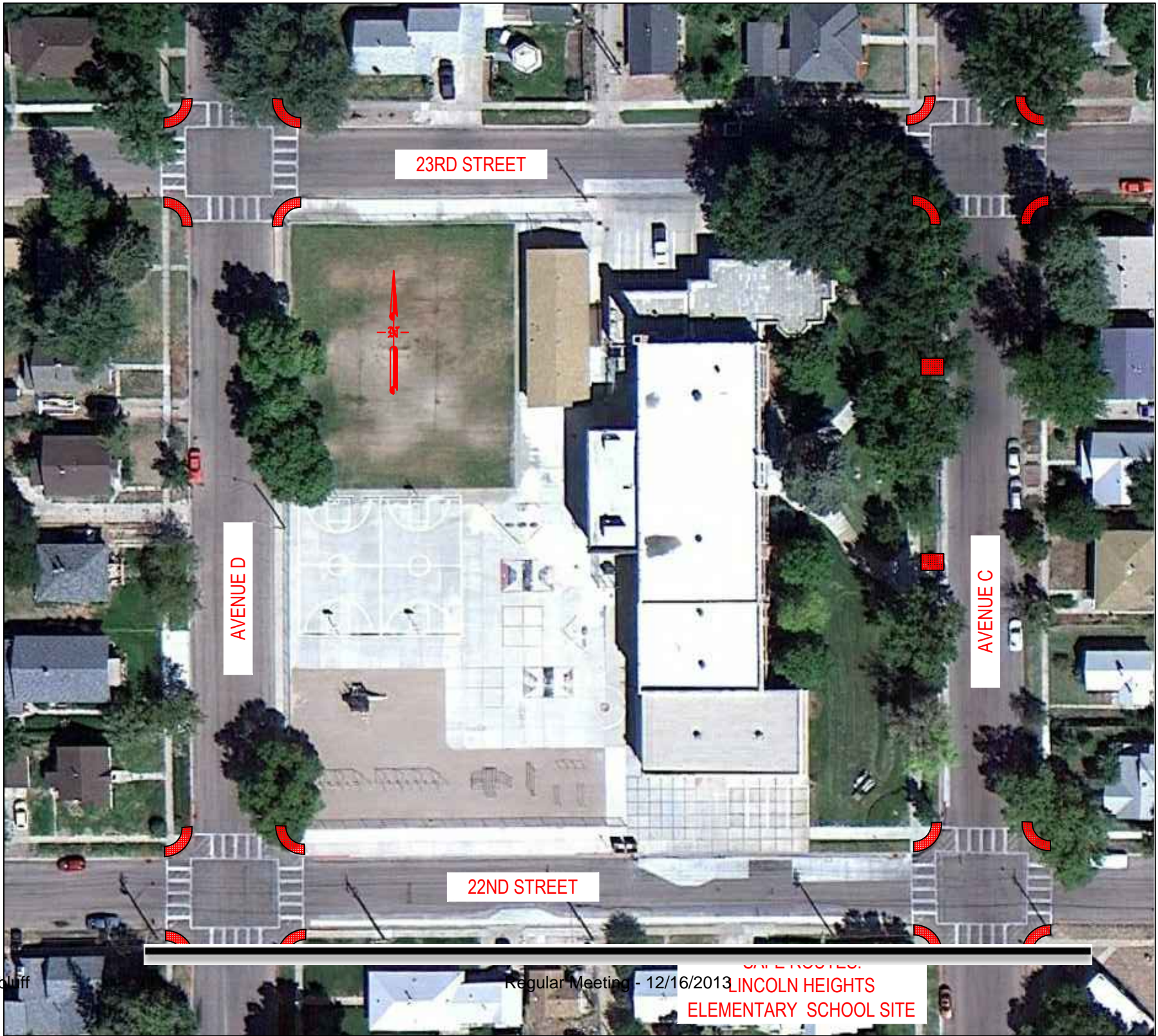
Longfellow Elementary School Site:

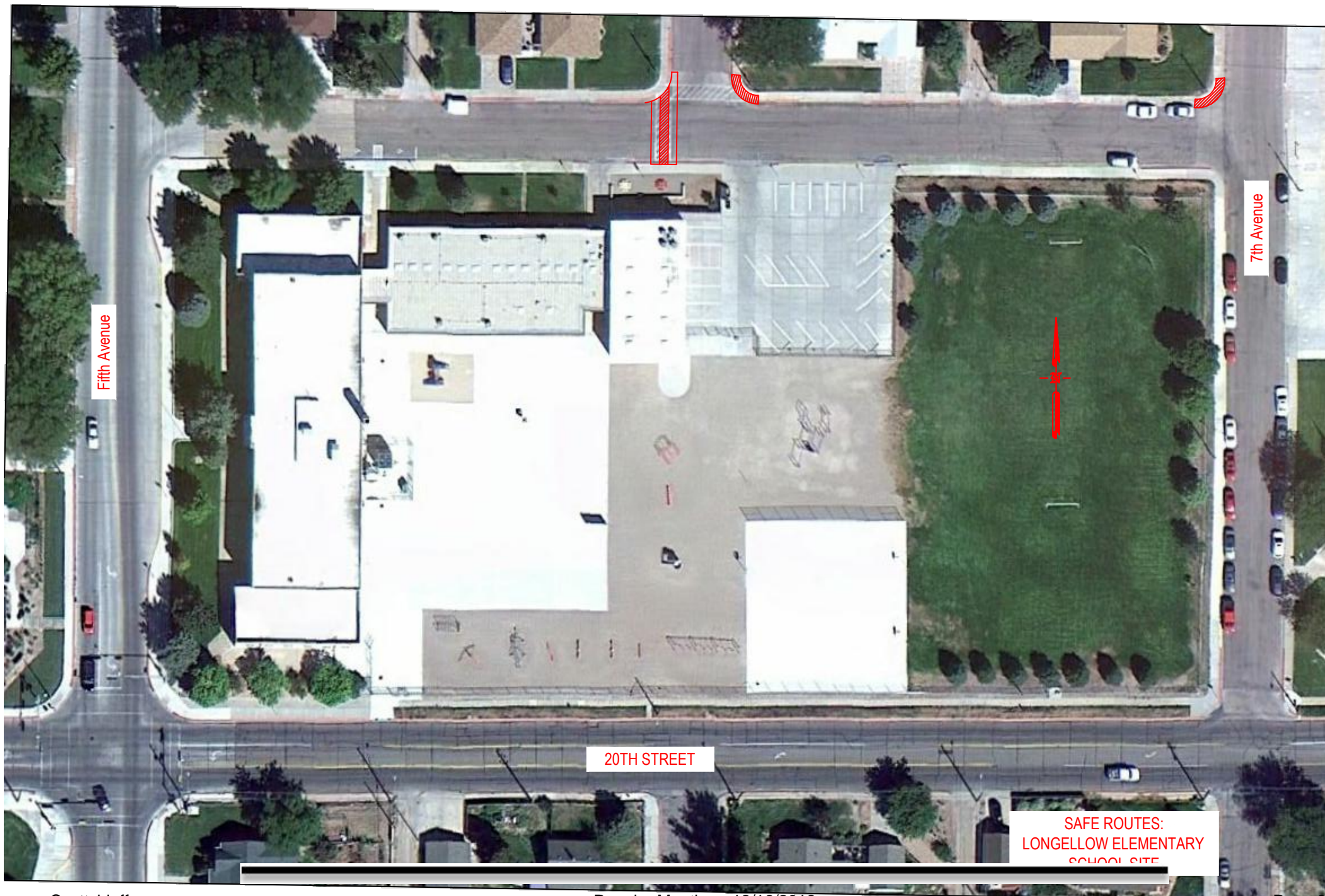
1. 21<sup>st</sup> Street: Provide raised crosswalk at 6<sup>th</sup> Avenue; install ADA ramps on north side of 21<sup>st</sup> Street at 6<sup>th</sup> and 7<sup>th</sup> Streets (2 corner ramps); provide crosswalk markings on 7<sup>th</sup> Avenue at 21<sup>st</sup> and 20<sup>th</sup> Streets (2 sets).
2. Fifth Avenue from 23<sup>rd</sup> Street to 21<sup>st</sup> Street: (Fifth Avenue was placed recently with ADA ramps and sidewalk replacement); Install crosswalk markings at 22<sup>nd</sup> Street on the east side.
3. Library Route: Improve pre-signs for intersection of Fifth Avenue and 20<sup>th</sup> Street; there are multiple routes around and through Centennial Park that meet current standards; provide crosswalk markings and signs at Fourth Avenue and 19<sup>th</sup> Street (2 sets).

State of Nebraska  
Department of Roads  
**Safe Routes to School Program**  
**Infrastructure Project Request (Intent to Apply Draft Application)**

<b>1.</b>	APPLICANT NAME: CITY OF SCOTTSBLUFF, NE	TYPE OF APPLICANT <i>(Check One)</i> : <input type="checkbox"/> Village <input type="checkbox"/> NRD	<input checked="" type="checkbox"/> City	<input type="checkbox"/> County	<input type="checkbox"/> Other	<input type="checkbox"/> State
<b>2.</b>	APPLICANT CONTACT PERSON: PERRY MADER		FAX NUMBER: (308) 632-4637			
	MAILING ADDRESS: <i>(Street)</i> 2525 CIRCLE DRIVE	CITY: SCOTTSBLUFF	STATE: NE	ZIP: 69361		
	DAYTIME PHONE: (308) 632-0057	E-MAIL: PMADER@SCOTTSBLUFF.ORG				
<b>3.</b>	CONTACT PERSON: <i>(Print Name &amp; Title)</i> PERRY MADER, PARKS DEPARTMENT DIRECTOR		SIGNATURE		DATE:	
<b>4.</b>	APPLICANT: <i>(Print Name &amp; Title)</i> RANDY MEININGER, MAYOR		SIGNATURE		DATE:	

<b>5.</b>	PROJECT NAME: <i>(Example: Rushville Pedestrian &amp; Bicycle Trail; Hawthorne Elementary School Traffic Diversion Improvement)</i> SCOTTSBLUFF SCHOOLS SAFE ROUTES		
<b>6.</b>	<p>PROJECT DESCRIPTION/LOCATION: <i>(Include location, work to be performed, and attach map)</i> THE PROJECT WOULD CONSIST OF IMPROVING; SIDEWALKS, STREET CROSSINGS ,ADA RAMPS, AND SIGNS, AS WELL AS INSTALLING NEW; PATHS, RAISED CROSSINGS , AND PAINTED CROSSINGS ALONG LOCATIONS AROUND THE 5 SCHOOLS ( DESIGNATED AS SAFE ROUTES ON THE ATTACHED MAP. A DETAILED LIST OF IMPROVEMENTS IS ATTACHED.</p> <p>a) CURRENT WALK/BICYCLE CONDITIONS: SEE ATTACHED CHECKLISTS</p> <p>b) SCHOOL AND STUDENT DEMOGRAPHICS: (TO BE COMPLETED)</p> <p>c) DESCRIBE HOW THE PROJECT WILL ENABLE &amp; ENCOURAGE K-8 STUDENTS TO WALK AND BICYCLE TO SCHOOL: THE PROJECT WILL ENCOURAGE K-8 STUDENTS BY AND DESIGNATING ESTABLISHED WALKING/BIKING SAFE ROUTES AROUND AND TO THE EXISTING SCHOOLS. THESE ROUTES WILL THEN BE IMPROVED THROUGH; WIDENING AND FIXING SIDEWALKS, INSTALLING RAISED AND PAINTED CROSSINGS WITH SIGNS, INSTALLING ADA RAMPS AT STREET CROSSINGS AND INSTALLING NEW BIKE PATHS WITH SECURE BICYCLE PARKING FACILITIES AT THE SCHOOLS.</p>		
<b>7.</b>	PROJECT COST TOTAL: \$1,363,794.00 FEDERAL FUNDS REQUESTED: \$1,363,794.00		
<b>8.</b>	<table style="width: 100%;"> <tr> <td style="width: 50%;">ADDITIONAL FUNDS: <i>(If yes, please describe)</i> <input type="checkbox"/> yes <input checked="" type="checkbox"/> no</td> <td style="width: 50%;">PERCENTAGE OF TOTAL PROJECT COST: 100%</td> </tr> </table>	ADDITIONAL FUNDS: <i>(If yes, please describe)</i> <input type="checkbox"/> yes <input checked="" type="checkbox"/> no	PERCENTAGE OF TOTAL PROJECT COST: 100%
ADDITIONAL FUNDS: <i>(If yes, please describe)</i> <input type="checkbox"/> yes <input checked="" type="checkbox"/> no	PERCENTAGE OF TOTAL PROJECT COST: 100%		
<b>9.</b>	PROJECT TYPE: <input checked="" type="checkbox"/> Traffic Calming or Speed Reduction Improvements <input checked="" type="checkbox"/> Pedestrian and bicycle crossing improvements <input checked="" type="checkbox"/> Sidewalk improvements <input checked="" type="checkbox"/> Off-street bicycle and pedestrian facilities <input checked="" type="checkbox"/> Secure bicycle parking facilities <input type="checkbox"/> Traffic diversion improvements in the vicinity of schools		



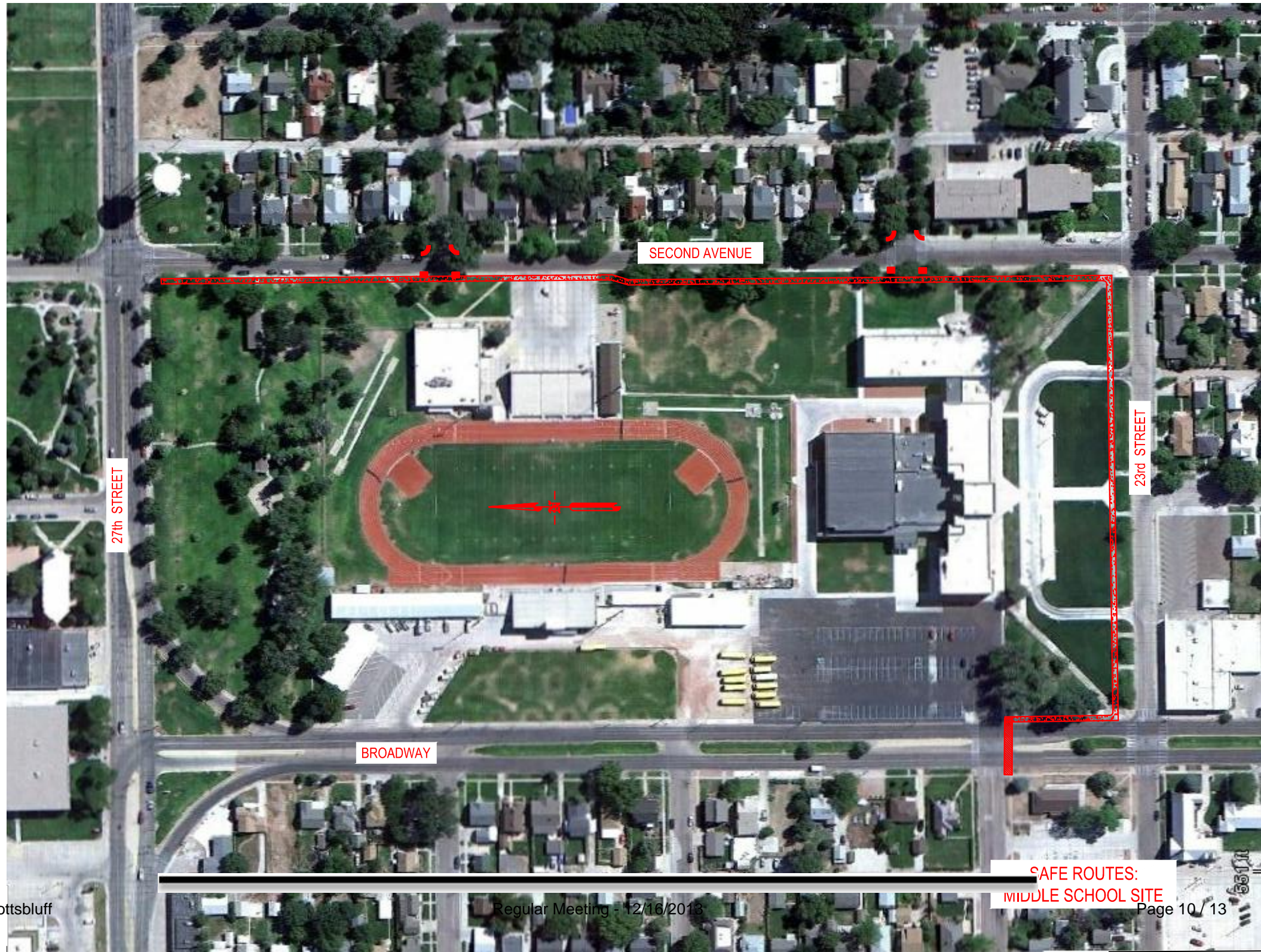


Fifth Avenue

7th Avenue

20TH STREET

SAFE ROUTES:  
LONGELLOW ELEMENTARY  
SCHOOL SITE



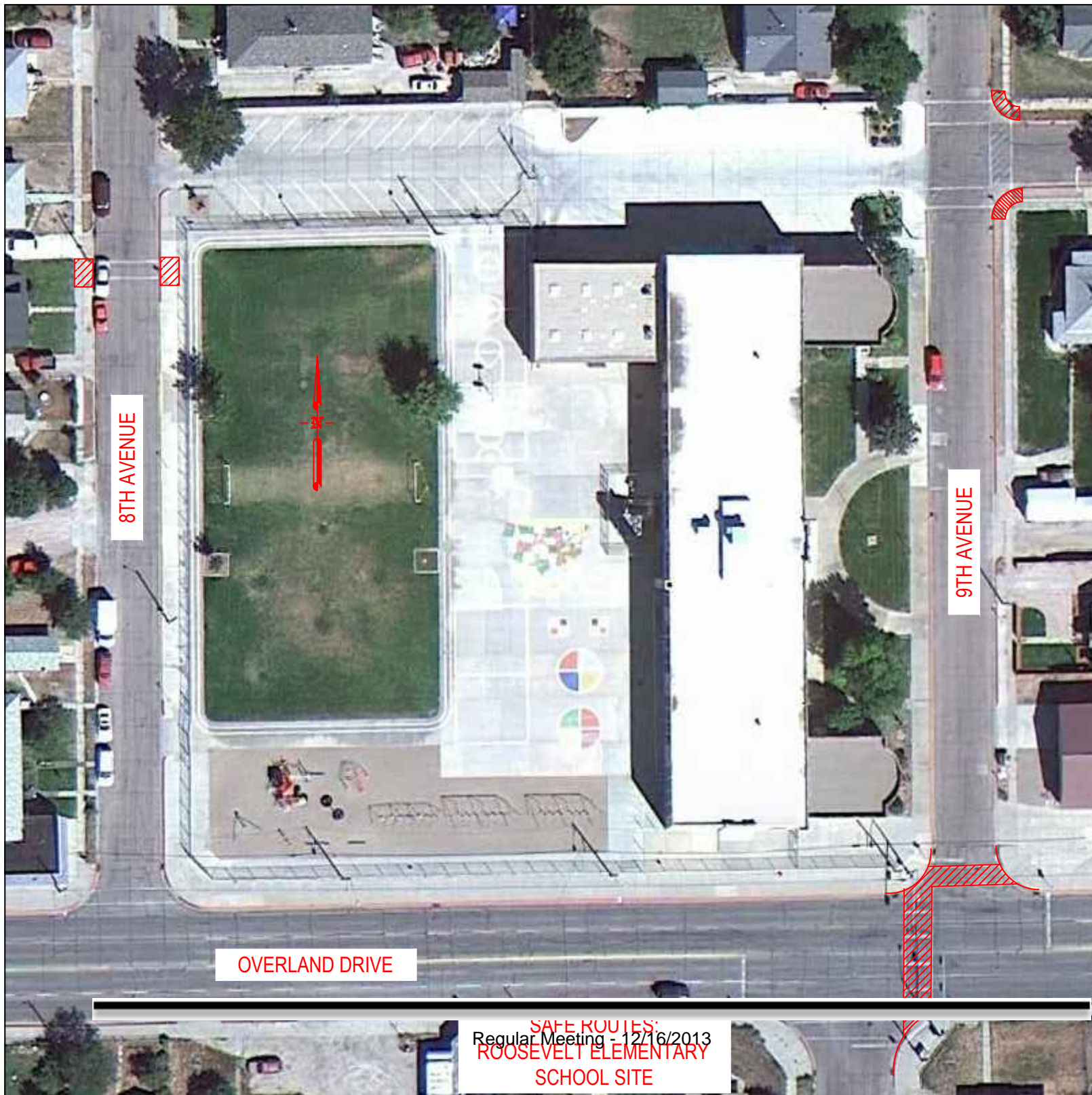
SECOND AVENUE

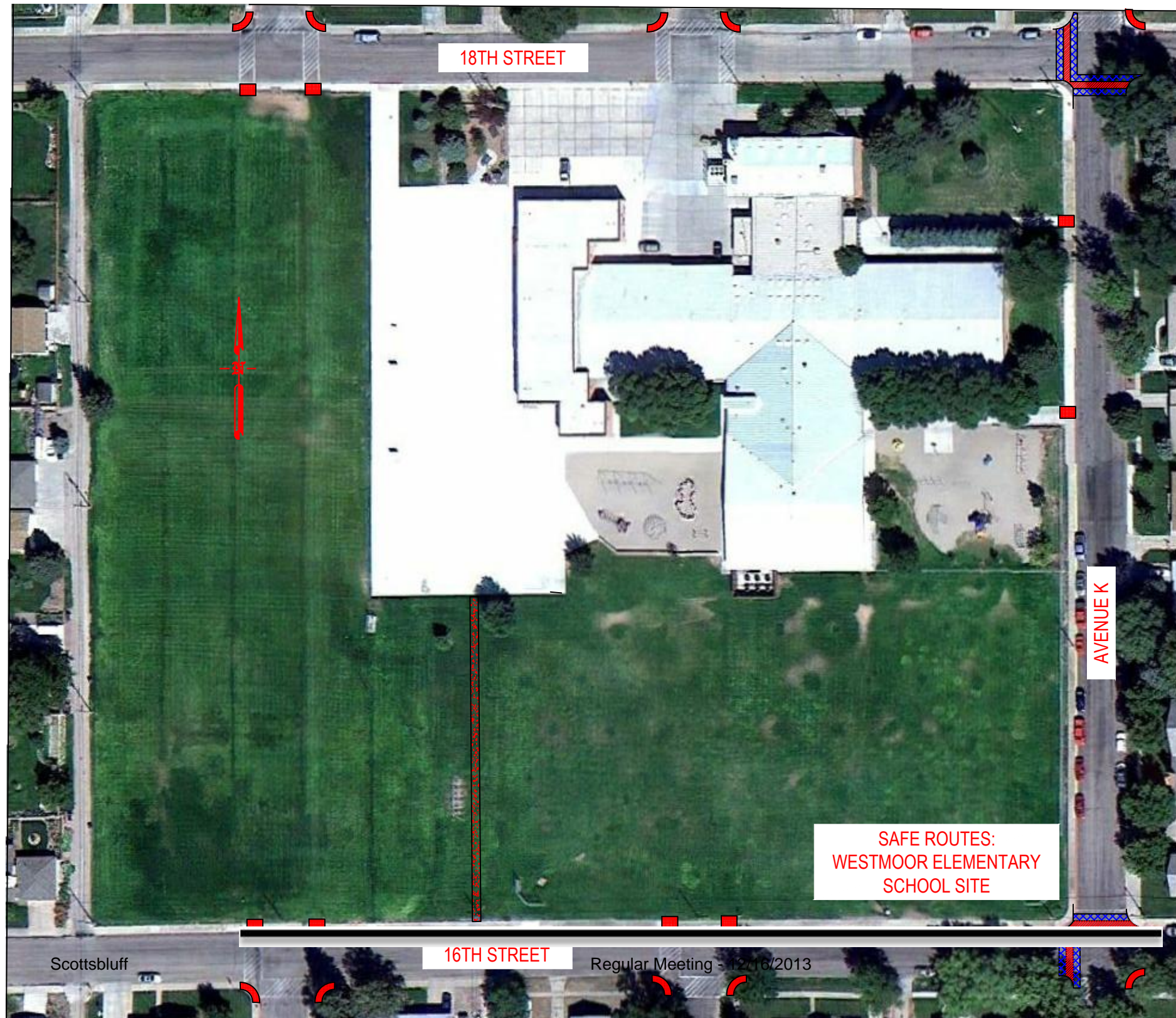
27th STREET

23rd STREET

BROADWAY

SAFE ROUTES:  
MIDDLE SCHOOL SITE





18TH STREET

AVENUE K

SAFE ROUTES:  
WESTMOOR ELEMENTARY  
SCHOOL SITE

16TH STREET

Scottsbluff

Regular Meeting - 12/16/2013

