

City of Scottsbluff, Nebraska

Monday, May 17, 2021

Regular Meeting

Item Subdiv.2

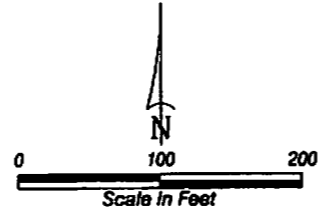
Council to discuss and consider action on a preliminary and final plat of lots 1, 2, and 3 Block 1, King's Acres Subdivision, a Replat of Block 1, King's Acres Subdivision and approve the Resolution.

Staff Contact: Zachary Glaubius, Projects & Planning Coordinator

FINAL PLAT

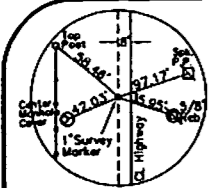
LOTS 1, 2 AND 3, BLOCK 1, KING'S ACRES SUBDIVISION A REPLAT OF BLOCK 1, KING'S ACRES SUBDIVISION

SITUATED IN THE NORTHWEST QUARTER OF THE
SOUTHWEST QUARTER OF SECTION 11,
TOWNSHIP 22 NORTH, RANGE 55 WEST
OF THE 6TH P.M., SCOTT BLUFF COUNTY, NEBRASKA

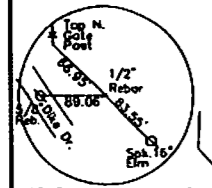


- LEGEND**
- EXISTING QUARTER SECTION CORNER, AS NOTED
 - EXISTING SIXTEENTH SECTION CORNER, AS NOTED
 - EXISTING 5/8" REBAR, UNLESS OTHERWISE NOTED
 - SET 5/8" 2'-4" REBAR
 - R** RECORD
 - M** MEASURED
 - ROW** RIGHT OF WAY
 - U.E.** UTILITY EASEMENT

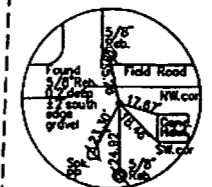
NOTE: All easements, restrictions and other documents that may affect these platted lots, that are of record or not of record, may not be shown on this plat.
JOB# RM210060-00



WEST QUARTER CORNER
Section 11, T22N-R55W
Found 1" Survey Marker



SOUTHWEST CORNER OF
NORTHWEST QUARTER OF
SOUTHWEST QUARTER
Section 11, T22N-R55W
Found 1/2" Rebar



SOUTHEAST CORNER OF
NORTHWEST QUARTER OF
SOUTHWEST QUARTER
Section 11, T22N-R55W
Found 5/8" Rebar

**LOT 1, BLOCK 1,
KING'S ACRES SUBDIVISION**

Total Area 9.88 Acres ±
Easement Area - 0.28 Acres ±
Net Area = 9.58 Acres ±

**LOTS 1, 2 AND 3, BLOCK 1,
KING'S ACRES SUBDIVISION**

Total Area 0.58 Acres ±
Easement Area - 0.08 Acres ±
Net Area = 0.50 Acres ±

**LOT 2, BLOCK 1,
KING'S ACRES SUBDIVISION**

Total Area 1.04 Acres ±
Easement Area - 0.12 Acres ±
Net Area = 0.92 Acres ±

**LOT 3, BLOCK 1,
KING'S ACRES
SUBDIVISION**

RESOLUTION NO. 21-___

BE IT RESOLVED BY THE MAYOR AND CITY COUNCIL OF THE CITY OF SCOTTSBLUFF, NEBRASKA:

WHEREAS, BE IT RESOLVED, the preliminary and final plat of Lots 1, 2 and 3, Block 1, King's Acres Subdivision, a Replat of Block 1, King's Acres Subdivision, situated in the NW¹/₄ of the SW¹/₄ of Section 11, Township 22 North, Range 55 West of the 6th P.M., Scotts Bluff County, Nebraska, dated April 8, 2021, duly made, acknowledged and certified, is approved and the Mayor is authorized to sign the Plat on behalf of the City of Scottsbluff, Nebraska. Such Plat is ordered filed and recorded in the office of the Register of Deeds, Scotts Bluff County, Nebraska.

Passed and approved this 17th day of May, 2021.

Mayor

ATTEST:

City Clerk