

# **City of Scottsbluff, Nebraska**

**Monday, June 20, 2016**

**Regular Meeting**

## **Item Subdiv.2**

**Council to consider a preliminary and final plat of Lots 1 and 2,  
Block 6, Immigrant Trail Subdivision and approve the Resolution.**

**Staff Contact: Annie Folck, City Planner**

# Agenda Statement

Item No.

For meeting of: June 20, 2016

**AGENDA TITLE:** Preliminary & Final Plat of Lots 1 & 2, Block 6, Immigrant Trail Subdivision a replat of Block 6 and part of Lot 2, Block 1, Second Immigrant Trail Subdivision with Ordinance to Vacate – Lot 2A, Block 1, Second Immigrant Trail Subdivision, Scotts Bluff County, Nebraska.

**SUBMITTED BY DEPARTMENT/ORGANIZATION:** Development Services

**PRESENTATION BY:** Staff

**SUMMARY EXPLANATION:** This preliminary and final plat includes the area vacated with the ordinance to vacate Lot 2A, Block 1, Second Immigrant Trail Subdivision. The purpose of the final plat is to allow for the sale of the six acres in the Immigrant Trail Subdivision which was previously approved by City Council. Lot 1, Block 6, contains the six acres which will be sold leaving 39.22 acres on Lot 2, Block 6, Immigrant Trail Subdivision. The final plat meets all of the guidelines of the M-1 zoning district.

**BOARD/COMMISSION RECOMMENDATION:** The Planning Commission approved the preliminary and final plat of Lots 1 & 2, Block 6, Immigrant Trail Subdivision a replat of Block 6 and part of Lot 2, Block 1, Second Immigrant Trail Subdivision at their regular meeting of June 13, 2016.

**STAFF RECOMMENDATION:** Staff recommends City Council approve the ordinance to vacate.

---

## EXHIBITS

Resolution      Ordinance      Contract      Minutes x      Plan/Map x

Other (specify) ☐ \_\_\_\_\_

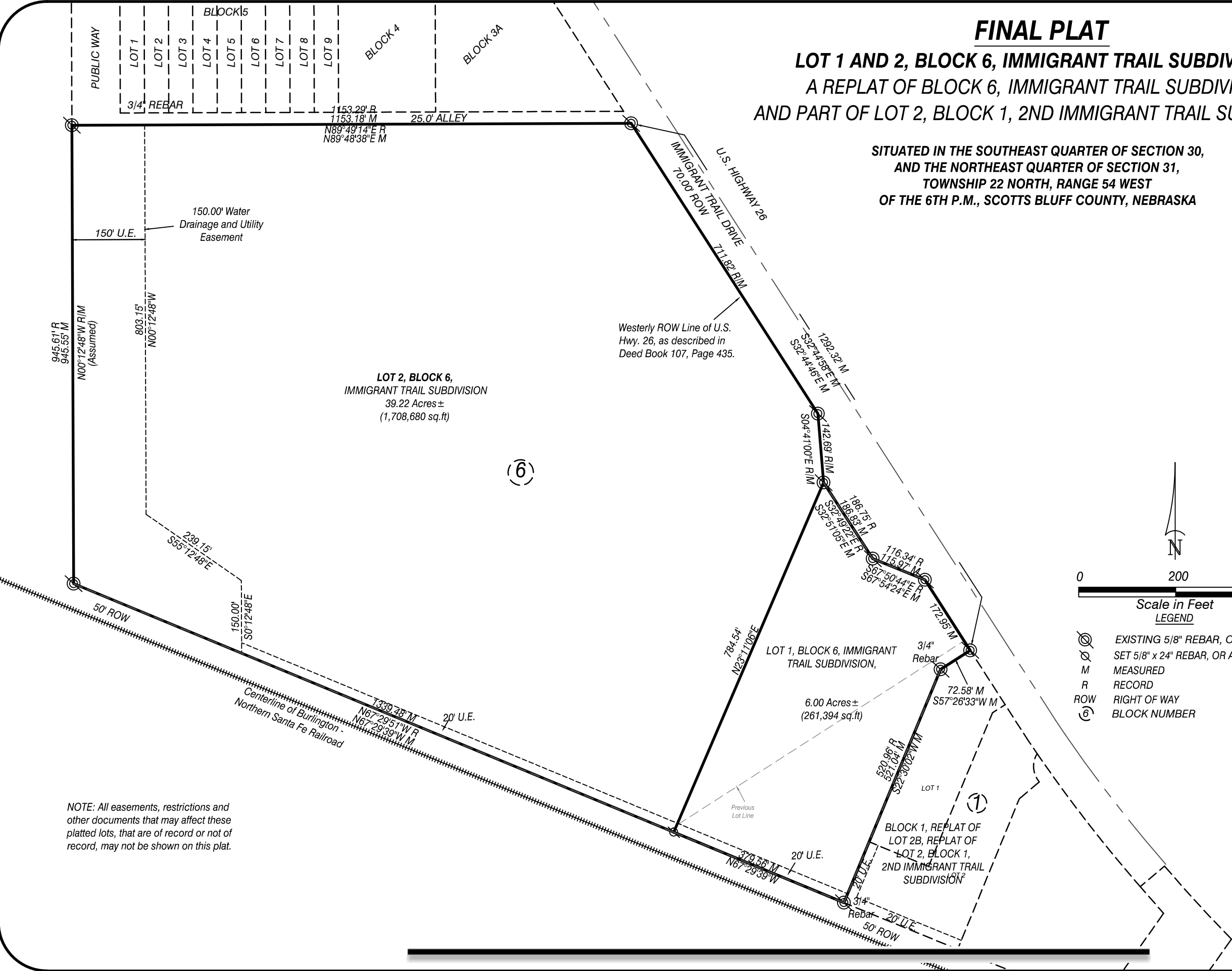
**NOTIFICATION LIST:** Yes      No x      Further Instructions ☐

**APPROVAL FOR SUBMITTAL:** \_\_\_\_\_  
City Manager

---

# **FINAL PLAT** **LOT 1 AND 2, BLOCK 6, IMMIGRANT TRAIL SUBDIVISION,** **A REPLAT OF BLOCK 6, IMMIGRANT TRAIL SUBDIVISION** **AND PART OF LOT 2, BLOCK 1, 2ND IMMIGRANT TRAIL SUBDIVISION**

SITUATED IN THE SOUTHEAST QUARTER OF SECTION 30,  
 AND THE NORTHEAST QUARTER OF SECTION 31,  
 TOWNSHIP 22 NORTH, RANGE 54 WEST  
 OF THE 6TH P.M., SCOTTS BLUFF COUNTY, NEBRASKA



NOTE: All easements, restrictions and other documents that may affect these platted lots, that are of record or not of record, may not be shown on this plat.

RESOLUTION NO. \_\_\_\_\_

BE IT RESOLVED BY THE MAYOR AND CITY COUNCIL OF THE  
CITY OF SCOTTSBLUFF, NEBRASKA:

That the final plat of Lots 1 and 2, Block 6 Immigrant Trail Subdivision, a replat of Block 6, Immigrant Trail Subdivision and part of Lot 2, Block 1, 2<sup>nd</sup> Immigrant Trail Subdivision, situated in the Southeast  $\frac{1}{4}$  of Section 30 and the Northeast  $\frac{1}{4}$  of Section 31, T22N, R54W of the 6th P.M., City of Scottsbluff, Scotts Bluff County, NE dated June 20, 2016, duly made, acknowledged and certified, is approved. Such Plat is ordered filed and recorded in the office of the Register of Deeds, Scotts Bluff County, Nebraska.

Passed and approved this 20<sup>th</sup> day of June 2016.

\_\_\_\_\_  
Mayor

Attest:

\_\_\_\_\_  
City Clerk

SEAL