

City of Scottsbluff, Nebraska

Monday, April 14, 2014

Regular Meeting

Item NewBiz1

Review Landscape Plan

Review: GGO Landscape Plan

Applicant: Reganis Auto

Owner: Tim Reganis

Location: 1117 East 27th Street

Staff Contact: Annie Folck



SCOTTSBLUFF PLANNING COMMISSION Staff Report

To: Planning Commission
From: Development Services Department
Date: April 14, 2014
Subject: Landscape Plan Review GGO Zoning District
Location: 1117 East 27th St.

Background

The Planning Commission approved a Special Use Permit to Reganis Auto at the February 10, 2014 meeting. The special use was to allow for Auto Sales in a C-2 Neighborhood and Retail Commercial zoning district. The business is also located in the Gateway Greenway Overlay zone.

The landscape plan is attached for your review. It includes groupings of trees and low maintenance plants.

RECOMMENDATION

Approve

Make a motion to approve the proposed GGO landscape plan at 1117 East 27th Street for Reganis Auto subject to the following condition(s):

Deny

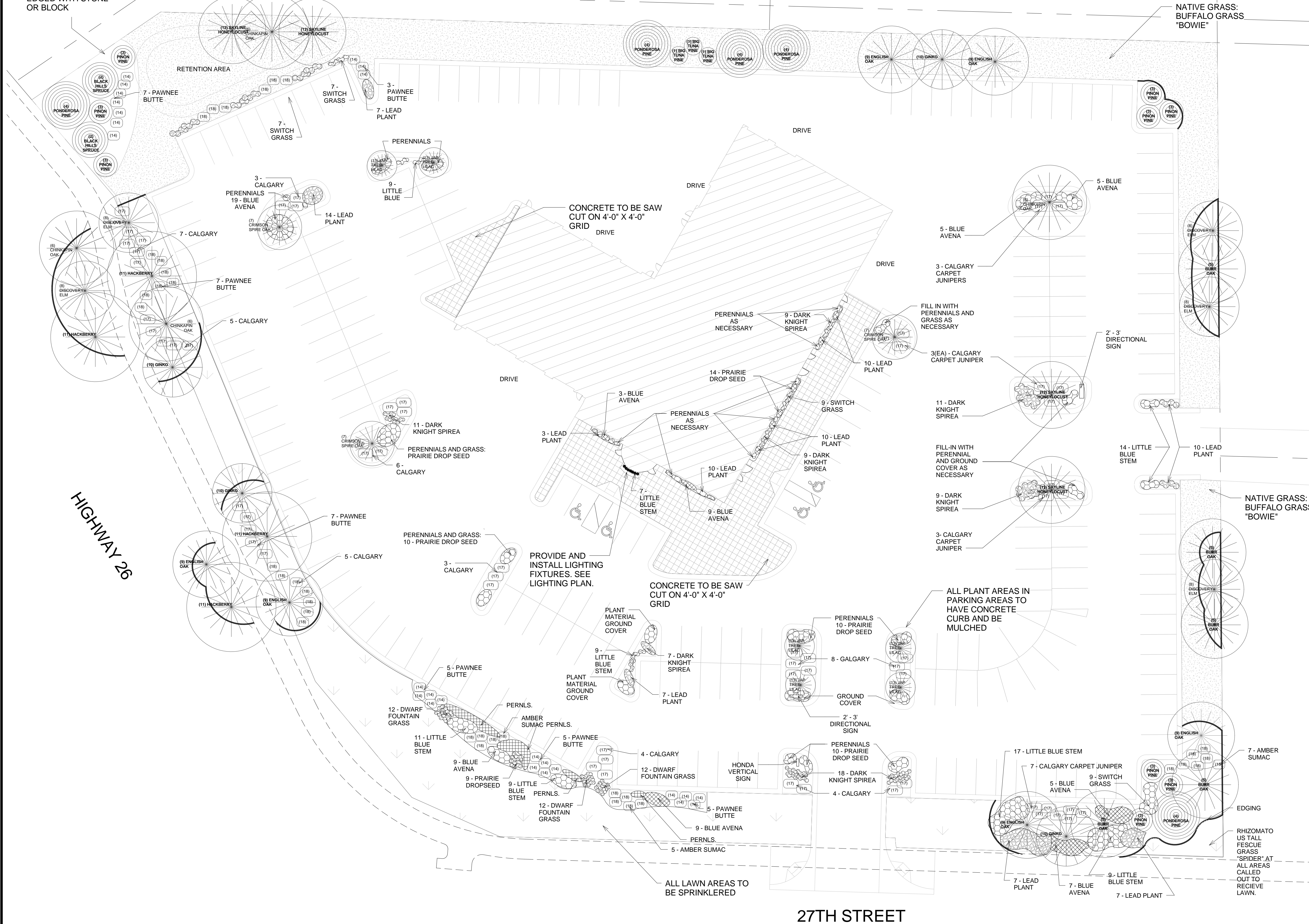
Make a motion to disapprove the proposed GGO landscape plan at 1117 East 27th St. for Reganis Auto for the following reason(s):

Table

Make the motion to TABLE the GGO landscape plan at 21117 East 27th Street for Reganis Auto for the following reason(s):

LANDSCAPE NOTES:
1. IRRIGATION: AN IRRIGATION SYSTEM SHALL BE PROVIDED AS REQUIRED FOR PROPER IRRIGATION, DEVELOPMENT AND MAINTENANCE OF THE VEGETATION. THE DESIGN OF THE SYSTEM SHALL PROVIDE ADEQUATE SUPPORT FOR THE VEGETATION SELECTED.
2. DESIGN OF SPRINKLER SYSTEM TO BE PROVIDED BY SPRINKLER INSTALLER.
3. KEEP ALL TREES A MINIMUM OF 8' AWAY FROM UTILITY LINES AND EDGES OF SIDEWALKS.

PLANT AREAS TO BE MULCHED AND EDGED WITH STONE OR BLOCK



HIGHWAY 26

27TH STREET

1 LANDSCAPE PLAN
1/32" = 1'-0"

NATIVE GRASS: BUFFALO GRASS 'BOWIE'

UTILITY EASEMENT

PLANT SCHEDULE					
IDENTIFICATION NUMBER	COMMON NAME	SCIENTIFIC NAME	HEIGHT	SPREAD	QUANTITY
1	BIG TUNA MUGO PINE	PINU SMUGO 'BIG TUNA'	12' - 15'	10' 12'	3
2	BLACK HILLS SPRUCE	PICEA GLAUCA 'DENSATA'	20' - 40'	15' - 25'	2
3	PINON PINE	PINUS EDULIS	12' - 20'	12' - 15'	9
4	PONDEROSA PINE	PINUS PONDEROSA	50' - 60'	20' - 30'	5
5	BURR OAK	QUERCUS MACROCARPA	50' - 60'	35' - 45'	9
6	CHINKAPIN OAK	QUERCUS MUEHLENBERGII	40' - 50'	40' - 50'	4
7	CRIMSON SPIRE OAK	QUERCUS X 'CRIMSHMIDT'	40' - 50'	12' - 15'	3
8	DISCOVERY ELM	ULMUS DAVIDIANA VAR. JAPONICA 'DISCOVERY'	35' - 40'	35' - 40'	5
9	ENGLISH OAK	QUERCUS ROBUR	50' - 60'	35' - 45'	6
10	GINKO	GINKO BILOBA 'AUTUMN GOLD'	40' - 50'	20'	4
11	HACKBERRY	CELTIS OCCIDENTALIS	40' - 60'	40' - 60'	4
12	SKYLINE HONEYLOCUST	GLEDITSIA TRIACANTHOS INERMIS 'SKYCOLE'	40' - 50'	35' - 45'	4
13	JAPANESE TREE LILAC	SYRINGA RETICULATA	20' - 30'	15' - 20'	6
14	PAWNEE BUTTE SANDCHERRY	PRUNUS BESSEYI (PAWNEE BUTTES)	1' - 2'	6' - 8'	32
15	DWARF LEADPLANT	AMORPHA NANA	2' - 4'	2' - 4'	71
16	DARK KNIGHT SPIREA	CARYOPTERIS X CLANDONENSIS 'DARK KNIGHT'	2' - 4'	2' - 3'	72
17	CALGARY CARPET JUNIPER	JUNIPERUS SABINA 'MONNA'	12' - 18'	6' - 10'	32
18	AUTUMN AMBER SUMAC	RHUS TRILOBATA 'AUTUMN AMBER'	6' - 18'	6' - 8'	30
APPROVED ORNAMENTAL GRASSES					
	BLUE AVENA	HELIOTOTRICHON SEMPERVIRENS	2' - 3'	2' - 4'	62
	DWARF FOUNTAIN GRASS	PENNISETUM ALOPECUROIDES 'HAZELN'	2' - 3'	2' - 3'	39
	GIANT SACATON	SPOROBOLUS WRIGHTII	5' - 7'	4' - 5'	21
	LITTLE BLUE STEM	SCHIZACHYRIUM SCOPARIUM 'THE BLUES'	2' - 3'	2' - 4'	62
	PRAIRIE DROPSSEED	SPOROBOLUS HETEROLEPIS	18" - 24"	15" - 24"	39
	SWITCH GRASS	PANICUM VIRGATUM 'HEAVY METAL'	3' - 4'	3' - 4'	41
APPROVED PERENNIALS					
COMMON NAME	SCIENTIFIC NAME		HEIGHT	QUANTITY	
BEAR TONGUE	- PENSTEMON BARBATUS 'RONDO' - PENSTEMON X MEXICALI PIKE PEAK PURPLE - PENSTEMON X MEXICALI RED ROCKS		16" 15" 18"	80 80 80	
BLACK EYED SUSAN	RUDBECKIA FULGIDA 'GOLDSTURM'		24"	80	
BLANKET FLOWER	GAILLARDIA X GRADIFLORA 'MESA BRIGHT BICOLOR'		16" - 18"	50	
CATMINT	NEPETA FAASSENII X 'WALKERS LOW'		15" - 20"	80	
CONEFLOWER	- ECHINACEA PURPUREA 'MAGNUS' - ECHINACEA PURPUREA 'ALBA' WHITE SWAN		36" 24" - 36"	60 82	
FALL ASTER	- ASTER NOVAE-ANGLIAE 'PURPLE DOME' - ASTER NOVAE-ANGLIAE 'VIBRANT DOME'		18" - 20" 18" - 20"	50 50	
GAYFEATHER	LIATRIS SPICATA 'KOBOLD'		18"	80	
HYSSOP	- AGASTACHE AURANTIACA CORONADO - AGASTACHE CANA 'SINNING' SONORAN SUNSET		15" 15"	80 80	
MEADOW SAGE	- SALVIA 'MAY NIGHT' - SALVIA NEMOROSA 'SENSATION DEEP ROSE' - SALVIA X SYLVESTRIS 'SNOW HILL'		12" - 24" 12" 14" - 16"	50 50 50	
STONECROP	SEDUM SPECTABILE 'AUTUMN JOY'		18" - 24"	80	
WORMWOOD	ARTEMISIA ARBORESCENS 'POWIS CASTLE'		24" - 36"	50	
YARROW	ACHILLEA MILLEFOLIUM 'DESERT EVE RED'		10" - 12"	60	
APPROVED GROUND COVER					
EVENING PRIMROSE	OENOTHERA FREMONTII 'SHIMMER'		10"	65	
PINKS	DIANTHUS DELTOIDES 'FLASHING LIGHT'		6"	65	
PLUMBAGO	CERATOSTIGMA PLUMBAGINOIDES		8"	65	
PURPLE POPPY MALLOW	CALLIRHOE INVOLUCRATA WINECUPS		8"	65	



Joseph R. Hewgley & Associates, Inc.
702 South Bailey • North Platte, Ne. 68101
Phone: 308/734-4083 • Fax: 308/734-4044

DESIGN PROVIDED BY ANITA GALL

COMPUTER DRAWINGS DONE BY MJH

FOR CONSTRUCTION

Reganis Dealership
for
Tim Reganis

PROJECT #: N-1513
DATE: 11/25/13
DRAWN: MJH

REVISIONS

DATE	DESCRIPTION

© 2013 COPYRIGHT JOSEPH R. HEWGLEY & ASSOCIATES, INC.



LANDSCAPE PLAN SHEET L101