



Hall County Regional Planning Commission

Wednesday, July 12, 2006
Regular Meeting

Item L1

Francis Subdivision

Francis Subdivision located east of Carleton Avenue and south of Curran Avenue. (12 lots)

Staff Contact: Chad Nabity

June 22, 2006

Dear Members of the Board:

RE: Preliminary & Final Plat – Francis Subdivision.

For reasons of Section 19-923 Revised Statutes of Nebraska, as amended, there is herewith submitted a final plat of Francis Subdivision, located East of Carleton Avenue and South of Curran Avenue, Grand Island Nebraska.

This final plat proposes to create 12 lots on a tract of land in Lots 3,4,5 And 6, Bosselman Second Subdivision in the City of Grand Island, Hall County, Nebraska. This land consists of approximately 3.697 acres.

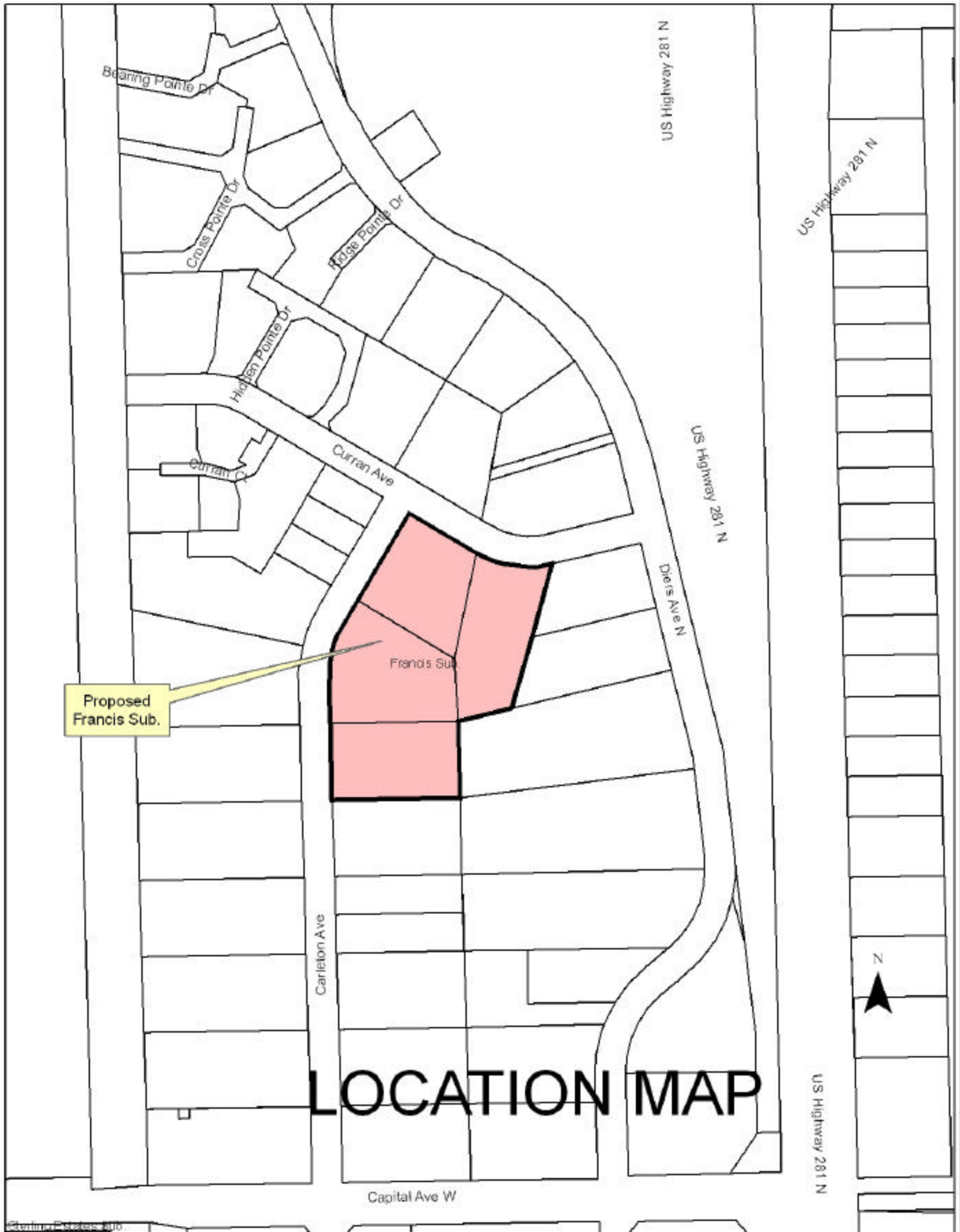
You are hereby notified that the Regional Planning Commission will consider this final plat at the next meeting that will be held at 6:00 p.m. on July 12, 2006 in the Council Chambers located in Grand Island's City Hall.

Sincerely,

Chad Nabity, AICP
Planning Director

cc: City Clerk
City Attorney
Director of Public Works
Director of Utilities
Director of Building Inspections
Manager of Postal Operations
Rockwell And Associates

This letter was sent to the following School Districts 1R, 2, 3, 8, 12, 16, 19, 82, 83, 100, 126.



Proposed Francis Sub.

LOCATION MAP

