



Hall County Regional Planning Commission

Wednesday, April 05, 2006
Regular Meeting

Item L2

Preliminary Plat Springdale Subdivision

This Preliminary Plat proposes to create 36 lots on a currently unplatted parcel of land in the SE 1/4 NE 1/4 Section 23 Township 11 Range 10, located South of Lillie Drive and West of North Road. It is recommended the Planning Commission approve and recommend the City Council approve this Preliminary Plat.

Staff Contact: Chad Nabity

March 23, 2006

Dear Members of the Board:

RE: Preliminary Plat – Springdale Subdivision.

For reasons of Section 19-923 Revised Statutes of Nebraska, as amended, there is herewith submitted a preliminary plat of Springdale Subdivision, located South of Lillie Drive and West of North Road.

This preliminary plat proposes to create 36 lots on a parcel of land in the SE ¼ NE ¼ 23-11-10. This land consists of approximately 14.229 acres.

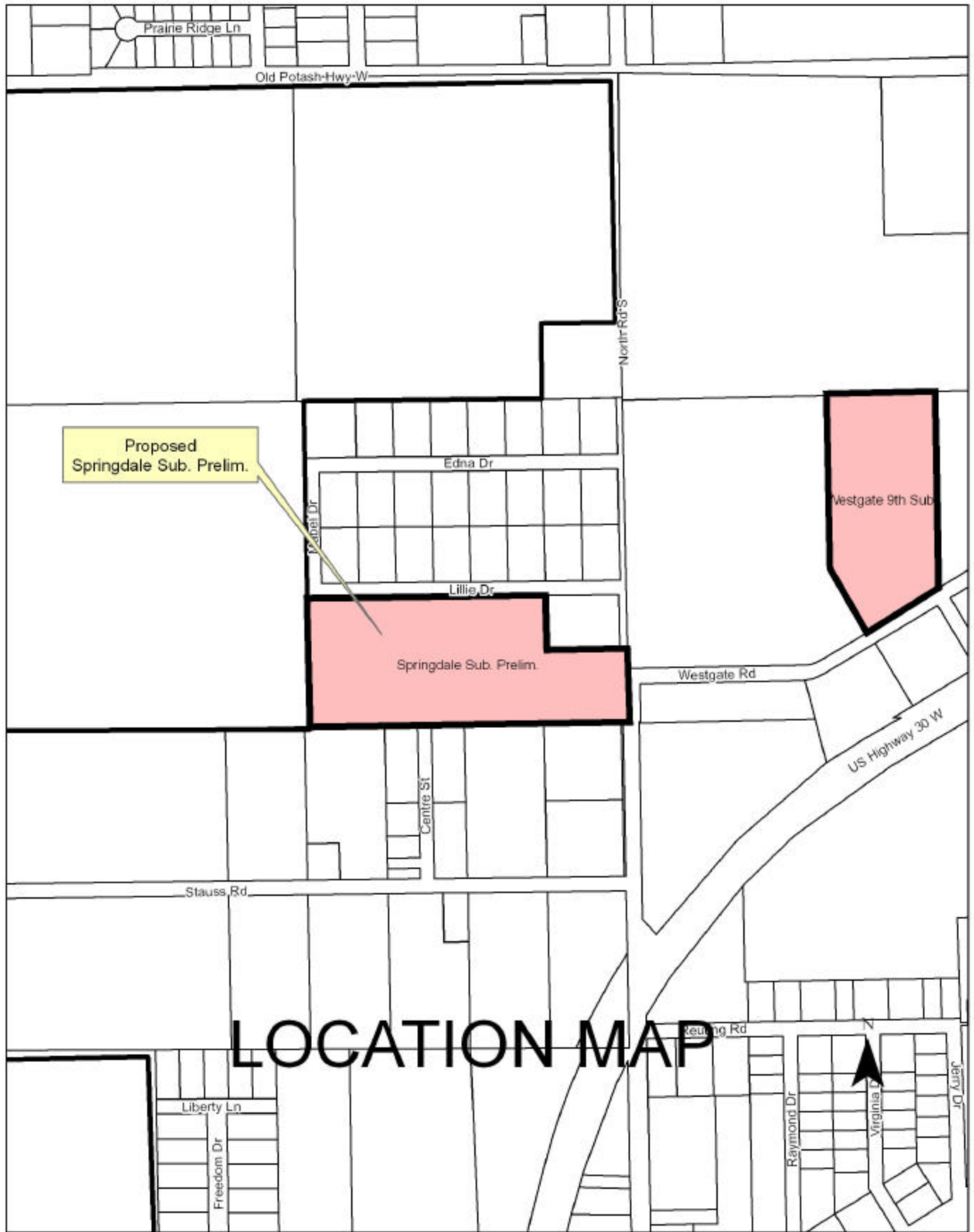
You are hereby notified that the Regional Planning Commission will consider this preliminary plat at the next meeting that will be held at 6:00 p.m. on February 1, 2006 in the Council Chambers located in Grand Island's City Hall.

Sincerely,

Chad Nabity, AICP
Planning Director

cc: City Clerk
City Attorney
Director of Public Works
Director of Utilities
Director of Building Inspections
Manager of Postal Operations
Rockwell & Associates

This letter was sent to the following School Districts 1R, 2, 3, 8, 12, 16, 19, 82, 83, 100, 126.



Proposed
Springdale Sub. Prelim.

Springdale Sub. Prelim.

Westgate 9th Sub.

LOCATION MAP