



Hall County Regional Planning Commission

Wednesday, February 01, 2006
Regular Meeting

Item M5

Final Plat Logan's Subdivision

This Final Plat proposes to create 1 lot on a currently unplatted parcel of land in the NE 1/4 Section 34 Township 11 Range 09, located Soth of Hwy 34 and East of Stuhr Road. This land consists of approximately 1.93 acres. It is recommended the Planning Commission approve and recommend the City Council and County Board approve this Final Plat.

Staff Contact: Chad Nabity

January 19, 2006

Dear Members of the Board:

RE: Final Plat – Logan’s Subdivision

For reasons of Section 19-923 Revised Statutes of Nebraska, as amended, there is herewith submitted a final plat of Logan’s Subdivision, located South of Hwy 34 and East of Stuhr Rd. Hall County within Grand Island 2 mile jurisdiction.

This final plat proposes to create 1 lot on a parcel of land in the NE ¼ 34-11-09. This land consists of approximately 1.93 acres.

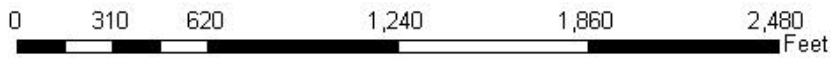
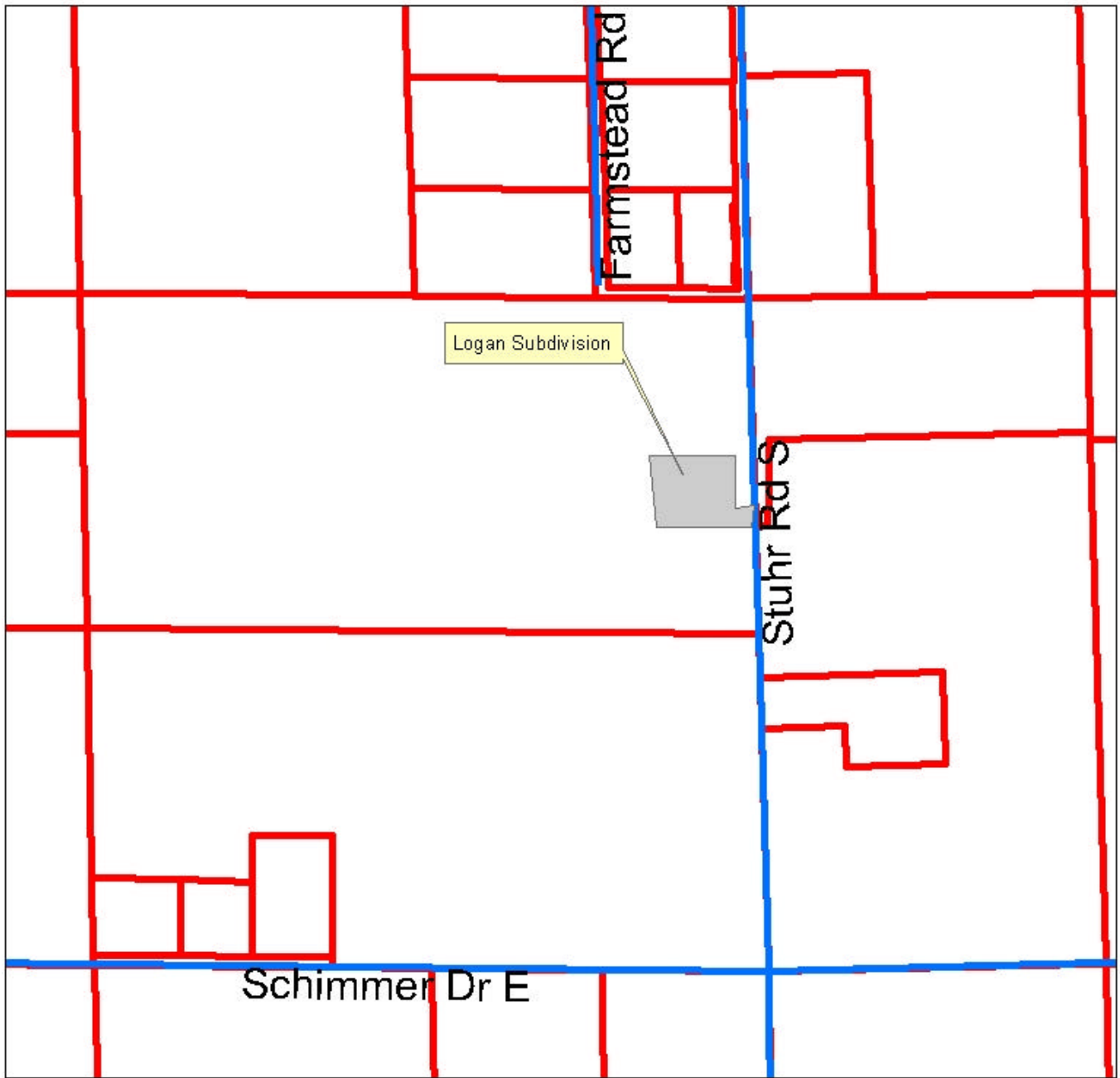
You are hereby notified that the Regional Planning Commission will consider this final plat at the next meeting that will be held at 6:00 p.m. on February 1, 2006 in the Council Chambers located in Grand Island's City Hall.

Sincerely,

Chad Nabity, AICP
Planning Director

cc: County Clerk
County Attorney
County Public Works
County Building
City Clerk
City Attorney
Director of Public Works
Director of Utilities
Director of Building Inspections
Manager of Postal Operations
Olsson Associates

This letter was sent to the following School Districts 1R, 2, 3, 8, 12, 16, 19, 82, 83, 100, 126.



Aproximate Location of Logan Subdivision
Hall County Regional Planning Department
Chad Naby 1-19-06

