



# **City of Grand Island**

**Tuesday, February 02, 2010**

**Study Session**

## **Item -2**

### **Presentation Concerning College Street Closing**

**Staff Contact: Steve Joel, Superintendent of Schools**

# **Council Agenda Memo**

**From:** Jeff Pederson, City Administrator  
**Meeting:** February 2, 2010  
**Subject:** College Street Closing  
**Item #'s:** 2  
**Presenter(s):** Steve Joel, Superintendent of Schools

## **Background**

The Grand Island School Board has developed a Plan for site improvements around GI Senior High that would encompass the closing of College Street between Custer and Lafayette Avenues. The Plan includes site enhancements that increase pedestrian safety as well as improved access to campus facilities.

## **Discussion**

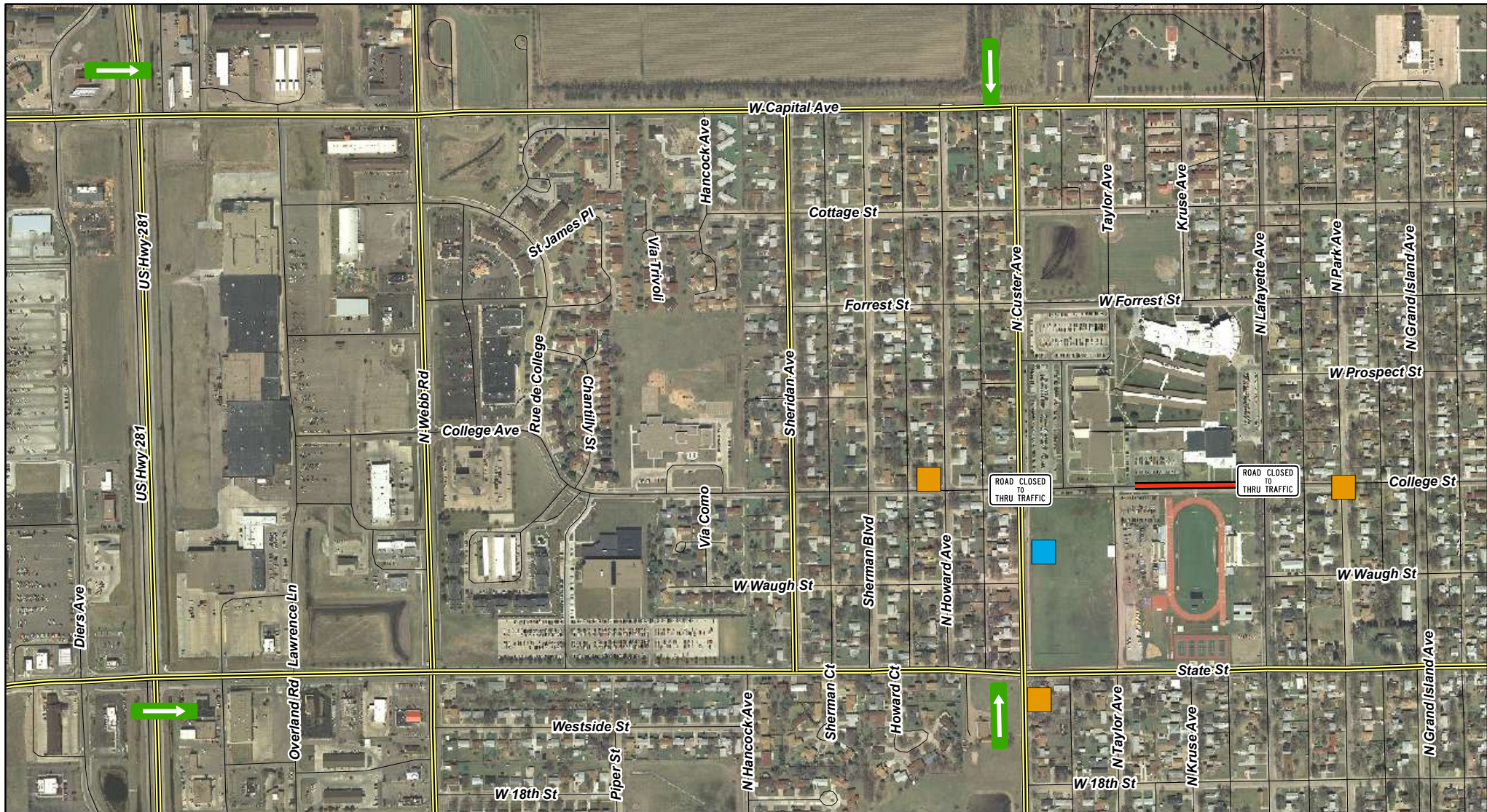
School Officials will be accompanied by Terry Brown of Olsson & Associates to outline the Plan as well as to request permission for a temporary around-the-clock closing of College Street that is intended to gauge the potential impacts of a permanent closing.

## **Conclusion**

This item is presented to the City Council in a Study Session to allow for any questions to be answered and to create a greater understanding of the issue at hand.

It is the intent of City Administration to bring this issue to a future council meeting.

# SIGN LOCATION MAP



## Legend



ROAD CLOSED



SIGN TO READ: COLLEGE STREET CLOSED TO THRU TRAFFIC; SENIOR HIGH PARKING ONLY TURN RIGHT



SIGN TO READ: COLLEGE STREET CLOSED TO THRU TRAFFIC; USE STATE STREET



DIRECTIONAL SIGN (GRAND ISLAND SENIOR HIGH)



ROAD CLOSING



# GATE LOCATION MAP



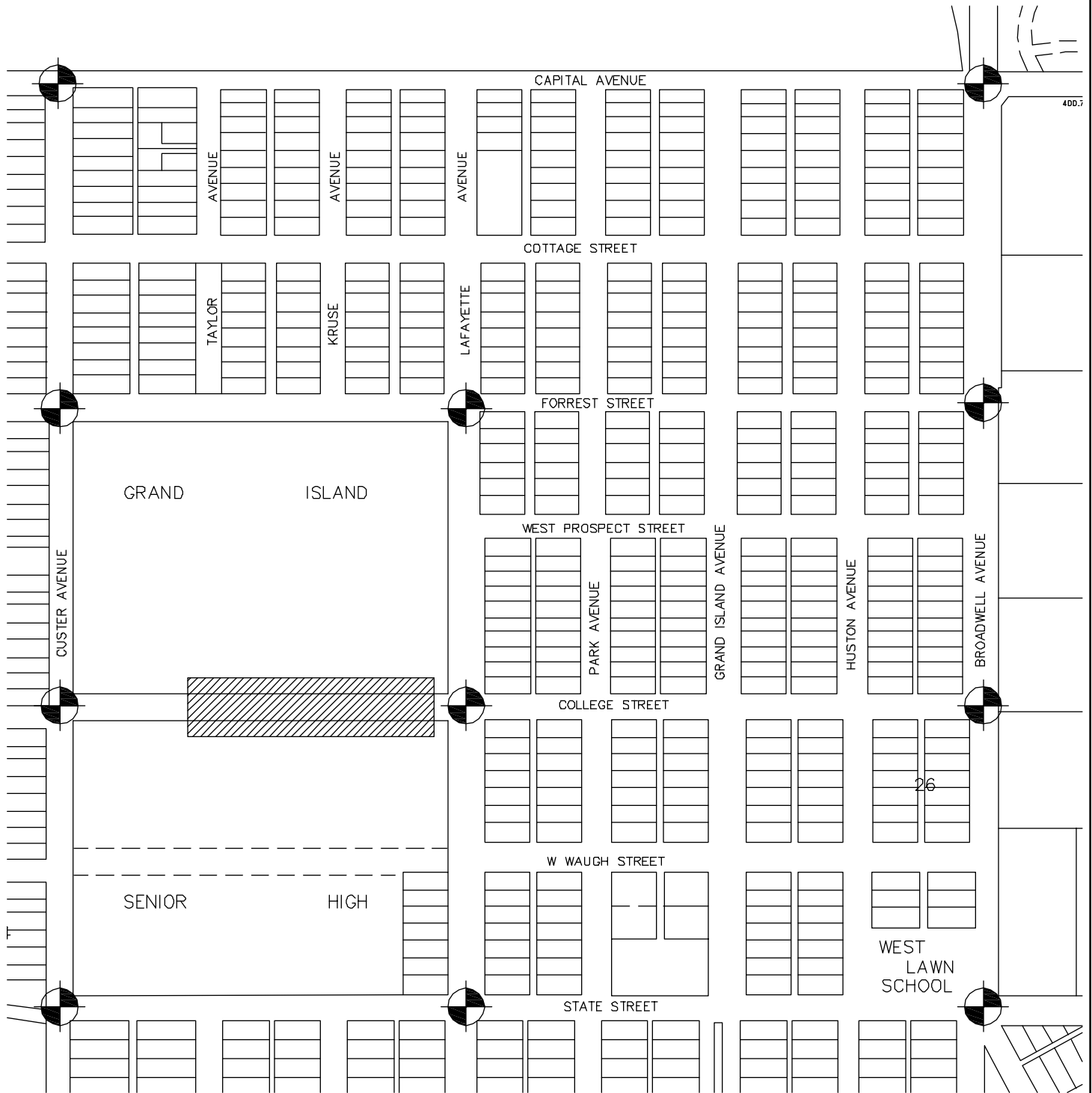
## Legend

 ROAD CLOSING

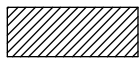
 GATE / ROAD BLOCK

# TRAFFIC COUNT LOCATIONS

DWG: F:\Projects\009-0622\_IDVP\MasterXrefs\TrafficCountMap.DWG  
 DATE: Jan 29, 2010 8:53am  
 USER: gsmith  
 XREFS:



## LEGEND



PROPOSED CLOSURE



TURN MOVEMENT COUNT LOCATION

PROJECT NO: 2009-0622

DRAWN BY: GKS

DATE: 01/29/10

## COLLEGE STREET TRAFFIC STUDY

**MOLSSON**  
ASSOCIATES

201 East 2nd Street  
 P.O. Box 1072  
 Grand Island, NE 68802-1072  
 TEL 308.384.8750  
 FAX 308.384.8752

EXHIBIT

1



