
Technical Advisory Committee

Monday, June 29, 2015

Regular Session

Item J1

Journey 2040 Workshop Overview Presentation

Staff Contact: John Adams, MPO Program Manager

Journey 2040

Workshop No. 1
Monday, June 29, 2015
Bosselman Conf. Cntr.

@GIPublicWorks #JOURNEY2040PLAN
Facebook.com/GI.PublicWorks

Today's Workshop

- Welcome
- Introductions
- Project overview
- Learning from you
- Next steps
- Adjourn



Journey
2040

What is the MPO?

- The Grand Island Area MPO is a federally mandated policy-making and planning body to coordinate transportation decisions
- Federal law requires a regional, coordinated process for transportation planning

The logo for "Journey 2040" is located in the bottom right corner of the slide. It features the word "Journey" in a blue, sans-serif font, with the year "2040" in a bold, yellow, sans-serif font directly below it. The logo is positioned over a yellow and blue geometric background element.

What's the Journey 2040 Plan?

- First MPO project
- Recommended by Grow Grand Island
- **Long-range transportation plan** to identify investments to improve the condition and performance of the transportation system
- Plan due late March, 2016
- Public involvement through-out the process

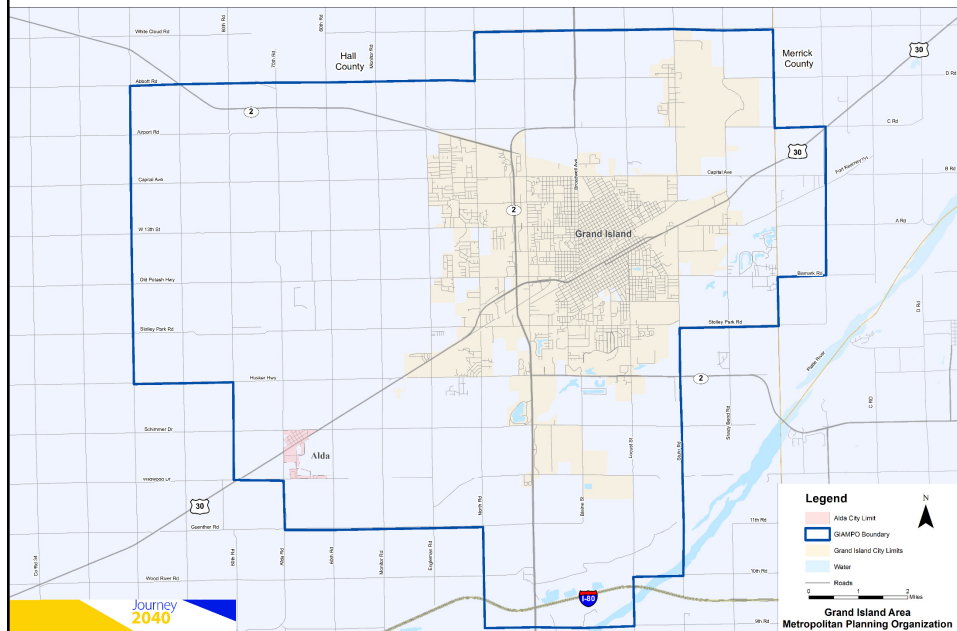
The logo for "Journey 2040" is located in the bottom right corner of the slide. It features the word "Journey" in a blue, sans-serif font, with the year "2040" in a bold, yellow, sans-serif font directly below it. The logo is positioned over a yellow and blue geometric background element.

Key Things to Do

- Identify transportation needs over the next 25 years
- Develop goals and prioritize projects
- Estimate costs and revenues available
- Build the technical tools to achieve these three items

Journey
2040

Study Area



Required Planning Factors

- Moving Ahead for Progress in the 21st Century (aka MAP 21 surface transportation law)
 - Safety
 - Security
 - Accessibility and mobility
 - Environmental areas, energy conservation, quality of life
 - Integration and connectivity
 - Management and operations
 - Preservation

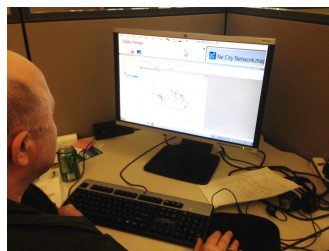
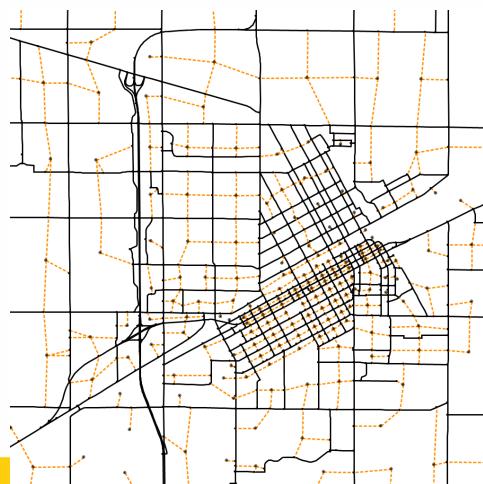
Journey
2040

Goals

- **Goal 1:** Provide accessibility and improve mobility to destinations for all population groups
- **Goal 2:** Increase safety and security
- **Goal 3:** Protect the environment and preserve important natural assets
- **Goal 4:** Further the health, safety, and well-being of all residents in the region

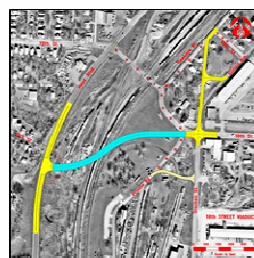
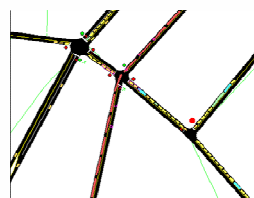
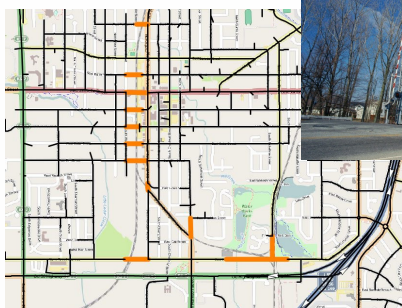
Journey
2040

Travel Model



Journey
2040

Railroad Considerations



Journey
2040

Transit

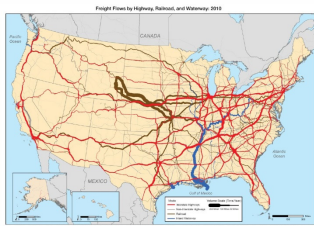


Bicycle & Pedestrian



2040

Freight

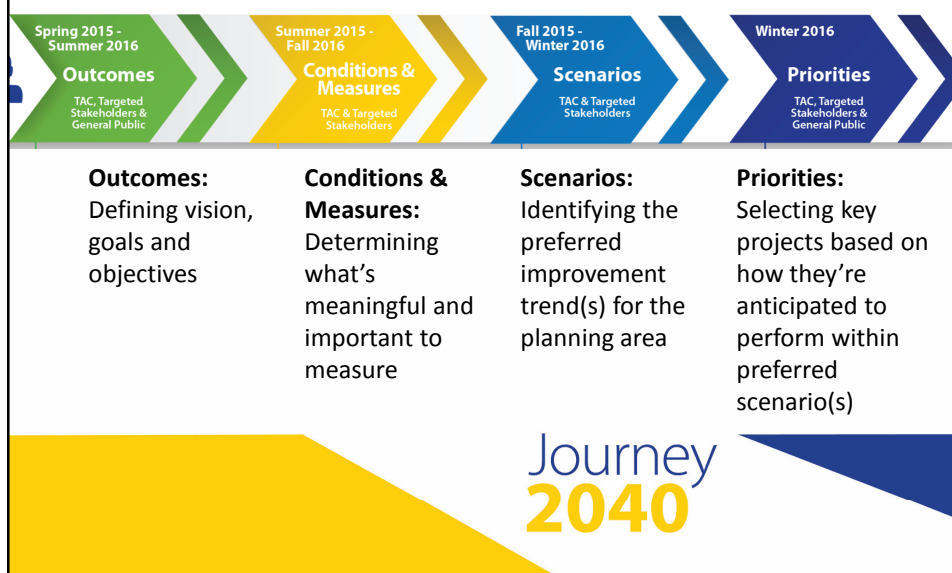


Aviation



2040

What's the Process & Schedule?



Final Outcomes?

- **GIAMPO Policy Board** adopts Journey 2040 planning document
- City includes Journey 2040 projects within its **capital improvements program**
- GIAMPO coordinates regional transportation **planning and implementation** in relationship to adopted plan

Journey 2040

We Want to Learn from You

journey2040.digicate.com

- Biggest **issues** affecting travel
- Most important types of **improvement strategies**
- Priority **needs**



Journey
2040

Biggest Issues

journey2040.digicate.com

**REPLACE WITH 6/27
SURVEY GRAPH**

Journey
2040

Improvement Strategies

journey2040.digicate.com

**REPLACE WITH 6/27
SURVEY GRAPH**

Journey
2040

Prioritized Needs

journey2040.digicate.com

**REPLACE WITH 6/27
SURVEY GRAPH**

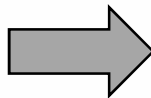
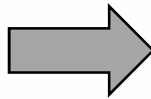
Journey
2040

Today's Small Group Discussion

- What's your vision for our transportation future?
- Where are the important destinations?
- How would you like to travel to them?
- What improvements should happen first?
- What's the biggest travel issue?
- What's the No. 1 thing to accomplish?

Journey
2040

Small Group Instructions



Journey
2040

What's Next?

| Timing | Activity |
|---------------------------|---|
| Now – Winter 2016 | Referencing and applying your feedback |
| Summer 2015 – Winter 2016 | Technical Adv. Comm. and transportation stakeholder workshops |
| Winter 2016 | Second and final community workshop |
| Spring 2016 | Final JOURNEY 2040 Plan |



Journey
2040

Questions/Comments?

- Please:
 - **Contact** John Adams, GIAMPO Program Manager at 308-389-0262 and johna@grand-island.com
 - **Visit** the GIAMPO web page at grand-island.com/GIAMPO
 - **Comment online** at journey2040.digicate.com through July 31, 2015
 - **Follow us** @GIPublicWorks #JOURNEY2040PLAN
 - **Like us** on facebook.com/GI.PublicWorks



Journey
2040