



# **City of Grand Island**

**Tuesday, January 04, 2005**

**Study Session**

## **Item -1**

**Presentation for Household Hazardous Waste Grant Funds**

**Staff Contact: Paul Bresino**

# **Council Agenda Memo**

**From:** Paul M. Briseno, Assistant to the City Administrator

**Meeting:** January 4, 2005

**Subject:** Household Hazardous Waste Facility

**Item #'s:** 2

**Presenter(s):** Paul M. Briseno, Assistant to the City Administrator  
Betty Curtis, Executive Director GIACCS  
Joni Kuzma, Development Specialist

## **Background**

At the February 2004 City Council retreat, the Grand Island City Council identified development of a permanent, regional Household Hazardous Waste (HHW) facility as a community goal. The need was based on public health issues in and around the area.

## **Discussion**

The City of Grand Island continues to grow and consequently, the population increase results in the generation of more household hazardous waste. According to the Department of Environmental Quality, an average single household can produce 20 pounds of household hazardous waste a year. A growing population combined with the mounting list of household hazardous materials and chemicals identified as hazardous by the federal government and banned from landfills; indicate a need for a permanent facility. The need has become more important based on these issues as well as the mass production, purchase, and storage of these dangerous materials throughout our community.

One-day household hazardous waste collection events, coordinated by the Clean Community System, provide a limited, but valuable disposal option to a portion of the Grand Island and Central Nebraska population. However, one-day events only capture a small portion of the HHW in the community and attendance can be hampered by a variety of external circumstances.

Last year, one-day HHW collection events in Grand Island and Central Nebraska provided the benefit of diverting 113,815 pounds of household hazardous waste from the

landfill. This represented HHW from 1.8% of central Nebraska's population. This diversion of HHW from the landfill saved residents and the environment from the effects of improper disposal of household hazardous waste. In addition, many of these toxic items were either recycled or disposed of appropriately. Safety for the environment, households, fire fighters and communities increased as well through a decreased risk of explosion, fire, burns and other injury to residents, fire personnel and community members.

Although Grand Island Area Clean Community System was successful in collecting household hazardous waste from 1.8% of the central Nebraska population there is still 98.2% of the population from whom HHW is uncollected. A permanent, accessible Household Hazardous Waste & Recycling facility, associated with the City of Grand Island transfer station, will provide more households an opportunity to properly dispose of their hazardous waste. As stated, although one-day collections events have been successful, participation in one-day events is limited and restrictive. A permanent facility with set hours, clear guidelines and trained professionals will encourage long-term, sustained disposal efforts.

## **Alternatives**

Since this is a study session, the Council is being asked to consider this information for discussion purposes only. No decision is being requested regarding the subject at hand at this time. Therefore, the City Council is asked to engage in discussion concerning the issue to facilitate further decision making steps.

Operation Plan  
for  
The Central Nebraska Household Hazardous Waste Collection Facility  
Grand Island, Nebraska

Presented By:

Paul M. Briseno  
Assistant to the City Administrator for the City of Grand Island

Betty Curtis  
Executive Director for the Grand Island Area Clean Community System

Joni Kuzma  
Development Specialist for the City of Grand Island

Thursday, December 30, 2004

The content of this report is confidential and is the sole property of the City of Grand Island Central Nebraska Household Hazardous Waste Collection Facility. Its use is strictly limited to those readers authorized by the Facility. Any reproduction or divulgence of the content of this report without the written consent of the Municipality is prohibited.

# Central Nebraska Household Hazardous Waste Collection Facility

## TABLE OF CONTENTS

Financing Proposal Summary.....	3
Executive Summary.....	5
Business Concept .....	5
Facility Description.....	8
Facility Name and Location.....	8
History of Household Hazardous Waste Collection Events .....	8
Facility Concept .....	8
Market and Target Group.....	9
Operation Plan.....	10
Description of Operations.....	10
Management Profile.....	11
Financial Profile.....	12
Industry Analysis.....	13
Industry Description.....	13
Industry Competition.....	13
Industry Growth and Projections.....	14
Market Analysis.....	15
Target Market Description.....	15
Participation Forecast.....	16
Financial Plan.....	17
Historical Analysis.....	17
Financial Projections.....	18
Timeline.....	22
Appendixes.....	23

# Central Nebraska Household Hazardous Waste Collection Facility

## FINANCING PROPOSAL SUMMARY

### Amount and Type of Financing Needed

The Central Nebraska HHW Collection Facility is requesting the following financial support:

1. \$150,000 for Architectural and Engineering design – February 1, 2005  
Department of Environmental Quality grant: \$150,000
2. \$1,045,000 for facility construction – September 2005  
Environmental Trust Fund Grant: \$783,750 (75% of total)  
City of Grand Island: 25% Match (\$261,250)
- 3a. Operations Grant (\$320,300 annually) - September 2005  
Department of Environmental Quality grant: \$240,225  
Fees from participating Communities: \$80,075.00

A five year operational grant will be requested from the Department of Environmental Quality. Matching operating funds may be provided from participating communities.

3b. Long-term operations funding

If long-term operational grant funding is not available from the Nebraska Environmental Trust, the City of Grand Island will seek other funding sources.

### Use of Proposed Financing

The Central Nebraska HHW Collection Facility is proposed for construction adjacent to the City of Grand Island Transfer Station located at 5050 West Old Potash Road. Construction costs are estimated to be **\$1,045,000**. The facility will only accept HOUSEHOLD hazardous waste (HHW) to maintain status as a small quantity generator.

A grant application will be submitted to the Department of Environmental Quality (DEQ) to procure an Architectural and Engineering firm to create a design and construction plan for a permanent facility. A second grant application will be submitted to the Environmental Trust to fund the cost of construction.

A grant application will be submitted to the DEQ for operations after construction to fund annual operations for the first five years. A match may be provided and could come from a **\$0.50 per capita fee** from communities who will use the Facility. (Table 11, pages 20-21)

## Central Nebraska Household Hazardous Waste Collection Facility

Proposed financial statements for the Central Nebraska HHW Collection Facility including construction costs, operational costs and purchase of satellite stations as the operation grows can be viewed in Tables 9, 10, 11 and 12 on pages 20 through 22.

# Central Nebraska Household Hazardous Waste Collection Facility

## EXECUTIVE SUMMARY

### Business Concept & Mission Statement

The Grand Island Area Clean Community System has coordinated numerous HHW one day collection events in many communities and counties throughout South Central, Central and Northern Nebraska since 1998. HHW can include a number of materials found within households and may include:

Cleaning Products	Pool Chemicals
Pesticides/Herbicides	Lead Acid Batteries
Automotive Products	Cyanide
Florescent Bulbs	Pain/Paint Related Materials
Mercury/Mercury Related Materials	Lawn/Garden Chemicals
Arsenic	Aerosols
Lithium/Nickel Cadmium Batteries	Acids
Fuel	
Computers, televisions and other electronics as bans become effective	

Until 1998, when the Grand Island Area Clean Community System created one day collection events for HHW with contracted communities, there had been no disposal source for most of rural Nebraska. An estimated **350,000** residents live in the Clean Community System service area. The service area includes 29 Nebraska counties from Blaine County east to Washington County and from Phelps County north to Boyd County.

According to the United States Census Bureau, the Nebraska 2000 Census states that the Nebraska average household contains **2.49** residents. Based on a **350,000** person service area population, at **2.49** residents per household, there are an estimated **141,000** households in central Nebraska. On average, a single household can create **20** pounds of HHW a year (DEQ, 2004). Using these numbers, the service area of a Central Nebraska HHW Collection Facility could create **2,820,000** pounds of HHW a year.

$$\frac{350,000 \text{ service area population}}{2.49 \text{ residents per household}} = 141,000 \text{ households}$$

$$141,000 \text{ households} \times 20 \text{ lbs of HHW annually} = 2,820,000 \text{ lbs a year!!!}$$

Most residents of the service area currently have two means of disposal:

1. They can store HHW in their home until the community can contract with Grand Island Area Clean Community System to hold a one day HHW collection event. If the community is not able to hold a one day event, hazardous materials must be stored until an event is held.
2. They may dispose of the materials improperly by pouring the products down a household drain, dumping it in a storm sewer drain, pouring it onto the ground, or



## Central Nebraska Household Hazardous Waste Collection Facility

throwing it away in the trash. Each of these means of disposal can have adverse effects on the health of residents and the environment.

- a. Pouring HHW down drains can potentially contaminate a waste water treatment plant.
- b. Dumping HHW on the ground could contaminate ground water and the drinking supply.
- c. Throwing HHW in the trash can contaminate a landfill and potentially contaminate the land and aquifers.
- d. Any of the above can harm residents

Some HHW materials in the Grand Island Area Clean Community System service area have already been collected, recycled or disposed of properly, but the total area population compared to actual number of participating residents, shows there is a large amount of HHW uncollected as well. The Clean Community System has provided a valuable service to Nebraska communities and counties through grants provided by the DEQ and with support from communities, including the City of Grand Island.

The need for a permanent facility has become more important based on the growing list of household hazardous materials and chemicals identified as hazardous by the federal government and banned from landfills. The one-day collection events coordinated by the Clean Community System provide a limited, but valuable disposal option to a portion of the Nebraska population.

Based on input gathered from other HHW facilities in Nebraska and Iowa, permanent facilities will **COMPLEMENT AND EVENTUALLY REPLACE** one-day collection events. The cost per pound for disposal of HHW decreases with the use of a permanent facility. However, the change from one day collection events to a year-round collection facility will require an educational process. The financial section of this operational plan compares the costs of a permanent facility versus the cost of one-day collection events. (Appendix E Pages 27 through 31)

Data from Clean Community System one-day collection events for the past six years is collected and analyzed below. The data support the need for a permanent facility in central Nebraska. The following results reflect statistics from 2003 Grand Island Area Clean Community System one day collection events with contracted communities.

**TABLE 1.**

	Paint & Related Materials	Corrosive liquid	Pesticides	Oxidizing Substances	Computers	Lead Acid Batteries	Oil	Total Pounds of Collected HHW	#of Households Participating	Average lb from participating hh
Total lbs	52,500	1,490	12,300	300	4,350	35,200	7,675	113,815	2,490	46
										% of hh participating in central Nebraska 1.80%
In the Grand Island Area Clean	A detailed report of Grand Island Area Clean Community System 1999 – 2003 one day household hazardous waste collection data can be viewed in <b>Appendix A</b>									2003, Island

## Central Nebraska Household Hazardous Waste Collection Facility

Community System collected **113,815** pounds of HHW from **2,490** households in contracted communities during one-day collection events. **The Grand Island Area Clean Community System was able to collect HHW from 1.80% of Central Nebraska (based on 350,000 Central Neb. Population and the 2000 Census 2.49 average per household in Neb.).** Disposal of unusable or toxic materials was facilitated at each event by qualified hazardous waste professionals.

One day collection events provided the community benefit of diverting **113,815** pounds of HHW from the landfill, saving residents and the environment from the effects of improper disposal and either recycling or disposing of unused toxic items. Safety for the environment, households, fire fighters and communities increased as well. In addition, risk of explosion, fire, burns and other injury to residents, fire personnel and community members was decreased.

The following table reflects data collected from one-day HHW collections over the past six years. *The Grand Island Clean Community System has collected a total of 507,275 pound of HHW from 9,540 households in those six years.* This equates to 53.17 pounds per household, which is greater than the DEQ average estimate of 20 pounds per household.

**TABLE 2.**

Paint & Related Materials	Corrosive liquid	Pesticides	Oxidizing Substances	Computers	Lead Acid Batteries	Oil	Total Pounds of Collected HHW	#of Households Participating	Average lb collected per hh
231,572	10,724	42,551	531	28,000	103,775	90,122	507,275	9,540	53.17
							101455 average per year lb collected	1908 average per year hh participating	1.38% Average % of hh participating from Central Nebraska

A detailed report of Grand Island Area Clean Community System 1999– 2003 one day household hazardous waste collection data can be viewed in **Appendix A**

The City of Grand Island is proposing to construct the Central Nebraska HHW Collection Facility adjacent to the City of Grand Island's Transfer Station. This permanent facility would be accessible to residents in the Grand Island Nebraska service area, have regular business hours for collection of HHW and be operated by trained professionals.

HHW will be collected during regular business hours on specific days of the week, sorted and recycled or prepared for disposal. Shipment for disposal will take place approximately six times annually. The City will contract with a certified disposal firm to remove material when appropriate. This Facility will only be a collections facility for households to maintain a conditionally exempt status as a small quantity generator as defined in Title 128 – Department of Environmental Quality Chapter 8 – SPECIAL REQUIREMENTS FOR HAZARDOUS WASTES GENERATED BY CONDITIONALLY EXEMPT SMALL QUANTITY GENERATORS.

# Central Nebraska Household Hazardous Waste Collection Facility

## FACILITY DESCRIPTION

### Facility Name and Location

Proposed Name: Central Nebraska Household Hazardous Waste Collection Facility  
Legal Name: The City of Grand Island Central Nebraska Household Hazardous Waste Collection Facility  
Location: 5200 West Old Potash Highway  
Grand Island, Nebraska 68803  
Telephone: (308) 385-5444  
Fax: (308) 385-5486  
Contact Persons: Paul M. Briseno  
Betty Curtis  
Joni Kuzma

### History of Household Hazardous Waste Collection Events

The Grand Island Clean Community System has played an integral role in the facilitation of HHW disposal in central, northern and south central Nebraska since 1998. The Clean Community System is a strong partner with the DEQ and area communities and counties. Grant funds from the DEQ have partially funded each household hazardous collection event, as well as education efforts associated with each collection.

HHW collections are consistent with the priorities of the DEQ. In addition, these collections promote the Clean Community System mission of generating public participation, solving environmental problems, educating and instilling awareness of environmental litter and to promote a sense of pride in the community.

The efforts of the Clean Community System have resulted in collections of *507,275 pounds* of HHW. These HHW collection events enabled community and county residents to dispose of potentially hazardous chemicals and materials safely and appropriately. Disposal of unusable or toxic materials was facilitated at each event by qualified hazardous waste professionals.

### Facility Concept

The facility concept of a Central Nebraska HHW Collection Facility is derived from a needs assessment based on data from the past six years of Clean Community System waste collection events (Appendix A). The proposed facility size is based on current 2000 Census population numbers with predictions of yearly population growth for the Clean Community System service area. Population growth, combined with the average amount of HHW stored and purchased by that growing population, suggests the importance of sizing a permanent HHW facility to meet the disposal needs of the service area.

Verbal reports from fire response personnel and county road crews indicate that much of the HHW in central Nebraska is either stored or discarded inappropriately. Fire response personnel report increased risk due to inappropriate storage. County road crews

## Central Nebraska Household Hazardous Waste Collection Facility

and area residents report findings of hazardous materials in county ditches. The Central District Health Department reported calls regarding 378 nuisance issues this year, a large number of which involved inappropriate disposal of hazardous materials.

Alternatives for disposal of HHW materials are limited in Nebraska. The two existing HHW collection facilities in the state (Red Willow County and Omaha) do not accept HHW from the Grand Island service area. Even the availability of a one day collection event does not ensure adequate disposal opportunities. ***A dedicated, permanent HHW facility would ensure safe and proper disposal availability on a regular, sustained basis.***

A permanent HHW facility will provide more households an opportunity to properly dispose of their hazardous waste. Although one-day collection events have been successful, participation in one-day HHW collection events is limited and restrictive. A permanent facility with set hours, clear guidelines and trained professionals will encourage long-term, sustained disposal efforts.

### Market and Target Group

The Central Nebraska HHW Collection Facility will be located adjacent to the City of Grand Island Transfer Station, a location that will target and serve the Grand Island service area. There are some communities in outlying areas in the state for whom transporting hazardous materials is cost-prohibitive. In this instance, a satellite facility could be established and materials collected at that site, for transportation to the permanent facility by trained staff.

Over the past six years, the Grand Island Area Clean Community System has contracted and provided HHW services for **27 Nebraska** counties, cities and villages with HHW collection days. Below is a list of counties who have participated in Clean Community System HHW collection days. These communities and counties will be targeted for participation in the permanent facility. In addition, the map shows the two existing HHW facilities in pink (ILLUSTRATION 1).

#### ILLUSTRATION 1.



As previously stated, in 2003 the Grand Island Area Clean Community System collected HHW from 2,490 Nebraska households. This number is expected to increase as more recycling education material is distributed to residents about chemicals and materials deemed to be hazardous waste.

Clean Community System data identifies the largest participating age group in HHW collection days as those “**51 and over**”. Residents between “**25 and 40 years of age**” comprise the other priority target audience for participation in the HHW facility. However, maintaining participation from the “**51 and over**” age group will also be facility priority. A list of participating age groups and their results can be viewed in Appendix C or within the Market Analysis located on pages 16 and 26 of this document.

# Central Nebraska Household Hazardous Waste Collection Facility

## OPERATION PLAN

### Description of Operations

The Environmental Protection Agency through the Nebraska DEQ is committed to creating a cleaner America by making HHW changes. Many items can no longer be manufactured. Other items can no longer be sold in retail outlets. In addition, there are increasing numbers of household chemicals that are banned from landfills. These changes have increased the need for a permanent HHW facility in the Grand Island and Clean Community System service area.

The City of Grand Island and the Grand Island Area Clean Community System have partnered over the past 12 years in education projects and environmental promotions. The City recognizes the importance of a clean and safe community and funds a portion of the Clean Community System annual budget. Six years ago, the Clean Community System began the coordination of HHW collection events. Executive Director, Betty Curtis, has coordinated more than one hundred one-day HHW events and volunteers during that time.

The Central Nebraska HHW Collection Facility will be a tremendous environmental protection opportunity for the community of Grand Island and correlating service area. The City of Grand Island will provide direct supervision of operations and may identify alternative sources of funding for operational costs.

The facility will be located on land donated by the City of Grand Island, adjacent to the existing landfill Transfer Station. This location will increase the ability of residents to dispose of multiple types of waste at one location, creating a **one stop center** for HHW and Landfill disposal. Collaborations with Clean Community System will continue, with Betty Curtis as the facility supervisor. Ms. Curtis brings essential knowledge and skills needed to work with HHW.

This facility will be used in multiple ways:

- as a secure central collection site for HHW;
- as a central point for youth and adult education about chemicals defined as hazardous;
- as a swap shop (paints and other recyclable items);
- for meetings in the planned conference room;
- as a lab for testing materials as needed; and
- to perpetuate continued community disposal efforts through marketing.

Items that this facility will accept and will not accept are listed below:

## Central Nebraska Household Hazardous Waste Collection Facility

### **Items that will be accepted at Central Nebraska Household Hazardous Waste Collection Facility:**

Cleaning Products	Pool Chemicals
Pesticides/Herbicides	Lead Acid Batteries
Used motor oil	Cyanide
Florescent Bulbs	Paint/Paint Related Materials
Mercury/Mercury Related Materials	Lawn/Garden Chemicals
Arsenic & other poisons	Aerosols
Lithium/Nickel Cadmium Batteries	Acids
Computers, televisions and other electronics as bans become effective	

### **Items that will not be accepted at Central Nebraska Household Hazardous Waste Collection Facility:**

Sharps	Fuel
Explosives	Fire Extinguishers
Medical	Empty Containers
Radioactive Materials	Ammunition
Tires	

The facility will employ one supervisor and trained hazardous materials employees as needed to serve the coverage area population of 350,000. Information collected from existing facilities indicates that the collection facility should be open to the public three to four days a week, including Saturday. During days when collection does not take place, facility employees will collect HHW from satellite stations and sort collected HHW.

### **Management Profile**

The Central Nebraska HHW Collection Facility would be managed by Betty Curtis, Executive Director of Grand Island Area Clean Community System. The City of Grand Island Public Works Solid Waste Superintendent will provide direct supervision of operations and management for the facility.

As supervisor of the facility, Ms Curtis brings a vast array of assets to the table. Betty has built strong networks with communities and community leaders across central, northern and south central Nebraska. She has provided HHW education and collection days to selected and contracted communities. Ms. Curtis has extensive experience working with HHW and brings needed skills and knowledge to the facility supervisor position. In addition, she has a close working relationship with Nebraska DEQ staff.

Knowledge of operations for a HHW facility have been obtained by Ms. Curtis through collaborations with a certified hazardous disposal company, Clean Harbors; one-day collection events; educational efforts and neighborhood clean-up events; and communication with and touring of other hazardous waste facilities, including those in McCook, Omaha, and Council Bluffs.

# Central Nebraska Household Hazardous Waste Collection Facility

## **Financial Profile**

The proposed plan for funding the City of Grand Island Central Nebraska HHW Collection Facility will come from multiple funding sources. The architectural and engineering fees, construction of the proposed facility, purchase of satellite stations, and operational financing is proposed to be partially funded through grants awarded from the Nebraska NDEQ, Nebraska Environmental Trust, the City of Grand Island and from fees paid by participating Nebraska counties and communities.

# Central Nebraska Household Hazardous Waste Collection Facility

## INDUSTRY ANALYSIS

### Industry Description

According to the NAICS code, the Hazardous Waste Collection Description number is **562112**. This United States industry definition is comprised of establishments primarily engaged in collecting and/or hauling hazardous waste within a local area and/or operating hazardous waste Transfer Stations. Hazardous waste collection establishments may be responsible for the identification, treatment, packaging, and labeling of wastes for the purposes of transport.

The data published with NAICS code 562112 is comprised of this part of the following SIC industry: 4212 (pt) Hazardous Waste Collection.<sup>1</sup>

### Industry Competition

In the 1997 Economic Census, the U.S. Census reported that there were 414 established HHW collection facilities across the United States employing 8,468 persons. In 2004 there were two facilities in Nebraska: 1) Red Willow County has a HHW facility in McCook; and 2) Omaha has a facility which is due to open in late 2004. These operations take hazardous waste from residents in their county or adjacent counties. Currently, the Clean Community System service area has no accessible HHW collection facility.

The City of Grand Island's Central Nebraska HHW Collection Facility will collect from the Nebraska counties noted in Table 4. Residents outside of the core region served by the permanent facility could use satellite stations located in outlying locations. The adjacent map (Illustration 4) shows the targeted Nebraska market for a permanent facility located in Grand Island and includes approximately 350,000 residents.



### ILLUSTRATION 4.

In planning for a permanent facility, City staff and Betty Curtis visited three existing hazardous waste facilities: Red Willow County, Omaha and Council Bluffs, Iowa. The City of Council Bluffs Health Department operates a Regional Collection Center division that collects HHW from a population base smaller than that of Grand Island and over a smaller coverage area.

Council Bluffs is estimated to collect over **200,000** pounds of HHW this year at its permanent facility and over **8,000** pounds at its mobile/satellite collections for a total over **208,000** pounds of HHW from an estimated **1300** households. This facility serves approximately **85,000** residents with a **3,750** sq ft facility that contains an office, some storage, a swap shop, and work areas. The facility employs 2 hazardous materials employees. Annual expenses for this facility, including disposal cost, salaries, and equipment, etc, is about **\$95,000**, or a cost of **\$1.20** per household within the service area. Participating counties pay a **\$1.00** per capita fee. This **\$1.00** fee per capita fee enables



## Central Nebraska Household Hazardous Waste Collection Facility

residents to dispose of HHW at no cost to them, thus increasing the drop-off rate. This facility collects HHW from about **1.54%** of their service area population.

### **Industry Growth and Projections**

With increasing restrictions and further banning of hazardous materials from landfills, households across the Nebraska target service area have trouble storing and disposing of HHW properly. Electronic items such as monitors, CPU's, televisions and other related electronic materials are the most recent items to be named HHW. An expected ban on these electronic items, combined with existing and future product bans, creates a growing need for a permanent disposal facility.

A Central Nebraska HHW Collection facility located at the Grand Island Transfer Station facility would be strategically placed for much of rural Nebraska. The Grand Island retail area includes almost 20,000 square miles and it serves as a central retail and manufacturing hub for that area. Grand Island is located in the heart of the United States and easily accessible by five major highways: I80, US Highways 281, 30, 34, and Nebraska Highway 2. The location is a key to the HHW facility obtaining economical disposal rates and attracting a large participation base.

# Central Nebraska Household Hazardous Waste Collection Facility

## MARKET ANALYSES

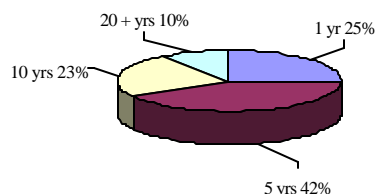
### Target Market Description

#### ILLUSTRATION 3.

HHW is being stored and generated by rural Nebraskans who have very few options for disposal. According to Illustration 3 the majority of citizens will keep HHW between **1 to 5 years** before disposing of it properly at a collection site or sometimes even disposing of it improperly.

An annual collection event typically attracts residents only from the area where the event is held. A permanent facility in Central Nebraska would impact a larger area of Central Nebraska by allowing residents to properly dispose of HHW when visiting Grand Island or when visiting one of the satellite stations strategically located in participating cities.

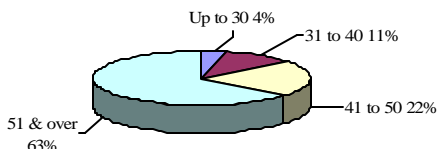
**Time HHW is stored in Central Nebraska in 2003**



Information taken from a 2003 survey given to participants of Grand Island Area Clean Community System Collection Days See **Appendix B**

Although HHW affects all age groups of residents, the majority of participants in collection days provided by Grand Island Area Clean Community System were **51 years and over** with an involvement rate of **63%**. The second largest age group was **41 to 50** at **22%**. This information will enable facility programming to target, educate, and market to all age groups, with an emphasis on marketing to those groups who participate at a lower level. For instance, the age groups below **40** years made up only **15%** of the participating population.

**Age Participation in Central Nebraska 2003 Collection**



Information taken from a 2003 survey given to participants of Grand Island Area Clean Community System Collection Days See **Appendixes C & D**

#### ILLUSTRATION 4.

Educating and marketing to younger age groups will broaden the participation of residents in HHW collections. Increased and targeted education equates to an increased participation rate of all ages in HHW collection in the future.

The 2003 Clean Community System surveys also indicate that a majority of participants in the collection days were informed of the event through a local newspaper. The top two communication mediums for one-day collection events were newspapers (**67%**) and flyers (**18%**). The success of print media suggests that media promotion for a permanent facility would be a marketing tool that should continue to be used.

## Central Nebraska Household Hazardous Waste Collection Facility

### Participation Forecast

In 2003, the Grand Island Area Clean Community System (CCS) collected **an average of 45.71 pounds of HHW from 2,490 households** representing **1.80%** of central Nebraska's households (compare to Council Bluffs collection of 1.54% of their area HHW). With an accessible permanent facility the collection of HHW should increase with consistent hours of operation, further education and expanded marketing of the facility. (2004 numbers were not available for this application.)

Residents in the Grand Island and Clean Community System service area would maintain a working relationship with the Clean Community System through a variety of ways. Community and county collaborations with the CCS will take place through: 1) HHW satellite stations located in designated cities; 2) the formation of inter-local agreements between communities and counties and the City for use of the Central Nebraska HHW Collection Facility; 3) availability of recycling and environmental information at the facility; and 4) the availability of used paint and stains at the Swap Shop.

# Central Nebraska Household Hazardous Waste Collection Facility

## FINANCIAL PLAN

### Historical Analysis

Currently the Grand Island and Clean Community System service area has only one disposal method for HHW: one-day collection events. Collection events have been financed through grants, cash match from participating communities, and in-kind match donations. The following information illustrates financial data related to the cost of providing a one-day HHW collection and education and awareness programs regarding environmental litter.

**TABLE 3.**

#### **Household Hazardous Waste Collections Budget One day events contracted with communities**

<b>Category</b>	<b>Grant</b>	<b>Cash Match</b>	<b>In-Kind Match</b>	<b>Total</b>
Personnel	\$15,545	\$6,903	\$8,380	\$30,828
Office & Safety Supplies	\$2,400	\$1,396	\$45	\$3,841
Operating Expenses	\$2,250	\$850	\$4,100	\$7,200
Contractual	\$98,750	\$34,600	\$0	\$133,350
Mileage	\$1,000	\$500	\$750	\$2,250
Contingency Funds	\$10,000	\$0	\$0	\$10,000
Unexpected Expenses	\$3,000	\$101	\$0	\$3,101
<b>Total</b>	<b>\$132,945</b>	<b>\$44,350</b>	<b>\$13,275</b>	<b>\$190,570</b>

#### **Grand Island Area Clean Community System Education Annual Budget Public education of waste and our environment**

<b>Category</b>	<b>Grant</b>	<b>Cash Match</b>	<b>In-Kind Match</b>	<b>Total</b>
Personnel	\$42,359	\$10,359	\$3,059	\$55,777
Supplies	\$955	\$775	\$75	\$1,805
Operating Expenses	\$6,493	\$5,388	\$32,012	\$43,893
Travel	\$150	\$80	\$169	\$399
Equipment/Maintenance	\$650	\$300	\$0	\$950
Other	\$0	\$0	\$5,750	\$5,750
<b>Total</b>	<b>\$50,607</b>	<b>\$16,902</b>	<b>\$41,065</b>	<b>\$108,574</b>

#### **Total Budget**

<b>Category</b>	<b>Grant</b>	<b>Cash Match</b>	<b>In-Kind Match</b>	<b>Total</b>
Personnel	\$57,904	\$17,262	\$11,439	\$86,605
Supplies	\$3,355	\$2,171	\$120	\$5,646
Operating Expenses	\$8,743	\$6,238	\$36,112	\$51,093
Travel	\$1,150	\$580	\$919	\$2,649
Contractual	\$98,750	\$34,600	\$0	\$133,350
Equipment/Maintenance	\$650	\$300	\$0	\$950
Contingency Funds	\$10,000	\$0	\$0	\$10,000
Other	\$3,000	\$101	\$5,750	\$8,851
<b>Total</b>	<b>\$183,552</b>	<b>\$61,252</b>	<b>\$54,340</b>	<b>\$299,144</b>

## Central Nebraska Household Hazardous Waste Collection Facility

Over the past six years, **9,540** households have participated in Grand Island Area Clean Community System HHW collection days with an average of **1,908** households participating per year. In 2003, approximately **2,490** households participating in HHW collection days. The cost per one day collection event participant in 2005 is expected to be \$20.98. The cost per participant in a permanent facility is projected to be \$28.09. A list of expected figures for 2005-6 one day collections and a permanent facility can be seen in Appendix E.

At the current rate of population growth and the number of households participating in HHW collection days, in 2003 an average household could be expected to pay **\$119.66** for disposal of their HHW (\$299,144 total operations budget / 2,500, # of participating households in 2003). Based on these figures, a resident could be expected to pay an average of **\$2.63** per pound of HHW marked for disposal. The consumer cost will be much less at a permanent facility. (These figures include collection events and further education about environmental litter.)

At a permanent facility, disposal costs are not absorbed by the individual resident but are paid through grants, a cash match from each participating community or county and in-kind services (i.e. volunteer hours). The intent of the facility is to offer a service to the consumer at little or no cost.

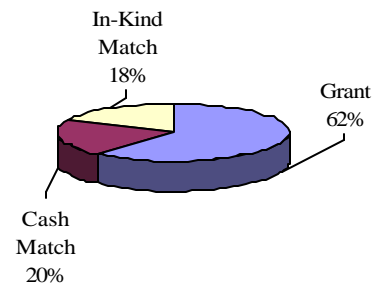


Diagram A

### ILLUSTRATION 5

#### Financial Projections

The following financial information was taken from the Clean Community System budget, the City of Grand Island, and from financial records of existing HHW facilities. The figures are estimated. The facility will be located at the City of Grand Island Transfer Station (5050 West Old Potash Highway) on land owned by the City and donated for the construction of a HHW facility. This in-kind match of land equates to a **\$5,000 per acre** donation, at **eight (8)** acres for a total of **\$40,000**. This valuable in kind match and co-location frees up other funds to be used as a match for grant funding.

The cost of construction for a **9,500** sq ft facility, at an estimated **\$110** a sq ft, would be \$1,045,000 dollars. The Central Nebraska HHW Collection Facility will apply for an Environmental Trust Grant to apply to 75% of construction costs.

	Environmental Trust 75%	Match 25%	Total
Building 9,500 sq ft @ \$110 sq ft	\$783,750	\$261,250	\$1,045,000

TABLE 4.

## Central Nebraska Household Hazardous Waste Collection Facility

The cost of construction would include specialized equipment and unique facility design. The proposed facility would include 2-3 offices, a conference room, restrooms, a lab, showers, storage, and a swap shop.

Also proposed are **6-10** satellite stations placed throughout the service area. A DEQ grant for **\$100,000** will be requested to help pay for these sites at some point in the future. The satellites will be placed strategically across the service area, run by local volunteers and collected for disposal by Central Nebraska Household Hazardous Waste Collection Facility staff.

<b>DEQ Funds 100%</b>	<b>Total</b>
<b>Satellite</b>	
<b>10 @ \$10,000 each</b>	<b>\$100,000</b>

**TABLE 5.**

Participating communities and counties will be invited to invest in the facility and the collection of HHW through a \$0.50/year per capita for residents within their community. The \$0.50 per capita for participating communities and a five year operational grant from the DEQ would finance a large portion of operations and expenses of the facility. The remainder of financing will be incurred by the City of Grand Island and participating communities. Total annual Operations budget is estimated to be \$320,300.

One day collection events are financed through a combination of DEQ grant funding and a fee from each participating community. Each community or county pays a fee to participate in a collection event. Through this payment system, the Clean Community System has laid the groundwork for charging a flat per capita fee to each community and county who will participate in a permanent facility or satellite location.

**TABLE 11.**

### **Annual Operational Budget**

DEQ Funds 100%

Personnel Services

	<b>Total</b>
Salary:	
1 Coordinator & 1 Worker	\$63,000
F.I.C.A. Payroll Taxes	\$3,200
Health Insurance	\$9,000
Life Insurance	\$100
Disability Insurance	\$100
Clothing Allowance	\$100
Pension Contribution	\$2,800
Workers Compensation	\$500
<b>Total Personnel</b>	<b>\$78,800</b>

## Central Nebraska Household Hazardous Waste Collection Facility

### Operating Expenses

	Total
Contract Services	\$100,000
Supplies	\$6,000
Other Operating Expenses	\$51,000
Travel	\$3,500
<b>Total Operating Expenses</b>	<b>\$160,500</b>

### Capital Outlay

	Total
Building Improvements	\$1,000
Machinery and Equipment	\$35,000
Office Furniture & Equipment	\$20,000
Vehicles	\$25,000
<b>Total Capital Outlay</b>	<b>\$81,000</b>

<b>DEQ Funds 100%</b>	<b>Total</b>
<b>Total Operational Cost</b>	<b>\$320,300</b>

The following budget describes the financing for the construction, satellites, and operation.

**TABLE 7.**  
**Projected operations Budget**

Project Budget

Grant pays for 75% of constructin and 100% of first 5 years of operations

	Construction	Satallite	Annual Operations	Total
Environmental Trust Grant	\$783,750	\$0	\$0	\$783,750
DEQ Grant	\$0	\$100,000	\$320,300	\$420,300
* Cash Match by participating communities with ½ of central Neb. Households participating	\$0	\$0	\$0	\$0
City of Grand Island	\$261,250	\$0	\$0	\$261,250
<b>Total</b>	<b>\$1,045,000</b>	<b>\$100,000</b>	<b>\$320,300</b>	<b>\$1,465,300</b>

\* Cash Match will vary depending on community participation

## Central Nebraska Household Hazardous Waste Collection Facility

The percent breakdown of funding for construction and operations is shown in Illustration 6 to the right. Grant funding from the DEQ and the Environmental Trust comprises 77% of the total cost.

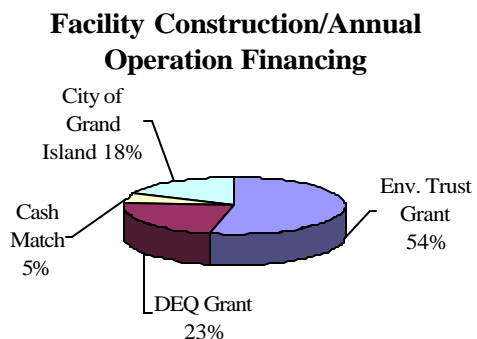
### ILLUSTRATION 6.

#### The Grand Island Area Clean Community

System budget for a HHW one-day collection event shows a per household cost of \$119.66 for disposal of their HHW (based on a 2003 operational budget of \$299,144 / 2,500 participants); otherwise stated as an average of \$2.63 per pound of HHW (\$299,144 operational budget / 113,815 pounds collected in 2003).

In comparison, according to the proposed budget for the Central Nebraska HHW Collection Facility, disposal costs per household could be \$3 per household (\$320,300 operational cost / (350,000 residents \* 2.49 per household) or an average of 11¢ a pound (\$320,300 / ((350,000 residents/2.49 per household) \* 20 pounds possibly produced by a household a year)).

In conclusion, it may be more cost-effective to finance a permanent HHW collection facility at the cost of \$3 a household or 2¢ a pound than to collect HHW at one-day collection events only. An estimation of participating household cost can be viewed in Appendix E Pages 27 through 31.





# Central Nebraska Household Hazardous Waste Collection Facility

## TIME LINE

### Central Nebraska Household Hazardous Waste Collection Facility

Central Nebraska HHW Collection Facility	Start	Finish
City of Grand Island, Grand Island Clean Community System, and DEQ Meeting on a Household Hazardous Waste Facility	Wed 3/24/04	Wed 3/24/04
Research Committee (Paul Briseno, Betty Curtis, Joni Kuzma)	Mon 4/12/04	Mon 4/12/04
Tour McCook/Redwillow County Household Hazardous Waste Facility, Research Committee	Thu 4/29/04	Thu 4/29/04
Tour Omaha's Household Hazardous Waste Facility, Research Committee	Fri 6/18/04	Fri 6/18/04
Research Committee	Fri 6/25/04	Fri 6/25/04
Tour Proposed Sites in Grand Island, Research Committee	Tue 6/29/04	Tue 6/29/04
Tour City of Grand Island Transfer Station for Possible Household Hazardous Waste Facility	Mon 7/12/04	Mon 7/12/04
Research Committee Meeting	Thu 7/22/04	Thu 7/22/04
Research Committee Meeting (Formation of Committee Group, GIFD, GIPD, Health Dept, Public Works, City Council Rep)	Wed 7/28/04	Wed 7/28/04
Tour Council Bluff's Household Hazardous Waste Facility	Fri 9/3/04	Fri 9/3/04
Research Committee Meeting	Wed 9/8/04	Wed 9/8/04
Committee Meeting	Tue 9/21/04	Tue 9/21/04
Operation Plan	Mon 10/18/04	Fri 12/10/04
Research Committee Meeting	Wed 11/3/04	Wed 11/3/04
Central Nebraska Household Hazardous Waste Facility Presentation to Council	Tue 1/4/05	Tue 1/4/05
Department of Environmental Quality Grant Due (Requesting funding for Facility Architect)	Tue 2/1/05	Tue 2/1/05
Department of Environmental Quality Grant Awarded	Fri 7/1/05	Fri 7/1/05
Request For Proposal for Architect	Mon 5/9/05	Mon 5/9/05
Approval of Contract with Architect	Tue 6/14/05	Tue 6/14/05
Design of Facility	Mon 6/13/05	Fri 11/25/05
Environmental Trust Grant Due (Requesting funding for Construction of Facility)	Thu 9/1/05	Thu 9/1/05
Environmental Trust Grant Awarded	Mon 4/3/06	Mon 4/3/06
Construction of Central Nebraska Household Hazardous Waste Facility	Tue 8/1/06	Fri 12/1/06
Department of Environmental Quality Grant Due (Requesting funding for a 5 year Operation & Satellite station grant)	Wed 2/1/06	Wed 2/1/06
Department of Environmental Quality Grant Awarded	Mon 7/3/06	Mon 7/3/06

# Central Nebraska Household Hazardous Waste Collection Facility

## Appendix A

### Household Hazardous Waste Collected from 1999 – 2003 by Grand Island Area Clean Community System

1999

City/County	Paint & Related Materials	Corrosive liquid	Pesticides	Oxidizing Substances	Computers	Lead Acid Batteries	Oil	Total Pounds of Collected HHW	#of Households Participating	City/County	Average lb from participating hh
Grand Island/ Hall (including 12 other counties)	21,533	554	2,581	0	3,000	7,000	9,100	43,768	949	Grand Island/ Hall (including 12 other counties)	50.83
Aurora/ Hamilton (including 5 other counties)	6,437	0	1,085	0	1,200	525	1,925	11,172	187	Aurora/ Hamilton (including 5 other counties)	% of hh participating in central Nebraska 1.06%
St. Paul/ Howard (including 6 other counties)	3,954	0	545	0	560	2,275	2,275	9,609	162	St. Paul/ Howard (including 6 other counties)	
Central City/ Merrick (and other counties)	4,749	70	704	0	240	2,275	1,925	9,963	168	Central City/ Merrick (and other counties)	
<b>Total lbs</b>	<b>36,673</b>	<b>624</b>	<b>4,915</b>	<b>0</b>	<b>5,000</b>	<b>12,075</b>	<b>15,225</b>	<b>74,512</b>	<b>1,466</b>		

2000

City/County	Paint & Related Materials	Corrosive liquid	Pesticides	Oxidizing Substances	Computers	Lead Acid Batteries	Oil	Total Pounds of Collected HHW	#of Households Participating	City/County	Average lb from participating hh
Grand Island/ Hall	27,180	770	1,420	0	1,500	5,000	10,200	46,070	881	Grand Island/ Hall	53.95
Holdrege/ Phelps	5,600	2,210	1,310	0	1,300	12,000	12,600	35,020	146	Holdrege/ Phelps	% of hh participating in central Nebraska 1.78%
Merrick and Nance Counties	6,077	440	474	0	1,000	1,200	2,800	11,991	254	Merrick and Nance Counties	
Aurora/ Hamilton	6,270	1,550	724	0	1,200	2,500	3,400	15,644	345	Aurora/ Hamilton	
St. Paul/ Howard (including 7 other small counties)	16,530	900	2,620	0	1,300	12,000	11,700	45,050	835	St. Paul/ Howard (including 7 other small counties)	
<b>Total lbs</b>	<b>61,657</b>	<b>5,870</b>	<b>6,548</b>	<b>0</b>	<b>6,300</b>	<b>32,700</b>	<b>40,700</b>	<b>153,775</b>	<b>2,461</b>		

2001

City/County	Paint & Related Materials	Corrosive liquid	Pesticides	Oxidizing Substances	Computers	Lead Acid Batteries	Oil	Total Pounds of Collected HHW	#of Households Participating	City/County	Average lb from participating hh
Grand Island/ Hall	13,530	445	3,060	0	800	2,500	5,000	25,335	529	Grand Island/ Hall	56.31
Aurora/ Hamilton	1,660	0	1,155	4	800	1,200	1,110	5,929	125	Aurora/ Hamilton	% of hh participating in central Nebraska 0.68%
Fullerton/ Merrick (including Nance County and Central City)	3,013	285	1,064	102	200	500	1,197	6,361	120	Fullerton/ Merrick (including Nance County and Central City)	
City of Ord/ Valley (including 8 other counties)	3,639	240	2,534	0	500	5,000	3,000	14,913	159	City of Ord/ Valley (including 8 other counties)	
<b>Total lbs</b>	<b>21,842</b>	<b>970</b>	<b>7,813</b>	<b>106</b>	<b>2,300</b>	<b>9,200</b>	<b>10,307</b>	<b>52,538</b>	<b>933</b>		

2002

City/County	Paint & Related Materials	Corrosive liquid	Pesticides	Oxidizing Substances	Computers	Lead Acid Batteries	Oil	Total Pounds of Collected HHW	#of Households Participating	City/County	Average lb from participating hh
Grand Island/ Hall	6,800	200	1,800	0	800	2,500	3,000	15,100	299	Grand Island/ Hall	51.43
Holdrege/ Phelps	3,400	120	500	75	500	800	534	5,929	134	Holdrege/ Phelps	% of hh participating in central Nebraska 1.59%
York/ York	7,200	500	1,200	10	700	1,000	5,336	15,946	287	York/ York	
Hastings/ Adams and Minden/ Kearney	13,950	300	2,200	25	500	1,500	3,345	21,820	470	Hastings/ Adams and Minden/ Kearney	
Ponca Tribe of Nebraska, City of Elgin, Villages of Carroll and Concord	750	50	350	0	50	500	0	1,700	46	Ponca Tribe of Nebraska, City of Elgin, Villages of Carroll and Concord	
Fremont/ Dodge	21,000	380	3,125	15	2,000	3,300	3,500	33,320	720	Fremont/ Dodge	
Cities of Seward and Utica	1,800	0	600	0	500	1,500	500	4,900	77	Cities of Seward and Utica	
Ashland/ Johnson and Village of Dunbar and Cities of Louisville and Sterling	4,000	220	1,200	0	5000	3,500	0	13,920	157	Ashland/ Johnson and Village of Dunbar and Cities of Louisville and Sterling	
<b>Total lbs</b>	<b>58,900</b>	<b>1,770</b>	<b>10,975</b>	<b>125</b>	<b>10,050</b>	<b>14,600</b>	<b>16,215</b>	<b>112,635</b>	<b>2,190</b>		

# Central Nebraska Household Hazardous Waste Collection Facility

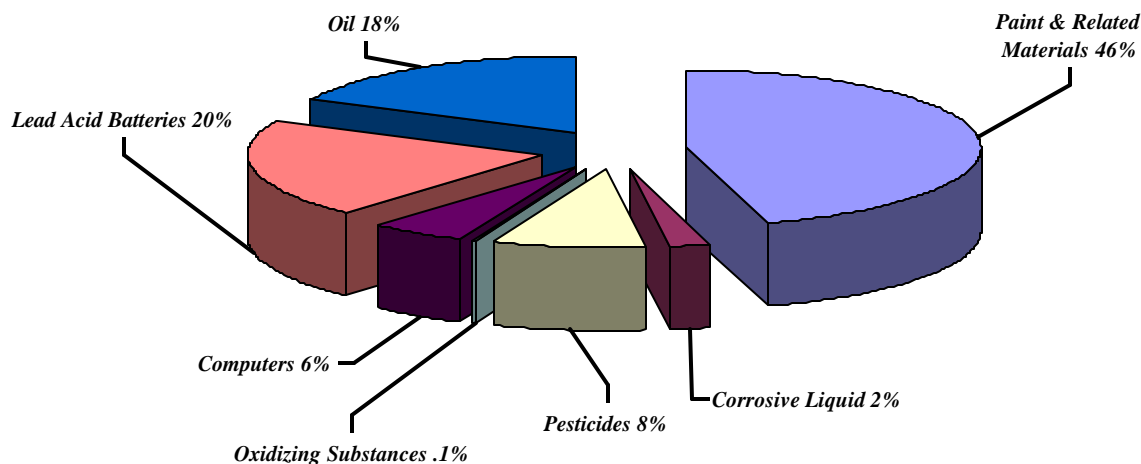
2003

City/County	Paint & Related Materials	Corrosive liquid	Pesticides	Oxidizing Substances	Computers	Lead Acid Batteries	Oil	Total Pounds of Collected HHW	#of Households Participating	City/County	Average lb from participating hh
Grand Island/Hall	15,000	300	2,600	120	0	0	0	18,020	723	Grand Island/Hall	45.71
Aurora/ Hamilton	3,200	0	1,800	0	1,300	1,900	0	8,200	148	Aurora/ Hamilton	% of hh participating in central Nebraska 1.80%
Central City/ Merrick	2,000	400	1,000	0	300	2,100	0	5,800	76	Central City/ Merrick	
City of Norfolk	6,800	0	800	0	0	0	0	7,600	204	City of Norfolk	
Cities of Albion, Fullerton and Villages of Cedar Rapids and Meadow Grove	4,400	200	600	0	750	2,500	375	8,825	97	Cities of Albion, Fullerton and Villages of Cedar Rapids and Meadow Grove	
Kearney/ Buffalo	3,200	180	800	80	0	0	0	4,260	241	Kearney/ Buffalo	
Plattsmouth, Louisville, Eagle and Unadilla	6,000	0	200	0	1,500	2,500	2,400	12,600	280	Plattsmouth, Louisville, Eagle and Unadilla	
Atkinson, Plainview	2,400	200	600	100	500	1,200	350	5,350	60	Atkinson, Plainview	
Loup Basin RC & D	4,500	140	2,700	0	0	20,000	4,200	31,540	533	Loup Basin RC & D	
Holdrege/ Phelps and Minden/ Kearney	5,000	70	1,200	0	0	5,000	350	11,620	128	Holdrege/ Phelps and Minden/ Kearney	
<b>Total lbs</b>	<b>52,500</b>	<b>1,490</b>	<b>12,300</b>	<b>300</b>	<b>4,350</b>	<b>35,200</b>	<b>7,675</b>	<b>113,815</b>	<b>2,490</b>		

5 Year Total

Paint & Related Materials	Corrosive liquid	Pesticides	Oxidizing Substances	Computers	Lead Acid Batteries	Oil	Total Pounds of Collected HHW	#of Households Participating	Average lb collected per hh
231,572	10,724	42,551	531	28,000	103,775	90,122	507,275	9,540	53.17
							101455 average per year lb collected	1908 average per year hh participating	1.38% Average % of hh participating from Central Nebraska

## 5 Years of Household Waste Disposed by Clean Community Systems



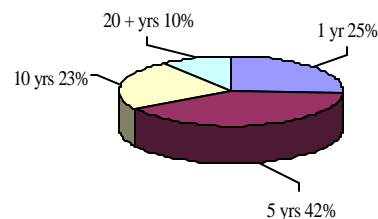
# Central Nebraska Household Hazardous Waste Collection Facility

## Appendix B

### Amount of time household hazardous waste is stored in Central Nebraska from Grand Island Area Clean Community System collection days

City/County	1 yr	5 yrs	10 yrs	20 + yrs
Grand Island/Hall	117	172	65	22
Aurora/ Hamilton	45	39	28	14
Central City/ Merrick	19	22	14	7
City of Norfolk	19	56	49	22
Cities of Albion, Fullerton and Villages of Cedar Rapids and Meadow Grove	25	30	17	15
Kearney/ Buffalo	37	67	37	11
Plattsmouth, Louisville, Eagle and Unadilla	22	74	56	23
Atkinson, Plainview	11	24	12	6
Holdrege/ Phelps and Minden/ Kearney	31	40	21	12
Total	326	524	299	132

Time HHW is stored in Central Nebraska in 2003

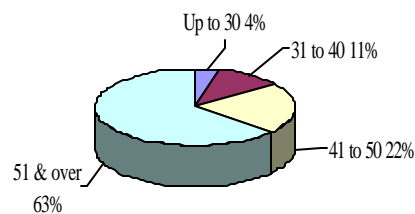


## Appendix C

### Age of participating resident in household hazardous waste collection days from Grand Island Area Clean Community System

City/County	Up to 30	31 to 40	41 to 50	51 & over
Grand Island/Hall	15	32	99	218
Aurora/ Hamilton	8	18	30	69
Central City/ Merrick	1	5	12	43
City of Norfolk	4	16	26	92
Cities of Albion, Fullerton and Villages of Cedar Rapids and Meadow Grove	2	3	13	64
Kearney/ Buffalo	8	15	29	88
Plattsmouth, Louisville, Eagle and Unadilla	6	28	40	108
Atkinson, Plainview	1	2	6	43
Holdrege/ Phelps and Minden/ Kearney	3	17	15	68
Total	48	136	270	793

Age Participation in Central Nebraska 2003 Collection

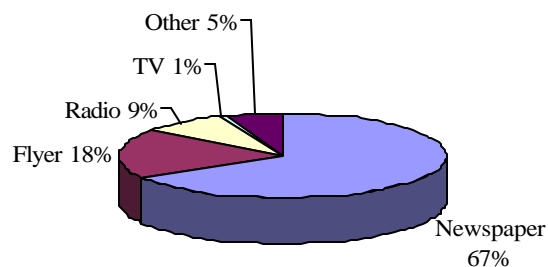


## Appendix D

### Participating residents found out about the Grand Island Area Clean Community System collection days through different medias

City/County	Newspaper	Flyer	Radio	TV	Other
Grand Island/Hall	317	18	37	3	23
Aurora/ Hamilton	98	27	0	6	8
Central City/ Merrick	59	1	1	0	1
City of Norfolk	117	15	40	0	7
Cities of Albion, Fullerton and Villages of Cedar Rapids and Meadow Grove	70	38	0	0	4
Kearney/ Buffalo	113	13	19	5	12
Plattsmouth, Louisville, Eagle and Unadilla	60	113	0	0	13
Atkinson, Plainview	44	7	11	0	2
Holdrege/ Phelps and Minden/ Kearney	67	30	14	1	7
Total	945	262	122	15	77

Means of notification



# Central Nebraska Household Hazardous Waste Collection Facility

## Appendix E

### 2005 Grant Proposal for continuation of one day collections

Figures broke down per individual

2003 individual figures for household collection days

\*Averages are from 2000 collections to stay constant with Census figures

Community/Village/County	Population n	Cash Match	Cost per capita	Expected Individual Participating @ 1.78% Average from 2000 Collection	Actual Cost per Participating Individual
Holdrege/Phelps County	5,636	\$1,250.00	\$0.22	100.32	\$12.46
City of Atkinson	1,244	\$500.00	\$0.40	22.14	\$22.58
City of Bassett	743	\$225.00	\$0.30	13.23	\$17.01
City of Butte	366	\$175.00	\$0.48	6.51	\$26.86
City of Norfolk	23,516	\$10,000.00	\$0.43	418.58	\$23.89
Village of Concord	156	\$150.00	\$0.96	2.78	\$54.02
Village of Carroll	238	\$175.00	\$0.74	4.24	\$41.31
City of Albion	1,797	\$750.00	\$0.42	31.99	\$23.45
City of Neligh	1,651	\$750.00	\$0.45	29.39	\$25.52
Village of Meadow Grove	311	\$175.00	\$0.56	5.54	\$31.61
Village of Newman Grove	797	\$300.00	\$0.38	14.19	\$21.15
Village of Cedar Rapids	407	\$175.00	\$0.43	7.24	\$24.16
Ord/Valley County	4,617	\$1,000.00	\$0.22	82.18	\$12.17
Greeley County	2,714	\$650.00	\$0.24	48.31	\$13.45
Sherman County	3,318	\$800.00	\$0.24	59.06	\$13.55
Wheeler County	886	\$225.00	\$0.25	15.77	\$14.27
Garfield County	1,902	\$500.00	\$0.26	33.86	\$14.77
Loup County	712	\$150.00	\$0.21	12.67	\$11.84
Blain County	583	\$150.00	\$0.26	10.38	\$14.45
Howard County	6,567	\$1,500.00	\$0.23	116.89	\$12.83
Central City/Merrick County	8,204	\$1,500.00	\$0.18	146.03	\$10.27
City of Aurora/Hamilton County	9,403	\$1,500.00	\$0.16	167.37	\$8.96
Village of Goehner	186	\$150.00	\$0.81	3.31	\$45.31
Grand Island/Hall County	50,000	\$9,000.00	\$0.18	890.00	\$10.11
Hastings/ Adams County	24,064	\$9,500.00	\$0.39	428.34	\$22.18
Village of Glenvil	332	\$175.00	\$0.53	5.91	\$29.61
City of Wahoo	3,942	\$1,250.00	\$0.32	70.17	\$17.81
City of Ashland	2,136	\$575.00	\$0.27	38.02	\$15.12
City of Louisville	998	\$300.00	\$0.30	17.76	\$16.89
Fort Calhoun	856	\$300.00	\$0.35	15.24	\$19.69
City of Yutan	1,216	\$500.00	\$0.41	21.64	\$23.10
	159,498	\$ 44,350.00	\$0.37	2,839.06	\$20.98
	individuals in area	Cash Match	Average Cost per Individual	Individuals expected to participate	Cost for a participating individual

# Central Nebraska Household Hazardous Waste Collection Facility

## Permanent household hazardous waste facility individual figures for participating communities

Figures broken down per individual

Individual Figures for CNHHWCF with everything constant with 2000 figures

Community/Village/County	Population	Cash Match @ \$.50 per capita	Cost Per capita	Expected Individual Participating @ 1.78% Average from 2000 Collection	Actual Cost per 1 Participatin g Individual
Albion	1,797	\$898.50	\$0.50	31.99	\$28.09
Atkinson	1,244	\$622.00	\$0.50	22.14	\$28.09
Avoca	270	\$135.00	\$0.50	4.81	\$28.09
Ashland	2,262	\$1,131.00	\$0.50	40.26	\$28.09
Bassett	743	\$371.50	\$0.50	13.23	\$28.09
Butte	366	\$183.00	\$0.50	6.51	\$28.09
Beaver Crossing	457	\$228.50	\$0.50	8.13	\$28.09
Bee	223	\$111.50	\$0.50	3.97	\$28.09
Concord	156	\$78.00	\$0.50	2.78	\$28.09
Carroll	238	\$119.00	\$0.50	4.24	\$28.09
Cedar Rapids	407	\$203.50	\$0.50	7.24	\$28.09
Dixon	108	\$54.00	\$0.50	1.92	\$28.09
Douglas	231	\$115.50	\$0.50	4.11	\$28.09
Eagle	1,105	\$552.50	\$0.50	19.67	\$28.09
Elgin	735	\$367.50	\$0.50	13.08	\$28.09
Fort Calhoun	856	\$428.00	\$0.50	15.24	\$28.09
Glenvil	332	\$166.00	\$0.50	5.91	\$28.09
Louisville	998	\$499.00	\$0.50	17.76	\$28.09
Meadow Grove	311	\$155.50	\$0.50	5.54	\$28.09
Neligh	1,651	\$825.50	\$0.50	29.39	\$28.09
Newman Grove	797	\$398.50	\$0.50	14.19	\$28.09
Norfolk	23,516	\$11,758.00	\$0.50	418.58	\$28.09
Niobrara	379	\$189.50	\$0.50	6.75	\$28.09
Osceola	921	\$460.50	\$0.50	16.39	\$28.09
Plainview	1,353	\$676.50	\$0.50	24.08	\$28.09
Plattsmouth	6,887	\$3,443.50	\$0.50	122.59	\$28.09
Seward	6,427	\$3,213.50	\$0.50	114.40	\$28.09
Shelby	690	\$345.00	\$0.50	12.28	\$28.09
Unadilla	342	\$171.00	\$0.50	6.09	\$28.09
Utica	844	\$422.00	\$0.50	15.02	\$28.09
Wahoo	3,942	\$1,971.00	\$0.50	70.17	\$28.09
Yutan	1,216	\$608.00	\$0.50	21.64	\$28.09
Holderege/Phelps County	5,636	\$2,818.00	\$0.50	100.32	\$28.09
Central City/Merrick County	8,204	\$4,102.00	\$0.50	146.03	\$28.09
Aurora/Hamilton County	9,403	\$4,701.50	\$0.50	167.37	\$28.09
Hastings/Adams County	24,064	\$12,032.00	\$0.50	428.34	\$28.09
Minden/Kearney County	3,815	\$1,907.50	\$0.50	67.91	\$28.09
Fullerton/Nance County	2,493	\$1,246.50	\$0.50	44.38	\$28.09
Kearney/Buffalo County	33,571	\$16,785.50	\$0.50	597.56	\$28.09
York/York County	9,804	\$4,902.00	\$0.50	174.51	\$28.09
Fremont/Dodge County	28,911	\$14,455.50	\$0.50	514.62	\$28.09
Grand Island/Hall County	46,349			825.01	\$0.00
Ord/Valley County	4,617	\$2,308.50	\$0.50	82.18	\$28.09
Greeley county	2,714	\$1,357.00	\$0.50	48.31	\$28.09
Sherman County	3,318	\$1,659.00	\$0.50	59.06	\$28.09
Wheeler County	886	\$443.00	\$0.50	15.77	\$28.09
Garfield County	1,902	\$951.00	\$0.50	33.86	\$28.09
Loup County	712	\$356.00	\$0.50	12.67	\$28.09
Blaine County	583	\$291.50	\$0.50	10.38	\$28.09
Howard County	6,567	\$3,283.50	\$0.50	116.89	\$28.09
Reach Out Counties -					
Mentioned city's above					
Harlan County	3,039	\$1,519.50	\$0.50	54.09	\$28.09
Franklin County	2,363	\$1,181.50	\$0.50	42.06	\$28.09
Webster County	2,582	\$1,291.00	\$0.50	45.96	\$28.09
Nuckolls County	4,367	\$2,183.50	\$0.50	77.73	\$28.09
Thayer County	4,011	\$2,005.50	\$0.50	71.40	\$28.09
Filmore County	4,504	\$2,252.00	\$0.50	80.17	\$28.09
Clay County	4,652	\$2,326.00	\$0.50	82.81	\$28.09
Keya Paha County	303	\$151.50	\$0.50	5.39	\$28.09
Brown County	2,256	\$1,128.00	\$0.50	40.16	\$28.09
Antelope County	2,452	\$1,226.00	\$0.50	43.65	\$28.09
Boone County	1,239	\$619.50	\$0.50	22.05	\$28.09
Boyd County	1,020	\$510.00	\$0.50	18.16	\$28.09
Cass County	3,631	\$1,815.50	\$0.50	64.63	\$28.09
Clay County	3,205	\$1,602.50	\$0.50	57.05	\$28.09
Dixon County	3,881	\$1,940.50	\$0.50	69.08	\$28.09
Holt County	5,506	\$2,753.00	\$0.50	98.01	\$28.09
Knox County	4,332	\$2,166.00	\$0.50	77.11	\$28.09
Madison County	4,322	\$2,161.00	\$0.50	76.93	\$28.09
Otoe County	3,096	\$1,548.00	\$0.50	55.11	\$28.09
Pierce County	2,983	\$1,491.50	\$0.50	53.10	\$28.09
Polk county	1,554	\$777.00	\$0.50	27.66	\$28.09
Rock County	98	\$49.00	\$0.50	1.74	\$28.09
Saunders County	4,084	\$2,042.00	\$0.50	72.70	\$28.09
Seward County	2,875	\$1,437.50	\$0.50	51.18	\$28.09
Washington County	9,516	\$4,758.00	\$0.50	169.38	\$28.09
Wayne County	6,313	\$3,156.50	\$0.50	112.37	\$28.09
	343,537	\$148,594.00	\$0.50	6,114.96	\$28.09
individuals in area		Cash Match	Average Cost per Individual	Individuals expected to participate	Cost for a participating individual

# Central Nebraska Household Hazardous Waste Collection Facility

## 2005 Grant Proposal for continuation of one day collections

Figures broke down per household

Household figures

Community/Village/County	Population	# Households (Census average of 2.49)	Cash Match	Cost per Household for total households	Expected Households Participatin g @ 1.78% Average 2000	Actual Cost per Participating Individual
Holdrege/Phelps County	5,636	2,263.45	\$1,250.00	\$0.55	40.29	\$31.03
City of Atkinson	1,244	499.60	\$500.00	\$1.00	8.89	\$56.22
City of Bassett	743	298.39	\$225.00	\$0.75	5.31	\$42.36
City of Butte	366	146.99	\$175.00	\$1.19	2.62	\$66.89
City of Norfolk	23,516	9,444.18	\$10,000.00	\$1.06	168.11	\$59.49
Village of Concord	156	62.65	\$150.00	\$2.39	1.12	\$134.51
Village of Carroll	238	95.58	\$175.00	\$1.83	1.70	\$102.86
City of Albion	1,797	721.69	\$750.00	\$1.04	12.85	\$58.38
City of Neligh	1,651	663.05	\$750.00	\$1.13	11.80	\$63.55
Village of Meadow Grove	311	124.90	\$175.00	\$1.40	2.22	\$78.71
Village of Newman Grove	797	320.08	\$300.00	\$0.94	5.70	\$52.66
Village of Cedar Rapids	407	163.45	\$175.00	\$1.07	2.91	\$60.15
Ord/Valley County	4,617	1,854.22	\$1,000.00	\$0.54	33.01	\$30.30
Greeley County	2,714	1,089.96	\$650.00	\$0.60	19.40	\$33.50
Sherman County	3,318	1,332.53	\$800.00	\$0.60	23.72	\$33.73
Wheeler County	886	355.82	\$225.00	\$0.63	6.33	\$35.52
Garfield County	1,902	763.86	\$500.00	\$0.65	13.60	\$36.77
Loup County	712	285.94	\$150.00	\$0.52	5.09	\$29.47
Blain County	583	234.14	\$150.00	\$0.64	4.17	\$35.99
Howard County	6,567	2,637.35	\$1,500.00	\$0.57	46.94	\$31.95
Central City/Merrick County	8,204	3,294.78	\$1,500.00	\$0.46	58.65	\$25.58
City of Aurora/Hamilton Cou	9,403	3,776.31	\$1,500.00	\$0.40	67.22	\$22.32
Village of Goehner	186	74.70	\$150.00	\$2.01	1.33	\$112.81
Grand Island/Hall County	50,000	20,080.32	\$9,000.00	\$0.45	357.43	\$25.18
Hastings/ Adams County	24,064	9,664.26	\$9,500.00	\$0.98	172.02	\$55.22
Village of Glenvil	332	133.33	\$175.00	\$1.31	2.37	\$73.74
City of Wahoo	3,942	1,583.13	\$1,250.00	\$0.79	28.18	\$44.36
City of Ashland	2,136	857.83	\$575.00	\$0.67	15.27	\$37.66
City of Louisville	998	400.80	\$300.00	\$0.75	7.13	\$42.05
Fort Calhoun	856	343.78	\$300.00	\$0.87	6.12	\$49.03
City of Yutan	1,216	488.35	\$500.00	\$1.02	8.69	\$57.52
	159,498	64,055.42	\$ 44,350.00	\$0.93	1140.19	\$52.24
	individuals in area	# of households in area		Average cost household	Households expected to participate	Cost for a participating household



# Central Nebraska Household Hazardous Waste Collection Facility

## Permanent household hazardous waste facility household figures for participating communities at a continued 1.78% participation rate

Figures broken down per household

Community/Village/County	Population	# Households (Census average of 2.49)	Cash Match @ 1.245(2.49*.50) percapita	Cost per Household for total households	Expected Households Participatin g @ 1.78% Average 2000	Actual Cost per Participating Household
Albion	1,797	721.69	\$898.50	\$1.25	12.85	\$69.94
Atkinson	1,244	499.60	\$622.00	\$1.25	8.89	\$69.94
Avoca	270	108.43	\$135.00	\$1.25	1.93	\$69.94
Ashland	2,262	908.43	\$1,131.00	\$1.25	16.17	\$69.94
Bassett	743	298.39	\$371.50	\$1.25	5.31	\$69.94
Butte	366	146.99	\$183.00	\$1.25	2.62	\$69.94
Beaver Crossing	457	183.53	\$228.50	\$1.25	3.27	\$69.94
Bee	223	89.56	\$111.50	\$1.25	1.59	\$69.94
Concord	156	62.65	\$78.00	\$1.25	1.12	\$69.94
Carroll	238	95.58	\$119.00	\$1.25	1.70	\$69.94
Cedar Rapids	407	163.45	\$203.50	\$1.25	2.91	\$69.94
Dixon	108	43.37	\$54.00	\$1.25	0.77	\$69.94
Douglas	231	92.77	\$115.50	\$1.25	1.65	\$69.94
Eagle	1,105	443.78	\$552.50	\$1.25	7.90	\$69.94
Elgin	735	295.18	\$367.50	\$1.25	5.25	\$69.94
Fort Calhoun	856	343.78	\$428.00	\$1.25	6.12	\$69.94
Glenvil	332	133.33	\$166.00	\$1.25	2.37	\$69.94
Louisville	998	400.80	\$499.00	\$1.25	7.13	\$69.94
Meadow Grove	311	124.90	\$155.50	\$1.25	2.22	\$69.94
Neligh	1,651	663.05	\$825.50	\$1.25	11.80	\$69.94
Newman Grove	797	320.08	\$398.50	\$1.25	5.70	\$69.94
Norfolk	23,516	9,444.18	\$11,758.00	\$1.25	168.11	\$69.94
Niobrara	379	152.21	\$189.50	\$1.25	2.71	\$69.94
Osceola	921	369.88	\$460.50	\$1.25	6.58	\$69.94
Plainview	1,353	543.37	\$676.50	\$1.25	9.67	\$69.94
Plattsmouth	6,887	2,765.86	\$3,443.50	\$1.25	49.23	\$69.94
Seward	6,427	2,581.12	\$3,213.50	\$1.25	45.94	\$69.94
Shelby	690	277.11	\$345.00	\$1.25	4.93	\$69.94
Unadilla	342	137.35	\$171.00	\$1.25	2.44	\$69.94
Utica	844	338.96	\$422.00	\$1.25	6.03	\$69.94
Wahoo	3,942	1,583.13	\$1,971.00	\$1.25	28.18	\$69.94
Yutan	1,216	488.35	\$608.00	\$1.25	8.69	\$69.94
Holderege/Phelps County	5,636	2,263.45	\$2,818.00	\$1.25	40.29	\$69.94
Central City/Merrick County	8,204	3,294.78	\$4,102.00	\$1.25	58.65	\$69.94
Aurora/Hamilton County	9,403	3,776.31	\$4,701.50	\$1.25	67.22	\$69.94
Hastings/Adams County	24,064	9,664.26	\$12,032.00	\$1.25	172.02	\$69.94
Minden/Kearney County	3,815	1,532.13	\$1,907.50	\$1.25	27.27	\$69.94
Fullerton/Nance County	2,493	1,001.20	\$1,246.50	\$1.25	17.82	\$69.94
Kearney/Bufalo County	33,571	13,482.33	\$16,785.50	\$1.25	239.99	\$69.94
York/York County	9,804	3,937.35	\$4,902.00	\$1.25	70.08	\$69.94
Fremont/Dodge County	28,911	11,610.84	\$14,455.50	\$1.25	206.67	\$69.94
Grand Island/Hall County	46,349	18,614.06			331.33	\$0.00
Ord/Valley County	4,617	1,854.22	\$2,308.50	\$1.25	33.01	\$69.94
Greeley county	2,714	1,089.96	\$1,357.00	\$1.25	19.40	\$69.94
Sherman County	3,318	1,332.53	\$1,659.00	\$1.25	23.72	\$69.94
Wheeler County	886	355.82	\$443.00	\$1.25	6.33	\$69.94
Garfield County	1,902	763.86	\$951.00	\$1.25	13.60	\$69.94
Loup County	712	285.94	\$356.00	\$1.25	5.09	\$69.94
Blaine County	583	234.14	\$291.50	\$1.25	4.17	\$69.94
Howard County	6,567	2,637.35	\$3,283.50	\$1.25	46.94	\$69.94
Reach Out Counties -						
Mentioned city's above						
Harlan County	3,039	1,220.48	\$1,519.50	\$1.25	21.72	\$69.94
Franklin County	2,363	949.00	\$1,181.50	\$1.25	16.89	\$69.94
Webster County	2,582	1,036.95	\$1,291.00	\$1.25	18.46	\$69.94
Nuckolls County	4,367	1,753.82	\$2,183.50	\$1.25	31.22	\$69.94
Thayer County	4,011	1,610.84	\$2,005.50	\$1.25	28.67	\$69.94
Filmore County	4,504	1,808.84	\$2,252.00	\$1.25	32.20	\$69.94
Clay County	4,652	1,868.27	\$2,326.00	\$1.25	33.26	\$69.94
Keya Paha County	303	121.69	\$151.50	\$1.25	2.17	\$69.94
Brown County	2,256	906.02	\$1,128.00	\$1.25	16.13	\$69.94
Antelope County	2,452	984.74	\$1,226.00	\$1.25	17.53	\$69.94
Boone County	1,239	497.59	\$619.50	\$1.25	8.86	\$69.94
Boyd County	1,020	409.64	\$510.00	\$1.25	7.29	\$69.94
Cass County	3,631	1,458.23	\$1,815.50	\$1.25	25.96	\$69.94
Clay County	3,205	1,287.15	\$1,602.50	\$1.25	22.91	\$69.94
Dixon County	3,881	1,558.63	\$1,940.50	\$1.25	27.74	\$69.94
Holt County	5,506	2,211.24	\$2,753.00	\$1.25	39.36	\$69.94
Knox County	4,332	1,739.76	\$2,166.00	\$1.25	30.97	\$69.94
Madison County	4,322	1,735.74	\$2,161.00	\$1.25	30.90	\$69.94
Otoe County	3,096	1,243.37	\$1,548.00	\$1.25	22.13	\$69.94
Pierce County	2,983	1,197.99	\$1,491.50	\$1.25	21.32	\$69.94
Polk county	1,554	624.10	\$777.00	\$1.25	11.11	\$69.94
Rock County	98	39.36	\$49.00	\$1.25	0.70	\$69.94
Saunders County	4,084	1,640.16	\$2,042.00	\$1.25	29.19	\$69.94
Seward County	2,875	1,154.62	\$1,437.50	\$1.25	20.55	\$69.94
Washington County	9,516	3,821.69	\$4,758.00	\$1.25	68.03	\$69.94
Wayne County	6,313	2,535.34	\$3,156.50	\$1.25	45.13	\$69.94
	343,537	137,966.67	\$148,594.00	\$1.25	2,455.81	\$69.94
	individuals in area	# of households in area	Cash Match	Average cost household	Households expected to participate	Cost for a participating household



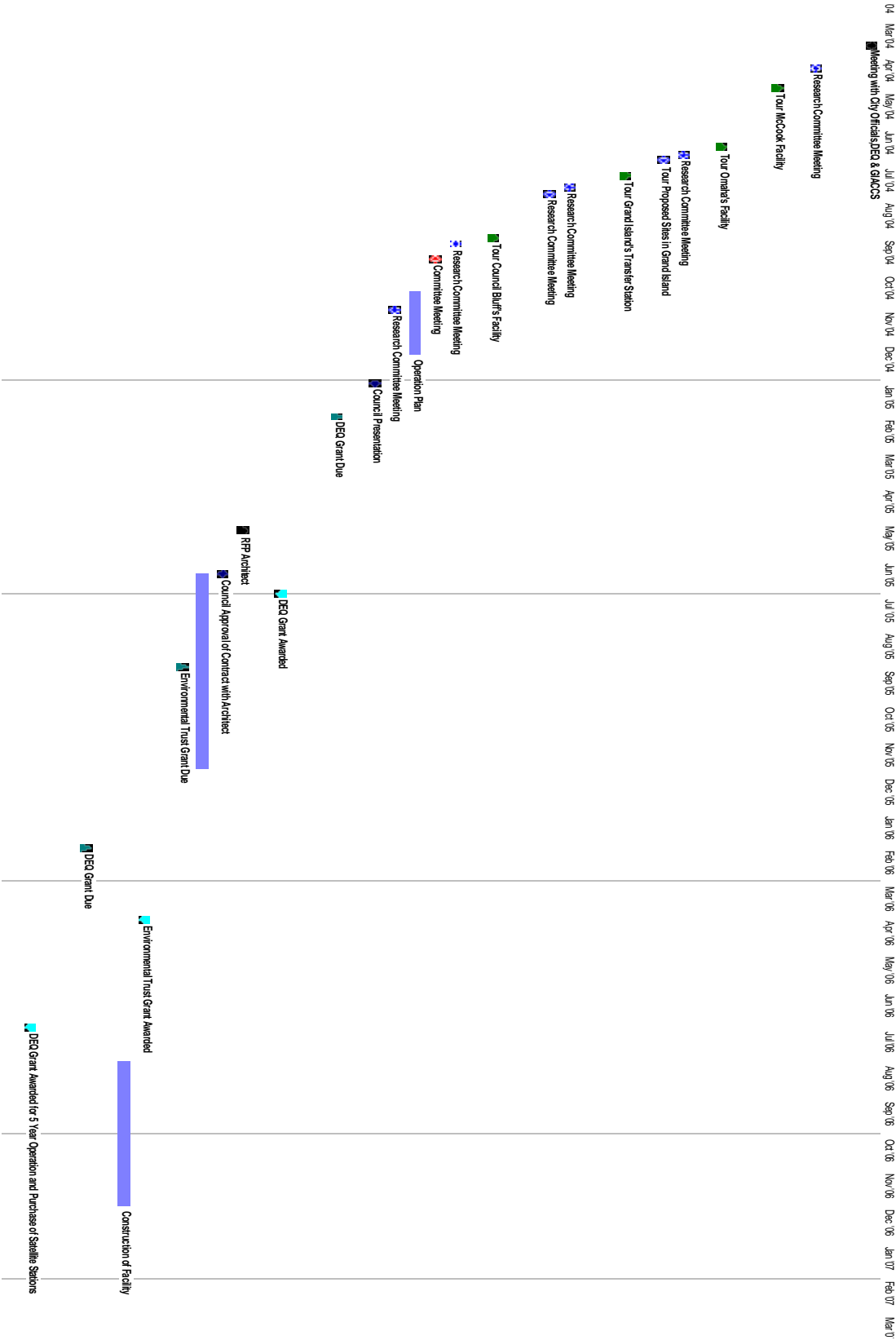
# Central Nebraska Household Hazardous Waste Collection Facility

## Permanent household hazardous waste facility household figures for participating communities at a 2.5% participation rate

Figures broken down per household

Community/Village/County	Population	# Households (Census average of 2.49)	Cash Match @ 1.245(2.49*.50) percapita	Cost per Household for total households	Expected Households Participatin g @	Actual Cost per Participating Household
Albion	1,797	721.69	\$898.50	\$1.25	18.04	\$49.80
Atkinson	1,244	499.60	\$622.00	\$1.25	12.49	\$49.80
Avoca	270	108.43	\$135.00	\$1.25	2.71	\$49.80
Ashland	2,262	908.43	\$1,131.00	\$1.25	22.71	\$49.80
Bassett	743	298.39	\$371.50	\$1.25	7.46	\$49.80
Butte	366	146.99	\$183.00	\$1.25	3.67	\$49.80
Beaver Crossing	457	183.53	\$228.50	\$1.25	4.59	\$49.80
Bee	223	89.56	\$111.50	\$1.25	2.24	\$49.80
Concord	156	62.65	\$78.00	\$1.25	1.57	\$49.80
Carroll	238	95.58	\$119.00	\$1.25	2.39	\$49.80
Cedar Rapids	407	163.45	\$203.50	\$1.25	4.09	\$49.80
Dixon	108	43.37	\$54.00	\$1.25	1.08	\$49.80
Douglas	231	92.77	\$115.50	\$1.25	2.32	\$49.80
Eagle	1,105	443.78	\$552.50	\$1.25	11.09	\$49.80
Elgin	735	295.18	\$367.50	\$1.25	7.38	\$49.80
Fort Calhoun	856	343.78	\$428.00	\$1.25	8.59	\$49.80
Glenvil	332	133.33	\$166.00	\$1.25	3.33	\$49.80
Louisville	998	400.80	\$499.00	\$1.25	10.02	\$49.80
Meadow Grove	311	124.90	\$155.50	\$1.25	3.12	\$49.80
Neligh	1,651	663.05	\$825.50	\$1.25	16.58	\$49.80
Newman Grove	797	320.08	\$398.50	\$1.25	8.00	\$49.80
Norfolk	23,516	9,444.18	\$11,758.00	\$1.25	236.10	\$49.80
Niobrara	379	152.21	\$189.50	\$1.25	3.81	\$49.80
Osceola	921	369.88	\$460.50	\$1.25	9.25	\$49.80
Plainview	1,353	543.37	\$676.50	\$1.25	13.58	\$49.80
Plattsmouth	6,887	2,765.86	\$3,443.50	\$1.25	69.15	\$49.80
Seward	6,427	2,581.12	\$3,213.50	\$1.25	64.53	\$49.80
Shelby	690	277.11	\$345.00	\$1.25	6.93	\$49.80
Unadilla	342	137.35	\$171.00	\$1.25	3.43	\$49.80
Utica	844	338.96	\$422.00	\$1.25	8.47	\$49.80
Wahoo	3,942	1,583.13	\$1,971.00	\$1.25	39.58	\$49.80
Yutan	1,216	488.35	\$608.00	\$1.25	12.21	\$49.80
Holdrege/Phelps County	5,636	2,263.45	\$2,818.00	\$1.25	56.59	\$49.80
Central City/Merrick County	8,204	3,294.78	\$4,102.00	\$1.25	82.37	\$49.80
Aurora/Hamilton County	9,403	3,776.31	\$4,701.50	\$1.25	94.41	\$49.80
Hastings/Adams County	24,064	9,664.26	\$12,032.00	\$1.25	241.61	\$49.80
Minden/Kearney County	3,815	1,532.13	\$1,907.50	\$1.25	38.30	\$49.80
Fullerton/Nance County	2,493	1,001.20	\$1,246.50	\$1.25	25.03	\$49.80
Kearney/Bufalo County	33,571	13,482.33	\$16,785.50	\$1.25	337.06	\$49.80
York/York County	9,804	3,937.35	\$4,902.00	\$1.25	98.43	\$49.80
Fremont/Dodge County	28,911	11,610.84	\$14,455.50	\$1.25	290.27	\$49.80
Grand Island/Hall County	46,349	18,614.06			465.35	\$0.00
Ord/Valley County	4,617	1,854.22	\$2,308.50	\$1.25	46.36	\$49.80
Greeley county	2,714	1,089.96	\$1,357.00	\$1.25	27.25	\$49.80
Sherman County	3,318	1,332.53	\$1,659.00	\$1.25	33.31	\$49.80
Wheeler County	886	355.82	\$443.00	\$1.25	8.90	\$49.80
Garfield County	1,902	763.86	\$951.00	\$1.25	19.10	\$49.80
Loup County	712	285.94	\$356.00	\$1.25	7.15	\$49.80
Blaine County	583	234.14	\$291.50	\$1.25	5.85	\$49.80
Howard County	6,567	2,637.35	\$3,283.50	\$1.25	65.93	\$49.80
Reach Out Counties - Mentioned city's above					0.00	
Harlan County	3,039	1,220.48	\$1,519.50	\$1.25	30.51	\$49.80
Franklin County	2,363	949.00	\$1,181.50	\$1.25	23.72	\$49.80
Webster County	2,582	1,036.95	\$1,291.00	\$1.25	25.92	\$49.80
Nuckolls County	4,367	1,753.82	\$2,183.50	\$1.25	43.85	\$49.80
Thayer County	4,011	1,610.84	\$2,005.50	\$1.25	40.27	\$49.80
Filmore County	4,504	1,808.84	\$2,252.00	\$1.25	45.22	\$49.80
Clay County	4,652	1,868.27	\$2,326.00	\$1.25	46.71	\$49.80
Keya Paha County	303	121.69	\$151.50	\$1.25	3.04	\$49.80
Brown County	2,256	906.02	\$1,128.00	\$1.25	22.65	\$49.80
Antelope County	2,452	984.74	\$1,226.00	\$1.25	24.62	\$49.80
Boone County	1,239	497.59	\$619.50	\$1.25	12.44	\$49.80
Boyd County	1,020	409.64	\$510.00	\$1.25	10.24	\$49.80
Cass County	3,631	1,458.23	\$1,815.50	\$1.25	36.46	\$49.80
Clay County	3,205	1,287.15	\$1,602.50	\$1.25	32.18	\$49.80
Dixon County	3,881	1,558.63	\$1,940.50	\$1.25	38.97	\$49.80
Holt County	5,506	2,211.24	\$2,753.00	\$1.25	55.28	\$49.80
Knox County	4,332	1,739.76	\$2,166.00	\$1.25	43.49	\$49.80
Madison County	4,322	1,735.74	\$2,161.00	\$1.25	43.39	\$49.80
Otoe County	3,096	1,243.37	\$1,548.00	\$1.25	31.08	\$49.80
Pierce County	2,983	1,197.99	\$1,491.50	\$1.25	29.95	\$49.80
Polk county	1,554	624.10	\$777.00	\$1.25	15.60	\$49.80
Rock County	98	39.36	\$49.00	\$1.25	0.98	\$49.80
Saunders County	4,084	1,640.16	\$2,042.00	\$1.25	41.00	\$49.80
Seward County	2,875	1,154.62	\$1,437.50	\$1.25	28.87	\$49.80
Washington County	9,516	3,821.69	\$4,758.00	\$1.25	95.54	\$49.80
Wayne County	6,313	2,535.34	\$3,156.50	\$1.25	63.38	\$49.80
	343,537	137,966.67	\$148,594.00	\$1.25	3,449.17	\$49.80
	individuals in area	# of households in area	Cash Match	Average cost household	Households expected to participate	Cost for a participating household

Central Nebraska Household Hazardous Waste Facility  
Time Line



## Central Nebraska Household Hazardous Waste Collection Facility

---

<sup>1</sup> U.S. Department of Commerce, Economics and Statistics Administration, U.S. Census Bureau, 1997 U.S. & Nebraska Economic Census – Administrative and Support and Waste Management and Remediation Services

# **CENTRAL NEBRASKA HOUSEHOLD HAZARDOUS WASTE & RECYCLING FACILITY**

---

**Creating a Cleaner  
Environment**

**Together**

**Presented  
By**

**CITY OF  
GRAND ISLAND**

---

**GRAND ISLAND AREA CLEAN COMMUNITY SYSTEM**



# HOUSEHOLD HAZARDOUS WASTE & RECYCLING FACILITY COMMITTEE

---

**Tammie Blaha**

Director of Marketing  
Good Will Industries

**Greg Eirick**

Diamond Vogel Paint

**Mitch Nickerson**

Council Member  
City of Grand Island

**Paul Briseno**

Assistant to the City Administrator  
City of Grand Island

**Fred Hotz**

Fire Prevention Division Chief  
City of Grand Island Fire Department

**Steve Riehle**

Public Works Director  
City of Grand Island

**Bud Buettner**

Assistant Public Works Director  
City of Grand Island

**Troy Hughes**

Fire Training Division Chief  
City of Grand Island Fire Department

**Jim Rowell**

Fire Chief  
City of Grand Island

**Betty Curtis**

Executive Director  
Grand Island Area Clean  
Community System

**Ryan King**

Assistant Executive Director  
Central District Health Department

**Jeff Wattier**

Solid Waste Superintendent  
City of Grand Island

**Joni Kuzma**

Development Specialist  
City of Grand Island



# HOUSEHOLD HAZARDOUS WASTE

---

## What is Household Hazardous Waste?

- Cleaners
- Paint/Paint Related Materials
- Aerosols
- Corrosives
- Fuel
- Fire Extinguishers
- Batteries
- Automotive Products
- Pesticides, Herbicides
- Lawn, Garden Chemicals
- Poisons
- Mercury/Mercury Related Materials
- Electronics

- Why are these products considered hazardous waste?
- Who deems these items as household hazardous waste?



# **FACTS ABOUT HOUSEHOLD HAZARDOUS WASTE**

---

- **The average U.S. household produces or generates more than 20 pounds of HHW materials per year**
- **As much as 100 pounds of HHW can accumulate in the home**
- **The majority of household hazardous waste in Central Nebraska is disposed of improperly and can:**
  - **Contaminate wastewater treatment systems**
  - **Pollute rivers, lakes, and streams**
  - **Present hazards to children, pets and Firemen**
  - **Contaminate ground water and surface water**
- **There are no permanent, dedicated facilities accepting these items in Central Nebraska**



# CENRAL NEBRASKA HOUSEHOLD HAZARSOUS WASTE FACTS

- Central Nebraska residents can produce 2,820,000 pounds of household hazardous waste per year
- Grand Island Clean Community System has collected 507,275 pounds of household hazardous waste from 9,540 households from Central Nebraska over the past 6 years

Paint & Related Materials	Corrosive liquid	Pesticides	Oxidizing Substances	Computers	Lead Acid Batteries	Oil	Total Pounds of Collected HHW	#of Households Participating	Average lb collected per hh
231,572	10,724	42,551	531	28,000	103,775	90,122	507,275	9,540	53.17
							101455 average per year lb collected	1908 average per year hh participating	1.38% Average % of hh participating from Central Nebraska

The following facts and figures were derived from surveys taken at Grand Island Area Clean Community System contracted household hazardous waste collection events



CITY OF  
GRAND ISLAND  
GIACCS



# GRAND ISLAND/HALL HOUSEHOLD HAZARDOUS WASTE FACTS

■Grand Island/Hall County residents can produce 430,000 pounds of household hazardous waste per year

■Grand Island Clean Community System has collected 148,293 pounds of household hazardous waste from 3,381 Grand Island households in the past 6 years

Paint & Related Materials	Corrosive liquid	Pesticides	Oxidizing Substances	Computers	Lead Acid Batteries	Oil	Total Pounds of Collected HHW	#of Households Participating	Average lb collected per hh
84,043	2,269	11,461	120	6,100	17,000	27,300	148,293	3,381	43.86
							29,658.60 average per year lb collected	676.2 average per year hh participating	1.28% Average % of hh participating from Grand Island Area

The following facts and figures were derived from surveys taken at Grand Island Area Clean Community System contracted household hazardous waste collection events



CITY OF  
GRAND ISLAND  
GIACCS

# GRAND ISLAND/HALL HOUSEHOLD HAZARDOUS WASTE FACTS

■ **75% of residents from Grand Island/Hall County, who participated in the Grand Island Area Clean Community System household hazardous waste collection days would like a permanent site**

**2003**

City/County	Requesting Permanent Sites	Requesting more HHW Collection Days	Participating household of survey that want a permanent facility in the Grand Island/Hall Area
Grand Island/Hall	281	95	75%

The following facts and figures were derived from surveys taken at Grand Island Area Clean Community System contracted household hazardous waste collection events



# **CENTRAL NEBRASKA'S HOUSEHOLD HAZARDOUS WASTE COLLECTION FACILITY**

---

- **A central Nebraska household hazardous waste facility could potentially serve 350,000 residents in a 29 county area with 2 employees**
- **Will be a part of a one stop center**
- **Collections will increase**
  - **Accessible household hazardous waste & recycling facility**
- **Facility needs to consist of at least 9,500 sq ft which includes:**

•Office	•Conference/Education Room	•Restrooms
•Storage	•Showers	•Lab
•SWAP SHOP	•Locker rooms	•Work Area
- **The proposed central household hazardous waste collection facility could have satellite units located in strategically located communities to create a regional household hazardous waste area**



# CENTRAL NEBRASKA'S HOUSEHOLD HAZARDOUS WASTE COLLECTION FACILITY

## ■ Construction Cost

	Environmental Trust 75%	Match 25%	Total
Building 9,500 sq ft @ \$110 sq ft	\$783,750	\$261,250	\$1,045,000

DEQ Funds 100%	Total
Satellite 10 @ \$10,000 each	\$100,000

## ■ Operational Cost

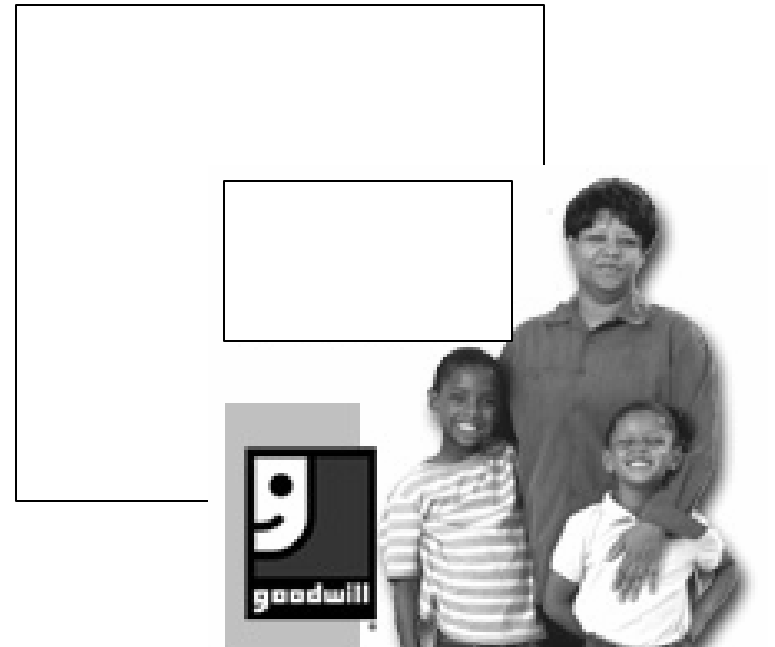
■ DEQ funds 100% operation through a 5 year operational grant

DEQ Funds 100%	Total
Total Operational Cost	\$320,300



# RECYCLING FACILITY

- **Goodwill Industries of Greater Nebraska Inc.**
  - **Need**
  - **Collaborations**
  - **Location**
  - **Type of recycling**
- **Costs**
  - **Equipment from H&H**
  - **Operations**
  - **Construction**



# CENTRAL NEBRASKA'S HOUSEHOLD HAZARDOUS WASTE COLLECTION & RECYCLING FACILITY

Central Nebraska HHW Collection Facility	Start	Finish
Department of Environmental Quality Grant Due (Requesting funding for Facility Architect)	Tue 2/1/05	Tue 2/1/05
Department of Environmental Quality Grant Awarded	Fri 7/1/05	Fri 7/1/05
Request For Proposal for Architect	Mon 5/9/05	Mon 5/9/05
Approval of Contract with Architect	Tue 6/14/05	Tue 6/14/05
Design of Facility	Mon 6/13/05	Fri 11/25/05
Environmental Trust Grant Due (Requesting funding for Construction of Facility)	Thu 9/1/05	Thu 9/1/05
Environmental Trust Grant Awarded	Mon 4/3/06	Mon 4/3/06
Construction of Central Nebraska Household Hazardous Waste Facility	Tue 8/1/06	Fri 12/1/06
Department of Environmental Quality Grant Due (Requesting funding for a 5 year Operation & Satellite station grant)	Wed 2/1/06	Wed 2/1/06
Department of Environmental Quality Grant Awarded	Mon 7/3/06	Mon 7/3/06





# **CENTRAL NEBRASKA HOUSEHOLD HAZARDOUS WASTE & RECYCLING FACILITY**



CITY OF  
GRAND ISLAND  
GIACCS

