



City of Grand Island

Tuesday, August 07, 2007

Special Council Session

Item I1

#2007-187 - Approving Full Time Equivalents (FTE's) for Fiscal Year 2007-2008

Staff Contact: David Springer

Council Agenda Memo

From: Dave Springer, Finance Director

Meeting: August 7, 2007

Subject: Approve 2007-2008 FTE Requests

Item #'s: I-1

Presenter(s): Dave Springer, Finance Director

Background

At the June 19 council study session, staff presented departmental requests for additional personnel or Full Time Equivalent (FTE) employees supported by justification memos from appropriate directors detailing their needs. Last year saw a net reduction in FTE's, but with the city's growth and the expansion of the City's services and operations, some additional staffing becomes necessary. Cost concerns were expressed by council and administration has responded by scaling back that request by five FTEs and \$198,405. The revised request is for 4.77 FTE's and \$155,613 in the General Fund and 7.27 FTE's and \$260,844 city-wide.

Discussion

Administration feels that a further reduction in FTE requests will begin to compromise the delivery of services performed by these departments and that these are appropriate staffing changes for incorporation into the 2007-2008 budget.

Alternatives

It appears that the Council has the following alternatives concerning the issue at hand. The Council may:

1. Approve the recommendation for requested FTEs.
2. Modify the request to meet the policy direction of the Council.
3. Postpone the issue to a future date.

Recommendation

City Administration recommends that the City Council approve the FTE requests as presented for incorporation into the final budget.

Sample Motion

Move to approve the FTE requests for incorporation into the 2007-2008 budget.

SUMMARY OF REQUESTED FTE'S, FISCAL YEAR 2007-2008

(Five Year Financial Impact)

		PERSONAL COST					
Dept No.	Department Name	FTE Recommended	Changes	2008-9 Estimate	2009-10 Estimate	2010-11 Estimate	2011-12 Estimate
GENERAL GOVERNMENT							
114	Finance						
	Less: Accounting Clerk	(0.580)	(\$16,377)	(\$16,868)	(\$17,374)	(\$17,896)	(\$18,432)
PUBLIC SAFETY							
223	Police						
	Custodian	1.000	\$36,307	\$37,396	\$38,518	\$39,674	\$40,864
	School Crossing Guard	0.350	\$5,242	\$5,399	\$5,561	\$5,728	\$5,900
	Total Police Services	1.350	\$41,549	\$42,795	\$44,079	\$45,402	\$46,764
226	Emergency Management						
	Emergency Management Coordinator	1.000	\$31,556	\$32,503	\$33,478	\$34,482	\$35,517
	Emergency Management Clerk	(1.000)	(\$30,459)	(\$31,373)	(\$32,314)	(\$33,283)	(\$34,282)
	Communications Specialist	1.000	\$43,648	\$44,957	\$46,306	\$47,695	\$49,126
	Total Emergency Management	1.000	\$44,745	\$46,087	\$47,470	\$48,894	\$50,361
COMMUNITY ENVIRONMENT & LEISURE							
443	Library						
	Library Assistant - Full Time	1.000	\$40,914	\$42,141	\$43,406	\$44,708	\$46,049
448	Heartland Shooting Park						
	Seasonal Worker	2.000	\$44,782	\$46,125	\$47,509	\$48,935	\$50,403
PROPERTY TAX REQUIREMENT							
	GENERAL GOVERNMENT	(0.580)	(\$16,377)	(\$16,868)	(\$17,374)	(\$17,896)	(\$18,432)
	PUBLIC SAFETY	2.350	\$86,294	\$88,883	\$91,549	\$94,296	\$97,125
	COMMUNITY ENVIRONMENT & LEISURE	3.000	85696.000	88266.880	90914.886	93642.333	96451.603
GENERAL FUND PROPERTY TAX REQUIREMEN		4.770	\$155,613	\$160,281	\$165,090	\$170,043	\$175,144
=====							
ENTERPRISE FUNDS							
505	Sanitary Landfill						
	Equipment Operator	1.000	\$33,686	\$34,697	\$35,737	\$36,810	\$37,914
510	Golf Course						
	Seasonal Part-Time	0.500	\$10,140	\$10,444	\$10,758	\$11,080	\$11,413
	Maintenance Worker II	(1.000)	(\$58,881)	(\$60,647)	(\$62,467)	(\$64,341)	(\$66,271)
	Total Golf Course	(0.500)	(\$48,741)	(\$50,203)	(\$51,709)	(\$53,261)	(\$54,858)
520	Electric Utility						
	Electrical Engineer	1.000	\$61,393	\$63,235	\$65,132	\$67,086	\$69,098
	Wireworker II	1.000	\$58,893	\$60,660	\$62,480	\$64,354	\$66,285
	Total Electrical Utility	2.000	\$120,286	\$123,895	\$127,611	\$131,440	\$135,383
TOTAL ENTERPRISE FUNDS		2.500	\$105,231	\$108,388	\$111,640	\$114,989	\$118,438
TOTAL CITY		7.270	\$260,844	\$268,669	\$276,729	\$285,031	\$293,582

Council Agenda Memo

From: Steve Paustian, Park and Recreation Director

Meeting: May 2, 2006

Subject: Approving Full Time Equivalents (FTE) for Fiscal 2007/2008

Item #'s: I-1

Presenter(s): David Springer, Finance Director

Background

Over the past four years many components of the Heartland Public Shooting Park (HPSP) have been completed or are nearing completion. As more venues are or are near completion the park is drawing increasing numbers of shooting enthusiasts. The shotgun venues, skeet, trap and sporting clays have been available to the public for approximately three years. The rifle and pistol ranges, while not totally finished have been put into limited service as well. This fall, campground construction will begin with the facility available for camping this fall or early next spring.

Discussion

With new venues becoming operational, staffing requirements need to be addressed (see business plan). In order to provide SAFE operations, additional programming, and proper maintenance, increased levels of staffing are required. Staff is requesting the addition of two FTE's to aid in the operation of the HPSP. These FTE's will be part-time and will not be eligible for benefits, maximizing the number of hours the two FTE's can provide at the minimum cost to the City.

Alternatives

It appears that the Council has the following alternatives concerning the issue at hand. The Council may:

1. Move to approve
2. Refer the issue to a Committee
3. Postpone the issue to future date

4. Take no action on the issue

Recommendation

City Administration recommends that the Council allow for the additional two FTE's in the 2007/2008 Heartland Public Shooting Park budget.

Sample Motion

Motion to approve FTE request.

Heartland Public Shooting Park



Business Plan

Executive Summary

The Grand Island City Council has set the goal of continued support for the development of the Heartland Public Shooting Park since 2005. The completion of the final phase of development for larger venues will create a new goal for the Park, establishing a stable and predictable operating expenses and revenues.

In establishing this financial stability, management must formulate the most operable level of revenues verses expenses. To complete this peak efficiency, management and staff must calculate each venue and total operation to determine the most revenue producing venues and most attended activities. The equation for determining these targeted revenue sources for each venue should be calculated as followed:

Increased attendees/shooters => (increased revenues per venue – related increased costs of operation per venue) = Net revenue per venue.

Calculating this formula will allow management to target greater revenue producing venues while continuing to market more popular venues such as skeet and trap. This formula will furthermore assist in establishing a more concise strategic plan to increase attendance/shooters in more specific venues.

An example of these high revenue producing venues would be the RV Park. The RV Park will produce a grater ratio of revenue to expenses as operational expenses are minimal. Skeet and trap venues will have a much smaller revenue ratio as operational expenses are higher when compared to revenue. The reason for this is that every target has a much higher cost associated with it, while cowboy action or the targets of rifle and pistol venues are much less expensive and could be used various times.

An additional tool that will increase accuracy of budgeting revenues and expenditures would be a point of sale software. Over the past few years the Heartland Public Shooting Park has worked with City IT staff to write a program for the park. However with a large workload, change over in staff, the priority of the project, and the intense complexity of point of sale software that was requested caused the completion of the software in-house to stall.

Purchasing the point of sale software would be recommended and implementation by the beginning of the 2007/08 fiscal year. The software should obtain basic information such as:

- ✓ First and Last Name of the Shooter
- ✓ Email
- ✓ Date of Sale
- ✓ Zip Code
- ✓ Venues Shot
- ✓ Number of Rounds
- ✓ Revenue
- ✓ The software must also include the complexity of the rate structure

This software would calculate the number of shooters per venue annually, revenues verses expenses per venue, as well as needed marking information. Trends would be more accurate and operations of venues would be more efficient, by using this software.

Furthermore this park has a significant economical impact on Hall County and Grand Island as it is and will continue to be an area attraction for all types of shooting enthusiast as more venue options open.

Volunteers play an essential role in the operations of the park. The original engineers estimate for the development of the park at this point was \$8,227,194. However the parks capital cost to date is \$3,810,000. The savings of \$4,417,194 can be contributed to the volunteer sweat equity. An attached list describes potential volunteer job opportunities for volunteers to meet their 50 hour requirement to obtain the discount as approved by City Council. The only problem utilizing volunteers pose is that they do not have a consistent work schedule or hours. Having a regular maintenance schedule for the upkeep of the park requires a stable workforce.

Currently the Heartland Public Shooting Park has 1.5 full-time equivalents which accounts for one Park Superintendent and 0.5 full time equivalent of a seasonal worker to operate the 412.5 acre park. The addition of 2 full time equivalents as requested to Council would optimize the operation of the facility creating a more efficient and effective park.

The addition of these requested positions would allow the Park Superintendent the ability to oversee procurement, provide necessary reports, more efficient supervision of staff and volunteers, increased hours of operations, and ultimately grow the park into a national attraction.

The following business plan for the Heartland Public Shooting Park is a report of operations and capital expense to date, as well as estimated projections for the next five years. As each year brings the opening of a new venue till 2009 it is recommended that fees, expenses, and revenues continue to be calculated with the most current figures to produce the most accurate budgeting. Therefore, it is recommended that this business plan be updated annually and presented to council.

History

In 1794 the Grand Island Parks and Recreation Department developed Skeet Ranges located at the City well field site on South Locust Street four miles south of Grand Island. The Grand Island Skeet and Sporting Clay Club, Inc. was formed during this same time to provide the management needed to operate the facility.

In 2001 the Grand Island Skeet and Sporting Clays Club was required to move from the South Locust site with the arrival of the South Locust/Interstate 80 interchange project. The Environmental Impact Statement for the interchange project contained a condition requirement that the existing Grand Island Skeet and Sporting Clays Club move from the well field owned and operated by the City of Grand Island adjacent to the planned highway improvement site. The existing club site was too close to the intended right-of-way to allow an adequate shotfall zone and was not considered an acceptable long term use for the property on the well field.

City officials and representatives of the Club considered multiple relocation sites. In 2001 the United States Army Corps. of Engineers transferred the Cornhusker Army Ammunitions Plant to Hall County, a Re-Use Committee was formed. This committee was tasked with the job of determining how the property would be handled and the proper designation of the land.

Realizing the potential development for a broad range of recreational uses, the City purchased 412 acres of ground for \$350,000 with the financial assistance of the Grand Island Skeet and Sporting Clay Club. The Club raised \$175,000 from the Reynolds Foundation and Kaufmann-Cummings Foundation.

A committee of citizens and city officials was established from 1997 to 2001 to determine a recreational use with an emphasis on shooting sports for the new location. Through experience, knowledge, and marketing information obtained, a plan was created to encompass a variety of outdoor venues. Various meetings were held in the community over the course of five years to explain the project and acquire support from necessary entities that would play an important role in the success of the proposed park. The ultimate vision of the park is to establish a destination for outdoor recreation and tourism in the central United States.

The completion of a five year study presented a three phase plan for the development of the shooting park over six years as well as the hiring of a full-time shooting Park Superintendent to manage the facility.

Phase I

- Trap
- Skeet
- Sporting Clay Ranges
- Support Facilities

Phase II

- Pistol Range
- Cowboy Action Range
- Rifle Range
- 7.5-acre Lake

Phase III

- Campground
- Picnic Shelters

**Definitions of each venue start on page 9, costs and % of completed venues can be found on page 5.*

In 2004 the City of Grand Island entered into an agreement with the Grand Island Skeet and Sporting Clays Club. The agreement granted permission to utilize and manage the facility for skeet, trap and sporting clays and changed the name of the club to the Heartland Public Shooting Park. The agreement furthermore required the City of Grand Island and the Club to contribute funding for the development of the facility. The Club was required to contribute over \$200,000 and the City assisted in obtaining funding from various sources, including local foundations and businesses, and loaned the Club \$100,000, which was repayable to the City over a period of five years. Once the improvements to the facility were completed the property would belong to the City of Grand Island. **This document can be found on page 28.*

In 2005 The City entered into a second agreement which amended the previous agreement with the Heartland Public Shooting Park to create the current structure of the park. This amendment created the position of Shooting Park Superintendent and made the responsibility of management by the City of Grand Island. The agreement also established a volunteer discount. An advisory board comprised of active members was also created to offer support and guidance to the City Parks and Recreation Department Director and Shooting Park Superintendent regarding the needs and future operation of the facility. This agreement is to be reviewed every two years from October 1, 2005 and amended as needed for the continued success and operation of the facility. ** This document can be found on page 30.*

Location

The Heartland Public Shooting Park is located at 6788 West Husker Highway or two miles west of Highway 30 on Husker Highway. The 412.5 acres of land offers multiple venues for outdoor enthusiasts.

Hours of Operation

Park Hours	
Sunday	Noon - 5:00 p.m.
Monday	Closed
Tuesday	Closed
Wednesday	5:00 - 10:00 p.m.
Thursday	5:00 - 10:00 p.m.
Friday	Closed
Saturday	9:00 a.m. - 5:00 p.m.

Rifle Range Hours	
Saturday	Noon - 4:30 p.m.
Sunday	Noon - 4:30 p.m.

League shooting, registered shooting, special events and corporate events are conducted outside of these regularly scheduled hours of operation.

**Please refer to our website for the most current park hours and possible cancellations.*

Operating Expenses vs. Revenue

Fiscal Year	Operating Expenses	% Change	Revenues	% Change	Ending Balance
2006 Actual	\$ 226,093.19		\$ 164,976.41		\$ (61,116.78)
2007 Projected	\$ 261,266.00	15.56%	\$ 125,204.76	-24.11%	\$ (136,061.24)
2008 Budgeted	\$ 411,950.00	57.67%	\$ 277,312.00	121.49%	\$ (134,638.00)
2009 Budgeted	\$ 436,667.00	6.00%	\$ 332,774.40	20.00%	\$ (103,892.60)
2010 Budgeted	\$ 462,867.02	6.00%	\$ 392,673.79	18.00%	\$ (70,193.23)
2011 Budgeted	\$ 490,639.04	6.00%	\$ 455,501.60	16.00%	\$ (35,137.44)
2012 Budgeted	\$ 520,077.38	6.00%	\$ 519,271.82	14.00%	\$ (805.56)
2013 Budgeted	\$ 551,282.03	6.00%	\$ 584,180.80	12.50%	\$ 32,898.77

**The complete calculation of operational expenses and revenues can be found on pages 14 and 15.*

It is important to note that the 2006, 2007, and 2008 years are irregular with the additions of many venues that directly increase the operational expenses and revenues. An example of this is the addition of the rifle and pistol ranges in 2007. This venue increased revenue with increased shooters. However the venue also increased expenses through additional maintenance and additional personal needed to operate the venue. With the completion of Phase III in 2009, the Heartland Public Shooting Park will see a more stable increase of operating expense to revenue ratio develop.

A decrease in 2007's revenues reflects the loss of the State Sporting Clays Championship event that realized over \$30,000 in revenue during the 2006 season. Also operational expenses increased dramatically in 2008 with the proposed increase of two full time equivalents.

In the years 2009 to 2013 it is estimated that operating expenses will level out while an aggressive marketing campaign will increase revenues. Potential revenues percentages have been set by the Heartland Public Shooting Park Advisory Board and the Parks Department Director.

All figures reported are subject to change as the fluctuation of shooters can be unpredictable as venues are added. The addition of full time equivalents will assist in providing stability through increased hours of operation, completion of scheduled maintenance and overall efficiency.

It is suggested after 2008, numbers should be adjusted accordingly.

Heartland Public Shooting Park Fees				
Fees	The Parks & Recreational Director shall establish fees for miscellaneous merchandise sales, tournament and league play, and special events and promotions.	2006	2007	2008 Proposed
	Adult Skeet/Trap per round (25 targets/round)	\$5.00	\$5.00	\$5.00
	Skeet/Trap Punch Card rate - 12 rounds @ 4.34/round	\$55.00	\$55.00	\$55.00
	Skeet/Trap - Youth Rate (age 18 & under)	\$2.50	\$3.50	\$3.50
	Adult Sporting Clays per round (50 targets/round)	\$15.00	\$15.00	\$15.00
	Sporting Clays - Punch Card rate - 5 rounds @ 13.27/round	\$70.00	\$70.00	\$70.00
	Sporting Clays - Youth Rate (age 18 & under)	\$7.50	\$7.50	\$7.50
	Counters - trap, skeet and sporting clays		.22 per target	.22 per target
	5 Stand Sporting Adult		\$6.00	\$6.00
	5 Stand Sporting Youth		\$4.00	\$4.00
	Daily fee Rifle/Handgun Adult		\$10.00	\$10.00
	Daily fee Rifle/Handgun Youth		\$5.00	\$5.00
	Punch Cards (6 days at \$7.50)		\$45.00	\$45.00
	Family Pass (12 months)		\$150.00	\$150.00

**The calculation of fees for trap and skeet can be found on page 16.*

Fees have stayed constant for the past three years. Additional fees have been added as new venues open. Formulation of skeet and trap fees includes capital purchases, operational expenses, and personnel costs. It is suggested that all venues with fees include a written formula that encompasses these costs to the user. Furthermore, the fees should be compared locally and nationally with comparable venues as not to overprice the fees. Number of shooters must also be factored into this formula. This process should be completed annually.

Capital Projects

Phase I			
Percentage Completed	Venue	Engineers Estimated Cost	Actual Cost
100%	CAAP Purchase (421 Acres)	\$350,000	\$350,000
100%	Trap/Skeet/5 Stand	\$1,200,000	\$800,000
100%	Sporting Clay Ranges	\$800,000	\$400,000
100%	Support Facilities	\$600,000	\$240,000
100%	Roads/Other	\$110,000	\$40,000
100%	Demolition	\$100,000	\$30,000
Total Phase I		\$3,160,000	\$1,860,000
Phase II			
100%	Housing Facility	\$150,000	\$150,000
95%	Pistol Range/Cowboy Action	\$4,417,194	\$1,800,000
95%	Rifle Range		
95%	7.5-acre Lake		
Total Phase II		\$4,567,194	\$1,950,000
Phase III			
10%	Campground (2007/08 ¼ Budgeted)	\$300,000	\$0
0%	Picnic Shelters (2007/08 ¼ Budgeted)	\$150,000	\$0
0%	Archery	\$50,000	\$0
Total Phase II		\$500,000	\$0
Total Heartland Public Shooting Park Capital Purchases		\$8,227,194	\$3,810,000

The capital projects of the Heartland Public Shooting Park will be completed in 2009 with the completion of the RV Park, picnic shelters, and archery venues.

Heartland Public Shooting Park Cash Contributions Received to Date

Virgil Eihusen Foundation, Inc.	\$300,000
Nebraska Game and Parks	\$288,000
Hornady Family	\$262,000
Grand Island Skeet and Sporting Clay Club, Inc.	\$260,000
Edgar and Frances Reynolds Foundation	\$245,000
Kaufmann-Cummings Foundation	\$70,000
Douthit Realty Company	\$50,000
Pheasants Forever	\$15,000
Vern and Esther Taylor Charitable Trust	\$7,500
Earl and Maxine Claussen Charitable Trust	\$6,000
Platte Valley State Bank and Trust Company	\$40,000
National Rifle Association	\$2,000
Total Contributions Received to Date	\$1,545,500

Park cash contributions have primarily been obtained through the Heartland Public Shooting Club for the purchase of various venues. The clubs ability to obtain volunteers and cash contributions to the park is essential.

Shooters

2007	# of Events	Participating	Average Per Event
Special Events	27	3,000	111.11
Leagues	8	450	56.25
Open Shooting		6,000	
Shooters		9,450	

2008	# of Events	Participating	Average Per Event	%Change
Special Events	50	5,000	100	66.67%
Leagues	16	1,000	62.5	122.22%
Open Shooting		10,000		66.67%
Shooters		16,000		

Marketing Plan

The marketing plan for the Heartland Public Shooting Park will account for all potential novice and experienced shooters located locally, state, or nationally through events, advertising, and collaborations with other marketing entities. All venues will be marketed through various tools as stated in the Marketing strategy.

**The marketing strategy can be found on page 18.*

Volunteers

The Heartland Public Shooting Park has had a number of volunteers throughout the years. The Heartland Public Shooting Park had 1 full time equivalent (Park Superintendent) in 2005 and an additional .5 full time equivalent (Seasonal Worker) in 2006. The 412.5 acre park depends on volunteers to operate the facility. Although park management depends on the volunteer hours, the volunteers do not have a routine work schedule. This leaves the job of maintenance for the day to day operations to the park management.

2005 Volunteers		
Volunteer	Number	Hours
Adult	54	3,984
*Special Event	20	1,500
Youth	159	1,908
Total 2005 Volunteers	233	7,392

2006 Volunteers		
Volunteer	Number	Hours
Adult	59	4,404
*Special Events	20	1,500
Total 2006 Volunteers	79	5,904

**Special Events are estimated*

In 2005, area high school youth volunteered to obtain a discounted rate for shooting. In 2006 the youth opted to pay the regular price.

According to the 2005 agreement between the City and Club, volunteers who work (50) hours of service per calendar year shall be provided a discounted rate per round. The discounted rate as approved by Council is \$1.50 per round.

The volunteers of the park have the following mission statement:

Our mission is to support the Heartland Public Shooting Park and it's programs. A place where outdoorsmen come together as a community to have fun and enjoy our sport, but MORE than that it is a "safe" environment where we can bring our families, our children and our guests to enjoy, teach and educate.....to share the wonderful gift of the Heartland Public Shooting Park facility.

**Current jobs available for volunteers can be found on page19.*

Venues/Other Amenities

Park Map



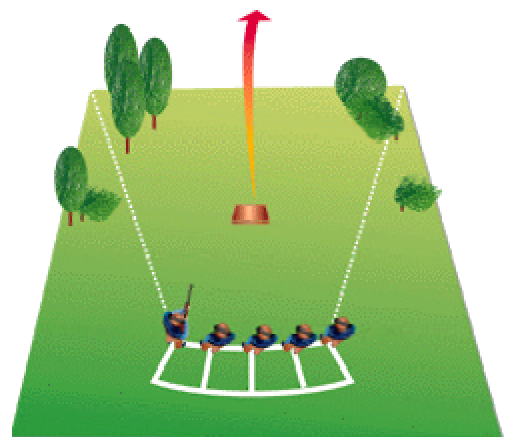
Park Activities

1. Sporting Clays Range
2. Virgil Eihusen Skeet Fields
3. Trap Range
4. Campground/RV Park
5. Activity Center
6. Fishing & Retriever Training Lake
7. Pistol Range
8. Rifle Range
9. 100 Yard Range
10. Cowboy Action
11. Archery
12. Radio Controlled Airplanes
13. Five Stand
14. Paintball

Trap Range

The Heartland Public Shooting Park has four northeast facing trap fields equipped with “PAT” TRAPS. All fields are equipped with ventriloquist operated throwers and each trap can be set as wobble traps. The trap fields are well lit for night shooting and all walkways are concrete and are ADA compliant.

Trap is a clay pigeon shooting sport, one of the International Shooting Sport Federation shooting events. It is a recreational and competitive activity where participants use a shotgun to attempt to break a clay disk flung away from the shooter at high speed.



The layout of modern trap shooting is different from skeet shooting in that there is only one house that releases targets and the shooters only move through 5 different positions. There are two basic forms of trap: International and American.

In International Trap competitions, the course of fire is 125 shots for men and 75 shots for women. There is also a 25 shot final for the top six competitors.

American Trap is popular in the United States. Official events and rules are governed by the Amateur Trap Shooting Association or ATA. American trap is broken down into three categories: 16 yard singles, 16 yard doubles and, handicap which is shot between 19 and 27 yards.

In singles each shooter takes one shot at five targets in each of the five positions in sequence and which is shot while standing 16 yards back from the trap house. The trap rotates back and forth so it is impossible to know which way the target is going to come out.

Handicap is the same as singles but shot from further away. You start at the 20 yard line and work your way back as your average improves over time. Extra yardages may be given if you win a championship or other major event. No two shooters on the same squad should have a difference of more than three yards between them.

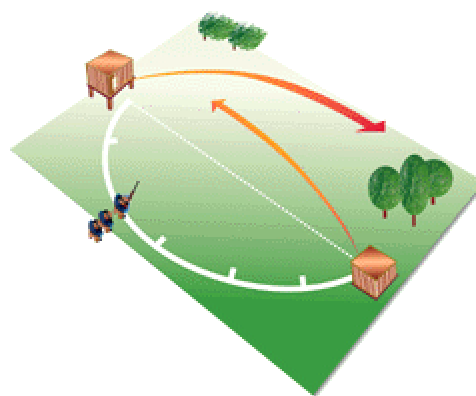
Doubles is shot from 16 yards and the trap is fixed to fire straight away. Two targets are thrown at the same time and you get one shot per target. There is no second shot on any target in American Trap singles or handicap.

International events require a shooter to shoot at 125 targets with a 25 bird run-off in the event of a tie. When shooting American Trap for practice or fun a squad of five will shoot 25 targets each for a total of 125. Registered ATA shoots require shooters to shoot 100 targets per squad and they are allowed to shoot as many squads as they wish during non event shoots. Most of these shoots are for your personal average or handicap yardage. In order to qualify for the Grand a shooter must shoot 2000 singles, 1500 doubles, and 2000 handicap targets.

Skeet Range

There are six skeet fields each equipped with “PAT” TRAPS. These fields are strategically positioned northeast which offers great visibility for shooting anytime of the day. The skeet fields are well lit for night shooting. All walkways are concrete and are ADA compliant.

Skeet is a clay target shooting sport. There are two types of Skeet, American Skeet which is administered by the NSSA (National Skeet Shooting Association) and Olympic Skeet which is also one of the ISSF shooting events.



Skeet is a recreational and competitive activity where participants attempt to break clay disks flung into the air at high speed from a variety of angles.

The shooter shoots from seven positions on a semi-circle and an eight position halfway between stations one and seven. There are two houses that hold throwers that launch the targets, one at each corner of the semi-circle. The throwers launch the targets to a point 15 feet above ground and 18 feet outside of station 8. One house launches targets from 10 feet above the ground ("high" house) and the other launches it from 3 feet above ground ("low" house). At stations 1 and 2 the shooter shoots at single targets launched from the high house and then the low house, then shoots a double where the two targets are launched simultaneously. At stations three through five the shooter shoots at single targets launched from the high house and then the low house. At stations six and seven the shooter shoots at single targets launched from the high house and then the low house then shoots a double. At station eight the shooter shoots one high target and one low target. The shooter must re-shoot his first missed target, or if no targets are missed, must shoot his 25th shell at the low house station eight.

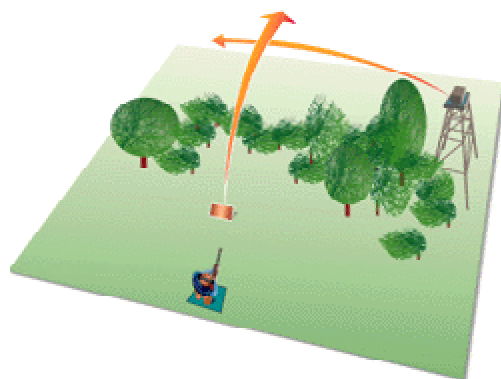
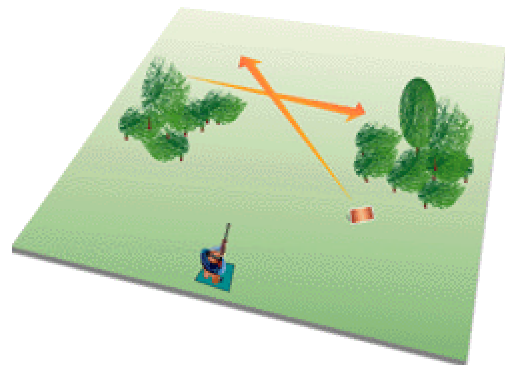
Skeet shooting has been an Olympic event since 1968. Olympic Skeet differs from ordinary skeet in that the targets are shot in a different order, are faster and will appear with a delay of between zero and three seconds after the shooter has called for them. In addition, whereas in American Skeet the shooter may call for the target with the gun held "up" ie. pre-mounted on the shoulder, in Olympic Skeet the shooter must call for the target with the gun held so that the gun butt is at mid-torso level.

Sporting Clays Range

The sporting clays area encompasses 75 acres. This venue was seeded with a special habitat mixture as well as having over 120 trees planted.

The 10 station course is set in a circular design where shooters shoot toward the center of the circle. There is a gravel cart road around the course and fenced entrances to each station. Two of the stations are shot while standing on a raised platform. One of these platforms has a wobble trap. Towers vary in size, including one 40 foot and one 60 foot. Each tower has a platform that holds two traps with the capability to throw overhead targets long distances to challenge the shooter even more.

Each station is supplied with two PRO-MATIC traps so there are two varied targets thrown for each presentation. The traps are repositioned regularly to provide an endless variety of target presentations. Traps are run with automatic counters so you can shoot as many targets as you desire and pay for only the ones shot. The control boxes also allow a shooter to delay the release of the target three seconds after the push of a button, thereby enabling the person to shoot alone.



Pistol/Rifle Range

The 200, 300, and 600 yard center fire ranges contain 24 covered firing points which are fully baffled with 60 foot long shooting tubes. These tubes are engineered to allow for no "blue sky" and will not allow a bullet to escape the grounds. All of these safeguards are in place to keep the shooter safe and eliminate potential stray bullets from leaving the site.

Each of the benches for the 200, 300, and 600 yard ranges are constructed of heavy concrete and steel, making them extremely steady for the long range shooter. The 100 yard range boasts 30 individual rifle benches with adjustable seats that allow for both right and left handed shooters. Currently, we have moveable target stands that may be positioned at any distance on the range. Both rifle and pistol targets are provided. This range is only open when a Range Safety Officer is present.

Cowboy Action

Heartland Public Shooting Park's Cowboy Action venue is home to the Platte Valley Gunslingers. This is Single Action Shooting Society (SASS) affiliated club with members coming from Grand Island and surrounding communities. The Cowboy Action is comprised of 12 individual ranges with three-sided berms. The club also hold's monthly shoots including the annual SASS Nebraska State Blackpowder Shootout "Smoke 'n' Steel."



Plans have been developed and construction has started on the "Cowboy Town." These western facades will cover several of the existing tri-bermed action pistol venues. The Cowboy Action committee started construction on this project in 2007. Chief Industries have donated their professional services in the design and drafting of the individual buildings as outlined by the Cowboy Action committee.

Lake

The 7.5 acre retriever training lake is primarily used for retriever trials. The lake is also open to the public for fishing. Stocked with bluegill and multiple species of pan fish the wildlife habitat can accommodate youth fishing education and training programs.

Activity Center

Centrally located in the park, the entire activity facility is heated and air-conditioned. The upper level contains the customer service counter where all shooters check in. This level also has a 16' x 60' deck which provides ample seating.



The lower level contains a meeting facility room which can accommodate up to 60 people and can be used for various events. This level is fully equipped with audio visual equipment needed to make classroom time a pleasure.

RV Park/Picnic Area

Plans for a 60 full service pad RV Park and picnic shelters have been developed and have tentatively has a completion date in the fall of 2008. A camping area will allow the traveling shooting sportsman the opportunity to join in many of the parks competitive and non-competitive shooting venues, while staying at the Heartland Public Shooting Park.

	2005 Actual	2006 Actual	2007 Projection	*2008 Budgeted	2009 Estimated	*2010 Estimated	*2011 Estimated	*2012 Estimated	*2013 Estimated
Personnel Services									
Salaries - Regular	\$ 9,351.06	\$ 42,077.99	\$ 64,623.00	\$ 122,271.00	\$ 129,607.26	\$ 137,383.70	\$ 145,626.72	\$ 154,364.32	\$ 163,626.18
Other	\$ 3,506.04	\$ 15,287.72	\$ 23,330.00	\$ 49,729.00	\$ 52,712.74	\$ 55,875.50	\$ 59,228.03	\$ 62,781.72	\$ 66,548.62
Total Personnel Services	\$12,857.10	\$ 57,365.71	\$ 87,953.00	\$172,000.00	\$182,320.00	\$193,259.20	\$204,854.75	\$217,146.04	\$230,174.80
Operating Expenses									
Consulting Services	\$ -	\$ 2,101.50	\$ 5,000.00	\$ 6,000.00	\$ 6,360.00	\$ 6,741.60	\$ 7,146.10	\$ 7,574.86	\$ 8,029.35
Shells		\$ 2,713.45	\$ 7,500.00	\$ 8,000.00	\$ 8,480.00	\$ 8,988.80	\$ 9,528.13	\$ 10,099.82	\$ 10,705.80
Targets		\$ 49,626.98	\$ 60,000.00	\$ 65,000.00	\$ 68,900.00	\$ 73,034.00	\$ 77,416.04	\$ 82,061.00	\$ 86,984.66
Event Merchandise-Expenses		\$ 20,118.37	\$ 5,000.00	\$ 5,000.00	\$ 5,300.00	\$ 5,618.00	\$ 5,955.08	\$ 6,312.38	\$ 6,691.13
Miscellaneous Merchandise		\$ 84.00	\$ 1,000.00	\$ 1,500.00	\$ 1,590.00	\$ 1,685.40	\$ 1,786.52	\$ 1,893.72	\$ 2,007.34
Computer Services		\$ 1,500.00	\$ 2,000.00	\$ 2,500.00	\$ 2,650.00	\$ 2,809.00	\$ 2,977.54	\$ 3,156.19	\$ 3,345.56
Printing & Binding Services		\$ 711.13	\$ 2,400.00	\$ 2,500.00	\$ 2,650.00	\$ 2,809.00	\$ 2,977.54	\$ 3,156.19	\$ 3,345.56
Donation Expenditures	\$ 4,679.59	\$ 1,832.76	\$ 84.00	\$ 50,000.00	\$ 53,000.00	\$ 56,180.00	\$ 59,550.80	\$ 63,123.85	\$ 66,911.28
Utility Services		\$ 9,028.07	\$ 10,000.00	\$ 12,000.00	\$ 12,720.00	\$ 13,483.20	\$ 14,292.19	\$ 15,149.72	\$ 16,058.71
Propane		\$ 3,552.65	\$ 6,400.00	\$ 7,000.00	\$ 7,420.00	\$ 7,865.20	\$ 8,337.11	\$ 8,837.34	\$ 9,367.58
Repair & Main-Land Imp/Irri		\$ 399.92	\$ 400.00	\$ 500.00	\$ 530.00	\$ 561.80	\$ 595.51	\$ 631.24	\$ 669.11
Repair & Maint - Building		\$ 1,761.42	\$ 4,000.00	\$ 4,000.00	\$ 4,240.00	\$ 4,494.40	\$ 4,764.06	\$ 5,049.91	\$ 5,352.90
Repair & Maint Machine & Equ		\$ 3,128.15	\$ 5,000.00	\$ 5,000.00	\$ 5,300.00	\$ 5,618.00	\$ 5,955.08	\$ 6,312.38	\$ 6,691.13
Repair & Main - Off Furn		\$ -	\$ 300.00	\$ 500.00	\$ 530.00	\$ 561.80	\$ 595.51	\$ 631.24	\$ 669.11
Repair & Main - Vehicles		\$ 178.67	\$ 60.00	\$ -	\$ -	\$ -	\$ -	\$ -	\$ -
Sanitation Service		\$ 3,451.65	\$ 5,000.00	\$ 5,500.00	\$ 5,830.00	\$ 6,179.80	\$ 6,550.59	\$ 6,943.62	\$ 7,360.24
Street Resurfacing		\$ 479.51	\$ 123.00	\$ 200.00	\$ 212.00	\$ 224.72	\$ 238.20	\$ 252.50	\$ 267.65
Insurance Premiums		\$ 2,100.00	\$ 1,938.00	\$ 2,200.00	\$ 2,332.00	\$ 2,471.92	\$ 2,620.24	\$ 2,777.45	\$ 2,944.10
Telephone Expense	\$ 317.91	\$ 1,935.73	\$ 2,500.00	\$ 2,700.00	\$ 2,862.00	\$ 3,033.72	\$ 3,215.74	\$ 3,408.69	\$ 3,613.21
Advertising		\$ 719.01	\$ 8,800.00	\$ 8,800.00	\$ 9,328.00	\$ 9,887.68	\$ 10,480.94	\$ 11,109.80	\$ 11,776.39
Legal Notices		\$ -	\$ -	\$ -	\$ -	\$ -	\$ -	\$ -	\$ -
Dues & Subscriptions		\$ 143.50	\$ 500.00	\$ 500.00	\$ 530.00	\$ 561.80	\$ 595.51	\$ 631.24	\$ 669.11
License & Fees		\$ 120.00	\$ 200.00	\$ 300.00	\$ 318.00	\$ 337.08	\$ 357.30	\$ 378.74	\$ 401.47
Travel & Training		\$ -	\$ 1,500.00	\$ 2,000.00	\$ 2,120.00	\$ 2,247.20	\$ 2,382.03	\$ 2,524.95	\$ 2,676.45
Cash Over & Short		\$ 211.19	\$ (42.00)	\$ -	\$ -	\$ -	\$ -	\$ -	\$ -
Other Expenditures		\$ 8,482.92	\$ 10,000.00	\$ 12,000.00	\$ 12,720.00	\$ 13,483.20	\$ 14,292.19	\$ 15,149.72	\$ 16,058.71
Office Supplies		\$ 515.88	\$ 1,000.00	\$ 1,000.00	\$ 1,060.00	\$ 1,123.60	\$ 1,191.02	\$ 1,262.48	\$ 1,338.23
Gasoline		\$ 2,237.62	\$ 3,500.00	\$ 4,000.00	\$ 4,240.00	\$ 4,494.40	\$ 4,764.06	\$ 5,049.91	\$ 5,352.90
Diesel Fuel		\$ 313.37	\$ 150.00	\$ 250.00	\$ 265.00	\$ 280.90	\$ 297.75	\$ 315.62	\$ 334.56
Misc Operating Equipment		\$ 19,898.18	\$ 12,000.00	\$ 12,000.00	\$ 12,720.00	\$ 13,483.20	\$ 14,292.19	\$ 15,149.72	\$ 16,058.71
Materials		\$ 332.28	\$ 5,000.00	\$ 5,000.00	\$ 5,300.00	\$ 5,618.00	\$ 5,955.08	\$ 6,312.38	\$ 6,691.13
Other General Supplies		\$ 7,054.03	\$ 12,000.00	\$ 14,000.00	\$ 14,840.00	\$ 15,730.40	\$ 16,674.22	\$ 17,674.68	\$ 18,735.16
Total Operating Expenses	\$ 4,997.50	\$144,731.94	\$173,313.00	\$239,950.00	\$254,347.00	\$269,607.82	\$285,784.29	\$302,931.35	\$321,107.23
Capital Outlay									
Machinery and Equipment	0	\$ -	\$ -	\$ -	\$ -	\$ -	\$ -	\$ -	\$ -
Vehicles	0	23995.54	\$ -	\$ -	\$ -	\$ -	\$ -	\$ -	\$ -
Total Capital Outlay	0	23995.54	\$ -	\$ -	\$ -	\$ -	\$ -	\$ -	\$ -
Total Heartland Public Shooting Park	\$17,854.60	\$226,093.19	\$261,266.00	\$411,950.00	\$436,667.00	\$462,867.02	\$490,639.04	\$520,077.38	\$551,282.03

Revenues	2006 Actual	2007 Projected	2008 Budgeted	2009 Budgeted	2010 Budgeted	2011 Budgeted	2012 Budgeted	2013 Budgeted
Other Fees and Services	\$ 0	\$ 1,174.80	\$ -	\$ -	\$ -	\$ -	\$ -	\$ -
Special Events Revenue	\$ 69,014.69	\$ 38,018.34	\$ 80,000.00	\$ 96,000.00	\$ 113,280.00	\$ 131,404.80	\$ 149,801.47	\$ 168,526.66
Sporting Clay Revenue	\$ 20,100.01	\$ 13,281.82	\$ 25,000.00	\$ 30,000.00	\$ 35,400.00	\$ 41,064.00	\$ 46,812.96	\$ 52,664.58
Sporting Clay Reve - Punch Car	\$ 3,728.25	\$ 1,257.00	\$ 6,000.00	\$ 7,200.00	\$ 8,496.00	\$ 9,855.36	\$ 11,235.11	\$ 12,639.50
Sorting Clay Revenue-Youth	\$ 1,622.03	\$ 2,408.65	\$ 2,000.00	\$ 2,400.00	\$ 2,832.00	\$ 3,285.12	\$ 3,745.04	\$ 4,213.17
Sporting Clay League	\$ 985.79	\$ 4,537.90	\$ 3,000.00	\$ 3,600.00	\$ 4,248.00	\$ 4,927.68	\$ 5,617.56	\$ 6,319.75
Trap Revenue	\$ 11,554.91	\$ 10,048.25	\$ 14,000.00	\$ 16,800.00	\$ 19,824.00	\$ 22,995.84	\$ 26,215.26	\$ 29,492.16
Trap Revenue - Punch Cards	\$ 1,928.88	\$ 605.06	\$ 3,000.00	\$ 3,600.00	\$ 4,248.00	\$ 4,927.68	\$ 5,617.56	\$ 6,319.75
Trap Revenue - Youth	\$ 9,544.73	\$ 6,602.10	\$ 7,000.00	\$ 8,400.00	\$ 9,912.00	\$ 11,497.92	\$ 13,107.63	\$ 14,746.08
Trap League	\$ 1,251.18	\$ 113.75	\$ 2,000.00	\$ 2,400.00	\$ 2,832.00	\$ 3,285.12	\$ 3,745.04	\$ 4,213.17
Skeet Revenue	\$ 11,581.59	\$ 11,513.04	\$ 11,000.00	\$ 13,200.00	\$ 15,576.00	\$ 18,068.16	\$ 20,597.70	\$ 23,172.42
Skeet Revenue - Punch Cards	\$ 4,978.11	\$ 5,928.25	\$ 6,000.00	\$ 7,200.00	\$ 8,496.00	\$ 9,855.36	\$ 11,235.11	\$ 12,639.50
Skeet Revenue - Youth	\$ 1,520.17	\$ 428.77	\$ 2,000.00	\$ 2,400.00	\$ 2,832.00	\$ 3,285.12	\$ 3,745.04	\$ 4,213.17
Skeet League	\$ 767.77	\$ 447.00	\$ 1,500.00	\$ 1,800.00	\$ 2,124.00	\$ 2,463.84	\$ 2,808.78	\$ 3,159.87
5 Stand Revenue	\$ -	\$ 3,268.15	\$ 5,000.00	\$ 6,000.00	\$ 7,080.00	\$ 8,212.80	\$ 9,362.59	\$ 10,532.92
5 Stand Revenue-Youth	\$ -	\$ 407.53	\$ 1,000.00	\$ 1,200.00	\$ 1,416.00	\$ 1,642.56	\$ 1,872.52	\$ 2,106.58
Shotgun Shell Revenue	\$ 3,220.45	\$ 3,593.15	\$ 4,500.00	\$ 5,400.00	\$ 6,372.00	\$ 7,391.52	\$ 8,426.33	\$ 9,479.62
Misc Revenue Shotgun	\$ -	\$ -	\$ 5,000.00	\$ 6,000.00	\$ 7,080.00	\$ 8,212.80	\$ 9,362.59	\$ 10,532.92
Misc Revenue - Handgun	\$ -	\$ 81.89	\$ -	\$ -	\$ -	\$ -	\$ -	\$ -
Mis Revenue - Pistol/Rifle	\$ -	\$ -	\$ 25,000.00	\$ 30,000.00	\$ 35,400.00	\$ 41,064.00	\$ 46,812.96	\$ 52,664.58
Misc Revenue - Pistol	\$ -	\$ 1,480.96	\$ -	\$ -	\$ -	\$ -	\$ -	\$ -
Misc Merchandise Sales	\$ 400.38	\$ 3,204.52	\$ 2,500.00	\$ 3,000.00	\$ 3,540.00	\$ 4,106.40	\$ 4,681.30	\$ 5,266.46
Equipment Rental	\$ -	\$ 1,297.80	\$ 1,000.00	\$ 1,200.00	\$ 1,416.00	\$ 1,642.56	\$ 1,872.52	\$ 2,106.58
Cart Rental Fee	\$ 674.90	\$ -	\$ -	\$ -	\$ -	\$ -	\$ -	\$ -
Other Rental	\$ 5,130.00	\$ 4,680.00	\$ 2,000.00	\$ 2,400.00	\$ 2,832.00	\$ 3,285.12	\$ 3,745.04	\$ 4,213.17
Donations & Contributions	\$ 2,129.05	\$ 421.20	\$ 50,000.00	\$ 60,000.00	\$ 70,800.00	\$ 82,128.00	\$ 93,625.92	\$ 105,329.16
Co-Pay Health Insurance	\$ 1,108.52	\$ 1,793.76	\$ 3,812.00	\$ 4,574.40	\$ 5,397.79	\$ 6,261.44	\$ 7,138.04	\$ 8,030.30
Other Revenue	\$ 13,735.00	\$ 8,611.08	\$ 15,000.00	\$ 18,000.00	\$ 21,240.00	\$ 24,638.40	\$ 28,087.78	\$ 31,598.75
Total Revenues	\$ 164,976.41	\$ 125,204.76	\$ 277,312.00	\$ 332,774.40	\$ 392,673.79	\$ 455,501.60	\$ 519,271.82	\$ 584,180.80

TRAP	
TRAP FIGURES ARE BASED ON THROWING 750,000 TARGETS PER YEAR 2005	
Cost Break-Down Per 100 Targets	Discription
\$1.50	NTA State Fees Per 100 Targets
\$1.00	ATA National Day Fee
\$1.75	Event Labor Per 100 Targets (Score/Fill)
\$5.40	Clay Target Per 100 (Includes 8 Targets Breakage Per 100)
\$0.08	Pat-Trap Machine (15 Year Schedule - \$8,500 Capital Investment)
\$0.02	Trap House & Concrete (30 Year Schedule - \$5,000 Capital Investment)
\$0.03	Lights & Electrical (30 Year Schedule - \$7,000 Capital Investment)
\$0.09	Volunteer Labor Factor (1/3 - 3120 Hrs Per Year @ \$7.00 Per Hour = \$7,200)
\$2.22	Range Manager (1/3 - Salary Per Discipline Per Year \$16666.67)
\$12.09	Total cost Per 100 Registered ATA Targets
\$3.02	Total Cost Per 25 Registered ATA Targets
\$0.12	Total Cost Per Registered Target
\$1.75	Event Labor Per 100 Targets (Score/Fill)
\$5.40	Clay Target Per 100 (Includes 8 Targets Breakage Per 100)
\$0.08	Pat-Trap Machine (15 Year Schedule - \$8,500 Capital Investment)
\$0.02	Trap House & Concrete (30 Year Schedule - \$5,000 Capital Investment)
\$0.03	Lights & Electrical (30 Year Schedule - \$7,500 Capital Investment)
\$0.09	Volunteer Labor Factor (1/3 - 3120 Hrs Per Year @ \$7.00 Per Hour = \$7,200)
\$2.22	Range Manager (1/3 - Salary Per Discipline Per Year \$16,666.67)
\$9.59	Total cost Per 100 Public Targets
\$2.40	Total Cost Per 25 Public Targets
\$0.10	Total Cost Per Public Target

SKEET	
SKEET FIGURES ARE BASED ON THROWING 250,000 TARGETS PER YEAR	
Cost Break-Down Per 100 Targets	Discription
\$1.00	State Fees Per 100 Targets
\$3.00	National Day Fee
\$2.45	Event Labor Per 100 Targets (Score/Fill)
\$5.40	Clay Targets Per 100 (Includes 8 Targets Breakage Per 100)
\$0.19	2 Pat-Trap Machines (15 Year Schedule - \$7,000 Capital Investment)
\$0.07	Skeet House (30 Year Schedule - \$5,000 Capital Investment)
\$0.03	Concrete (30 Year Schedule - \$2,500 Capital Investment)
\$0.10	Lights & Electrical (30 Year Schedule - \$7,500 Capital Investment)
\$2.88	Volunteer Labor Factor (1/3 - 3120 Hrs Per Year @ \$7.00 Per Hour = \$7,200)
\$6.67	Range Manager (1/3 Salary Per Discipline Per Year \$16,666.67)
\$21.79	Total Cost Per 100 Registered Skeet Targets
\$5.45	Total Cost Per 25 Registered Skeet Targets
\$0.22	Total Cost Per Registered Skeet Target
\$2.45	Event Labor Per 100 Targets (Score/Fill)
\$5.40	Clay Target Per 100 (Includes 8 Targets Breakage Per 100)
\$0.19	2 Pat-Trap Machines (15 Year Schedual - \$7,000 Capital Investment)
\$0.07	Skeet Houses (30 Year Schedule - \$5,000 Capital Investment)
\$0.03	Concrete (30 Year Schedule - \$2,500 Capital Investment)
\$0.10	lights & Electrical (30 Year Schedule - \$7,500 Capital Investment)
\$2.88	Volunteer Labor Factor (1/3 - 3120 Hrs Per Year @ \$7.00 Per Hour = \$7,200)
\$6.67	Range Manager (1/3 Salary Per Discipline Per Yer \$16,666.67)
\$17.79	Total Cost Per 100 Public Skeet Targets
\$4.45	Total Cost Per 25 Skeet Targets
\$0.18	Total Cost Per Public Skeet Target

In Kind Donations

Kalkowski Construction, Inc. of Grand Island
Sherwin-Williams Company of Grand Island
Luth Construction of Grand Island
Chief Construction of Grand Island
G & T Construction of Grand Island
Dr. John Allen of Marquette
Timothy Jones, DDS of Aurora
Michael Jones DDS of Aurora
Darwin Knecht of Wood River
Hooker Brothers Construction of Grand Island
Middleton Electric of Grand Island
David Zlomke of Grand Island
braska Truck Center of Grand Island, Hastings, and North Pla
Baasch Welding, Inc. of Cairo
O'Connor & Associates, Inc. of Grand Island
Dr. M.D. Mathews of St. Paul
Doglas Krueger of Lincoln
Dr. Terence Foote of Hastings
Harders Land Leveling of Cairo
Abacus Business Systems of Grand Island
Pheasants Forever of Nebraska
MRL Crane Service & Equipment Rental of Grand Island
Carlson Systems, LLC of Grand Island
Larry Badura of Grand Island
Associated Staffing, Inc. of Grand Island
Toner's Inc. of Grand Island

Marketing Strategy

All Venues

- Evaluate working “shows” at the local, state, and national level to provide exposure for the Heartland Public Shooting Park

Rifle and Pistol

- Local Efforts – 4-H BB gun and .22 rifle, GI Rifle and Pistol Cowboy Action Shooters, Kids rifle leagues, Women’s handgun classes
- State – Evaluate hosting the shooting venues of the Cornhusker Games, Evaluate starting a Nebraska Hunter Education Challenge
- Regional – Identify national level “traveling” events where the Heartland Public Shooting Park could be marketed
- National – Identify national level “traveling events where the Heartland Public Shooting Park could be marketed

Shotgun

- Skeet, Trap, Sporting Clays, Beginners League, Women’s League

Identify area users

- Committed shooters, casual shooters, non shooters, volunteers, youth, dog trainers, dog trailers, campers

Corporate Events

- Husker Harvest Days, corporate leagues (off days or hours), customer appreciation, employee recognition, fund raising/charities
- Pheasants Forever – Leagues, sponsor shoots, state sporting clays shoot, youth mentor hunt
- Ducks Unlimited – Sponsor shoots, fund raising shoots, Greenwing (youth) Day
- National Turkey federation/Jakes Day

Hunter Education Classes

Other

- ✓ Produce a brochure, power point presentation, and webpage that promotes the Heartland Public Shooting Park
- ✓ Develop a product line with Heartland Public Shooting Park logos, web site name, etc. to sell at the activity center.
- ✓ Work with the Grand Island Convention and Visitor’s Bureau to identify groups of interest that will be visiting Grand Island
- ✓ Consider having groups use the meeting room facilities to promote the Park
- ✓ Consider hosting the Nebraska Outdoor Education Meeting
- ✓ Promote the park as a field trip destination for schools. The lake and the natural habitats can provide learning opportunities for outdoor education.
- ✓ Develop multi-channel communications with area users via
 - Electronic mail
 - Utility Inserts
 - Brochure placement at area attractions displays

Volunteer Work Available

HPSP LIST OF JOBS 7/19/07

Sporting clays range:

- Remove all posts and wire from transplanted trees
- Clean up and organize posts & wire stored between equipment sheds
- Mow around all transplanted trees and bushes
- Tighten bolts on all signs and sign posts. Repair any signs. Sporting Clays sign, across from Skeet Range is bent. Straighten Pheasants Forever sign
- Straighten (move) patterning board
- Straighten the Sporting Clays rules sign and replace the broken post
- Create an aluminum round sign, with logo to put on each station with phone number of Activity Center and/or Bill Starkey
- Mow and then spray weeds on all stations, paths, roads, around shelter (under porch), parking lot and shotgun pattern board range
- Fill potholes on paths
- Mow field south of clays shelter
- Cut down dead trees near clays shelter
- Paint steps and door trim on clays shelter
- Small weed sprayer to spray weeds in gravel and sidewalks
- Remove old Caution Tape from areas that will not be used...fences, trees, etc
- Haul wood chips to all Stations and paths
- Create Holders for menu cards & a system of laminated cards for SC Stations
- Station one and Station Two benches need refinished or rebuilt
- Station Two Rabbit Trap needs to be repaired – no tires
- Remove flag pole from platform at Station Two
- Repair gun rack at Station Three
- Incomer Station by out house – repair trap – between Stations Four and Five
- Station Five - table and the Ear & Eye sign needs to be repaired
- Station Seven – fill hole
- Sign between Stations Six and Seven needs to be reset straight
- Station Nine – fix fence rail and fill badger holes
- Station Ten – remove old shooting cage
- Pick up hoops from the Small Bore Shoot
- Clean area all around 60' tower and change out battery holders on the towers

Activity Center:

- Remove old sod by Activity Center and trim weeds
- Put the swing back up in the picnic shelter
- Take the scoreboard in the class room and install it on the wall outside
- Fix the ceiling tiles in the basement
- Organize the Kitchen area and clean

Back Access Road:

- Mow the back access road then spray
- Spray the thistles in the Fall

Main parking lot:

- Spray weeds in rock beds along trap & skeet
- Sand and paint the parking lot light poles silver

Target Shed area:

- Move tree spade to between sheds
- Remove weeds around target shed and along trees; spray as necessary

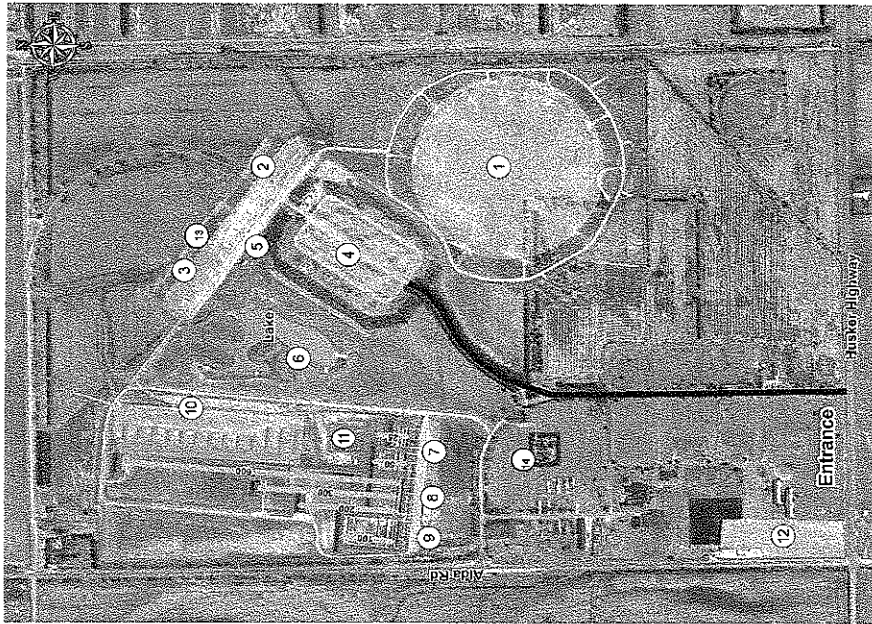
Trap:

- Weed eater areas around all trap and Skeet houses
- Move the dirt and fill in around Trap houses on Ranges 5-6-7-8
- Rip rap the culverts on all the property

Rifle Range:

- Spray weeds on brumes then hydro seed
- Fix outhouse door
- Spray wasps
- Create fences for the Land Bridges
- Get range closed/open signs & chains
- Re-work drainage ditches on the Rifle range
- Something needs to be done with the culvert tubes by the lake
- Corners of drive way need rip rap.
- Arrange to get 20 yards of crushed concrete to use everywhere on site
- Figure out a management program for the target stands
- Need Range Closed signs for each rifle and pistol venue
- Baffle on the 50 yard range needs to be repaired
- Need to install gutters on the Range roofs (over rifle firing line)
- Clean weeds and stuff from around the work sheds
- Need to get eight trash cans and tie them down
- Need to trim the ranges. Need to trim so that it is possible to see thru the tubes
- Repair target frames and set up a place to store them out of sight

PARK MAP



Park Activities

1. Sporting Clays Range
2. Virgil Ethusen Skeet Fields
3. Trap Range
4. Campground/RV Park
5. Activity Center
6. Fishing & Retriever Training Lake
7. Pistol Range
8. Rifle Range
9. 100 Yard Range
10. Cowboy Action
11. Archery
12. Radio Controlled Airplanes
13. Five Stand
14. Paintball

www.heartlandpublicshootingpark.com

PARK HOURS

Park Hours

Sunday	Noon - 5:00 p.m.
Monday	Closed
Tuesday	Closed
Wednesday	5:00 - 10:00 p.m.
Thursday	5:00 - 10:00 p.m.
Friday	Closed
Saturday	9:00 a.m. - 5:00 p.m.

Rifle Range Hours

Saturday	Noon - 4:30 p.m.
Sunday	Noon - 4:30 p.m.

League shooting, registered shooting, special events and corporate events are conducted outside of these regularly scheduled hours of operation.

**Please refer to our website for the most current park hours and possible cancellations.*

The Heartland Public Shooting Park has something for everyone. It is a great place to hold your next sporting shoot or fundraising event, participate in an instructional course, or join a league. Whatever your skill level or time commitment the Heartland Public Shooting Park has something for you.

Heartland Public Shooting Park

*Located 2 miles west of Highway 30
On Husker Highway*

Park Superintendent
6788 W Husker Highway
Grand Island, NE 68801
Telephone: (308) 390-1900
(308) 385-5444 Ext. 290
Email: hpsp@grand-island.com

www.heartlandpublicshootingpark.com

Heartland Public Shooting Park

"COME SHOOT THE PARK!"

PISTOL & RIFLE RANGES + COWBOY ACTION



ACTIVITY CENTER & RV PARK

SKREET, TRAP & SPORTING CLAYS RANGES

Grand Island,
Nebraska



Call Today: 1-308-390-1900
www.heartlandpublicshootingpark.com



SPORTING CLAY RANGE

The Heartland Public Shooting Park has a 75 acre circular sporting clay course with 15 stations. The design of the course allows shooters to shoot toward the center.

A gravel cart road encompasses the course. For safety purposes there are fenced entrances at each station. Station presentations include:

- Two raised platforms
- Wobble trap for varied presentations
- 40- 60 foot towers

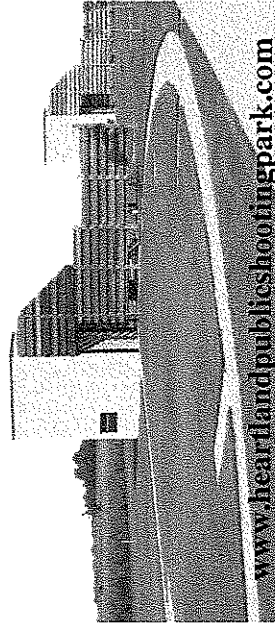
Each station is supplied with two PROMATIC traps to allow for varied targets thrown for each presentation. The traps activate with automatic counters and control boxes to allow the shooter to delay the release of the target.

TRAP RANGE

The Heartland Public Shooting Park has eight trap fields, four of which are overlaid skeet fields. All fields are equipped with "PAT" TRAPS and ventriloquist operated throwers. For a fun twist, each trap can be operated as a wobble trap.

SKEET RANGE

The Virgil Eihusen skeet range consists of six fields also equipped with "PAT" TRAPS all facing northeast. Skeet and trap ranges are lighted at night for continued fun, during evening and winter hours.



www.heartlandpublicshootingpark.com



RIFLE & PISTOL RANGE

The Heartland Public Shooting Park has six ranges available for rifle and pistol shooters. These ranges include:

- 25, 50, 100, 200, 300, and 600 yard
- Center fire ranges are fully baffled & protected by 60 foot long shooting tubes

Safeguards are in place to keep the facility safe as well as eliminate any stray bullets from leaving the site.

****A Range Safety Officer is on duty during open hours****

FISHING/RETRIEVER TRAINING LAKE

The Trials lake is used for retriever trials and Kids Derby Fishing Tournaments. The lake is stocked with multiple pan fish which include bluegill and bass.

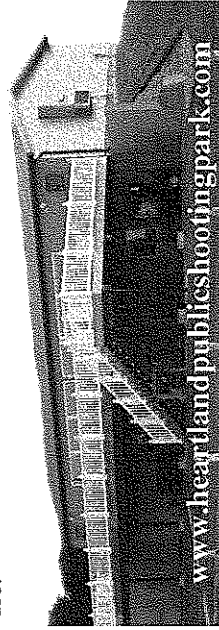
RV PARK

The first phase of the RV Park will be completed in the Fall of 2007. This section of the park when completed, will contain 60 pads with 50 amp service provided.

ACTIVITY CENTER

Centrally located in the park, the entire facility is heated and air-conditioned. The upper level contains the customer service counter where all shooters check in. This level also has a spacious 16' x 60' deck which provides plenty of seating. From this vantage point there is a magnificent view of the trap and skeet ranges.

The lower level contains a meeting facility which can accommodate up to 60 people and can be used for various events. This level is fully equipped with audio visual equipment needed to make classroom time a pleasure.



www.heartlandpublicshootingpark.com



COWBOY ACTION

The Heartland Public Shooting Park Cowboy Action is home to the Platte Valley Gunslingers which is a SASS Affiliated Club. The town is comprised of 12 ranges and each has a three sided berm for safety.

The town is currently under construction.



OTHER

The Heartland Public Shooting Park offers a multitude of opportunities for the novice to advanced shooters.

The Park has guns, shooting equipment and ammunition available:

- Ammunition - 12, 20, 28 & 410 gauge shotgun shells
- Eye & ear protection
- Various firearms available for rent
- Youth loaner guns available
- Shooting cars available for easy access to the park
- Archery Range, Paint Ball Course
- Community Attractions


PARK FEES

The Heartland Public Shooting Park is open to the public and charges the following fees for activities:


Discipline	Adult	Youth	Targets
Trap	\$5.00	\$3.50	25
5 Stand Sporting	\$6.00	\$4.00	25
Skeet	\$5.00	\$3.50	25
Sporting Clays	\$15.00	\$10.00	50
Rifle & Handgun Range	\$5.00	\$2.50	

****Fees subject to change, please check our website for the most current fee schedule***


Heartland Public Shooting Park – Sporting Clay Range



Grand Island, Nebraska




Each station is supplied with two PRO-MATIC traps so there are two varied targets thrown for each presentation. Traps are repositioned regularly to provide an endless variety of target presentations. Traps are run with automatic counters so you can shoot as many targets as you desire and pay for only the ones shot. The control boxes also allow a shooter to delay the release of the target three seconds after the push of a button.



www.heartlandpublicshootingpark.com


Heartland Public Shooting Park – Trap & Skeet Range



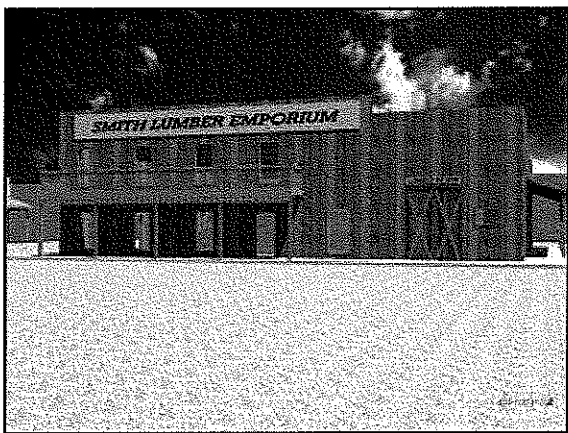
Grand Island, Nebraska

Cowboy Town


- Home to Platte Valley Gunslingers
- SASS Affiliated Club
- 12 Ranges with 3 Sided Berms
- Construction of Cowboy Town to start in summer 2007
- Mailing List available



www.heartlandpublicshootingpark.com




Heartland Public Shooting Park – Trap & Skeet Range



Grand Island, Nebraska


RV Park

- Completion in Fall 2008
- 60 full service pads
- 50 amp service



www.heartlandpublicshootingpark.com



Heartland Public Shooting Park – Activity Center



Grand Island, Nebraska

Activity Center


The entire facility is heated/air-conditioned

- The upper level also has a spacious 16 x 60 deck and plenty of seating
- From this vantage point you have a magnificent view of the trap and skeet ranges

www.heartlandpublicshootingpark.com



Heartland Public Shooting Park – Activity Center



Grand Island, Nebraska

Activity Center

- The center section of the upper level is where the customer counter is located
- All park fees are also collected from this counter

- The meeting facility in the lower level of the Activity Center can accommodate up to 60 people
- The facility offers a comfortable setting with a 16 x 60 walk out patio and all the audio visual equipment needed to make classroom time a pleasure

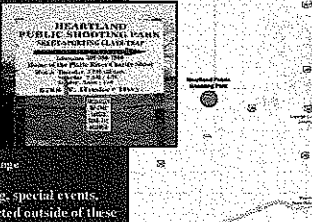
www.heartlandpublicshootingpark.com

Heartland Public Shooting Park

Grand Island, Nebraska

Shooting Range Hours

Closed	Monday
Closed	Tuesday
7:00 p.m. - 10:00 p.m.	Wednesday
5:00 p.m. - 10:00 p.m.	Thursday
Closed	Friday
9:00 a.m. - 5:00 p.m.	Saturday
Noon - 5:00 p.m.	Sunday
Noon - 3:30 p.m.	Sat - Sun Rifle Range



League shooting, registered shooting, special events, and corporate events may be conducted outside of these regularly scheduled hours of operation.

Location
Heartland Public Shooting Park is located 3 miles west of Grand Island
6788 West Husker Highway
www.heartlandpublicshootingpark.com

Heartland Public Shooting Park


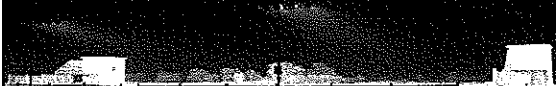
Grand Island, Nebraska

Fees

Discipline	Adult	Youth	Targets
Trap	\$5.00	\$3.50	25
5 Stand Sporting	\$6.00	\$4.00	25
Skeet	\$5.00	\$3.50	25
Sporting Clays	\$15.00	\$10.00	50

Current fees for Shotgun Disciplines per round. To qualify for youth pricing you must be under 19 years old.

Targets

www.heartlandpublicshootingpark.com

Heartland Public Shooting Park

Grand Island, Nebraska

Shooting Range Board


President-Kent Coen	Director-Miles Doyle
Vice President-Tim O'Connor	Director Doyle Hulme
Sporting Clays-Chairman Tim Taber	Director Emil Schaaf
Skeet Chairman-John Haynes	Director Tim Ziegler
Trap Chairman-Jim Janda	Director Dr. John Allen
Secretary-Leta McCashin	Director Larry Balura
Treasurer-John Hoggatt	Director Dave Zlonke

Volunteers


This Facility is operated by the City of Grand Island Nebraska with the generous assistance of a group of people dedicated to the success of this park. They dedicate their time and labor to make this place what it is today. We owe them a great debt of gratitude.

www.heartlandpublicshootingpark.com

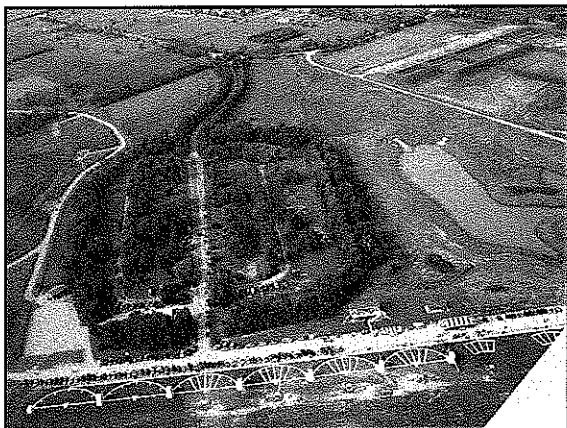
A Guide Through the Heartland Public Shooting Park

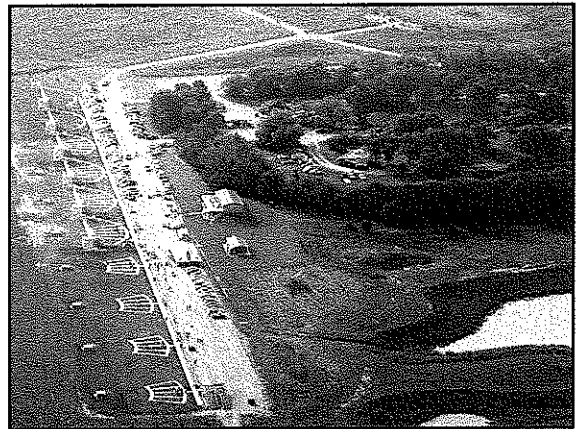
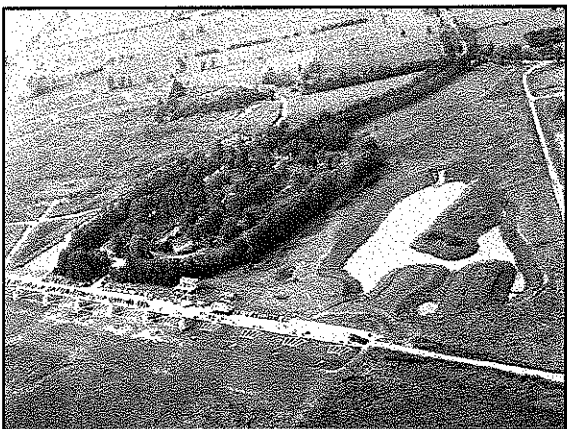
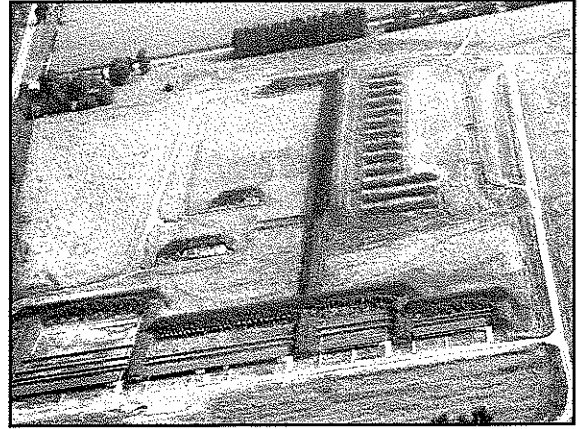
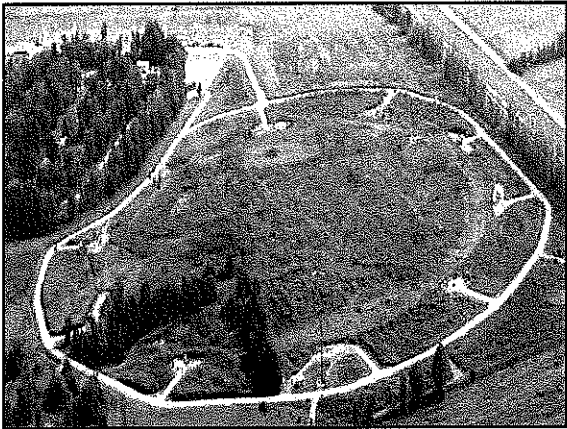
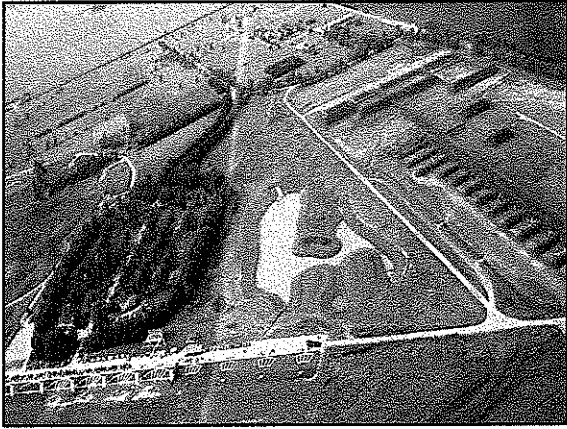


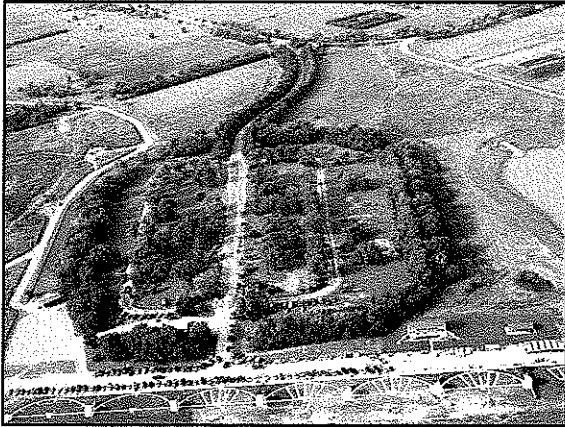
Grand Island, Nebraska



Fly Over







Heartland Public Shooting Park
Grand Island, Nebraska

Bill Starkey
Heartland Public Shooting
Park Superintendent
(308) 390-1900
bstarkey@grand-island.com

www.heartlandpublicshootingpark.com



Welcome Shooters

Home of the Platte River Charity Shoot and the Centura and Viking Trap Teams

Wednesday, August 01, 2007 10:11



Heartland Public Shooting Park

Grand Island, Nebraska



6788 W/ Husker Highway
Grand Island, Nebraska 68801
308-390-1900
Latitude 40 53.224
Longitude 98 28.196

Home

Welcome

Activity Center

Board

Directions

Hours and Fees

Hunter Education

Site Plan (pdf)

Safety

Shooting Clubs

Shooting Instruction

Volunteer Opportunities

Disciplines

Shotgun

Rifle/Pistol

Cowboy Action

Leagues

Registration (pdf)

Schedule

Buffet League Schedule

HPSP Brochure

Contact Us

Shoot Results

Park Calendar

Lake

RV Park

Archive

Photo Gallery

Links

The Heartland Public Shooting Range Offers:

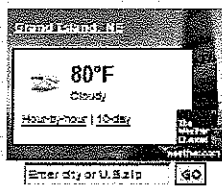
- Skeet Range
- Sporting Clays Range
- Trap Range
- Activity Center
- Registered Targets
- Instruction/Shooting Clinics
- Ammunition - 12, 20, 28 and 410 gauge Shotgun Shells
- Eye and Ear Protection
- Beretta Shotguns Available for use
- Youth, Lady, and Regular 12 and 20 gauge loaner shotguns
- Model Airplane Flying Club
- Shooting carts available for easy access to our shooting complex.

Spring 2007 Attractions:

- Sanctioned Retriever Trials
- Rifle and Pistol Ranges from 25 to 600 yards
- Cowboy Action

Future Attractions:

- 60 Site Modern Campground
- 25 miles of equestrian and pedestrian trails



Welcome

This Facility is operated by the City of Grand Island Nebraska with the generous assistance of a group of people dedicated to the success of this park. They dedicate their time and labor to make this place what it is today. We owe them a great debt of gratitude. Please contact us about joining this group.

News Ticker

Place cursor over text to stop and/or select link.

gun Falling Plate Shoot

August 11th

September 8th

October 13th

andgunner's Welcome

7 Youth Celebration Minutes

Our facility is available for the following shooting sport related events:

- Private Shoots
- Fundraising Events
- Customer Appreciation
- Employee Recognition

by Appointment Only.



Heartland Public Shooting Park - The Official Web site of the Heartland Public Shooting Park
Contact Us: Send Email or Call (308) 390-1900
Copyright © 2006 City of Grand Island. All Rights Reserved
P.O. Box 1968, Grand Island, NE 68802



Select the "City of Grand Island" logo to direct you to the city website.

AGREEMENT

On the terms and subject to the conditions of this Agreement, the GRAND ISLAND SKEET & SPORTING CLAYS CLUB, INC. of Grand Island, Nebraska, shall have permission to use facilities to be constructed on city property for skeet, trap and sporting clay range facilities, said facilities to be owned by the City of Grand Island, Nebraska.

It is agreed by and between the parties, that the City of Grand Island, shall contribute funding for the construction and development of the facilities and that the Grand Island Skeet & Sporting Clays Club, Inc. shall also contribute funding to assist in the construction of the facilities. The Grand Island Skeet & Sporting Clays Club, Inc., shall contribute over \$200,000.00 toward the development of the facilities. The City of Grand Island, to assist the Grand Island Skeet & Sporting Clays Club, Inc. in obtaining funding from various sources, including funding from local foundations, shall loan to the Grand Island Skeet & Sporting Clays Club, Inc. the amount of \$100,000.00, which shall be repayable to the City of Grand Island over a period of five years. Said loan shall not bear interest.

The Grand Island Skeet & Sporting Clays Club, Inc., in receipt of the loan funds from the City of Grand Island shall use all of the funds for the improvement of the facilities, and all improvements made by the Grand Island Skeet & Sporting Clays Club, Inc., once completed, shall belong to and become the property of the City of Grand Island.

All funds received by the Grand Island Skeet & Sporting Clays Club, Inc. from the City of Grand Island shall be expended within the first twelve months after receipt or any unexpended funds shall be returned to the City of Grand Island, constituting a repayment towards the \$100,000.00.

Itemized receipts and accountings shall be made between the Grand Island Skeet & Sporting Clays Club, Inc., and the Parks & Recreation Director and the Finance Director of the City of Grand Island to coordinate that the funds are being properly spent for the development of the skeet, trap and sporting clay range facilities.

In consideration of the Grand Island Skeet & Sporting Clays Club, Inc. making said expenditures and obligating itself to repay the \$100,000.00 to the City of Grand Island, it is further anticipated that the City of Grand Island shall expend funds of at least \$100,000.00 over the next five years towards development of said facilities.

The Grand Island Skeet & Sporting Clays Club, Inc. shall make no claim of ownership to any of the facilities located on city property.

The Grand Island Skeet & Sporting Clays Club, Inc. agrees to repay the \$100,000.00 and reimburse to the city for its right to use the facilities, the amount of \$25,000.00, which is due and payable on the last day of the second year after the execution of this agreement, \$25,000.00 due and payable on the last day of the third year after the execution of this agreement, \$25,000.00 due and payable on the last day of the end of the fourth year after the execution of the agreement,

and \$25,000.00 due and payable on the last day of the fifth year after the execution of the agreement.

Any loss or damage to the facilities during the construction of the facilities, which is being paid for and supervised by the Grand Island Skeet & Sporting Clays Club, Inc., shall be at the sole risk of the Grand Island Skeet & Sporting Clays Club, Inc..

The Grand Island Skeet & Sporting Clays Club, Inc., during the period of time covered by this agreement, shall provide to the City of Grand Island proof of having insurance in place which insures the facilities against fire, theft, damage or destruction and against such other risks in such amounts as the city may reasonably require. The Grand Island Skeet & Sporting Clays Club, Inc. shall also have in force at all times a public liability insurance policy which shall be paid for out of its funds at its own cost and expense, giving protection to the extent of a minimum of \$1,000,000.00 in the event of death or injury to any one individual, and \$1,000,000.00 in the event of injury or death to more than one individual, if such death or injury arises in connection with the program or event or use of the facilities by the Grand Island Skeet & Sporting Clays Club, Inc.. Any such insurance shall include as an additional insured the City of Grand Island. Such insurance shall be placed with an insurance company approved by the City of Grand Island and shall provide that the insurance company will give the City of Grand Island thirty (30) days written notice before the policy may be altered or canceled. The Grand Island Skeet & Sporting Clays Club, Inc. shall deliver a proof of insurance policy or certificate of insurance to the City of Grand Island prior to commencing any work or construction at the facility. The Grand Island Skeet & Sporting Clays Club, Inc. shall indemnify, defend and hold the City of Grand Island harmless from and against any and all loss, damage, cost or expense to the facilities or for any other liability not compensated for by insurance.

This agreement or any rights hereunder may not be assigned or otherwise transferred by the Grand Island Skeet & Sporting Clays Club, Inc. and shall not inure to the benefit of any other party without prior written consent of the City of Grand Island.

This agreement shall be governed by and construed in accordance with the laws of the State of Nebraska.

At any time, after the execution of this agreement, if the Grand Island Skeet & Sporting Clays Club, Inc. shall no longer make use of the facilities nor wish to continue in cooperation of the development of the facilities with the City of Grand Island, any unpaid amount of the initial \$100,000.00, shall become due and payable in full at that time. Said amount that shall be due and payable, is to become due without further written notice or demand to be made by the City of Grand Island to the Grand Island Skeet & Sporting Clays Club, Inc.. The Grand Island Skeet & Sporting Clays Club, Inc. hereby waives its right to any notice or demand for repayment of any proceeds provided by the City of Grand Island.

All work that is to be paid for with funds provided by the City of Grand Island, shall not commence, without notice and approval provided by the Parks & Recreation Director of the City of Grand Island. The Grand Island Skeet & Sporting Clays Club, Inc., shall pay for and be

required to obtain all necessary permits and approvals necessary for the construction of any improvements made by it.

No delay by the City of Grand Island in exercising any of its rights or powers arising from any default by the Grand Island Skeet & Sporting Clays Club, Inc. shall impair the right or power or prevent its exercise during the continuance of the default. No waiver by the City of Grand Island of any default, whether full or partial, shall extend to any subsequent default, except as may otherwise be provided in this agreement. No remedy is intended to be exclusive of any other remedy, but each shall be cumulative in addition to any other remedy given or otherwise existing nor shall the giving, taking or enforcement of any other additional security, collateral or guarantee for the payment of the indebtedness operate to waive or affect any rights, powers or remedies under this agreement; nor shall the City of Grand Island be required to first look to, enforce or exhaust other or additional security, collateral or guarantees. All rights, powers or remedies may be enforced independently or concurrently in law or in equity.

No act shall constitute the City of Grand Island as an agent for the Grand Island Skeet & Sporting Clays Club, Inc. or constitute the Grand Island Skeet & Sporting Clays Club, Inc. as an agent for the City of Grand Island. The City of Grand Island is acting solely for its protection and neither the Grand Island Skeet & Sporting Clays Club, Inc. nor anyone else shall any right to rely upon the City of Grand Island or on any of the city's procedures for Grand Island Skeet & Sporting Clays Club, Inc.'s protection or otherwise.

The City of Grand Island shall have the right to inspect the construction at reasonable times. Inspections will be solely for the city's benefit. The Grand Island Skeet & Sporting Clays Club, Inc. shall select its contractors, sub-contractors and material men and the city shall neither have nor assume any responsibility for them or the quality of their materials or work.

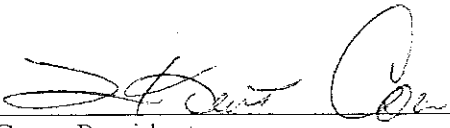
The Grand Island Skeet & Sporting Clays Club, Inc. shall keep accurate records of the construction and maintain the records to clearly set out the cost of construction. The Grand Island Skeet & Sporting Clays Club, Inc. shall make all books and records available to the city at designated times for examination and audit.

The Grand Island Skeet & Sporting Clays Club, Inc. shall comply with and have the improvements constructed in accordance with all applicable federal, state, county and city laws, ordinances, building codes and regulations.

The Grand Island Skeet & Sporting Clays Club, Inc. shall agree to indemnify the City of Grand Island from all loss, damage and expense, including court costs and attorneys fees from all actions brought against the City of Grand Island connected with alleged defects in any structure or other improvement constructed on the real estate due to, without limitation, faulty materials, faulty workmanship or defective design.

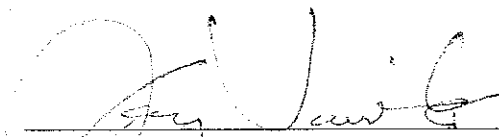
All notices shall be in writing and deemed to have been sufficiently given when presented personally or sent by regular first class mail to the City of Grand Island at 100 East First Street, P.O. Box 1968, Grand Island, Nebraska, 68802 and to the Grand Island Skeet & Sporting Clays Club, Inc. at P.O. Box 1117, Grand Island, Nebraska.

GRAND ISLAND SKEET & SPORTING CLAYS CLUB, INC.,


By: 
L. Kent Coen, President

Date: 3-17-04

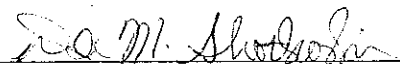
CITY OF GRAND ISLAND, NEBRASKA,
A Municipal Corporation,

By: 
Jay Vavricek, Mayor

Date: 3-22-04

Attest: 
RaNae Edwards, City Clerk

The contract is in due form according to law and hereby approved.

By: 
Dale M. Shotkoski, Assistant City Attorney

Date: 3-17-04

ASSIGNMENT AND AMENDMENT TO AGREEMENT

The CITY OF GRAND ISLAND and THE GRAND ISLAND SKEET & SPORTING CLAYS CLUB, INC., of Grand Island, Nebraska, in March of 2004, had entered into an agreement pertaining the use of funds and construction and improvements to be made on city property for skeet, trap and sporting clay range facilities, said facilities to be owned by the City of Grand Island, Nebraska.

The Grand Island Skeet & Sporting Clays Club, Inc., of Grand Island, Nebraska, has changed its name to the Heartland Public Shooting Park, and permission has been sought from the City to assign the agreement to the Heartland Public Shooting Park. It is hereby agreed by the City of Grand Island that the previous agreement is to be and shall be assigned from the Grand Island Skeet and Sporting Clays Club, Inc., of Grand Island, Nebraska, to the Heartland Public Shooting Park.

It is agreed by and between the parties that with the ongoing construction and improvements to the facility, that management of the facility needs to be provided. The Heartland Public Shooting Park is hereby agreeing to provide the management of the facility in order to provide to the general public services and the opportunity to utilize the skeet, trap and sporting clay range facilities.

The Heartland Public Shooting Park, hereinafter referred to as "Contractor", agrees to perform these services for the City of Grand Island, Nebraska, hereinafter referred to as "Owner" under the terms and conditions set forth below.

In consideration of the mutual promises set forth herein, it is agreed by and between the Owner and the Contractor:

SECTION ONE RELATIONSHIP OF THE PARTIES

The parties to this contract agree that the Contractor is a separate and independent organization and that the relationship created by this contract is that of employer/independent contractor. The Owner is interested only in the results to be achieved. The conduct and control of the work lies solely with the Contractor. Contractor is not to be considered an agent or employer of the Owner for any purpose, and the employees of Contractor are not entitled to any of the benefits that the Owner provides for the Owner's employees. It is understood that the Owner does not agree to use Contractor exclusively. It is further understood that Contractor is free to contact for similar services to be performed for other owners while Contractor is under contract with the Owner.

SECTION TWO DESCRIPTION OF WORK

1. The skeet, trap and sporting clay range facilities shall be maintained and kept open for full operation by Contractor. The specific hours of such operation shall be reasonably established by agreement between the Contractor and the Owner. Contractor agrees to abide by such established hours of operation and to assume that professional services and employees will be available to the patrons during all the hours of operation.

2. Contractor agrees that the management and operation of the skeet, trap and sporting clay range facilities shall be conducted using the highest of modern standards as employed at skeet, trap and sporting clay range facilities.

3. Contractor shall assure that the premises and grounds surrounding the facilities and that the personal property of the owner are kept in a clean and orderly condition.

4. The Contractor agrees to abide by the ordinances of the City, and statutes of the State of Nebraska and the United States, and the Rules and Regulations established by the Owner governing operation of said facilities.

SECTION THREE EMPLOYMENT OF WORKERS BY CONTRACTOR

1. Contractor shall furnish duly qualified and experienced workers to carry out the work to be performed by it under the contract. Contractor shall at all times enforce strict discipline and maintain good order among the workers engaged in such work, and shall cause such workers to observe all reasonable fire prevention and safety rules and regulations enforced at the site of the work. Contractor shall not employ any unfit person or anyone not skilled in the work assigned. Persons hired by Contractor shall be and remain Contractor's employees. Contractor shall not have jurisdiction over any of the Owner's employees or personnel.

2. The Contractor agrees to comply with all applicable state fair labor standards in the execution of this contract as required by §73-102, R.R.S., 1943. The Contractor further agrees to comply with the provisions of §48-657, R.R.S., 1943, pertaining to contributions to the Unemployment Compensation Fund of the State of Nebraska. During the performance of this contract, the Contractor and all sub-contractors agree not to discriminate in hiring or any other employment practice on the basis of race, color, religion, sex, national origin, political affiliation, age or disability. Contractor agrees to comply with all applicable local, state and federal rules and regulations.

3. The Contractor agrees with Owner that it shall maintain a Drug-Free Workplace Policy and that a Drug-Free Workplace Policy for itself and any of its employees shall be made available to Owner upon request. No employee of the Contractor, while on any City property as an employee of the Contractor shall be allowed to consume any alcohol or any illegal drugs of any kind.

SECTION FOUR

LIMITATION ON DELEGATION OF PERSONAL SERVICES BY CONTRACTOR

The work and services provided for herein shall be performed by Contractor, and no person other than regular associates or employees of Contractor shall be engaged upon such work or services except upon written approval of Owner, provided that this provision shall not apply to secretarial, clerical, routine mechanical and similar incidental services needed by Contractor to assist in the performance of this contract. In the performance of the work herein contemplated, Contractor is an independent contractor with the authority to control and direct the performance of the details of the work, Owner being interested only in the results obtained. The work contemplated herein must meet the approval of the Owner and shall be subject to Owner's general right of inspection and supervision to secure the satisfactory completion thereof. Contractor is not prohibited from making use of screened volunteers acceptable to the Contractor when necessary with proper notice being given to the Owner.

SECTION FIVE

INSURANCE

Contractor shall continue to maintain insurance as set out in original agreement. Contractor furthermore shall maintain workers compensation insurance. The insurance shall protect the Contractor against all claims under applicable state workers compensation laws. Contractor shall also be protected against claims for injury, disease or death of employees, which for any reason, may not fall within the provisions of the workers compensation law. This policy shall include an "all states" endorsement. The liability limits shall not be less than the following:

Workers Compensation	Statutory Limit
Employer's Liability	\$100,000 per person
	\$100,000 per disease
	\$500,000 policy limit

SECTION SIX

COMPENSATION

Owner agrees as compensation to the Contractor, to allow the Contractor during the developmental stages of the facility that the parties are in, to keep and maintain any and all funds received for the events sponsored by the Contractor. Owner and Contractor agree to review annually the revenues generated by the facility and this shall be subject to modification as further development to the facility is made.

SECTION SEVEN

DURATION

The original contract shall remain in place for the terms outlined in the original period. The amendment concerning the use of employees by the Contractor to manage the facility shall run on an annual basis from the date of this amendment. The parties shall meet at a minimum of sixty (60) days prior to the end of every year in which the contract is in place, to review the revenues and operational needs of the facility. Either party may terminate this contract at the end of any year upon at least thirty (30) days prior written notice.

**SECTION EIGHT
ASSIGNMENT**

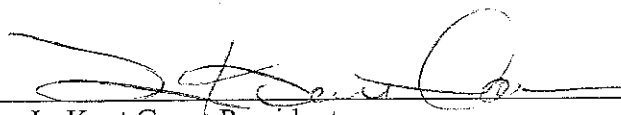
This Assignment and Amendment in no way modifies or changes the terms of the original agreement other than renaming the parties to the agreement; and the Heartland Public Shooting Park agrees to carry out all of the duties and agreements set out in the original agreement to be carried out by the Grand Island Skeet and Sporting Clays Club, Inc., of Grand Island, Nebraska.

IN WITNESS WHEREOF, the parties hereto have executed this Assignment and Amendment to the original agreement.

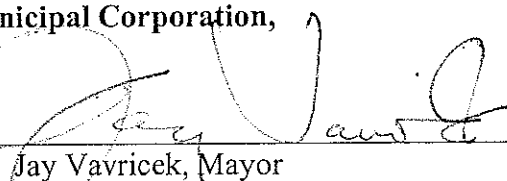
GRAND ISLAND SKEET & SPORTING CLAYS CLUB, INC.,

By:  Date: 9-28-04
L. Kent Coen, President

HEARTLAND PUBLIC SHOOTING PARK,

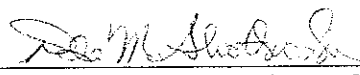
By:  Date: 9-28-04
L. Kent Coen, President

**CITY OF GRAND ISLAND, NEBRASKA
A Municipal Corporation,**

By:  Date: 10-4-04
Jay Vavricek, Mayor

Attest: 
RaNae Edwards, City Clerk

The Assignment and Amendment is in due form according to law and hereby approved.

By:  Date: 10-1-04
Dale M. Shotkoski, Assistant City Attorney

205

**SECOND AMENDMENT
TO
AGREEMENT BETWEEN
CITY OF GRAND ISLAND, NEBRASKA
AND
THE HEARTLAND PUBLIC SHOOTING PARK
FORMERLY KNOWN AS
THE GRAND ISLAND SKEET & SPORTING CLAYS CLUB, INC.**

The City of Grand Island and the Heartland Public Shooting Park, having previously entered into an agreement pertaining to the use of funds and construction and improvements and management of city property for skeet, trap at the shooting clay range facility. As of October 1, 2005, the agreement will be amended due to the continuation of improvements being made at the facility and with the City taking over the management of the facility.

On October 1, 2005, or earlier, upon the City of Grand Island hiring a shooting park superintendent, the City of Grand Island will assume responsibility for the management of the facility.

The Heartland Shooting Park agrees continue to cooperate with the City of Grand Island in assisting with the operation of the facility.

In exchange for the Heartland Public Shooting Park continued cooperation, members of the Heartland Public Shooting Park who volunteer fifty (50) hours of service to the facility shall continue to be provided a discounted rate per round. The discount rate per round is One Dollar and Fifty Cents (\$1.50) per round for its members who commit to volunteering 50 hours per calendar year. The Heartland Public Shooting Park, recognizing that government funds have been used for the improvements, shall make a commitment to the city to comply with all state and federal requirements for its membership to be open, non-discriminatory and available to all who can abide by the by-laws of the organization.

The City of Grand Island, recognizing that the knowledge and expertise of many members of the Heartland Public Shooting Park has been a valuable part of the construction and improvements for the facility, will agree to allow the Heartland Public Shooting Park to serve as an advisory board for the City Parks and Recreation Department Director and Shooting Park Superintendent as to the needs and future operation of the facility.

The Heartland Public Shooting Park is committed to continuing to furnish as many volunteer hours as it can to the continued operation of the skeet, trap and sporting clay range facility. It is anticipated that the Heartland Public Shooting Park shall continue to solicit funds for future improvements to the facility, however, by this agreement, the Heartland Public Shooting Park is not committed to any financial obligations to the City of Grand Island.

All other sections of the previous agreement relating to the management of the facility shall be deleted by this agreement.

This agreement shall be reviewed every two (2) years from October 1, 2005, and amended as needed for the continued success and operation of the facility.

It is further agreed that the membership of the Heartland Public Shooting Park recognizes that the management responsibilities as of October 1, 2005, shall be transferred to the City of Grand Island or earlier upon the city hiring a shooting park superintendent and the Heartland Public Shooting Park agrees to provide their support and cooperation with the City of Grand Island and its employees in the operation of the facility.

HEARTLAND PUBLIC SHOOTING PARK,

By: _____ Date: _____
L. Kent Coen, President

**CITY OF GRAND ISLAND, NEBRASKA
A Municipal Corporation,**

By: _____ Date: _____
Jay Vavricek, Mayor

Attest: _____
RaNae Edwards, City Clerk

The Assignment and Amendment is in due form according to law and hereby approved.

By: _____ Date: _____
Dale M. Shotkoski, Assistant City Attorney

RESOLUTION 2007-187

WHEREAS, the 2007/2008 budget process requires a projection of the personnel costs;
and

WHEREAS, because of the city's growth and expansion of city services and operations,
additional staffing is necessary; and

WHEREAS, the net result would be an increase of 4.77 Full Time Equivalent Employees
(FTE) and \$155,613.00 in the general fund and 7.27 FTE'S and \$260,844.00 city wide.

NOW, THEREFORE, BE IT RESOLVED BY THE MAYOR AND COUNCIL OF
THE CITY OF GRAND ISLAND, NEBRASKA, that the 2007/2008 proposed budget be prepared to
include the 4.77 FTE's and \$155,613.00 in the general fund and 7.27 FTE'S and \$260,844.00 city wide.

- - -

Adopted by the City Council of the City of Grand Island, Nebraska, August 7, 2007.

Margaret Hornady, Mayor

Attest:

RaNae Edwards, City Clerk