



# City of Grand Island

Tuesday, November 12, 2002

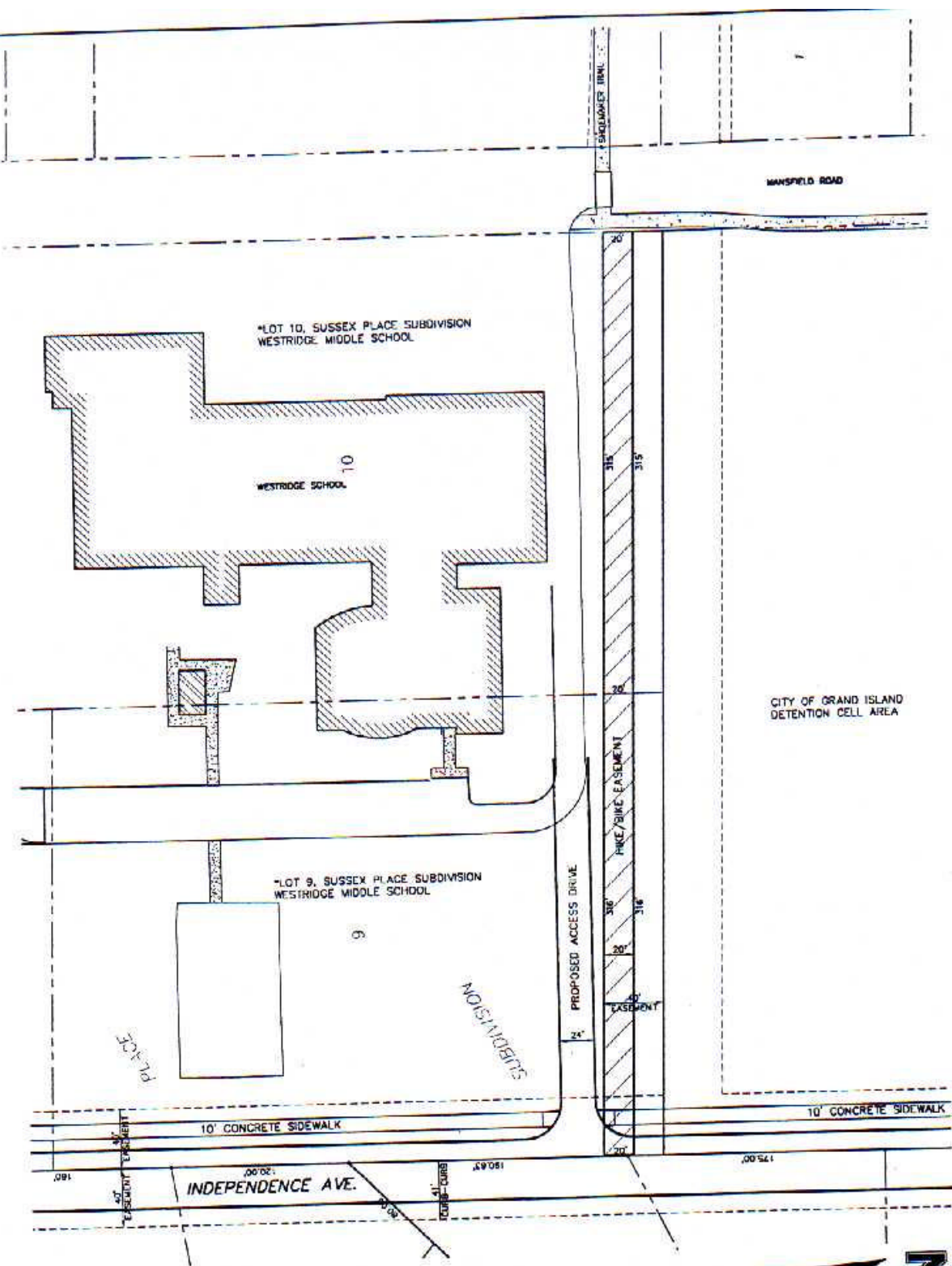
Speical Mtg/Council Session

## Item E1

### **Public Hearing on Acquisition of Easement for Bike Trail in Lot 9, Sussex Place Subdivision Near Westridge Middle School**

*Council action is necessary for the City of Grand Island to acquire public easement for the formation of bike trails. In conjunction with the acquisition of Right of Way for the extension of Independence Avenue, it is appropriate to acquire easement for future installation of the Shoemaker Bike Trail. This easement will allow the Shoemaker Bike Trail to be connected to trails that will be installed with the extension of Independence south to 13th Street. The bike trail should be built in conjunction with the extension of Independence. It is recommended that Council conduct a Public Hearing and pass a Resolution authorizing staff to acquire the easement. The cost of the easement is expected to be minimal. It is appropriate to solicit public comment. The action item is contained under the Consent Agenda.*

Staff Contact: Steve Riehle



  
 SCALE: 1" = 100'

**LEGAL DESCRIPTION**

A PERMANENT HIKE/BIKE EASEMENT COMPRISED OF THE NORTH 20 FEET OF THE SOUTH 40 FEET OF LOTS 9 AND 10, SUSSEX PLACE SUBDIVISION, CITY OF GRAND ISLAND, HALL COUNTY, NEBRASKA. SAID EASEMENT CONTAINS 12,609 SQUARE FEET OR 0.29 ACRES MORE OR LESS OF WHICH 12,609 SQUARE FEET OR 0.29 ACRES IS EXISTING DEDICATED EASEMENT.

HIKE/BIKE PATH EASEMENT LOTS 9 & 10, SUSSEX PLACE SUBDIVISION CITY OF GRAND ISLAND, NEBRASKA	<b>OLSSON ASSOCIATES</b> CONSULTING ENGINEERS 201 EAST 2ND ST., GRAND ISLAND, NE 68801	DATE: OCT. 2002 <small>DA#2001-0895</small>
--	--	---