



City of Grand Island

Tuesday, December 4, 2012

Council Session

Item E1

Public Hearing Regarding State Revolving Funds for the Extension of City Sanitary Sewer along US Highway 281 to Interstate 80

Staff Contact: Terry Brown, Interim Public Works Director

Council Agenda Memo

From: Terry Brown, Manager of Engineering Services

Meeting: December 4, 2012

Subject: Public Hearing Regarding State Revolving Funds for the Extension of City Sanitary Sewer along US Highway 281 to Interstate 80

Item #'s: E-1

Presenter(s): Terry Brown, Interim Public Works Director

Background

The City was approached by Nebraska Department of Environmental Quality (NDEQ) and several businesses along US Highway 281 in the vicinity of Interstate 80 about the possibility of extending City sanitary sewer to serve their property. The businesses currently treat their wastewater and will have to invest significant dollars into their existing treatment systems, in order to address permit issues with the Nebraska Department of Environmental Quality (NDEQ) National Pollutant Discharge Elimination System (NPDES).

As an alternative, the dollars that the businesses would spend upgrading their private systems could be put towards a public/private project to extend City sanitary sewer to serve their properties. With the potential for a significant investment into private wastewater treatment systems, it is prudent to consider extending City sanitary sewer.

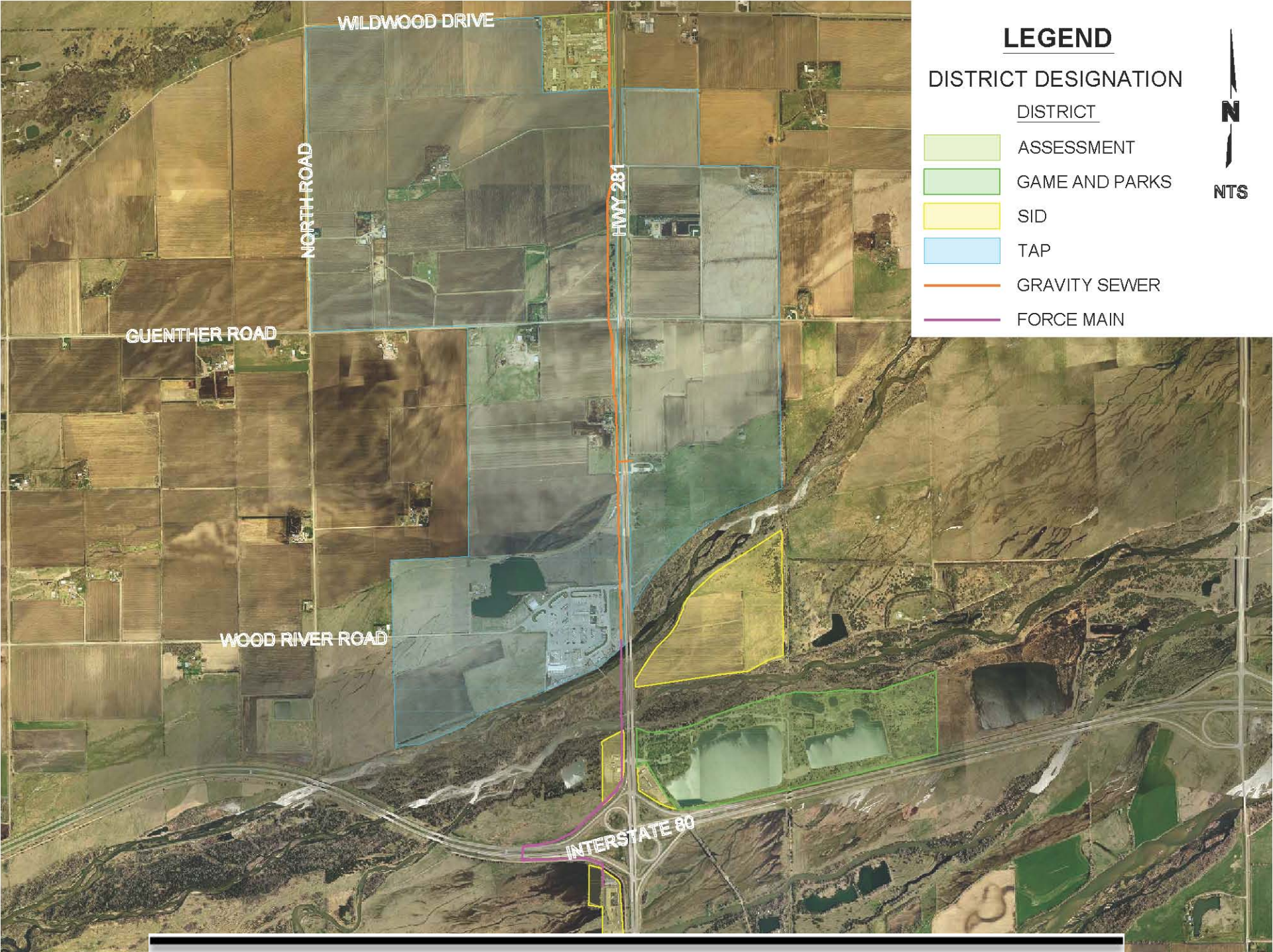
Discussion

The sanitary sewer project consists of an extension of gravity sewer beginning at the southeast corner of Wildwood Subdivision (tie in to City system) and will include approximately: 205 l.f. of 24" gravity sewer followed by 4,863 l.f. of 21" gravity sewer followed by 5,518 l.f. of 18" gravity sewer terminating at north bank of Platte River near Bosselman Travel Center. A new lift Station near Quality Inn Motel will be able to pump to the gravity sewer. Additionally, 6,500 l.f. of 6" or 8" force main sewer from the lift station near Quality Inn Motel would then be installed to connect to gravity sewer near Bosselman Travel Center. This system is sized appropriately for possible future connections in the area.

The total project cost is estimated at \$2.5 million, with funding provided from the NDEQ State Revolving Funds (SRF) at 2.5% interest for 20 years. The funding is expected to be repaid through tap fees, via an Interlocal Agreement or Sanitary Sewer Improvement District and would not affect the existing sewer rates for the Grand Island sewer customers. There is also approximately \$350,000 in environmental penalty money from JBS Swift that will be applied to this project or the Wildwood sanitary sewer project.

Conclusion

This public hearing is being held to allow for general information and discussion on the proposed project and allow for interested parties to appear and express their views.





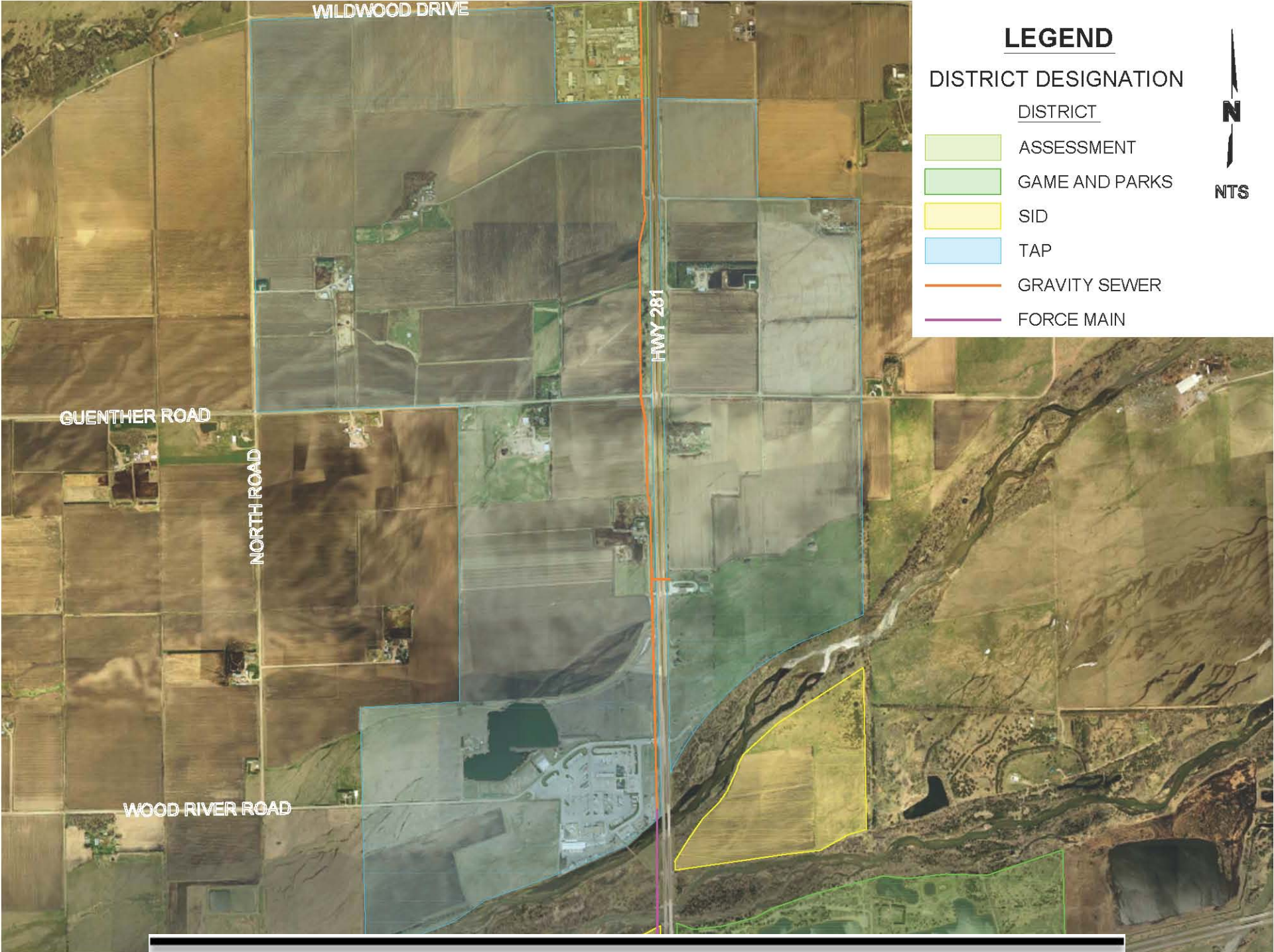
LEGEND

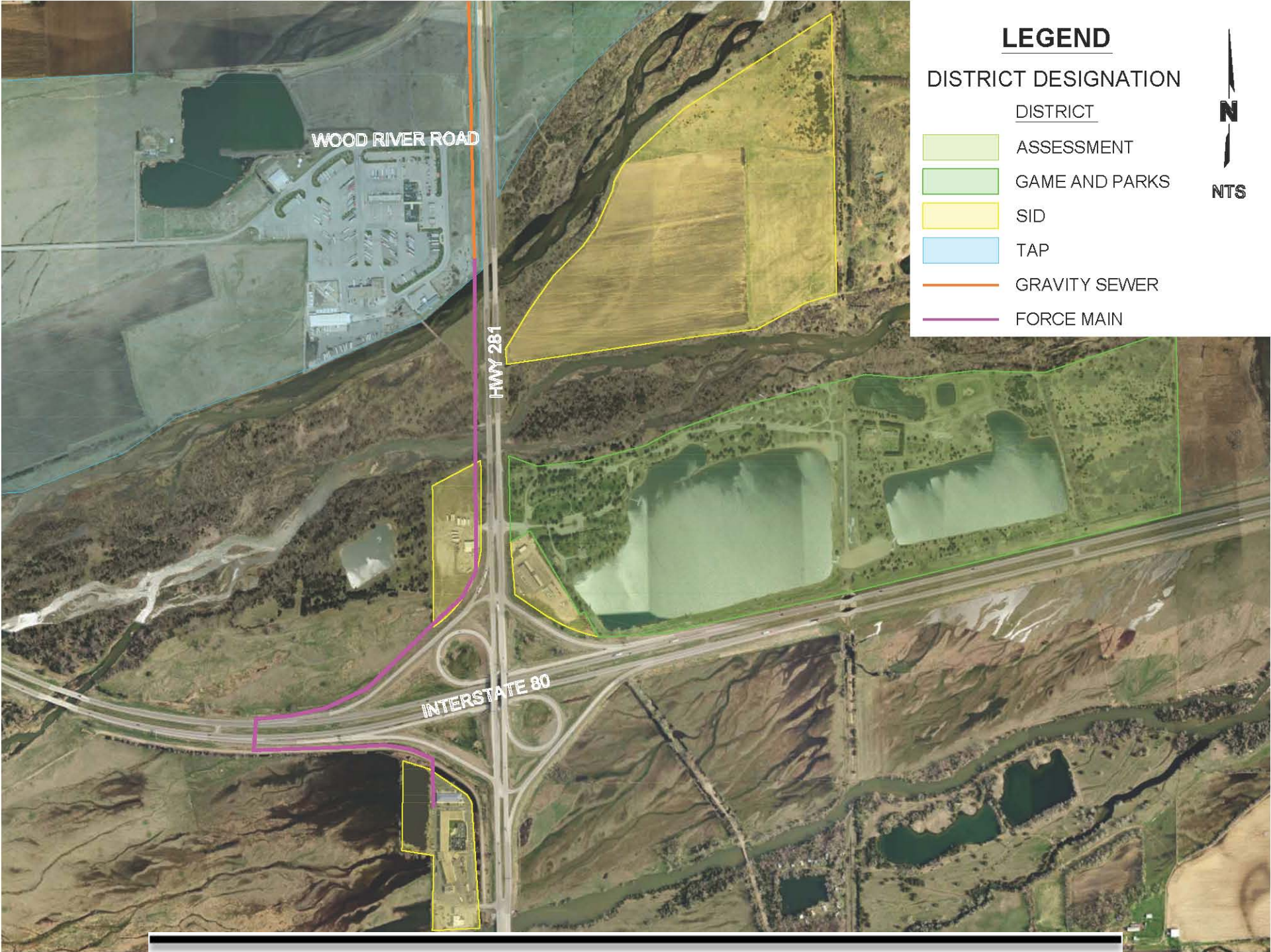
DISTRICT DESIGNATION

DISTRICT

- ASSESSMENT
- GAME AND PARKS
- SID
- TAP
- GRAVITY SEWER
- FORCE MAIN







LEGEND

DISTRICT DESIGNATION

DISTRICT

- ASSESSMENT
- GAME AND PARKS
- SID
- TAP
- GRAVITY SEWER
- FORCE MAIN

