



# City of Grand Island

Tuesday, October 9, 2012

Council Session

## Item C2

### **Presentation of Capital Avenue Project – Webb Road to Broadwell Avenue**

*The Capital Avenue – Webb Road to Broadwell Avenue project will improve Capital Avenue from a two-lane asphalt roadway to a five-lane concrete roadway. Other improvements include updated street lighting, new storm sewer and a 10' concrete trail. This project is made possible through funds provided by the Nebraska Department of Roads Surface Transportation Program and the Federal Highway Administration.*

*Matt Rief, PE, of Olsson Associates will present the proposed project and summarize feedback that was received at the August 21 Public Informational Meeting. Terry Brown, PE, Interim Public Works Director and Scott Gripenstroh, Project Manager will be available to address questions and concerns regarding the project.*

**Staff Contact: Terry Brown, Interim Public Works Director**



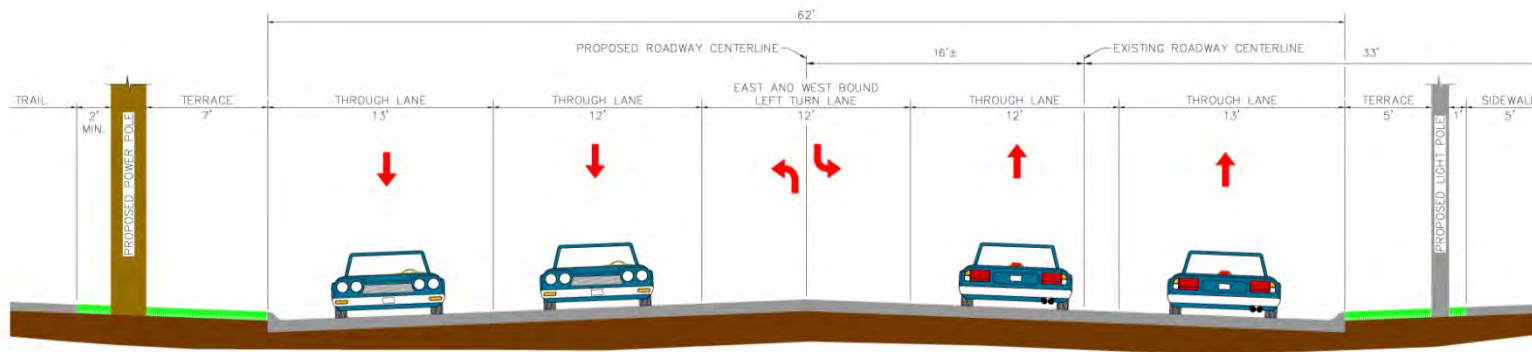
# Capital Avenue Project





# Traffic Review

- Proposed Roadway Section





# Capital Avenue Project





# Capital Avenue Project





# Right of Way Sensitive Design



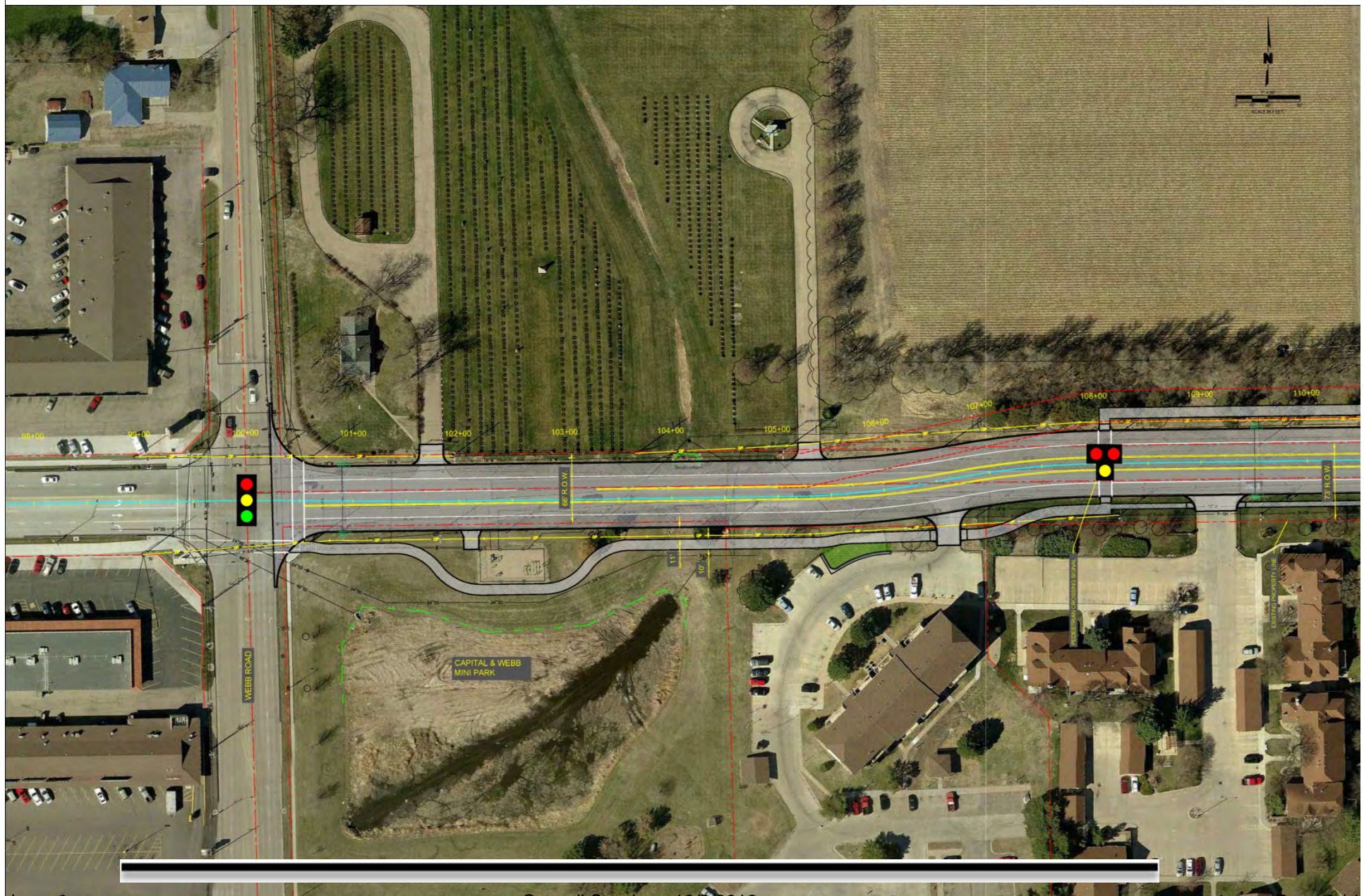


# Webb Road Intersection





# Webb Road Intersection



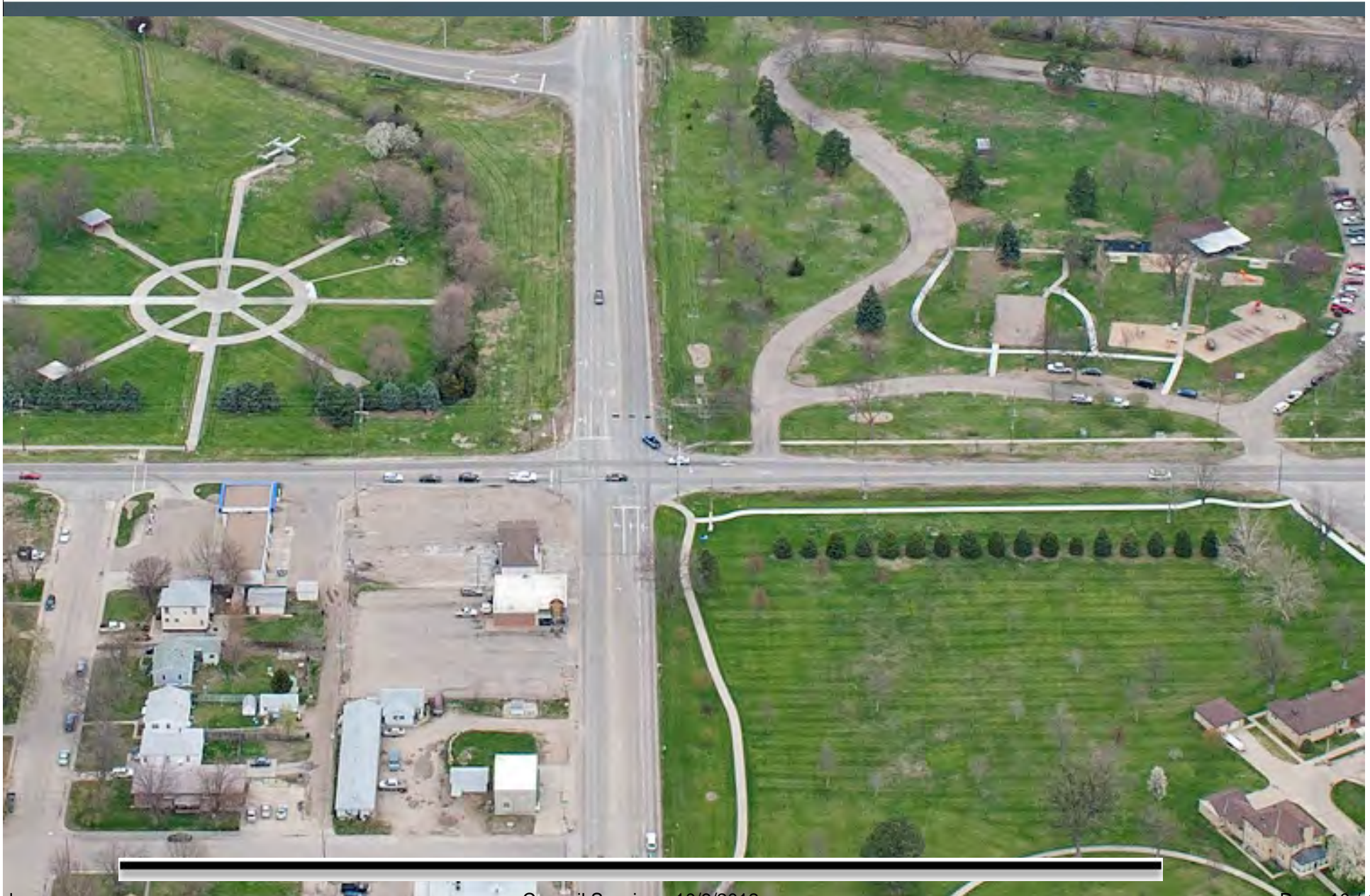


# HAWK Pedestrian Signal Crossing





# Broadwell Avenue Intersection





# Broadwell Avenue Intersection

Drive Closure





# Broadwell Avenue Intersection





# August 21<sup>st</sup> Public Meeting

- 110-140 attendees
- 33 comment forms received
- Generally support project
- 5 comments not support project
- Custer Avenue Intersection
- Object to Assessment District

## Grand Island Capital Avenue Improvements: WEBB ROAD TO BROADWELL AVENUE

PUBLIC MEETING | AUGUST 21, 2012

UNITED VETERAN'S CLUB  
1914 W Capital Avenue, Grand Island, Nebraska

### WELCOME

This is the public information meeting/open house for the Capital Avenue Improvements project, from Webb Road to Broadwell Avenue. The project is currently in the early design stages. Upon review of current and future traffic demands, the project scope has increased from a three-lane improvement to a five-lane improvement.

At tonight's open house, members of the engineering project team will discuss the roadway reconstruction project, show preliminary design layouts, and answer questions. This meeting is a time for the project team to give you an update on the project, as well as for you to give us feedback concerning any comments you may have about the proposed improvements. This feedback will help us gain more knowledge of the corridor and improve the overall project design.

### PROJECT HIGHLIGHTS

- Reconstruct Capital Avenue from a 24-foot-wide, two-lane roadway to a 62-foot-wide, five-lane roadway from Webb Road to Broadwell Avenue. This will require shifting the roadway centerline north to avoid impacts to residential homes.
- Reconstruct the Broadwell Avenue intersection, which will include a new traffic signal.
- Reconstruct side streets and driveways, as needed, to accommodate the new roadway.
- Add storm sewer pipe and inlets along Capital Avenue.
- Add roadway lighting.
- Construct a new sanitary sewer trunk main along the corridor.
- Reconstruct utilities to include relocating the overhead power line along the project's north side and relocate gas and communication facilities.
- Assess minor green space impacts to the parks along the project.
- Add new sidewalks and curb ramps at intersections to comply with ADA standards.
- Construct a new pedestrian/bike trail from Webb Road to Broadwell Avenue, connecting with Veterans Memorial Park and Ashley Park, and, eventually, Veterans Sports Complex. This will include a new pedestrian signal crossing east of Webb Road.

### SCHEDULE AND CONSTRUCTION

Olsson Associates will work on the roadway design over the next several months. Another information meeting is anticipated in Spring 2013 where a more detailed roadway design will be presented. After this meeting, the project team will finalize the right-of-way and easements needed to construct the project. Construction is expected to begin Fall 2014.

### TONIGHT'S AGENDA

5:30 p.m.  
Open house begins

6:00 p.m.  
Presentation

6:15 p.m. – 7:00 p.m.  
View stations and speak  
with project team members

### QUESTIONS?

For more information,  
please contact:

Matt Rief, PE, Project Manager  
Olsson Associates  
308.384.8750  
mrief@olssonassociates.com


Scott Gripenstroh, Project Manager  
City of Grand Island  
308.385.5444 ext. 265  
scottg@grand-island.com





## Paving Assessment Districts

### Nebraska State Revised Statute 16-606

-  “The council may assess and levy the whole expense and damage incurred in the creation of any street, avenue, or alley upon the real property fronting upon the same and other property nearby that may be benefited thereby **in proportions according to benefits.**”