



# City of Grand Island

Tuesday, September 11, 2012

Council Session

## Item E9

**Public Hearing on Acquisition of Utility Easement - 518 East  
Capital Avenue - Capital Mobile Home Park, LLC**

Staff Contact: Tim Luchsinger, Utilities Director

# **Council Agenda Memo**

**From:** Robert H. Smith, Asst. Utilities Director  
**Meeting:** September 11, 2012  
**Subject:** Acquisition of Utility Easement – 518 East Capital Avenue –  
Capital Mobile Home Park, LLC  
**Item #'s:** E-9 & G-6  
**Presenter(s):** Timothy Luchsinger, Utilities Director

## **Background**

Nebraska State Law requires that acquisition of property must be approved by City Council. The Utilities Department needs to acquire an easement relative to the property of, Capital Mobile Home Park, LLC, located at 518 East Capital Avenue, in the City of Grand Island, Hall County, Nebraska, in order to have access to install, upgrade, maintain, and repair power appurtenances, including lines and transformers.

## **Discussion**

The overhead electrical lines in Capital Mobile Home Park are 50 to 60 years old and are in need of replacement. Over the years the mobile homes have increased in size causing the Park to rearrange them to fit within the confines of the Park. By doing so, the easement across the Park needs to change location slightly to stay in a clear area. This easement will effect that change.

## **Alternatives**

It appears that the Council has the following alternatives concerning the issue at hand. The Council may:

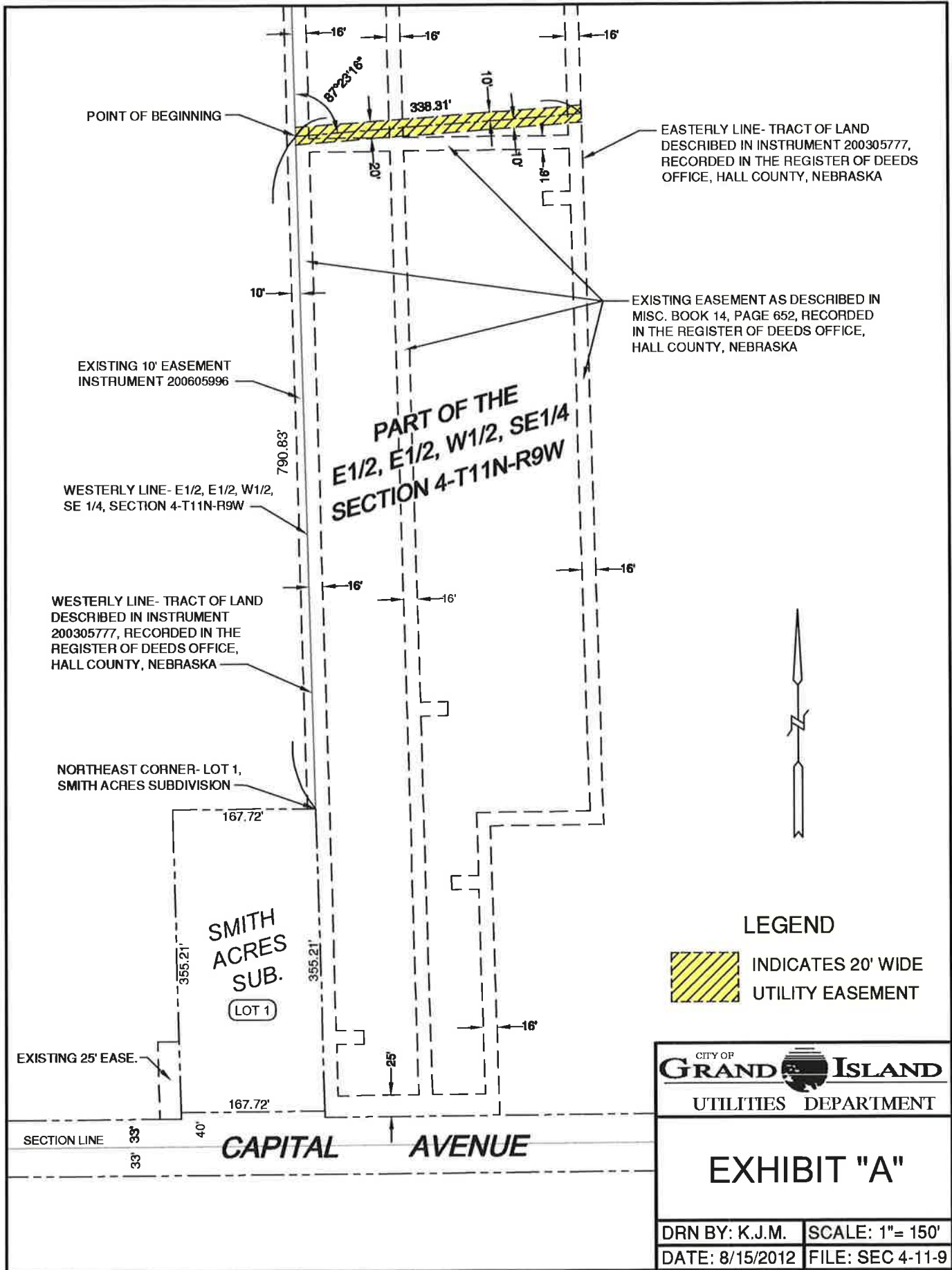
1. Make a motion to approve
2. Refer the issue to a Committee
3. Postpone the issue to future date
4. Take no action on the issue

## **Recommendation**

City Administration recommends that the Council approve the resolution for the acquisition of the easement for one dollar (\$1.00).

## **Sample Motion**

Move to approve acquisition of the Utility Easement.



CITY OF  
**GRAND ISLAND**  
 UTILITIES DEPARTMENT

# EXHIBIT "A"

DRN BY: K.J.M.	SCALE: 1"= 150'
DATE: 8/15/2012	FILE: SEC 4-11-9