



City of Grand Island

Tuesday, September 11, 2012

Council Session

Item G4

#2012-239 - Approving Final Plat and Subdivision Agreement for Sophie Acres Subdivision

Staff Contact: Chad Nabity

Council Agenda Memo

From: Regional Planning Commission
Meeting: September 11, 2012
Subject: Sophie Acres Subdivision - Final Plat
Item #'s: G-4
Presenter(s): Chad Nability AICP, Regional Planning Director

Background

This property is located east of Gunbarrel Road and south of Bismark Road. This final plat proposes to create 1 Lot on a tract of land comprising a part of the West Half of the Southwest Quarter (W1/2 SW1/4), Section Nineteen (19), Township Eleven (11) North, Range Eight (8), in the two mile jurisdiction of the City of Grand Island, Merrick County, Nebraska, said tract containing 10.229 acres.

Discussion

The revised plat for Sophie Acres Subdivision Final Plat was considered by the Interjurisdictional Planning Commission at the September 5, 2012 meeting.

A motion was made by Ericksen and seconded by Wiegert to approve the plat as presented. A motion was also made to approve the Final Plat for Sophie Acres Subdivision.

A roll call vote was taken and the motion passed with 4 members present and voting in favor (Eriksen, Connelly, Bredthauer and Wiegert) and no one voting against.

Alternatives

It appears that the Council has the following alternatives concerning the issue at hand. The Council may:

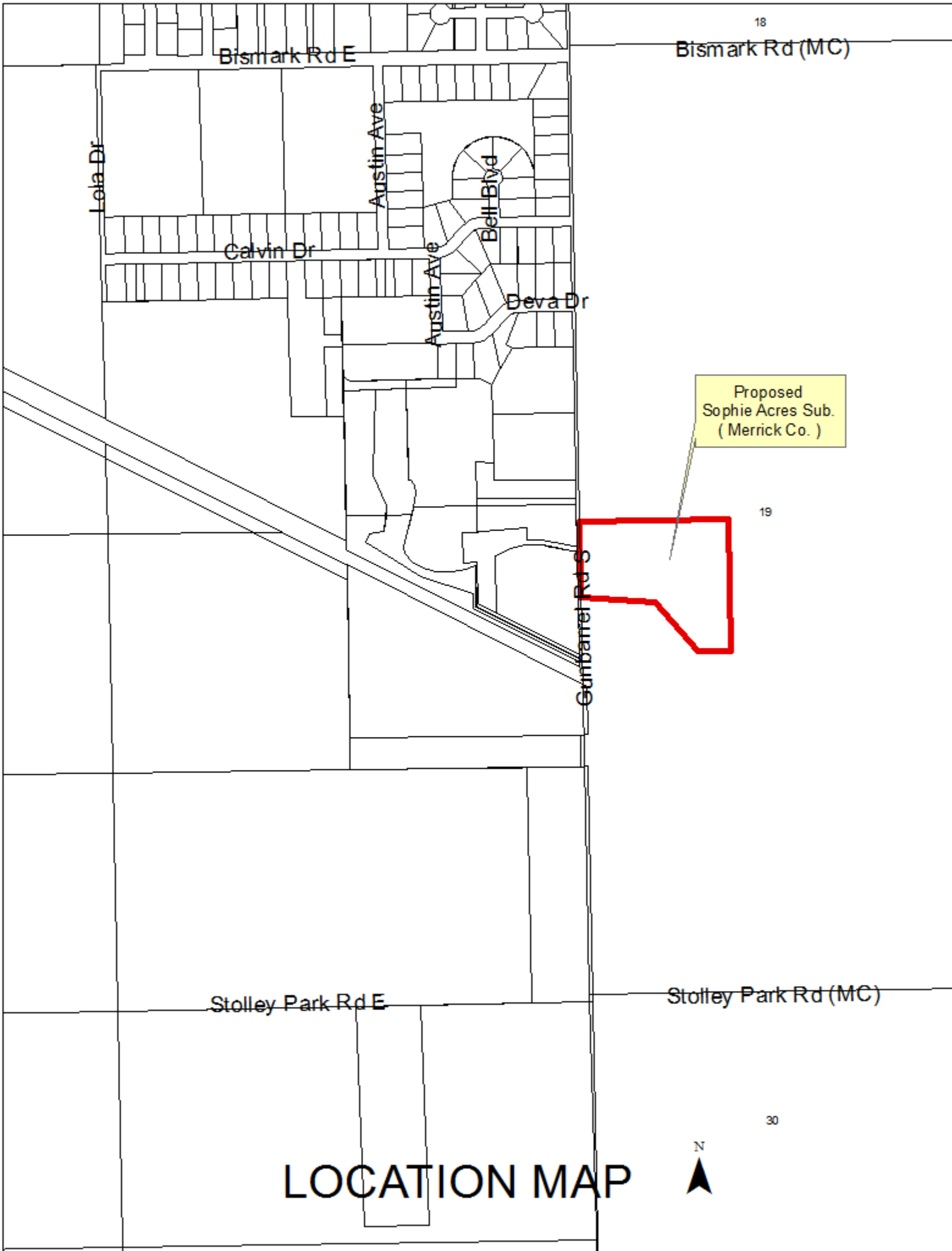
1. Move to approve
2. Refer the issue to a Committee
3. Postpone the issue to future date
4. Take no action on the issue

Recommendation

City Administration recommends that the Council approve the final plat as presented.

Sample Motion

Move to approve as recommended.



LOCATION MAP

**Sterling Estates Second Subdivision
Developer/Owner**

Tommy Ummel Jr.
1475 South Gunbarrel Road
Grand Island NE 68801

To create 1 lot east of Gunbarrel Road and south of Bismark Road, in the two mile jurisdiction of the City of Grand Island, in Merrick County, Nebraska.

Size: 10.229 acres

Zoning:

Road Access: County Road

Water Public: City water is not available

Sewer Public: City sewer is not available



RESOLUTION 2012-239

WHEREAS, Tommy L. Ummel Jr. and Cary K. Ummel, husband and wife being the said owners of the land described hereon, have caused same to be surveyed, subdivided, platted and designated as "SOPHIE ACRES SUBDIVISION", to be laid out into 1 lot, a tract of land comprising a part of the West Half of the Southwest Quarter (W1/2 SW1/4), of Section Nineteen (19), Township Eleven (11) North, Range Eight (8) West of the 6th P.M., in the two mile jurisdiction of the City of Grand Island, Merrick County Nebraska, and has caused a plat thereof to be acknowledged by it; and

WHEREAS, a copy of the plat of such subdivision has been presented to the Boards of Education of the various school districts in Grand Island, Hall County, Nebraska, as required by Section 19-923, R.R.S. 1943; and

WHEREAS, a form of subdivision agreement has been agreed to between the owner of the property and the City of Grand Island.

NOW, THEREFORE, BE IT RESOLVED BY THE MAYOR AND COUNCIL OF THE CITY OF GRAND ISLAND, NEBRASKA, that the form of subdivision agreement hereinbefore described is hereby approved, and the Mayor is hereby authorized to execute such agreement on behalf of the City of Grand Island.

BE IT FURTHER RESOLVED that the final plat of SOPHIE ACRES SECOND SUBDIVISION, as made out, acknowledged, and certified, is hereby approved by the City Council of the City of Grand Island, Nebraska, and the Mayor is hereby authorized to execute the approval and acceptance of such plat by the City of Grand Island, Nebraska.

- - -

Adopted by the City Council of the City of Grand Island, Nebraska, September 11th, 2012.

Jay Vavricek, Mayor

Attest:

RaNae Edwards, City Clerk

Approved as to Form	☒ _____
September 7, 2012	☒ City Attorney