



# City of Grand Island

Tuesday, July 24, 2012

Council Session

## Item G7

**#2012-181 - Approving Final Plat and Subdivision Agreement for Sheaffer Second Subdivision**

Staff Contact: Chad Nabity

# Council Agenda Memo

**From:** Regional Planning Commission  
**Meeting:** July 24, 2012  
**Subject:** Sheaffer Second Subdivision – Final Plat  
**Item #'s:** G-7  
**Presenter(s):** Chad Nability AICP, Regional Planning Director

## Background

This property is located west of Claude Rd and south of Arch Ave., in the City of Grand Island, in Hall County, Nebraska. Consisting of (2 Lot) and 5.5.6046 acres.

## Discussion

The revised final plat for Sheaffer Second Subdivision was considered by the Regional Planning Commission at the July 11, 2012 meeting. A motion was made by Bredthauer and seconded by Hayes to approve the plat as presented. A roll call vote was taken and the motion passed with 8 members present (McCarty, Snodgrass, O'Neill, Ruge, Hayes, Reynolds, Haskins, Bredthauer) voting in favor no member present abstaining.

## Alternatives

It appears that the Council has the following alternatives concerning the issue at hand. The Council may:

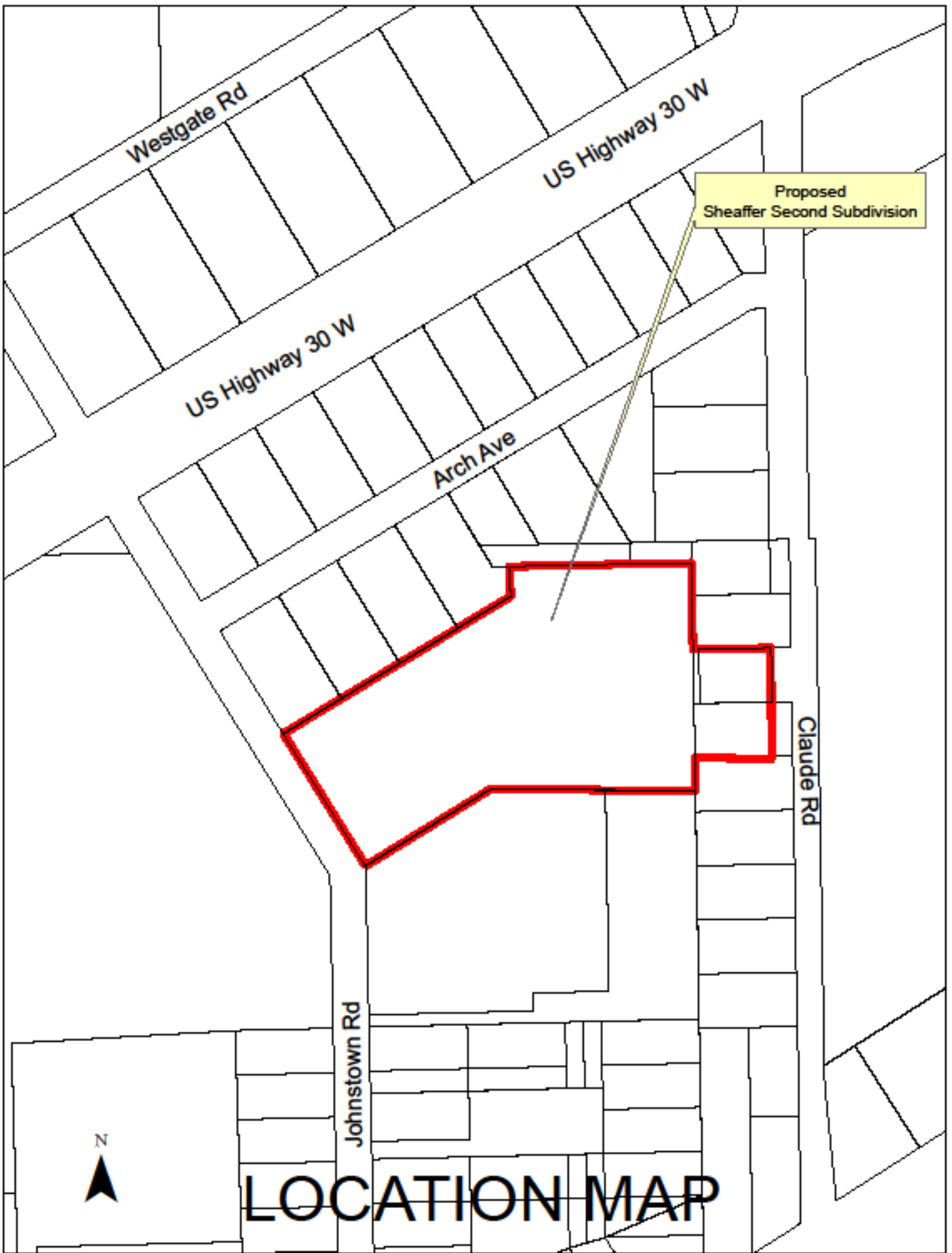
1. Move to approve
2. Refer the issue to a Committee
3. Postpone the issue to future date
4. Take no action on the issue

## Recommendation

City Administration recommends that the Council approve the final plat as presented.

## Sample Motion

Move to approve as recommended.



**Kevin J Houtwed & Karen Houtwed**

**Developer/Owner**

1104 S Claude Road  
Grand Island NE 68803

**PRO-TATCH INC, INC a Nebraska Corporation**

**Kevin J. Houtwed, President**

1104 S Claude Road  
Grand Island NE 68803

**PREFERED PUMP & EQUIPMENT, L.P.**

**Randy Lyne, President of PPE Genpar Inc.,**

**General Partner of Prefered Pump & Equipment, L.P.**

2201 Scott Avenue  
Ft. Worth TX 76103

**City of Grand Island**

100 E 1<sup>st</sup> St  
Grand Island NE 68801

To create 2 Lots west of Claude Road and south of Arch Ave., in the City of Grand Island, in Hall County, Nebraska.

**Size:** 5.6046

**Zoning:** M2 – Heavy Manufacturing Zone

**Road Access:** City Roads

**Water Public:** City water is available

**Sewer Public:** City sewer is available



RESOLUTION 2012-181

WHEREAS, Kevin J. Houted and Karen Houted, husband and wife, and PRO-TATCH, INC., a Nebraska Corporation, and THE CITY OF GRAND ISLAND, NEBRASKA, and REFERED PUMP & EQUIPMENT, L.P., being the owners of the land described hereon, have caused same to be surveyed, subdivided, platted and designated as SHEAFFER SECOND SUBDIVISION, to be laid out into 2 lots, a tract of land comprising a part of the Northeast Quarter of the Southwest Quarter (NW1/4 SW1/4) of Section Twenty Four (24), Township Eleven North, Range Ten (10) West of the 6<sup>th</sup> P.M., in the City of Grand Island, Hall County Nebraska, and has caused a plat thereof to be acknowledged by it; and

WHEREAS, a copy of the plat of such subdivision has been presented to the Boards of Education of the various school districts in Grand Island, Hall County, Nebraska, as required by Section 19-923, R.R.S. 1943; and

WHEREAS, a form of subdivision agreement has been agreed to between the owner of the property and the City of Grand Island.

NOW, THEREFORE, BE IT RESOLVED BY THE MAYOR AND COUNCIL OF THE CITY OF GRAND ISLAND, NEBRASKA, that the form of subdivision agreement hereinbefore described is hereby approved, and the Mayor is hereby authorized to execute such agreement on behalf of the City of Grand Island.

BE IT FURTHER RESOLVED that the final plat of SHEAFFER SECOND SUBDIVISION, as made out, acknowledged, and certified, is hereby approved by the City Council of the City of Grand Island, Nebraska, and the Mayor is hereby authorized to execute the approval and acceptance of such plat by the City of Grand Island, Nebraska.

- - -

Adopted by the City Council of the City of Grand Island, Nebraska, July 24, 2012.

---

Jay Vavricek, Mayor

Attest:

---

RaNae Edwards, City Clerk

Approved as to Form	☐ _____
July 23, 2012	☐ City Attorney