



City of Grand Island

Tuesday, June 26, 2012

Council Session

Item G4

#2012-157 - Approving Acquisition of Utility Easement - 3751 East U.S. Highway 34 - Niedfelt

This item relates to the aforementioned Public Hearing item E-6.

Staff Contact: Tim Luchsinger, Utilities Director

RESOLUTION 2012-157

WHEREAS, a public utility easement is required by the City of Grand Island, from Doralene F. Niedfelt and John C. Niedfelt, Trustees of the Jerome W. Niedfelt Family Trust, to survey, construct, inspect, maintain, repair, replace, relocate, extend, remove, and operate thereon, public utilities and appurtenances, including lines and transformers; and;

WHEREAS, a public hearing was held on June 26, 2012, for the purpose of discussing the proposed acquisition of an easement twenty feet in width, the centerline of which is located in the City of Grand Island, Hall County, Nebraska; and more particularly described as follows:

Commencing at East Quarter (E1/4) corner of Section Thirty Six (36), Township Eleven (11) North, Range Nine (9) west; thence along the easterly line of said Section Thirty Six (36) on an assumed bearing of S00°00'00"E, a distance of three hundred seventy five and forty four hundredths (375.44) feet to the ACTUAL Point of Beginning; thence continuing S00°00'00"E along the easterly line of said Section Thirty Six (36), a distance of twenty two and fifty one hundredths (22.51) feet; thence S62°42'20"W, a distance of seventy and seventy seven hundredths (70.77) feet to a point on the southeasterly line of a tract of land described in Instrument 200901159, recorded in the Register of Deeds Office, Hall County, Nebraska; thence S41°46'29"W along the said southeasterly line, a distance of three hundred fifty two and seventy one hundredths (352.71) feet; thence S39°30'23" along the said a southeasterly line, a distance of four hundred fifty nine and ninety seven hundredths (459.97) feet to a point on the easterly right-of-way line of U.S. Highway 34; thence along the easterly right-of-way line of said U.S. Highway 34 a chord bearing of N22°33'09"W, a chord distance of twenty two and sixty three hundredths (22.63) feet; thence N39°30'23"E, a distance of four hundred forty nine and seventy eight hundredths (449.78) feet; thence N41°46'29"E, a distance of three hundred fifty six and eighty hundredths (356.80) feet; thence N62°42'20" E, a distance of eight four and seventy eighty hundredths (84.78) feet to a point on the easterly line of said Section Thirty Six (36), being the said Point of Beginning.

The above-described easement and right-of-way containing 0.41 acres, more or less, as shown on the plat dated 6/7/2012, marked Exhibit "A" attached hereto and incorporated herein by reference.

NOW, THEREFORE, BE IT RESOLVED BY THE MAYOR AND COUNCIL OF THE CITY OF GRAND ISLAND, NEBRASKA, that the City of Grand Island be, and hereby is, authorized to acquire a public utility easement from Doralene F. Niedfelt and John C. Niedfelt, Trustees of the Jerome W. Niedfelt Family Trust, on the above-described tract of land.

- - -

Approved as to Form	☐ _____
June 26, 2012	☐ City Attorney

Adopted by the City Council of the City of Grand Island, Nebraska, June 26, 2012.

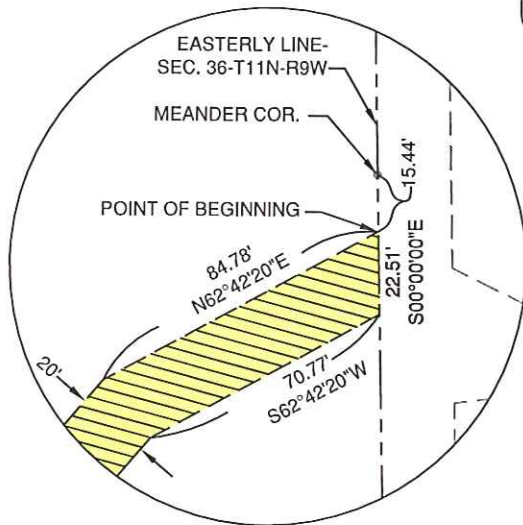
Jay Vavricek, Mayor

Attest:

RaNae Edwards, City Clerk

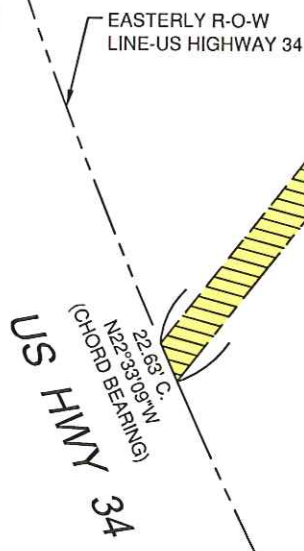
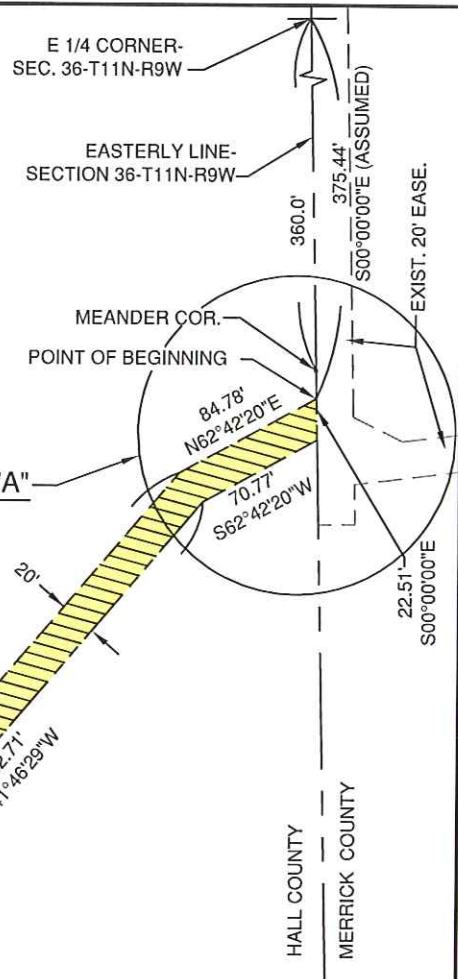
PART OF THE
E1/2, SE1/4
SECTION 36-T11N-R9W

RIVER LOT NO. 2




DETAIL "A"

SEE DETAIL "A"



LEGEND

-  INDICATES 20' WIDE UTILITY EASEMENT

CITY OF GRAND ISLAND	
UTILITIES DEPARTMENT	
EXHIBIT "A"	
DRN BY: K.J.M.	SCALE: 1"= 100'