



City of Grand Island

Tuesday, June 26, 2012

Council Session

Item E6

**Public Hearing on Acquisition of Utility Easement - 3751 East U.S.
Highway 34 - Niedfelt**

Staff Contact: Tim Luchsinger, Utilities Director

Council Agenda Memo

From: Robert H. Smith, Asst. Utilities Director

Meeting: June 26, 2012

Subject: Acquisition of Utility Easement – 3751 East U.S. Highway 34 – Niedfelt

Item #'s: E-6 & G-4

Presenter(s): Timothy Luchsinger, Utilities Director

Background

Nebraska State Law requires that acquisition of property must be approved by City Council. The Utilities Department needs to acquire an easement relative to the property of Doralene F. Niedfelt and John C. Niedfelt, Trustees of the Jerome W. Niedfelt Family Trust, located along the easterly property line of 3751 E. U.S. Highway 34, Hall County, Nebraska, in order to have access to install, upgrade, maintain, and repair power appurtenances, including lines and transformers.

Discussion

The Utilities Department would like an easement to allow a power line from an existing line across the Niedfelt property to a new home being built south and west of this property. The alternative would be a much longer line along Highway 34.

Alternatives

It appears that the Council has the following alternatives concerning the issue at hand. The Council may:

1. Make a motion to approve
2. Refer the issue to a Committee
3. Postpone the issue to future date
4. Take no action on the issue

Recommendation

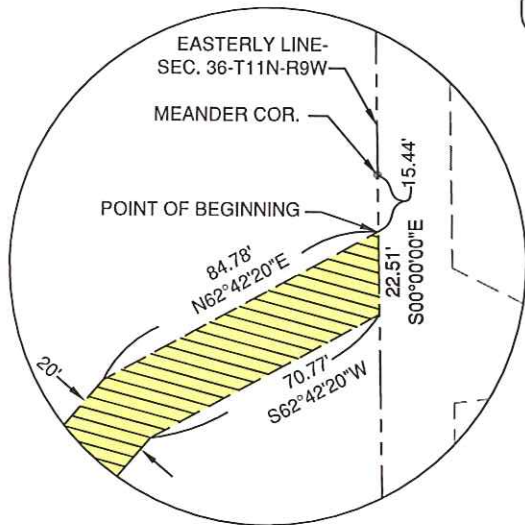
City Administration recommends that the Council approve the resolution for the acquisition of the easement for one dollar (\$1.00).

Sample Motion

Move to approve acquisition of the Utility Easement.

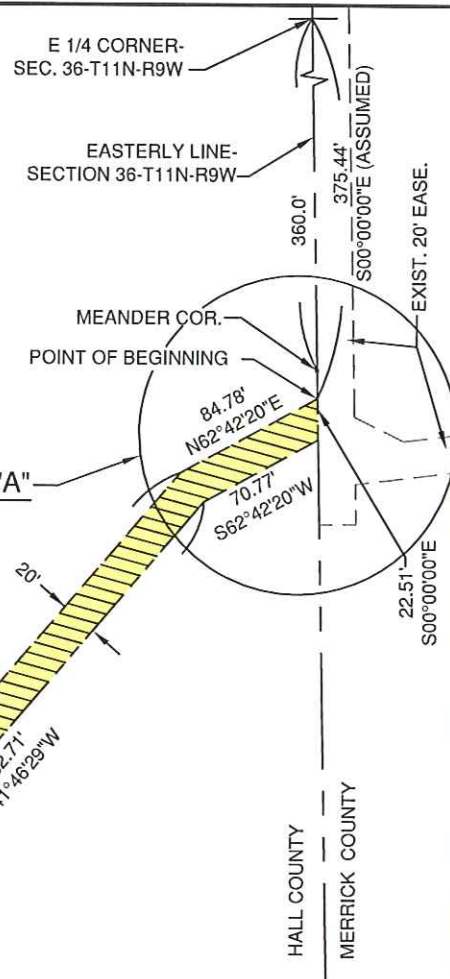
PART OF THE
E1/2, SE1/4
SECTION 36-T11N-R9W

RIVER LOT NO. 2



DETAIL "A"


SEE DETAIL "A"



EASTERLY R-O-W
LINE-US HIGHWAY 34

US HWY 34
(CHORD BEARING)
N2°33'09"W

LEGEND

 INDICATES 20' WIDE
UTILITY EASEMENT

CITY OF GRAND ISLAND	
UTILITIES DEPARTMENT	
EXHIBIT "A"	
DRN BY: K.J.M.	SCALE: 1"= 100'