



City of Grand Island

Tuesday, January 24, 2012

Council Session

Item F3

#9360 - Consideration of Vacation of a Utility Easement Located in Platte Valley Industrial Park Third Subdivision (4201 Gold Core Drive - Royce and Janice Carville)

Staff Contact: John Collins, Public Works Director

Council Agenda Memo

From: Terry Brown, Manager of Engineering Services

Meeting: January 24, 2012

Subject: Consideration of Vacation of a Utility Easement Located in Platte Valley Industrial Park Third Subdivision (4201 Gold Core Drive - Royce and Janice Carville)

Item #'s: F-3

Presenter(s): John Collins, Public Works Director

Background

A fifty-five (55) foot wide utility easement was filed with Hall County on March 26, 2001, as Instrument No. 200102429. There are no conflicts with utilities.

Discussion

The property owner of 4201 Gold Core Drive, in Platte Valley Industrial Park Third Subdivision, has requested that the fifty-five (55) foot wide utility easement be vacated to allow for future building expansion and detention pond for the FedEx property at this location.

Alternatives

It appears that the Council has the following alternatives concerning the issue at hand. The Council may:

1. Move to approve
2. Refer the issue to a Committee
3. Postpone the issue to future date
4. Take no action on the issue

Recommendation

City Administration recommends that the Council approve the passing of an ordinance vacating the utility easement in Platte Valley Industrial Park Third Subdivision.

Sample Motion

Move to approve the passing of an ordinance vacating the utility easement in Platte Valley Industrial Park Third Subdivision.

ORDINANCE NO. 9360

An ordinance to vacate an existing utility easement and to provide for filing this ordinance in the office of the Register of Deeds of Hall County, Nebraska; to repeal any ordinance or parts of ordinances in conflict herewith, and to provide for publication and the effective date of this ordinance.

BE IT ORDAINED BY THE MAYOR AND COUNCIL OF THE CITY OF GRAND ISLAND, NEBRASKA:

SECTION 1. That the existing utilities easement located in part of Lots 2 and 3, Platte Valley Industrial Park Third Subdivision, an addition in the City of Grand Island, located in the Northwest Quarter of Section 5, Township 10 North, Range 9 West of the 6th P.M., Hall County, Nebraska being more particularly described as follows:

BEGINNING AT THE SOUTHWEST CORNER OF LOT 2 OR THE NORTHWEST CORNER OF LOT 3, BOTH LOCATED IN PLATTE VALLEY INDUSTRIAL PARK THIRD SUBDIVISION, AN ADDITION IN THE CITY OF GRAND ISLAND LOCATED IN THE NORTHWEST QUARTER OF SECTION 5, TOWNSHIP 10 NORTH, RANGE 9 WEST OF THE 6TH P.M., HALL COUNTY, NEBRASKA, THENCE N00°00'03"E, ON THE WEST LINE OF SAID LOT 2 AND THE EAST RIGHT OF WAY OF GOLD CORE DRIVE, A DISTANCE OF 27.50 FEET, TO A POINT ON THE WEST LINE OF SAID LOT 2 AND THE EAST RIGHT OF WAY OF GOLD CORE DRIVE; THENCE S87°59'21"E, A DISTANCE OF 419.85 FEET, TO A POINT ON THE EAST LINE OF SAID LOT 2; THENCE S00°02'32"W, AND ON THE EAST LINE OF SAID LOT 2, A DISTANCE OF 27.50 FEET, TO THE SOUTHEAST CORNER OF SAID LOT 2 AND THE NORTHEAST CORNER OF SAID LOT

ORDINANCE NO. 9360 (Cont.)

3; THENCE CONTINUING ON THE LAST DESCRIBED COURSE, S00°02'32"W, AND ON THE EAST LINE OF SAID LOT 3, A DISTANCE OF 27.50 FEET, TO A POINT ON THE WEST LINE OF SAID LOT 3; THENCE N87°59'21"W, A DISTANCE OF 419.81 FEET TO A POINT ON THE WEST LINE OF SAID LOT 3 AND THE EAST RIGHT OF WAY OF SAID GOLD CORE DRIVE; THENCE N00°00'12"W, ON THE WEST LINE OF SAID LOT 3 AND THE EAST RIGHT OF WAY OF SAID GOLD CORE DRIVE, A DISTANCE OF 27.50 FEET TO THE POINT OF BEGINNING. SAID TRACT CONTAINS 23,077.15 SQUARE FEET OR 0.53 ACRES, SUBJECT TO EASEMENTS AND RESTRICTIONS OF RECORD.

is hereby vacated. Such easement to be vacated is shown and more particularly described on Exhibit A attached hereto.

SECTION 2. The title to the property vacated by Section 1 of this ordinance shall revert to the owner or owners of the real estate upon which the easement is located.

SECTION 3. This ordinance is directed to be filed, with the drawing, in the office of the Register of Deeds of Hall County, Nebraska.

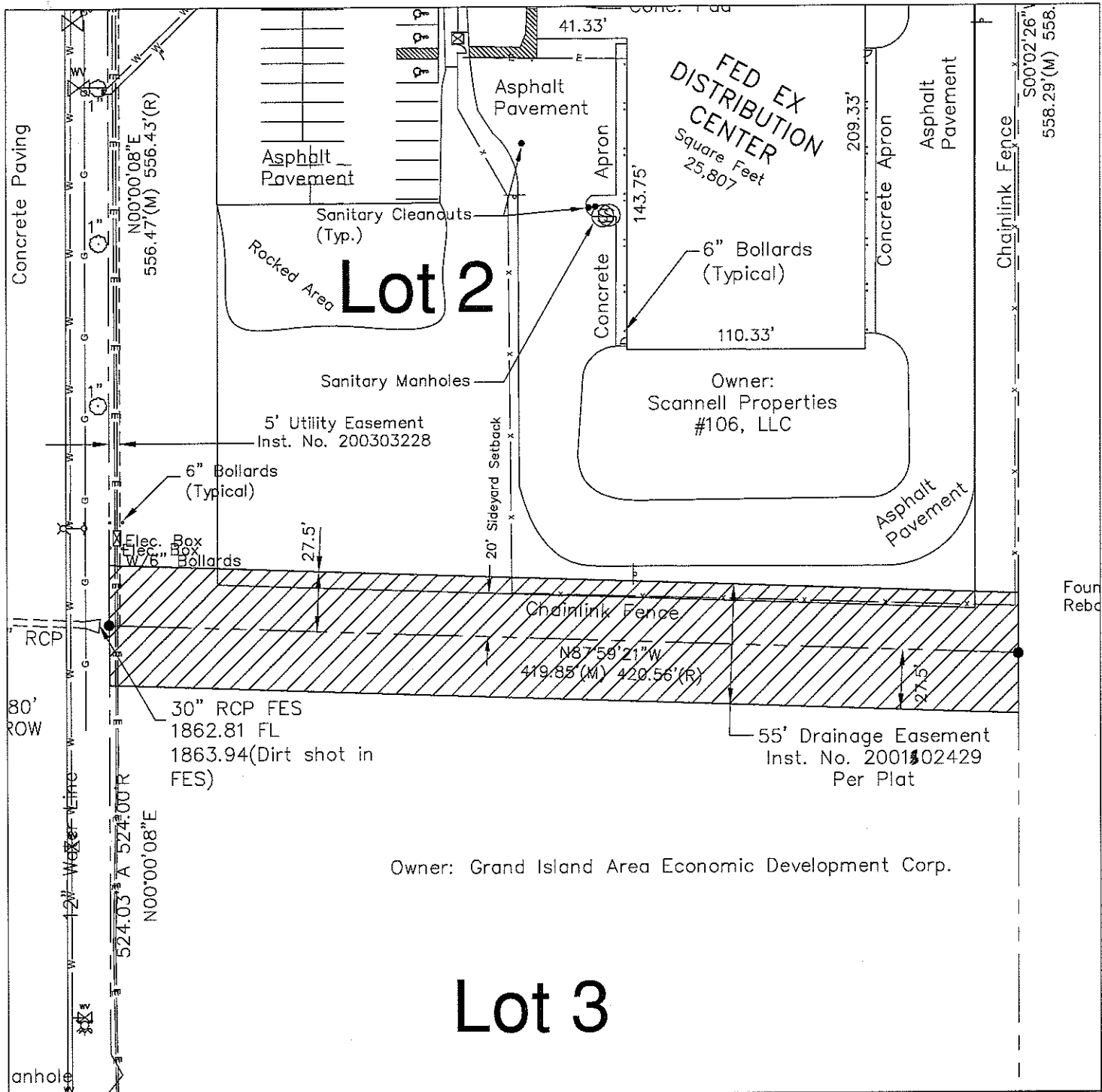
SECTION 3. This ordinance shall be in force and take effect from and after its passage and publication, within fifteen days in one issue of the Grand Island Independent as provided by law.

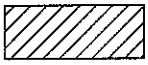
Enacted: January 24, 2012.

Jay Vavricek, Mayor

Attest:

RaNae Edwards, City Clerk



<p>REGA ENGINEERING 402-484-7342 OFFICE 402-484-7344 FAX</p>	<p>LEGEND</p>  - VACATED DRAINAGE EASEMENT	<p>REGA ENGINEERING GROUP, INC.</p>
<p>JOB NAME: VACATED DRAINAGE EASEMENT LOCATION: FED EX DISTRIBUTION CENTER</p> <p>DESCRIPTION: EXHIBIT</p>	<p>DRAWN BY: REGA SCALE: 1"=50' DATE: 12/08/2011 JOB NUMBER: 111143</p>	<p>CHECKED BY: REGA SHEET: 1</p>
<p>1620 S. 70TH ST., SUITE 103 LINCOLN, NEBRASKA 68516 (402).484.7342</p> <ul style="list-style-type: none"> ENGINEERING PLANNING 		