



# City of Grand Island

Tuesday, September 13, 2011

Council Session

## Item E3

**Public Hearing on Acquisition of Utility Easement - Southwest  
Corner of the Intersection of Belfry Blvd., & August Parkway -  
Indianhead Golf Club**

Staff Contact: Tim Luchsinger

# **Council Agenda Memo**

**From:** Robert H. Smith, Asst. Utilities Director

**Meeting:** September 13, 2011

**Subject:** Acquisition of Utility Easement – Southwest Corner of Intersection of Belfry Blvd. and Augusta Parkway – Indianhead Golf Club, Inc.

**Item #'s:** E-3 & G-5

**Presenter(s):** Timothy Luchsinger, Utilities Director

## **Background**

Nebraska State Law requires that acquisition of property must be approved by City Council. The Utilities Department needs to acquire an easement relative to the property of Indianhead Golf Club, Inc., located through a part of the Southwest Quarter of the Southwest Quarter (SW ¼, SW ¼) Section Twenty Six (26), Township Eleven (11) North, Range Ten (10) West of the 6<sup>th</sup> PM (the southwest corner of the intersection of Belfry Blvd. and Augusta Parkway), located in the City of Grand Island, Hall County, Nebraska, in order to have access to install, upgrade, maintain, and repair power appurtenances, including lines and transformers.

## **Discussion**

This easement will be used to locate a three phase pad mounted transformer and high voltage switch gear. They will serve the residential subdivision and the sewer lift station at the same location.

## **Alternatives**

It appears that the Council has the following alternatives concerning the issue at hand. The Council may:

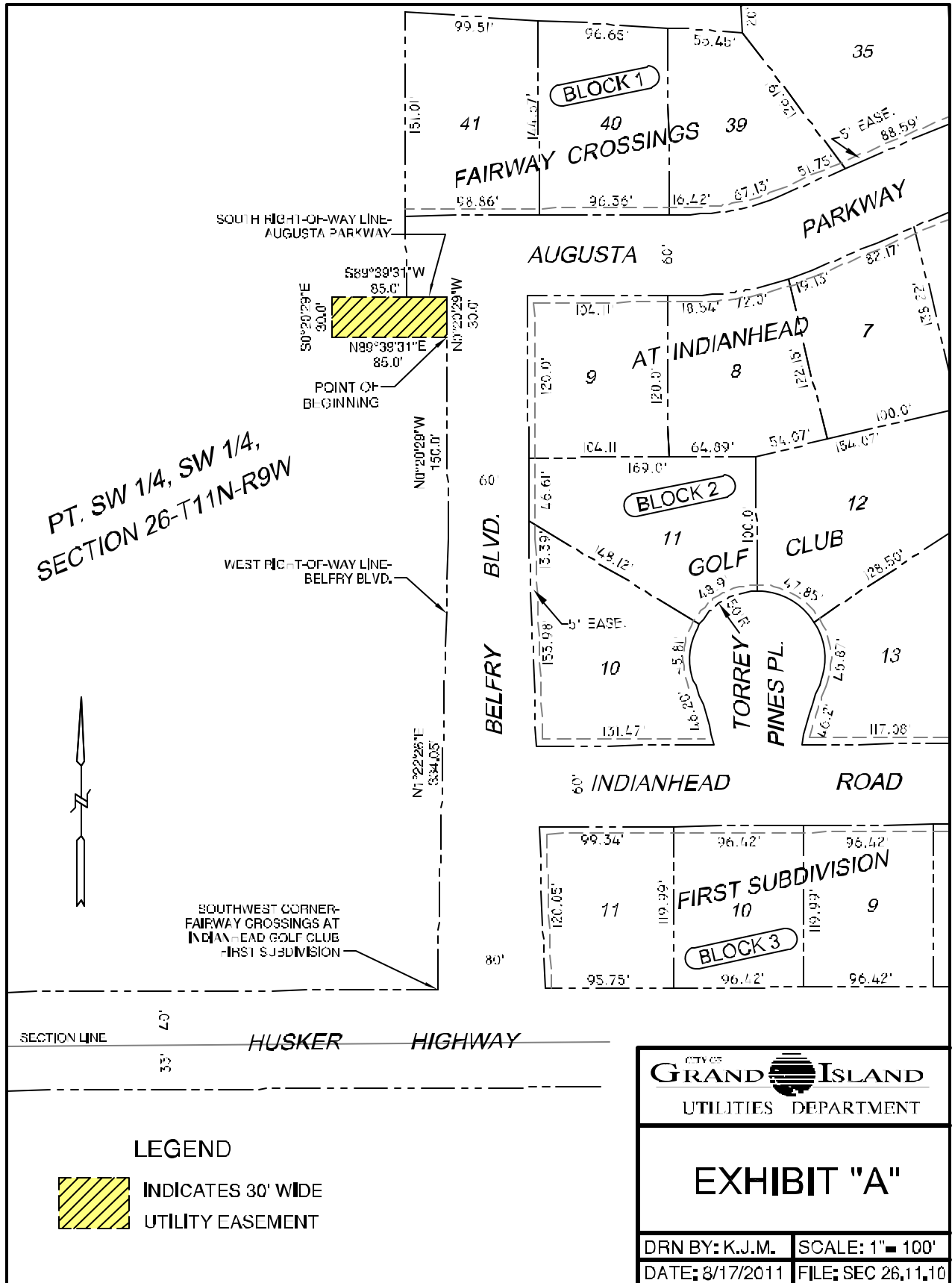
1. Make a motion to approve
2. Refer the issue to a Committee
3. Postpone the issue to future date
4. Take no action on the issue

## **Recommendation**

City Administration recommends that the Council approve the resolution for the acquisition of the easement for one dollar (\$1.00).

## **Sample Motion**

Move to approve acquisition of the Utility Easement.



PT. SW 1/4, SW 1/4,  
SECTION 26-T11N-R9W

**LEGEND**

- INDICATES 30' WIDE UTILITY EASEMENT

CITY OF  
**GRAND ISLAND**  
UTILITIES DEPARTMENT

**EXHIBIT "A"**

DRN BY: K.J.M.	SCALE: 1" = 100'
DATE: 8/17/2011	FILE: SEC 26,11,10