



City of Grand Island

Tuesday, August 09, 2011

Council Session

Item F6

**#9305 - Consideration of Creation of Water Main District 463 -
Brahma & Bantam Streets**

This item relates to the aforementioned Ordinance item F-1.

Staff Contact: Tim Luchsinger

•This Space Reserved for Register of Deeds •

ORDINANCE NO. 9305

An ordinance creating Water Main District No. 463 in the City of Grand Island, Hall County, Nebraska; defining the boundaries of the district; providing for the laying of water mains in said district; approving plans and specifications and securing bids; assessing the cost of such improvements; providing for certification to the Register of Deeds; and providing the effective date hereof.

BE IT ORDAINED BY THE MAYOR AND COUNCIL OF THE CITY OF GRAND ISLAND, NEBRASKA:

SECTION 1. Water Main District No. 463 in the City of Grand Island, Nebraska, is hereby created for the laying of eight (8.0) inch diameter water mains with its appurtenances along Brahma Street and Bantam Street in the City of Grand Island, Hall County, Nebraska.

SECTION 2. The boundaries of such water main district shall be more particularly described as follows:

Beginning at the northwest corner of Lot Twenty Four (24) Block Three (3) Second

Approved as to Form	?	_____
August 2, 2011_	?	City Attorney

ORDINANCE NO. 9305 (Cont.)

Addition to Holcomb's Highway Homes Subdivision in the City of Grand Island, Hall County, Nebraska; thence easterly along the northerly line of Lot Twenty Four (24) Block Three (3) said Second Addition to Holcomb's Highway Homes Subdivision, a distance of one hundred thirty two and three tenths (132.3) feet, to the northeast corner of Lot Twenty Four (24) Block Three (3) said Second Addition to Holcomb's Highway Homes Subdivision, said point also being on the westerly right-of-way line of Brahma Street; thence northerly along the westerly right-of-way line of said Brahma Street, a distance of one hundred three (103.0) feet, to a point on the southerly right-of-way line of Holcomb Street; thence easterly along the southerly right-of-way line of said Holcomb Street, a distance of sixty (60.0) feet, to a point on the easterly right-of-way line of said Brahma Street; thence southerly along the easterly right-of-way line of said Brahma Street, a distance of one hundred one and three tenths (101.3) feet, to the northwest corner of Lot Six (6) Block Two (2) said Second Addition to Holcomb's Highway Homes Subdivision; thence easterly along the northerly line of Lot Six (6) Block Two (2) said Second Addition to Holcomb's Highway Homes Subdivision, a distance of eighty eight and seven tenths (88.7) feet, to a particular corner of said Lot Six (6) Block Two (2) said Second Addition to Holcomb's Highway Homes Subdivision; thence southeasterly along the northerly line of Lot Six (6), Lot Seven (7), and Lot Eight (8) all of Block Two (2) said Second Addition to Holcomb's Highway Homes Subdivision, a distance of two hundred fourteen and four tenths (214.4) feet, to a point on the westerly line of Lot "C", Replat of Lots Nine (9) through Thirteen (13) Block Two (2) Second Addition to Holcomb's Highway Homes Subdivision; thence northerly along the westerly line of Lot "C" said Replat of Lots Nine (9) through Thirteen (13) Block Two (2) Second Addition to Holcomb's Highway Homes Subdivision, a distance of forty one and five tenths (41.5) feet, to the northwest corner of Lot "C" said Replat of Lots Nine (9) through Thirteen (13) Block Two (2) Second Addition to Holcomb's Highway Homes Subdivision; thence easterly along the northerly line of Lot "C" said Replat of Lots Nine (9) through Thirteen (13) Block Two (2) Second Addition to Holcomb's Highway Homes Subdivision, a distance of one hundred seven and two tenths (107.2) feet, to the northeast corner of Lot "C" said Replat of Lots Nine (9) through Thirteen (13) Block Two (2) Second Addition to Holcomb's Highway Homes Subdivision, said point also being on the westerly right-of-way line of Bantam Street; thence northerly along the westerly right-of-way line of said Bantam Street, a distance of one hundred (100.0) feet, to a point on the southerly right-of-way line of said Holcomb Street; thence easterly along the southerly right-of-way line of said Holcomb Street, a distance of fifty (50.0) feet, to a point on the easterly right-of-way line of said Bantam Street; thence southerly along the easterly right-of-way line of said Bantam Street, a distance of one hundred (100.0) feet, to the northwest corner of Lot Four (4) Block One (1) said Second Addition to Holcomb's Highway Homes Subdivision; thence easterly along the northerly line of Lot Four (4) Block One (1) said Second Addition to Holcomb's Highway Homes Subdivision, a distance of one hundred seventeen (117.0) feet, to the northeast corner of Lot Four (4) Block One (1) said Second Addition to Holcomb's

ORDINANCE NO. 9305 (Cont.)

Highway Homes Subdivision; thence southerly along the easterly line of Lot Four (4), Lot Five (5), Lot Six (6), Lot Seven (7), Lot Eight (8), and Lot Nine (9) all of Block One (1) said Second Addition to Holcomb's Highway Homes Subdivision, a distance of four hundred thirty and eight tenths (430.8) feet, to the southeast corner of Lot Nine (9) Block One (1) said Second Addition to Holcomb's Highway Homes Subdivision; thence westerly along the southerly line of Lot Nine (9) Block One (1) said Second Addition to Holcomb's Highway Homes Subdivision, a distance of one hundred fifteen (115.0) feet, to the southwest corner of Lot Nine (9) Block One (1) said Second Addition to Holcomb's Highway Homes Subdivision, said point also being on the easterly right-of-way line of said Brahma Street; thence southerly along the easterly right-of-way line of said Brahma Street, a distance of ninety one and five tenths (91.5) feet, to a point on the northerly right-of-way line of Wyandotte Street; thence westerly along the northerly line of said Wyandotte Street, a distance of sixty (60.0) feet, to a point on the westerly right-of-way line of said Brahma Street; thence northerly along the westerly right-of-way line of said Brahma Street, a distance of one hundred thirty two and two tenths (132.2) feet, to the southeast corner of Lot Seventeen (17) Block Three (3) said Second Addition to Holcomb's Highway Homes Subdivision; thence southwesterly along a southerly line of Lot Seventeen (17) Block Three (3) said Second Addition to Holcomb's Highway Homes Subdivision, a distance of one hundred fifty (150.0) feet to the southwest corner of Lot Seventeen (17) Block Three (3) said Second Addition to Holcomb's Highway Homes Subdivision; thence northerly along the westerly line of Lot Seventeen (17) Block Three (3) said Second Addition to Holcomb's Highway Homes Subdivision, a distance of one hundred and six tenths (100.6) feet, to the southwest corner of Lot Eighteen (18) Block Three (3) said Second Addition to Holcomb's Highway Homes Subdivision; thence northwesterly along the westerly line of Lot Eighteen (18) and Lot Nineteen (19) both of Block Three (3) said Second Addition to Holcomb's Highway Homes Subdivision, a distance of one hundred thirty five and four tenths (135.4) feet, to the southwest corner of Lot Twenty (20) Block Three (3) said Second Addition to Holcomb's Highway Homes Subdivision; thence northwesterly along the westerly line of Lot Twenty (20), Lot Twenty One (21), and Lot Twenty Two (22) all of Block Three (3) said Second Addition to Holcomb's Highway Homes Subdivision, a distance of two hundred forty six and five tenths (246.5) feet, to the southwest corner of Lot Twenty Three (23) Block Three (3) said Second Addition to Holcomb's Highway Homes Subdivision; thence northwesterly along the westerly line of Lot Twenty Three (23) Block Three (3) said Second Addition to Holcomb's Highway Homes Subdivision, a distance of one hundred five and nine tenths (105.9) feet, to the southwest corner of Lot Twenty Four (24) Block Three (3) said Second Addition to Holcomb's Highway Homes Subdivision; thence northerly along the westerly line of Lot Twenty Four (24) Block Three (3) said Second Addition to Holcomb's Highway Homes Subdivision, a distance of eighty five (85.0) feet, to the northwest corner of said Lot Twenty Four (24) Block Three (3) said Second Addition to Holcomb's Highway Subdivision being the said Point of Beginning.

ORDINANCE NO. 9305 (Cont.)

SECTION 3. Said improvement shall be made in accordance with plans and specifications approved by the Engineer for the City, who shall estimate the cost thereof. Bids for the construction of said water main shall be taken and contracts entered into in the manner provided by law.

SECTION 4. All improvements shall be made at public cost, but the cost thereof shall be assessed upon the lots and lands in the district specifically benefited thereby as provided by law.

SECTION 5. This ordinance shall be in force and take effect from and after its passage, approval, and publication, without the plat, within fifteen days in one issue of the Grand Island Independent.

SECTION 6. This ordinance, with the plat, is hereby directed to be filed in the office of the Register of Deeds of Hall County, Nebraska.

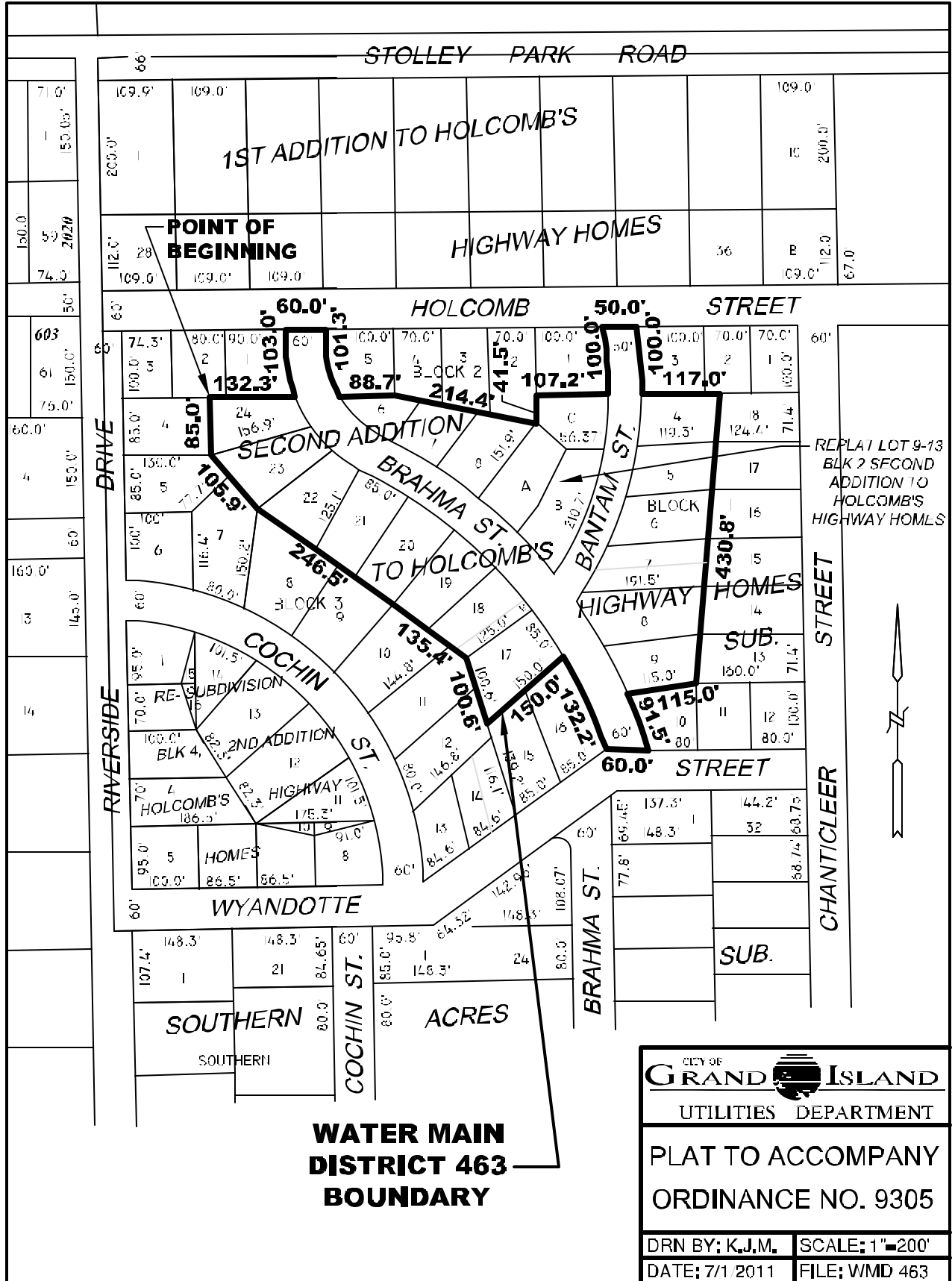
SECTION 7. After passage, approval and publication of this ordinance, notice of the creation of said district shall be published in the Grand Island Independent, without the plat, as provided by law.

Enacted August 9, 2011.

Jay Vavricek, Mayor

Attest:

RaNae Edwards, City Clerk



**WATER MAIN
DISTRICT 463
BOUNDARY**

CITY OF GRAND ISLAND UTILITIES DEPARTMENT	
PLAT TO ACCOMPANY ORDINANCE NO. 9305	
DRN BY: K.J.M.	SCALE: 1"=200'
DATE: 7/1 2011	FILE: WMD 463