



City of Grand Island

Tuesday, August 09, 2011

Council Session

Item F5

**#9304 - Consideration of Creation of Water Main Distinct 462 -
Cochin Street**

This item relates to the aforementioned Ordinance item F-1.

Staff Contact: Tim Luchsinger

•This Space Reserved for Register of Deeds •

ORDINANCE NO. 9304

An ordinance creating Water Main District No. 462 in the City of Grand Island, Hall County, Nebraska; defining the boundaries of the district; providing for the laying of water mains in said district; approving plans and specifications and securing bids; assessing the cost of such improvements; providing for certification to the Register of Deeds; and providing the effective date hereof.

BE IT ORDAINED BY THE MAYOR AND COUNCIL OF THE CITY OF GRAND ISLAND, NEBRASKA:

SECTION 1. Water Main District No. 462 in the City of Grand Island, Nebraska, is hereby created for the laying of eight (8.0) inch diameter water mains with its appurtenances along Cochin Street in the City of Grand Island, Hall County, Nebraska.

SECTION 2. The boundaries of such water main district shall be more particularly described as follows:

Beginning at the northeast corner of Lot Nine (9) Re-subdivision of Block Four (4) Second Addition to Holcomb's Highway Homes Subdivision in the City of Grand Island, Hall

Approved as to Form	?	_____
August 2, 2011_	?	City Attorney

ORDINANCE NO. 9304 (Cont.)

County, Nebraska; thence southwesterly along the southerly line of Lot Nine (9) said Re-subdivision of Block Four (4) Second Addition to Holcomb's Highway Homes Subdivision, a distance of ninety one (91.0) feet, to the southwest corner of Lot Nine (9) said Re-subdivision of Block Four (4) Second Addition to Holcomb's Highway Homes Subdivision; thence northerly along the westerly line of Lot Nine (9) said Re-subdivision of Block Four (4) Second Addition to Holcomb's Highway Homes Subdivision, a distance of twenty (20.0) feet; thence northwesterly, a distance of forty seven and five tenths (47.5) feet, to a point on the southerly line of Lot Twelve (12) said Re-subdivision of Block Four (4) Second Addition to Holcomb's Highway Homes Subdivision; thence southwesterly along the southerly line of Lot Twelve (12) said Re-subdivision of Block Four (4) Second Addition to Holcomb's Highway Homes Subdivision, a distance of seventy one and five tenths (71.5) feet, to the southwest corner of Lot Twelve (12) said Re-subdivision of Block Four (4) Second Addition to Holcomb's Highway Homes Subdivision; thence northwesterly along the westerly line of Lot Twelve (12) and Lot Thirteen (13) said Re-subdivision of Block Four (4) Second Addition to Holcomb's Highway Homes Subdivision, a distance of one hundred sixty four and six tenths (164.6) feet, to the northwest corner of Lot Thirteen (13) said Re-subdivision of Block Four (4) Second Addition to Holcomb's Highway Homes Subdivision; thence northeasterly, a distance of forty four and seventy eight hundredths (44.78) feet, to a point which is twenty (20.0) feet northwesterly at right angles to the southeasterly line of said Lot Fourteen (14) and ninety five (95.0) feet southwesterly from the intersection of said lot line with the southwesterly line of Cochin Street; thence northeasterly parallel with the southerly line of Lot Fourteen (14) said Re-subdivision of Block Four (4) Second Addition to Holcomb's Highway Homes Subdivision, a distance of ninety five (95.0) feet, to a point on the southerly right-of-way line of Cochin Street; thence northwesterly along the southerly right-of-way line of said Cochin Street, a distance of one hundred eighty one and five tenths (181.5) feet, to a point on the easterly right-of-way line of Riverside Drive; thence northerly along the easterly right-of-way line of Riverside Drive, a distance of sixty (60.0) feet; thence easterly along the northerly right-of-way line of said Cochin Street, a distance of one hundred (100.0) feet, to the southwest corner of Lot Seven (7) Block Three (3) Second Addition to Holcomb's Highway Homes Subdivision; thence northerly along the westerly line of Lot Seven (7) Block Three (3) said Second Addition to Holcomb's Highway Homes Subdivision, a distance of one hundred sixteen and four tenths (116.4) feet, to a particular northwest corner of Lot Seven (7) Block Three (3) said Second Addition to Holcomb's Highway Homes Subdivision; thence northeasterly along a northerly line of Lot Seven (7) Block Three (3) said Second Addition to Holcomb's Highway Homes Subdivision, a distance of seventy seven and seven tenths (77.7) feet, to a corner of said Lot Seven (7) Block Three said Second Addition to Holcomb's Highway Homes Subdivision; thence southeasterly along a northerly line of Lot Seven (7) Block Three (3) said Second Addition to Holcomb's Highway Homes Subdivision, a distance of sixty five (65.0) feet, to the northeast corner of Lot Eight (8) Block Three (3) said Second Addition to Holcomb's

ORDINANCE NO. 9304 (Cont.)

Highway Homes Subdivision; thence southeasterly along the northerly line of Lot Eight (8) and Lot Nine (9) both of Block Three (3) said Second Addition to Holcomb's Highway Homes Subdivision, a distance of two hundred forty six and five tenths (246.5) feet, to the northwest corner of Lot Ten (10) Block Three (3) said Second Addition to Holcomb's Highway Homes Subdivision; thence southeasterly along the northerly line of Lot Ten (10) and Lot Eleven (11) both of Block Three (3) said Second Addition to Holcomb's Highway Homes Subdivision, a distance of one hundred thirty five and four tenths (135.4) feet; thence southerly along the easterly line of Lot Eleven(11) and Lot Twelve (12) both of Block Three (3) said Second Addition to Holcomb's Highway Homes Subdivision, a distance of one hundred twenty two and seven tenths (122.7) feet, to the southeast corner of Lot Twelve (12) Block Three (3) said Second Addition to Holcomb's Highway Homes Subdivision; thence southwesterly along the southerly line of Lot Twelve (12) Block Three (3) said Second Addition to Holcomb's Highway Homes Subdivision, a distance of one hundred forty six and eight tenths (146.8) feet, to the southwest corner of Lot Twelve (12) Block Three (3) said Second Addition to Holcomb's Highway Homes Subdivision said point being on the easterly right-of-way line of said Cochin Street; thence southerly along the easterly right-of-way line of said Cochin Street, a distance of one hundred sixteen and one tenth (116.1) feet, to a point on the northerly right-of-way line of Wyandotte Street; thence westerly along the northerly right-of-way line of said Wyandotte Street, a distance of sixty (60.0) feet, to a point on the westerly right-of-way line of said Cochin Street; thence northerly along the westerly right-of-way line of said Cochin Street, a distance of ninety five (95.0) feet, to the northeast corner of said Lot Nine (9) Block Three (3) said Second Addition to Holcomb's Highway Homes Subdivision being the said Point of Beginning.

SECTION 3. Said improvement shall be made in accordance with plans and specifications approved by the Engineer for the City, who shall estimate the cost thereof. Bids for the construction of said water main shall be taken and contracts entered into in the manner provided by law.

SECTION 4. All improvements shall be made at public cost, but the cost thereof shall be assessed upon the lots and lands in the district specifically benefited thereby as provided by law.

SECTION 5. This ordinance shall be in force and take effect from and after its passage, approval, and publication, without the plat, within fifteen days in one issue of the Grand Island Independent.

SECTION 6. This ordinance, with the plat, is hereby directed to be filed in the office of the

ORDINANCE NO. 9304 (Cont.)

Register of Deeds of Hall County, Nebraska.

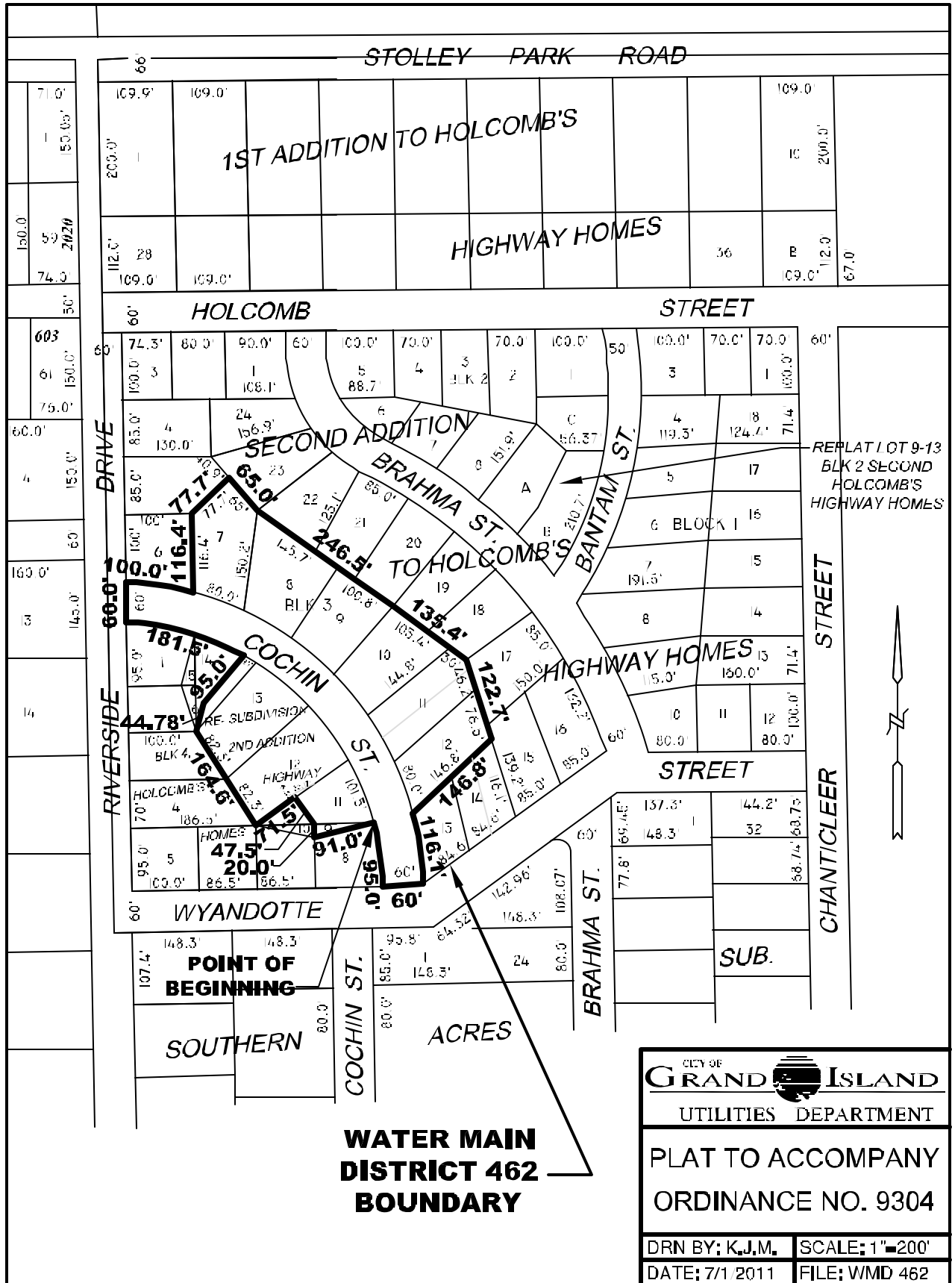
SECTION 7. After passage, approval and publication of this ordinance, notice of the creation of said district shall be published in the Grand Island Independent, without the plat, as provided by law.

Enacted August 9, 2011.

Jay Vavricek, Mayor

Attest:

RaNae Edwards, City Clerk



**WATER MAIN
DISTRICT 462
BOUNDARY**

CITY OF GRAND ISLAND UTILITIES DEPARTMENT	
PLAT TO ACCOMPANY ORDINANCE NO. 9304	
DRN BY: K.J.M.	SCALE: 1"=200'
DATE: 7/1 2011	FILE: WMD 462