



City of Grand Island

Tuesday, August 09, 2011

Council Session

Item E6

Public Hearing on Acquisition of Public Utility Easement Located in the Northwest Quarter of the Northwest Quarter of Section 24, Township 11, Range 10 (Little B's Corporation)

Staff Contact: John Collins, Public Works Director

Council Agenda Memo

From: Scott Griepenstroh, Public Works Project Manager

Meeting: August 9, 2011

Subject: Public Hearing on Acquisition of Public Utility Easement
Located in the Northwest Quarter of the Northwest
Quarter of Section 24, Township 11, Range 10 (Little B's
Corporation)

Item #'s: E-6 & G-18

Presenter(s): John Collins, Public Works Director

Background

Nebraska State Statutes stipulate that the acquisition of property requires a public hearing to be conducted with the acquisition approved by the City Council. A public utility easement is needed at the southeast corner of Old Potash Highway and North Road to accommodate public utilities. The easement will allow for the construction, operation, maintenance, extension, repair, replacement, and removal of public utilities within the easement.

Discussion

This new easement will be 60' x 130' in the southwest corner of the Old Potash Highway and North Road intersection. At tonight's meeting we are also requesting approval to acquire a temporary easement directly south of this permanent to assist in the construction of the Moores Creek Drain Extension Project No. 2008-D-2.

Alternatives

It appears that the Council has the following alternatives concerning the issue at hand. The Council may:

1. Move to approve
2. Refer the issue to a Committee
3. Postpone the issue to future date

4. Take no action on the issue

Recommendation

City Administration recommends that the Council conduct a Public Hearing and approve acquisition of the Easement.

Sample Motion

Move to approve the acquisition of the Easement.

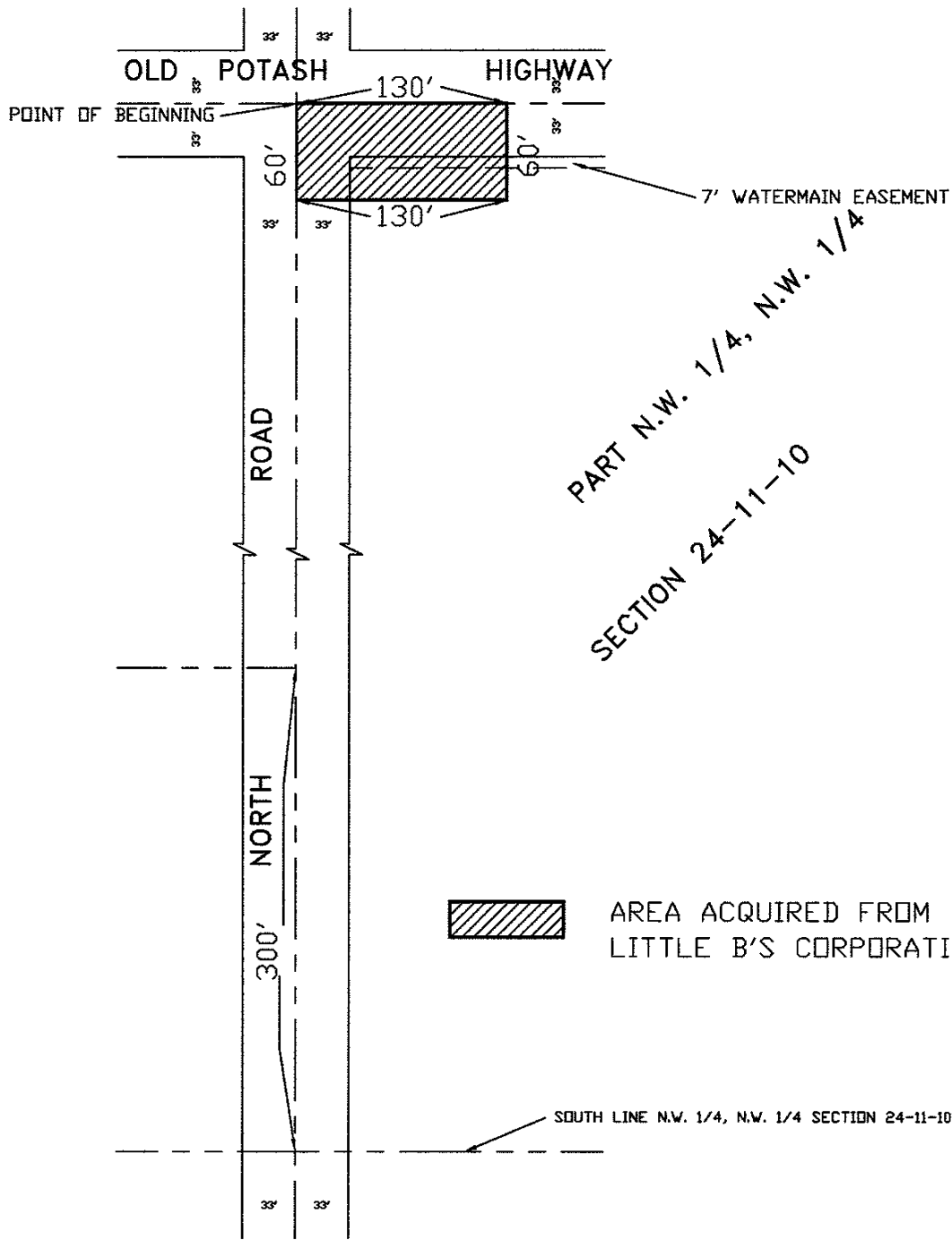


EXHIBIT "A"

CITY OF GRAND ISLAND
PUBLIC WORKS DEPARTMENT

DATE: 3/10/08
DRN BY: L.D.C.
SCALE: 1" = 100'

PLAT TO ACCOMPANY
DEED