



City of Grand Island

Tuesday, August 09, 2011

Council Session

Item E3

Public Hearing on Acquisition of Utility Easement - Stolley Park Rd. & Burlington Northern/Santa Fe Railroad, Merrick County, NE - Kruse

Staff Contact: Tim Luchsinger

Council Agenda Memo

From: Robert H. Smith, Asst. Utilities Director

Meeting: August 9, 2011

Subject: Acquisition of Utility Easement – Stolley Park Road and Burlington Northern/Santa Fe Railroad, Merrick County, NE - Rudolph Kruse, Sr.

Item #'s: E-3 & G-8

Presenter(s): Timothy Luchsinger, Utilities Director

Background

Nebraska State Law requires that acquisition of property must be approved by City Council. The Utilities Department needs to acquire an easement relative to the property of Rudolph Kruse, Sr., located at Stolley Park Road and the Burlington Northern/Santa Fe (BNSF) Railroad, Merrick County, Nebraska, in order to have access to install, upgrade, maintain, and repair power appurtenances, including lines and transformers.

Discussion

The BNSF Railroad is expanding its property and tracks through Grand Island. The Utilities Department will be required to relocate the overhead and underground facilities at various locations throughout the City. This easement will give the Utilities Department a place to construct the new electrical lines to continue to provide service to our customers at Stolley Park Road.

Alternatives

It appears that the Council has the following alternatives concerning the issue at hand. The Council may:

1. Make a motion to approve
2. Refer the issue to a Committee
3. Postpone the issue to future date
4. Take no action on the issue

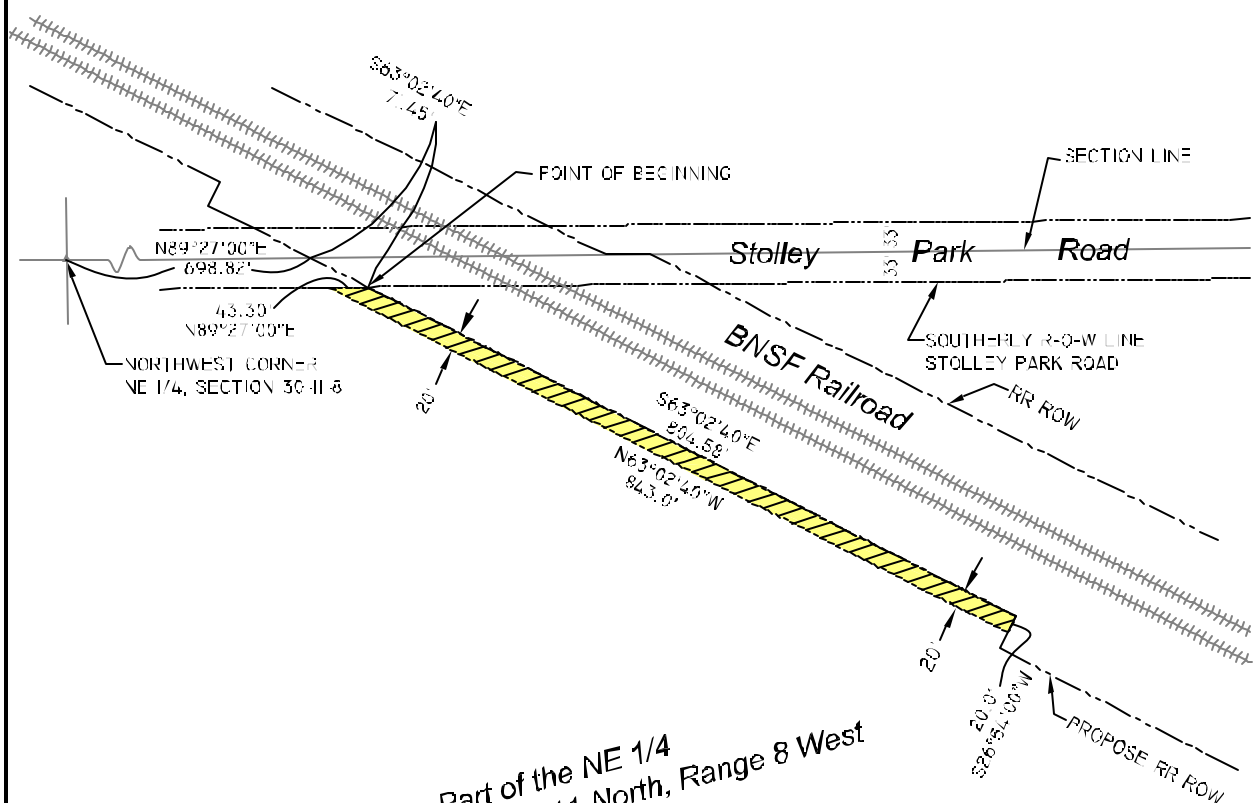
Recommendation

City Administration recommends that the Council approve the resolution for the acquisition of the easement for one dollar (\$1.00).

Sample Motion

Move to approve acquisition of the Utility Easement.

Section 19, Township 11 North, Range 8 West



Part of the NE 1/4
Section 30, Township 11 North, Range 8 West



LEGEND

 INDICATES 20' WIDE UTILITY EASEMENT

 CITY OF GRAND ISLAND UTILITIES DEPARTMENT	
EXHIBIT "A"	
DRN BY: P.F.G.	SCALE: 1" = 200'
DATE: 7/15/2011	FILE: BNSF RR