



City of Grand Island

Tuesday, June 28, 2011

Council Session

Item E7

**Public Hearing Concerning Acquisition of Utility Easement -
North of Wildwood Drive, East of the St. Joseph Branch UPRR
track - Blattner**

Staff Contact: Tim Luchsinger

Council Agenda Memo

From: Timothy Luchsinger, Utilities Director
John Collins, Public Works Director
Jason Eley, Assistant City Attorney/Purchasing

Meeting: June 28, 2011

Subject: Acquisition of Utility Easement – North of Wildwood Drive and East of the St. Joseph Branch UPRR Track – Evelyn Blattner

Item #'s: E-7 & G-6

Presenter(s): Timothy Luchsinger, Utilities Director

Background

Nebraska State Law requires that acquisition of property must be approved by City Council. The Utilities Department needs to acquire an easement relative to the property of Evelyn Blattner, located just north of Wildwood Drive, and east of the St. Joseph Branch UPRR Track, in the City of Grand Island, Hall County, in order to have access to install, upgrade, maintain, and repair water and sewer lines.

Discussion

This easement will be used to provide a location for water and sewer lines to the proposed Platte Valley Industrial Park East. The cost of the easement will be split equally between Water and Sewer Departments. This project was approved by City Council Resolution 2010-292, on October 26, 2010.

Alternatives

It appears that the Council has the following alternatives concerning the issue at hand. The Council may:

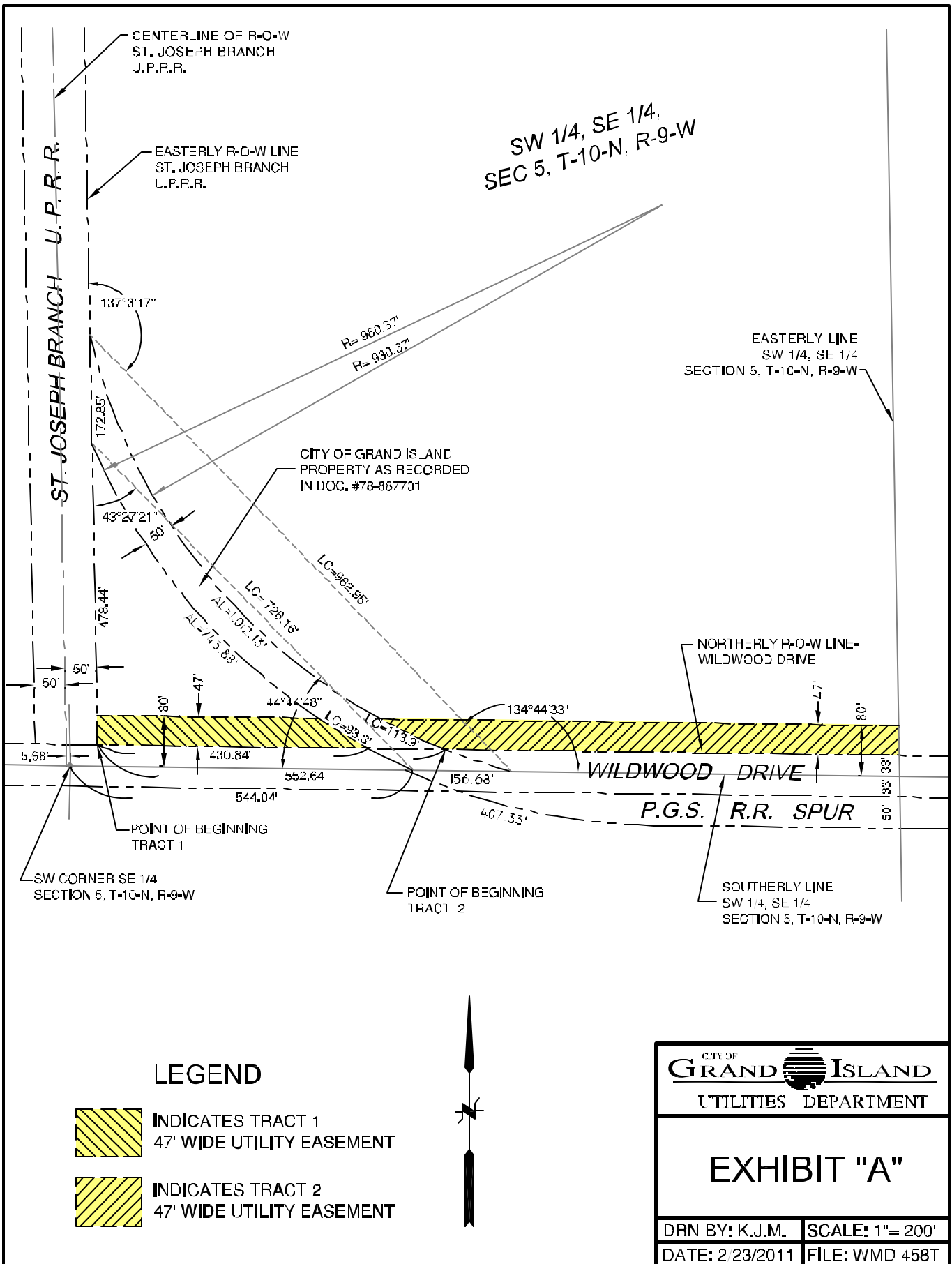
1. Make a motion to approve
2. Refer the issue to a Committee
3. Postpone the issue to future date
4. Take no action on the issue

Recommendation


City Administration recommends that the Council approve the resolution for the acquisition of the easement for Eight Thousand One Hundred Twenty-five Dollars (\$8,125.00).

Sample Motion

Move to approve acquisition of the Utility Easement.



LEGEND

- 
 INDICATES TRACT 1
 47' WIDE UTILITY EASEMENT
- 
 INDICATES TRACT 2
 47' WIDE UTILITY EASEMENT



CITY OF GRAND ISLAND UTILITIES DEPARTMENT	
EXHIBIT "A"	
DRN BY: K.J.M.	SCALE: 1"= 200'
DATE: 2/23/2011	FILE: WMD 458T