



# City of Grand Island

Tuesday, June 28, 2011

Council Session

## Item E5

**Public Hearing Concerning Acquisition of Utility Easement - West of Blaine Street, South of Schimmer Drive - GI Economic Development Corp (Wildwood Trust)**

Staff Contact: Tim Luchsinger

# Council Agenda Memo

**From:** Timothy Luchsinger, Utilities Director  
John Collins, Public Works Director  
Jason Eley, Assistant City Attorney/Purchasing

**Meeting:** June 28, 2011

**Subject:** Acquisition of Utility Easement – West of Blaine Street,  
and South of Schimmer Drive to River Industrial Lead  
Railroad R-O-W – Grand Island Area Economic  
Development Corp. – Wildwood Trust

**Item #'s:** E-5 & G-4

**Presenter(s):** Timothy Luchsinger, Utilities Director

## Background

Nebraska State Law requires that acquisition of property must be approved by City Council. The Utilities Department needs to acquire an easement relative to the property of Platte Valley State Bank and Trust Company, as Trustee of the Wildwood Trust, located just west of Blaine Street, and south of Schimmer Drive to River Industrial Lead Railroad right-of-way, in the City of Grand Island, Hall County, in order to have access to install, upgrade, maintain, and repair power appurtenances, including lines and transformers.

## Discussion

This easement will be used to provide a location for water and sewer lines to the proposed Platte Valley Industrial Park East. The cost of the easement will be split equally between Water and Sewer Departments. This project was approved by City Council Resolution 2010-292, on October 26, 2010.

## Alternatives

It appears that the Council has the following alternatives concerning the issue at hand. The Council may:

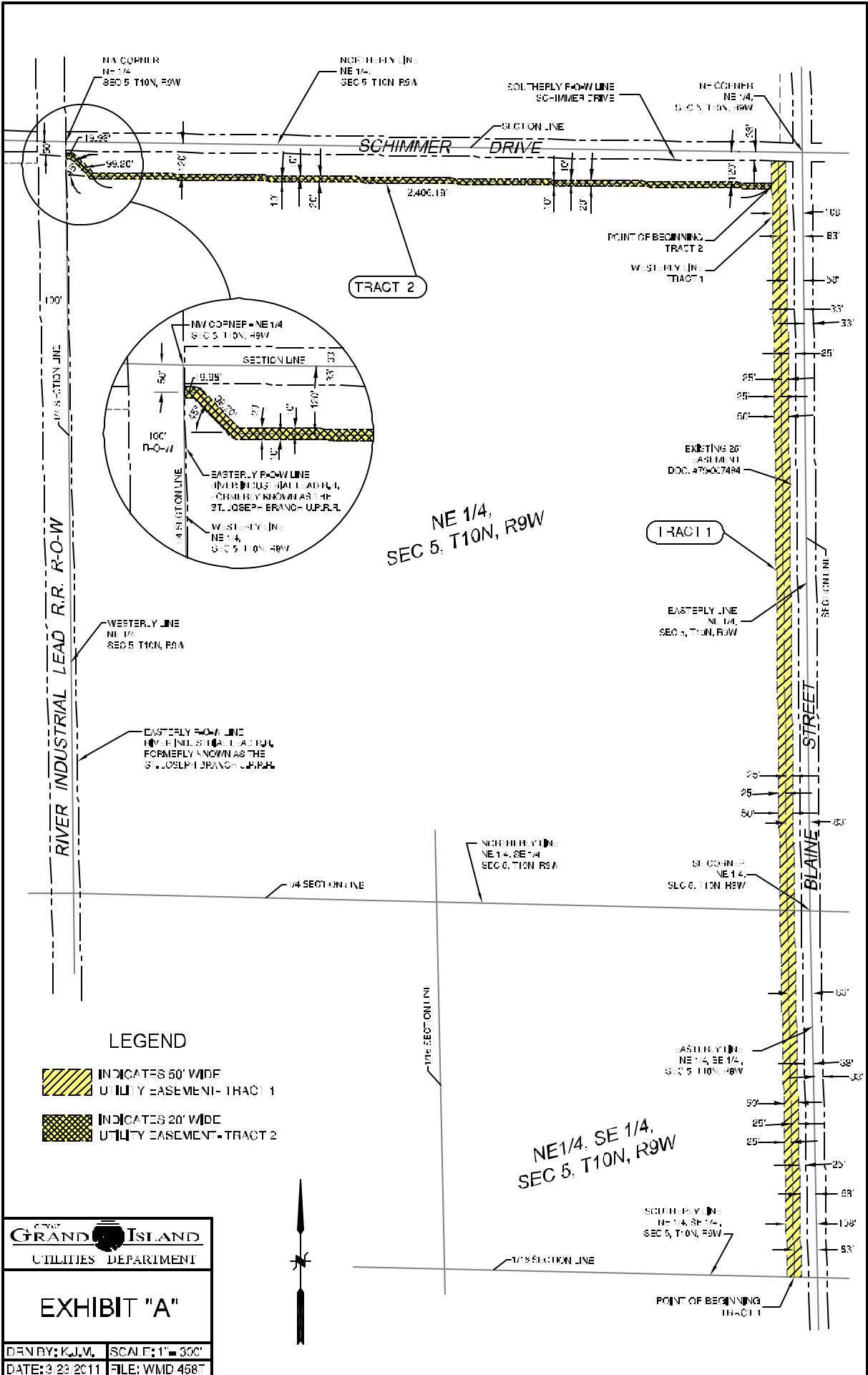
1. Make a motion to approve
2. Refer the issue to a Committee
3. Postpone the issue to future date
4. Take no action on the issue

## **Recommendation**



City Administration recommends that the Council approve the resolution for the acquisition of the easement for Thirty-six Thousand Nine Hundred Eighty-five Dollars (\$36,985.00).

## **Sample Motion**

Move to approve acquisition of the Utility Easement.



**LEGEND**

-  INDICATES 50' WIDE UTILITY EASEMENT - TRACT 1
-  INDICATES 20' WIDE UTILITY EASEMENT - TRACT 2

 <b>CITY OF GRAND ISLAND</b> UTILITIES DEPARTMENT	
EXHIBIT "A"	
DRAWN BY: K.J.M.	SCALE: 1" = 300'
DATE: 3/23/2011	FILE: WMD 458T

