



City of Grand Island

Tuesday, June 14, 2011

Council Session

Item G6

**#2011-131 - Approving Final Plat and Subdivision Agreement for
Platte Valley Industrial Park 7th Subdivision**

Staff Contact: Chad Nabity

Council Agenda Memo

From: Regional Planning Commission
Meeting: June 14, 2011
Subject: Platte Valley Industrial Park 7th Subdivision – Final Plat
Item #'s: G-6
Presenter(s): Chad Nabity AICP, Regional Planning Director

Background

This property is located north of Wildwood Drive and east of Juergen Rd. This final plat proposes to create 2 lots on a tract of land comprising all of Lot Eleven (11), Platte Valley Industrial Park Third Subdivision, in the City of Grand Island, in Hall County, Nebraska, said tract containing 6.873 acres.

Discussion

The revised final plat for Platte Valley Industrial Park 7th Subdivision was considered by the Regional Planning Commission at the June 1, 2011 meeting. A motion was made by Ruge and seconded by Hayes to approve the plat as presented. A roll call vote was taken and the motion passed with 9 members present (O'Neill, Ruge, Hayes, Reynolds, Haskins, Eriksen, Bredthauer, Connelly, Snodgrass) voting in favor no member present abstaining.

Alternatives

It appears that the Council has the following alternatives concerning the issue at hand. The Council may:

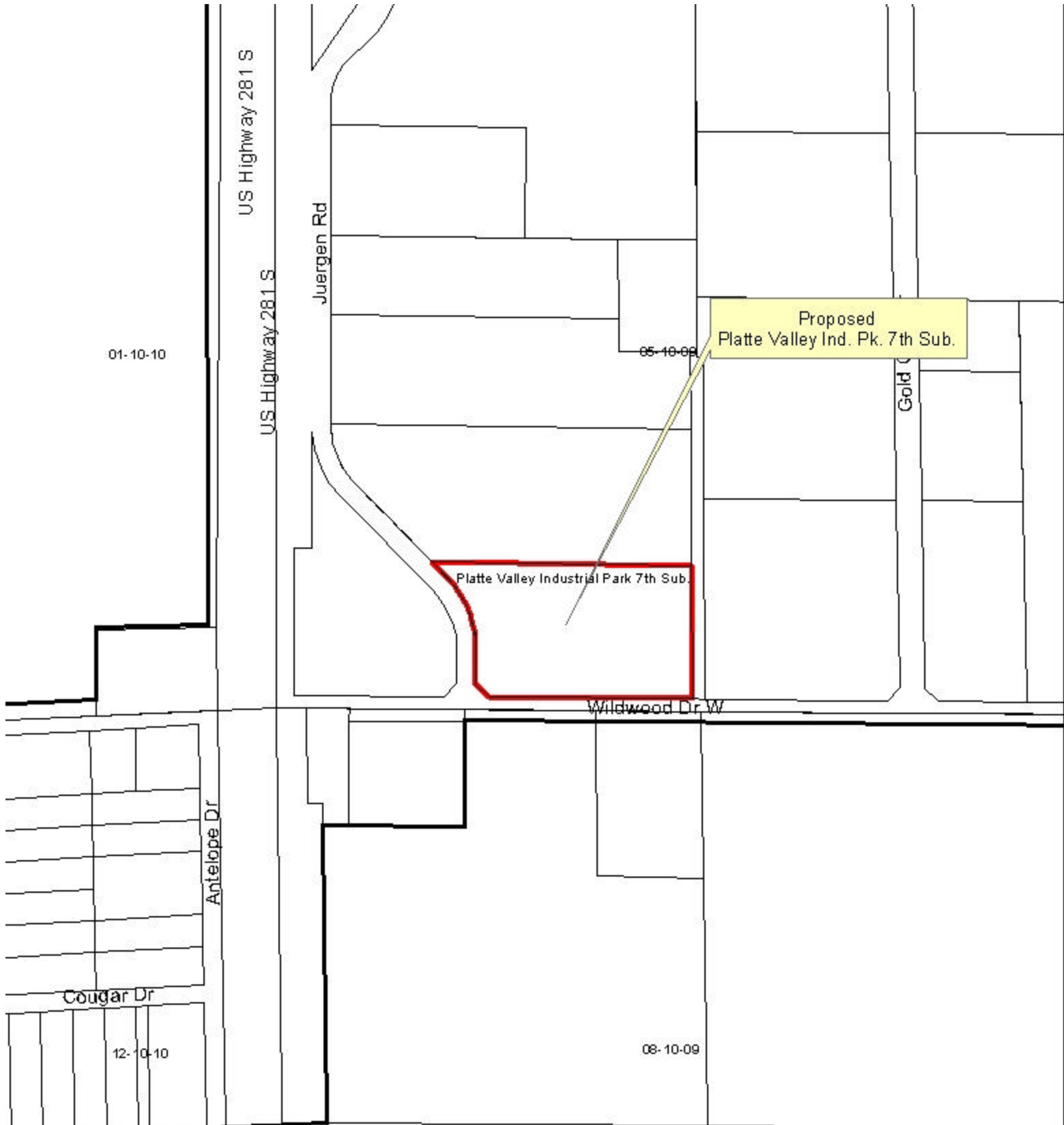
1. Move to approve
2. Refer the issue to a Committee
3. Postpone the issue to future date
4. Take no action on the issue

Recommendation

City Administration recommends that the Council approve the final plat as presented.

Sample Motion

Move to approve as recommended.



LOCATION MAP



Platte Valley Industrial Park 7

Developer/Owner

BM & M, L.L.C.

1001 S 7th St.

Kansas City KS 66105

To create 2 lots north of Wildwood Drive and east of Juergen Road in the City of Grand Island, in Hall County, Nebraska.

Size: 6.873

Zoning: ME – Industrial Estates Zone

Road Access: City Roads

Water Public: City water is available

Sewer Public: City sewer is available



RESOLUTION 2011-131

WHEREAS, BM & M, L.L.C., a Limited Liability Company, being the said owner of the land described hereon, has caused same to be surveyed, subdivided, platted and designated as PLATTE VALLEY INDUSTRIAL PARK SEVENTH SUBDIVISION, to be laid out into 2 lots, a tract of land comprising all of Lot Eleven (11), Platte Valley Industrial Park Third Subdivision, in the City of Grand Island, Nebraska West of the 6th P.M., in the City of Grand Island, Hall County Nebraska, and has caused a plat thereof to be acknowledged by it; and

WHEREAS, a copy of the plat of such subdivision has been presented to the Boards of Education of the various school districts in Grand Island, Hall County, Nebraska, as required by Section 19-923, R.R.S. 1943; and

WHEREAS, a form of subdivision agreement has been agreed to between the owner of the property and the City of Grand Island.

NOW, THEREFORE, BE IT RESOLVED BY THE MAYOR AND COUNCIL OF THE CITY OF GRAND ISLAND, NEBRASKA, that the form of subdivision agreement hereinbefore described is hereby approved, and the Mayor is hereby authorized to execute such agreement on behalf of the City of Grand Island.

BE IT FURTHER RESOLVED that the final plat of PLATTE VALLEY INDUSTRIAL PARK SEVENTH SUBDIVISION, as made out, acknowledged, and certified, is hereby approved by the City Council of the City of Grand Island, Nebraska, and the Mayor is hereby authorized to execute the approval and acceptance of such plat by the City of Grand Island, Nebraska.

- - -

Adopted by the City Council of the City of Grand Island, Nebraska, June 14, 2011.

Jay Vavricek, Mayor

Attest:

RaNae Edwards, City Clerk

Approved as to Form ☐ _____
June 9, 2011 ☐ City Attorney