



# City of Grand Island

Tuesday, June 14, 2011

Council Session

## Item E6

**Public Hearing Concerning Acquisition of Utility Easements - 1839  
and 1919 East 4th Street - Ummel**

Staff Contact: Tim Luchsinger

# **Council Agenda Memo**

**From:** Robert H. Smith, Asst. Utilities Director

**Meeting:** June 14, 2011

**Subject:** Acquisition of Utility Easements– 1839 & 1919 East 4<sup>th</sup> Street – Tommy Ummel Sr., and Tommy Ummel, Jr.

**Item #'s:** E-6 & G-9

**Presenter(s):** Timothy Luchsinger, Utilities Director

## **Background**

Nebraska State Law requires that acquisition of property must be approved by City Council. The Utilities Department needs to acquire an easement relative to the property of Tommy Ummel, Sr. and Tommy Ummel, Jr. located at 1839 and 1919 East 4<sup>th</sup> Street, in the City of Grand Island, Hall County, in order to have access to install, upgrade, maintain, and repair power appurtenances, including lines and transformers.

## **Discussion**

The Ummel's are relocating their recycling business to a new building constructed at 1919 East 4<sup>th</sup> Street, and a new building at 1839 East 4<sup>th</sup> Street. These easements will be used to locate primary electrical conduit, cable, and a pad-mounted transformer to provide electrical power to the new buildings.

## **Alternatives**

It appears that the Council has the following alternatives concerning the issue at hand. The Council may:

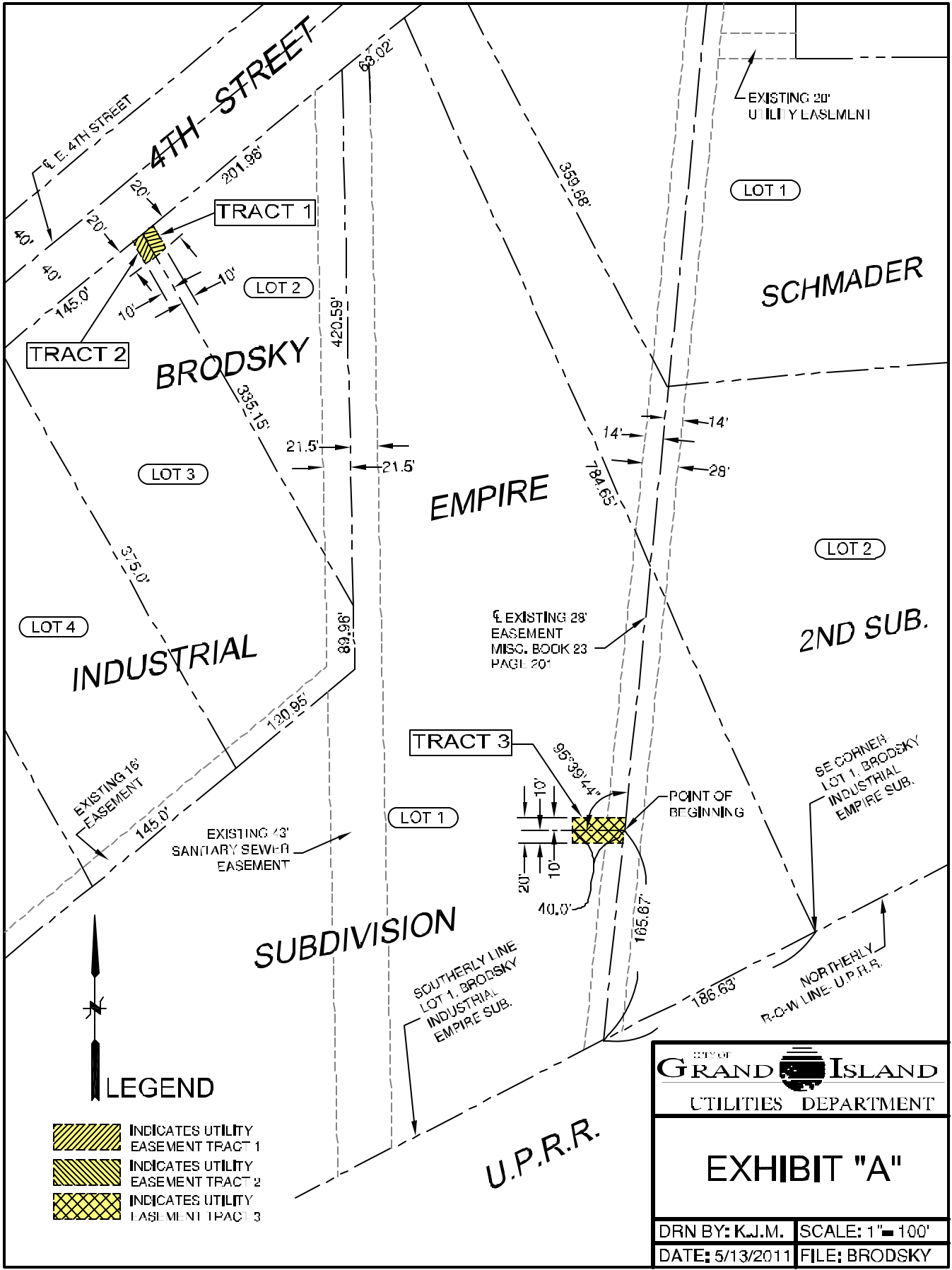
1. Make a motion to approve
2. Refer the issue to a Committee
3. Postpone the issue to future date
4. Take no action on the issue

## **Recommendation**

City Administration recommends that the Council approve the resolution for the acquisition of the easement for one dollar (\$1.00).

## **Sample Motion**

Move to approve acquisition of the Utility Easement.



TRACT 1  
TRACT 2

BRODSKY  
LOT 2  
LOT 3  
LOT 4

INDUSTRIAL

EMPIRE

SCHMADER

2ND SUB.

SUBDIVISION

U.P.R.R.

EXISTING 20' UTILITY EASEMENT

EXISTING 28' EASEMENT MISC. BOOK 23 PAGE 20'

EXISTING 16' EASEMENT

EXISTING 1/3' SANITARY SEWER EASEMENT

TRACT 3

LOT 1

POINT OF BEGINNING

SE CORNER LOT 1, BRODSKY INDUSTRIAL EMPIRE SUB.



LEGEND

- INDICATES UTILITY EASEMENT TRACT 1
- INDICATES UTILITY EASEMENT TRACT 2
- INDICATES UTILITY EASEMENT TRACT 3

CITY OF GRAND ISLAND UTILITIES DEPARTMENT

EXHIBIT "A"

DRN BY: K.J.M.	SCALE: 1" = 100'
DATE: 5/13/2011	FILE: BRODSKY