



City of Grand Island

Tuesday, May 24, 2011

Council Session

Item G10

#2011-127 - Approving Designating No Parking on Portions of Elm Street, Sycamore Street, Eddy Street and Wheeler Avenue

Staff Contact: John Collins, Public Works Director

Council Agenda Memo

From: Scott Griepenstroh, Project Manager

Meeting: May 24, 2011

Subject: Approving Designating No Parking on portions of Elm Street, Sycamore Street, Eddy Street and Wheeler Avenue

Item #'s: G-10

Presenter(s): John Collins, Public Works Director

Background

Council action is required to designate No Parking on any Public street. Designation of No Parking areas is being considered for the following locations.

- Elm Street along both east and west sides from the south Union Pacific Railroad (UPRR) mainline track to 125' south. See Exhibit "A."
- Sycamore Street along the narrow roadways adjacent to the Sycamore Street/UPRR underpass from Third Street to Fourth Street. See Exhibit "B."
- Eddy Street along the narrow roadways adjacent to the Eddy Street/UPRR underpass from North Front Street to Fourth Street. See Exhibit "C."
- Wheeler Avenue, on the west side of the street, from the Veterans Affairs Medical Center Building #5 entrance at 2324 N. Wheeler to 214' south at the property line. See Exhibit "D." The No Parking designation at this location shall be from the hours of 8:00 AM to 4:30 PM.

The request for No Parking at the Elm Street location originated from the City Fire Administration. After the Elm Street/UPRR Crossing is closed, the entire width of the roadway south of the crossing will need to be free of vehicles to allow Fire Emergency equipment the ability to turn around quickly.

The proposed No Parking designation on Elm Street will not go in effect until after the Elm Street/UPRR crossing is closed.

The request for No Parking at the Sycamore Street and Eddy Street locations originated from the City Fire Administration. The roadways adjacent to the UPRR underpasses are narrow. Any parked vehicles in these streets make access for Fire Emergency equipment, to businesses adjacent to Sycamore Street from Third Street to Fourth Street, and Eddy Street from North Front to Fourth Street, difficult or impossible.

The request for No Parking at the Wheeler Avenue location originated from officials at the Veterans Affairs Medical Center. The Medical Center has received numerous complaints from patients, visitors, vendors and staff on the lack of visibility for on-coming traffic when exiting the facilities on to Wheeler Avenue. Residents in the neighborhood also expressed frustration with the lack of visibility at a December 9, 2010 Town Hall meeting.

Discussion

The Engineering Division of the Public Works Department reviewed traffic flows and safety at the proposed locations. The No Parking designations will improve safety and traffic flow. Public Works recommends the designation of No Parking at the following locations :

- Elm Street along both east and west sides from the south UPRR mainline track to 125' south.
- Sycamore Street along the narrow roadways adjacent to the Sycamore Street/UPRR underpass from Third Street to Fourth Street.
- Eddy Street along the narrow roadways adjacent to the Eddy Street/UPRR underpass from North Front Street to Fourth Street.
- Wheeler Avenue, on the west side of the street, from the Veterans Affairs Medical Center Building #5 entrance at 2324 N. Wheeler to 214' south at the property line. See Exhibit "C." This No Parking designation shall be from the hours of 8:00 AM to 4:30 PM.

Alternatives

It appears that the Council has the following alternatives concerning the issue at hand. The Council may:

1. Move to approve
2. Refer the issue to a Committee
3. Postpone the issue to future date
4. Take no action on the issue

Recommendation

City Administration recommends that the Council approve the resolution designating No Parking on portions of Elm Street, Sycamore Street, Eddy Street and Wheeler Avenue.

Sample Motion

Move to approve the resolution designating No Parking on portions of Elm Street, Sycamore Street, Eddy Street and Wheeler Avenue.

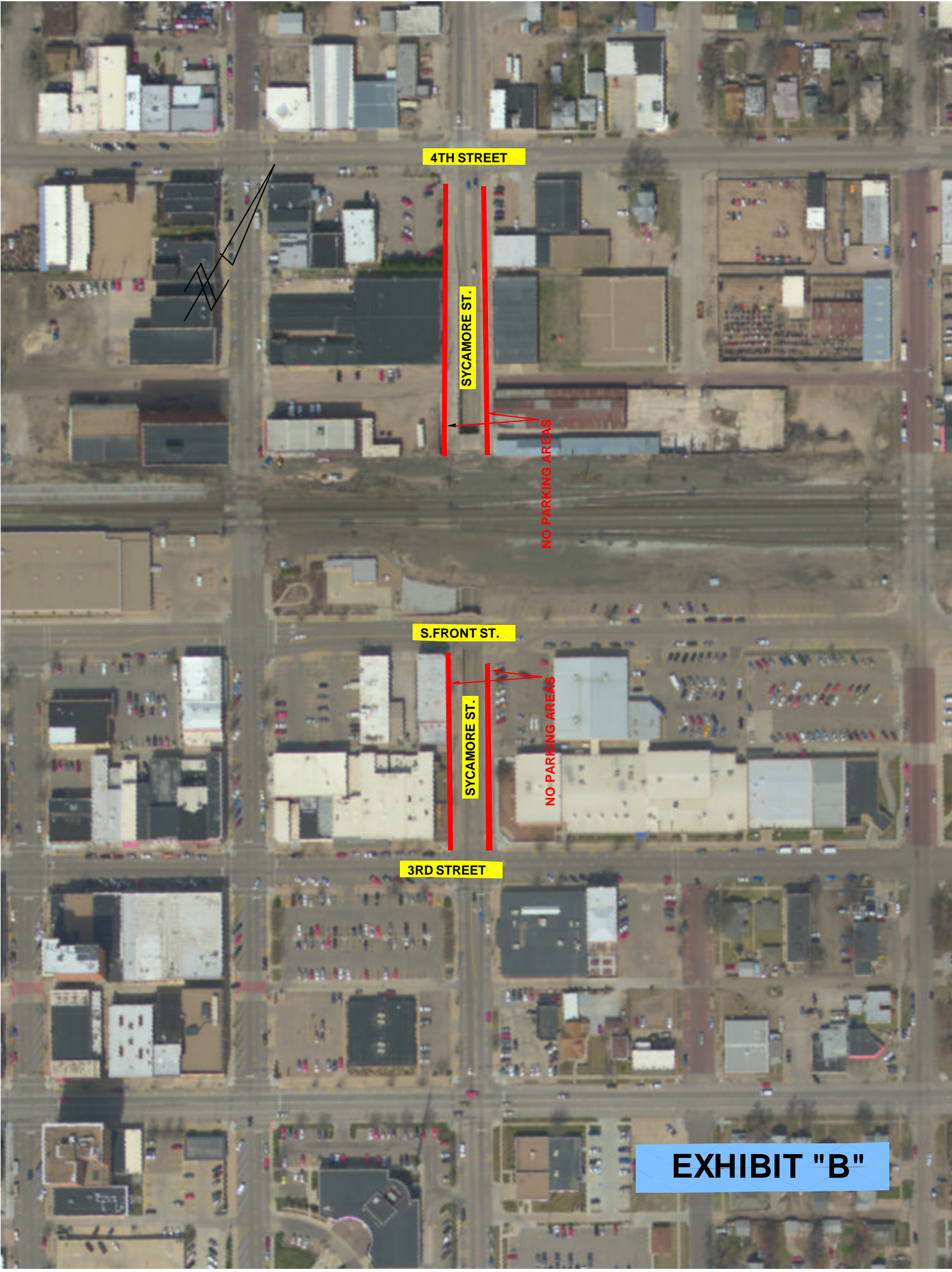
4TH STREET

ELM STREET

125' NO PARKING
BOTH SIDES

3RD STREET

EXHIBIT "A"



4TH STREET

SYCAMORE ST.

NO PARKING AREAS

S.FRONT ST.

SYCAMORE ST.

NO PARKING AREAS

3RD STREET

EXHIBIT "B"



4TH STREET

EDDY STREET

N. FRONT ST.

NO PARKING AREAS

EXHIBIT "C"



CAPITAL AVE

214' NO PARKING
8:00 A.M. TO 4:30 P.M.

23 RD STREET

WHEELER ST.

EXHIBIT "D"

No Parking Designation Review

Locations on Elm Street, Eddy Street, Sycamore Street and Wheeler Avenue

Proposed Location

Elm Street along both east and west sides from the south Union Pacific Railroad (UPRR) mainline track to 125' south

Discussion

- This location is zoned Heavy Business. The abutting properties are commercial and retail.
- The width of Elm Street is 51'.
- The existing parking on the east side of the street appears to be frequently used by an employee of the adjacent business.
- The full width of the street will be needed to allow Fire Emergency equipment to turn around after the Elm Street/UPRR crossing is closed.
- There is adequate parking available to the local businesses south of this location.

Impact

The impact for customer parking is insignificant. The local business may have to provide another parking location for its employee.

Benefit

The benefit for access for Fire Emergency access is significant.

Recommendation

Designate 24 Hour No Parking as proposed after the Elm Street/UPRR crossing is closed.

Proposed Location

Eddy Street along the narrow roadways adjacent to the Eddy Street/UPRR underpass from North Front Street to Fourth Street

Discussion

- This location is zoned Mixed Use Manufacturing and General Business. The abutting properties are commercial, retail and residential.
- The roadways are only 18.5' wide from the underpass wall curb to the back of the street curb.
- Parking on the narrow roadways occurs infrequently.
- Access is difficult due to the narrowness of the streets.
- There is off-street parking available to the local businesses. There is off-street parking available for the residence. Parking is available along North Front Street.

Impact

The impact for customer and residential parking is insignificant.

Benefit

The benefit for Fire Emergency access is significant. The benefit for traffic flow is significant.

Recommendation

Designate 24 Hour No Parking as proposed.

Proposed Location

Sycamore Street along the narrow roadways adjacent to the Sycamore Street/UPRR underpass from Third Street to Fourth Street

Discussion

- This location is zoned Mixed Use Manufacturing and Heavy Business. The abutting properties are restaurant, commercial and retail.
- The roadways are only 18' wide from the underpass wall curb to the back of the street curb.
- Parking on the narrow roadways occurs infrequently.
- Access is difficult due to the narrowness of the streets.
- There is off-street parking available to the local businesses. Parking is available along Fourth Street, South Front Street and Third Street.
- There is a tenant of an apartment near Third Street who is currently parking on the west narrow roadway.

Impact

The impact for customer parking is insignificant due to availability of nearby parking. Tenant parking will not be available on Sycamore Street.

Benefit

The benefit for Fire Emergency access is significant. The benefit for traffic flow is significant.

Recommendation

Designate 24 Hour No Parking as proposed.

Proposed Location

Wheeler Avenue, on the west side of the street, from the Veterans Affairs Medical Center Building #5 entrance at 2324 N. Wheeler to 214' south at the property line.

Discussion

- The abutting property is the VA Medical Center. Wheeler Avenue is in a primarily residential neighborhood.
- Parking by employees of the VA Medical Center at this location occurs frequently during the hours of 8:00 AM to 4:30 PM. This causes significant sight obstruction at the driveway to the VA Medical Center.
- Parking for six vehicles will be removed with the proposed no parking designation.
- Adequate parking is available along Wheeler Avenue and West 23rd Street.

Impact

The impact for employee, patient and residential parking is not significant due to availability of nearby parking.

Benefit

The benefit for improved sight clearance for motorists exiting the VA Medical Center is significant. This designation will also benefit traffic flow.

Recommendation

Designate No Parking as proposed during the hours of 8:00 AM to 4:30 PM.

Review completed by Scott Griepenstroh on April 4, 2011

RESOLUTION 2011-127

WHEREAS, the City Council, by authority of §22-77 of the Grand Island City Code, may by resolution, entirely prohibit or fix a time limit for the parking and stopping of vehicles in or on any public street, public property, or portion thereof; and

WHEREAS, the Public Works Department is requesting that No Parking be allowed along the following city streets:

- On Elm Street, from the south Union Pacific Railroad mainline track to 125' south, to go in effect after the Elm Street/Union Pacific Railroad crossing is closed;
- On Sycamore Street along the narrow roadways adjacent to the Sycamore Street Union Pacific Railroad underpass from Third Street to Fourth Street;
- On Eddy Street along the narrow roadways adjacent to the Eddy Street/Union Pacific Railroad underpass from North Front Street to Fourth Street;
- On the west side of Wheeler Avenue, from the Veterans Affairs Medical Center Building #5 entrance at 2324 N. Wheeler Avenue to 214' south at the Medical Center property line, from the hours of 8:00 AM to 4:30 PM;

WHEREAS, it is recommended that such restricted parking request be approved.

NOW, THEREFORE, BE IT RESOLVED BY THE MAYOR AND COUNCIL OF THE CITY OF GRAND ISLAND, NEBRASKA, that:

1. A No Parking Zone is hereby designated along the following sections:
 - On Elm Street, from the south Union Pacific Railroad mainline track to 125' south to go in effect after the Elm Street/Union Pacific Railroad crossing is closed;
 - On Sycamore Street along the narrow roadways adjacent to the Sycamore Street/Union Pacific Railroad underpass from Third Street to Fourth Street;
 - On Eddy Street along the narrow roadways adjacent to the Eddy Street/Union Pacific Railroad underpass from North Front Street to Fourth Street;
 - On the west side of Wheeler Avenue, from the Veterans Affairs Medical Center Building #5 entrance at 2324 N. Wheeler Avenue to 214' south at the Medical Center property line, from the hours of 8:00 AM to 4:30 PM;
2. The City's Street Division of the Public Works Department shall erect and maintain the signs necessary to effect the above regulation.

- - -

Adopted by the City Council of the City of Grand Island, Nebraska, May 24, 2011.

Jay Vavricek, Mayor

Attest:

RaNae Edwards, City Clerk